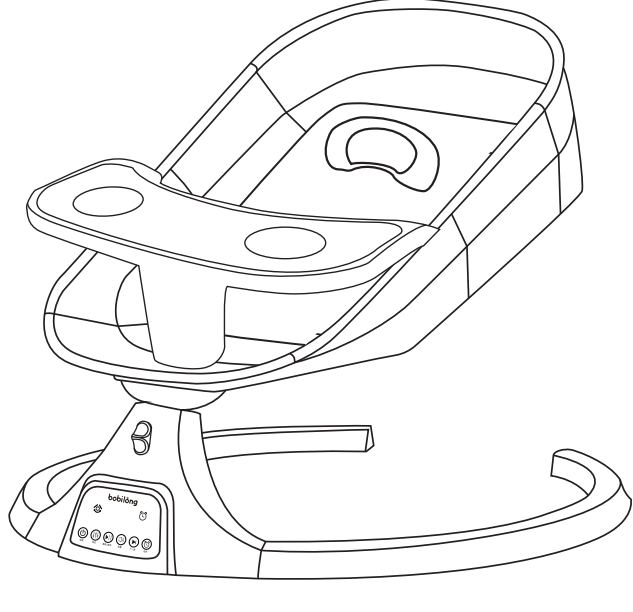


Electric baby rocking chair

180 ° lie flat to protect the baby's spine



Applicable age  
0-24 M

Counterfeiting of patented ratchet folding products must be investigated  
Please read the instructions carefully before using the product



Rocking chair installation video



Plate installation video

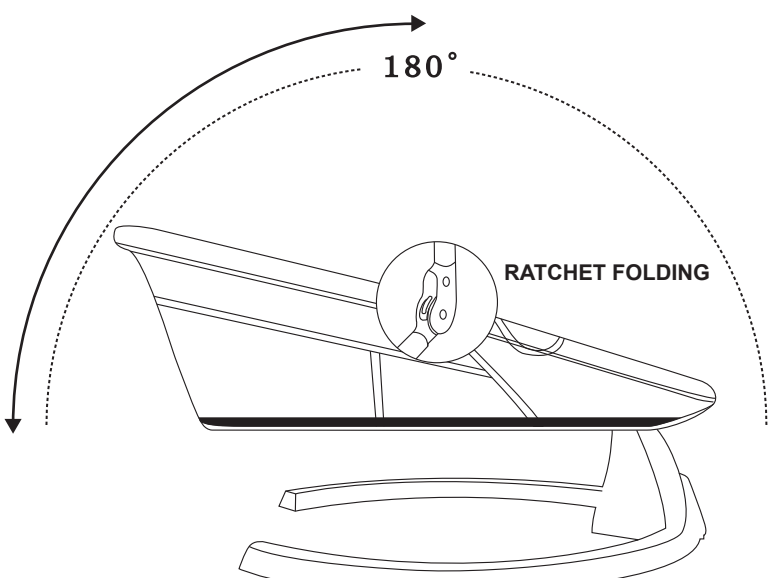
PRODUCT CATALOG

COMFORTABLE RIDGE PROTECTION	2
INVENTORY	3
INSTALLATION INSTRUCTIONS	4
SAFETY BELT INSTALLATION	5
SEAT BELT ADJUSTMENT	5
HIGH AND LOW BUCKLE ADJUSTMENT	5
KEY DESCRIPTION	6
REMOTE CONTROL	7
WARNING	8
AFTER SALES GUARANTEE CARD	9
CLEANING AND MAINTENANCE	10
COMMON PROBLEM	10

COMFORTABLE RIDGE PROTECTION

FOUR GEAR MULTI ANGLE ADJUSTMENT

180 ° LIE FLAT RIDGE GUARD

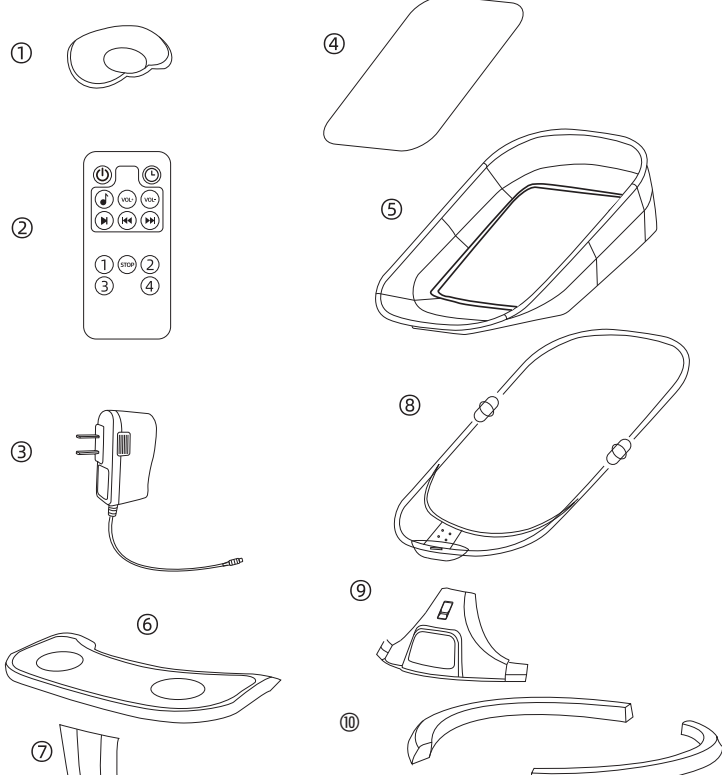


PRODUCT INFORMATION

INVENTORY

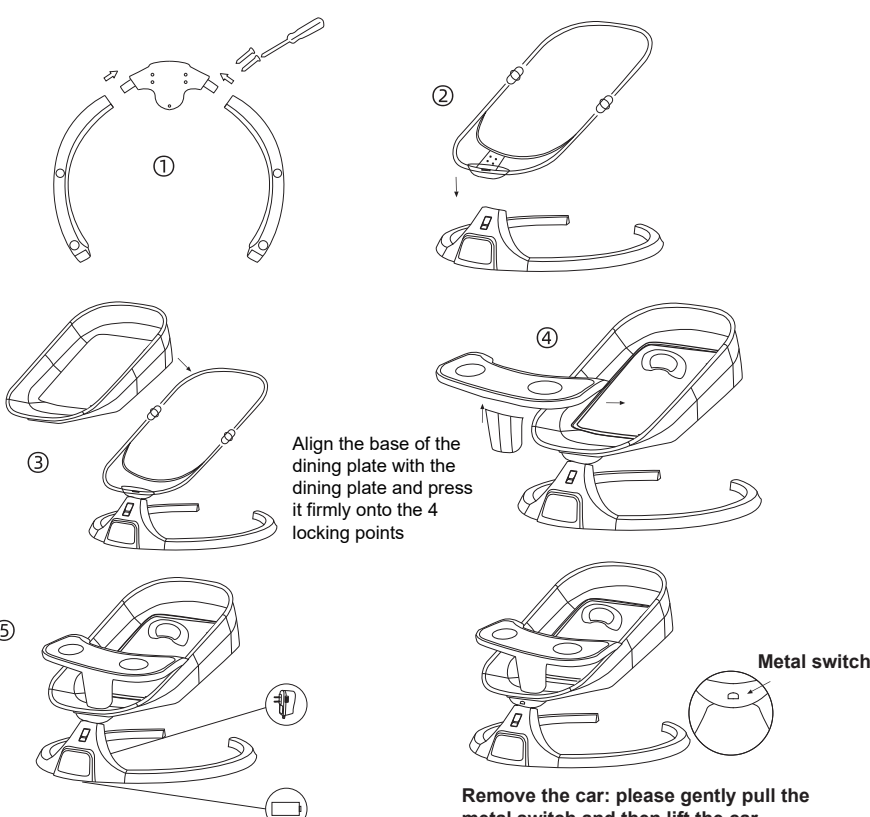
- ① PILLOW X1, ② REMOTE CONTROLLER X1, ③ CHARGER X1, ④ SEAT CLOTH X1, ⑤ PLATE X1, ⑥ PLATE BASE X1, ⑦ SUPPORT X1, ⑧ BASE X1, ⑨ REINFORCED IRON PLATE X1

Note: please check whether the components are complete before use.



INSTALLATION INSTRUCTIONS

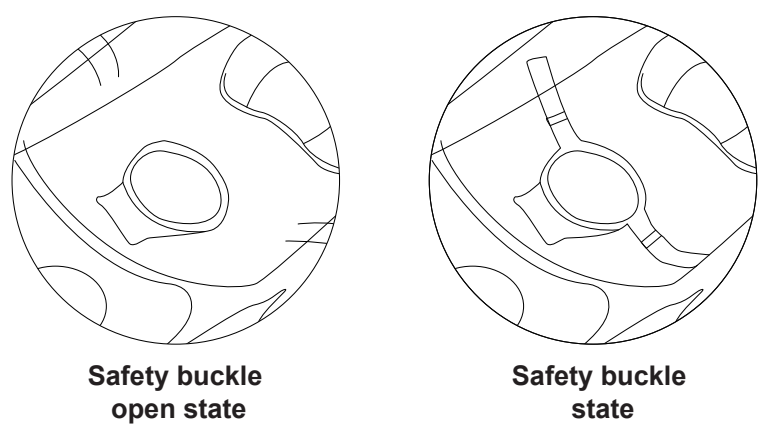
1. Install the two pipes into the base host. The pipes shall be installed in place and the direction shall be matched to ensure that the locking patch can buckle the car.
2. Install the bed frame onto the host shaft to fix the bed frame and the host firmly.
3. put the seat cloth on the bed frame.
4. Fix the plate and the plate base with screws, and then insert the plate into the joint.
5. Complete product installation; Plug in the power supply and use it.



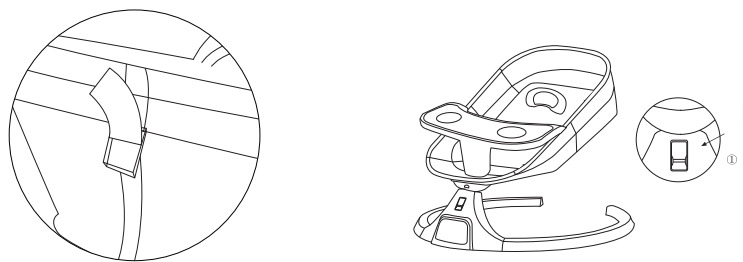
Metal switch  
Remove the car: please gently pull the metal switch and then lift the car.

INSTALLATION INSTRUCTIONS

Use the safety buckle on the seat and adjust the required length as shown in the following figure.



Adjustment description



There is an adjusting buckle behind the cloth cover, and the tightness of the belt can control the inclination of the seat plate

After the rocking chair stops rocking, pull up the latch locking device to lock the rocking chair.

KEY DESCRIPTION

PRODUCT INFORMATION



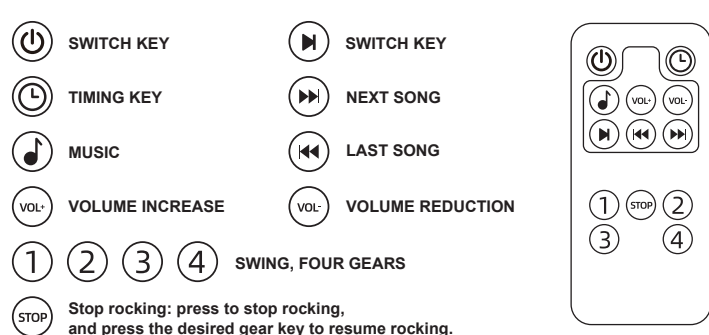
- POWER BUTTON** After power on, the indicator light is on, the power is on, press once, the indicator light is off, and the power is off
- ADJUSTMENT KEY** There are 4 swing options for gears, increasing from gear 0.
- PLAY PAUSE KEY** Click play built-in music, and then click Close music.
- VOLUME KEY** Adjust the volume.
- NEXT KEY** Click to play the next music.
- TIMING KEY:** Fourth gear timing function (8 / 15 / 30 / 45 minutes), press once to switch for one time.

**BLUETOOTH** Open the Bluetooth link of the mobile phone. After the link is successful, the mobile phone music can be played. The limited playing level is: Bluetooth > built-in music

SWING LOCK KEY

- Swing lock:  
1. When the power supply is not connected to swing, the rocking chair cannot swing when it is moved upward (a slight swing is normal).  
2. When the power supply is not connected to swing, it can be moved downward to restore random swing (Note: do not touch this button when the power supply is connected to swing automatically)

REMOTE CONTROL



POWER SUPPLY MODE

- 1.The DC plug can be plugged into 100-240V ~ 50 / 60Hz AC power supply.
2. The DC interface can be connected to the charging bank for power supply (the output of the charging bank is 6V / 1A).
- 3.and the output parameter voltage of the adapter is 6V and the current is 1a.

MATTERS NEEDING ATTENTION

It is forbidden to use the adapter not provided by this product to supply power to the product. When using the adapter, keep the adapter and data cable away from children and prohibit children from playing. The adapter used in the rocking chair shall be regularly inspected for data cable socket, accessories and other parts. If there is any damage, it shall be stopped.

WARNING

1. Please wear the safety belt correctly when using this product!
2. Please use this product under the supervision of your guardian!
3. Suitable age: 0-24 months.
4. The baby using this product weighs no more than 15kg!
- 5 do not use the plate to lift or move the rocking chair!
6. When the baby is using this product, do not lift or move this product!
7. Except for supporting toys, it is strictly prohibited to put anything on the dinner plate!
8. It is strictly prohibited to use this product at a high place (such as table top, table, stairs or other places higher from the ground)Prevent falling hazard!
9. It is very dangerous to put this product on a non flat surface!
10. Pay attention to the danger of suffocation: please do not use it on soft objects to prevent suffocation caused by overturning (such as bed, sofa, etc.)
11. Please do not use it for babies who can stand up independently. In order to prevent accidental life danger caused by falling or being entangled by safety belt.
12. Don't let children use this product as a toy!
13. Make sure that children leave the product before opening or folding it!
- 14 this product cannot be used for long-term sleep.When this product is connected to a music player, ensure that the volume of the player is set to the bass position!
16. Do not use this product if any parts are damaged or missing. Unless a replacement is approved by the manufacturerParts, do not use substitutes at will!
17. Keep away from fire!18. When using, please ensure to use the security system configuration.

This device complies with Part 15 of the FCC Rules. Operation is subject to the following two conditions: (1) this device may not cause harmful interference, and (2) this device must accept any interference received, including interference that may cause undesired operation

NOTE: This equipment has been tested and found to comply with the limits for a Class B digital device, pursuant to Part 15 of the FCC Rules. These limits are designed to provide reasonable protection against harmful interference in a residential installation. This equipment generates, uses and can radiate radio frequency energy and, if not installed and used in accordance with the instructions, may cause harmful interference to radio communications. However, there is no guarantee that interference will not occur in a particular installation.  
If this equipment does cause harmful interference to radio or television reception, which can be determined by turning the equipment off and on, the user is encouraged to try to correct the interference by one or more of the following measures:  
-- Reorient or relocate the receiving antenna.  
-- Increase the separation between the equipment and receiver  
-- Connect the equipment into an outlet on a circuit different from that to which the receiver is connected.  
-- Consult the dealer or an experienced radio/TV technician for help.

Warning: changes or modifications not expressly approved by the party responsible for compliance could void the user's authority to operate the equipment

The devices has been evaluated to meet general RF exposure requirement, the device can be used in portable exposure condition without restriction

CLEANING AND MAINTENANCE

DAILY CLEANING

1. Wipe the rocking chair base with a wet cloth and mild detergent, and dry it thoroughly after wiping. Do not use corrosive cleaners.
2. The cloth can be disassembled and washed, specifically:  
-Seat cloth: remove the seat cloth. If it is dirty, scrub it with a wet cloth and mild detergent and dry it.  
-Roof group: pull out the buckle, remove it, add a small amount of detergent, gently wash it by hand, and then rinse it with clean water.  
Hang it in a ventilated place to dry and avoid exposure to the sun.  
-Pillow: tear off the Velcro, take down the pillow, put in a little detergent, wash gently with your hands, and then rinse with clean water.  
Clean, hang in a ventilated place and dry to avoid exposure.

MAINTENANCE

1. Please maintain this product regularly. Confirm the tightness of the connecting parts of the rocking chair and support (such as rivets, screws, etc.)Degree and safety. Please stop using if there is any abnormality.
2. This product contains electronic components. It shall not be used in water or in humid environment. Please ensure that the product is dry and stored in a cool and dry place, avoid direct sunshine for a long time.

COMMON FAULT JUDGMENT AND TREATMENT

In use, in order to save your time, it is recommended to refer to the reason for self inspection before sending for inspection

Order	Possible problems	Solution
1	The rocking chair is energized	1 check whether the adapter and DC cable are firmly connected. If it is loose, please connect it firmly. 2. The DC line may be damaged. Contact customer service to replace the DC line
2	The swing amplitude is very small	Check whether the latch switch is locked. If it is locked, open it downward.
3	Excessive swing amplitude / impact	Power off the rocking chair, put the baby in the middle position and power on again

Note: the above are common fault analysis and troubleshooting methods. For other faults or faults you can't solve, please contact the customer service department of the company or directly go to the maintenance point designated by the company for maintenance. Do not disassemble and repair yourself.

Thank you for purchasing our products. For your rights and interests, please keep the after-sales service card properly. If you have any product quality problems, please contact the dealer.

NAME	TEL
PRODUCT NAME	MODEL
PURCHASE DATE	
ADDRESS	

MATTERS NEEDING ATTENTION

- From the date of purchase, normal users can enjoy one year of free maintenance service for circuit board components and one year for the whole machineOne year free maintenance service, and the plastic shell of the product is not within the warranty scope;
- Other consumables and accessories are not covered by the warranty;
- Please show the after-sales service card and purchase certificate or invoice before maintenance.

NON WARRANTY SCOPE

- Careless or wrong use and man-made damage;
- The after-sales service card is lost or damaged;
- Damage caused by force majeure such as natural disasters;

Thank you for using our products. We are committed to serving consumers with better products, more thoughtful services and more favorable prices. The company has more products for you to choose from.