

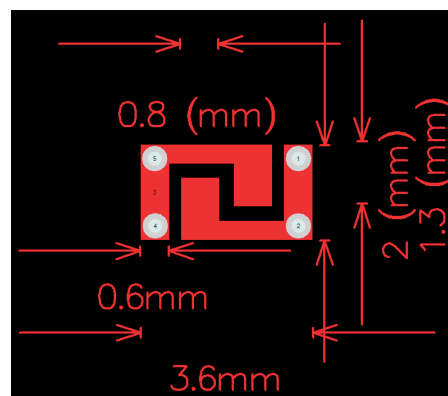
Product specification

Quick Reference Date

| Antenna module on the system board | |
|------------------------------------|----------------------------------|
| Frequenc Range | 2400 ~ 2500MHz |
| Ant.Port Inpu1Pwr. (dBm) | 0 (Typ. BT class 2 output power) |
| Tot.Rad. Pwr. (dBm) | -1.2 (Input pwr loss pwr) |
| Peak EIRP (dBm) | 1.2 |
| Directivity (dBi) | 1 (all direction antenna) |
| Efficiency (dB) | 6 0.2 % |
| Gain (dBi) | 1.68 |
| MaximumPower (dBm) | 1.7 Q(Y-plane) |
| MinimumPower (dBm) | -4{X Y-pane) |
| Avg Power (dBm) | -0.5(XY-pane) |
| Input Impence(ohm) | 50 |
| PolarizationType | V ertiral & Horizontal |
| V .S .W .R | < 1.4 |

All the technical data and information contained here in are subject to change without prior notice

Antennal Layout& module on the system board

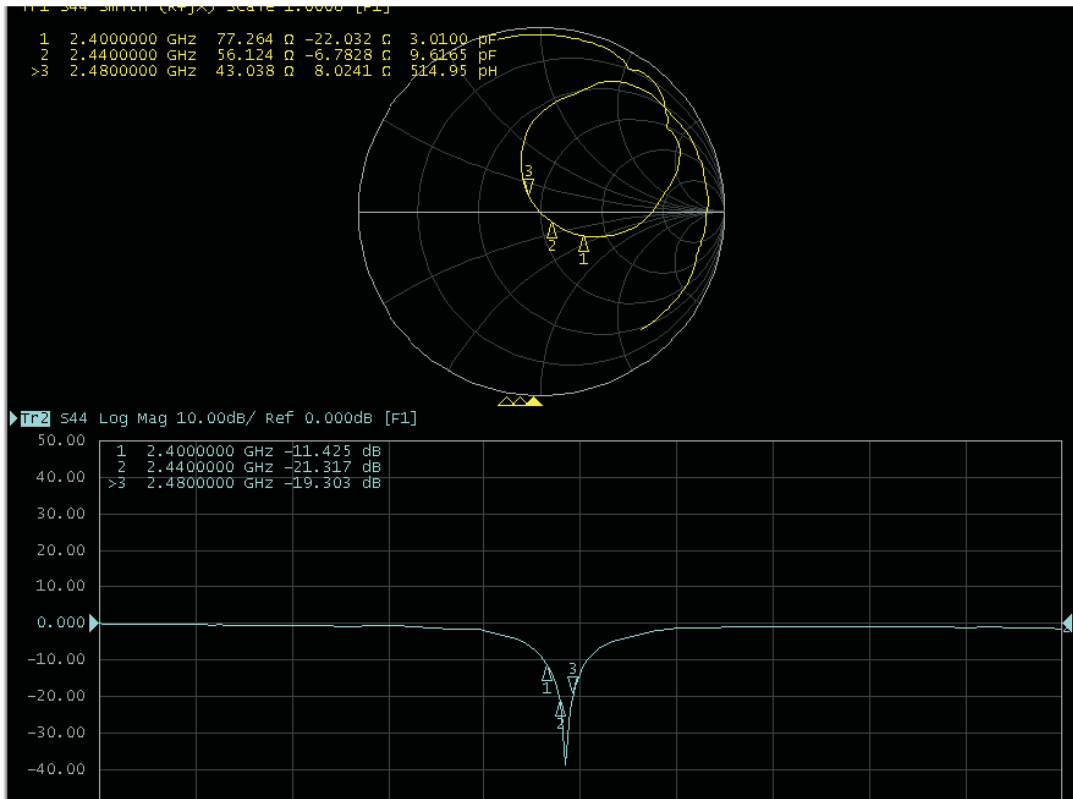


Antenna Gain

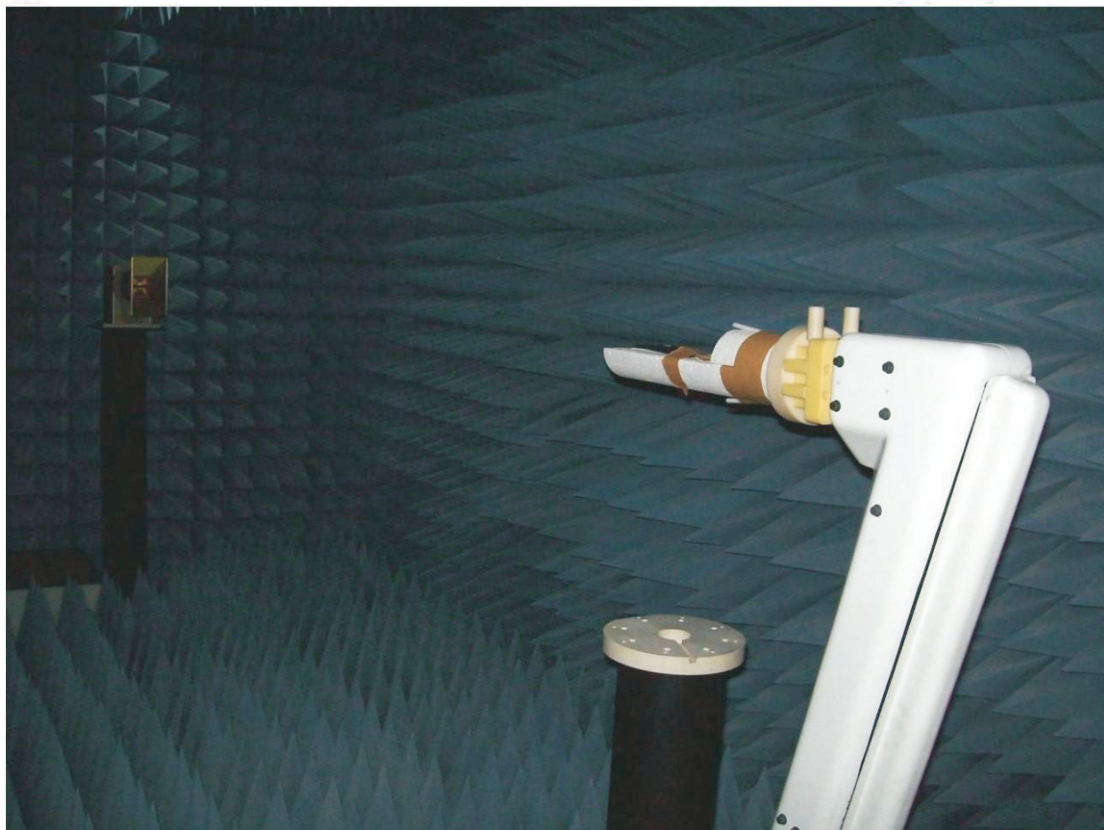
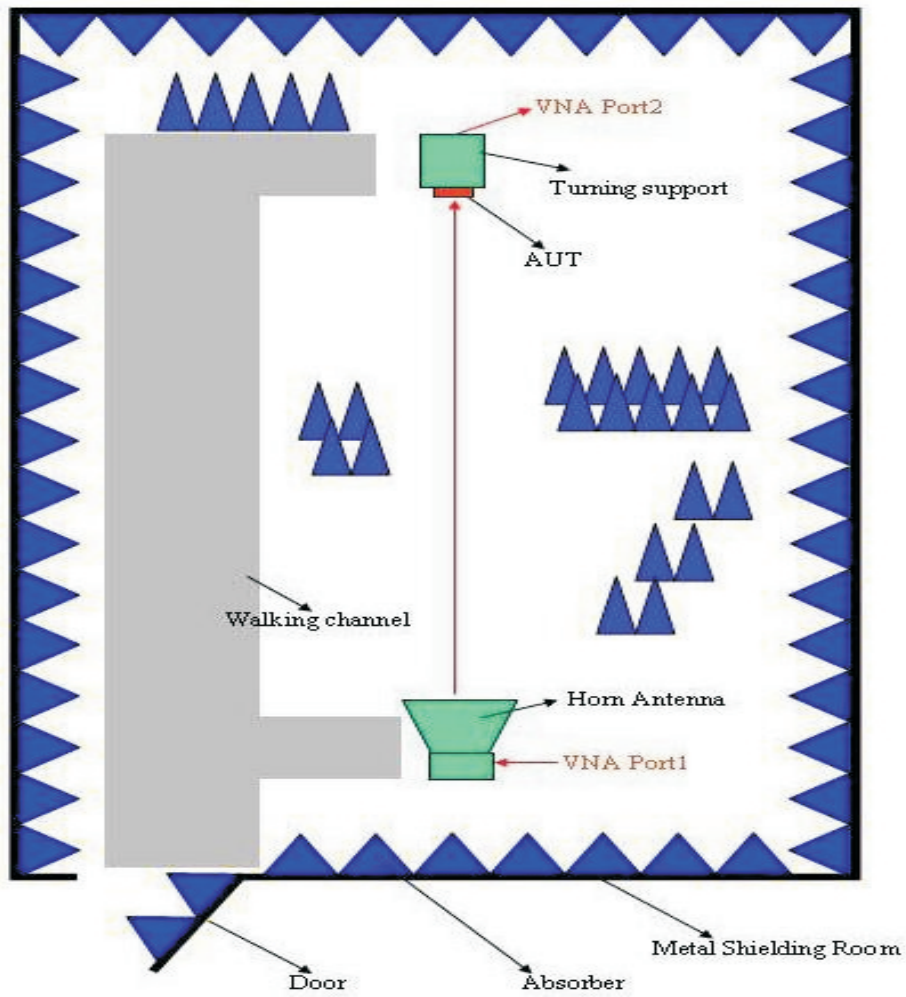
Gain Table

| UnitindBi @2.44GHz | XY-pane | | XZ-pane | | YZ-plane | | Efficiency |
|--------------------|---------|-------|---------|-------|----------|-------|------------|
| | Peak | Avg. | Peak | Avg. | Peak | Avg. | |
| Modlhe Boa-d | 1.35 | -0.48 | 1.68 | -3.83 | 1.11 | -2.99 | 6 0.2% |

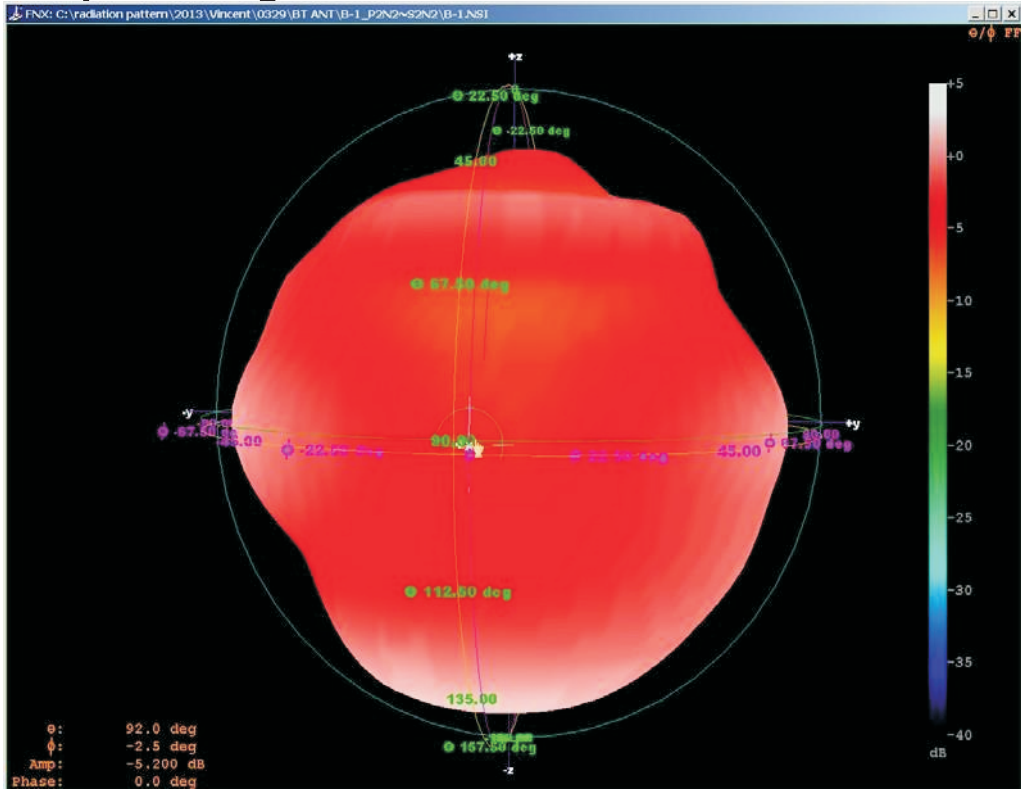
ReturnLoss



The Environment of Antenna Radiation Pattern

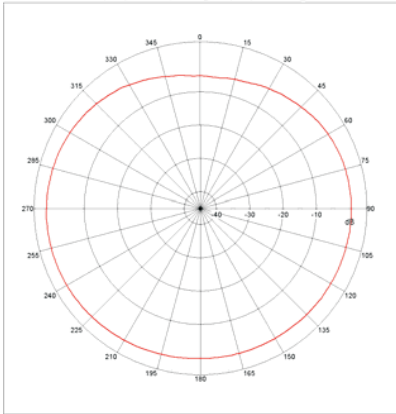


3D radiation pattern diagram



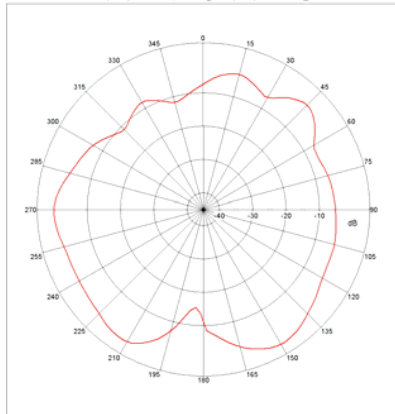
XY-plane

Far-field Power Distribution(H+V) on X-Y Plane
 Plot Peak Gain(H+V)= 1.35 dB, Plot AvgGain(H+V)= -0.48dB @2.44000 GHz



XZ-plane

Far-field Power Distribution(H+V) on X-Z Plane
 Plot Peak Gain(H+V)= 1.68 dB, Plot AvgGain(H+V)= -3.83dB @2.44000 GHz



YZ-plane

Far-field Power Distribution(H+V) on Y-Z Plane
 Plot Peak Gain(H+V)= 1.11 dB, Plot AvgGain(H+V)= -2.99dB @2.44000 GHz

