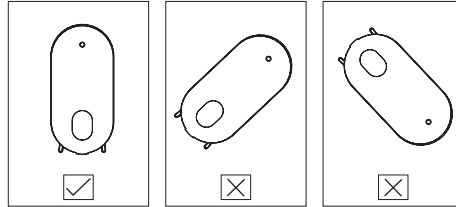


## ⚠ Precautions

1. After installation, please keep the machine vertical, tilted or turned. Turning the machine will cause oil leakage and damage the machine.

2. If you are not a technician, you are not allowed to modify or disassemble. Unload or repair the machine, if the machine fails, please promptly contact our related technicians.



## Cleaning Machine

The machine needs to be cleaned when

1. Prepare to use different essential oil
2. the amount of atomization is getting weaker

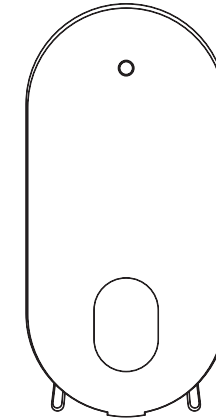
Cleaning steps

1. Open the machine door and remove the essential oil bottle
2. Pour an appropriate amount of industrial alcohol into the essential oil bottle and install it on the device. Connect the power and turn on the device for 5-10 minutes, to prevent different scents from mixing together.
3. After drying, finish cleaning

## Troubleshooting

Problem failure	Solution
No fog	<ol style="list-style-type: none"> <li>1. Check if the power is on</li> <li>2. Check whether the machine is in the status of "out of service"</li> <li>3. Check if the air pump works and whether the capacitor voltage is less than DC12V</li> <li>4. Check if the outlet pipe seal is damaged or falling off</li> </ol>
Atomization is small	<ol style="list-style-type: none"> <li>1. Check whether the atomizing outlet pipe seal is damaged</li> <li>2. Check whether the atomizing core cover inside the atomizing head is loose.</li> <li>3. Check if the atomizing nozzle is damaged</li> </ol>
Oil leak	<ol style="list-style-type: none"> <li>3. Check if the atomizing nozzle is damaged</li> <li>2. Whether the atomizing head cover is not sealed</li> </ol>
Abnormal noise	<ol style="list-style-type: none"> <li>1. Check if the air pump is loose</li> <li>2. The air pump is damaged, replace it with a new one</li> </ol>

# PRODUCT MANUAL



## Working Time Display

Mist Volume Level					
Level	Working Time	Pause Time	Level	Working Time	Pause Time
1	5s	300s	11	65s	60s
2	15s	250s	12	70s	55s
3	25s	200s	13	80s	50s
4	30s	150s	14	90s	45s
5	35s	120s	15	100s	40s
6	40s	100s	16	120s	35s
7	45s	90s	17	150s	30s
8	50s	80s	18	200s	25s
9	55s	70s	19	250s	15s
10	60s	65s	20	300s	5s

## Parameter

Product name: JC300

Coverage up to 300m<sup>3</sup>

Voltage: DC12V

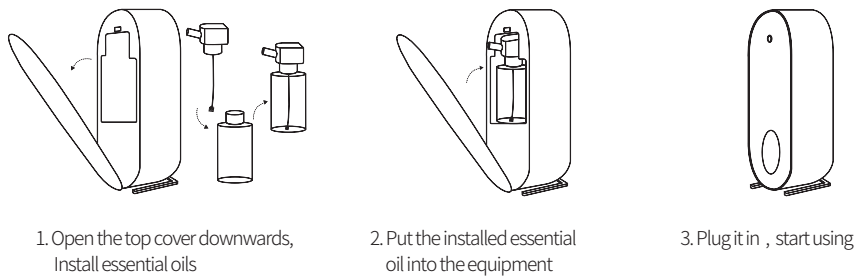
Total power:4W

Essential oil capacity: 200ML

Product Size: L110\*W75\*H225MM



## Essential Oil Installation Steps



## Instructions

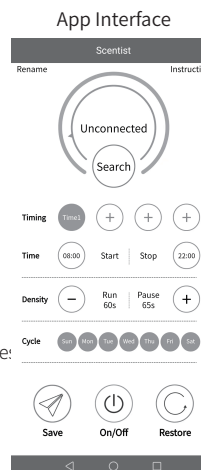
Download the APP, named "**Scientist**" in Google Play(Android)/App Store( IOS). Open the APP and click **Search** to connect to the device(NOTE: turn on the Bluetooth and GPS in your phone before click!)

1. Turn on the device, the blue light is on when Bluetooth is connected. If you have finished set a automatic working time, the device will mist (flash blue light), pause (flash red light) repeatedly. When the red light is always on, that is means over the setting working time.

2. The buzzer will sound once when power or Bluetooth is successfully connected

3. After the device setting is completed, click **SAVE** in your cell phone APP, and the buzzer will sound 2 time: continuously.

4. When you short press the ON/OFF button on the device, beep once means device starts working; beep twice means device pauses.



## Default Working Timing Set

### ★ Timing Setting

There are 4 timing setting programs. You need to set them one by one, after completed setting each one, **SAVE** first and then proceed for the next program setting. If you do not set anything, the machine will run at the defaulted procedure Time 1, which is start working time at 08:00 local time, and stop working time at 22:00 local time. \*After connected with your cell phone, the device will work with the time your cell phone shows, hence it works in your local time.

### ★ Mist Volume (Fragrance Density Level)

There are 20 levels of the mist volume (Fragrance density). When machine is running at the default mist volume level, there is a 65S pause after 60S working.

### ★ Working(Cycle)

Default cycle is from Monday to Sunday. The machine will run every day.

### ★ Save

When you finish all the setting, do click the **Save** button to make sure the device received all the information, and will work as per your setting.

### ★ On/Off Switch

Click the On/Off, the machine will stop working; click it again, it will work as per your setting.

### ★ restore

Click the **Restore** button, machine will be restored to the original status.

## Function Explanation Remarks

The fragrance density and working cycle could be adjusted/reset when the machine is in the status of timing 1.

## **FCC Statement**

This device complies with part 15 of the FCC rules. Operation is subject to the following two conditions: (1) this device may not cause harmful interference, and (2) this device must accept any interference received, including interference that may cause undesired operation.

Changes or modifications not expressly approved by the party responsible for compliance could void the user's authority to operate the equipment.

NOTE: This equipment has been tested and found to comply with the limits for a Class B digital device, pursuant to part 15 of the FCC Rules. These limits are designed to provide reasonable protection against harmful interference in a residential installation. This equipment generates uses and can radiate radio frequency energy and, if not installed and used in accordance with the instructions, may cause harmful interference to radio communications. However, there is no guarantee that interference will not occur in a particular installation. If this equipment does cause harmful interference to radio or television reception, which can be determined by turning the equipment off and on, the user is encouraged to try to correct the interference by one or more of the following measures:

- Reorient or relocate the receiving antenna.
- Increase the separation between the equipment and receiver.
- Connect the equipment into an outlet on a circuit different from that to which the receiver is connected.
- Consult the dealer or an experienced radio/TV technician for help.

The device has been evaluated to meet general RF exposure requirement. The device can be used in portable exposure condition without restriction.