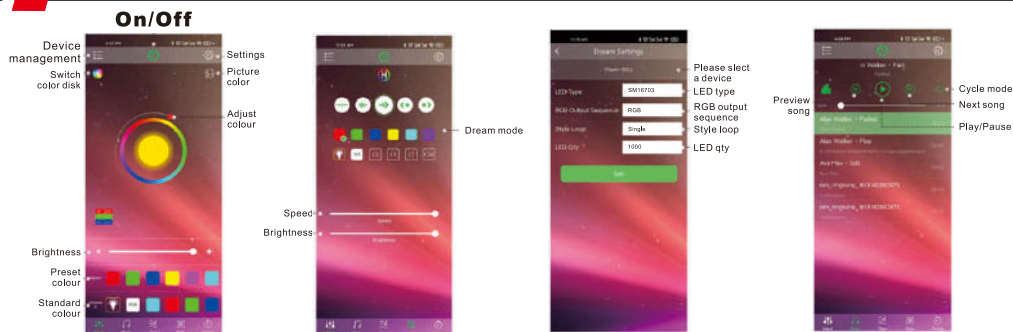


210.02 mm

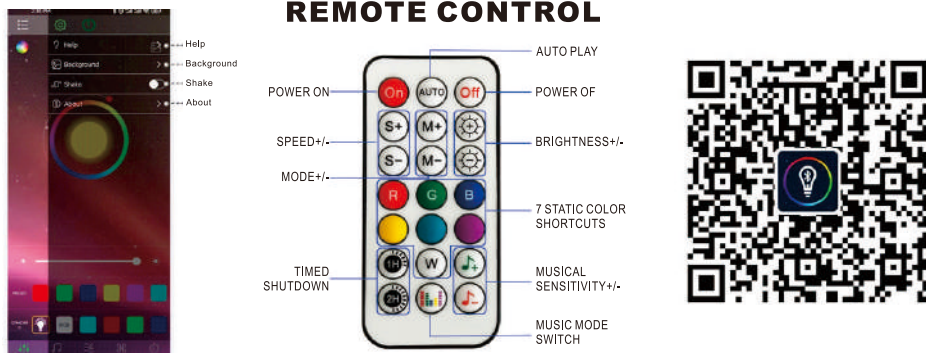
297.00 mm



RGB APP

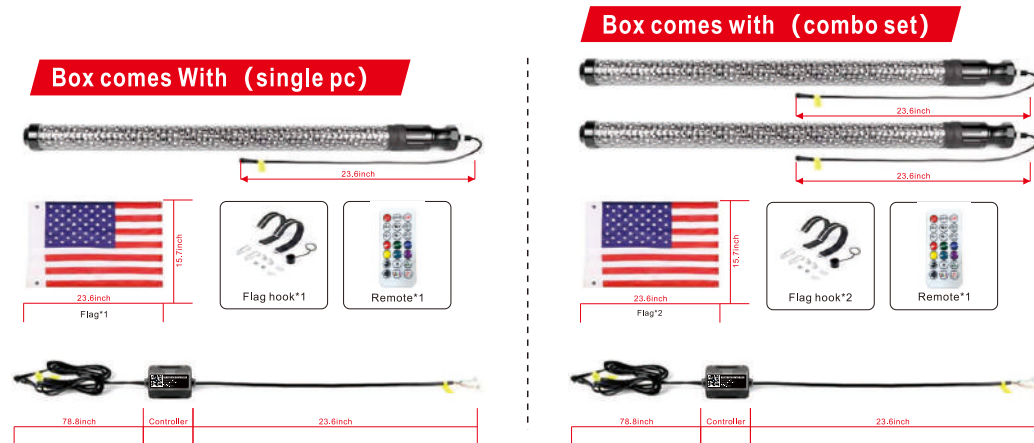


REMOTE CONTROL



Scan the QR Code to download the application, or go to Google Play/App Store to search for the application Happy lighting and download it. Please refer to the APP operation guide of the setting page in the APP

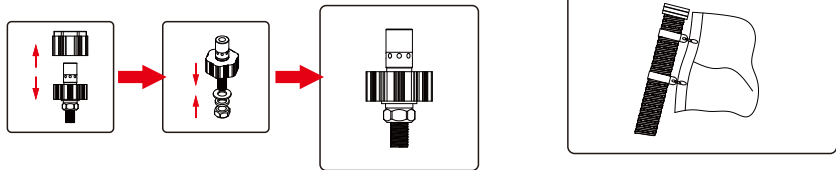
WHAT'S INCLUDED



STEP #1

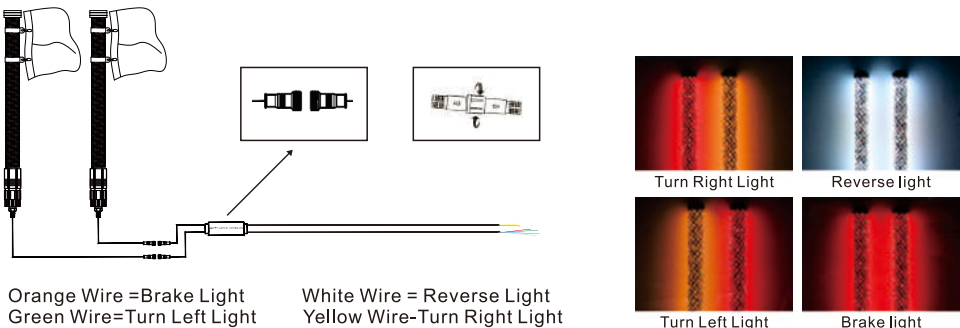
Mounting the led whip lights

- a: Mount the base in desired location, the base requires a 0.5"(13mm) mounting hole.
- b: Put the flag into the LED whip's Hook.



STEP #2

Plug-and-play the quick disconnect connectors on the whip light and Happy lighting controller. Please note that arrow must be inline to connect and then screw together.



STEP #3

If you purchased single pc, please refer to the Wire Diagram #A
If you purchased combo set, please refer to the Wire Diagram #B

Wiring diagram#A

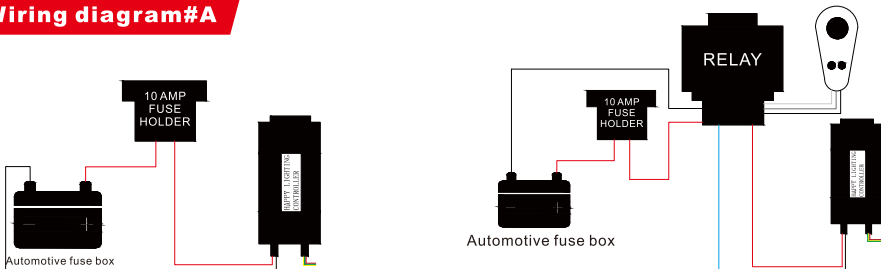


Diagram1:
Wiring direct to Automotive fuse box and using APP or RF remote control to turn on/off. Need to add 10AMP fuse on red 12V+ wires.

Diagram2:
Wiring with a switch. You can add a new dedicated switch or use an existing light Switch that outputs 12V+ when ON. You will need to add a 10AMP fuse on the RED 12V+ wire and also requires a 12V relay. Note: Fuses and relays are not included in the accessories.

Wiring diagram#B

Diagram1

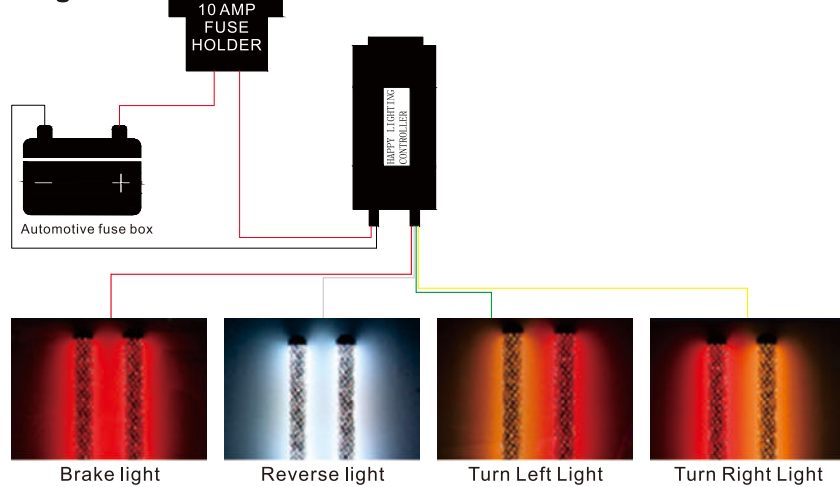


Diagram1: Wiring direct to Automotive fuse box and using APP or RF remote control to turn on/off. Need to add 10AMP fuse on red 12V+ wires.

Diagram2

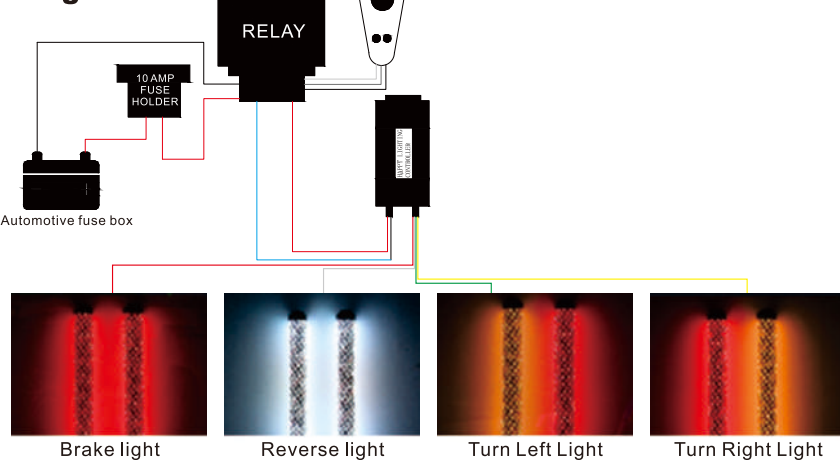


Diagram2: Wiring with a switch. You can add a new dedicated switch or use an existing light switch that outputs 12V+ when ON. You will need to add a 10AMP fuse on the RED 12V+ wire and also requires a 12V relay. Note: Fuses and relays are not included in the accessories

FCC WARNING

This device complies with part 15 of the FCC Rules. Operation is subject to the following two conditions: (1) this device may not cause harmful interference, and (2) this device must accept any interference received, including interference that may cause undesired operation.

Any changes or modifications not expressly approved by the party responsible for compliance could void the user's authority to operate the equipment.

NOTE: This equipment has been tested and found to comply with the limits for a Class B digital device, pursuant to Part 15 of the FCC Rules. These limits are designed to provide reasonable protection against harmful interference in a residential installation. This equipment generates, uses and can radiate radio frequency energy and, if not installed and used in accordance with the instructions, may cause harmful interference to radio communications. However, there is no guarantee that interference will not occur in a particular installation.

If this equipment does cause harmful interference to radio or television reception, which can be determined by turning the equipment off and on, the user is encouraged to try to correct the interference by one or more of the following measures:

- Reorient or relocate the receiving antenna.
- Increase the separation between the equipment and receiver.
- Connect the equipment into an outlet on a circuit different from that to which the receiver is connected.
- Consult the dealer or an experienced radio/TV technician for help.

To maintain compliance with FCC's RF Exposure guidelines, This equipment should be installed and operated with minimum distance between 20cm the radiator your body: Use only the supplied antenna.