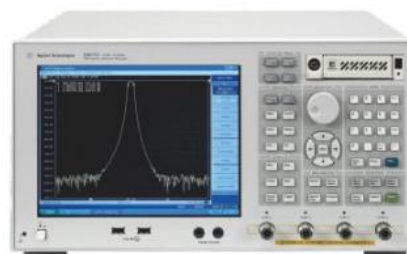


Skyline report

1. Test the equipment



OTA-800
品牌: ETS ✓
频率范围: 370MHz-8.5GHz
功能: 无源、有源测试; G网、C网、2G/3G/4G, WIFI, BT等制式TRP、TIS测试。



5071C
品牌: 安捷伦 ✓
频率范围: 9KHz-8.5GHz
功能: 2G/3G/4G/BT/WIFI等天线综合无源测试。

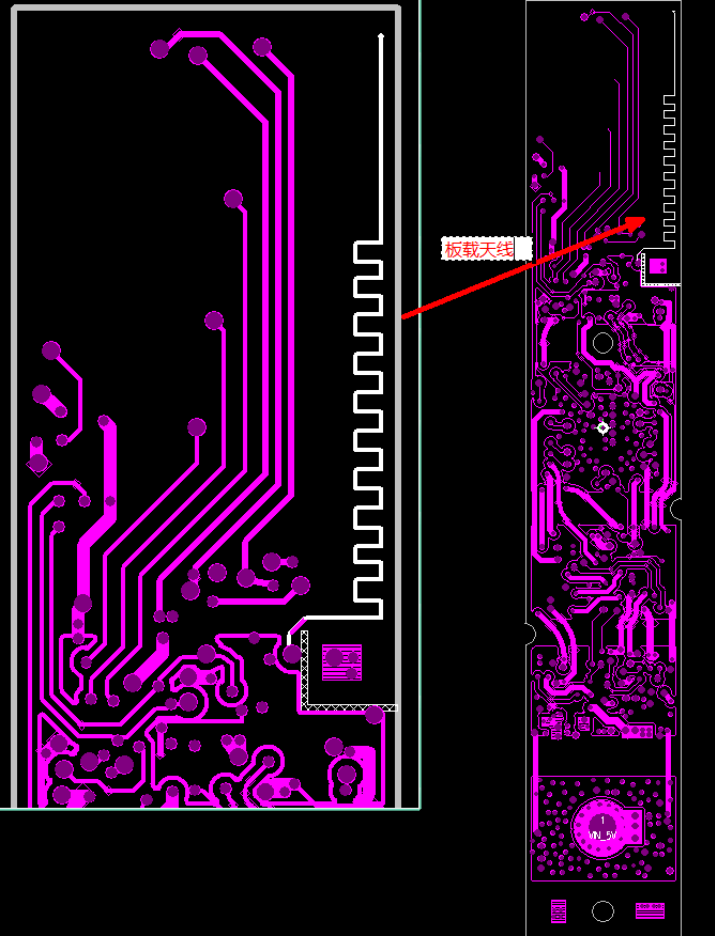


8960
品牌: 安捷伦
频率范围: 292MHz-2700GHz
功能: 满足2G/3G有源测试。



CMW500
品牌: 罗德与施瓦茨
频率范围: 70KHz-6GHz
功能: 2G/3G/4G/BT/WIFI/NB-Lot等天线综合有源测试。

2. Day chart



3. Electrical performance indicators

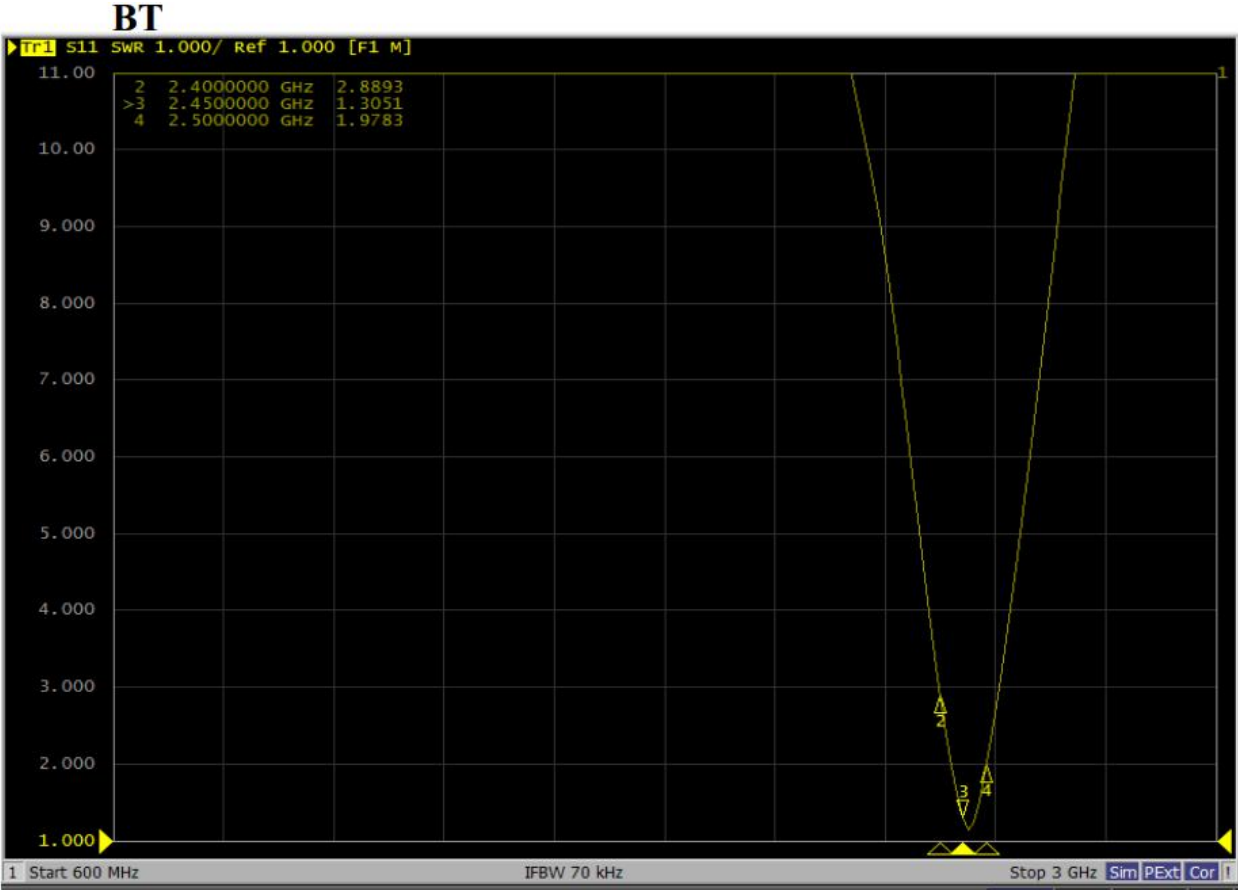
电性能指标 Electrical Parameter		
频率范围(MHz)	Frequency Range (MHz)	2400~2500
电压驻波比	VSWR	≤2.9
输入阻抗(Ω)	Input Impedance(Ω)	50
增益(dBi)	Gain(dBi)	-11.83
辐射效率 (%)	Radiation efficiency(%)	1.8%
最大功率(W)	Max power(W)	7.5
天线类型	Antenna Type	单极 (monopole)
工作温度($^{\circ}\text{C}$)	Working Temperature($^{\circ}\text{C}$)	-40~+80

Manufacturer: Huizhou Jiashang Electronic Technology Co., LTD

Manufacturer address: No.3Plant, Qiaoxing Science Technology&Industrial Zone

Tangquan Huizhou, Guangdong, China

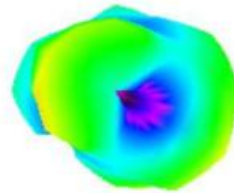
4. Antenna S11 data



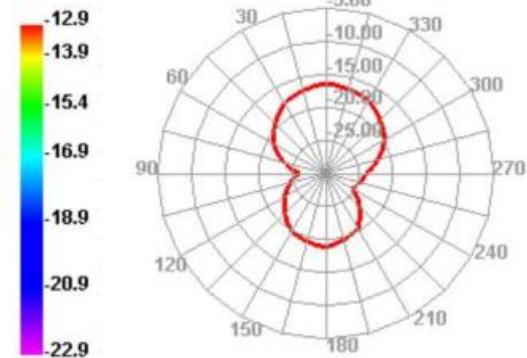
5. Antenna gain/efficiency

BT		
Freq (MHz)	Effi (%)	Gain (dBi)
2400	1.63	-12.21
2410	1.71	-11.83
2420	1.55	-12.21
2430	1.52	-12.34
2440	1.72	-12.1
2450	1.52	-12.92
2460	1.87	-12.41
2470	1.83	-12.85
2480	2.33	-11.85
2490	1.73	-12.97
2500	2.05	-11.9

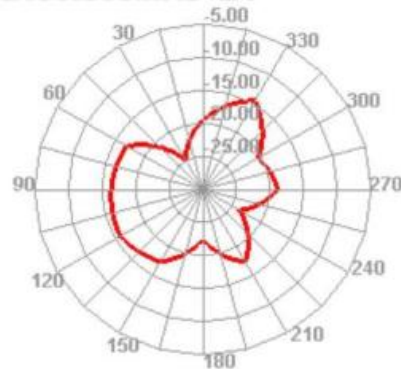
2450.000MHz



2450.000MHz H



2450.000MHz E1



2450.000MHz E2

