

# 折页后, 成品尺寸80\*83mm

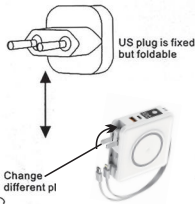
## User Manual Travel Charger Power Bank

### Specification

Capacity:15000mAh **3.7V** 65.6 Wh MIN:9600mAh  
 Input:100-240V~50/60Hz 0.5A Type-C PD 5V=3A/9V=2A  
 Charger mode Output:5V=3A(Total)  
 Power bank Output:Type-C PD3.0 5V=3A/9V=2A  
 USB QC3.0 5V=2.4A/9V=2A Wireless:9V 1.67A(15W)  
 Cable Output:Type-C 5V=3A/9V=2A Micro & Lightning 5V=2A  
 Total Output: Cable+Type-C+USB+Wireless:5V=3A  
 Size:85x85x34.5mm  
 Weight:258g

### Using the adapters

1. UK/EU/AU adapters:Attach the appropriate adapter to the charging base/US adapter:pull the adapter out from the charging base then plug into plug socket and switch on the power.
- 2.Insert your USB cable into one of the USB ports and connect to your device.
- 3.The light will turn blue for a moment and then turn green again to confirm that it's charging.



### Optional Plug for Global Travel

(US plug is standard in the package, more EU/AU/UK plug need additional cost if you need them.)



- 1.Lanyard
- 2.Power Button:Press once to show power display,Long press to turn off
- 3.Digital Power Display
- 4.Dual Way USB Type-C Input 18W & Output:PD 18W
- 5.USB-A Output:QC3.0 18W
6. Magnetic attraction
7. Foldable AC piug
8. Type-C QC3.0 Cable Output 22.5W
- 9.2 IN 1 Micro & Lightning Cable Output:12W

1. Switch  
Press it once to turn on USB output and wireless charging output  
It automatically turns off in 30 seconds under no-load status
2. Charging  
The LED digital power display blinks while charging  
It shows 100 after fully charged.
3. Wireless Charging  
Make sure your phone is equipped with Qi wireless charging receiver,  
otherwise, an additional wireless charging receiver is needed to install with your phone.

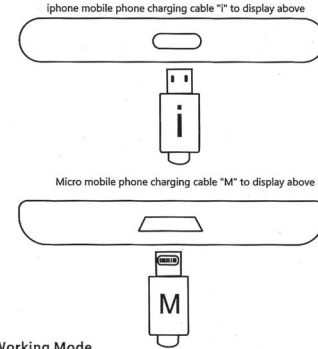


### Note:

- When using the Micro & Lightning cable, you need to plug in the Micro & Lightning cable first, and then turn on the switch.
- When the Type-C cable output is in fast charging status, the Micro & Lightning cable has no output.

### How to use 2 in 1 charging cable

Make the Micro&Lightning wire preferentially plugged into the hone and then turn on the switch



### Working Mode

#### Dis-Charging:

- \*Qi wireless charging is 7.5W/10W/15W fast charge while using Qi only, it becomes 5W when more USB output in use simultaneously
- \* Power Delivery (PD) is 18W max while using Type-C output only, it becomes common 5V 3A max when either Qi wireless charging or USB-A output in use simultaneously.Three outputs intelligently distribute the current

#### Charging:

- \* It's 5V 3A when use AC plug charging mode, charging time is about 3 hours
- \* Support pass-through charging, Type-C&USB-A output is 5V and intelligent current.

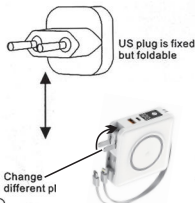
## User Manual Travel Charger Power Bank

### Specification

Capacity:15000mAh **3.7V** 37Wh MIN:9600mAh  
 Input:100-240V~50/60Hz 0.5A Type-C PD 5V=3A/9V=2A  
 Charger mode Output:5V=3A(Total)  
 Power bank Output:Type-C PD3.0 5V=3A/9V=2A  
 USB QC3.0 5V=2.4A/9V=2A Wireless:9V 1.67A(15W)  
 Cable Output:Type-C 5V=3A/9V=2A Micro & Lightning 5V=2A  
 Total Output: Cable+Type-C+USB+Wireless:5V=3A  
 Size:85x85x34.5mm  
 Weight:258g

### Using the adapters

1. UK/EU/AU adapters:Attach the appropriate adapter to the charging base/US adapter:pull the adapter out from the charging base then plug into plug socket and switch on the power.
- 2.Insert your USB cable into one of the USB ports and connect to your device.
- 3.The light will turn blue for a moment and then turn green again to confirm that it's charging.



### Optional Plug for Global Travel

(US plug is standard in the package, more EU/AU/UK plug need additional cost if you need them.)



- 1.Lanyard
- 2.Power Button:Press once to show power display,Long press to turn off
- 3.Digital Power Display
- 4.Dual Way USB Type-C Input 18W & Output:PD 18W
- 5.USB-A Output:QC3.0 18W
6. Magnetic attraction
7. Foldable AC piug
8. Type-C QC3.0 Cable Output 22.5W
- 9.2 IN 1 Micro & Lightning Cable Output:12W

1. Switch  
Press it once to turn on USB output and wireless charging output  
It automatically turns off in 30 seconds under no-load status
2. Charging  
The LED digital power display blinks while charging  
It shows 100 after fully charged.
3. Wireless Charging  
Make sure your phone is equipped with Qi wireless charging receiver,  
otherwise, an additional wireless charging receiver is needed to install with your phone.

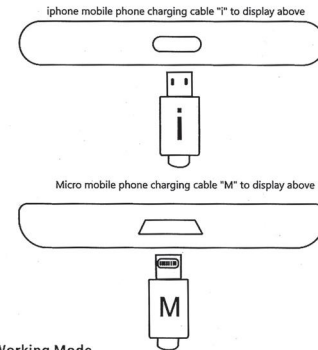


### Note:

- When using the Micro & Lightning cable, you need to plug in the Micro & Lightning cable first, and then turn on the switch.
- When the Type-C cable output is in fast charging status, the Micro & Lightning cable has no output.

### How to use 2 in 1 charging cable

Make the Micro&Lightning wire preferentially plugged into the hone and then turn on the switch



### Working Mode

#### Dis-Charging:

- \*Qi wireless charging is 7.5W/10W/15W fast charge while using Qi only, it becomes 5W when more USB output in use simultaneously
- \* Power Delivery (PD) is 18W max while using Type-C output only, it becomes common 5V 3A max when either Qi wireless charging or USB-A output in use simultaneously.Three outputs intelligently distribute the current

#### Charging:

- \* It's 5V 3A when use AC plug charging mode, charging time is about 3 hours
- \* Support pass-through charging, Type-C&USB-A output is 5V and intelligent current.

Any changes or modifications not expressly approved by the party responsible for compliance could void the user ' s authority to operate the equipment.

This device complies with Part 15 of the FCC Rules. Operation is subject to the following two conditions:

- (1) this device may not cause harmful interference, and
- (2) this device must accept any interference received, including interference that may cause undesired operation.

Note: This equipment has been tested and found to comply with the limits for a Class B digital device, pursuant to Part 15 of the FCC Rules. These limits are designed to provide reasonable protection against harmful interference in a residential installation. This equipment generates, uses, and can radiate radio frequency energy, and if not installed and used in accordance with the instructions, may cause harmful interference to radio communications. However, there is no guarantee that interference will not occur in a particular installation. If this equipment does cause harmful interference to radio or television reception, which can be determined by turning the equipment off and on, the user is encouraged to try to correct the interference by one or more of the following measures:

- Reorient or relocate the receiving antenna.
- Increase the separation between the equipment and receiver.
- Connect the equipment into an outlet on a circuit different from that to which the receiver is connected.
- Consult the dealer or an experienced radio/TV technician for help.