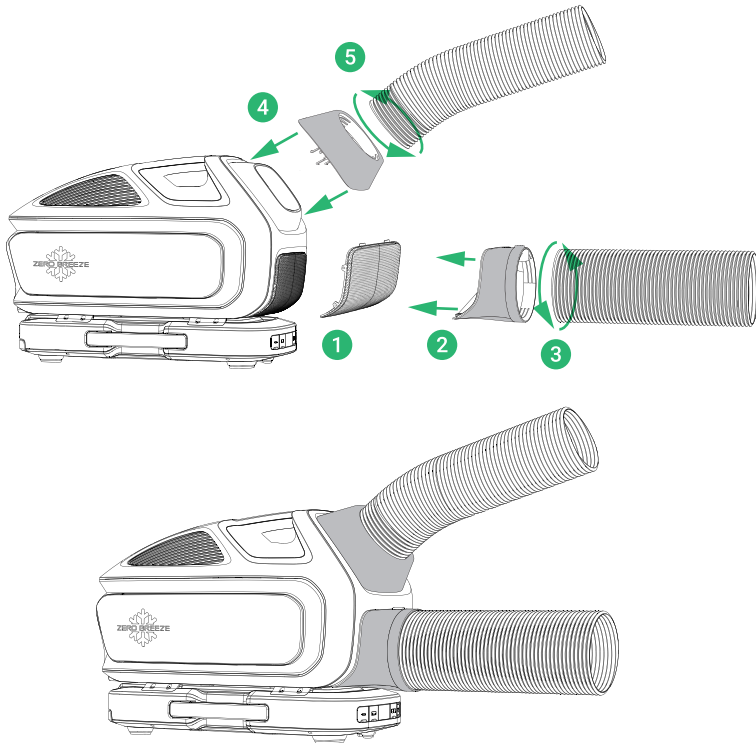


### Disconnecting Instructions:

- 1 Turn off the Mark 3 and battery.
- 2 Disconnect the power cord from the Mark 3.
- 3 Press the buckle on the back of the Mark 3.
- 4 While pressing the buckle, pull the Mark 3 back.
- 5 Remove the Mark 3 from the battery.

# Accessory Connection

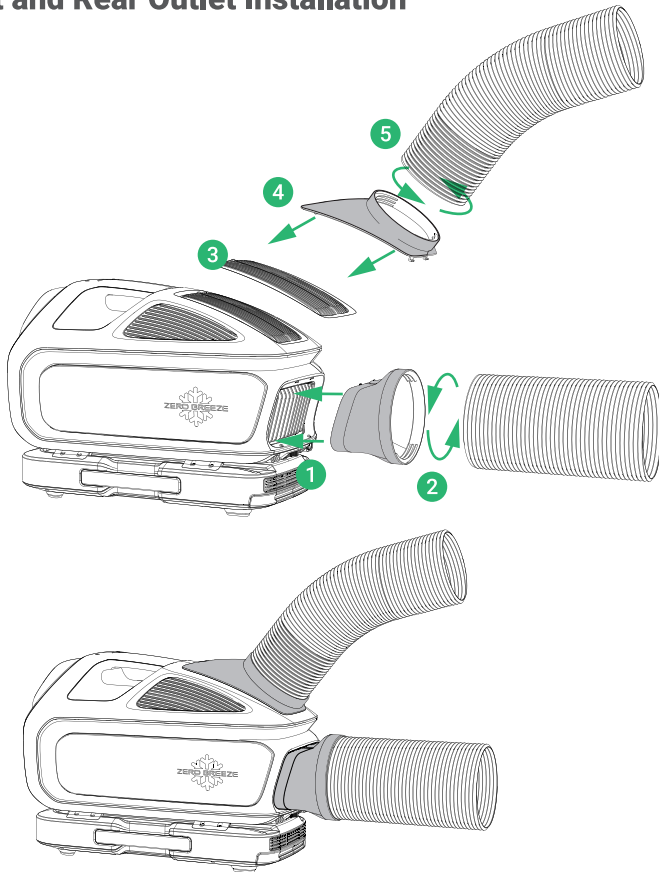
## Front Inlet and Front Outlet Installation



This configuration allows you to place the Mark 3 directly outside the area you are trying to cool and aim both ducts into the space to conserve room.

- 1 Remove the mesh filter.
- 2 Attach the front inlet adapter to the intake vent of the Mark 3.
- 3 Screw the front inlet duct to the adapter.
- 4 Attach the front outlet adapter by inserting it into the front blades of the Mark 3.
- 5 Screw the front outlet duct to the adapter.

## Rear Inlet and Rear Outlet Installation



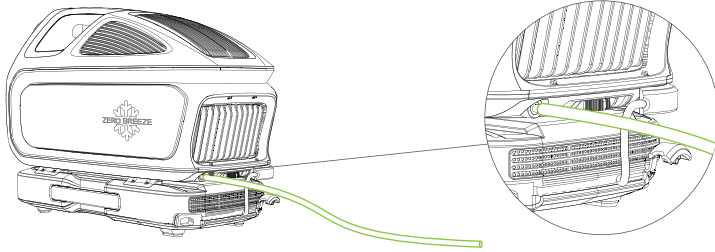
- 1 Attach the rear outlet adapter to the rear outlet vent of the Mark 3.
- 2 Screw in the rear outlet duct into the adapter.
- 3 Remove the vent cover.
- 4 Insert the rear inlet adapter into the rear inlet of the Mark 3.
- 5 Screw in the rear inlet duct into the adapter.

### Note:

- When using the Mark 3 in a large space or outdoor open space, the Mark 3 functions as a spot cooler.
- When using it in a confined space and wanting to cool down the area, there are two ways to place the A/C and ducts:
  1. Place the A/C inside while venting the rear inlet and outlet ducts out of the space.
  2. Place the A/C outside while directing the front inlet and outlet ducts into the space.
- Front inlet and rear inlet use the same duct.
- Be sure to store both accessories safely. Reattach them when the front ducts are no longer needed.

## Drainage Pipe Operation and Installation

Connect the drainage pipe to the drainage outlet to expel condensate from the Mark 3.



### Note:

- The outlet of the drainage pipe can be positioned up to 1 meter above the unit.
- Keep distance from the power supply.
- Ensure the hose is fastened properly and facing downwards to allow the water to flow smoothly.

## Usage Precautions

- The Mark 3 should be kept leveled at all times during use.
- Do not tilt the unit forward, backward or sideways when it is in use or being carried, otherwise, water may leak from the front and sides.
- Do not move the Mark 3 immediately after using. The Mark 3 will auto-drain the water for seconds after turning off.
- Even though, new water may be generated after turning off for several minutes. Please move it carefully.

Note: If there is leakage due to improper placement, do not be nervous. Simply wipe it up or allow it to cool naturally. It will not affect the performance of the machine.

