

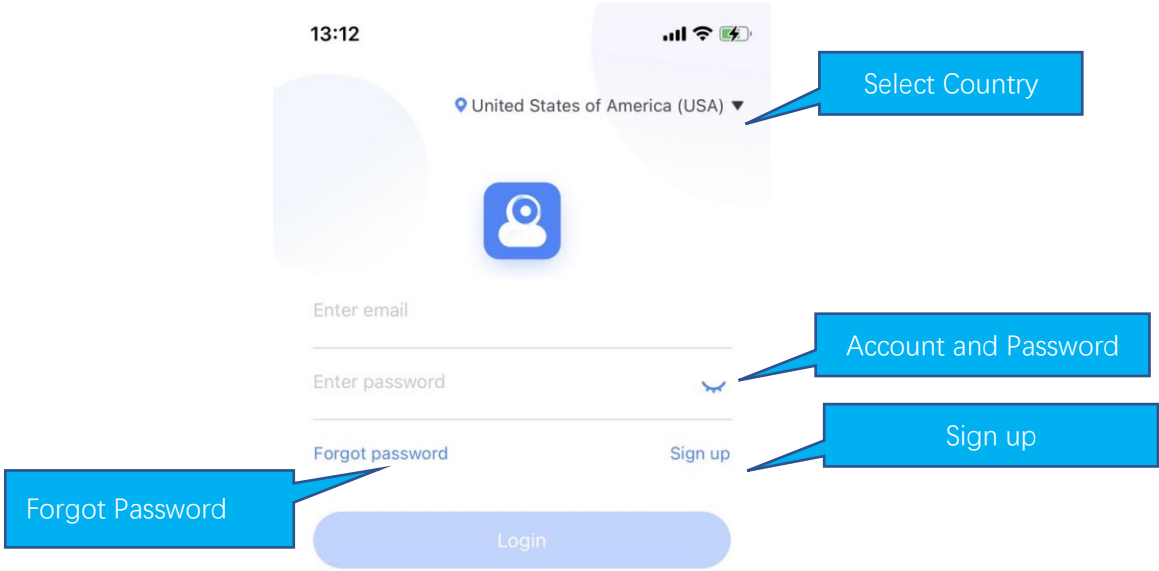


Smart camera Instruction



Scan QR code and download Yi IoT app

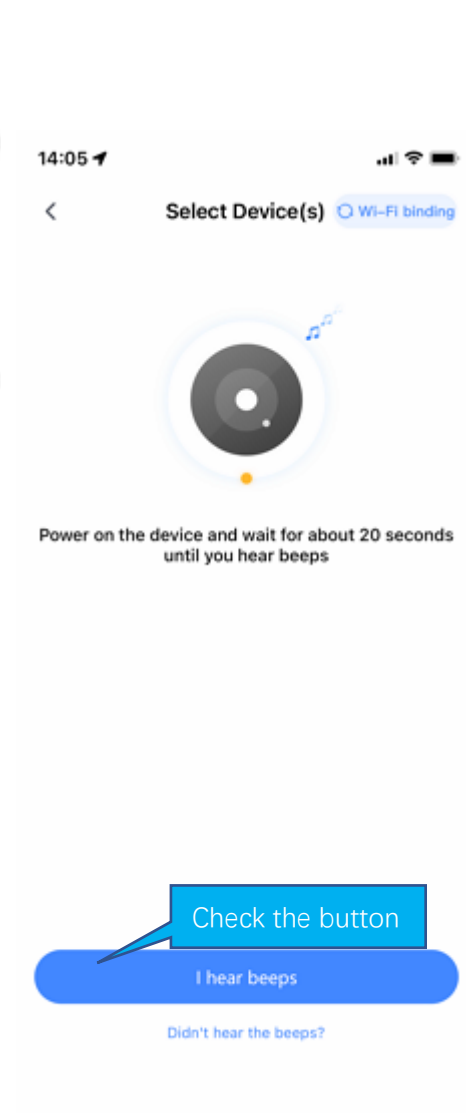
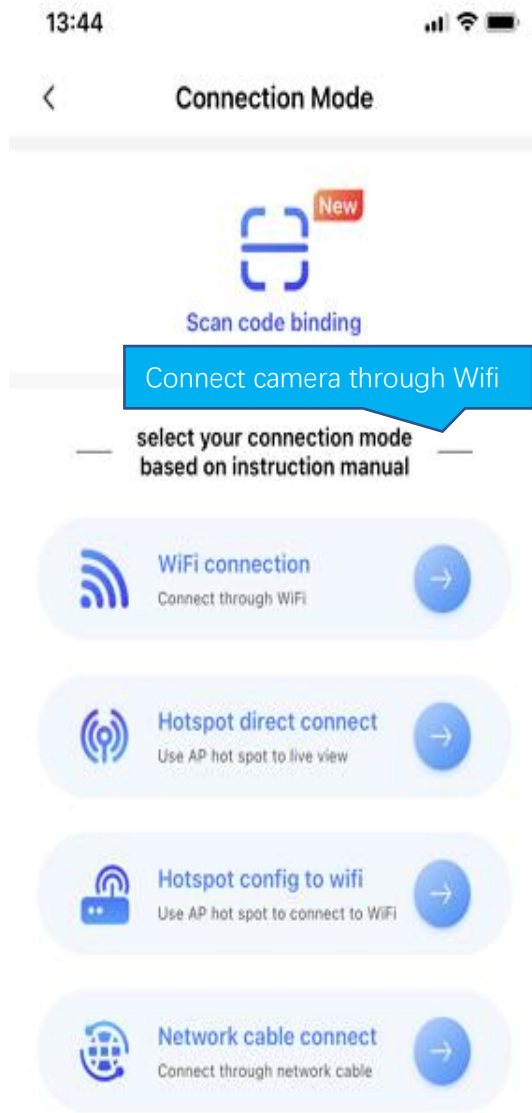
Sign up and log in



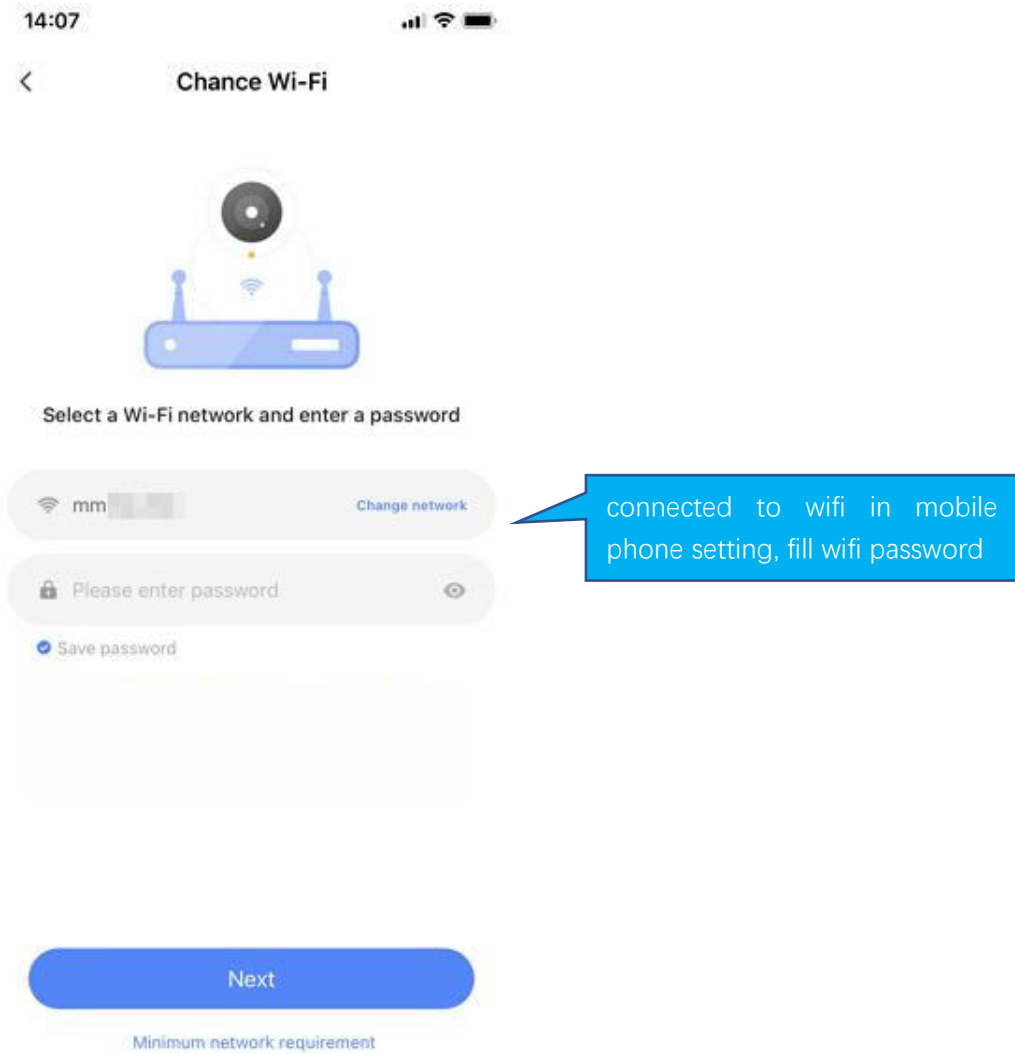
How to add camera

Method 1: Connect cameras with WI-FI

When the camera is powered on, the camera will beep continuously, waiting for the connection from the app. Then operate on the app as shown below.



If you don't hear the beeps, please press the "RESET" on the camera. Continue for more than 5 seconds, until you heard the beeps, that means the reset is successful.



Note:

1. Only support 2.4G. Please refer to the product hardware information.
2. Please turn on location of phone

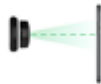
14:14



< QR code faces camera directly



try sonic binding >



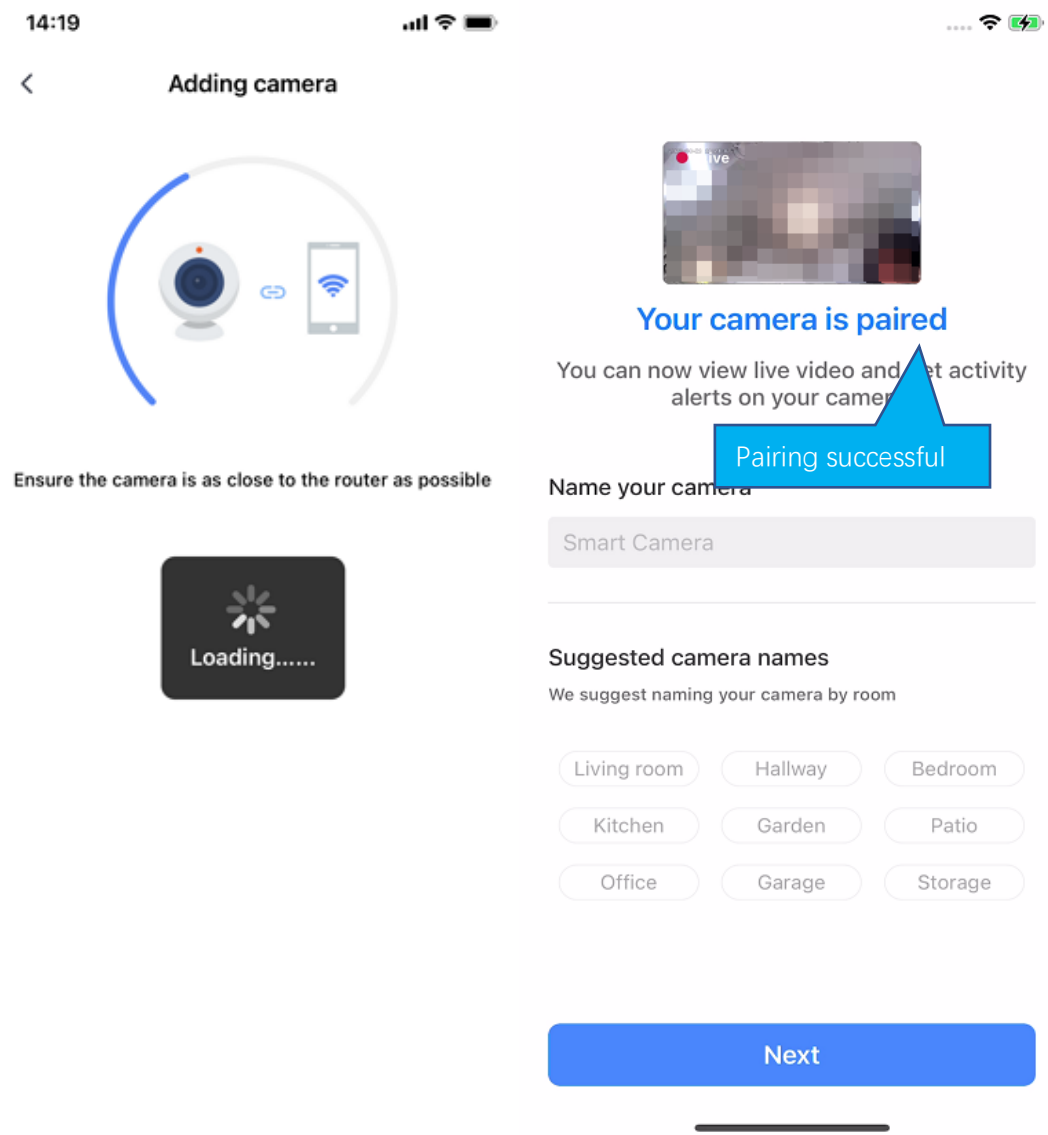
I heard "Waiting to connect"
If you hear tips, press next

Next

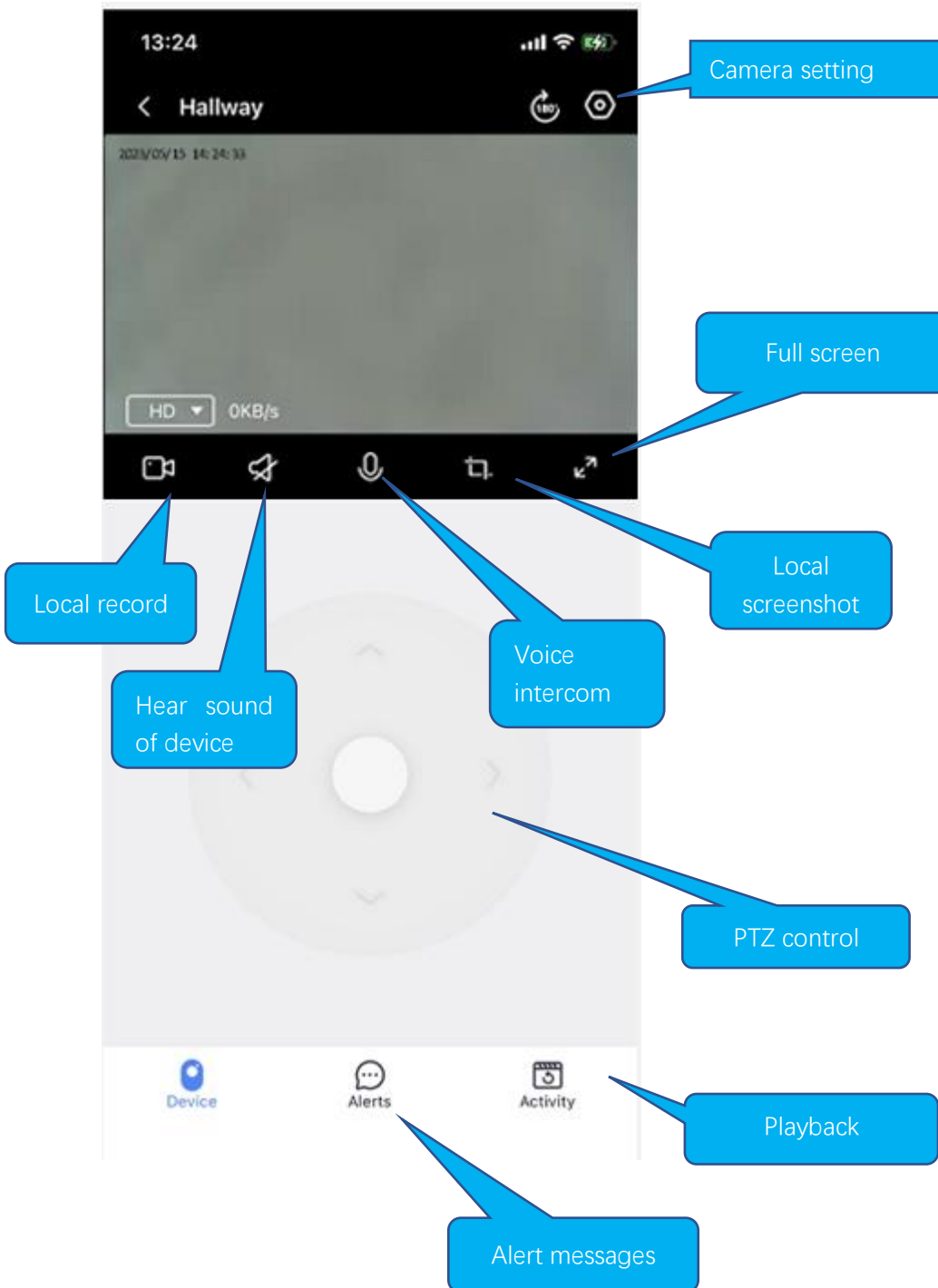
[? If you did not hear anything, tap here.](#)

The QR code that appears on the mobile phone is scanned against the camera lens, and the device emits a prompt sound "QR code scan successful" and "WiFi connected", click Next, and wait for the network configuration to be completed.

If the camera can successfully connect to Wi-Fi, the app will display the next page.



How to use app



Depending on the hardware capabilities, the functions displayed on the app may be different. If it isn't a PTZ camera, there isn't a PTZ control panel.



Camera setting

Full screen

Local record

Hear sound of device

Voice intercom

Local screenshot



No detected activities



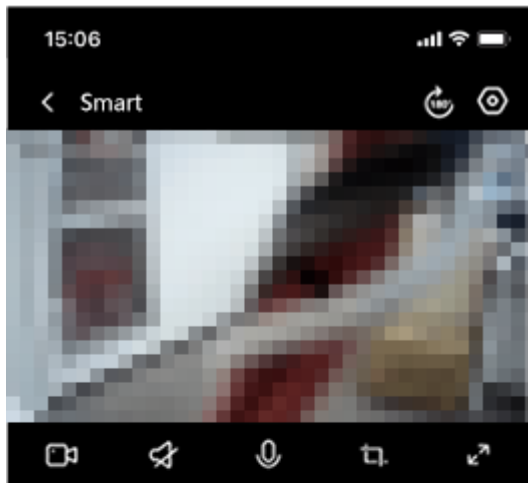
Alerts



Activity

Playback

Alert messages



< 2022-01-24 >



Smart

15:02

Motion Detected



Smart

14:59

Motion Detected

Alert clip



Smart

14:55

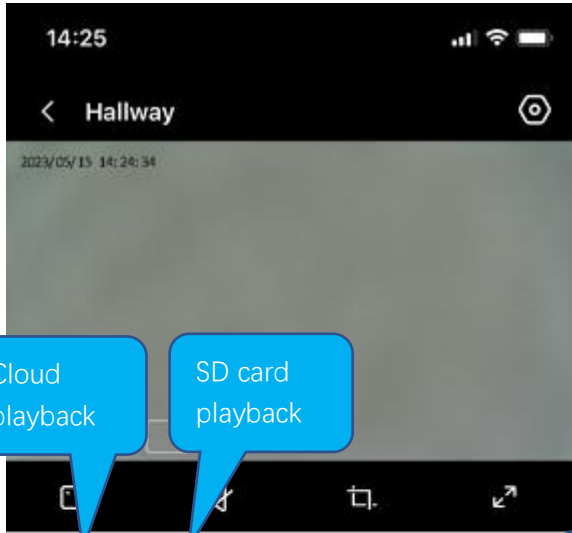
Motion Detected

Device

Alerts

Activity

Alert message



Cloud playback

SD card playback

Select date



Select time

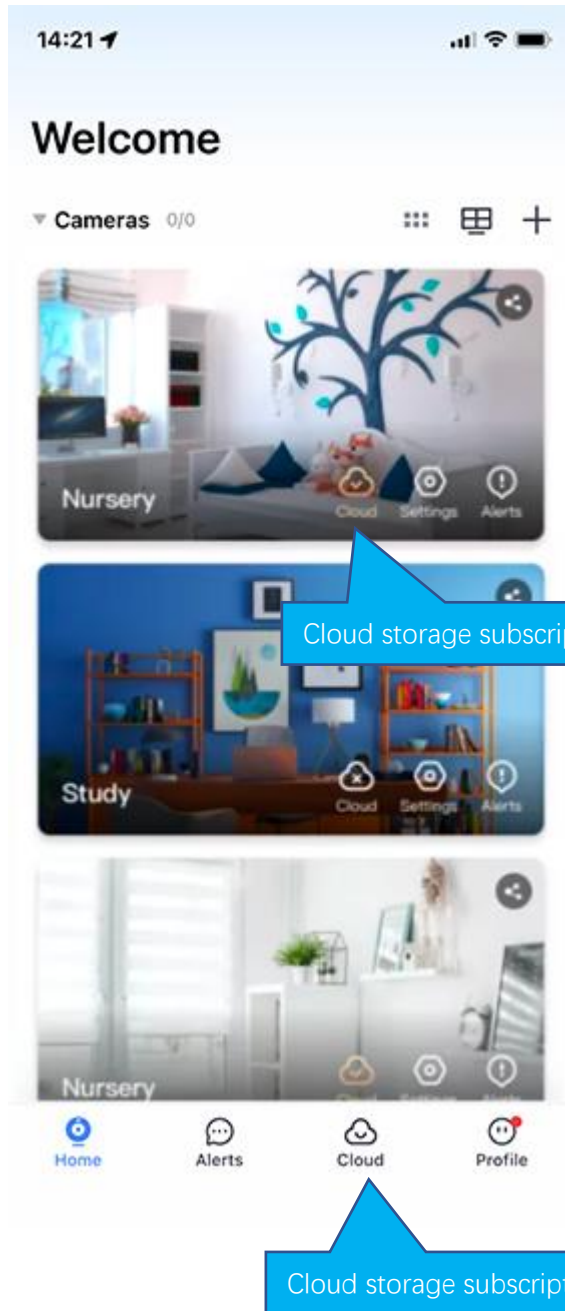


Alerts



Activity

Cloud storage



Common problems

Q: The camera is offline or offline

1. Check if the power supply is working properly
2. Power off and restart the device to reconnect to the network
3. The signal coverage is weak
4. Signal interference shielding in special places

Q: How does the camera store video

1. The camera supports the F32 format with a maximum capacity of 128G. After the card is recognized, it automatically records, and when the storage is full, it automatically overwrites the original recording and loops recording;
2. Support opening cloud storage service to store video;

For more app-related questions or issues, on the Profile tab in the app, we provide “Customer Service” or “Contact Us” options to help you.

Special statement

The product is subject to the actual product, the instruction manual is for reference only. Mobile phone app and device firmware version support update, users can upgrade through the app.

The manual may contain technical descriptions or inconsistencies with product functions or typographical errors. Please understand, please refer to the final interpretation of our company.

Do not install the product in a place where it is damp, dusty, high temperature, flammable or explosive and out of reach of children.

Note: This equipment has been tested and found to comply with the limits for a Class B digital device, pursuant to part 15 of the FCC Rules. These limits are designed to provide reasonable protection against harmful interference in a residential installation. This equipment generates, uses and can radiate radio frequency energy and, if not installed and used in accordance with the instructions, may cause harmful interference to radio communications. However, there is no guarantee that interference will not occur in a particular installation. If this equipment does cause harmful interference to radio or television reception, which can be determined by turning the equipment off and on, the user is encouraged to try to correct the interference by one or more of the following measures:

- Reorient or relocate the receiving antenna.
- Increase the separation between the equipment and receiver.

—

Connect the equipment into an outlet on a circuit different from that to which the receiver is connected.

- Consult the dealer or an experienced radio/TV technician for help.

This device complies with part 15 of the FCC Rules. Operation is subject to the following two conditions:

(1) This device may not cause harmful interference, and (2) this device must accept any interference received, including interference that may cause undesired operation.

This equipment complies with FCC radiation exposure limits set forth for an uncontrolled environment. This equipment should be installed and operated with minimum distance 20cm between the radiator and your body.



YiloT Camera Instruction

Scan the QR code to download