

## RF exposure statement

This equipment complies with the FCC radiation exposure limits set forth for an uncontrolled environment. This transmitter must not be co-located or operating in conjunction with any other antenna or transmitter.

## FCC Warning

This device complies with Part 15 of the FCC Rules. Operation is subject to the following two conditions:

(1) This device may not cause harmful interference, and (2) this device must accept any interference received, including interference that may cause undesired operation.

Note: This equipment has been tested and found to comply with the limits for a Class B digital device, pursuant to part 15 of the FCC Rules. These limits are designed to provide reasonable protection against harmful interference in a residential installation. This equipment generates, uses and can radiate radio frequency energy and, if not installed and used in accordance with the instructions, may cause harmful interference to radio communications. However, there is no guarantee that interference will not occur in a particular installation. If this equipment does cause harmful interference to radio or television reception, which can be determined by turning the equipment off and on, the user is encouraged to try to correct the interference by one or more of the following measures:

- Reorient or relocate the receiving antenna.
- Increase the separation between the equipment and receiver.
- Connect the equipment into an outlet on a circuit different from that to which the receiver is connected.
- Consult the dealer or an experienced radio/TV technician for help.

NOTE 2: Any changes or modifications to this unit not expressly approved by the party responsible for compliance could void the user's authority to operate the equipment.

# Luxury Massage Chair

## Operation Manual

AM12



# Contents

1. Directory .....	1
2. Safety precautions .....	2
2.1 Use environment .....	2
2.2 Those who are not suitable to use this appliance .....	2
3. Preparation before use .....	3
3.1 Cushion installation .....	3
3.2 Sitting posture adjustment .....	3
3.3 How to move the massage chair .....	4
3.4 Placement of the massage chair .....	4
3.5 Turn on the power .....	5
4. The main structure name and function .....	6
5. Brief introduction of control panel function .....	7
6. The massage procedure operating instructions .....	8
7. Daily maintenance .....	9
8. Technical parameters .....	9

## — Warranty —

Warranty: 1 year after shipment.

One of the following conditions is not covered by the warranty:

1. Consumer use. Damage caused by improper storage and maintenance.
- Inspection number:
2. The damage is caused by disassembly, assembly and repair by the customer personally.
  3. Damage caused by force majeure.
  4. Leather covers, hand-controlled and consumable accessories are not covered by the warranty.
  5. This product is used for non-household purposes and will not be covered by the warranty.
  6. Faults caused by man-made or improper use are not covered by the warranty.
  8. The failure of the machine caused by the accessories that do not meet the product parameters which purchased privately is not within the scope of the warranty, and the accidents caused are not within the scope of our responsibility.
  9. For products that are not covered by the warranty, we still can offer you spare parts with cost price.

#### 4, mode switching

Automatic mode: According to the automatic mode, there are 5 automatic programs to choose.

Manual mode: In the automatic power-on mode, press other function buttons to switch to manual mode.

One or more massage functions.

#### 5, Bluetooth connection instructions

●Bluetooth is turned on and have prompt tone by default when massage chair is turned on.

## 7, Daily maintenance

(1) The massage chair should be kept clean and dust-free at all times and placed in a non-damp place.

(2) If you will not use it for a long time, please cover it with a cloth.

(3) Do not place the massage chair in the sun or in a place with high temperature, which will cause the skin of the massage chair Leather fades and accelerates aging.

(4) To clean the massage chair, please turn off the main power switch and pull out the power plug.

(5) Do not use cleaning agents containing organic solutions, such as benzene, to clean the massage bridge, otherwise it will cause the leather to fall off Color, aging, cracking, etc.

(6) If the power cord is damaged, you must use a dedicated cord or a dedicated set purchased from its manufacturer to replace.

## 8. Technical parameters

Product name: Massage chair

Product model: A12A

Rated voltage: 220V-

Rated frequency: 50Hz

Rated power: 90W

Zhuanding working time: 15-30min

Executive standard: GB4706. 10-2008

GB4706.1-2005

Product safety design: 1

## 2. Safety precautions

### A. Safety precautions

- (1) Do not use or keep this machine in particularly humid environments such as bathrooms, saunas, hot springs, etc., so as not to cause hair damage. Mold, electric shock, fire or mechanical failure.
- (2) Do not use in an environment where the room temperature is above 40 degrees Celsius. Text
- (3) Do not use this machine outdoors.
- (4) Do not use the machine in an environment with too much dust, oil, or lack of oxygen.
- (5) Do not place the machine in a hot air stove, stove or a place exposed to direct sunlight, which will cause the machine in the massage chair The parts overheat and cause fire.
- (6) Do not use this machine on uneven places. Please place the bracket on a level place such as the floor use.
- (7) To prevent electric shock, please confirm whether the socket is grounded. Please consult the sales store when installing the ground wire in the socket.
- (8) Do not use when smoking.
- (9) When the airbag is inflated, do not pull out the limbs such as arms and legs, which will cause the airbag to fall off and need to return by itself.
- (10) Do not step on the sole roller or airbag, please pay attention when entering and leaving the massage chair! If it falls off, you need to fix it back by yourself.



### B. Those who are not suitable to use this appliance

The following people please consult a doctor before using (may cause physical discomfort or even accidents and cause danger)

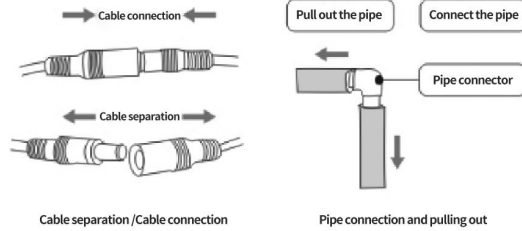
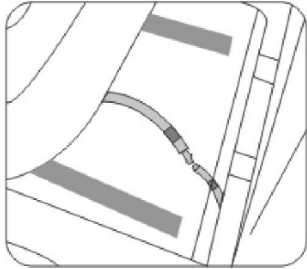
- (1) Patients suffering from malignant tumors or malignant lumps.
- (2) Patients with severe heart disease.
- (3) Patients with severe skin diseases.
- (4) Patients with severe bone hyperplasia.
- (5) Those who are pregnant.
- (6) Those who are undergoing medical treatment under the instructions of a doctor, especially those who feel abnormalities in their body.
- (7) Those who have abnormal spine or curved back due to accident or disease.
- (8) Those who need silence.
- (9) Those with joint deformities.
- (10) Those who have medical devices such as pacemakers in their bodies.
- (11) Those suffering from acute symptoms such as visceral diseases (such as gastritis, enteritis, dysentery, hepatitis, etc.).
- (12) Those with severe blood circulation disorders in the legs.
- (13) The device has a heating surface, so people who are not sensitive to heat must pay attention to it.
- (14) Those with high fever symptoms.
- (15) This product is not recommended for people who are physically impaired, sensory or mentally impaired, or lack relevant experience and knowledge. (Including children) use, unless someone responsible for their safety supervises and guides their use of this product.
- (16) Children should be taken care of and ensure that they do not play with this product.
- (17) If the power cord is damaged, it must be replaced with a special cord or special component obtained from the manufacturer or its maintenance department.



Don't let people under the age of 18 and those who cannot control their behavior Individuals (e.g. mentally ill, mentally handicapped, paralyzed, etc.) alone. Operate the massage chair or touch various parts of the massage chair. This situation is possible Inform It may cause electric shock or injury to the user or malfunction of the machine.

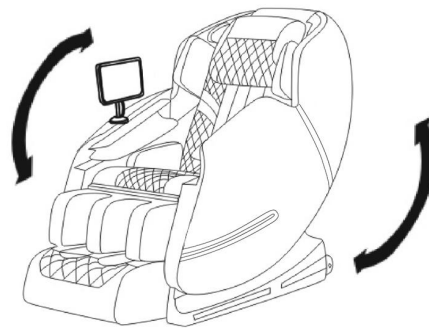
### 3. Preparation before use

#### A. Cushion installation



#### B. Sitting posture adjustment

Chair back adjustment, hold down the hand control adjustment switch  
Adjust the tilt angle of the chair back.



Requirements: When adjusting the backrest and leg cushions.  
Make sure to leave enough space before and after the massage.

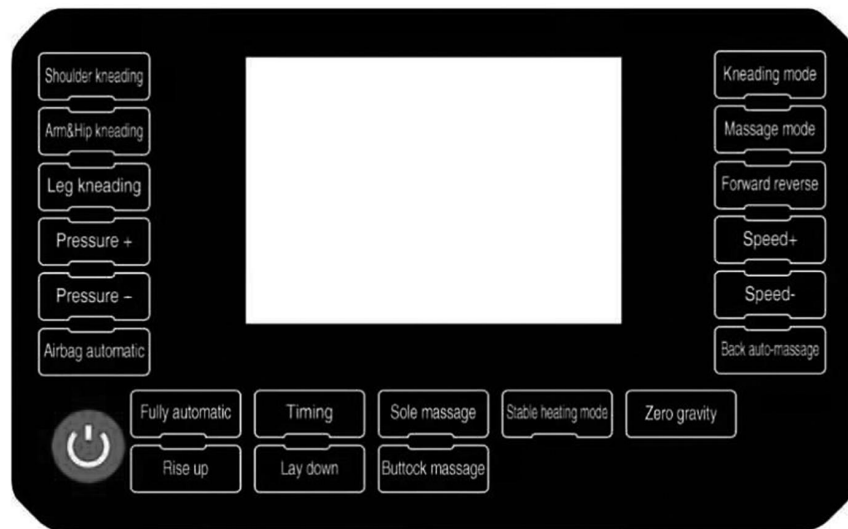
### 6. Massage procedure instructions



The default power-on enters the automatic mode; press the power button to adjust the time: 15 minutes, 20 minutes, 25 minutes, 30 minutes.

- Shoulder kneading** To turn on/off the head and shoulder massage function.
- Air&Hip kneading** Turns on/off the arm and buttocks massage function .
- Leg kneading** Turns on/off the leg airbag massage function.
- Kneading mode** Turn on/off the neck kneading massage function.
- Massage mode** Turn on/off the waist massage function.
- Forward reverse** Turn on/off the massage function of kneading forward and reverse.
- Airbag automatic** The whole body airbag massage function is turned on/off .
- Air pressure +** Turn on the airbag function button, press the air+" button, the air pressure will increase.
- Air pressure -** Turn on the airbag function button and press the "air pressure -" button to reduce the air pressure.
- Speed +** In manual mode, turn on the kneading and massage, press the "speed +" button to speed the kneading and massage
- Speed -** In manual mode, turn on the kneading and massage, press the "speed -" button to slow the kneading and massage
- Stable heating** Turns on/off the constant temperature hot compress function.
- Zero gravity** Turn on/off the zero gravity function.
- Fully automatic** F1. Full body automatic F2. Full body automatic F3. Full body automatic F4. Full body automatic F5. Full body automatic
- Sole massage** Turn on/off the sole control function.
- Buttock massage** Turn on/off the hip massage function.
- Rise up** To rise the massage chair back and foot massager up.
- Lay down** To lay down the massage chair back and foot massager.
- Back auto-massage** Turn on/off the automatic back massage function.
- Timing** Setting the massage time.

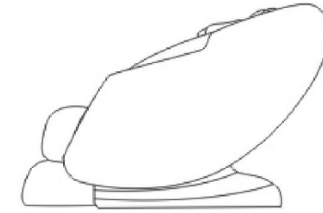
## 5. Functions for control pad



## C. How to move the massage chair

Move the armrests on both sides after lifting.

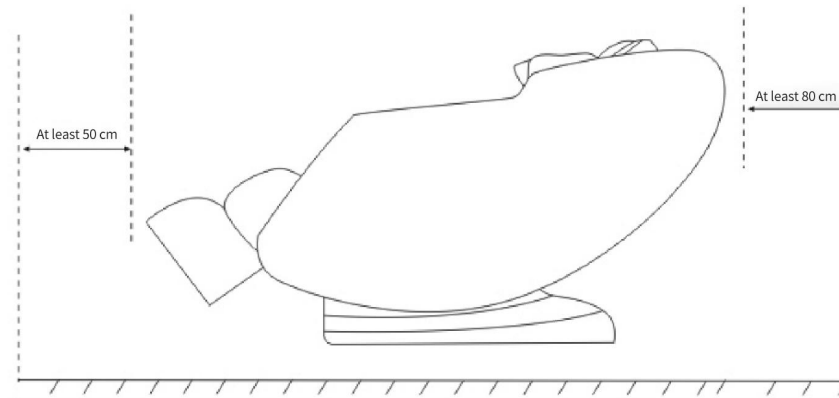
Attention! Don't move the chair when people sit on it. Don't move the chair with the roller in a place where the floor is easy to damage.



## D. Placement of the massage chair

Please leave enough space around the massage chair when preparing for the massage

- (1) The place where the massage chair is placed must have enough space to allow the chair back to recline and the foot massager to rise up.
- (2) Ensure a space of at least 80 cm behind the massage chair and at least 50 cm in front of it.
- (3) Ensure that there are no obstacles in front of and behind the massage chair.
- (4) In order to prevent damage to the floor, please place a piece of carpet under the massage chair to avoid damage to the floor.



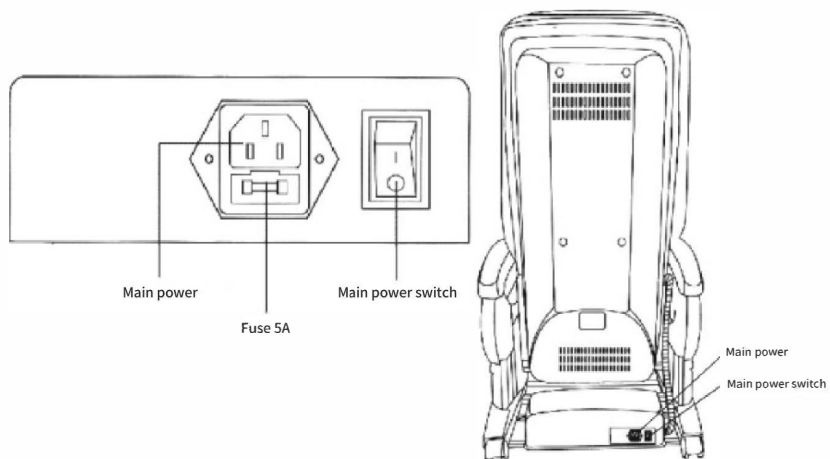
## E. Turn on the power

Insert the plug into the power socket and turn on the power switch.

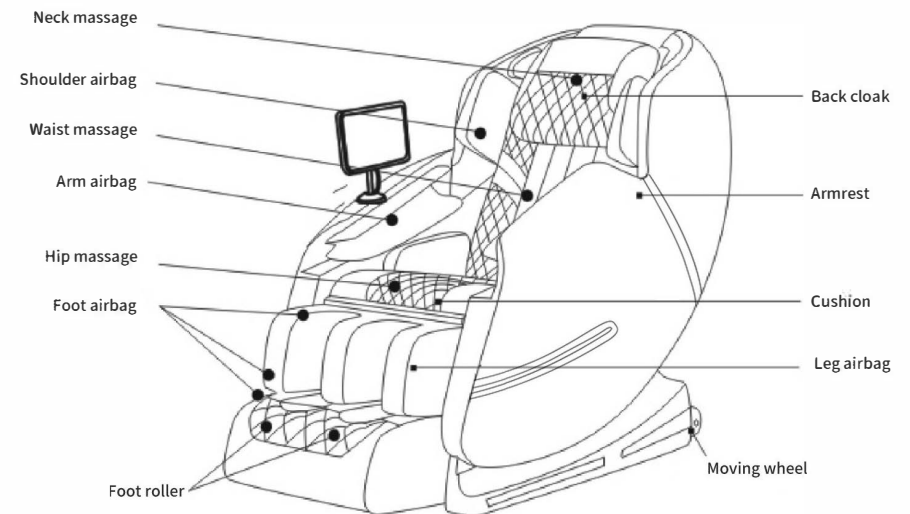


ATTENTION

- 1 Please check and make sure that the power cord is not pressed under the massage chair.
- 2 Whether the ground wire is connected well.
- 3 Before inserting the plug, make sure that all operation buttons (including the main power switch) are all closed.



## 4. Main structure name and function



Open your mobile device Bluetooth function and pair with the chair Bluetooth code "Massage Chair" , then you could play the music via speakers.

- 1)The connecting password for Bluetooth is "8888" if there is. The default setting is without password.
- 2)The Bluetooth speaker could only connect with one Bluetooth device at a time. Please turn off your Bluetooth device so others could enjoy it as well.