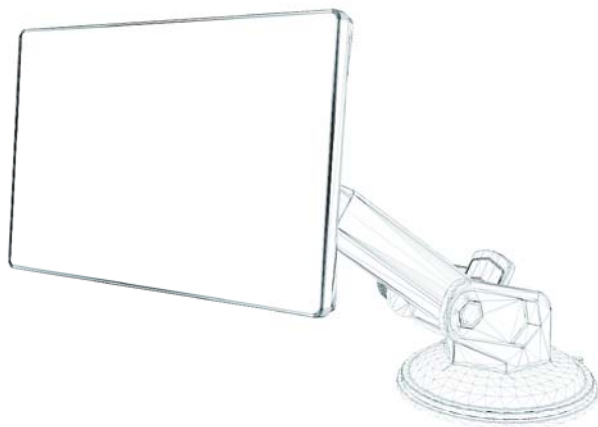


USER MANUAL

WIRELESS CARPLAY SCREEN



www.hxdotecfin.com

Catalogue

Trademark and Copyright Notices.....	01
Customer Service & Support.....	01
What's in the package.....	02
Product Specification	03
Where to place the CarPlay Screen on the vehicle?	04
How does CarPlay work?	07
How to use CarPlay, Airplay, Android Auto, Android Mirror	08
Camera installation	14

Trademark and Copyright Notices

Use of the Apple CarPlay logo means that a vehicle user interface in the Vehicle meets Apple's performance standards. Apple is not responsible for the operation of this vehicle or its compliance with safety and regulatory standards. Please note that the using this product with an iPhone may affect wireless performance. iPhone is a trademark of Apple Inc., registered in the U.S. and other countries.

The microSD logo is a trademark of SD-3C LLC. The Bluetooth® word mark and logos are owned by the Bluetooth SIG, Inc.

Availability of Android Auto™ availability may vary depending on your country and phone model. For more information, please visit android.com/auto for more information. Android, Android Auto, Google, and other marks are trademarks of Google Inc.

Customer Service & Support

Thank you for your purchase and your support. This Wireless CarPlay Screen is for iPhone/Android smartphones to use Apple CarPlay / Android Auto on factory cars without a multimedia system, if you have any issues with your order, please get in touch with our customer service at the following contact details. Do not hesitate to get in touch with us if you meet any difficulties installing the unit. We are always available to answer any of your questions and are happy to take your suggestions.

Website: www.hxdotecfin.com

Support: support@hxdotecfin.com

Important Notice

The power button (long press) on the CarPlay screen is for sleep mode only and does not turn off the device. When using the device for the first time, please check if the CarPlay screen can turn off automatically when the vehicle is turned off (this depends on the vehicle). If not, please unplug the cigarette lighter before leaving the vehicle to avoid draining the battery out.

I. What's in the package



9 Inch Wireless
CarPlay Screen * 1



Mount * 1



Mount*1



Backup Camera with
cable *1 (Optional)



AUX Cable *1



Car Charger *1

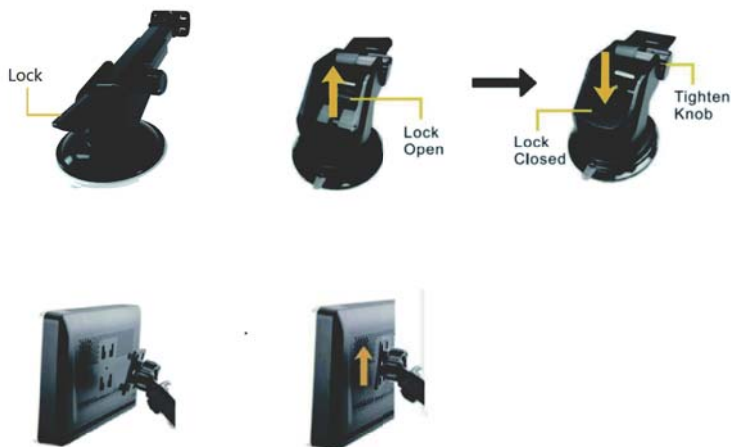
2. Product Specification

- 9" capacitive touch screen with 1024x600 pixels resolution
- Wireless Apple Car Play
- Wireless Android Auto
- MirrorLink function for Android and iPhone by wireless
- Backup Camera (Optional)
- Bluetooth for hands-free calling and audio streaming
- Voice Control with Apple or Android phones
- Bluetooth Wireless hands-free Function (A2DP) BT Music
- Support TF card & AUX IN Connectivity
- Support FM transmitter

A: Product Overview



B: Bracket overview and installation



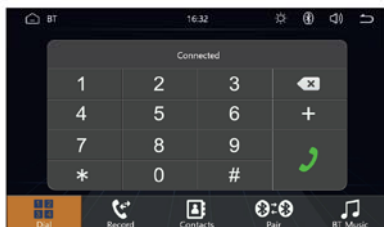
Place the bracket in the backside wholes of the device, Slide the bracket up then it will be fixed well

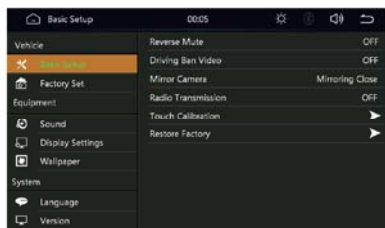
3. Where to place the CarPlay Screen on the vehicle?

There are two standard back mounts included in the package, users can install the device up to their idea for steady and safety.



4. Operating System Interface





Interface specification		
PhoneLink	Click to go to CarPlay,AirPlay,Android Auto,Android Mirror	
FM Transmit	Click to access the FM Transmitter Interface	
Apps	Click to view all available Apps	
BT	Click to access the BT Phone Interface, BT Music Interface	
Setup	Basic Setup	You can restore the factory if the car player doesn't work as expected. You can set some parameters for the rear-view camera
	Factory Set	Purpose for developer use, The User can ignore this menu
	Sound	you can change the sound effects if you want, available effect: Jazz, Classic, Rock, Pop, Flat, User
	Display Settings	You can adjust the brightness, contrast, hue, saturation
	Wallpaper	There are some pre-installed wallpapers, you can choose the ones you like for free setting
	Language	For language settings, English is the default
	Version	Check the system version of the car player

5. How does CarPlay work?

- Wireless CarPlay uses Bluetooth to set up the connection between the phone and the vehicle and then it switches to using WiFi for the actual functionality.
- After the Bluetooth pairing is successful, the phone's WiFi will automatically connect to the car player's WiFi, and then disconnect from Bluetooth by default
- When the car stereo is turned on, it will try to automatically connect to the last connected phone.

Based on the operation principle of the car player, please pay attention to the following:

1. When enjoying the wireless CarPlay/Android Auto function, the phone's WiFi will be occupied by the car player, other WiFi cannot be used during this period. If there is a conflict between other WiFi and the car stereo's WiFi, you may need to manually disconnect the other WiFi connection to maintain CarPlay/Android Auto use.
2. The car stereo's auto-connect feature requires you to keep the phone's WiFi and Bluetooth available. In addition, please set the car stereo's WiFi network of the car stereo to "Auto-Join".
3. Since the car stereo will disconnect the Bluetooth connection after pairing, your phone's Bluetooth may automatically connect to other devices, which may cause the car stereo mic input or sound playing to be unavailable. You may need to manually disconnect your phone from the other Bluetooth device or turn off the Bluetooth directly to resolve the issue.

(Bluetooth plays a pairing role in the operation of the car player. once it's paired, it only needs WiFi to keep working, so it doesn't matter if you turn Bluetooth off. But the next time you use it, you will need to turn on Bluetooth, so that the car stereo can be automatically paired and connected.)

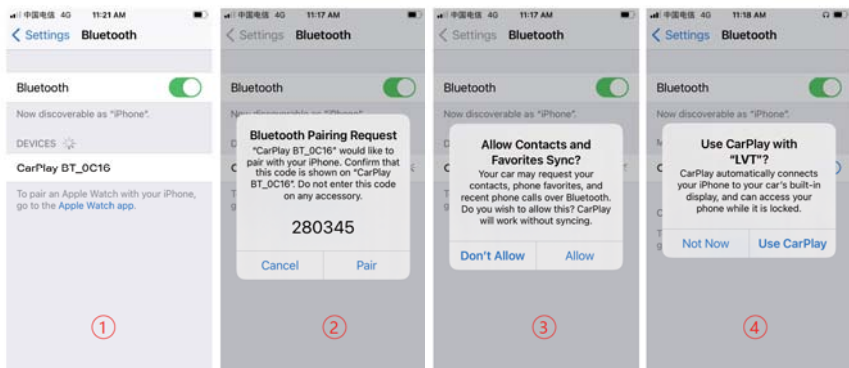
Important Notice !!

In the drop-down menu on the mobile phone, you must first click to turn off Bluetooth, then click the Turn-off WiFi button to disconnect. Just turn off the WiFi button alone, and the car player will keep trying to reconnect

6. How to use CarPlay, Airplay, Android Auto, Android Mirror

A: Apple CarPlay Setup and Connection

1. Click the CarPlay icon on the main menu of your stereo.
2. Turn on the Wi-Fi and Bluetooth of the iPhone first; Find the Bluetooth name "CarPlay BT_0C16" in the Bluetooth list, and click to pair, (If you need a PIN code, try 0000)
3. The "Allow Contacts and Favorites Sync" pop-up will appear on your iPhone, please click "Allow".
4. The pop-up "Use Carplay with "LVT" pop-up will appear on your iPhone, please click "Use Carplay" , and then the car stereo will automatically enter into the Carplay interface



Important Notice !!

Apple CarPlay Disconnection: Turn off WiFi to disconnect

Wireless CarPlay supported phone models that should be above IOS 9 and phone compatible with Carplay: iPhone 14, iPhone 14 Plus, iPhone 14 Pro, iPhone 14 Pro-Max, iPhone 13 Pro, iPhone 13 Pro-Max, iPhone 13, iPhone 13 mini, iPhone 12 Pro, iPhone 12, iPhone 12 mini, iPhone 11 Pro, iPhone 11 Pro Max, iPhone 11, iPhone XS, iPhone XS-Max, iPhone XR, iPhone X, iPhone 8, iPhone 8 Plus, iPhone 7, iPhone 7 Plus, iPhone 6s, iPhone 6s-Plus, iPhone 6, iPhone 6Plus, iPhone SE, iPhone 5s, iPhone 5c, iPhone 5

Currently, lower versions of the IOS system may not be able to use the Carplay

application. If you encounter compatibility issues with your phone's Carplay, please try upgrading the IOS system

B: AirPlay Setup and Connection

1. Turn on the WiFi named "carplay_wifi_xxxx" on your iPhone, Make sure the iPhone connects to the WiFi well.
Password" 12345678" if needed
2. Click the "Screen Mirroring" icon on your iPhone and then select "Car"

Important Notice !!

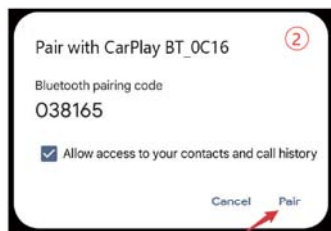
Airplay Disconnection: Turn off WiFi to disconnect

The above WiFi" carplay_wifi_xxxx" can be found when you are on the AirPlay screen as below, Otherwise, You may be unable to find the WiFi name listed on your iPhone



C: Android Auto setup and connection

1. Click the Android Auto icon on the main menu of your car stereo.
2. Turn on your phone's WiFi and Bluetooth first; pair the new device and find the Bluetooth name "CarPlay BT_0C16" in the Bluetooth list, click to pair, (If you need a PIN code, try 0000)
3. The "Pair with "CarPlay BT_0C16" pop-up will appear on your phone, please click "Pair".
4. The "Allow access to messages?" pop-up will appear on your phone, please click "Allow"; and then the car player will automatically enter into the Android Auto interface. When the car player is turned on, it will try to automatically connect to the last connected phone



Important Notice !!

Wireless Android Auto-supported phone models that should support 2.4Ghz WiFi and Google service:

Android Auto Disconnection: Turn off WiFi to disconnect
Android 11.0 or above system version,

Google or Samsung phones with Android 10.0

Samsung Galaxy S8; Galaxy S8+; Note 8 with Android 9.0

Open Android Phone Settings – Connection Settings, check if Android Auto is present, or search for Android Auto on the Settings page. If there is an Android Auto option, it means that the protocol connection is supported. If not, try restarting your phone and signing in to the Google Play Store to see if Android Auto can be found. If it is still not found or cannot be installed and used properly, it may be due to local policies/laws that do not support the application. Please verify that your country or region supports Android Auto wireless services.

D: Mirroring (Android Mirror) Setup and Connection:

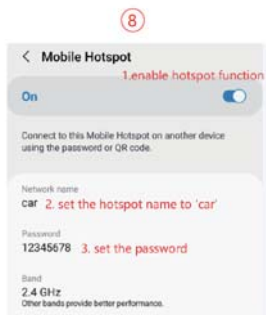
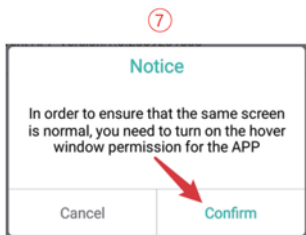
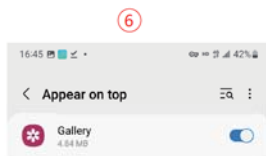
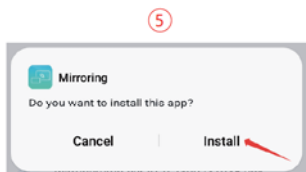
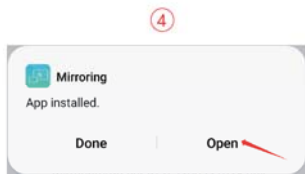
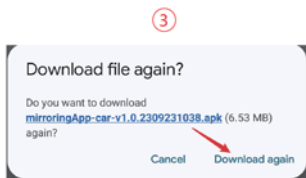
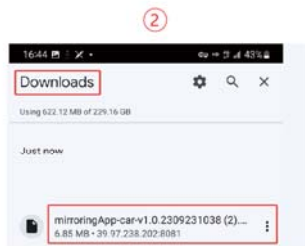
Bluetooth Name: CarPlay BT_0C16

Pin Code:0000 (if needed)

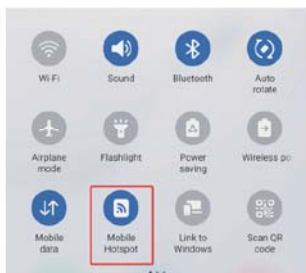
Ensure your phone's Bluetooth is well connected to the car stereo (a must for using the Mirroring feature), Then

1. Scan the QR code or go to the Google Play Store to download the APK named "Mirroring-car" and open the floating window permission

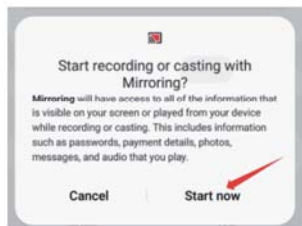
2. Turn on the hotspot on your phone. Turn off WiFi
3. Set the hotspot name to "car" and the password to "12345678" (Make sure all three letters are lowercase in the hotspot named "car")
4. Open the "Mirroring" APK on your phone



9



10



7, Camera installation

Fix the camera to the rear of the car with screws, the reversing trigger wire (red thin wire) needs to be connected to the positive pole of the reversing light, and finally use the camera extension cable to connect to the monitor.

Note: If you have any issues installing the backup camera, please contact us for help.



Warranty

2-year warranty with online registration online at hxdotec-fin.com. 1-year standard warranty.

FCC Warning

This device complies with part 15 of the FCC Rules. Operation is subject to the following two conditions:
(1) This device may not cause harmful interference, and (2) this device must accept any interference received, including interference that may cause undesired operation.

Any Changes or modifications not expressly approved by the party responsible for compliance could void the user's authority to operate the equipment.

Note: This equipment has been tested and found to comply with the limits for a Class B digital device, pursuant to part 15 of the FCC Rules. These limits are designed to provide reasonable protection against harmful interference in a residential installation. This equipment generates uses and can radiate radio frequency energy and, if not installed and used in accordance with the instructions, may cause harmful interference to radio communications. However, there is no guarantee that interference will not occur in a particular installation. If this equipment does cause harmful interference to radio or television reception, which can be determined by turning the equipment off and on, the user is encouraged to try to correct the interference by one or more of the following measures:

- Reorient or relocate the receiving antenna.
- Increase the separation between the equipment and receiver.
- Connect the equipment into an outlet on a circuit different from that to which the receiver is connected.
- Consult the dealer or an experienced radio/TV technician for help.

This equipment complies with FCC radiation exposure limits set forth for an uncontrolled environment. This equipment should be installed and operated with minimum distance 20cm between the radiator & your body.