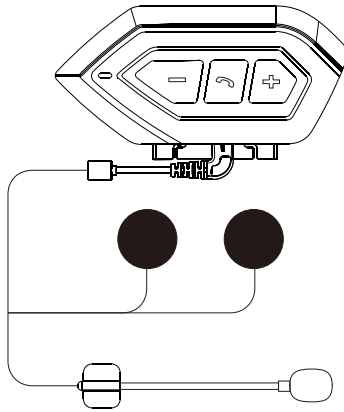
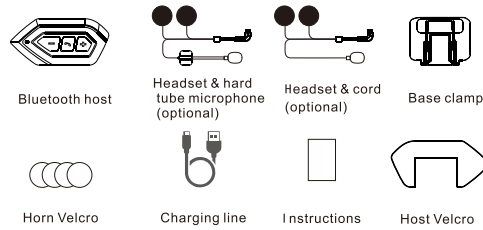


Helmet Bluetooth Headset

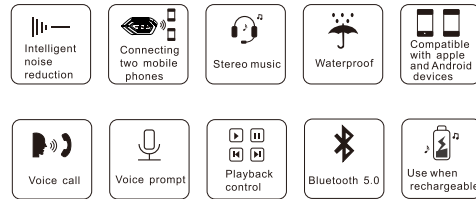
X6



1. Packing list

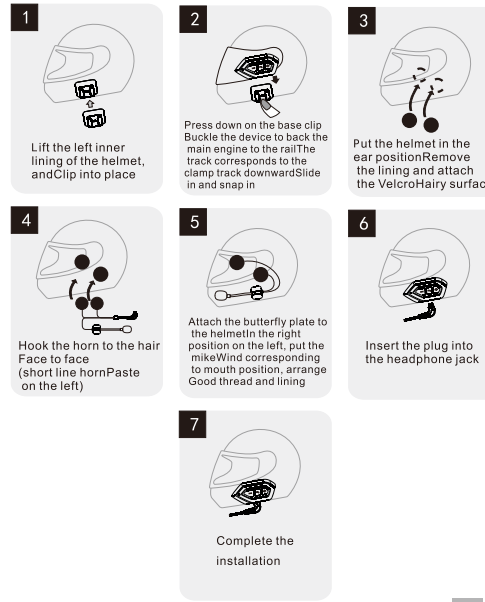


2. Function introduction

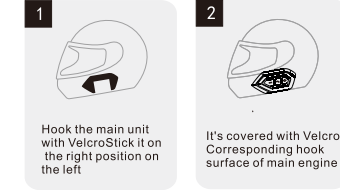


3. Installation procedure

3.1 Fix and install with clip

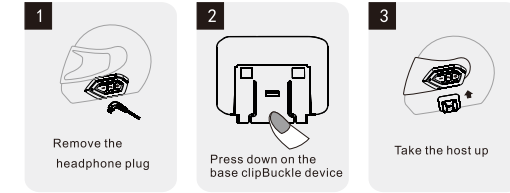


3.2 Fix and install the host through 3M glue

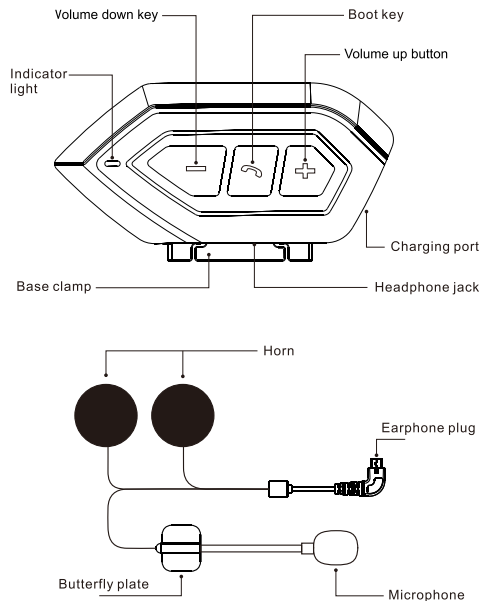


Refer to 3.1 for loudspeaker & microphone installation steps

4. Main engine disassembly steps



5. Product introduction



6. Key operation instructions

6.1 Boot key

- Key operating instructions turn on (press and hold for 3 seconds in the off state, and the blue light flashes quickly when you hear "Power On")
- Shut down (press and hold for 3 seconds while the machine is on, and the blue light will stay on for 1 second when you hear "PowerOff")
- Pairing mode (press and hold for 3 seconds while the machine is off, and the blue light flashes quickly. After the pairing is successful, the blue light flashes once every 6 seconds)
- Answer the phone (when the power is off in the connection state, press to answer the call or call the other party's mobile phone first. The number will be answered automatically)
- Terminate the call (short press to end the call)
- Refuse to answer a call (press for 3 seconds to reject the call)
- Redial (double click to redial the last call when connected)
- Music play / pause (press once in music mode)
- Chinese and English voice switching (double click before starting the phone without pairing)

6.2 Volume up button

- Volume increase (press and hold for a long time in the call/music state, and there is a "didi" prompt tone at the maximum volume)

- Next song (click briefly while playing music)

6.3 Volume down key

- Volume decrease (in call/music state, long press and hold, and there is a beep tone when the minimum volume is set)
- Last song (click briefly while playing music)
- Voice call (double click when there is no call status to enter voice call)

7. Bluetooth status indication and prompt

- Power on status (when Bluetooth connection is successful, the blue light flashes once every 6 seconds; when Bluetooth is disconnected, you hear "disconnect", and the blue light flashes quickly.)
- Low power alarm (prompt "battery low" every 5 minutes when the machine is on)
- Charging state (red light when charging, green light when fully charged)
- Voice prompt switching (double click the phone before turning on the phone without pairing, and you will enter the state of Chinese prompt tone when you hear "english Language selected")

8. Parameter specification

- Bluetooth version: 5.0
- Transmission distance: 10M
- Working hours: 40 hours
- Standby time: 300 hours
- Rechargeable battery: 3.7/800mA polymer lithium battery
- Charging time: about 3 hours
- Charging interface: Micro USB Android plug
- Charging voltage: USB 5V = 1A
- Bluetooth name: X6

9. Matters needing attention

- Do not touch the product with sharp objects to avoid scratch or damage
- Do not expose the product to open fire to avoid explosion hazard
- Do not attempt to disassemble the product to avoid product damage
- If the product is not used for a long time, please store it in a dry place and give the product regular charging (once a month) to ensure the normal operation of the product.

FCC Warning:

This equipment has been tested and found to comply with the limits for a Class B digital device, pursuant to part 15 of the FCC Rules. These limits are designed to provide reasonable protection against harmful interference in a residential installation. This equipment generates, uses and can radiate radio frequency energy and, if not installed and used in accordance with the instructions, may cause harmful interference to radio communications. However, there is no guarantee that interference will not occur in a particular installation. If this equipment does cause harmful interference to radio or television reception, which can be determined by turning the equipment off and on, the user is encouraged to try to correct the interference by one or more of the following measures:

- Reorient or relocate the receiving antenna.
- Increase the separation between the equipment and receiver.
- Connect the equipment into an outlet on a circuit different from that to which the receiver is connected.
- Consult the dealer or an experienced radio/TV technician for help.

Caution: Any changes or modifications to this device not explicitly approved by manufacturer could void your authority to operate this equipment.

This device complies with part 15 of the FCC Rules. Operation is subject to the following two conditions:

(1) This device may not cause harmful interference, and (2) this device must accept any interference received, including interference that may cause undesired operation.

This equipment complies with FCC radiation exposure limits set forth for an uncontrolled environment. This equipment should be installed and operated with minimum distance 0cm between the radiator and your body.