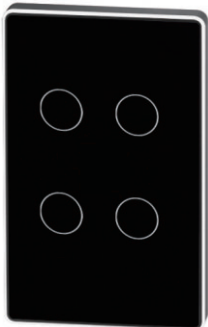


Smart Switch User Manual  
WiFi or Zigbee Version



Description

Thank you for purchasing our smart switch products. Please read this manual carefully before use to ensure that you can use the product safely, and keep the manual properly for reference when necessary.

This smart Wall Switch suitable for all incandescent lamp, energy saving lamp,LED lamp, tungsten lamp, electronic ballast fluorescent lamp, etc.

Please feel free to contact us if you have any question, we will try our best to service you.

Specification

Operating System: IOS9.0/Android4.4 or above

Wireless Type(optional): WIFI, or zigbee, or blue\_tooth, or WIFI+ blue\_tooth

Voice System Support: amazon alexa, Google Assistant

Wireless Control Distance: anywhere with 2G/3G/4G/5G network on your phone

Way to Control: Touch Control, App Remote Control, Voice Control,433 RF Control(optional)

Wiring Schematic

A.Live Wire Connect to "L" terminal

B.Neutral Wire connect to "N" terminal

C.GND wire connect to "GND" terminal

D.Lamp connect to "L1, L2, L3,L4" terminal

(Neutral Wire of lamp connect to "N", Live Wire of lamp connect to "L1 or L2 or L3 or L4" )

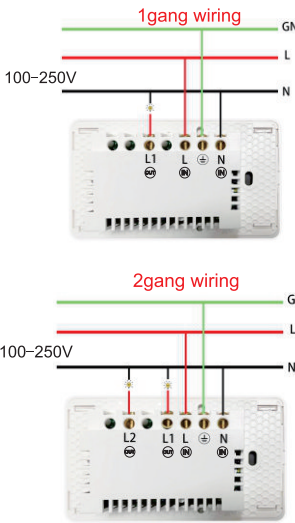
Product parameters

| Product Name        | WiFi neutral switch                                 | Zigbee neutral switch                               | Zigbee no neutral switch       |
|---------------------|---|---|--------------------------------|
| Wireless Type       | WiFi  | Zigbee  | Zigbee                         |
| Wireless Standard   | IEEE802.11b/g/n                                     | IEEE802.15.4  | IEEE802.15.4                   |
| Working Current     | 100-250V/AC   | 100-250V/AC   | 100-250V/AC                    |
| Working Temperature | -20°C~45°C  | -20°C~45°C  | -20°C~45°C                     |
| Max.Power at 110V   | Capacity load 200W/Gang<br>Resistive load 400W/Gang | Capacity load 200W/Gang<br>Resistive load 400W/Gang | 5W-300W/Gang                   |
| Max.Power at 220V   | Capacity load 400W/Gang<br>Resistive load 800W/Gang | Capacity load 400W/Gang<br>Resistive load 800W/Gang | 5W-300W/Gang                   |
| Working Humidity    | 10%-90%RH<br>(no condensation)                      | 10%-90%RH<br>(no condensation)                      | 10%-90%RH<br>(no condensation) |
| Storage Temperature | -20°C~45°C  | -20°C~45°C  | -20°C~45°C                     |
| Storage Humidity    | 30%~70%RH   | 30%~70%RH   | 30%~70%RH                      |

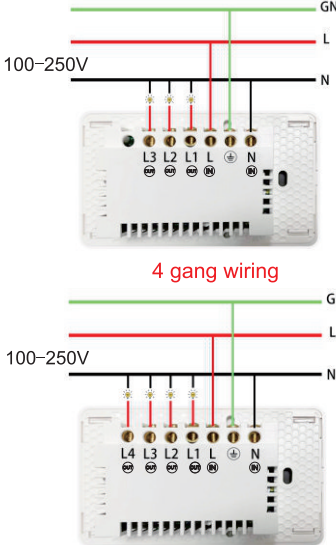
Precautions for single fire switch:

1. Please do not connect to special lighting appliances such as bathtub heaters, fans, and water heaters
  2. Do not connect lighting fixtures with a power greater than the specified power
  3. Load types: energy-saving lamps, LED lamps (non-linear lamps), incandescent lamps, fluorescent lamps
  4. Minimum support: 5W energy-saving lamp/9W LED lamp (non-linear lamp)/25W fluorescent lamp/25W linear lamp
  5. Connect according to the wiring diagram. Connecting the wrong wire will damage the equipment
  6. There should be no short circuit at the load end, as a short circuit can damage the equipment
  7. When the device cannot be controlled, please disconnect the power supply
  8. 1 circuit with 1 switch, and so on
  9. The equipment is equipped with high-precision components and cannot be used in high humidity environments
- The above precautions for installation and use may cause permanent damage to this product and other safety hazards

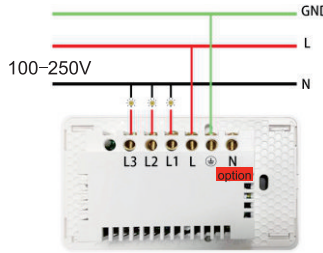
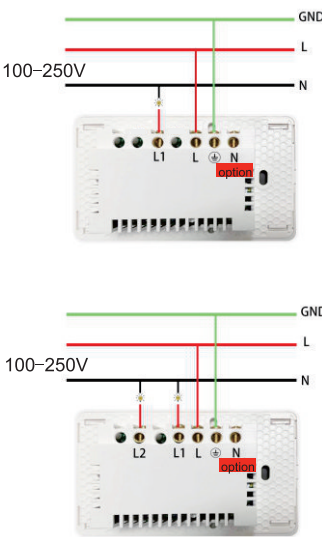
Wi-Fi/Zigbee L+N Wiring Diagram



3 gang wiring



Zigbee without N Wiring Diagram



Installation

- 1.Use a small slotted screwdriver to open the face shell as shown in the picture
- 2.Fix the bottom shell to the wall box with screws, (wall box is NOT included)
- 3.Put the face shell to the bottom shell again.



Note: Do not install with electricity

LED indicator on button

1. When power the switch, LED indicator will turn red.
2. LED indicator will flash when configure network.
3. Turn on the switch, LED indicator will turn white, while off, it will change to red.

Pairing preparation

1. Turn the 2.4G Wi-Fi router on, please note that 5G Wi-Fi router is not available

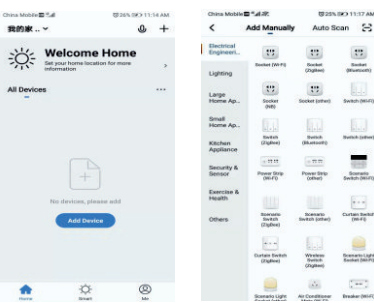
2. Download the smart life app firstly in IOS APP store or Google Play, or scan the QR code as below shown.



IOS & Android System

Pairing operation of WiFi version

1. Long press any button on the switch panel till LED indicator flash quickly
2. Then add device like the follow pictures



Alexa and google Home tutorial



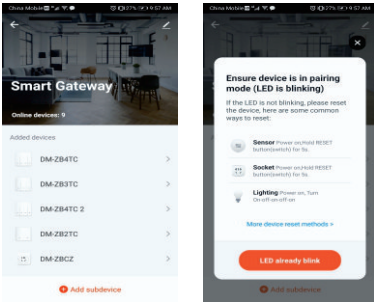
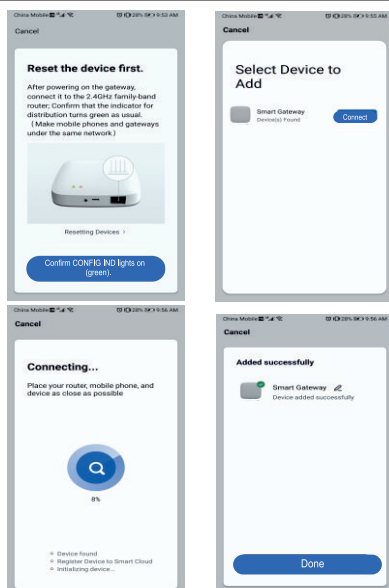
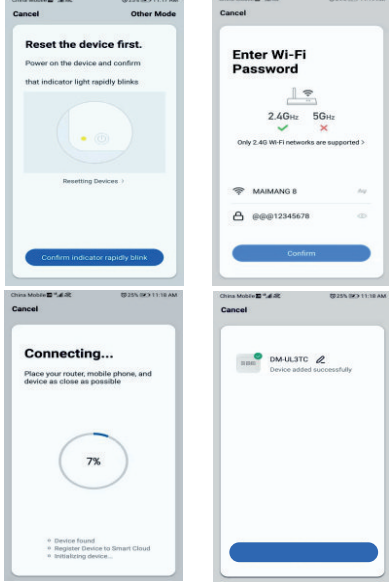
Alexa Tutorial



Google Home Tutorial

Pairing operation of zigbee version

1. If you use zigbee switch, you need to add gateway to the smart life app firstly.
2. Then Long press any button on the switch panel till LED indicator flash quickly.
3. Click "LED already blink" to add switch to app at last.



Note:

This equipment has been tested and found to comply with the limits for a Class B digital device, pursuant to part 15 of the FCC Rules. These limits are designed to provide reasonable protection against harmful interference in a residential installation. This equipment generates, uses and can radiate radio frequency energy and, if not installed and used in accordance with the instructions, may cause harmful interference to radio communications. However, there is no guarantee that interference will not occur in a particular installation. If this equipment does cause harmful interference to radio or television reception, which can be determined by turning the equipment off and on, the user is encouraged to try to correct the interference by one or more of the following measures:

- Reorient or relocate the receiving antenna.
- Increase the separation between the equipment and receiver.
- Connect the equipment into an outlet on a circuit different from that to which the receiver is connected.
- Consult the dealer or an experienced radio/TV technician for help.

This device complies with part 15 of the FCC rules. Operation is subject to the following two conditions:  
(1) This device may not cause harmful interference, and  
(2) This device must accept any interference received, including interference that may cause undesired operation.

Made in China

FCC Statement

This equipment has been tested and found to comply with the limits for a Class B digital device, pursuant to part 15 of the FCC Rules. These limits are designed to provide reasonable protection against harmful interference in a residential installation. This equipment generates, uses and can radiate radio frequency energy and, if not installed and used in accordance with the instructions, may cause harmful interference to radio communications. However, there is no guarantee that interference will not occur in a particular installation. If this equipment does cause harmful interference to radio or television reception, which can be determined by turning the equipment off and on, the user is encouraged to try to correct the interference by one or more of the following measures:

- Reorient or relocate the receiving antenna.
- Increase the separation between the equipment and receiver.
- Connect the equipment into an outlet on a circuit different from that to which the receiver is connected.
- Consult the dealer or an experienced radio/TV technician for help.

Caution: Any changes or modifications to this device not explicitly approved by manufacturer could void your authority to operate this equipment.

This device complies with part 15 of the FCC Rules. Operation is subject to the following two conditions: (1) This device may not cause harmful interference, and (2) this device must accept any interference received, including interference that may cause undesired operation.

RF Exposure Information

This equipment complies with FCC radiation exposure limits set forth for an uncontrolled environment. This equipment should be installed and operated with minimum distance 20cm between the radiator and your body.