



# 深圳市飞敏科技有限公司

ShenZhen City FeiMin Technology CO., LTD.

## 产品承认书

SPECIFICATION FOR APPROVED

客户

CUSTOMER: 深圳市东晟源电子科技有限公司

产品名称

PRODUCTS: RGB 天线

客户料号

PART NO:

产品型号

Spec.: FM-S1662-8 按键 RGB

日期

Data: 2024. 10. 21

供应商 SUPPLIER		
拟制 PREPARED BY	审核 CHECKED BY	批准 APPROVED BY
陈媛	夏兴喜	马冬冬

客户 CUSTOMER		
承认 ACCEPTED BY	审核 CHECKED BY	批准 APPROVED BY

备注：承认盖章后请回复一份承认书（或复印件）给我司，其余由贵公司存档

REMARK: Please send us one (or copy) of this approval with stamp after accepting, other copies filed by the customer.

地址：深圳市宝安区西乡街道固戍社区恒南一路 C 栋厂房 303 室

ADD: Room 303, Building C, Hengnan one Road, Gushu community, Xixiang Street, Bao' an District, Shenzhen City

电话 Tel: 0755-23035723

传真 Fax: 0755-23036702

邮箱 E-mail: ant001@fmant.cn

网址 HTTP: [www.fmant.cn](http://www.fmant.cn)

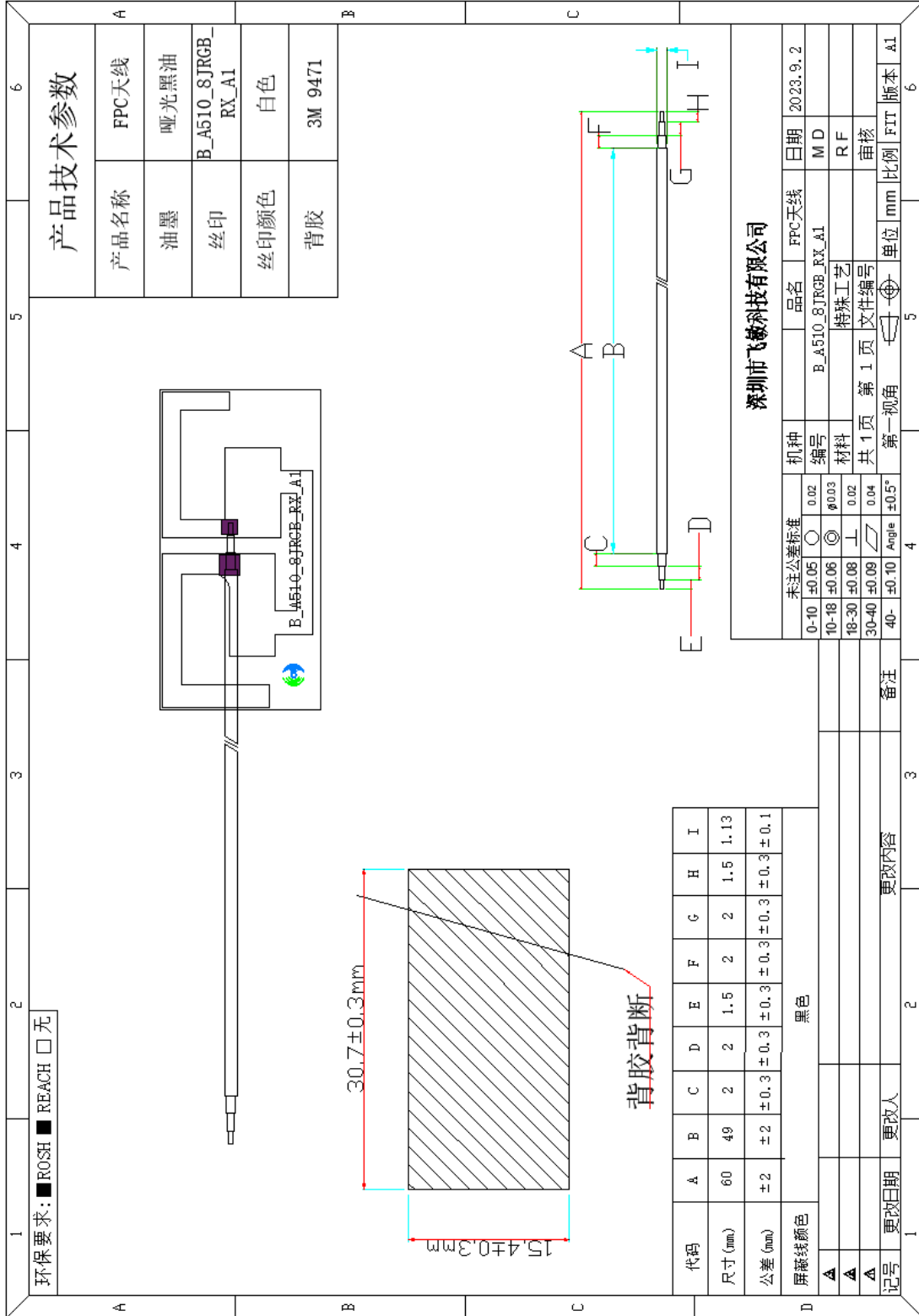
## 目录

产品承认书.....	1
1. 项目信息 Project Information.....	3
1.1. 外观尺寸 Appearance and Dimensions .....	3
2. 电气性能 Electrical Characteristics .....	4
2.1. 测试环境条件 Test Environment Conditions.....	4
2.2. 测试方法 Measurement method .....	4
2.2.1. 天线电压驻波比 Antenna VSWR.....	4
2.2.2. 天线回波损耗 Antenna Return loss.....	5
2.3. 天线无源测试数据 Antenna passive test data.....	5
2.3.1. 测试系统 Test system.....	5
2.3.2 天线效率及增益 Antenna efficiency and gain.....	6

# ANTENNA SPECIFICATION

## 1. 项目信息 Project Information

### 1.1. 外观尺寸 Appearance and Dimensions



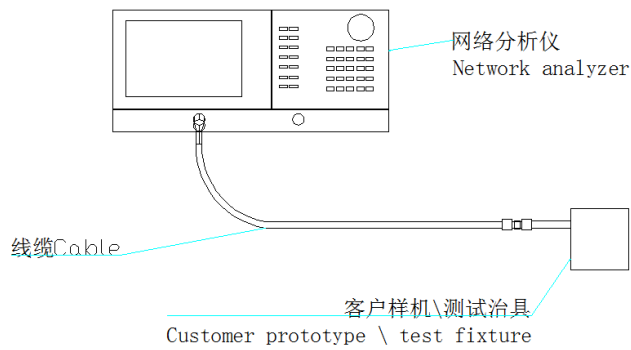
# ANTENNA SPECIFICATION

## 2. 电气性能 Electrical Characteristics

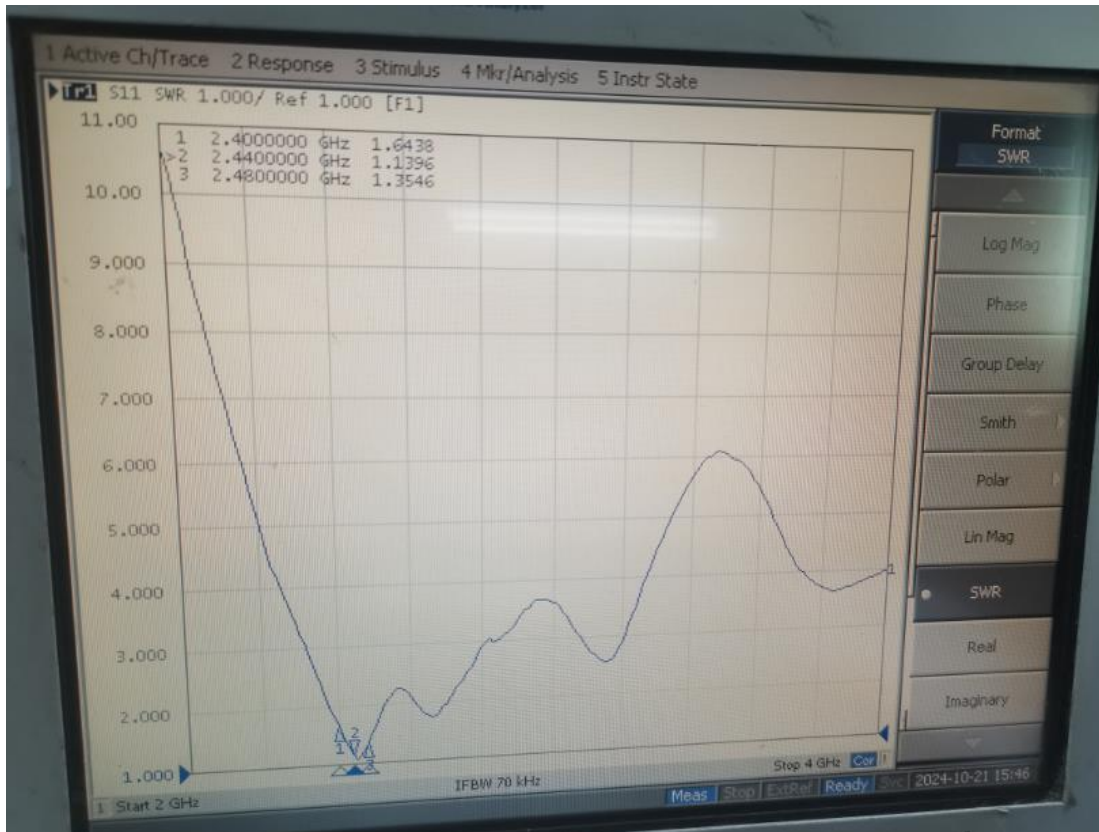
### 2.1. 测试环境条件 Test Environment Conditions

温度 Temperature	Ordinary Temperature (5 to 35°C)
湿度 Humidity	Ordinary Humidity (25 to 85% RH)

### 2.2. 测试方法 Measurement method

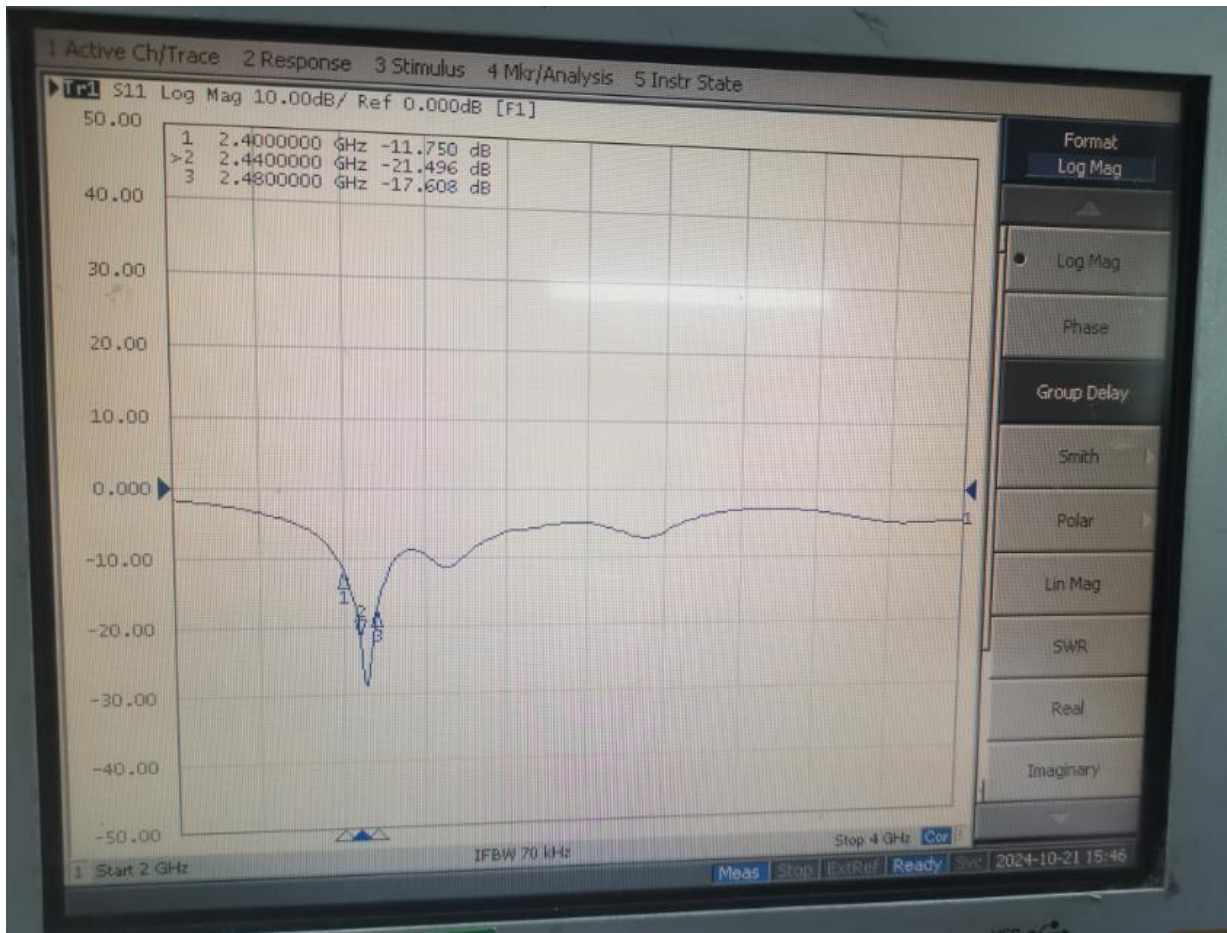


#### 2.2.1. 天线电压驻波比 Antenna VSWR



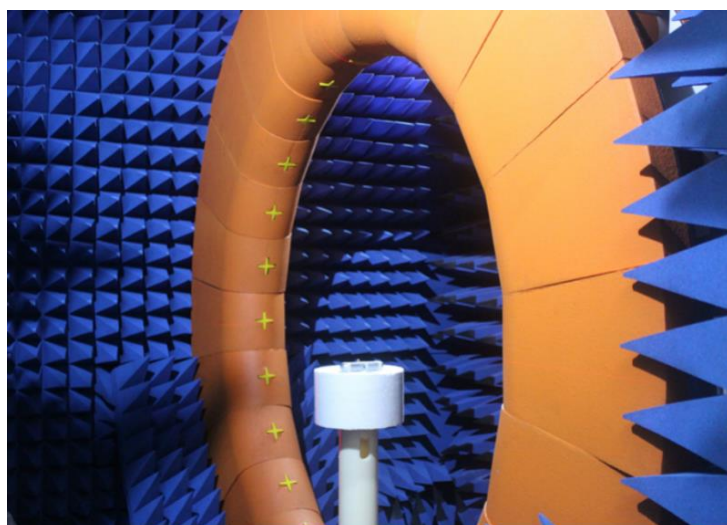
# ANTENNA SPECIFICATION

## 2.2.2. 天线回波损耗 Antenna Return loss



## 2.3. 天线无源测试数据 Antenna passive test data

### 2.3.1. 测试系统 Test system



深圳市飞敏科技有限公司 (24 探头 OTA 微波暗室)

## ANTENNA SPECIFICATION

---

### 2.3.2 天线效率及增益 Antenna efficiency and gain

Freq (MHz)	Efficiency(%)	Gain(dBi)
2400	38.51	2.32
2410	39.11	2.29
2420	40.61	2.54
2430	42.44	2.68
2440	45.14	3.05
2450	44.82	2.78
2460	44.52	2.7
2470	42.74	2.51
2480	42.59	2.58
2490	42.55	2.53
2500	43.03	2.79



