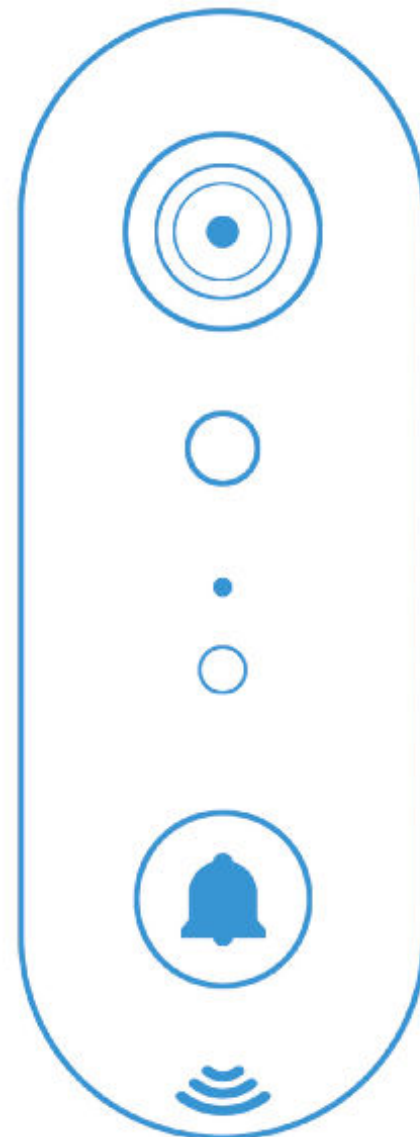


Security Doorbell

Human Detection, Two-way Audio

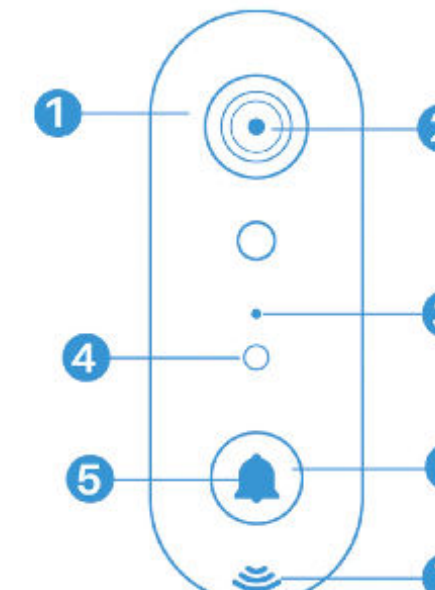


User Manual 1.4

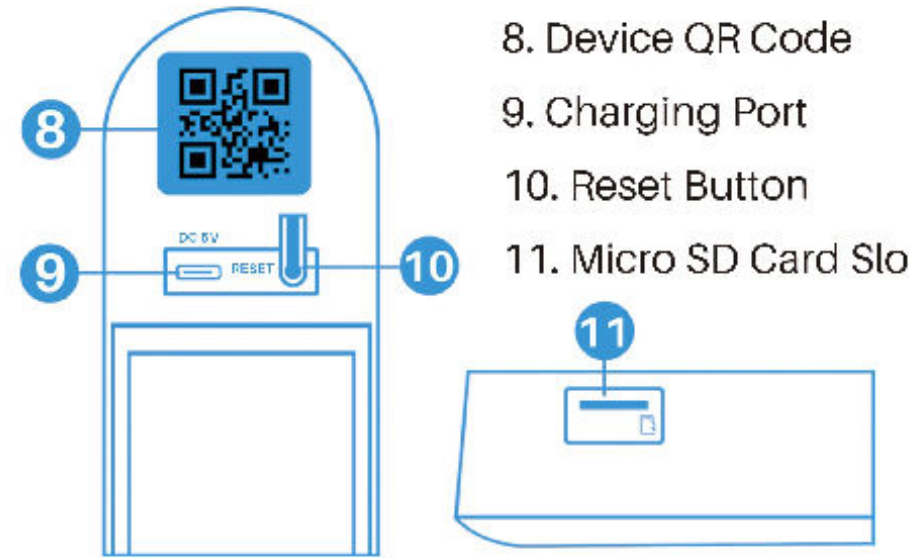
Contents

Appearance Introduction.....	1
Device activation.....	2
FAQ.....	3
Set up your Video Doorbell.....	4
Common Feature.....	7
1.Replacement of video doorbell networks.....	7
2.Video Doorbell Installation Micro SD card.....	7
3.Multi-user Sharing.....	8
4.Customer service.....	8
5.View the video footage.....	9
6.Alarm message.....	10
Set up your Wireless Chime.....	11
More Feature.....	13
1.Audio settings.....	14
2.Video recording settings.....	14
3.Picture settings.....	15
4.Night vision mode.....	16
5.Memory card.....	16
6.Notification settings.....	17
7.Call settings.....	17
8.Detection settings.....	18
9.Other settings.....	18

Appearance Introduction



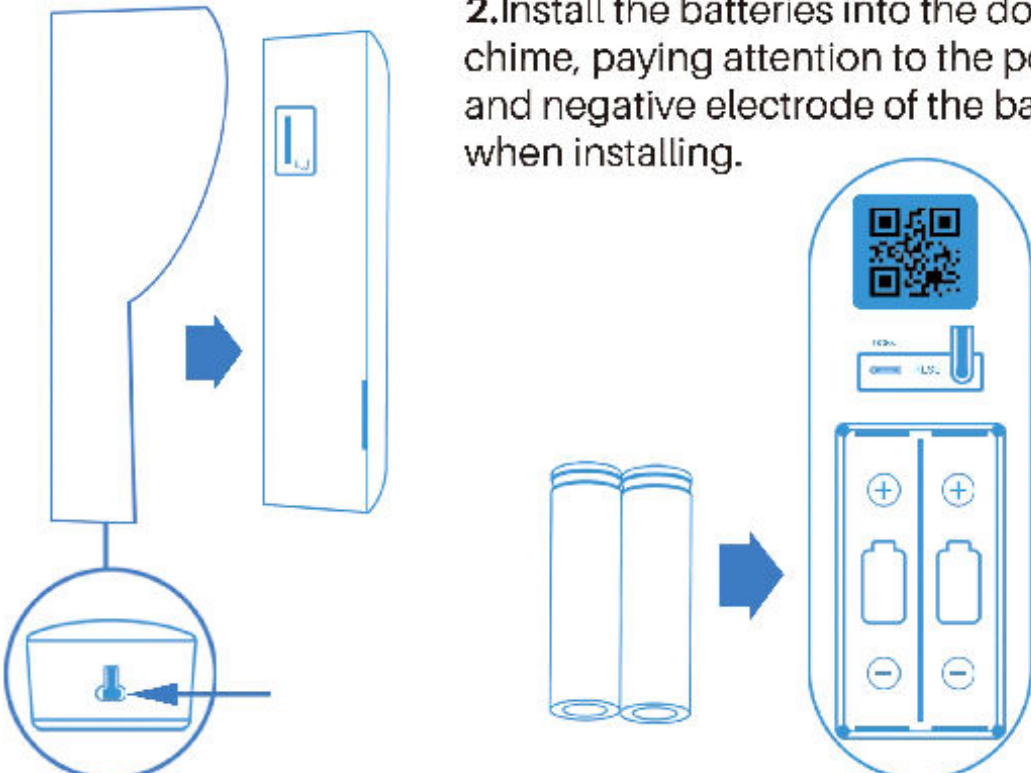
1. Hidden Infrared Lights
2. Wide-angle Lens
3. Microphone
4. Light Sensor
5. LED Indicator
6. Doorbell Button
7. Speaker



1

Device activation

Connecting the power supply
Install the battery for the device, then wait for the device to start up and send voice prompts.



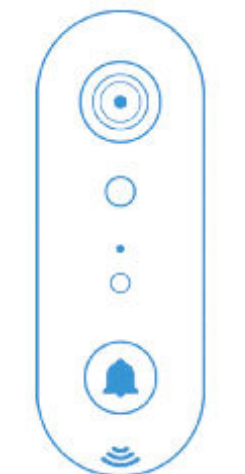
1. Use the thimble to hold down the button to unlock and take out the back cover bracket of the doorbell.

WARNING: Lots of events
If your device is capturing an excessive number of events every day, you might need to recharge your battery sooner. Plus, the battery is also drained each time you use the live view to look or speak through your doorbell. To prevent excessive events, you can adjust your motion settings to a lower sensitivity.

2

FAQ

- 1.The security doorbell only supports 2.4Ghz WIFI, please make sure the connected WIFI is 2.4Ghz WIFI before use.
2. The security doorbell supports up to 128GB TF card (Micro SD card). Please disconnect the camera before installing the TF card.



Blue Light Always On
The device is in working mode.

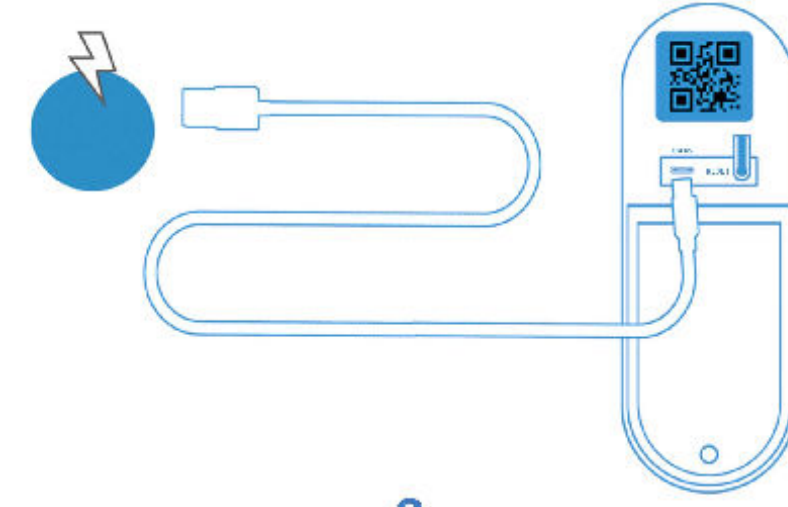


Red Light Always On
The device is charging.

Flashing RED
Device is connecting to WIFI.

Device Charging

Fully charge batteries by connecting your device to a 5V1A or 5V2A USB charger using a USB Type-c cable. It takes about 8 hours for batteries to fully charge.



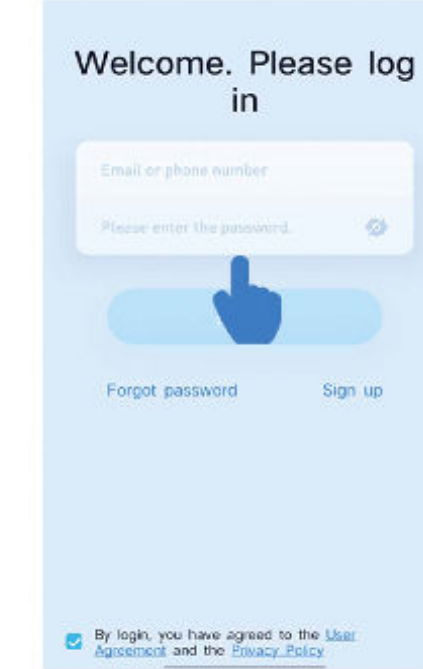
3

Set up your Video Doorbell

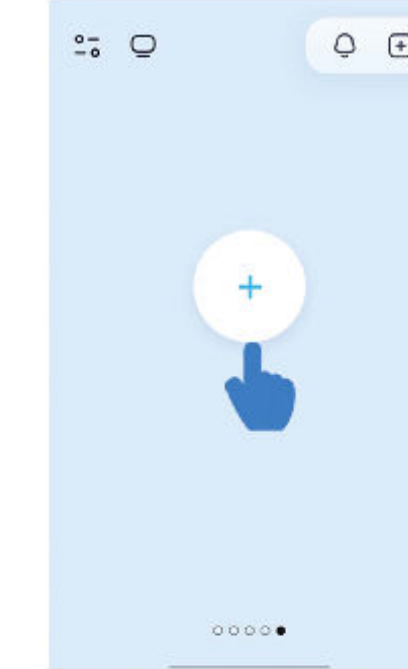
- 1.**Download App**
Download the iCam365 app via the App Store and Google Play or simply scan the QR code below to download the app.



1. Please login or register an account first.



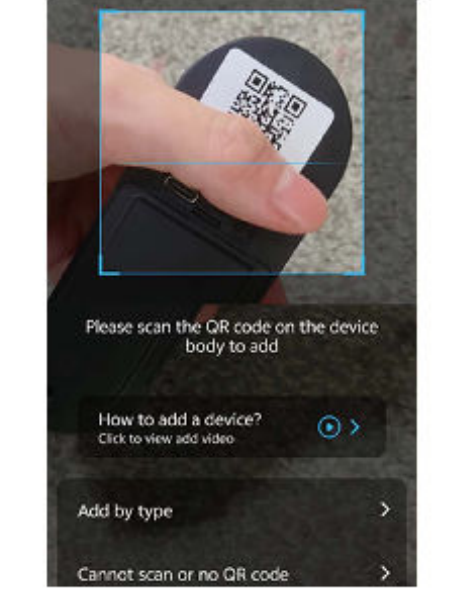
2. Click "+" to add devices.



4

Set up your Video Doorbell

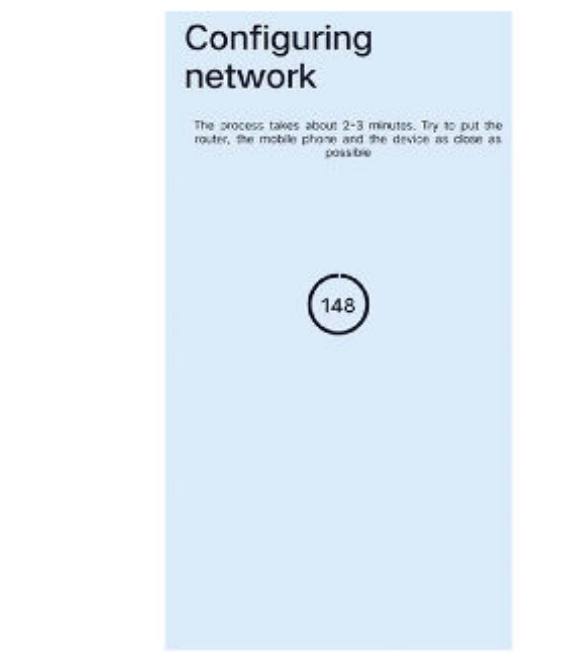
3. Scan the QR code on your device. (Please open the back cover bracket of the doorbell to find the QR code)



5. Scan the QR code generated by the "iCam 365" App with your security doorbell.(Scan the QR code with the doorbell distance 10-30 cm)



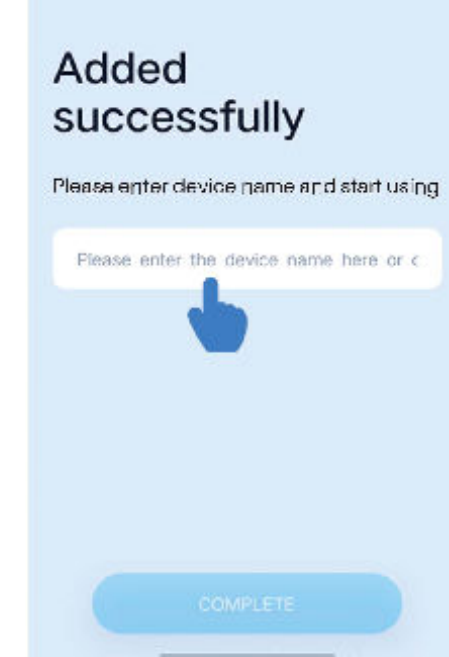
6. Wait for the device to connect to the network.



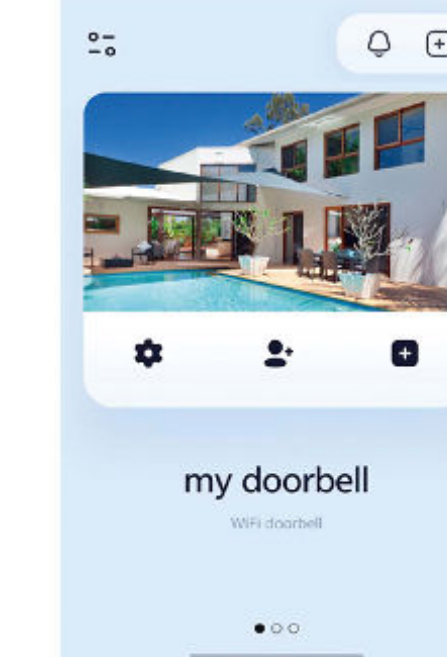
5

Set up your Video Doorbell

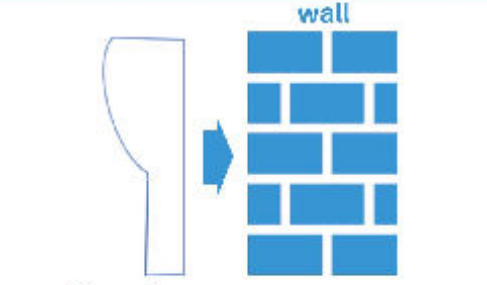
7. Name your device.



8. Add successfully.



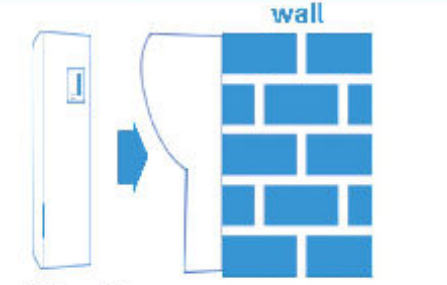
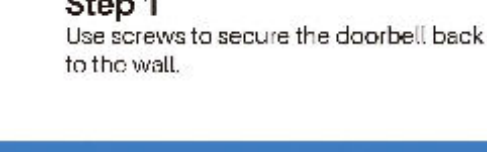
Install your security doorbell



- Step 1 Mount the doorbell back cover bracket to the wall using the adhesive backing for the doorbell back cover bracket.



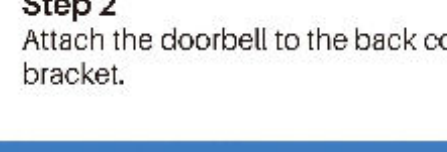
- Step 1 Use screws to secure the doorbell back cover to the wall.



- Step 2 Attach the doorbell to the back cover bracket.

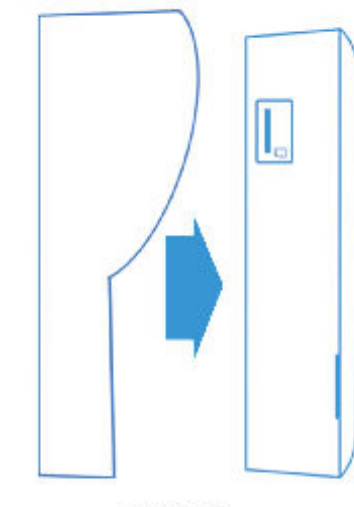


- Step 2 Attach the doorbell to the back cover bracket.

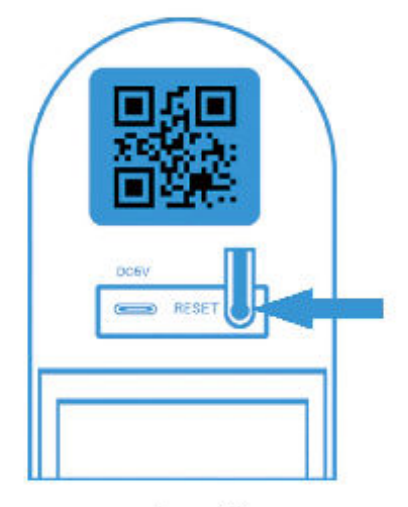


Common Feature

- 1.**Replacement of video doorbell networks**
If you need to change the WiFi of the doorbell, please restore the doorbell to factory settings first.Remove the back cover of the doorbell, find the reset button of the doorbell, press and hold it for 8 seconds and wait for the voice prompt of the doorbell to restore the factory settings.



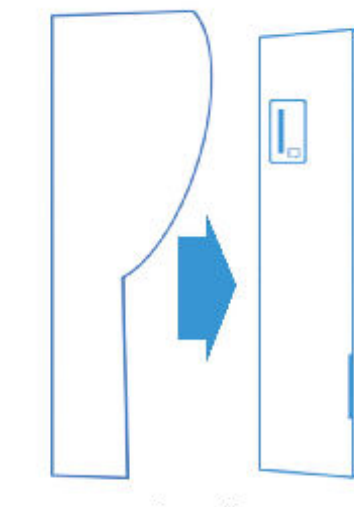
step 1



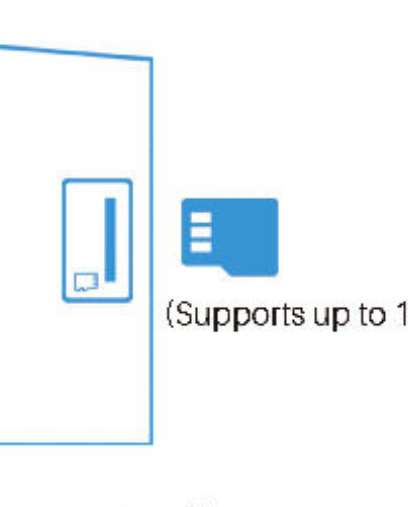
step 2

2.Video Doorbell Installation Micro SD card

Note: Disconnect the video doorbell from the power supply before installation.



step 1



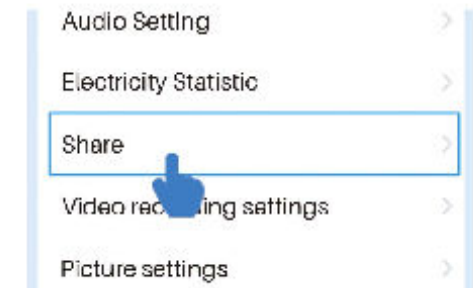
step 2

(Supports up to 128GB)

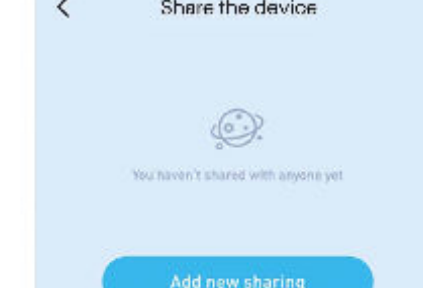
7

Common Feature

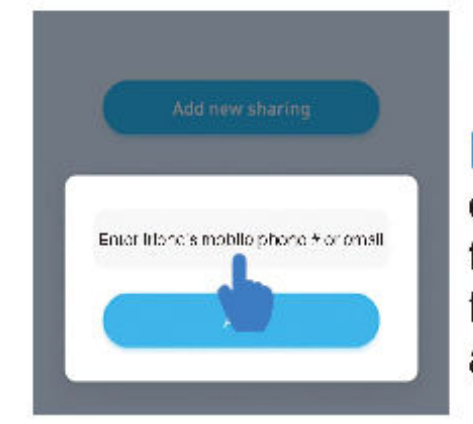
3.Multi-user Sharing



Step 1

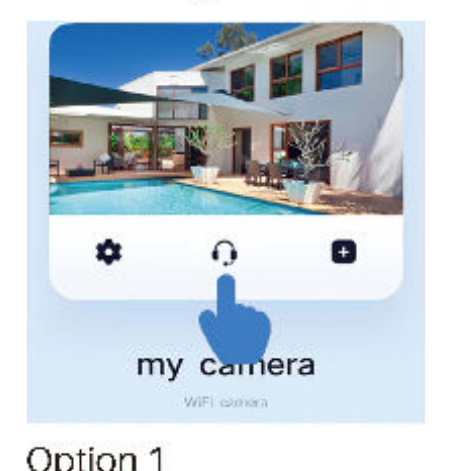


Step 2

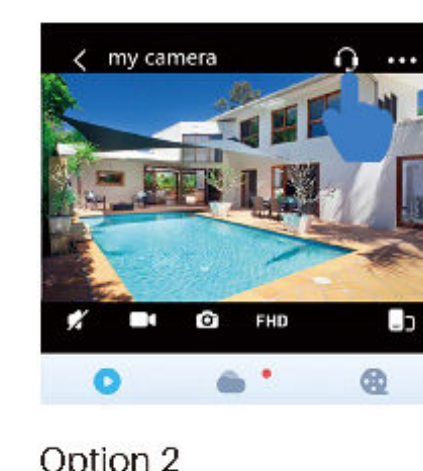


Step 3

- 4.If you encounter any problems, please click (📞) to contact our customer service



Option 1

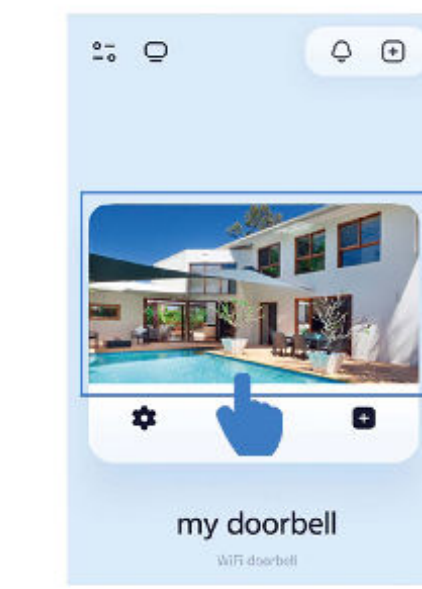


Option 2

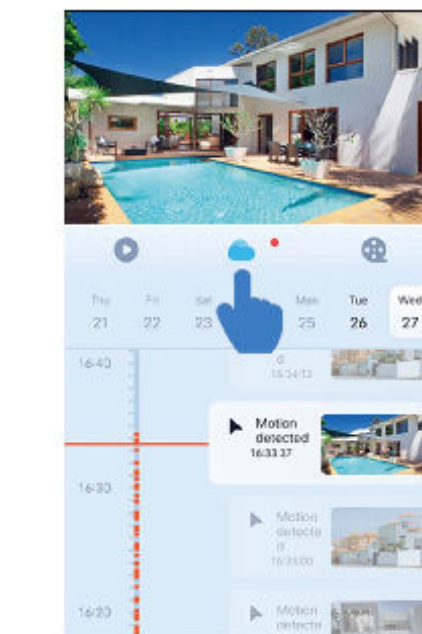
8

Common Feature

5.View the video footage



Cloud Storage

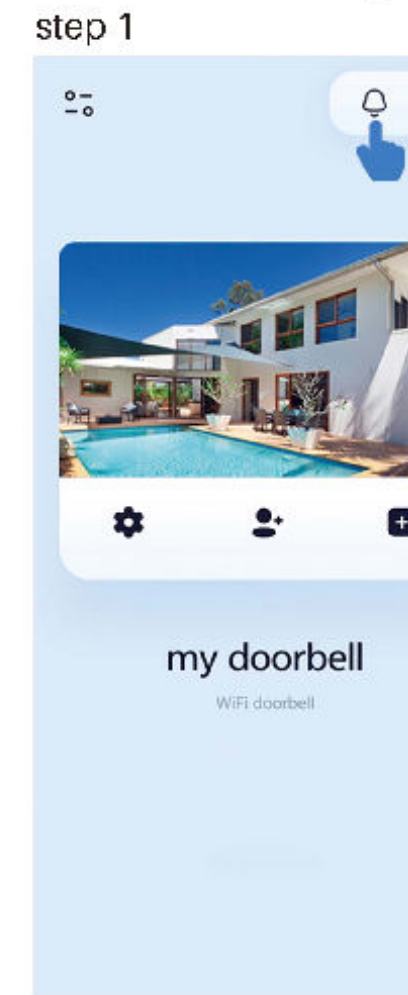


★ The free cloud storage for the video doorbell does not need to be manually activated,when the doorbell set up finished,the cloud storage will be automatically activated. (Video doorbells come with 12 months of 2-day loop free cloud storage)

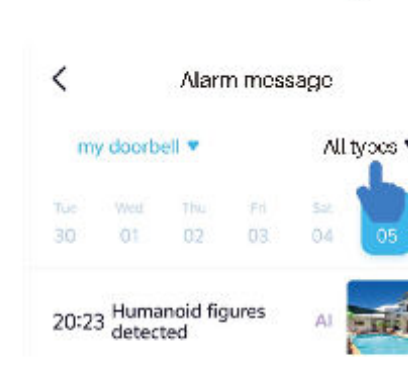
9

Common Feature

6. Alarm message



6.1. More settings



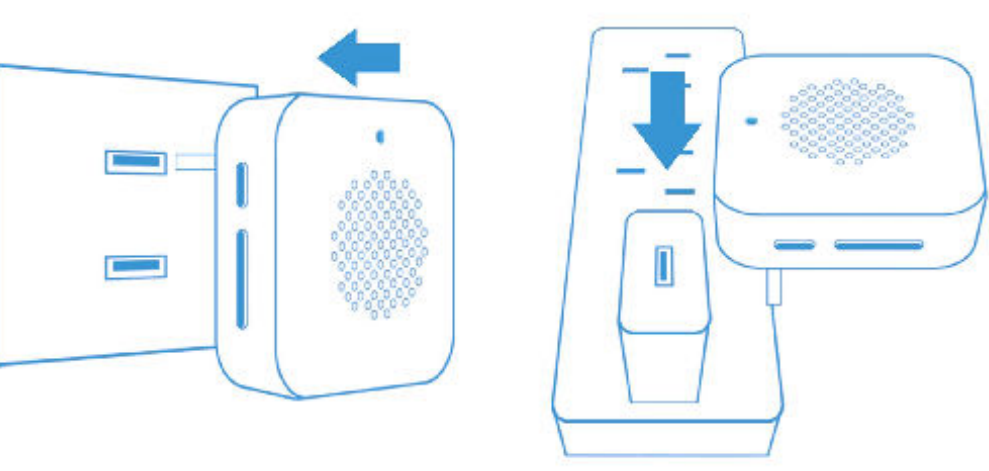
10

Set up your Wireless Chime (Optional)

Connect the video doorbell to the doorbell chime, and get instant alert in your home when someone rings the doorbell. The chime plugs into any wall outlet, you can place it anywhere in the home.

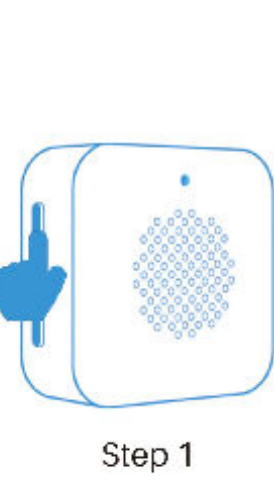
Step 1

Before the setup process, be sure your video doorbell has connected to your phone. Then plug your chime in USB port.

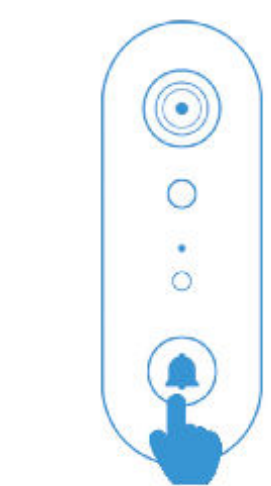


Step 2

Press and hold the chime matching button for 8 seconds, when you hear a "ding" sound from the chime to enter the pairing mode, then press the Doorbell button of the video doorbell to match successfully.



Step 1

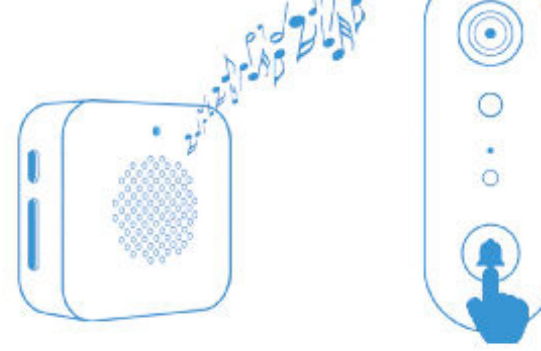


Step 2

11

Set up your Wireless Chime (Optional)

Step 3
Press the Doorbell button again to verify the chime and video doorbell work properly.



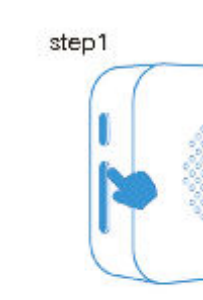
Features

1. **Volume Adjustment/Match Button**
Click the button to adjust the volume, there are three levels of volume adjustable low, medium and high.
Long press the button to enter the matching mode.
2. **Tone Adjustment**
Tap the button to adjust the cues, there are 38 cues adjustable in total.

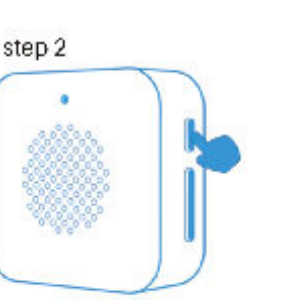
★ The chime can be paired with up to 4 of the video doorbells.

Tone Adjustment

1. Tap the Adjust button to adjust the cues and select your favorite cues.
2. Press and hold the Ringtone Matching button for 8 seconds, when you hear a "ding" sound from the ringtone, it enters the pairing mode, and then press the Doorbell button of the video doorbell to switch successfully.



step1

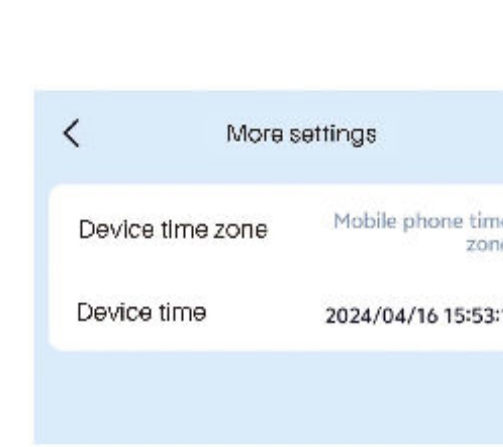
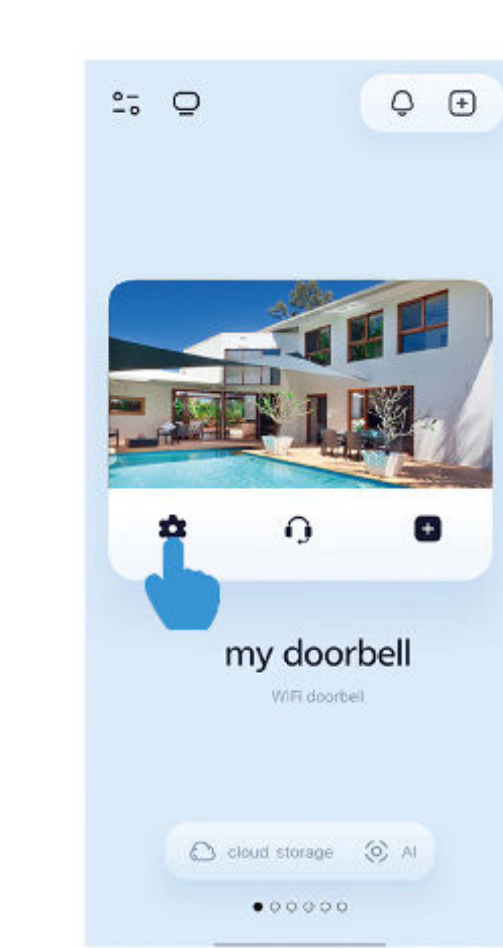


step 2

12

More Feature

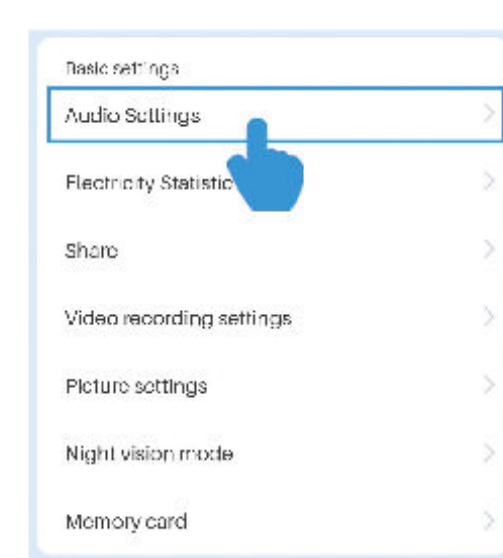
Click (⚙️) to go to more setting



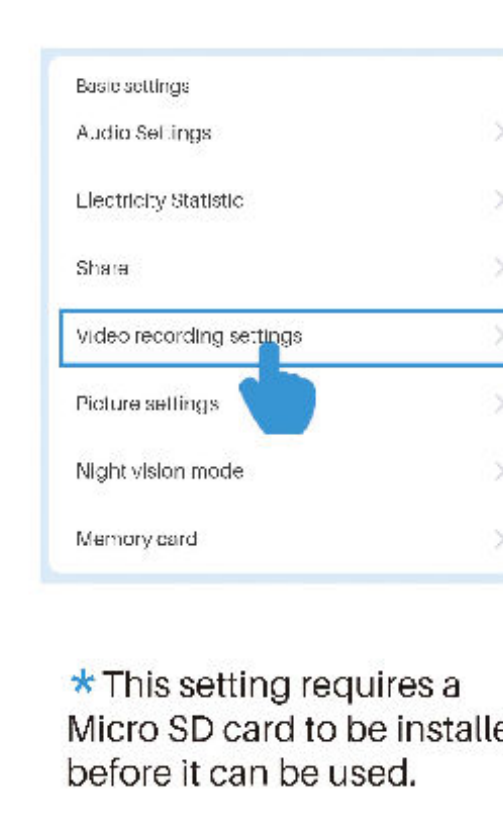
13

More Feature

1.Audio settings



2.Video recording settings

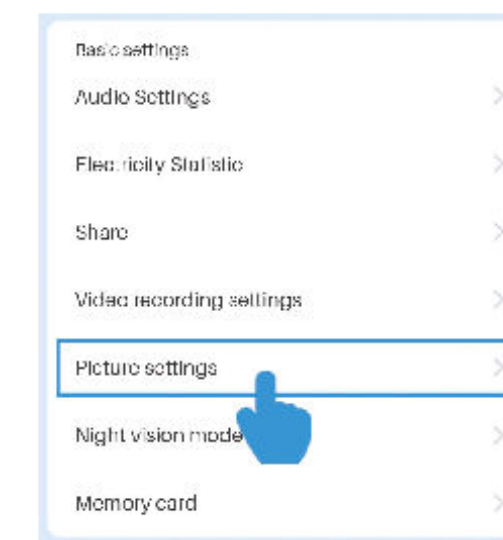


★ This setting requires a Micro SD card to be installed before it can be used.

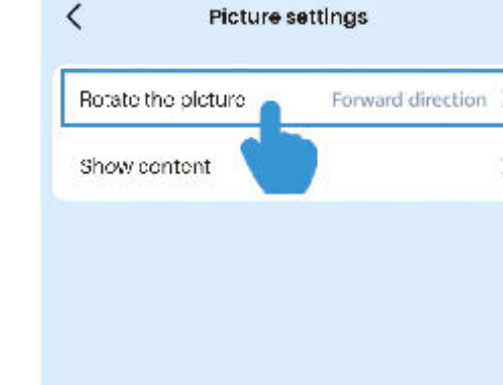
14

More Feature

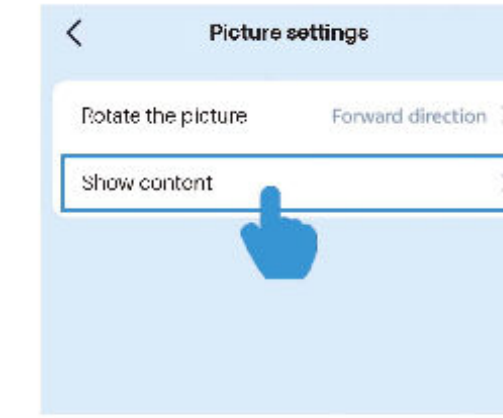
3.Picture settings



3.1 Rotate the picture



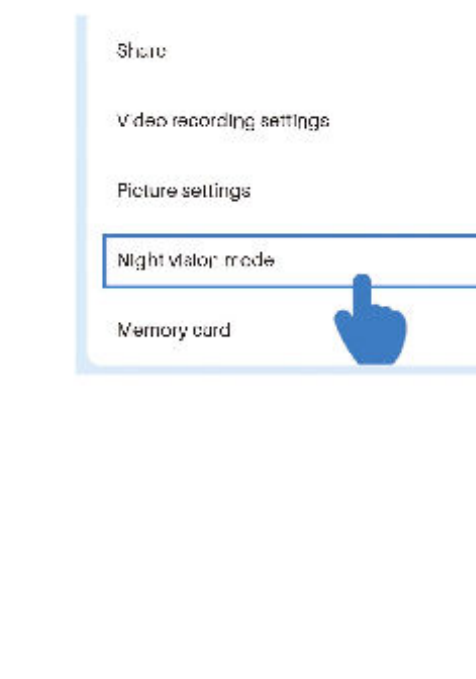
3.2 Show content



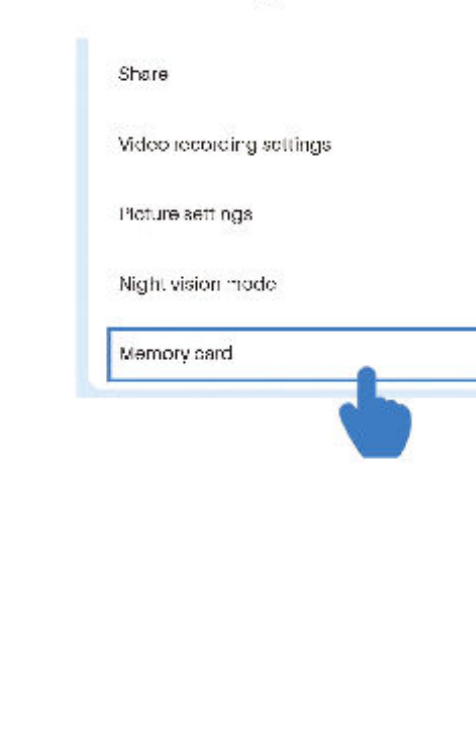
15

More Feature

4.Night vision mode



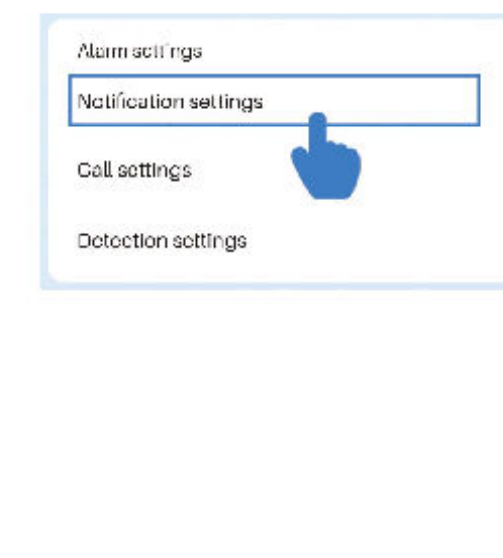
5.Memory card



16

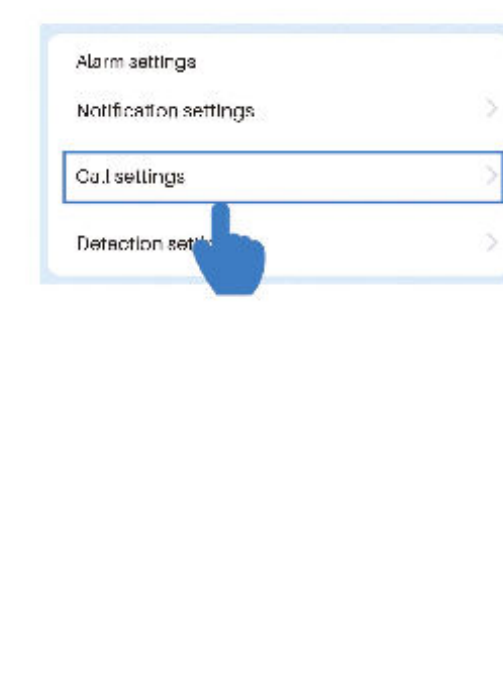
More Feature

6.Notification settings



★ If you still don't receive message notification after enabling message notification, please check whether you have enabled the message notification privilege of "iCam 365" APP in your phone settings.

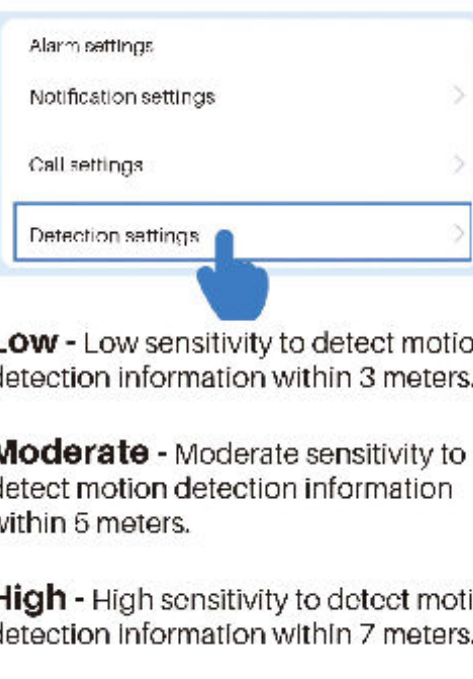
7.Call settings



17

More Feature

8.Detection settings



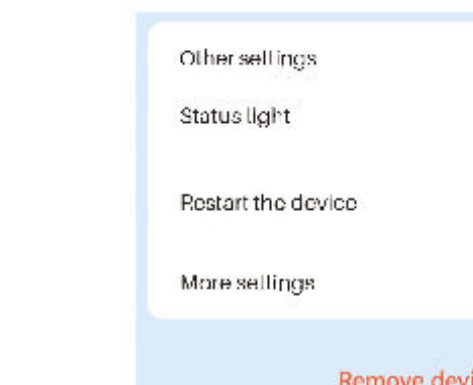
Low - Low sensitivity to detect motion detection information within 3 meters.

Moderate - Moderate sensitivity to detect motion detection information within 5 meters.

High - High sensitivity to detect motion detection information within 7 meters.

Humanoird filtering

9.Other settings



- 1.Turns the video doorbell status light on or off.
2. Reboot the video doorbell.
3. Setting the time of the device.
4. Remove device.

18

FCC Warning:

This equipment has been tested and found to comply with the limits for a Class B digital device, pursuant to part 15 of the FCC Rules. These limits are designed to provide reasonable protection against harmful interference in a residential installation. This equipment generates, uses and can radiate radio frequency energy and, if not installed and used in accordance with the instructions, may cause harmful interference to radio communications. However, there is no guarantee that interference will not occur in a particular installation. If this equipment does cause harmful interference to radio or television reception, which can be determined by turning the equipment off and on, the user is encouraged to try to correct the interference by one or more of the following measures:

- Reorient or relocate the receiving antenna.
- Increase the separation between the equipment and receiver.
- Connect the equipment into an outlet on a circuit different from that to which the receiver is connected.
- Consult the dealer or an experienced radio/TV technician for help.

Caution: Any changes or modifications to this device not explicitly approved by manufacturer could void your authority to operate this equipment.

This device complies with part 15 of the FCC Rules. Operation is subject to the following two conditions:

(1) This device may not cause harmful interference, and (2) this device must accept any interference received, including interference that may cause undesired operation.

This equipment complies with FCC radiation exposure limits set forth for an uncontrolled environment. This equipment should be installed and operated with minimum distance 20cm between the radiator and your body.