



Conducted Emission Method

Test Result

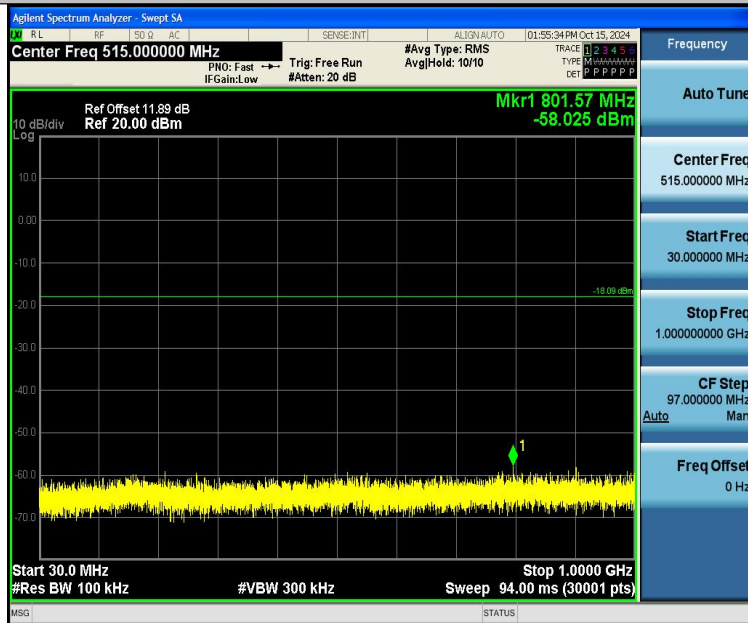
TestMode	Antenna	Frequency[MHz]	FreqRange [MHz]	RefLevel [dBm]	Result [dBm]	Limit [dBm]	Verdict
DH5	Ant1	2402	0~Reference	1.91	1.91	---	PASS
DH5	Ant1	2402	30~1000	1.91	-58.03	≤-18.09	PASS
DH5	Ant1	2402	1000~26500	1.91	-38	≤-18.09	PASS
DH5	Ant1	2441	0~Reference	2.48	2.48	---	PASS
DH5	Ant1	2441	30~1000	2.48	-57.65	≤-17.52	PASS
DH5	Ant1	2441	1000~26500	2.48	-36.46	≤-17.52	PASS
DH5	Ant1	2480	0~Reference	2.79	2.79	---	PASS
DH5	Ant1	2480	30~1000	2.79	-57.47	≤-17.21	PASS
DH5	Ant1	2480	1000~26500	2.79	-35.98	≤-17.21	PASS
2DH5	Ant1	2402	0~Reference	-0.66	-0.66	---	PASS
2DH5	Ant1	2402	30~1000	-0.66	-57.76	≤-20.66	PASS
2DH5	Ant1	2402	1000~26500	-0.66	-38.06	≤-20.66	PASS
2DH5	Ant1	2441	0~Reference	2.15	2.15	---	PASS
2DH5	Ant1	2441	30~1000	2.15	-57.16	≤-17.85	PASS
2DH5	Ant1	2441	1000~26500	2.15	-36.06	≤-17.85	PASS
2DH5	Ant1	2480	0~Reference	3.11	3.11	---	PASS
2DH5	Ant1	2480	30~1000	3.11	-57.32	≤-16.89	PASS
2DH5	Ant1	2480	1000~26500	3.11	-35.99	≤-16.89	PASS
3DH5	Ant1	2402	30~1000	1.36	-57.64	≤-18.64	PASS
3DH5	Ant1	2402	0~Reference	1.36	1.36	---	PASS
3DH5	Ant1	2402	1000~26500	1.36	-37.87	≤-18.64	PASS
3DH5	Ant1	2441	0~Reference	2.77	2.77	---	PASS
3DH5	Ant1	2441	30~1000	2.77	-56.32	≤-17.23	PASS
3DH5	Ant1	2441	1000~26500	2.77	-36.29	≤-17.23	PASS
3DH5	Ant1	2480	0~Reference	2.98	2.98	---	PASS
3DH5	Ant1	2480	30~1000	2.98	-57.53	≤-17.02	PASS
3DH5	Ant1	2480	1000~26500	2.98	-36.03	≤-17.02	PASS



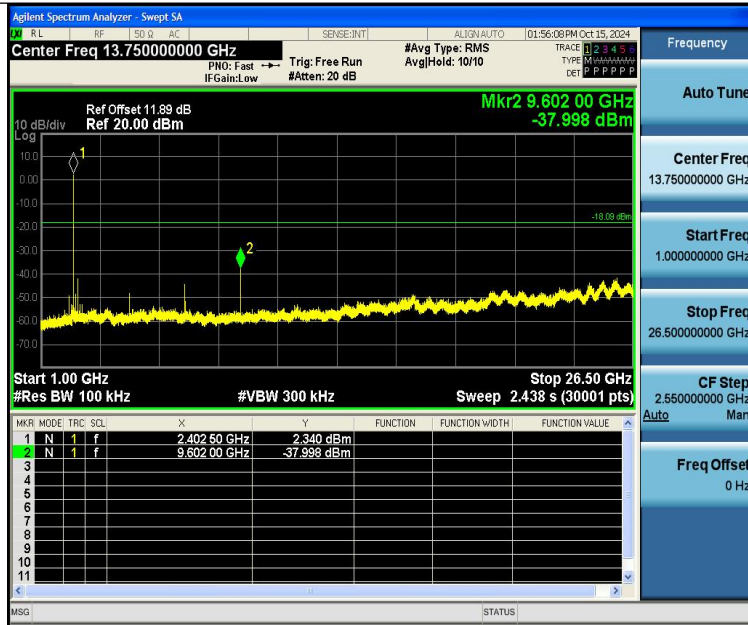
Test Graphs:



DH5-Ant1-2402-0~Reference-PASS



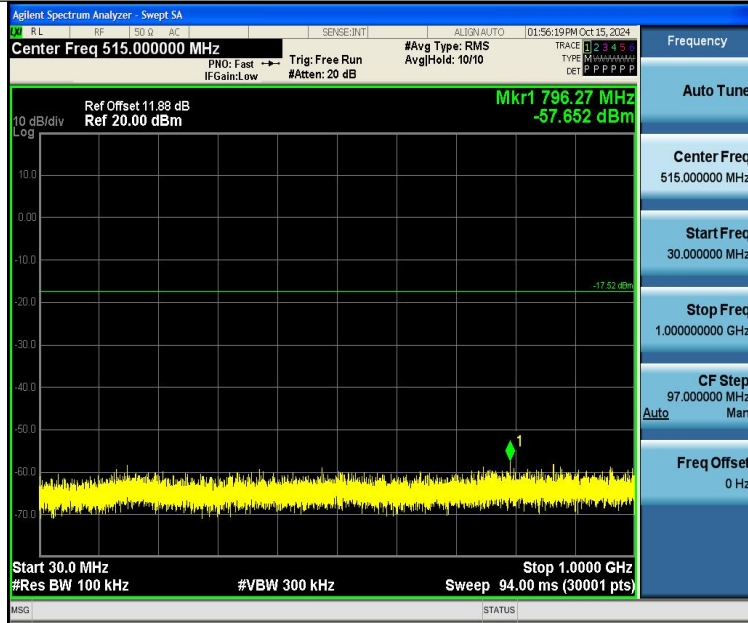
DH5-Ant1-2402-30~1000-PASS



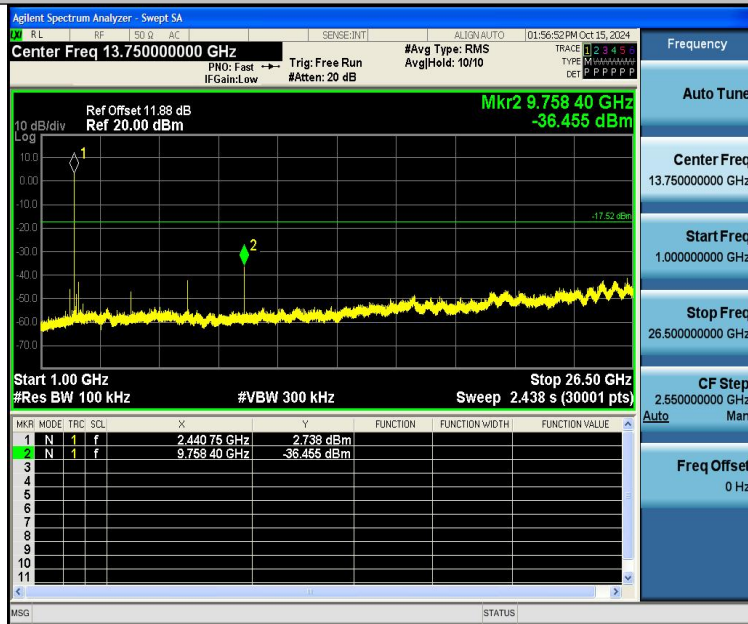
DH5-Ant1-2402-1000~26500-PASS



DH5-Ant1-2441-0~Reference-PASS



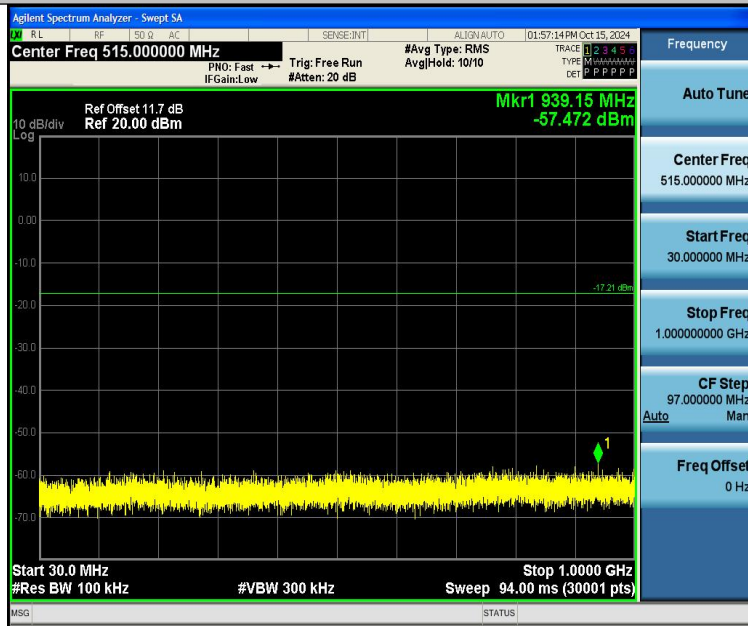
DH5-Ant1-2441-30~1000-PASS



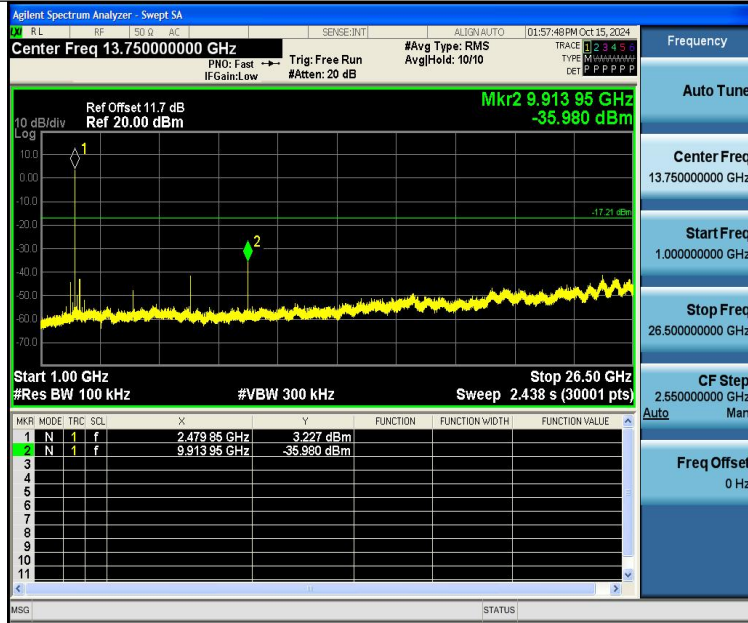
DH5-Ant1-2441-1000~26500-PASS



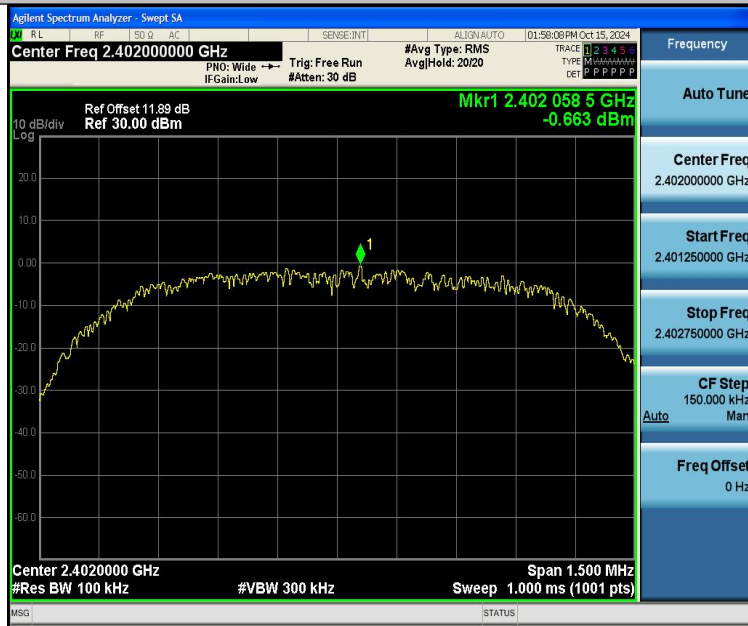
DH5-Ant1-2480-0~Reference-PASS



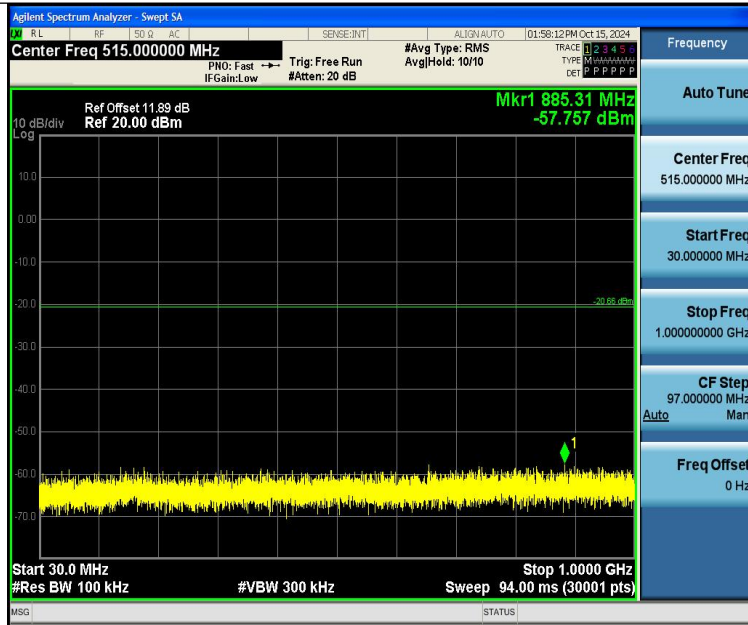
DH5-Ant1-2480-30~1000-PASS



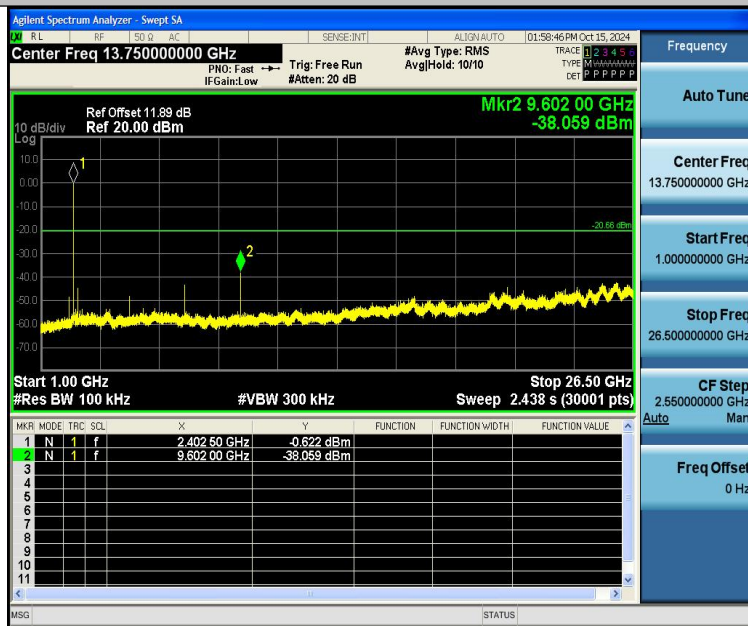
DH5-Ant1-2480-1000~26500-PASS



2DH5-Ant1-2402-0~Reference-PASS



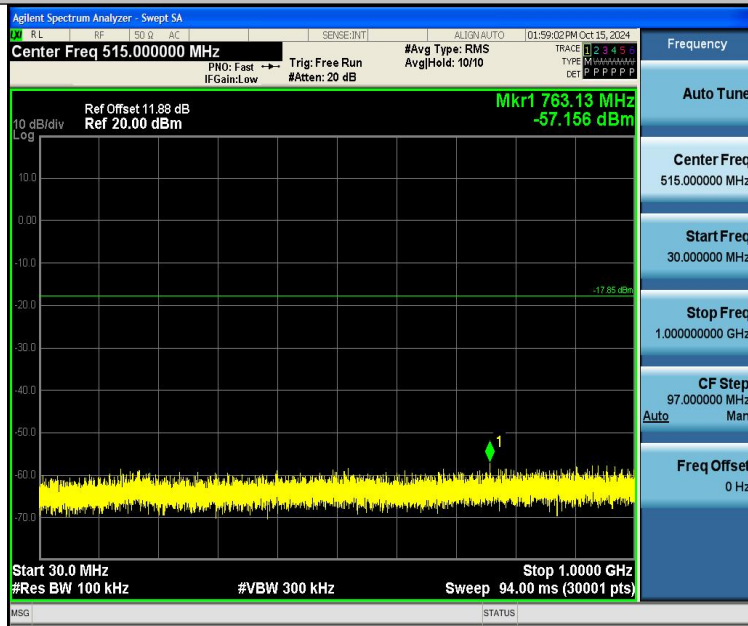
2DH5-Ant1-2402-30~1000-PASS



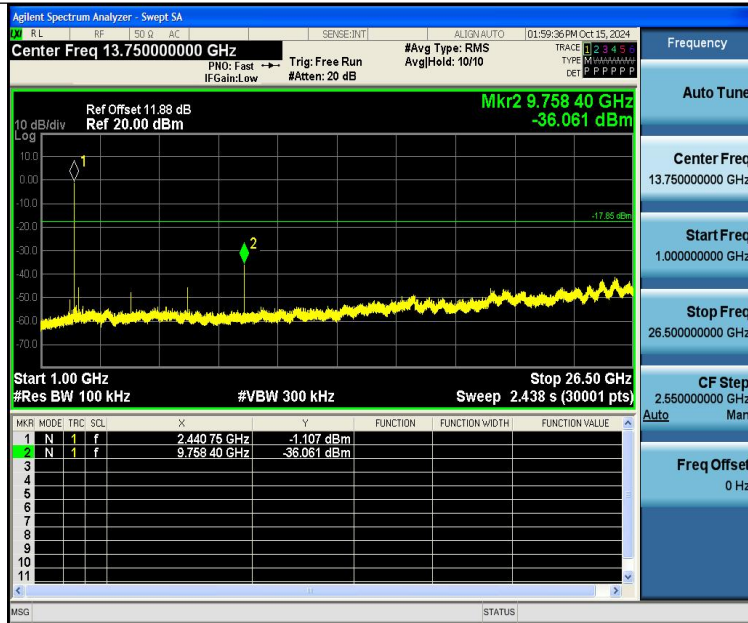
2DH5-Ant1-2402-1000~26500-PASS



2DH5-Ant1-2441-0~Reference-PASS



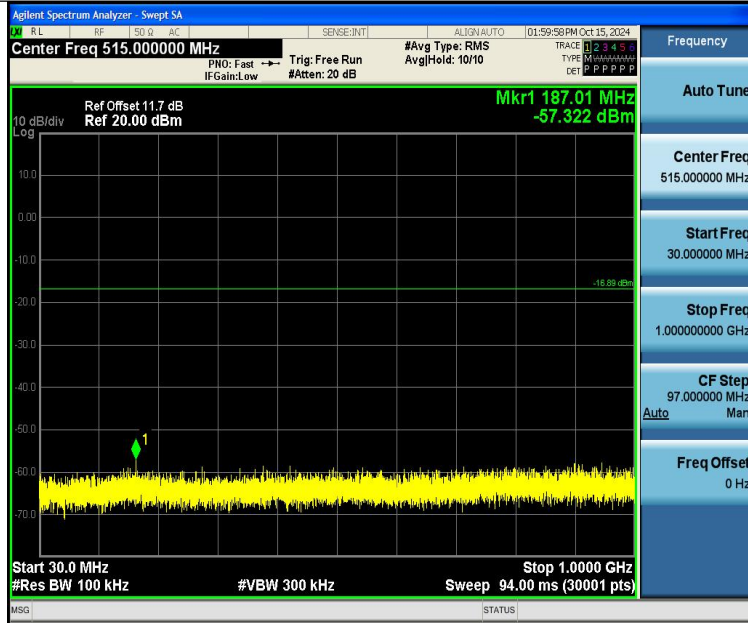
2DH5-Ant1-2441-30~1000-PASS



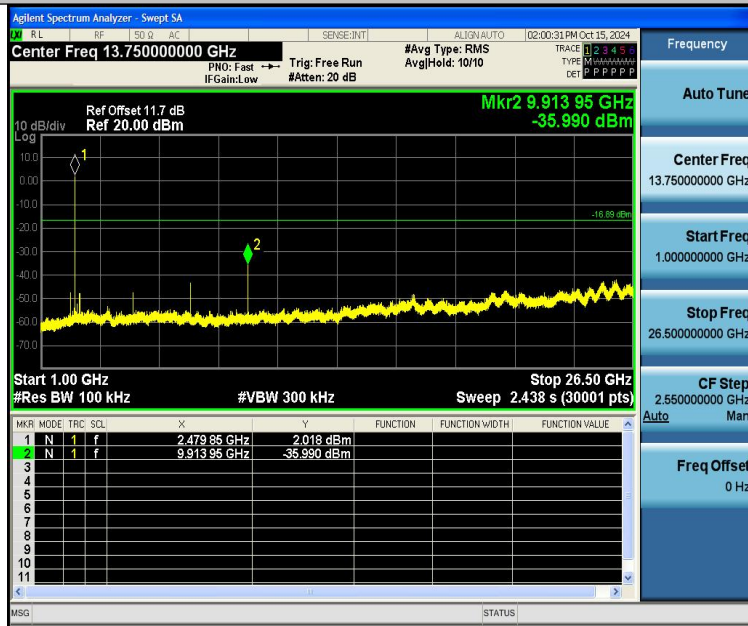
2DH5-Ant1-2441-1000~26500-PASS



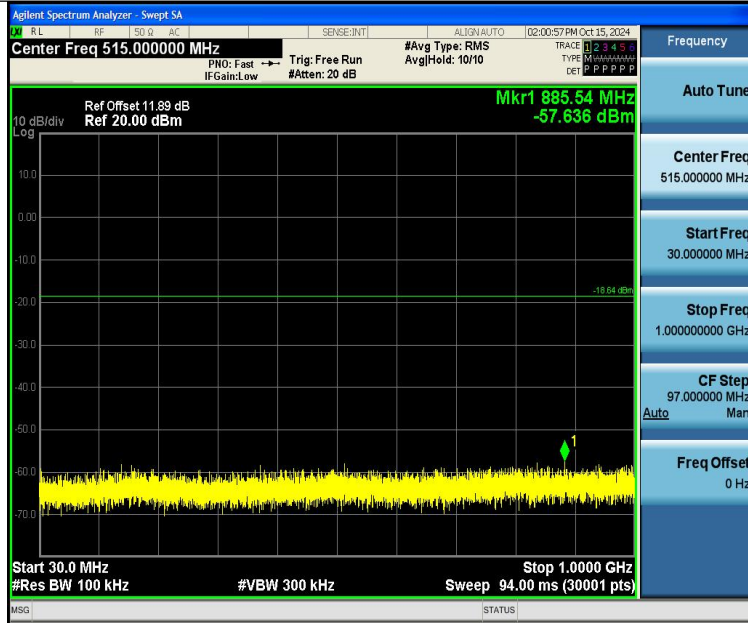
2DH5-Ant1-2480-0~Reference-PASS



2DH5-Ant1-2480-30~1000-PASS



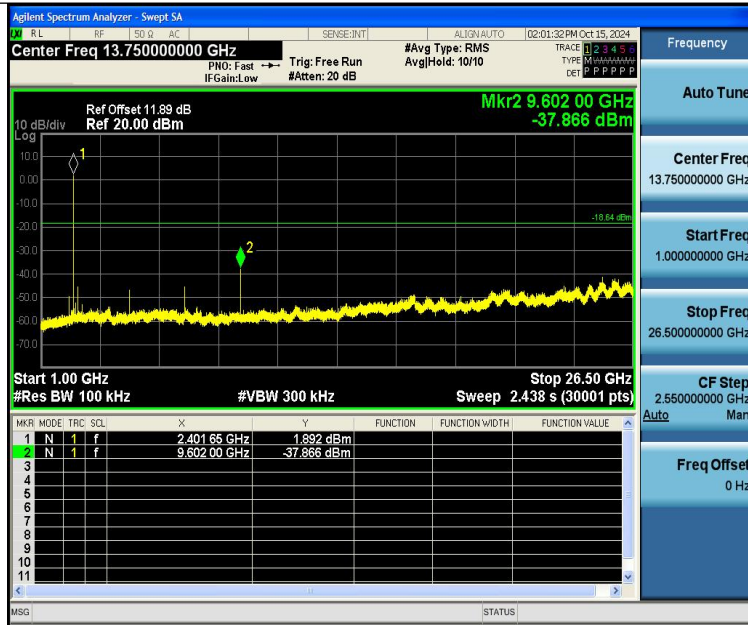
2DH5-Ant1-2480-1000~26500-PASS



3DH5-Ant1-2402-30~1000-PASS



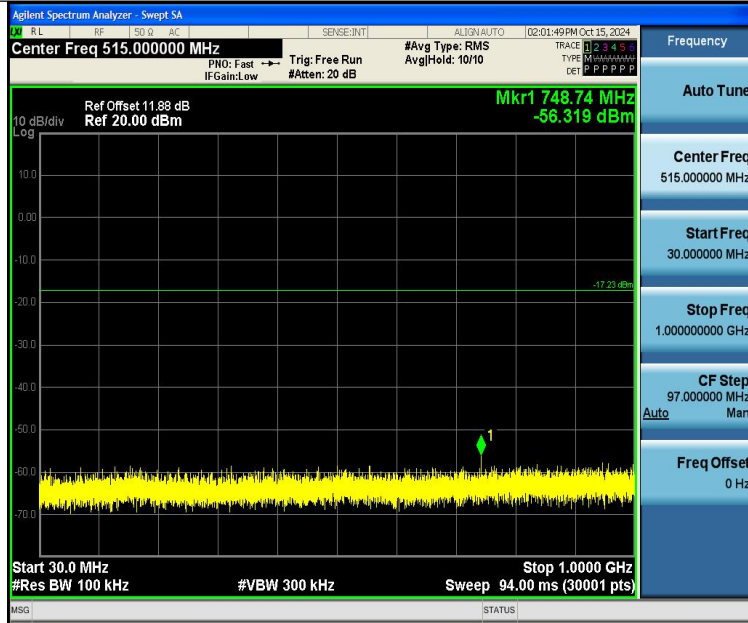
3DH5-Ant1-2402-0~Reference-PASS



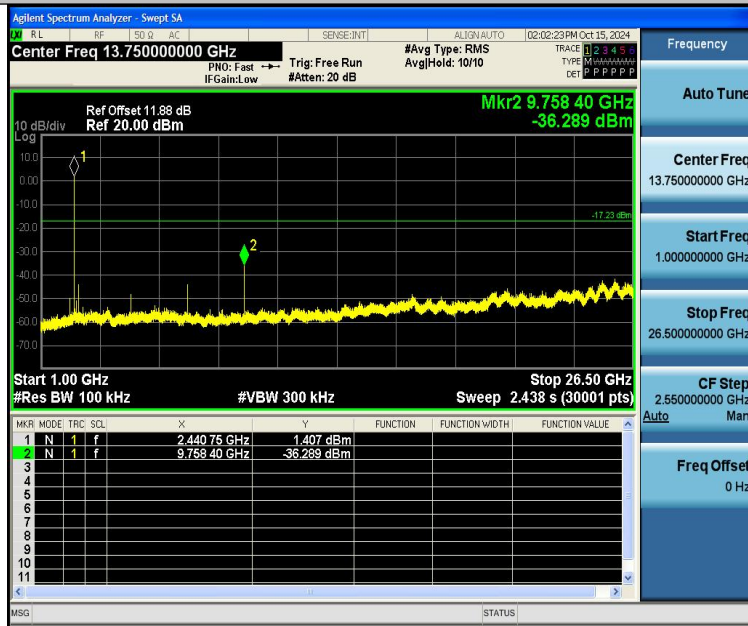
3DH5-Ant1-2402-1000~26500-PASS



3DH5-Ant1-2441-0~Reference-PASS



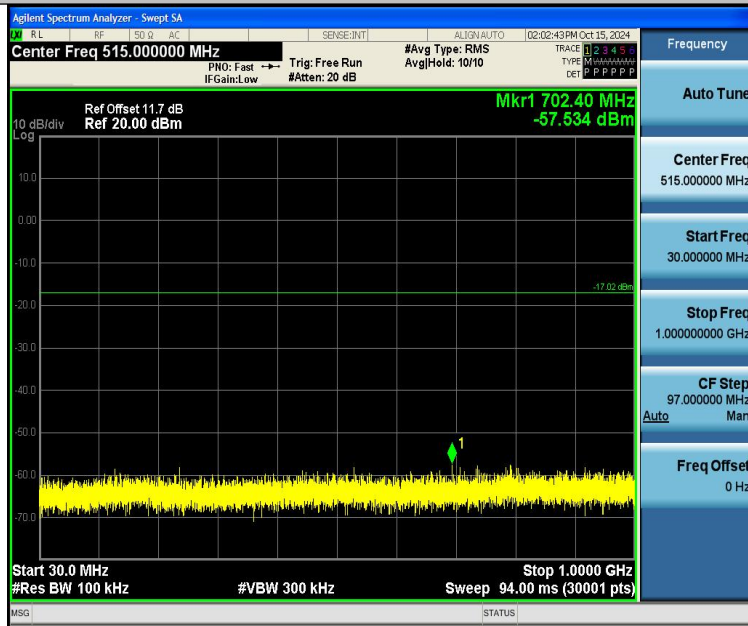
3DH5-Ant1-2441-30~1000-PASS



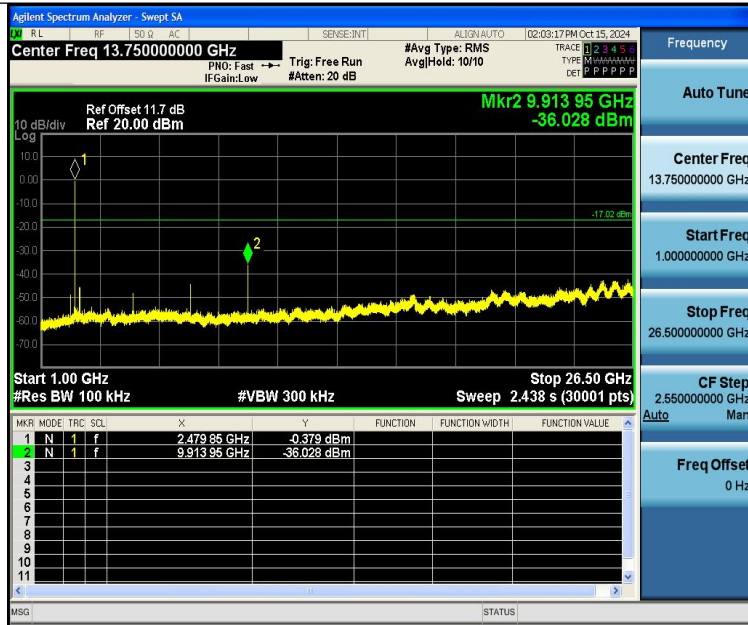
3DH5-Ant1-2441-1000~26500-PASS



3DH5-Ant1-2480-0~Reference-PASS



3DH5-Ant1-2480-30~1000-PASS



3DH5-Ant1-2480-1000~26500-PASS



14 Antenna Requirement

14.1 Test Standard and Requirement

Test Standard	FCC Part15 Section 15.203 /247(c)
Requirement	<p>1) 15.203 requirement:</p> <p>An intentional radiator shall be designed to ensure that no antenna other than that furnished by the responsible party shall be used with the device. The use of a permanently attached antenna or of an antenna that uses a unique coupling to the intentional radiator, the manufacturer may design the unit so that a broken antenna can be replaced by the user, but the use of a standard antenna jack or electrical connector is prohibited.</p> <p>2) 15.247(c) (1)(i) requirement:</p> <p>Systems operating in the 2400-2483.5 MHz band that is used exclusively for fixed. Point-to-point operations may employ transmitting antennas with directional gain greater than 6dBi provided the maximum conducted output power of the intentional radiator is reduced by 1 dB for every 3 dB that the directional gain of the antenna exceeds 6 dBi.</p>

14.2 Antenna Connected Construction

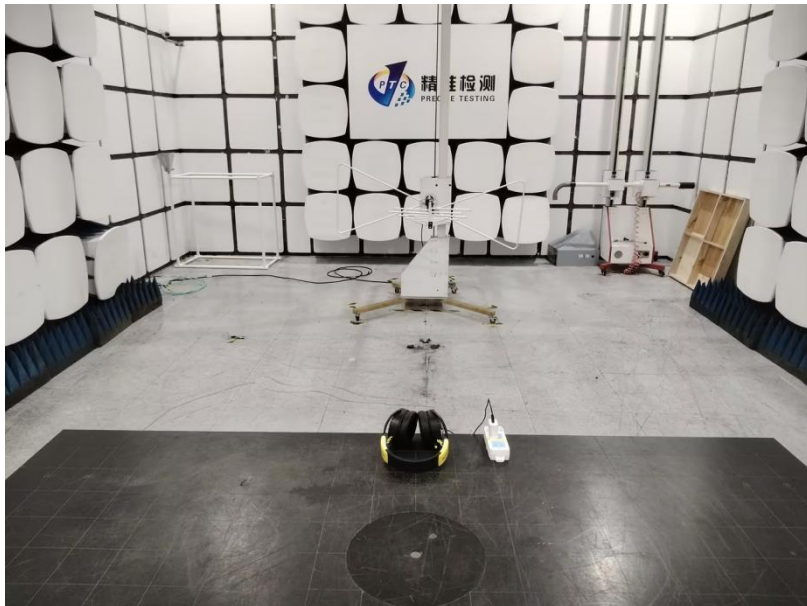
The antenna is PCB antenna which permanently attached, and the best case gain of the antenna is -0.58 dBi. It complies with the standard requirement.

15 APPENDIX I -- TEST SETUP PHOTOGRAPH

Conducted Emissions



Radiated Emissions
From 30M-1GHz



Above 1GHz



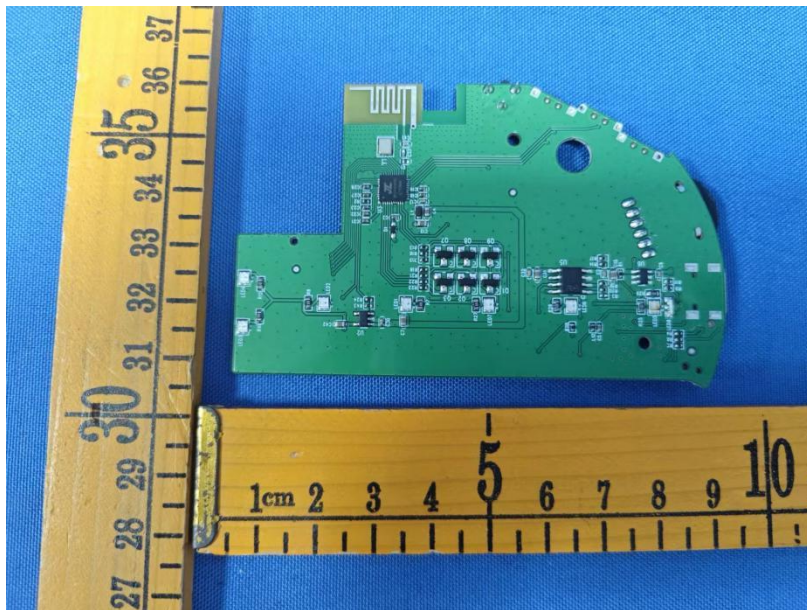
16 APPENDIX II -- EUT PHOTOGRAPH

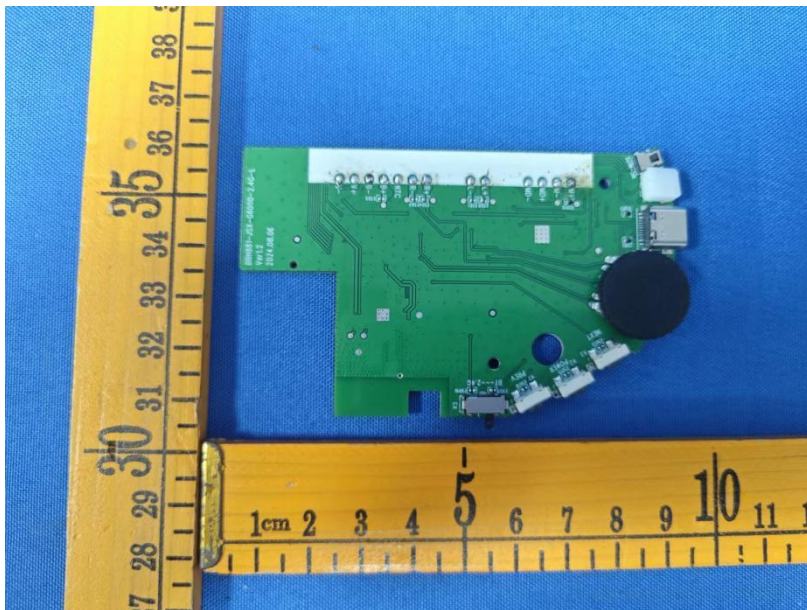
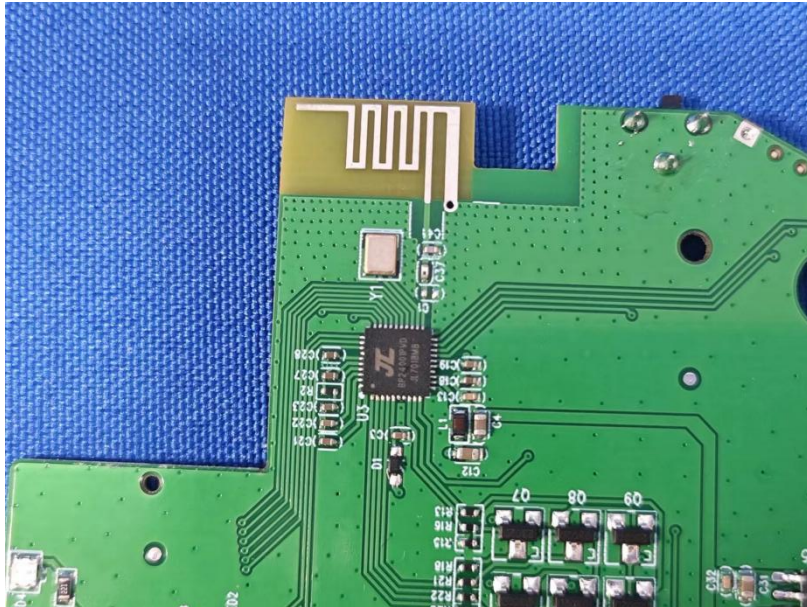


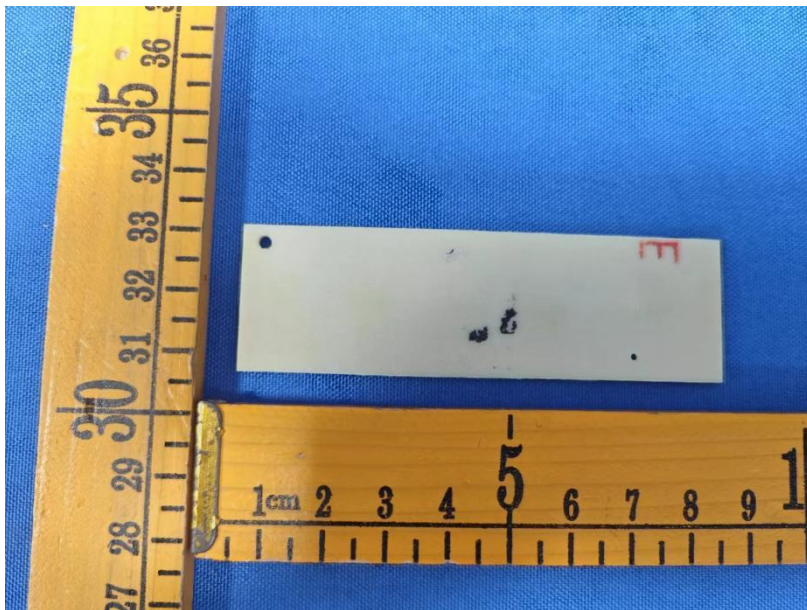
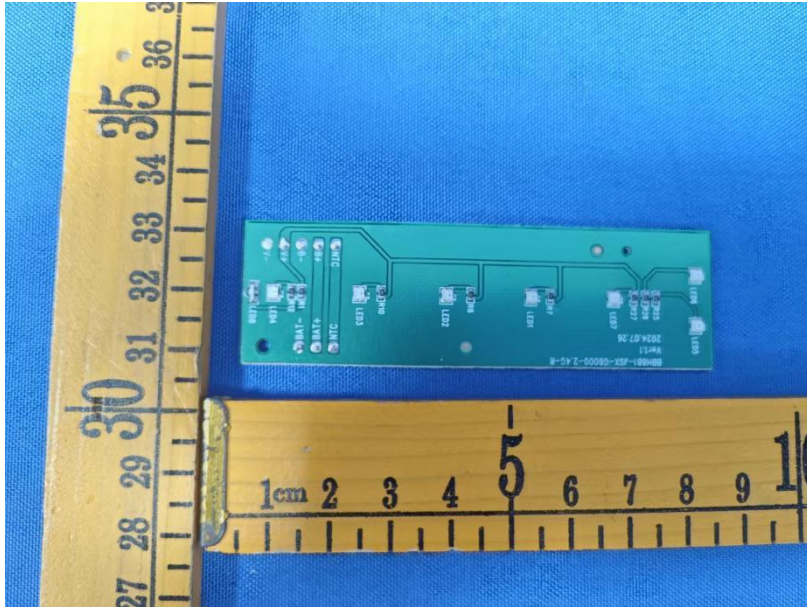


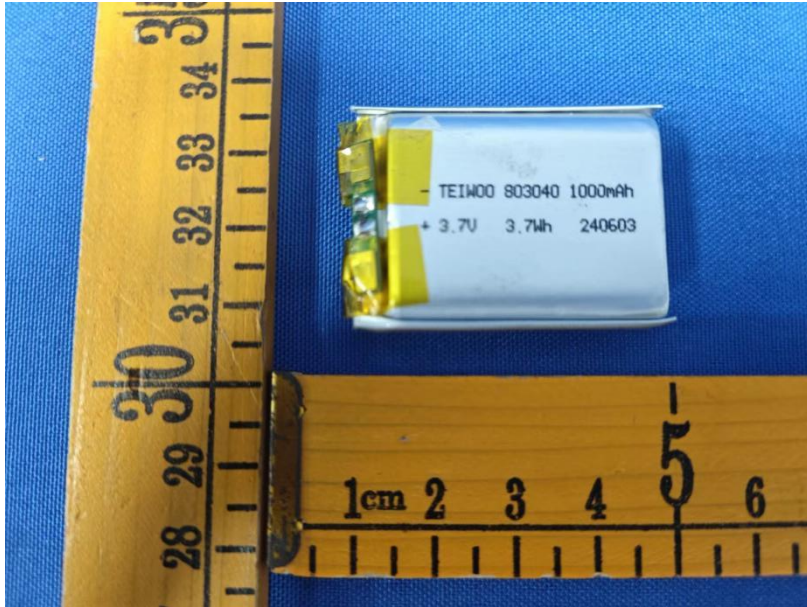












*******THE END REPORT*******