

PRODUCT SPECIFICATION

part number: ANT000030

Product description: 5G Frequency Antenna

Manufacturer: Shenzhen Laiyu Technology Co., Ltd.

Address: 505, Building 0100029, Xiawei Industrial Zone, Zhangxi
Community, Guanhu Street, Longhua District, Shenzhen Cit

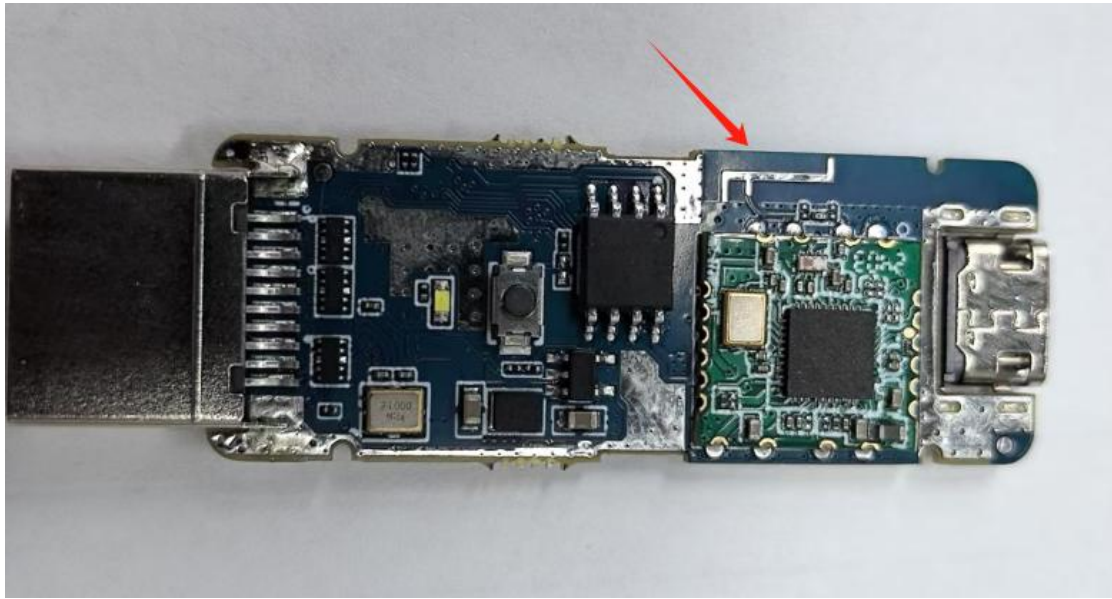
1、PRODUCT TECHNICAL SPECIFICATION

Electrical Specifications	
Frequency Range (MHz)	5150-5850
Bandwidth (MHz)	5G: 700
Input Impedence (Ω)	50
V.S.W.R	≤ 2.0
Gain (dBi)	2.0dBi
Polarization Type	Vertical
Mechanical Specifications	
Antenna Length (mm)	6.6*3.0*0.2mm
Radiator	Copper
Connect Type	NC
Radome Color	Silver
Weight (g)	0.02

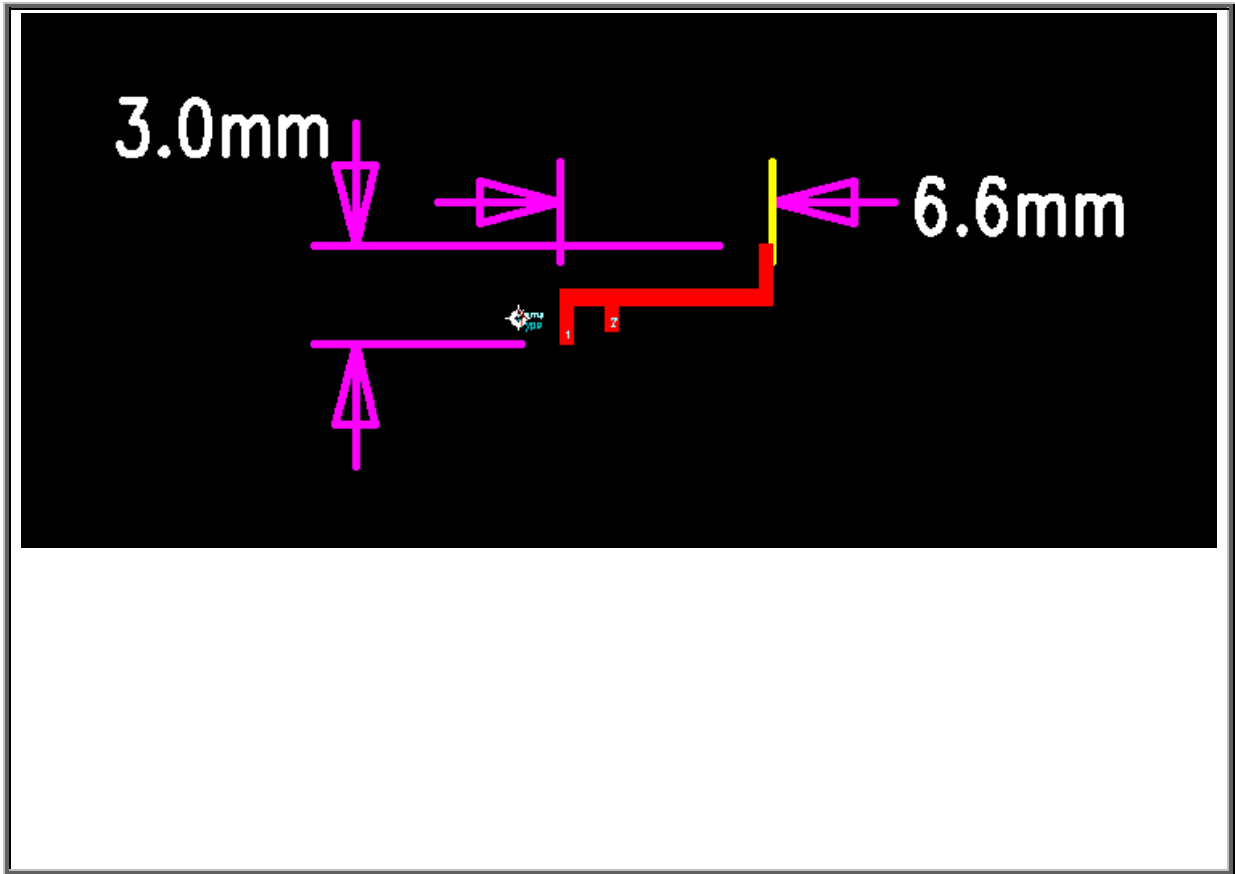
Product introduction :

The antenna is specially designed and produced for wireless built-in antenna equipment. The antenna has beautiful appearance, small structure, high consistency and low cost.

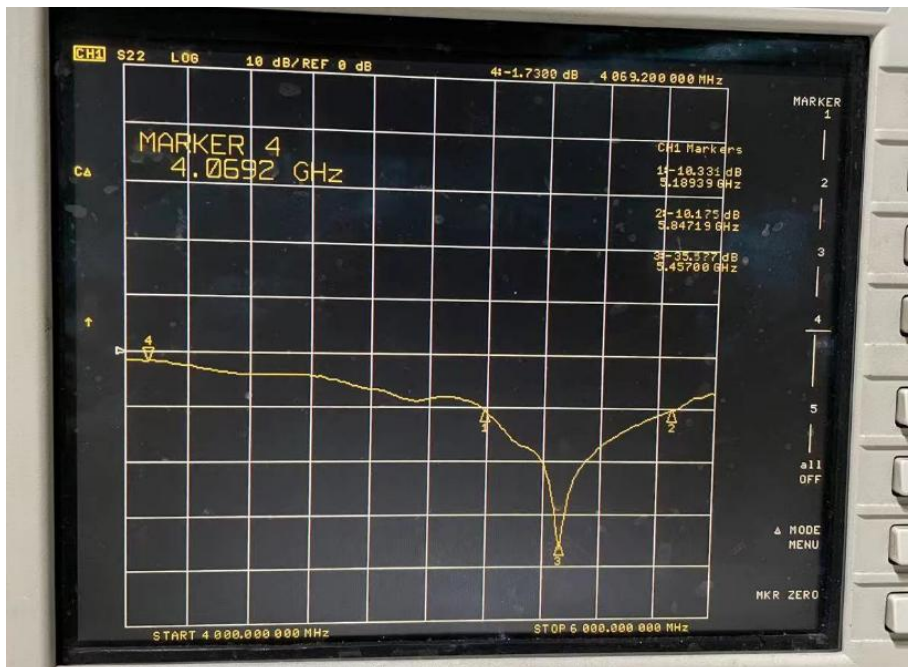
2、PRODUCT PICTURE



3、PRODUCT SPECIFICATION CHART



4. STATIONARY WAVE PATTERN

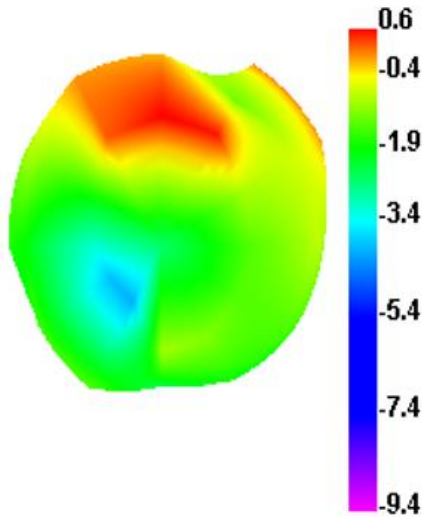


5. Gain and Efficiency:

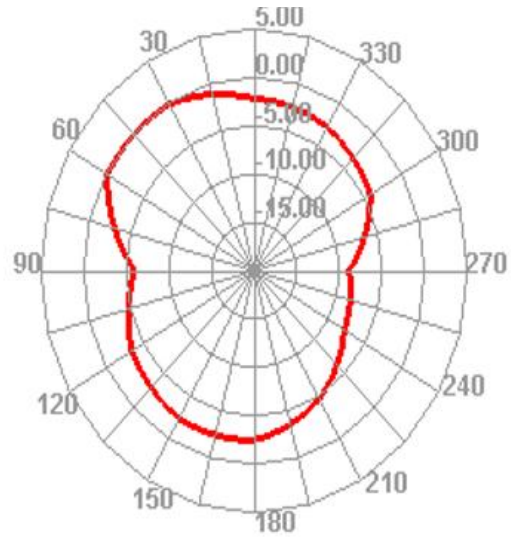
Antenna Parameters:																
Quantity	Freq	Value	Freq	Value	Freq	Value	Freq	Value	Freq	Value	Freq	Value	Freq	Value	Freq	Value
Max U	5.15GHz	0.0013195 W/Hz	5.2GHz	0.0013417 W/Hz	5.25GHz	0.00133 W/Hz	5.3GHz	0.0012894 W/Hz	5.7GHz	0.00074224 W/Hz	5.75GHz	0.00063289 W/Hz	5.8GHz	0.00064894 W/Hz	5.85GHz	0.00060998 W
Peak Directivity		1.9641		1.9956		2.0265		2.0566		2.2576		2.2762		2.2929		2.3082
Peak Gain		1.6944		1.7261		1.7571		1.7873		1.9841		2.0016		2.0171		2.0311
Peak Realized Gain		1.657		1.686		1.6714		1.6203		0.93275		0.87073		0.8195		0.76654
Radiated Power		0.0084363 W		0.0084488 W		0.0082477 W		0.0078783 W		0.0041317 W		0.0038254 W		0.0035566 W		0.003321 W
Accepted Power		0.0097932 W		0.0097677 W		0.0095119 W		0.0090656 W		0.0047012 W		0.0043501 W		0.0040428 W		0.0037741 W
Incident Power		0.01 W		0.01 W		0.01 W		0.01 W		0.01 W		0.01 W		0.01 W		0.01 W
Radiation Efficiency		0.86268		0.86496		0.86709		0.86904		0.87885		0.87937		0.87973		0.87995
Front to Back Ratio		N/A		N/A		N/A		N/A		N/A		N/A		N/A		N/A

6.Field Pattern:

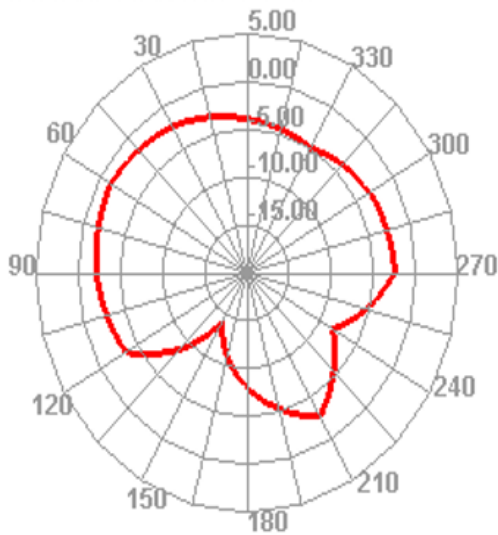
F=5250MHz



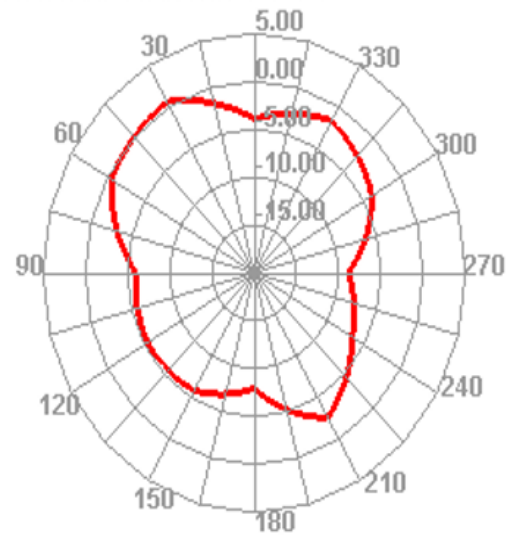
3D



H

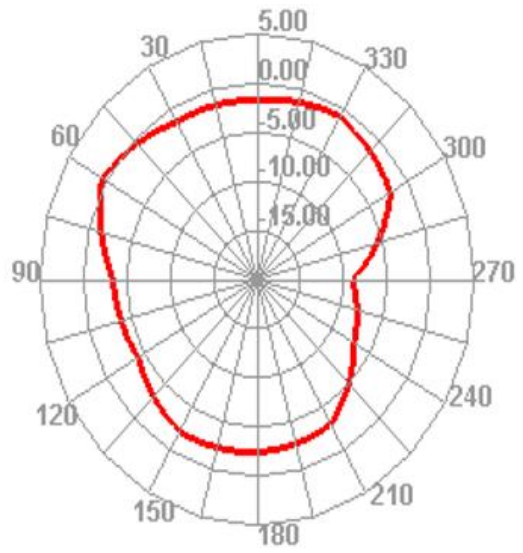
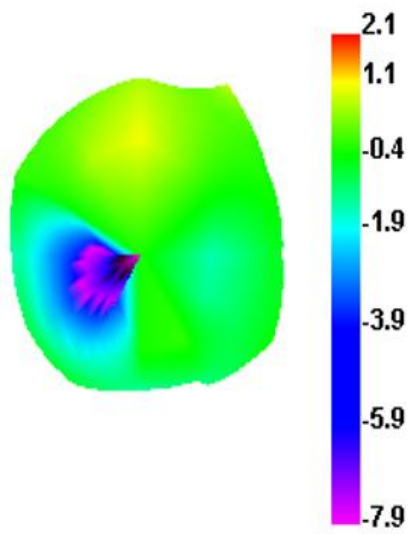


E1



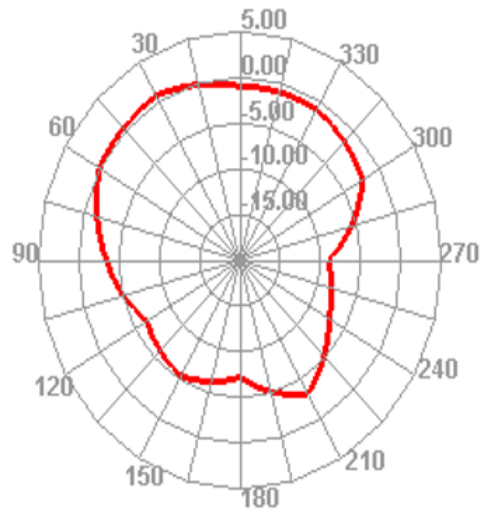
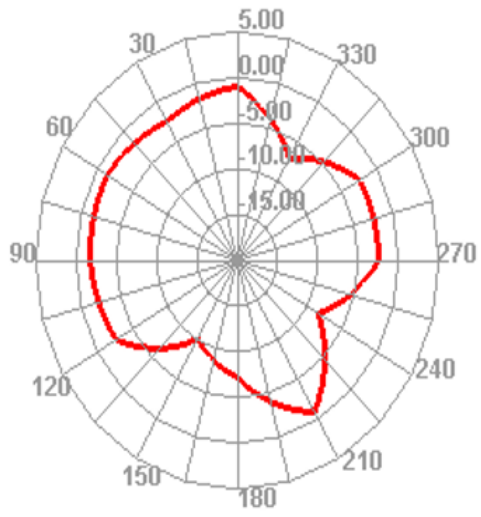
E2

F=5800MHZ



3D

H



E1

E2