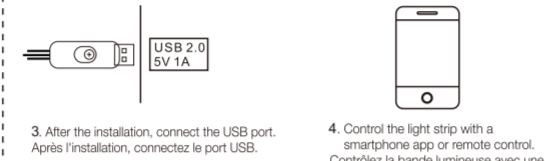
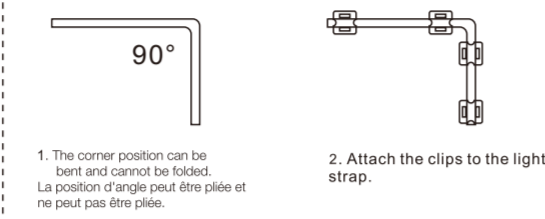


# DREAM COLOR LED

Before using the product,  
please read the manual carefully

## Installation diagram:



## Product Features :



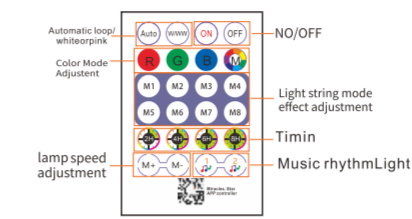
## Product list:



## Product Parameter:

Model	RGB-IC-Neon Strip
APP	Miracles.Star
Language	English
Operation Platform	Android 4.0 or IOS 9.0 or higher
Input Voltage	DC 5V
Max Output Power	2W/metre
IP Rating	IP68
FCC ID	UNIA24032902EC-41
Working Temperature	20-55°C

## REMOTE CONTROL



## Instructions for use :

This product uses USB power supply. You can connect the USB LED Strip to the power supply with USB interface (such as computer, mobile phone charger, Power Bank, USB socket, etc.) After power on, the light will be on, and the default is 7 color cycle change colour. Three Control mode :

1. Button on the LED Strip : press once to switch a luminous mode , and press 3 seconds to turn it on or off.
2. Remote control : use the infrared remote control to press the required function key to control the LED Strip.
3. App control : after downloading the App from the mobile phone , turn on the Bluetooth function of the mobile phone and turn on miracles star / 1 in the upper left corner is the Bluetooth connection , 0 is not connected and can be connected manually. 1 is already connected. The hexagonal symbol in the upper right corner is the debugging color sequence, usually RGB. If the color controlled is different from the actual, you can change other sequences. In the mode interface : there are dozens of luminous colors and dynamics for you to choose from , and the speed and brightness can also be adjusted. In microphone mode : you can change color according to the rhythm of ambient sound , and also select different modes and sensitivity.

## APP installation instructions:



Scan the QR-Code to download the APP  
OR  
Search "Miracles.Star" in APP Store or Google Play Store.

## Disclaimer

Please read through this user manual thoroughly and make sure you following the instruction to use the product properly and safely. If the product damage is caused by misuse if the product damage is caused by the misuse of the user the supplier is not responsible for the damage even when the product is within its warranty period.

1. Please keep the product away from flammable object, explosive gas and liquid.
2. Ensure that the cables and pins are connected correctly and properly to avoid hazard and damage caused by short circuit.
3. Before connecting the product to the power source, please make sure that the power voltage of the power source is 5V.
4. Please do not connect the product to the power source before the installation of the product is completed.
5. Please ensure the remote control sensor on the main LED strip is not covered or blocked in order to make sure that the remote control will work properly.
6. Please do not try to repair the product.
7. Never cut the LED strip.



A面

## Disposal

The packaging material is recyclable. Dispose of the packaging in an environmentally-friendly manner and make it available to the collection service for recyclable materials.

Dispose of the product in an environmentally-friendly manner. The product does not belong in the household garbage. Dispose of it at a recycling center for old electric and elec-tronic equipment. For more information, please contact the administration in your community.

Batteries and rechargeable batteries must be removed and disposed of separately before disposing of the product. To protect the environment, batteries and rechargeable batteries may not be disposed of together with normal household waste. Instead they must be turned in at appropriate collection points. Please also observe applicable statutory provisions regulating the disposal of batteries.

## Service Procedure

If you have any questions, please open your order page, and click button "Get help with order" to describe your issues, our customer service team will reply you within 24 hours.

You can:

1. Return it back without any reason within 30 days after receipt of goods.
2. Get refund or replacement without shipping rate within 30 days.
3. Get free replacement parts (need to cover shipping rate) within 365 days.

**WARNING**

- **INGESTION HAZARD:** This product contains a button cell or coin battery.
- **DEATH** or serious injury can occur if ingested.
- A swallowed button cell or coin battery can cause **Internal Chemical Burns** in as little as **2 hours**.
- **KEEP** new and used batteries **OUT OF REACH of CHILDREN**
- **Seek immediate medical attention** if a battery is suspected to be swallowed or inserted inside any part of the body.

- a) The product contains non-replaceable batteries.
- b) Battery type (e.g. CR2025).
- c) Nominal voltage 3V.

- a) The statement "Remove and immediately recycle or dispose of used batteries according to local regulations and keep away from children. Do NOT dispose of batteries in household trash or incinerate."
- b) The statement "Even used batteries may cause severe injury or death."
- c) The statement "Call a local poison control center for treatment information."
- d) A statement indicating the compatible battery type (e.g., CR2025).
- e) A statement indicating the nominal battery voltage (e.g., 3V).
- f) The statement "Non-rechargeable batteries are not to be recharged."
- g) The statement "Do not force discharge, recharge, disassemble, heat above (manufacturer's specified temperature rating) or incinerate. Doing so may result in injury due to venting, leakage or explosion resulting in chemical burns."

- a) The statement "Ensure the batteries are installed correctly according to polarity (+ and-)."
- b) The statement "Do not mix old and new batteries, different brands or types of batteries, such as alkaline, carbon-zinc, or rechargeable batteries."
- c) The statement "Remove and immediately recycle or dispose of batteries from equipment not used for an extended period of time according to local regulations."
- d) The statement "Always completely secure the battery compartment. If the battery compartment does not close securely, stop using the product, remove the batteries, and keep them away from children."

## FCC Statement

Changes or modifications not expressly approved by the party responsible for compliance could void the user's authority to operate the equipment.

This device complies with Part 15 of the FCC Rules. Operation is subject to the following two conditions: (1) this device may not cause harmful interference, and (2) this device must accept any interference received, including interference that may cause undesired operation.

This equipment has been tested and found to comply with the limits for a Class B digital device, pursuant to Part 15 of the FCC Rules. These limits are designed to provide reasonable protection against harmful interference in a residential installation. This equipment generates, uses and can radiate radio frequency energy and, if not installed and used in accordance with the instructions, may cause harmful interference to radio communications. However, there is no guarantee that interference will not occur in a particular installation.

If this equipment does cause harmful interference to radio or television reception, which can be determined by turning the equipment off and on, the user is encouraged to try to correct the interference by one or more of the following measures:

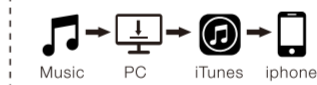
- Reorient or relocate the receiving antenna.
- Increase the separation between the equipment and receiver.
- Connect the equipment into an outlet on a circuit different from that to which the receiver is connected.
- Consult the dealer or an experienced radio/TV technician for help.

## Tips for music function

Q: Why APP music function can't play music?(as shown)  
A: no downloaded music in phone storage or SD card.

## Solution:

IOS: Download music from your computer's iTunes to your phone storage.



Android: Download music to phone storage.



Manufacturer: Dongguan Qidianxing Lighting Technology Co., Ltd.  
Address: Room 401, Building 12, No.3 Yongtai Road, Tangxia Town, Dongguan City, Guangdong Province, China

B面

To maintain compliance with FCC's RF Exposure guidelines, This equipment should be installed and operated with minimum distance between 20cm the radiator your body: Use only the supplied antenna.