

Test Report

Applicant : Shenzhen MingLv Legal Technology Co., LTD
Address : No. 905, Wanhui Building, No. 4001 Longgang Avenue, Pingnan Community, Longgang, Shenzhen, Guangdong, China
Product Name : Transmitter Charging Dock
Brand Mark : NOUUI
Model : NU-TV002A
NU-TV001A, NU-TV002, NU-TV003A, NU-TV004A, NU-TV005A, NU-TV006A, HS013A, HS014A, HS015A, HS016A, HS017A, HS018A
Series model : NU-HS001A, NU-HS002A, NU-HS003A, NU-HS004A, NU-HS005A, TE001A, TE002A, TE003A, TE004A, TE005A, TE006A, TE007A, TE008A, TE009A, TE010A
FCC ID : 2BKEN-NUTV002A
Report Number : BLA-EMC-202409-A4802
Date of Receipt : 2024.09.14
Date of Test : 2024.09.14 to 2024.10.14
Test Standard : 47 CFR Part 15, Subpart C 15.247
Test Result : Pass

Compiled by: *Hugh*

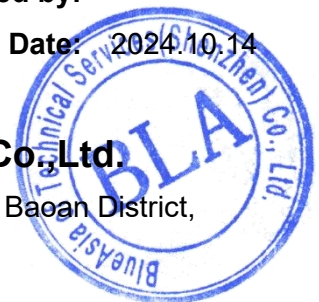
Review by: *Sueels*

Approved by: *Blue Zheng*

Issued Date: 2024.10.14

BlueAsia of Technical Services(Shenzhen) Co., Ltd.

Address: Building C, No. 107, Shihuan Road, Shiyuan Sub-District, Baoan District, Shenzhen, Guangdong Province, China



The test report is effective only with both signature and specialized stamp and The result(s) shown in this report refer only to the sample(s) tested. Without written approval of BlueAsia, this report can't be reproduced except in full. The results described in this report do not represent the quality or characteristics of the sampled batch, nor do they represent any similar or identical products that are not explicitly stated.

Table of Contents

1	General information	4
1.1	General information	4
1.2	General description of EUT	4
2	Test summary	5
3	Test Configuration	6
3.1	Test mode	6
3.2	Operation Frequency each of channel	7
3.3	Test channel	7
3.4	Configuration diagram of EUT	8
3.5	Auxiliary equipment	8
3.6	Test environment	8
4	Laboratory information	9
4.1	Laboratory and accreditations	9
4.2	Measurement uncertainty	9
5	Test equipment	10
6	Test result	12
6.1	Antenna requirement	12
6.2	Conducted emissions at AC power line (150 kHz-30 MHz)	13
6.3	Conducted peak output Power	17
6.4	20dB Bandwidth	18
6.5	Conducted Band Edges Measurement	19
6.6	Conducted spurious emissions	20
6.7	Carrier Frequencies Separation	21
6.8	Hopping Channel Number	22
6.9	Dwell Time	23
6.10	Radiated spurious emissions	24
6.11	Radiated emissions which fall in the restricted bands	35
7	Appendix A	42
	Appendix B: photographs of test setup	92
	Appendix C: photographs of EUT	94

Revise Record

Version No.	Date	Description
01	2024.10.14	Original

BlueAsia

1 General information

1.1 General information

Applicant	Shenzhen MingLv Legal Technology Co., LTD
Address	No. 905, Wanhui Building, No. 4001 Longgang Avenue, Pingnan Community, Longgang, Shenzhen, Guangdong, China
Manufacturer	Aikexun Intelligent Acoustic Technology Co., Ltd
Address	No. 15 of Technology Park 1st Road, Shiwan Town, Boluo County, Huizhou City
Factory	N/A
Address	N/A

1.2 General description of EUT

Product name	Transmitter Charging Dock
Model no.	NU-TV002A
Series model	NU-TV001A, NU-TV002, NU-TV003A, NU-TV004A, NU-TV005A, NU-TV006A, HS013A, HS014A, HS015A, HS016A, HS017A, HS018A, NU-HS001A, NU-HS002A, NU-HS003A, NU-HS004A, NU-HS005A, TE001A, TE002A, TE003A, TE004A, TE005A, TE006A, TE007A, TE008A, TE009A, TE010A
Note	Their electrical circuit design, layout, components used and internal wiring are identical, Only the Item number is different.
Test sample no.	BLA-EMC-202409-A48- Transmitter Charging Dock
Operation Frequency:	2402MHz-2480MHz
Modulation Type:	GFSK, pi/4DQPSK, 8DPSK
Channel Spacing:	1MHz
Number of Channels:	79
Antenna Type:	Chip antenna
Antenna Gain:	3.49 dBi (Provided by customer)
Adapter information	Mode: BS05A-0501000US INPUT: 100-240V ~ 50/60Hz 0.25A Max OUTPUT: 5V = 1000mA
Hardware version	V5.0
Software version	V01.0.1

Note: For a more detailed description, please refer to Specification or User's Manual supplied by the applicant and/or manufacturer.

2 Test summary

No.	Test item	Result	Remark
1	Antenna Requirement	Pass	
2	Conducted Emissions at AC Power Line (150kHz-30MHz)	Pass	
3	Conducted Peak Output Power	Pass	
4	20dB Bandwidth	Pass	
5	Conducted Band Edges Measurement	Pass	
6	Conducted Spurious Emissions	Pass	
7	Carrier Frequencies Separation	Pass	
8	Hopping Channel Number	Pass	
9	Dwell Time	Pass	
10	Radiated Spurious Emissions	Pass	
11	Radiated Emissions which fall in the restricted bands	Pass	

3 Test Configuration

3.1 Test mode

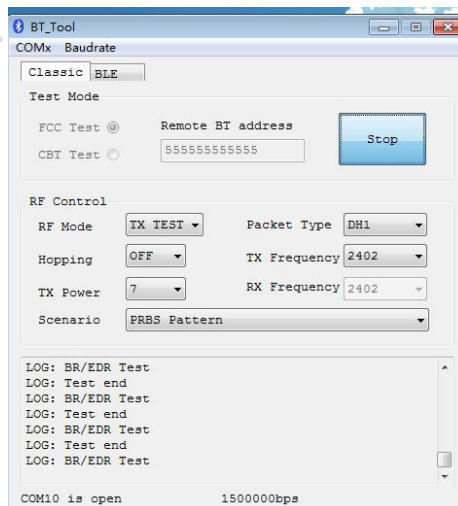
Test Mode ^{Note 1}	Description
TX	Keep the EUT in continuously transmitting mode with modulation. (hopping and non-hopping mode all have been tested)
RX	Keep the EUT in receiving mode
TX Low channel	Keep the EUT in continuously transmitting mode in low channel
TX middle channel	Keep the EUT in continuously transmitting mode in middle channel
TX high channel	Keep the EUT in continuously transmitting mode in high channel

Note 1: The EUT was configured to measure its highest possible emission and/or immunity level. The test modes were adapted according to the operation manual for use; the EUT was operated in the engineering mode ^{Note 2} to fix the TX or Rx frequency that was for the purpose of the measurements.

Note 2: Special software is used. The software provided by client to enable the EUT under transmission condition continuously at specific channel frequencies individually.

Power level setup in software			
Test Software Name	BT_Tool		
Mode	Channel	Frequency (MHz)	Soft Set
GFSK, pi/4DQPSK, 8DPSK	CH00	2402	TX level : 7
	CH39	2441	
	CH78	2480	

Run Software



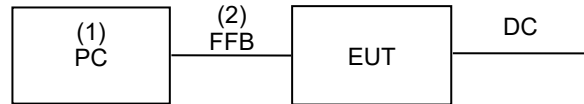
3.2 Operation Frequency each of channel

Channel	Frequency	Channel	Frequency	Channel	Frequency	Channel	Frequency
0	2402MHz	20	2422MHz	40	2442MHz	60	2462MHz
1	2403MHz	21	2423MHz	41	2443MHz	61	2463MHz
2	2404MHz	22	2424MHz	42	2444MHz	62	2464MHz
3	2405MHz	23	2425MHz	43	2445MHz	63	2465MHz
4	2406MHz	24	2426MHz	44	2446MHz	64	2466MHz
5	2407MHz	25	2427MHz	45	2447MHz	65	2467MHz
6	2408MHz	26	2428MHz	46	2448MHz	66	2468MHz
7	2409MHz	27	2429MHz	47	2449MHz	67	2469MHz
8	2410MHz	28	2430MHz	48	2450MHz	68	2470MHz
9	2411MHz	29	2431MHz	49	2451MHz	69	2471MHz
10	2412MHz	30	2432MHz	50	2452MHz	70	2472MHz
11	2413MHz	31	2433MHz	51	2453MHz	71	2473MHz
12	2414MHz	32	2434MHz	52	2454MHz	72	2474MHz
13	2415MHz	33	2435MHz	53	2455MHz	73	2475MHz
14	2416MHz	34	2436MHz	54	2456MHz	74	2476MHz
15	2417MHz	35	2437MHz	55	2457MHz	75	2477MHz
16	2418MHz	36	2438MHz	56	2458MHz	76	2478MHz
17	2419MHz	37	2439MHz	57	2459MHz	77	2479MHz
18	2420MHz	38	2440MHz	58	2460MHz	78	2480MHz
19	2421MHz	39	2441MHz	59	2461MHz		--

3.3 Test channel

Channel	Frequency
The lowest channel	2402MHz
The middle channel	2441MHz
The Highest channel	2480MHz

3.4 Configuration diagram of EUT



Support equipment

Name	Device type	Brand	Mode	Series No	Remark
(1)	PC	Lenovo	E460C	N/A	N/A
(2)	Fixed frequency board	N/A	N/A	N/A	N/A

3.5 Auxiliary equipment

Device Type	Manufacturer	Model Name	Serial No.	Remark
PC	Lenovo	E460C	N/A	From lab (No.BLA-ZC-BS-2022005)

Note:

"--" mean no any auxiliary device during testing.

3.6 Test environment

Environment	Temperature	Voltage
Normal	25°C	DC 5V

4 Laboratory information

4.1 Laboratory and accreditations

The test facility is recognized, certified, or accredited by the following organizations:

Company name:	BlueAsia of Technical Services(Shenzhen) Co., Ltd.
Address:	Building C, No. 107, Shihuan Road, Shiyan Sub-District, Baoan District, Shenzhen, Guangdong Province, China
CNAS accredited No.:	L9788
A2LA Cert. No.:	5071.01
FCC Designation No.:	CN1252
ISED CAB identifier No.:	CN0028
Telephone:	+86-755-28682673
FAX:	+86-755-28682673

4.2 Measurement uncertainty

This uncertainty represents an expanded uncertainty expressed at approximately the 95% confidence level using a coverage factor of $k=1.96$.

Parameter	Expanded Uncertainty
Radiated Emission(9kHz-30MHz)	± 4.34 dB
Radiated Emission(30Mz-1000MHz)	± 4.24 dB
Radiated Emission(1GHz-18GHz)	± 4.68 dB
AC Power Line Conducted Emission(150kHz-30MHz)	± 3.45 dB
Occupied Channel Bandwidth	± 5 %
RF output power, conducted	± 1.5 dB
Power Spectral Density, conducted	± 3.0 dB
Unwanted Emissions, conducted	± 3.0 dB
Temperature	± 3 °C
Supply voltages	± 3 %
Time	± 5 %

5 Test equipment

RF conducted

Equipment	Name	Model	Manufacture	S/N	Cal. Date	Due. Date
BLA-EMC-003-003	Shield room	5*3*3	SKET	N/A	2023/11/16	2025/11/15
BLA-EMC-016	Signal Generator	N5182A	Agilent	MY52420 567	2024/06/28	2025/06/27
BLA-EMC-038	Spectrum	N9020A	Agilent	MY49100 060	2024/08/08	2025/08/07
BLA-EMC-042	Power sensor	RPR3006W	DARE	14100889 SN042	2024/08/08	2025/08/07
BLA-EMC-044	Radio communication tester	CMW500	R&S	132429	2024/08/08	2025/08/07
BLA-EMC-064	Signal Generator	N5182B	KEYSIGHT	MY58108 892	2024/06/28	2025/06/27
BLA-EMC-079	Spectrum	N9020A	Agilent	MY54420 161	2024/08/08	2025/08/07
BLA-EMC-088	Audio Analyzer	ATS-1	Audio Precision	ATS1410 94	2024/06/28	2025/06/27

Radiated Spurious Emissions (Below 1GHz)

Equipment	Name	Model	Manufacture	S/N	Cal. Date	Due. Date
BLA-EMC-002-01	Anechoic chamber	9*6*6 chamber	SKET	N/A	2024/3/27	2027/3/26
BLA-EMC-002-02	Control room	966 control room	SKET	N/A	2024/3/27	2027/3/26
BLA-EMC-009	EMI receiver	ESR7	R&S	101199	2024/08/08	2025/08/07
BLA-EMC-043	Loop antenna	FMZB1519B	Schwarzbeck	00102	2024/06/29	2026/06/28
BLA-EMC-065	Broadband antenna	VULB9168	Schwarzbeck	01065P	2024/06/29	2026/06/27
BLA-XC-01	Coaxial Cable	N/A	BlueAsia	V01	N/A	N/A
BLA-XC-02	Coaxial Cable	N/A	BlueAsia	V02	N/A	N/A

Conducted Emissions

Equipment	Name	Model	Manufacture	S/N	Cal. Date	Due. Date
BLA-EMC-003-001	Shield room	8*3*3	SKET	N/A	2023/11/16	2025/11/15
BLA-EMC-009	EMI receiver	ESR7	R&S	101199	2024/08/08	2025/08/07
BLA-EMC-011	LISN	ENV216	R&S	101372	2024/08/08	2025/08/07
BLA-EMC-033	Impedance transformer	DC-2GHz	DFXP	N/A	2024/06/28	2025/06/27
BLA-EMC-041	LISN	AT166-2	ATTEN	AKK180600 0003	2024/08/08	2025/08/07
BLA-EMC-045	Impedance stable network	ISNT8-cat 6	TESEQ	53580	2024/08/08	2025/08/07
BLA-EMC-095	Single-channel vehicle artificial power network	NNBM 8124	Schwarzbeck	01045	2024/06/28	2025/06/27
BLA-EMC-096	Single-channel vehicle artificial power network	NNBM 8124	Schwarzbeck	01075	2024/06/28	2025/06/27
BLA-XC-05	Coaxial Cable	N/A	BlueAsia	V05	N/A	N/A

Radiated Spurious Emissions (Above 1GHz)

Equipment	Name	Model	Manufacture	S/N	Cal. Date	Due. Date
BLA-EMC-001-01	Anechoic chamber	9*6*6 chamber	SKET	N/A	2023/11/16	2026/11/15
BLA-EMC-001-02	Control Room	966 control room	SKET	N/A	2023/11/16	2025/11/15
BLA-EMC-008	Spectrum	FSP40	R&S	100817	2024/08/08	2025/08/07
BLA-EMC-012	Broadband antenna	VULB9168	Schwarzbeck	00836 P:00227	2022/10/12	2025/10/11
BLA-EMC-013	Horn Antenna	BBHA9120D	Schwarzbeck	01892	2024/06/29	2026/06/28
BLA-EMC-014	Amplifier	PA_000318G-45	SKET	PA201804 3003	2024/08/08	2025/08/07
BLA-EMC-046	Filter bank	2.4G/5G Filter bank	SKET	N/A	2024/06/28	2025/06/27
BLA-EMC-061	Receiver	ESPI7	R&S	101477	2024/06/28	2025/06/27
BLA-EMC-066	Amplifier	LNPA_30M01 G-30	SKET	SK202106 0801	2024/06/28	2025/06/27
BLA-EMC-086	Amplifier	LNPA_18G40 G-50dB	SKET	SK202207 1301	2024/06/28	2025/06/27
BLA-EMC-087	Horn Antenna	BBHA 9170	Schwarzbeck	1106	2024/06/29	2026/06/28
BLA-XC-03	Coaxial Cable	N/A	BlueAsia	V03	N/A	N/A
BLA-XC-04	Coaxial Cable	N/A	BlueAsia	V04	N/A	N/A

Test Software Record:

Software No.	Software Name	Manufacture	Software version	Test site
BLA-EMC-S001	EZ-EMC	EZ	EEMC-3A1+	RE
BLA-EMC-S002	EZ-EMC	EZ	EEMC-3A1+	RE
BLA-EMC-S003	EZ-EMC	EZ	EEMC-3A1+	CE
BLA-EMC-S010	MTS 8310	MW	2.0.0.0	RF
BLA-EMC-S014	Bluetooth and WiFi Test System	Tonscend	2.5.77.0418	RF

6 Test result

6.1 Antenna requirement

Test Standard	47 CFR Part 15, Subpart C 15.247
Test Method	N/A

6.1.1 Requirement

An intentional radiator shall be designed to ensure that no antenna other than that furnished by the responsible party shall be used with the device. The use of an antenna that uses a unique coupling to the intentional radiator, the manufacturer may design the unit permanently attached antenna or of a so that a broken antenna can be replaced by the user, but the use of a standard antenna jack or electrical connector is prohibited.

EUT antenna:

The antenna is integrated on the main PCB and no consideration of replacement. The best case gain of the antenna is 3.49 dBi.

6.2 Conducted emissions at AC power line (150 kHz-30 MHz)

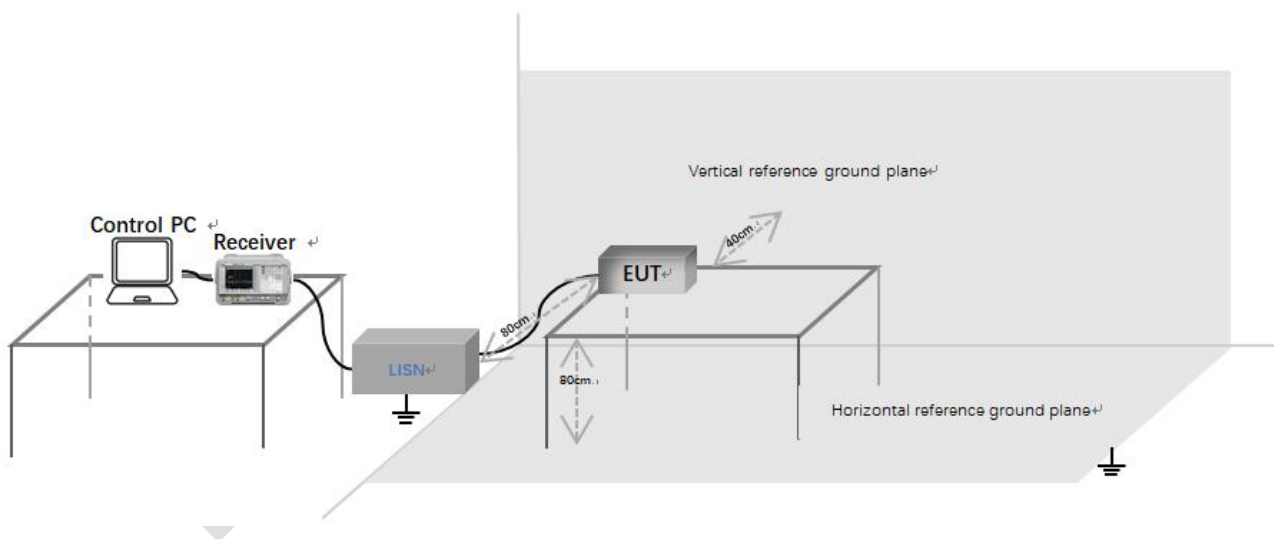
Test Standard	47 CFR Part 15, Subpart C 15.247
Test Method	ANSI C63.10 (2013) Section 6.2
Test Mode (Pre-Scan)	TX
Test Mode (Final Test)	TX

6.2.1 Limit

Frequency of emission(MHz)	Conducted limit(dB μ V)	
	Quasi-peak	Average
0.15-0.5	66 to 56*	56 to 46*
0.5-5	56	46
5-30	60	50

*Decreases with the logarithm of the frequency.

6.2.2 Test setup



Description of test setup connection:

- Connect the control PC to the receiver through a USB to GPIB cable;
- The receiver is connected to the LISN through a coaxial line;
- Connect the power port of LISN to the EUT.

6.2.3 Procedure

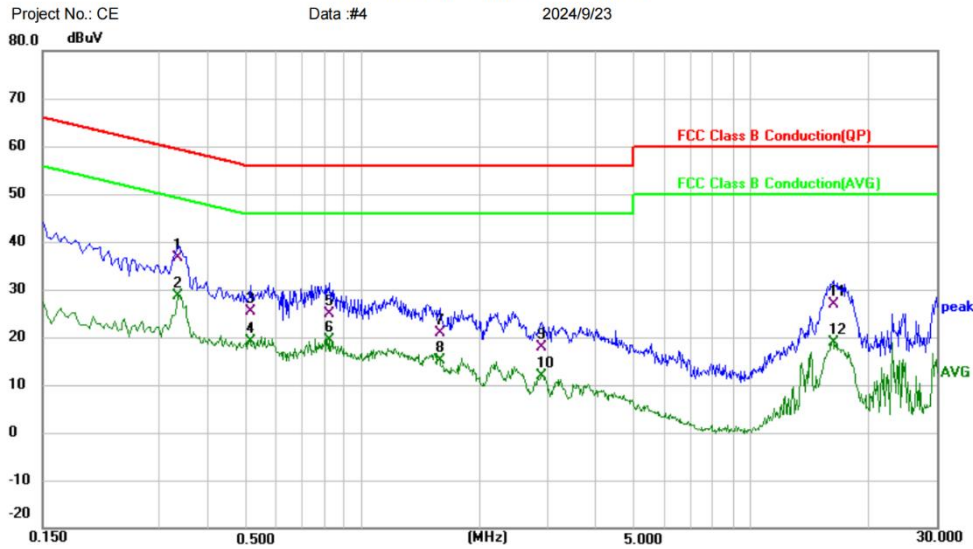
- 1) The mains terminal disturbance voltage test was conducted in a shielded room.
- 2) The EUT was connected to AC power source through a LISN 1 (Line Impedance Stabilization Network) which provides a 50ohm/50H + 5ohm linear impedance. The power cables of all other units of the EUT were connected to a second LISN 2, which was bonded to the ground reference plane in the same way as the LISN 1 for the unit being measured. A multiple socket outlet strip was used to connect multiple power cables to a single LISN provided the rating of the LISN was not exceeded.
- 3) The tabletop EUT was placed upon a non-metallic table 0.8m above the ground reference plane. And for floor-standing arrangement, the EUT was placed on the horizontal ground reference plane,
- 4) The test was performed with a vertical ground reference plane. The rear of the EUT shall be 0.4 m from the vertical ground reference plane. The vertical ground reference plane was bonded to the horizontal ground reference plane. The LISN 1 was placed 0.8 m from the boundary of the unit under test and bonded to a ground reference plane for LISNs mounted on top of the ground reference plane. This distance was between the closest points of the LISN 1 and the EUT. All other units of the EUT and associated equipment was at least 0.8 m from the LISN 2.
- 5) In order to find the maximum emission, the relative positions of equipment and all of the interface cables must be changed according to ANSI C63.10 on conducted measurement.
- 6) *All modes have been tested, and only the worst mode is showed in the report.*

LISN=Read Level+ Cable Loss+ LISN Factor

6.2.4 Test data

Remark: During the test, pre-scan the GFSK, pi/4QPSK, 8DPSK mode, and found the GFSK mode which it is worse case.

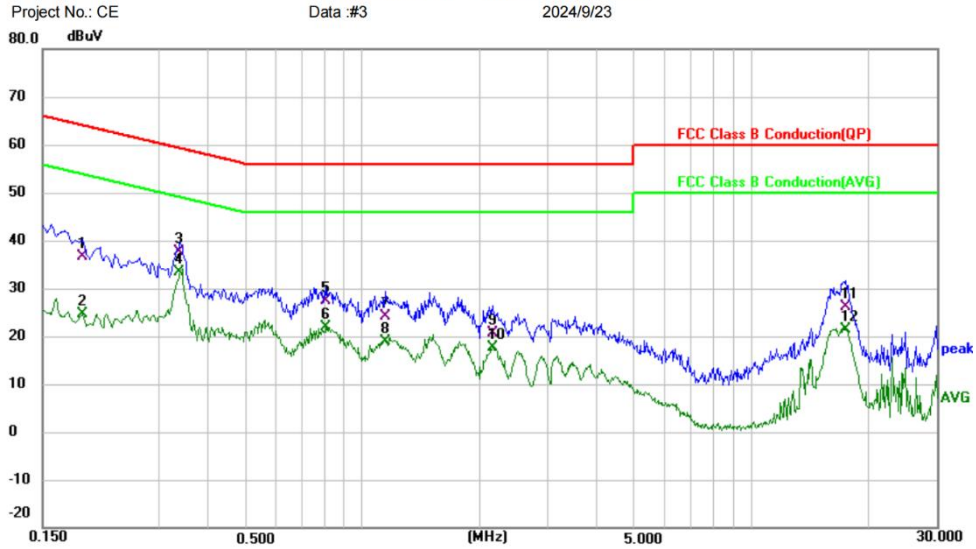
[Test mode: TX]; [Line: Line];[Power:AC120V/60Hz]



No.	Mk.	Freq. MHz	Reading Level dBuV	Correct Factor dB	Measure- ment dBuV	Limit dBuV	Over dB	Detector	Antenna Height cm	Table Degree degree	Comment
1		0.3339	26.70	9.86	36.56	59.35	-22.79	QP			
2	*	0.3339	18.88	9.86	28.74	49.35	-20.61	AVG			
3		0.5140	15.61	9.84	25.45	56.00	-30.55	QP			
4		0.5140	9.26	9.84	19.10	46.00	-26.90	AVG			
5		0.8260	15.24	9.65	24.89	56.00	-31.11	QP			
6		0.8260	9.64	9.65	19.29	46.00	-26.71	AVG			
7		1.5780	10.94	9.86	20.80	56.00	-35.20	QP			
8		1.5780	5.18	9.86	15.04	46.00	-30.96	AVG			
9		2.8860	7.84	10.02	17.86	56.00	-38.14	QP			
10		2.8860	1.90	10.02	11.92	46.00	-34.08	AVG			
11		16.2620	14.80	12.14	26.94	60.00	-33.06	QP			
12		16.2620	6.64	12.14	18.78	50.00	-31.22	AVG			

Test Result: Pass

[Test mode: TX]; [Line: Neutral]; [Power: AC120V/60Hz]



No. Mk.	Freq. MHz	Reading Level dBuV	Correct Factor dB	Measurement dBuV	Limit dBuV	Over dB	Detector	Antenna Height cm	Table Degree degree	Comment
1	0.1900	26.48	10.22	36.70	64.04	-27.34	QP			
2	0.1900	14.50	10.22	24.72	54.04	-29.32	AVG			
3	0.3379	27.76	9.80	37.56	59.25	-21.69	QP			
4 *	0.3379	23.50	9.80	33.30	49.25	-15.95	AVG			
5	0.8059	17.67	9.66	27.33	56.00	-28.67	QP			
6	0.8059	12.24	9.66	21.90	46.00	-24.10	AVG			
7	1.1420	14.45	9.73	24.18	56.00	-31.82	QP			
8	1.1420	9.22	9.73	18.95	46.00	-27.05	AVG			
9	2.1580	10.89	9.84	20.73	56.00	-35.27	QP			
10	2.1580	7.71	9.84	17.55	46.00	-28.45	AVG			
11	17.4900	13.72	12.40	26.12	60.00	-33.88	QP			
12	17.4900	9.02	12.40	21.42	50.00	-28.58	AVG			

Test Result: Pass

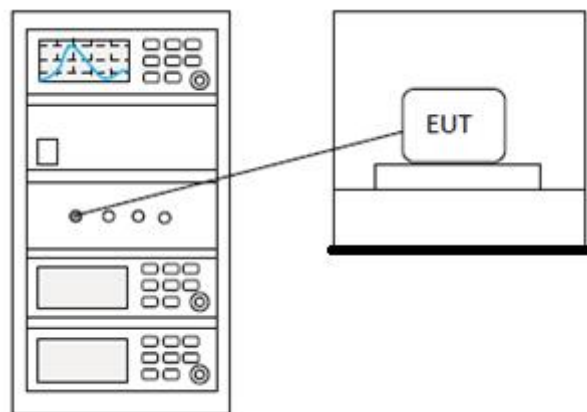
6.3 Conducted peak output Power

Test Standard	47 CFR Part 15, Subpart C 15.247
Test Method	ANSI C63.10 (2013) Section 7.8.5
Test Mode (Pre-Scan)	TX
Test Mode (Final Test)	TX

6.3.1 Limit

Frequency range(MHz)	Output power of the intentional radiator(watt)
902-928	1 for ≥ 50 hopping channels
	0.25 for $25 \leq$ hopping channels < 50
	1 for digital modulation
2400-2483.5	1 for ≥ 75 non-overlapping hopping channels
	0.125 for all other frequency hopping systems
	1 for digital modulation
5725-5850	1 for frequency hopping systems and digital modulation

6.3.2 Test setup



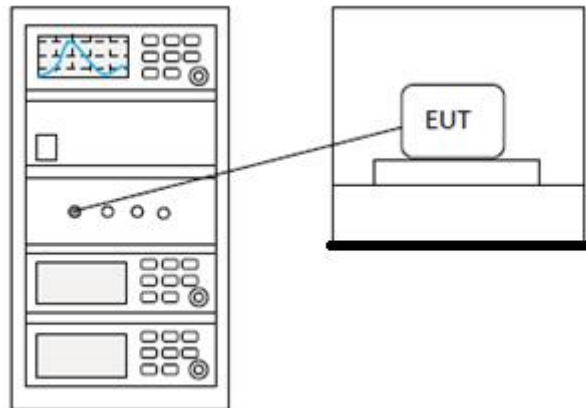
6.3.3 Test data

Pass: Please refer to appendix A for details

6.4 20dB Bandwidth

Test Standard	47 CFR Part 15, Subpart C 15.247
Test Method	ANSI C63.10 (2013) Section 7.8.7
Test Mode (Pre-Scan)	TX
Test Mode (Final Test)	TX
Tester	Charlie
Temperature	25°C
Humidity	60%

6.4.1 Test setup



6.4.2 Test data

Pass: Please refer to appendix A for details

6.5 Conducted Band Edges Measurement

Test Standard	47 CFR Part 15, Subpart C 15.247
Test Method	ANSI C63.10 (2013) Section 7.8.8 & Section 11.13.3.2
Test Mode (Pre-Scan)	TX
Test Mode (Final Test)	TX

6.5.1 Limit

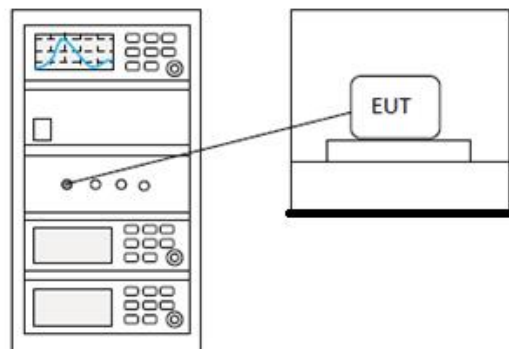
In any 100 kHz bandwidth outside the frequency band in which the spread spectrum or digitally modulated intentional radiator is operating, the radio frequency power that is produced by the intentional radiator shall be at least 20 dB below that in the 100 kHz bandwidth within the band that contains the highest level of the desired power, based on either an RF conducted or a radiated measurement, provided the transmitter demonstrates compliance with the peak conducted power limits.

If the transmitter complies with the conducted power limits based on the use of RMS averaging over a time interval, as permitted under paragraph (b)(3) of this section, the attenuation required under this paragraph shall be 30 dB instead of 20dB.

Attenuation below the general limits specified in §15.209(a) is not required.

In addition, radiated emissions which fall in the restricted bands, as defined in §15.205(a), must also comply with the radiated emission limits specified in §15.209(a) (see §15.205(c)).

6.5.2 Test setup



6.5.3 Test data

Pass: Please refer to appendix A for details

6.6 Conducted spurious emissions

Test Standard	47 CFR Part 15, Subpart C 15.247
Test Method	ANSI C63.10 (2013) Section 7.8.6 & Section 11.11
Test Mode (Pre-Scan)	TX
Test Mode (Final Test)	TX

6.6.1 Limit

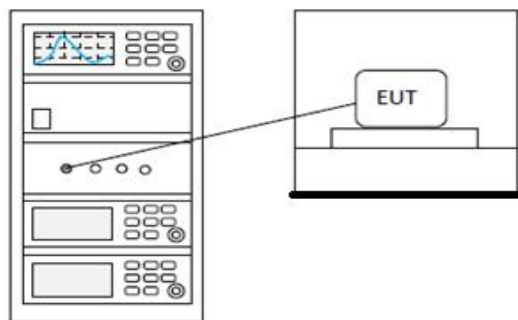
In any 100 kHz bandwidth outside the frequency band in which the spread spectrum or digitally modulated intentional radiator is operating, the radio frequency power that is produced by the intentional radiator shall be at least 20 dB below that in the 100 kHz bandwidth within the band that contains the highest level of the desired power, based on either an RF conducted or a radiated measurement, provided the transmitter demonstrates compliance with the peak conducted power limits.

If the transmitter complies with the conducted power limits based on the use of RMS averaging over a time interval, as permitted under paragraph (b)(3) of this section, the attenuation required under this paragraph shall be 30 dB instead of 20dB.

Attenuation below the general limits specified in §15.209(a) is not required.

In addition, radiated emissions which fall in the restricted bands, as defined in §15.205(a), must also comply with the radiated emission limits specified in §15.209(a) (see §15.205(c)).

6.6.2 Test setup



6.6.3 Test data

Pass: Please refer to appendix A for details