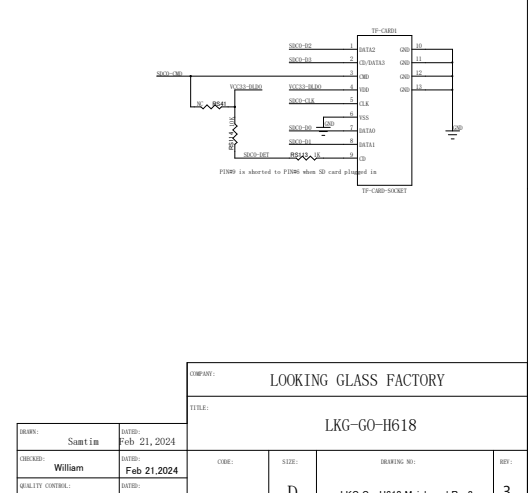
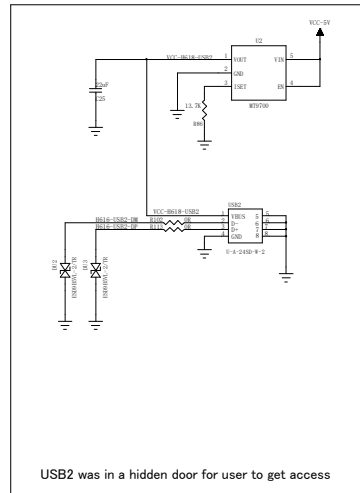
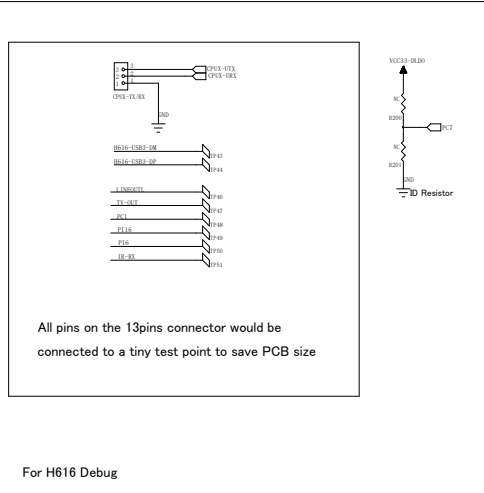
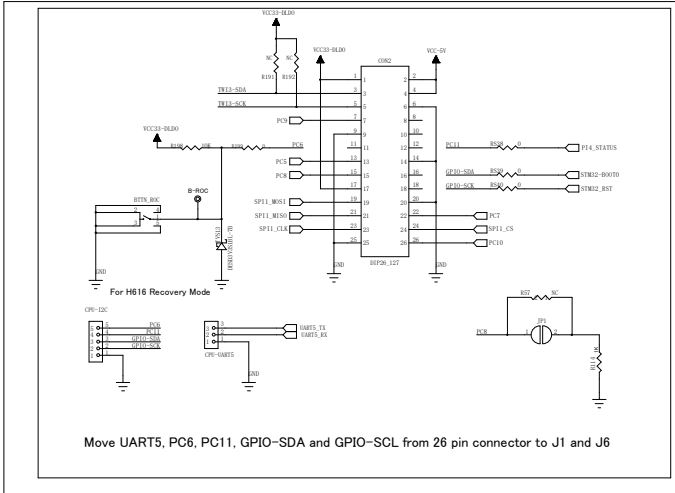
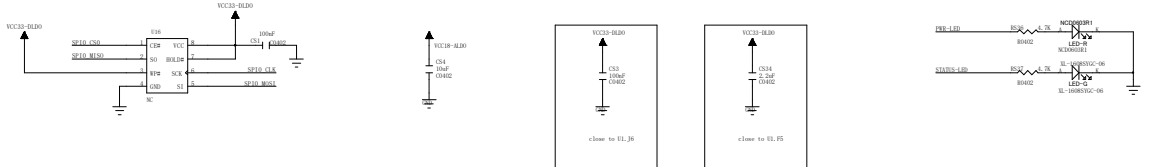
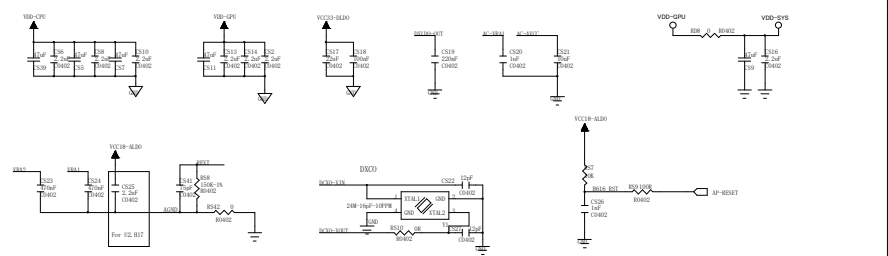
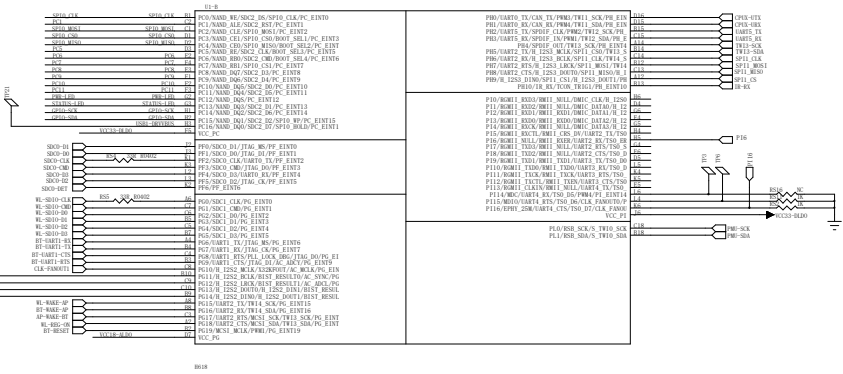
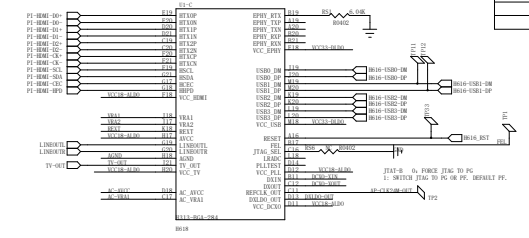


GPIO

GPIO use guide:

1. Note that the voltage of SOC GPIO must matches the external IO voltage.
2. The pull up voltage of the GPIO is selected to correspond to the power field voltage of GPIO.

| REVISION RECORD | | | |
|-----------------|---------|----------|------|
| LR | REV NO. | APPROVED | DATE |
| | | | |
| | | | |



Move UART5, PC6, PC11, GPIO-SDA and GPIO-SCL from 26 pin connector to J1 and J6

All pins on the 13pins connector would be connected to a tiny test point to save PCB size

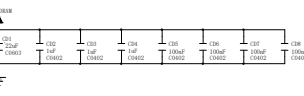
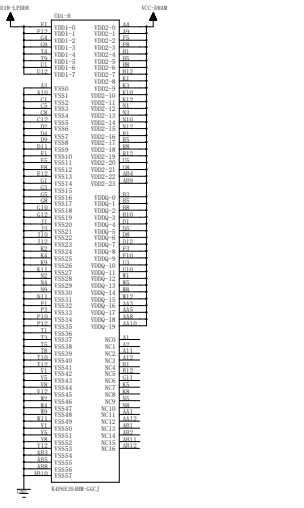
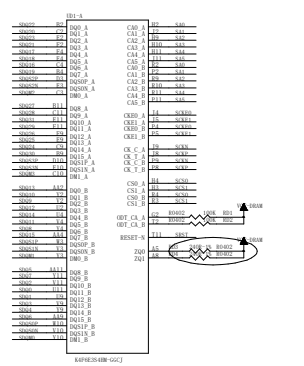
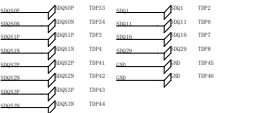
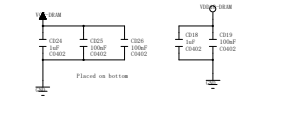
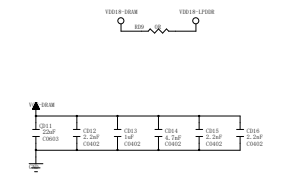
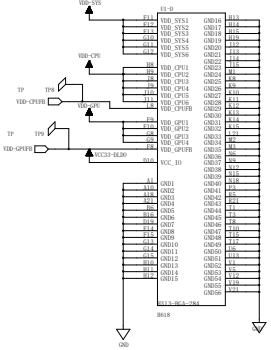
For H616 Debug

USB2 was in a hidden door for user to get access

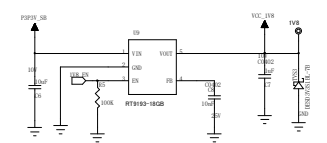
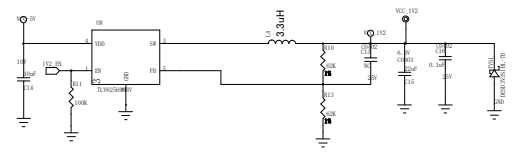
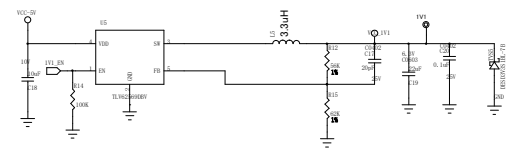
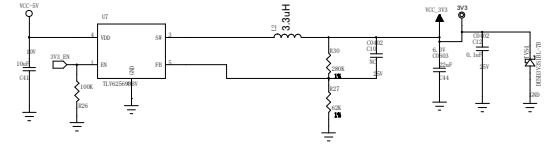
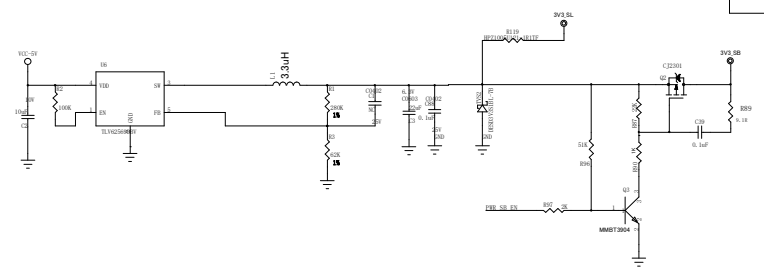
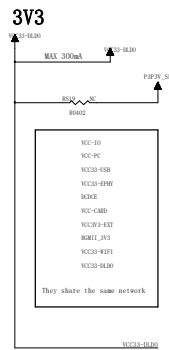
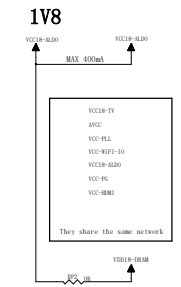
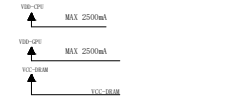
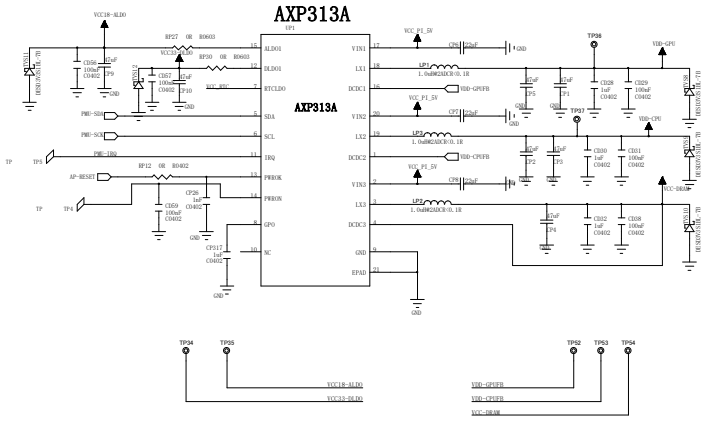
| | | | |
|--------------------------------|--------------------|---------------|----------------------------------|
| FORM NO: LOOKING GLASS FACTORY | | | |
| TITLE: LKG-GO-H618 | | | |
| DESIGN: Sant in | DATE: Feb 21, 2024 | CODE: D | SIZE: LKG Go-H618,Mainboard,Rev3 |
| CHECKED: William | DATE: Feb 21, 2024 | DRAWING NO: 3 | REV: 3 |
| QUALITY CONTROL: Kevin | DATE: Feb 21, 2024 | SCALE: 3# 9 | |

| REVISION RECORD | | | |
|-----------------|----------|----------|------|
| LR | REV. NO. | APPROVED | DATE |
| | | | |
| | | | |
| | | | |

| U1-3 | | U1-2 | | U1-1 | | U1-0 | |
|------|--------|------|--------|------|--------|------|--------|
| Pin | Symbol | Pin | Symbol | Pin | Symbol | Pin | Symbol |
| 1 | 3.3V | 1 | 3.3V | 1 | 3.3V | 1 | 3.3V |
| 2 | 5V | 2 | 5V | 2 | 5V | 2 | 5V |
| 3 | NC | 3 | NC | 3 | NC | 3 | NC |
| 4 | NC | 4 | NC | 4 | NC | 4 | NC |
| 5 | NC | 5 | NC | 5 | NC | 5 | NC |
| 6 | NC | 6 | NC | 6 | NC | 6 | NC |
| 7 | NC | 7 | NC | 7 | NC | 7 | NC |
| 8 | NC | 8 | NC | 8 | NC | 8 | NC |
| 9 | NC | 9 | NC | 9 | NC | 9 | NC |
| 10 | NC | 10 | NC | 10 | NC | 10 | NC |
| 11 | NC | 11 | NC | 11 | NC | 11 | NC |
| 12 | NC | 12 | NC | 12 | NC | 12 | NC |
| 13 | NC | 13 | NC | 13 | NC | 13 | NC |
| 14 | NC | 14 | NC | 14 | NC | 14 | NC |
| 15 | NC | 15 | NC | 15 | NC | 15 | NC |
| 16 | NC | 16 | NC | 16 | NC | 16 | NC |
| 17 | NC | 17 | NC | 17 | NC | 17 | NC |
| 18 | NC | 18 | NC | 18 | NC | 18 | NC |
| 19 | NC | 19 | NC | 19 | NC | 19 | NC |
| 20 | NC | 20 | NC | 20 | NC | 20 | NC |
| 21 | NC | 21 | NC | 21 | NC | 21 | NC |
| 22 | NC | 22 | NC | 22 | NC | 22 | NC |
| 23 | NC | 23 | NC | 23 | NC | 23 | NC |
| 24 | NC | 24 | NC | 24 | NC | 24 | NC |
| 25 | NC | 25 | NC | 25 | NC | 25 | NC |
| 26 | NC | 26 | NC | 26 | NC | 26 | NC |
| 27 | NC | 27 | NC | 27 | NC | 27 | NC |
| 28 | NC | 28 | NC | 28 | NC | 28 | NC |
| 29 | NC | 29 | NC | 29 | NC | 29 | NC |
| 30 | NC | 30 | NC | 30 | NC | 30 | NC |
| 31 | NC | 31 | NC | 31 | NC | 31 | NC |
| 32 | NC | 32 | NC | 32 | NC | 32 | NC |
| 33 | NC | 33 | NC | 33 | NC | 33 | NC |
| 34 | NC | 34 | NC | 34 | NC | 34 | NC |
| 35 | NC | 35 | NC | 35 | NC | 35 | NC |
| 36 | NC | 36 | NC | 36 | NC | 36 | NC |
| 37 | NC | 37 | NC | 37 | NC | 37 | NC |
| 38 | NC | 38 | NC | 38 | NC | 38 | NC |
| 39 | NC | 39 | NC | 39 | NC | 39 | NC |
| 40 | NC | 40 | NC | 40 | NC | 40 | NC |
| 41 | NC | 41 | NC | 41 | NC | 41 | NC |
| 42 | NC | 42 | NC | 42 | NC | 42 | NC |
| 43 | NC | 43 | NC | 43 | NC | 43 | NC |
| 44 | NC | 44 | NC | 44 | NC | 44 | NC |
| 45 | NC | 45 | NC | 45 | NC | 45 | NC |
| 46 | NC | 46 | NC | 46 | NC | 46 | NC |
| 47 | NC | 47 | NC | 47 | NC | 47 | NC |
| 48 | NC | 48 | NC | 48 | NC | 48 | NC |
| 49 | NC | 49 | NC | 49 | NC | 49 | NC |
| 50 | NC | 50 | NC | 50 | NC | 50 | NC |
| 51 | NC | 51 | NC | 51 | NC | 51 | NC |
| 52 | NC | 52 | NC | 52 | NC | 52 | NC |
| 53 | NC | 53 | NC | 53 | NC | 53 | NC |
| 54 | NC | 54 | NC | 54 | NC | 54 | NC |
| 55 | NC | 55 | NC | 55 | NC | 55 | NC |
| 56 | NC | 56 | NC | 56 | NC | 56 | NC |
| 57 | NC | 57 | NC | 57 | NC | 57 | NC |
| 58 | NC | 58 | NC | 58 | NC | 58 | NC |
| 59 | NC | 59 | NC | 59 | NC | 59 | NC |
| 60 | NC | 60 | NC | 60 | NC | 60 | NC |
| 61 | NC | 61 | NC | 61 | NC | 61 | NC |
| 62 | NC | 62 | NC | 62 | NC | 62 | NC |
| 63 | NC | 63 | NC | 63 | NC | 63 | NC |
| 64 | NC | 64 | NC | 64 | NC | 64 | NC |
| 65 | NC | 65 | NC | 65 | NC | 65 | NC |
| 66 | NC | 66 | NC | 66 | NC | 66 | NC |
| 67 | NC | 67 | NC | 67 | NC | 67 | NC |
| 68 | NC | 68 | NC | 68 | NC | 68 | NC |
| 69 | NC | 69 | NC | 69 | NC | 69 | NC |
| 70 | NC | 70 | NC | 70 | NC | 70 | NC |
| 71 | NC | 71 | NC | 71 | NC | 71 | NC |
| 72 | NC | 72 | NC | 72 | NC | 72 | NC |
| 73 | NC | 73 | NC | 73 | NC | 73 | NC |
| 74 | NC | 74 | NC | 74 | NC | 74 | NC |
| 75 | NC | 75 | NC | 75 | NC | 75 | NC |
| 76 | NC | 76 | NC | 76 | NC | 76 | NC |
| 77 | NC | 77 | NC | 77 | NC | 77 | NC |
| 78 | NC | 78 | NC | 78 | NC | 78 | NC |
| 79 | NC | 79 | NC | 79 | NC | 79 | NC |
| 80 | NC | 80 | NC | 80 | NC | 80 | NC |
| 81 | NC | 81 | NC | 81 | NC | 81 | NC |
| 82 | NC | 82 | NC | 82 | NC | 82 | NC |
| 83 | NC | 83 | NC | 83 | NC | 83 | NC |
| 84 | NC | 84 | NC | 84 | NC | 84 | NC |
| 85 | NC | 85 | NC | 85 | NC | 85 | NC |
| 86 | NC | 86 | NC | 86 | NC | 86 | NC |
| 87 | NC | 87 | NC | 87 | NC | 87 | NC |
| 88 | NC | 88 | NC | 88 | NC | 88 | NC |
| 89 | NC | 89 | NC | 89 | NC | 89 | NC |
| 90 | NC | 90 | NC | 90 | NC | 90 | NC |
| 91 | NC | 91 | NC | 91 | NC | 91 | NC |
| 92 | NC | 92 | NC | 92 | NC | 92 | NC |
| 93 | NC | 93 | NC | 93 | NC | 93 | NC |
| 94 | NC | 94 | NC | 94 | NC | 94 | NC |
| 95 | NC | 95 | NC | 95 | NC | 95 | NC |
| 96 | NC | 96 | NC | 96 | NC | 96 | NC |
| 97 | NC | 97 | NC | 97 | NC | 97 | NC |
| 98 | NC | 98 | NC | 98 | NC | 98 | NC |
| 99 | NC | 99 | NC | 99 | NC | 99 | NC |
| 100 | NC | 100 | NC | 100 | NC | 100 | NC |



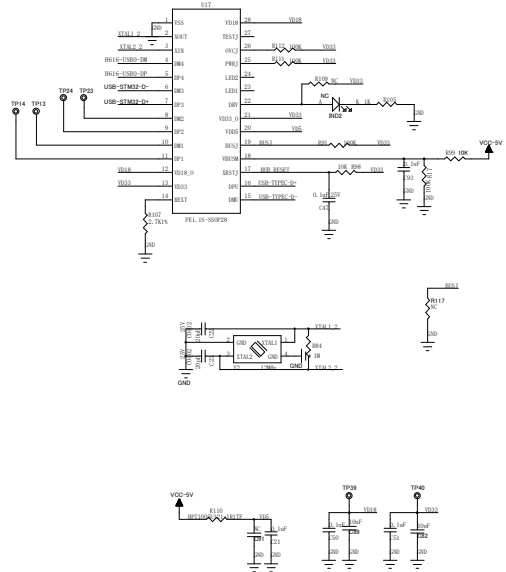
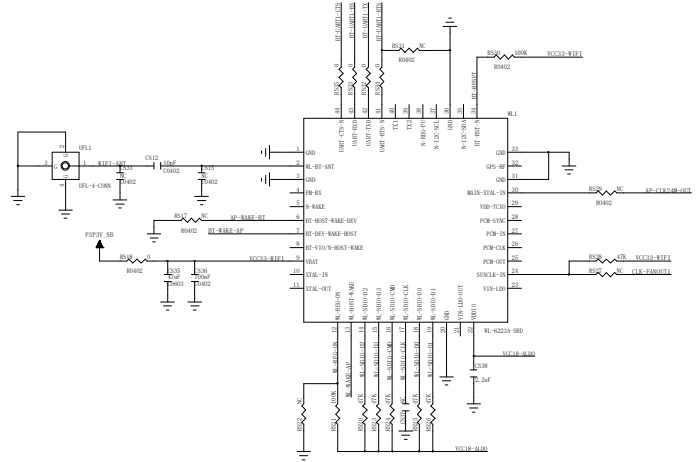
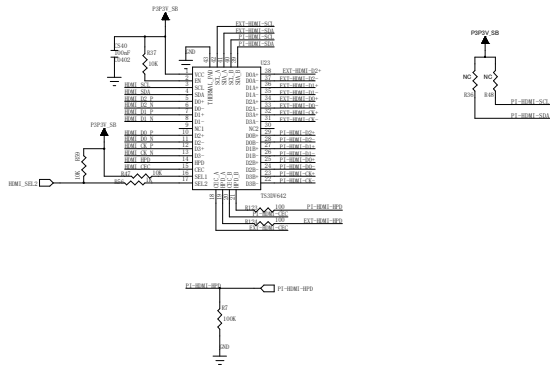
| REV 1/15/18 R03/00 | | | |
|--------------------|--------|----------|------|
| LR | RD No. | APPROVED | DATE |
| | | | |
| | | | |
| | | | |



| | | | | | | | |
|--------------------|--|---------|-------|--|--------|---------------|--|
| DRAWN: Sant in | | | | DATE: Feb 21, 2024 | | | |
| CHECKED: William | | | | DATE: Feb 21, 2024 | | | |
| QUALITY CONTROL: | | | | DATE: | | | |
| RELEASED: Kevin | | | | DATE: Feb 21, 2024 | | | |
| TITLE: LKG-GO-H618 | | CODE: D | SIZE: | DRAWING NO: LKG Go-H618.Mainboard_Rev3 | REV: 3 | SHEET: 5 of 9 | |

| REVISION RECORD | | | |
|-----------------|----------|----------|------|
| LR | REV. NO. | APPROVED | DATE |
| | | | |
| | | | |
| | | | |

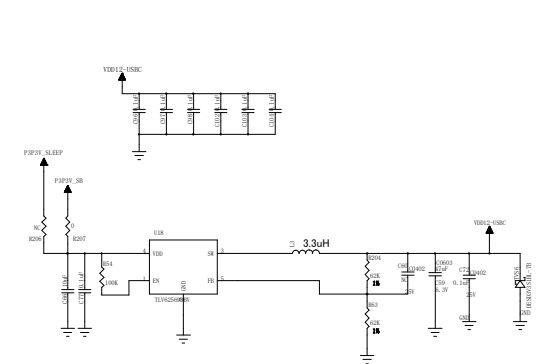
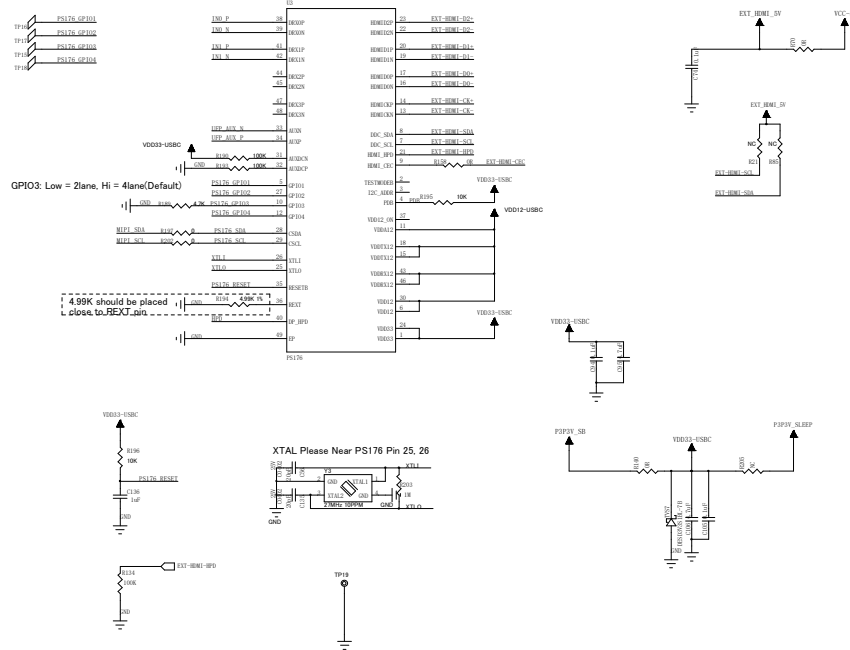
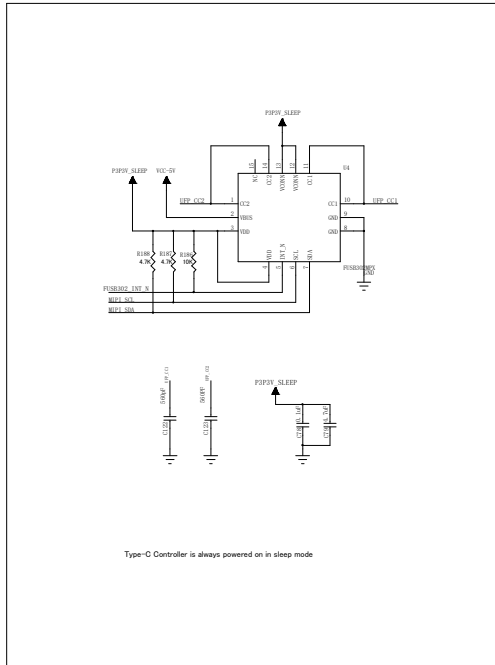
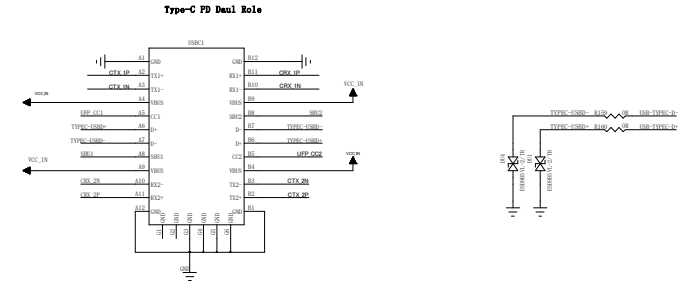
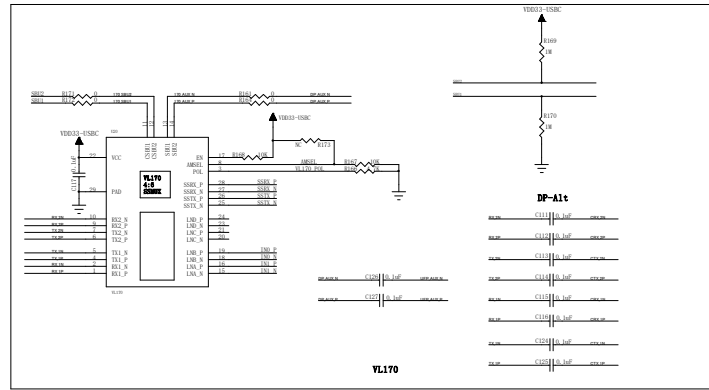
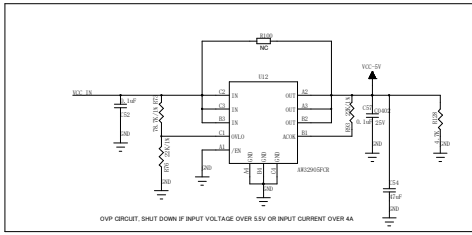
- PH-HEMI-HFO
- EXT-HEMI-HFO
- HEMI_HFO
- HEMI_SDA
- HEMI_SCL
- HEMI_LSC
- HEMI_RX_N
- HEMI_RX_P
- HEMI_TX_N
- HEMI_TX_P
- HEMI_TX_N
- HEMI_TX_P
- HEMI_TX_N
- HEMI_TX_P
- HEMI_TX_N
- HEMI_TX_P
- HEMI_TX_N
- HEMI_TX_P



| | | | | | | | |
|------------------------|--|--|--|--------------------|--|--|--|
| DRAWN: Sant in | | | | DATE: Feb 21, 2024 | | | |
| CHECKED: William | | | | DATE: Feb 21, 2024 | | | |
| QUALITY CONTROL: Kevin | | | | DATE: Feb 21, 2024 | | | |
| RELEASED: | | | | SCALE: | | | |

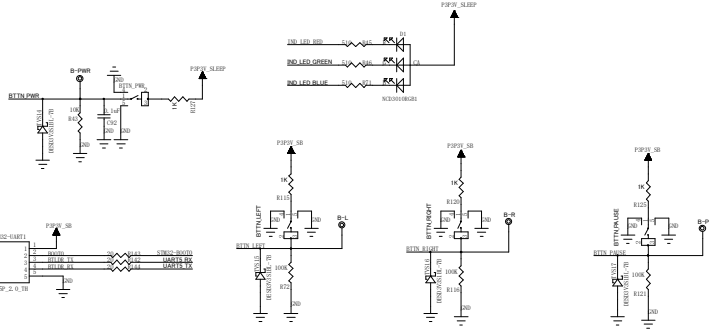
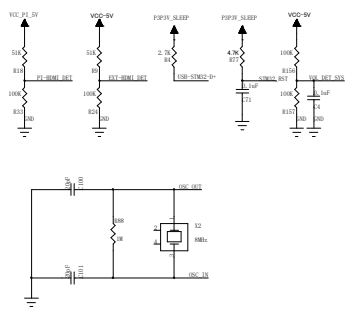
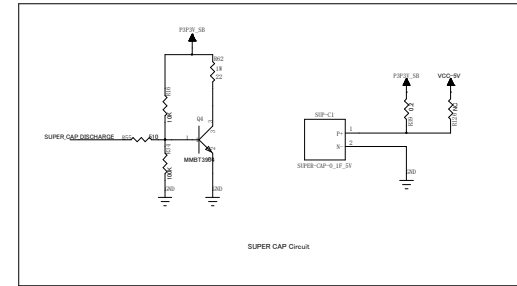
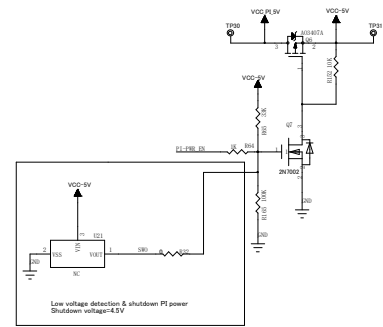
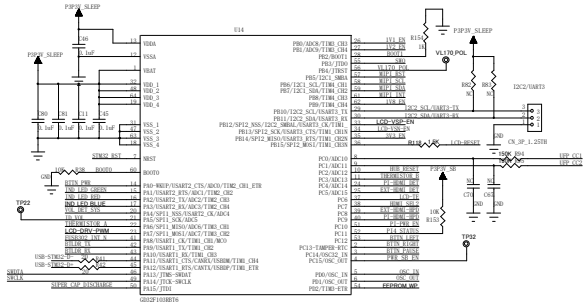
| | | | |
|--------------------------------|-------|--|---------------|
| SUMMARY: LOOKING GLASS FACTORY | | | |
| TITLE: LKG-GO-H618 | | | |
| CODE: D | SIZE: | DRAWING NO: LKG-GO-H618_Mainboard_Rev3 | REV: 3 |
| SCALE: | | | SHEET: 6 of 9 |

| REVISION HISTORY | | | |
|------------------|---------|----------|------|
| LR | REV NO. | APPROVED | DATE |
| | | | |
| | | | |
| | | | |



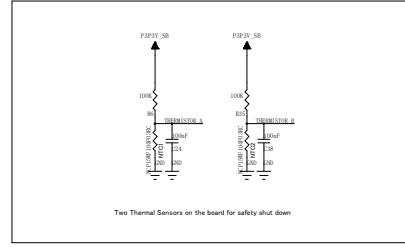
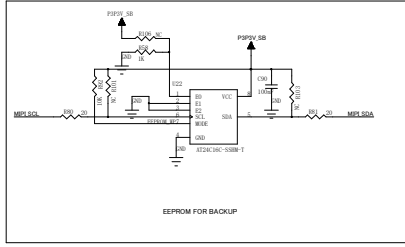
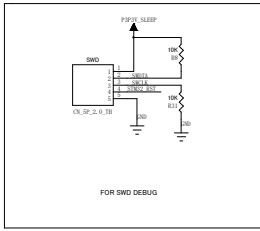
| | | | | | | | |
|------------------------|--|---------|--|--------------------|--|--|--|
| DRAWN: Santin | | | | DATE: Feb 21, 2024 | | | |
| CHECKED: William | | | | DATE: Feb 21, 2024 | | | |
| QUALITY CONTROL: Kevin | | | | DATE: Feb 21, 2024 | | | |
| RELEASED: Kevin | | | | DATE: Feb 21, 2024 | | | |
| TITLE: LKG-GO-H618 | | CODE: D | | SIZE: 7 of 9 | | DRAWING NO: LKG Go-H618 Mainboard_Rev3 | |
| REVISION: 3 | | SCALE: | | SHEET: 7 of 9 | | REV: 3 | |

| REVISED | | | |
|---------|---------|----------|------|
| LR | REV NO. | APPROVED | DATE |
| | | | |
| | | | |
| | | | |



ID VOLTAGE

| Model | R44 |
|-------|------|
| 5.5" | 1K |
| 5.98" | 1K |
| 6.0" | 4.7K |
| 7.9" | 10K |



| | | | |
|------------------------|--|--------------------|--|
| DRAWN: Sant in | | DATE: Feb 21, 2024 | |
| CHECKED: William | | DATE: Feb 21, 2024 | |
| QUALITY CONTROL: Kevin | | DATE: Feb 21, 2024 | |
| RELEASED: | | DATE: | |

| | | | |
|-------------------------|-------|--|--------|
| DRAWING NO: LKG-GO-H618 | | | |
| CODE: D | SIZE: | DRAWING NO: LKG Go-H618,Mainboard,Rev3 | REV: 3 |
| SCALE: | | SHEET: 8 of 9 | |

