



Shenzhen DBT Telecommunication Technology CO.,LTD Antenna Test Report

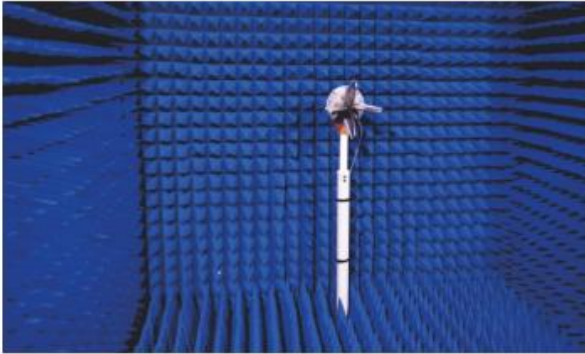
Project : C208

Antenna model : WiFi FPC antenna

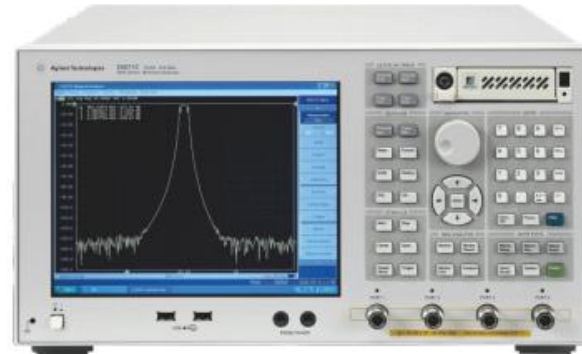
Add:

Rm505, 8th building, Yungu 2nd period, pingshan No.1 Road, Xili Town, Nanshan District, ShenZhen , China

1. Test equipment



OTA-800
Model : ETS



5071C
Model : Agilent



8960
Model : Agilent

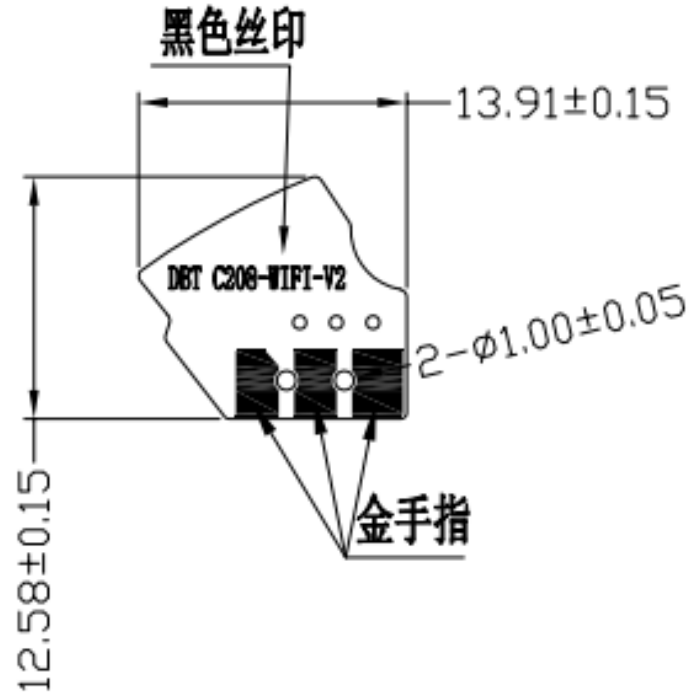


CMW500
Model : ROHDE&SCHWAR

2: Product specifications

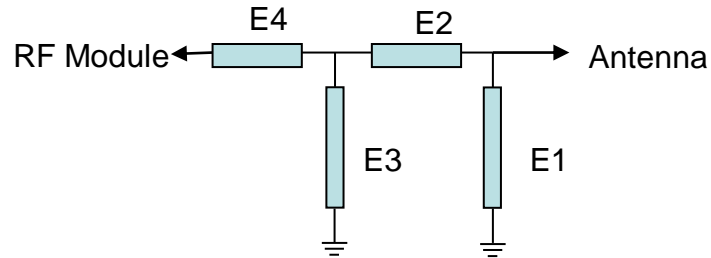
DIMENSIONS:

Unit: (mm)



3. Matching circuit

Matching circuit not modified



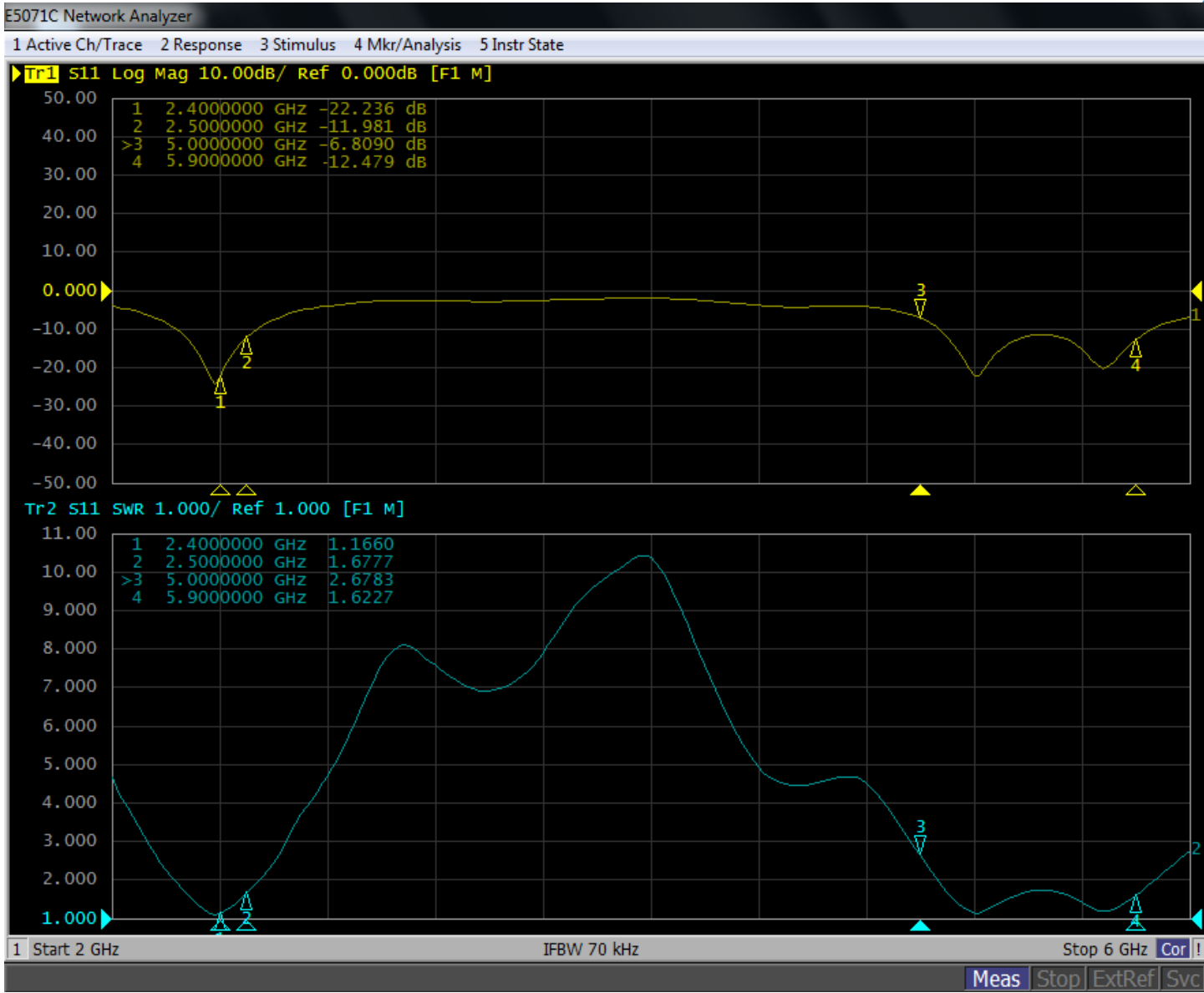
Element	WIFI		
E1(0201)	N/A		
E2(0201)	0Ω		
E3(0201)	N/A		
E4(0201)	0Ω		

4: Electrical Parameter



Electrical Parameter		
Frequency (MHz)	2400~2500	5000~5900
Peak Gain (dBi)	1.44	1.64
Efficiency (%)	64.55%	48.84%
VSWR	<1.7	<2.7
Return Loss (dB)	<-11	<-7
Polarization	Linear	Linear
Impedance	50Ω	50Ω
Maximum Input Power	10W	10W
Material	FPC Antenna	FPC Antenna
Operation Temperature	-40° C ~ +85° C	-40° C ~ +85° C
Storage Temperature	-40° C ~ +85° C	-40° C ~ +85° C

5. S11 parameter

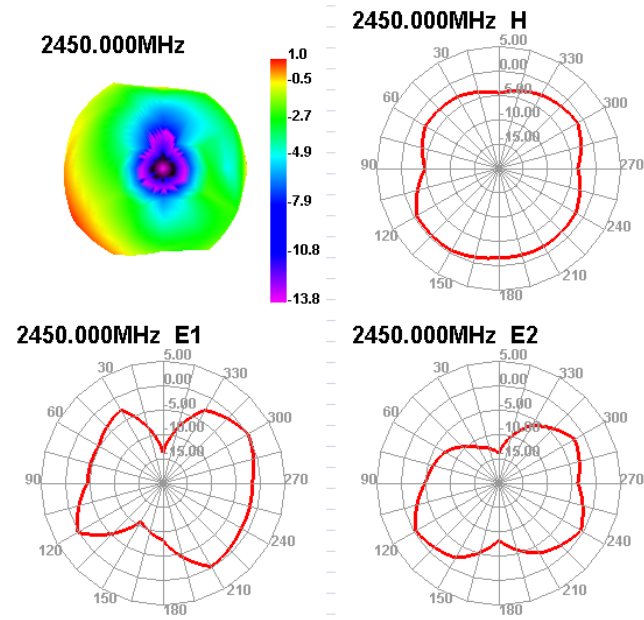


Return Loss:

VSWR :

6. Antenna Efficiency/Gain/Radiation pattern 2400~2500MHz :

Freq (MHz)	Effi (%)	Gain (dBi)
2400	56.11	0.83
2410	53.14	0.45
2420	55.65	0.62
2430	58.82	0.68
2440	64.55	1.03
2450	63.76	0.95
2460	60.08	0.71
2470	58.55	0.82
2480	62.42	1.21
2490	58.76	1.15
2500	62.63	1.44



7. Antenna Efficiency/Gain/Radiation pattern 5000~5900MHz :

Freq (MHz)	Effi (%)	Gain (dBi)
5000	33.77	0.37
5100	38.77	0.7
5200	45.96	1.64
5300	43.87	0.77
5400	41.49	0.61
5500	46.14	1.2
5600	48.84	1.53
5700	42.11	0.79
5800	37.94	-0.5
5900	36.38	-0.76

