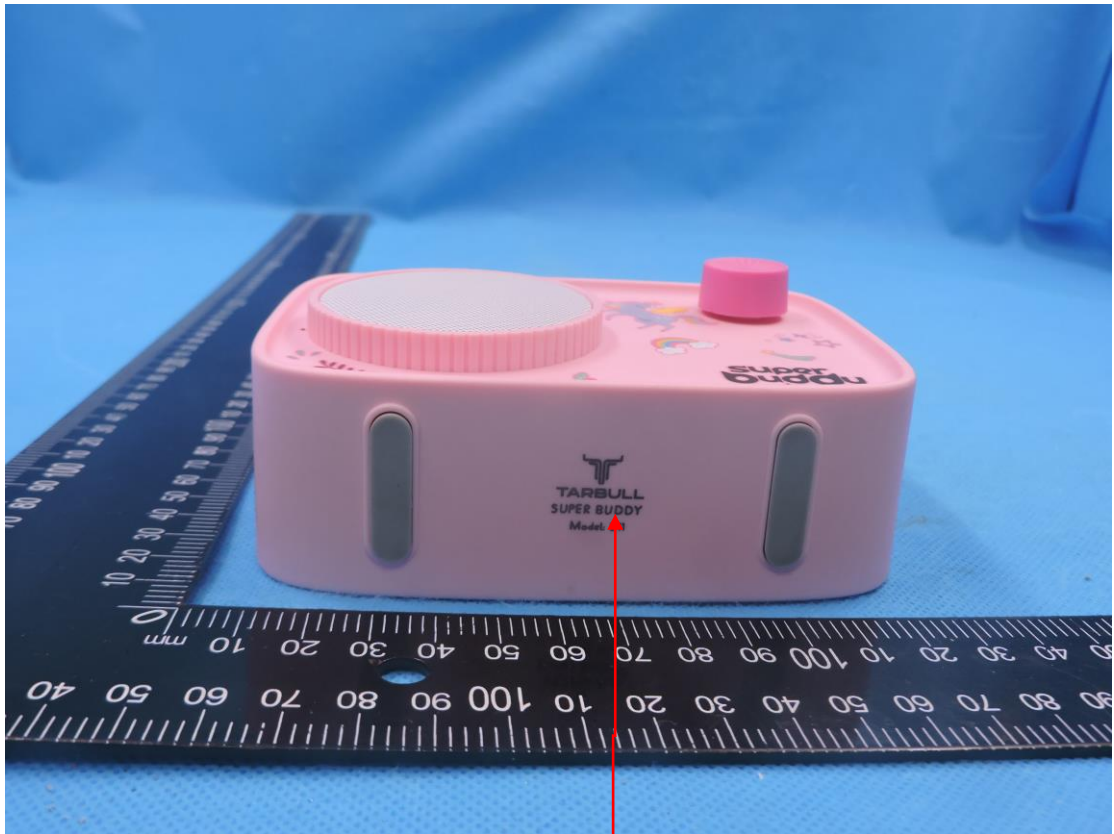








FCC Label





FCCID : 2BKAX-W11  
Model Number: W11, Power Input: DC5V, 1A  
Certified for FCC ID, FCC SDO, UL62368,  
ASTM F963, and CPSIA 6500 compliance.  
MADE IN CHINA



FCCID : 2BKAX-W11  
Model Number: W11, Power Input: DC5V, 1A  
Certified for FCC ID, FCC SDO, UL62368,  
ASTM F963, and CPSIA 6500 compliance.  
MADE IN CHINA

50mm\*40mm