

We statement that All measurements were performed radiated and therefore additional antenna gain documentation is not required.

MI3 RX 2.45 GHz Antenna

Layout and Implementation

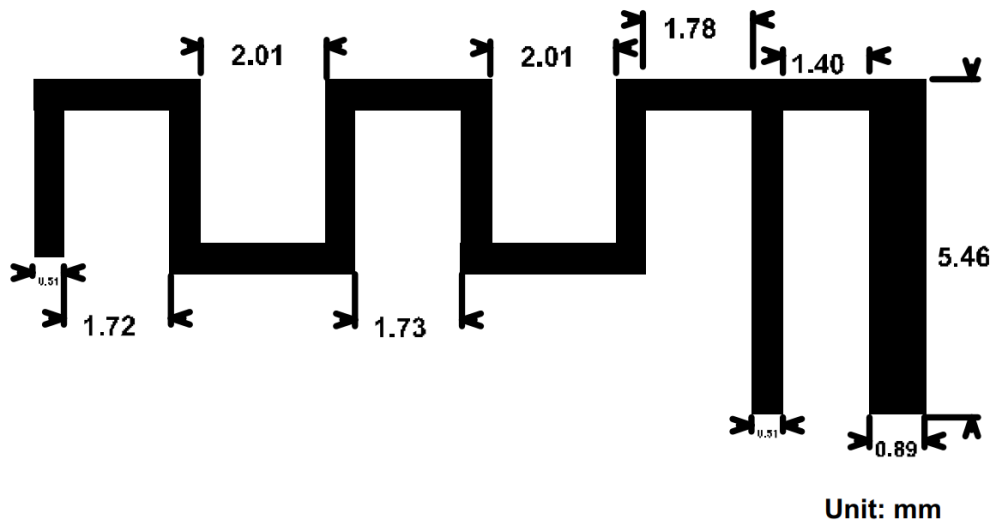


Figure 1: Antenna Dimensions

PCB Dimensions

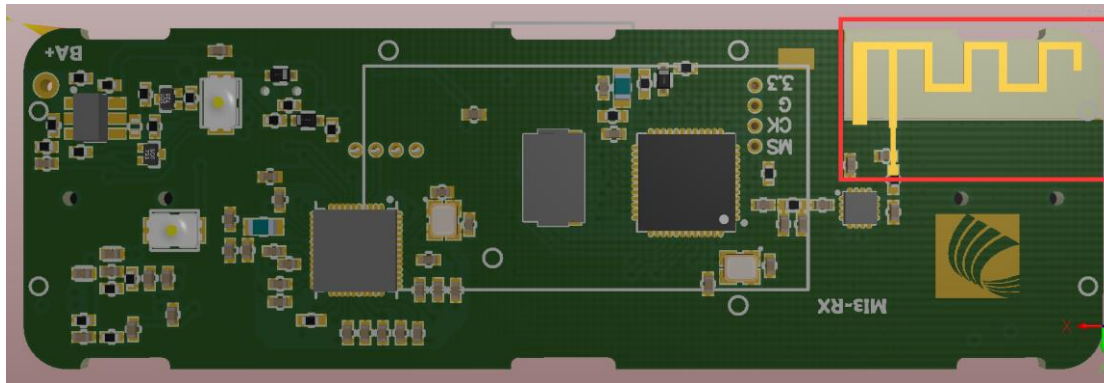


Figure 2: 3D PCB

Test conditions and methods

The testing instrument used is: HP 85046A

Test method: To disassemble the surrounding area, connect "TEST" and "GND" for testing

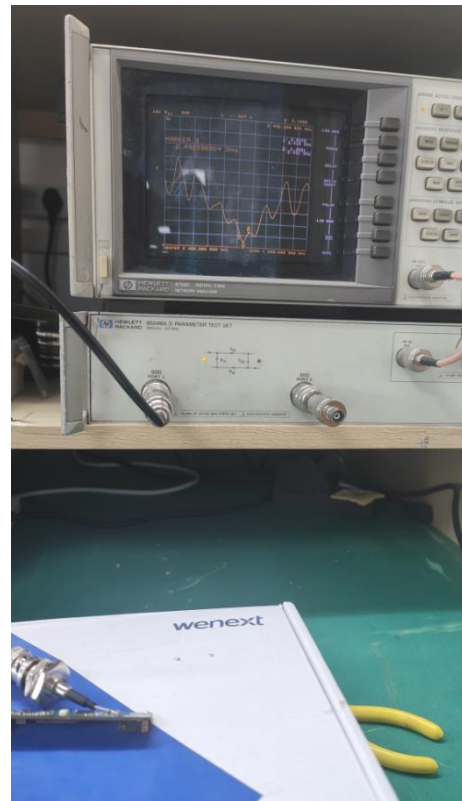
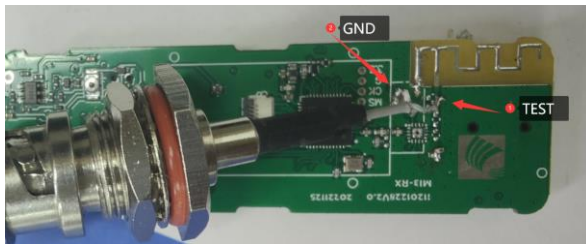
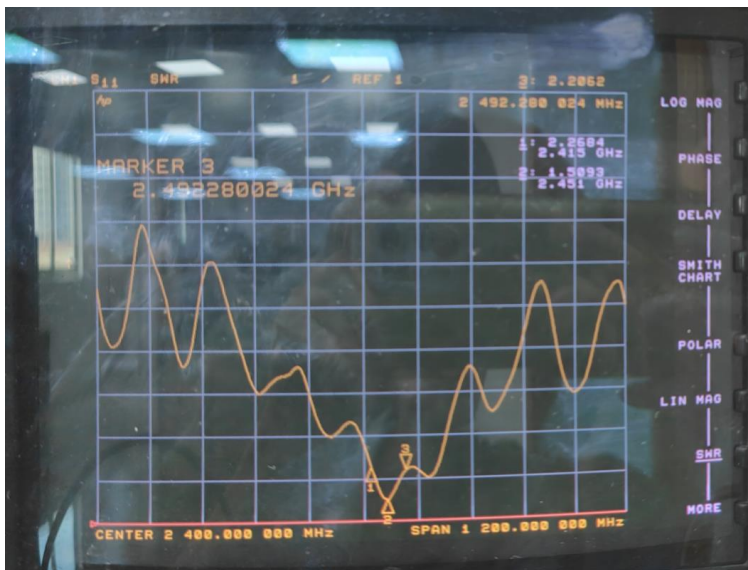


Figure 3: Connection method

Quick Reference Data



Item	Specification
Impedance	50 Ω
type	PCB
VSWR	2.0 (max)
Peak Gain (typ.)	0.5 dBi
range	2.4G-2.50G
Center Frequency	2.45 GH

Figure 4: Testing Parameters