



## 2.4GHz WIFI RF

PCB Onboard Antenna

### Applications

\*Bluetooth / Wireless LAN/Home RF

\*ISM band 2.4GHz Applications

### Specifications

Frequency: 2400MHz--2500MHz

Application equipment: 2.4G IEEE802.11b/g Equipment

Gain: -3.74dBi

Radiation type: omni-directional

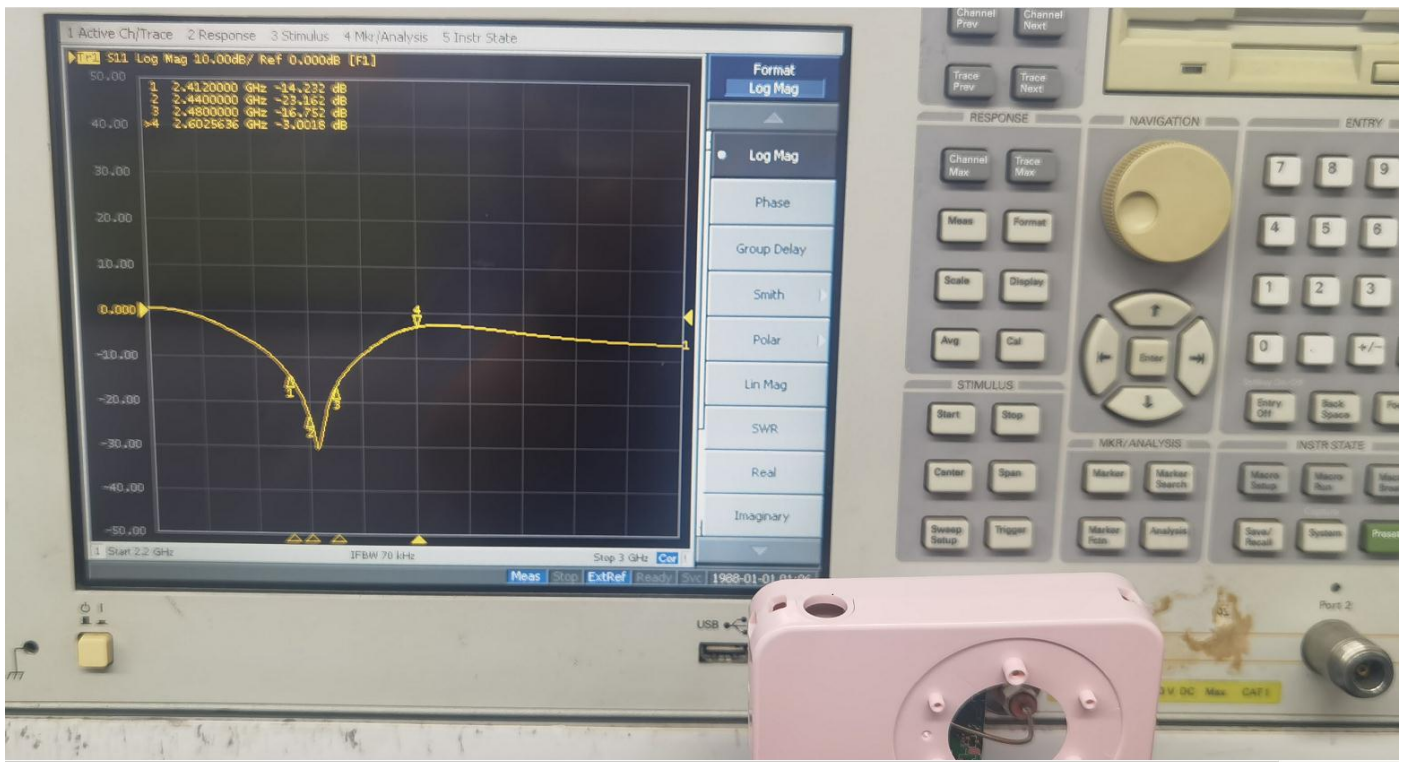
Impedance: 50 Ohm

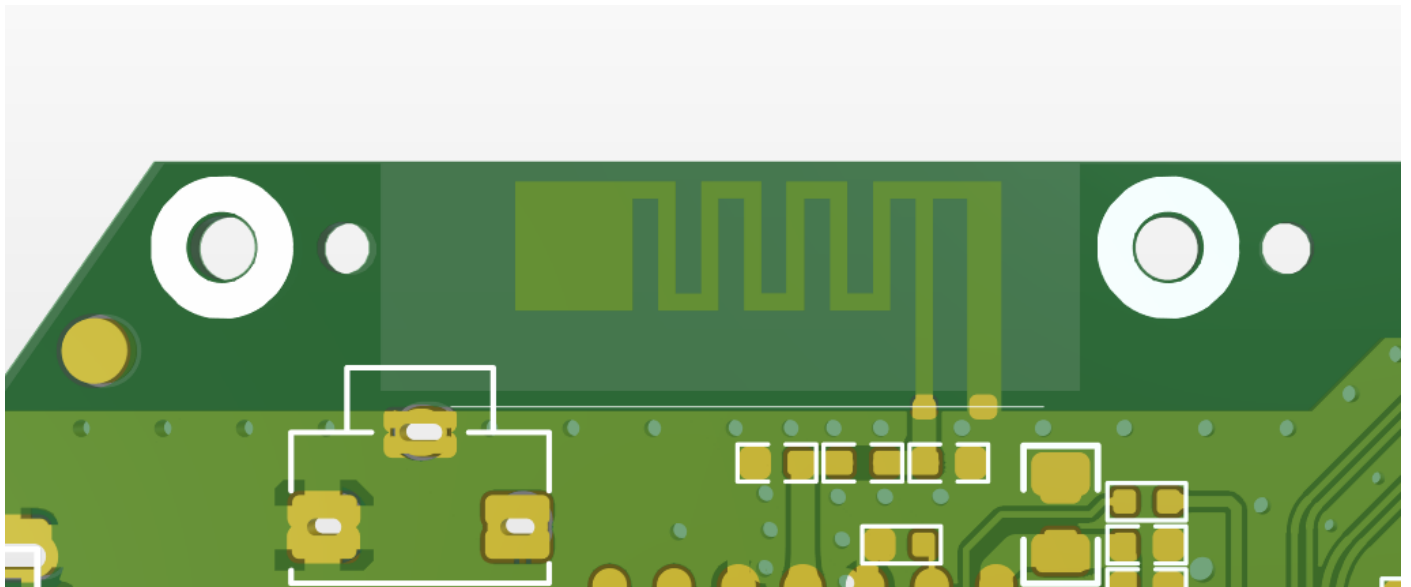
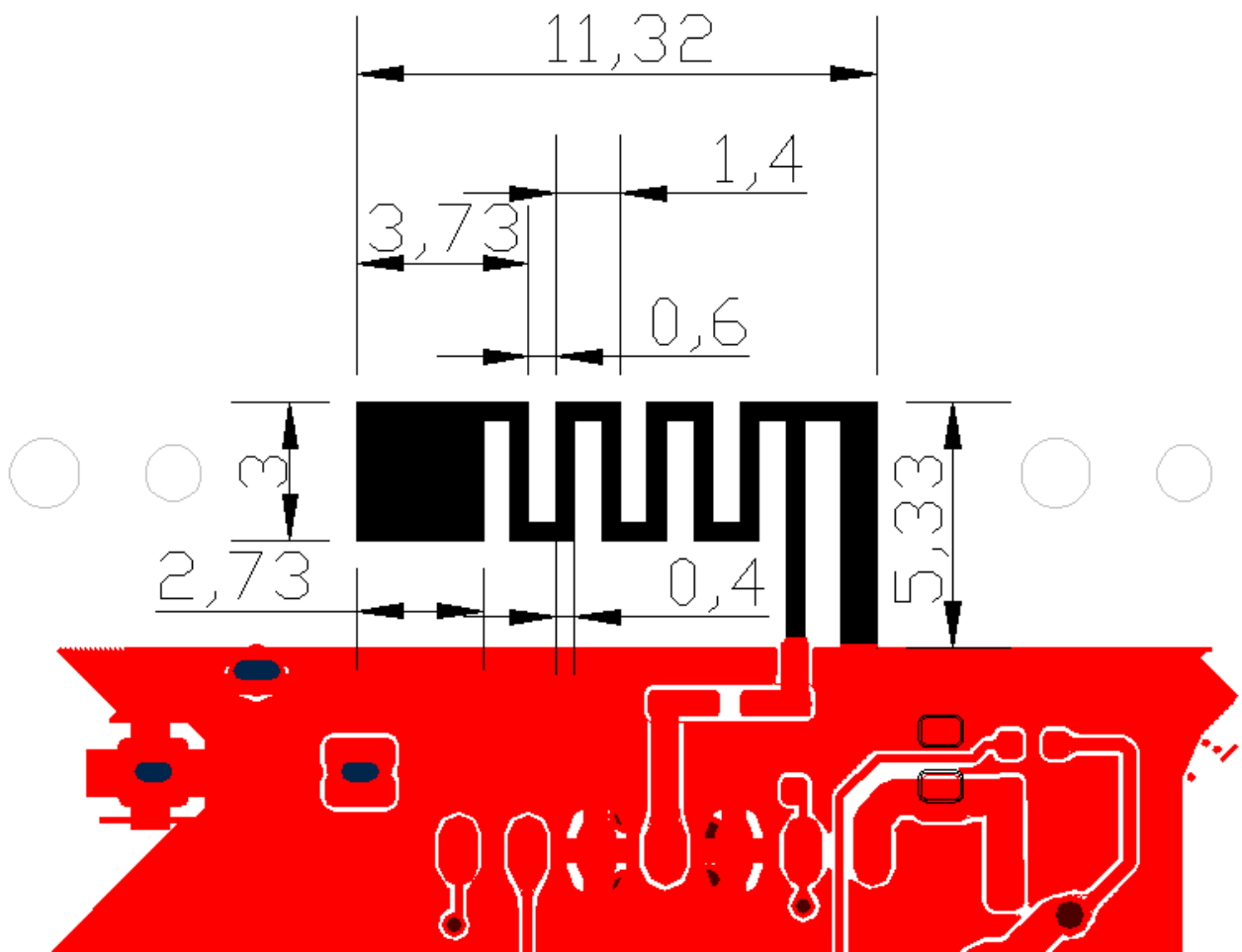
VSWR: <2.0

Polarization mode: Vertical and horizontal

Length: 30mm (11.3x5.2mm)

Operating Temperature Range: -40--+85°

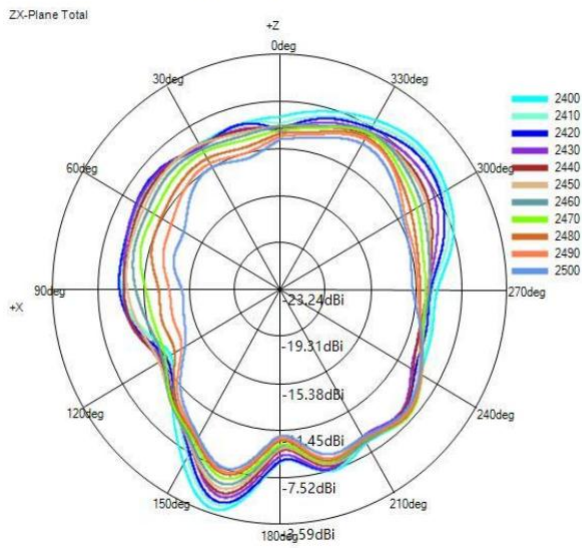




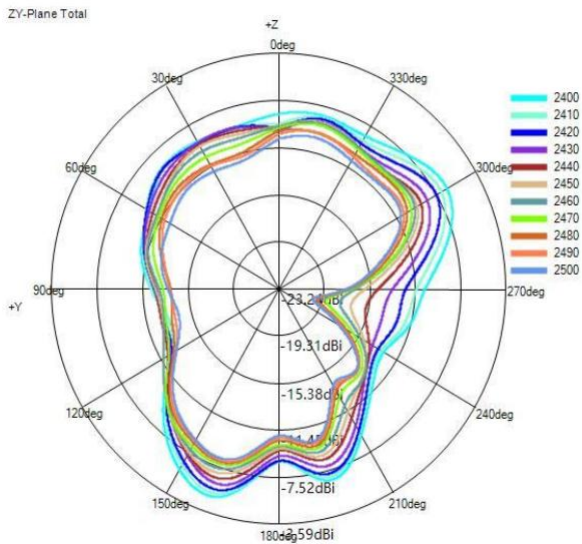


Frequency/MHz	2400	2410	2420	2430	2440	2450	2460	2470	2480	2490	2500
Peak Gain/dBi	-3.74	-4.11	-4.58	-5.17	-5.40	-5.46	-5.48	-5.76	-6.02	-6.04	-6.08
Efficiency/%	12.92	12.10	11.54	10.64	10.18	10.00	9.60	8.98	8.16	7.68	7.23

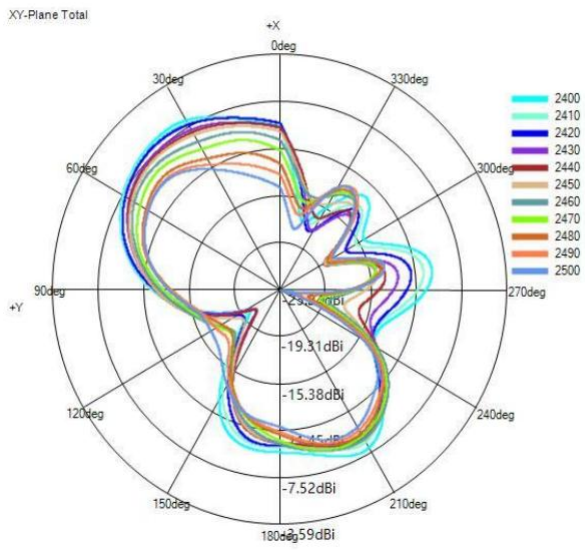
(1) X-Z Plane(unit: dBi):



(2) Y-Z Plane(unit: dBi):



(3) X-Y Plane(unit:dBi):



(4) Typical Free Space 3D Radiation Pattern at 2400MHz(unit:dBi):

