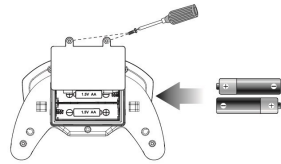
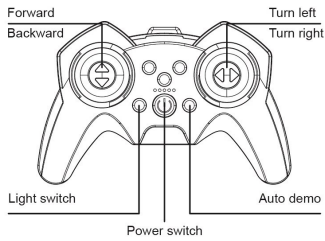


REMOTE CONTROL FUNCTION



1. Remove the battery cover from the back of controller.
2. Install 2 "AA" batteries into the controller, make sure to install batteries to their correct polarity.
Do not mix old and new batteries or battery types.
3. Replace the battery cover

CAR CHARGING INSTRUCTIONS

1. Open the battery cover on the back of the remote control car and remove the battery pack from the battery compartment (Fig.1).
2. Connect the USB charging cable to the corresponding socket. When charging, the LED light is always on. When the charging is finished, the LED light is off (Fig.2).
3. Install the battery pack into the battery case, connect it, replace the battery cover, and secure it with a screwdriver.

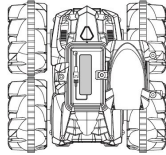


Fig.1

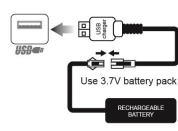
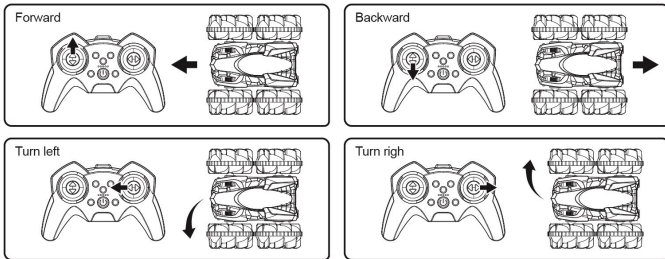
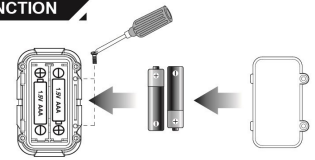
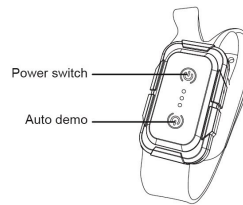


Fig.2

BASIC OPERATION METHOD



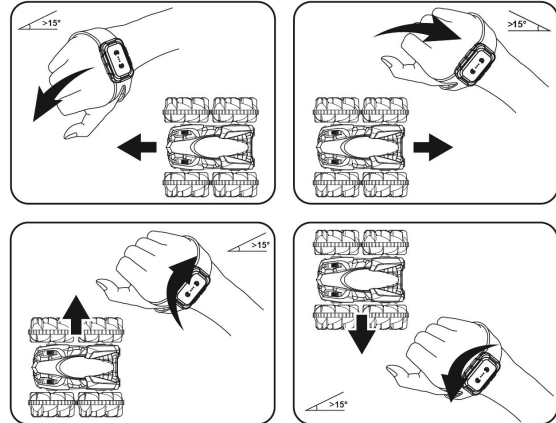
GESTURE CONTROLLER FUNCTION



Gesture Controller Use the 2 1.5 "AAA" battery, open the battery cover on the back of the controller, and according to the electrode instructions correctly load the battery, and then cover the battery cover.

GESTURE CONTROLLER BATTERY REPLACEMENT

Hold the gesture controller horizontally as far as possible, and slowly tilt forward/back/left/right (the angle must be greater than 15 degrees) to control the forward/backward/left/right row of the remote control car.



FCC Statement

This device complies with Part 15 of the FCC Rules. Operation is subject to the following two conditions: (1) this device may not cause harmful interference, and (2) this device must accept any interference received, including interference that may cause undesired operation.

Changes or modifications to this unit not expressly approved by the party responsible for compliance could void the user's authority to operate the equipment.

NOTE: This equipment has been tested and found to comply with the limits for a Class B digital device, pursuant to Part 15 of the FCC Rules. These limits are designed to provide reasonable protection against harmful interference in a residential installation. This equipment generates uses and can radiate radio frequency energy and, if not installed and used in accordance with the instructions, may cause harmful interference to radio communications. However, there is no guarantee that interference will not occur in a particular installation. If this equipment does cause harmful interference to radio or television reception, which can be determined by turning the equipment off and on, the user is encouraged to try to correct the interference by one or more of the following measures:

- Reorient or relocate the receiving antenna.
- Increase the separation between the equipment and receiver.
- Connect the equipment into an outlet on a circuit different from that to which the receiver is connected.
- Consult the dealer or an experienced radio/TV technician for help.

This device and its antenna(s) must not be co-located or operation in conjunction with any other antenna or transmitter.

Radiation Exposure Statement

The device has been evaluated to meet general RF exposure requirement in portable exposure condition without restriction.