

1. Antenna Description:

Antenna type	PIFA antenna
Model	X30Pro-WLAN
Frequency range	2400-2500MHz, 5180-5240MHz, 5745-5825MHz
Manufacturer	Shenzhen Xin times chain technology Co., LTD
ANT Peak Gain	2400-2500MHz: 0.60 dBi; 5180-5240MHz: 0.72dBi 5745-5825MHz: 0.88dBi

2. Antenna Photo:

Length :25.00mm
Width:17.01mm



3. Test Equipment & Conditions

3.1 Test instrument

VSWR is tested using Agilent E5071B connected to a hand mechanism, and the status is free space.

3.2 Test environment and methods

Dark room specifications: ETS-743

TD-SCDMA test equipment: StarPoint SP6010/Agilent 8960

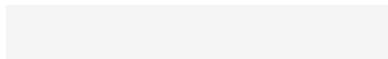
LTE-TDD/FDD-SCDMA test equipment: StarPoint SP8011/CMW500

WCDMA/GSM/CDMA test equipment: Agilent 8960

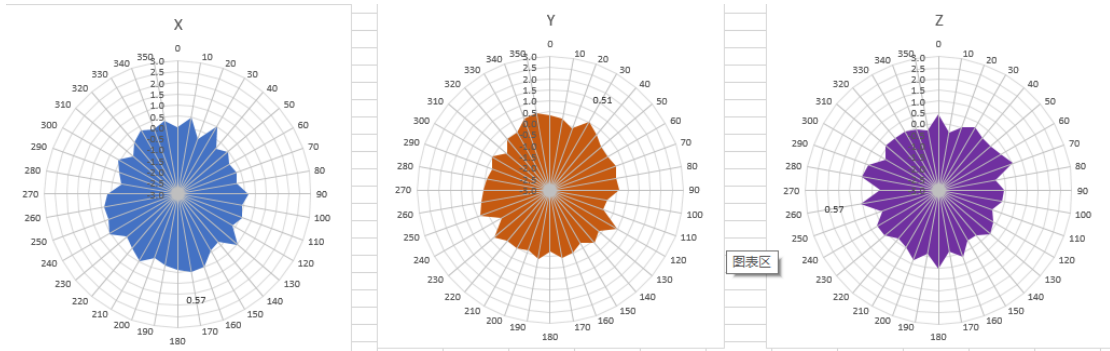
Passive efficiency testing equipment: Agilent Technologies E5071B



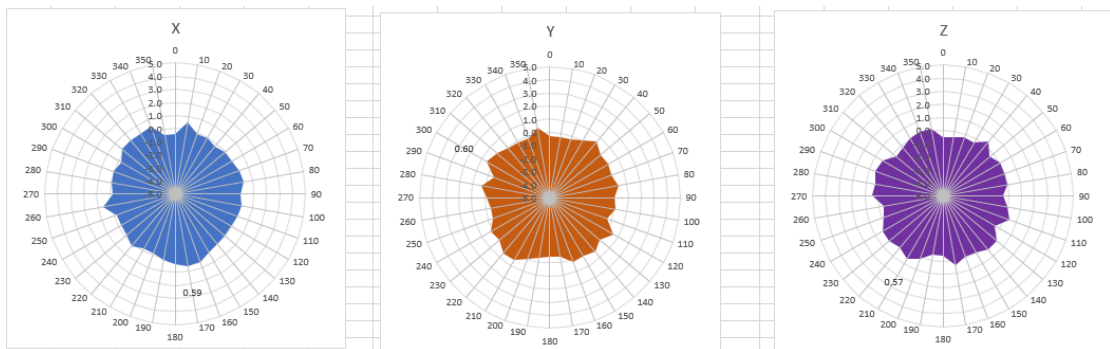
4 . Antenna Radiation Pattern



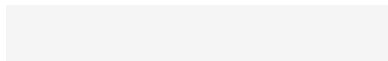
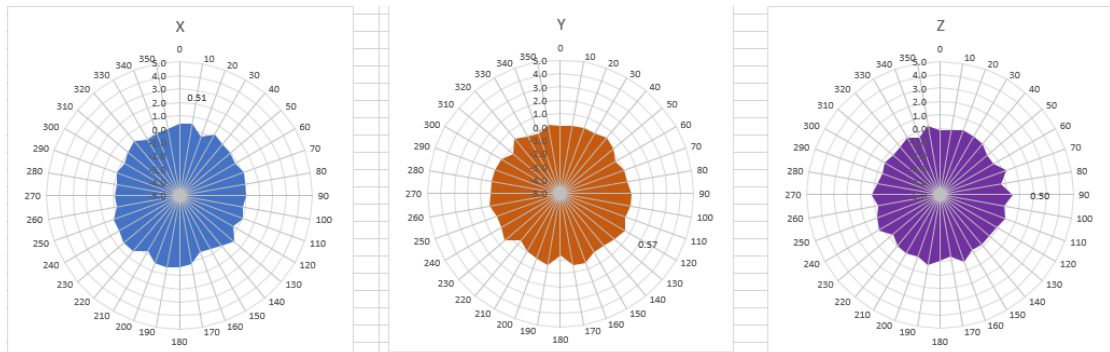
2400MHz



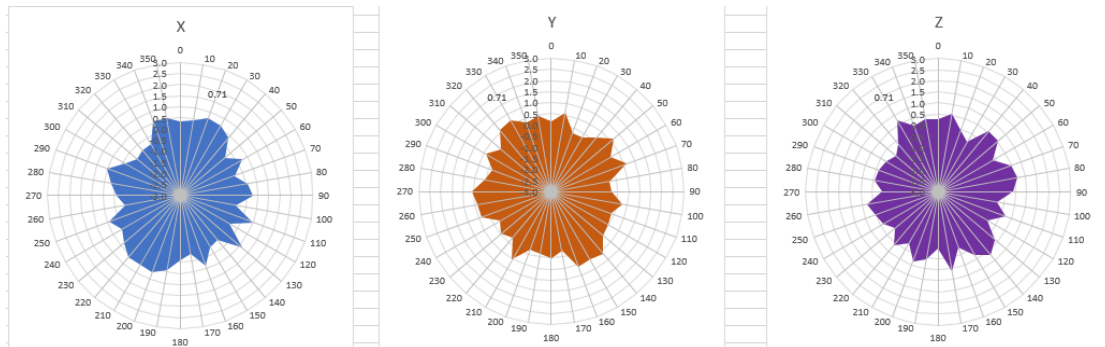
2450MHz



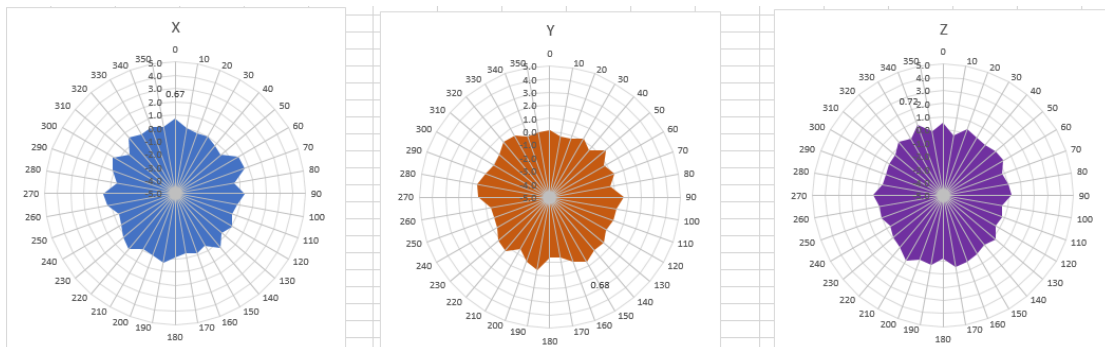
2500MHz



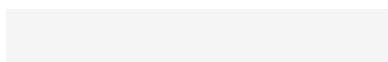
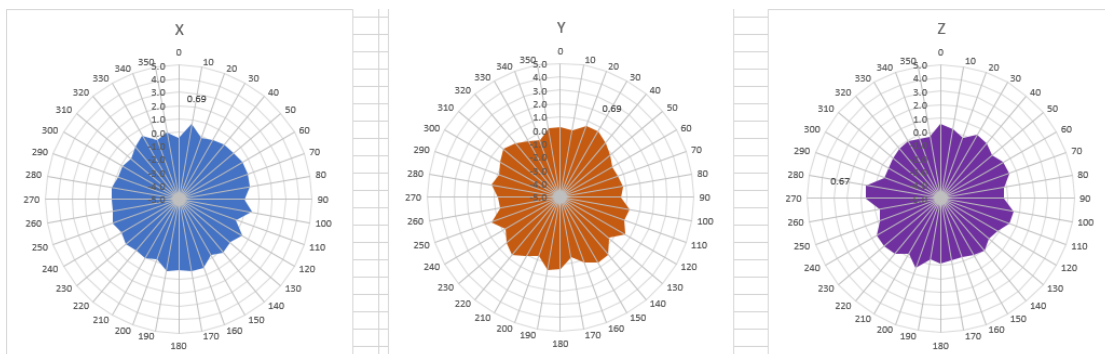
5180MHz



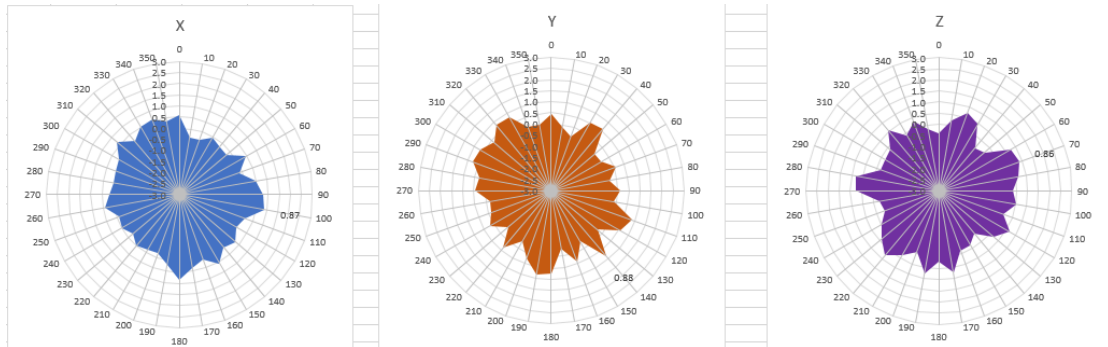
5220MHz



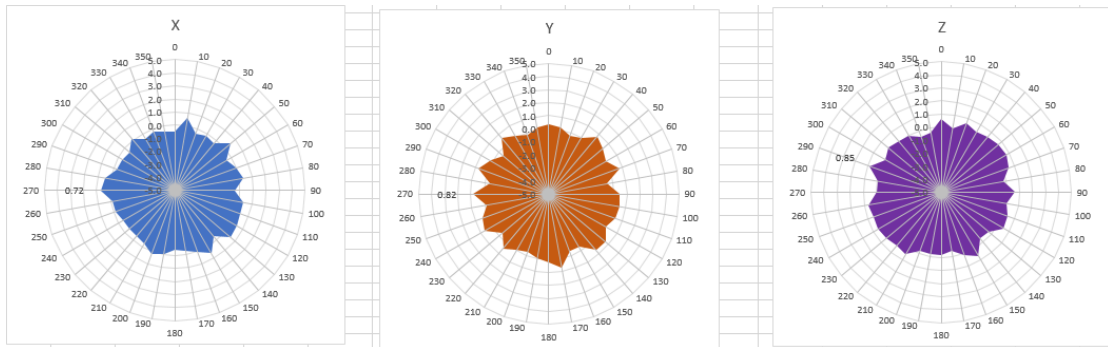
5240MHz



5745MHz



5785MHz



5825MHz

