

# AROMATECH



## AromaPro

Welcome to

# AROMATECH



## **Pure scent — and nothing else.**

Our cold-air diffusers disperse scent using filtered air instead of water or heat. The result: a cleaner, more consistent scent experience.

## **Powerful.**

Our cold-air diffusers cover twice the square footage of ultrasonics or candles.

## **Consistent.**

Long-lasting fragrance is evenly distributed throughout your home.



# The Magic of Nebulization

## What is Cold-air Diffusion?

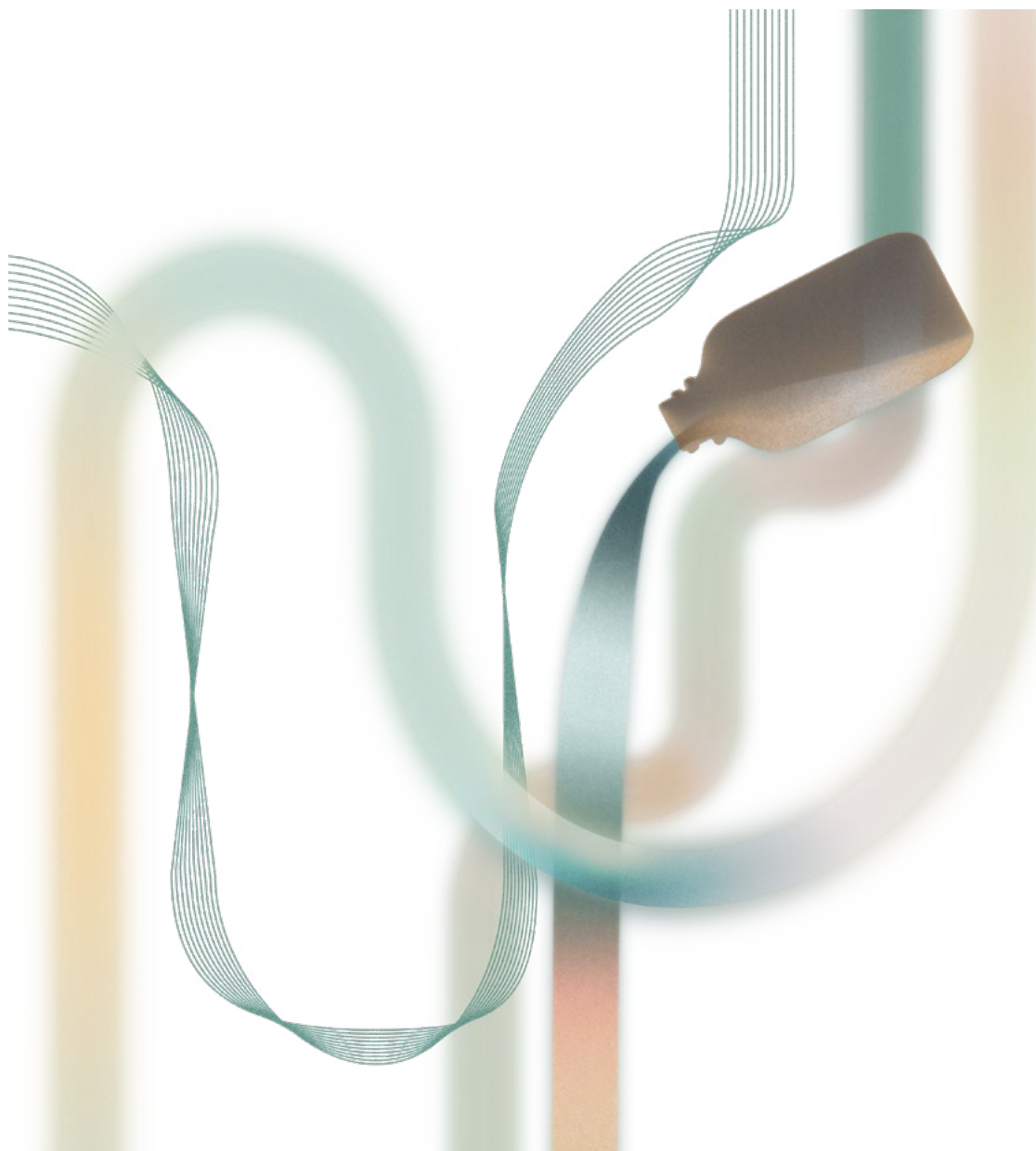
Cold-air diffusers disperse fragrance oils through nebulization—a process that breaks down scent oils into an ultrafine dry mist. The nanoparticles in this mist are so tiny that they remain suspended in the air for hours. This cutting-edge technology uses no water, alcohol or heat, diffusing scents in their purest form.

## Why is it Better?

Cold-air diffusers can cover spaces twice as large as typical candles, reed diffusers, plug-ins and ultrasonics. They're more consistent, ensuring fragrance is evenly distributed, and more precise, giving you the option to adjust the scent intensity. Our diffusers are cleaner because they neither dilute nor heat the scent oil.

## Cold-air Versus Ultrasonic

No water, no mold—our cold-air diffusers have a number of benefits over traditional ultrasonics. They're more powerful and use diffuser oils more efficiently, so your scents last longer. They're also far easier to use, you can go weeks between refills and no hands-on cleaning is required. In fact, a quick rinse with our cleaning solution is the only maintenance recommended.



## **Our Ingredients**

We're very particular about what goes into our diffuser oils—and what stays out. To craft the safest, purest and most beautiful scents, we use a mix of safe synthetic and naturally derived ingredients. All of our diffuser oils are sustainably sourced and made in the U.S.

## **Our Safety Promise**

Our diffuser oils exceed the strict safety and environmental standards set by the International Fragrance Regulatory Association (IFRA), as well as the Volatile Organic Compound (VOC) guidelines set by the California Air Resources Board. They are entirely free of parabens, sulfates, synthetic colors and other harmful additives. Please note that our oils are for diffuser use only; do not use topically or ingest. Those with medical conditions should consult a health care practitioner prior to use.

# Contents

<a href="#">The Magic of Nebulization</a>	<a href="#">2</a>
<a href="#">Features &amp; Specifications</a>	<a href="#">6</a>
<a href="#">Technology</a>	<a href="#">7</a>
<a href="#">Diagram of Parts &amp; Accessories</a>	<a href="#">8</a>
<a href="#">Where to Place</a>	<a href="#">9</a>
<a href="#">Our Placement Suggestions</a>	<a href="#">10</a>
<a href="#">Installation</a>	<a href="#">11</a>
<a href="#">HVAC Installation</a>	<a href="#">14</a>
<a href="#">Bluetooth connection</a>	<a href="#">20</a>
<a href="#">Timer Settings</a>	<a href="#">24</a>
<a href="#">Oil Consumption</a>	<a href="#">28</a>
<a href="#">Diffuser Cleaning Guide</a>	<a href="#">30</a>
<a href="#">FAQ &amp; Troubleshooting</a>	<a href="#">33</a>
<a href="#">Warnings</a>	<a href="#">40</a>
<a href="#">Warranty &amp; Support</a>	<a href="#">41</a>
<a href="#">Regulatory Information</a>	<a href="#">42</a>



## Features

- Revolutionary Nebulizing Technology
- 500ml of oil lasts up to 3 months
- Uniform and consistent scent day after day
- Adjustable scent intensity
- 24/7 digital timer
- Whisper-quiet operation
- No water
- No heat
- No residue

## Specifications

PRODUCT NAME	AROMAPRO
COVERAGE	4,000 SQ.FT
OIL CAPACITY	500ML/16OZ
REFILL	1-3 MONTHS
CONSUMPTION	1-2ML PER HOUR
DIMENSIONS	11"W X 10"H X 3.5"D
WEIGHT	8LBS
INPUT VOLTAGE	110-240V AC
OUTPUT VOLTAGE	12V DC

## Technology

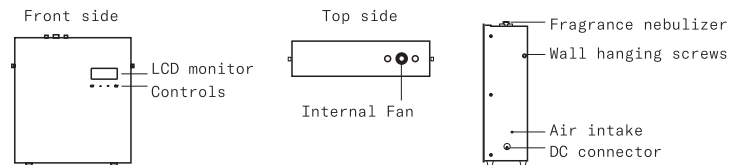
The scent is diffused through nebulization, a process that breaks down fragrance oil into a very fine dry mist. This preserves the intention behind your essential oil blends and their olfactive and therapeutic powers without diluting the oil in water, heating it or adding solvent to it.

This nebulizing technology, combined with an essential or aroma oil blend, produces nano-particles that suspend in the air for several hours while providing the benefit of therapeutic use of essential oils or simply enhancing your ambiance.

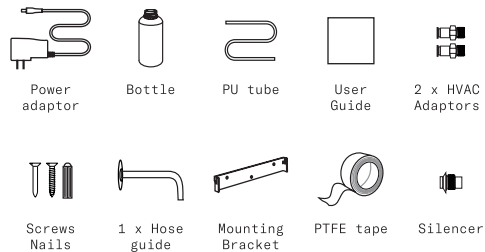
Diffusing helps to reduce dust, pet dander allergens, and other airborne allergens from non-living matter (e.g. dust mite matter allergens) while AromaTech's 100% all natural diffuser blends bring nature's goodness into your space by supporting harmony and balance.

Using only AromaTech essential and aroma oil blends will guarantee the best performance of your diffuser. No mixing or diluting with water, carrier oils or alcohol is required. Simply fill the bottle with what nature created and enjoy!

## Diagram of Parts



## Accessories



## Where to Place

### APPLICATIONS

Aromatherapy, ambient scenting and odor control.

### LOCATION

The AromaPRO is designed to be used as a table-top, wall mount or HVAC connected unit.

### SCENTING COVERAGE

The AromaPRO can be adjusted to scent an area ranging from 100 to 4,000 sq.ft. (10 to 400 sq.m)

### SCENT INTENSITY

Adjust your scenting experience and hours of operation through the internal touch LCD timer.

### DEVICE LOCATION

The most important element of your scenting experience is to properly position the device in the room, to ensure optimal performance and control.

## *Our Placement Suggestions*

- Choose the location where the aroma oil molecules can use the natural airflow in a room. This is particularly important with air-conditioned spaces. The best location for the AromaPRO is where there is a lot of airflow.
- If you are not sure of the direction of the airflow, simply turn on the AromaPRO and using a flashlight point it at the scent output and watch where the scent will travel. Alternatively, light up a match and blow it out immediately. The direction of the scent or smoke will tell you which way the fragrance will travel.
- The AromaPRO is a luxury and aesthetically beautiful device. Keep it always in the open area and do not hide it behind or under pieces of furniture.
- Try a variety of locations and settings until you are happy with scent coverage. Give the AromaPRO a little time to adjust to the new location and setting before changing it again.

## *Installation*

The AromaPRO can be used as a portable device, wall mounted or connected to your HVAC unit. If you are wall mounting or connecting the AromaPRO to the HVAC, please follow the below instructions. If you are using the device as a free-standing unit, please go to page 15 to set up the timer

### PARTS AND TOOLS REQUIRED

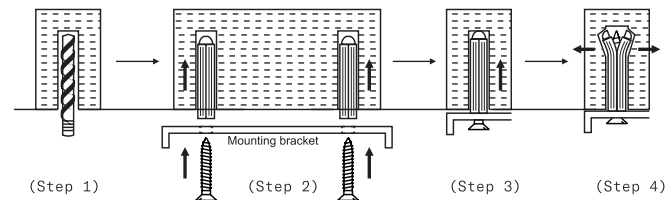
You will require the following tools to wall mount or connect the AromaPro to your HVAC. If using the AromaPRO as a stand-alone or shelf top unit, no installation or tools are required.

1. A level to ensure the wall mount bracket is exactly horizontal.
2. A hammer for the dry wall anchors.
3. A Philips screwdriver to match the screws provided or any other screwdriver that matches the screws to attach to the anchors you have selected.
4. Drill and a drill bit to drill a hole for the hose guide. (for HVAC installation)



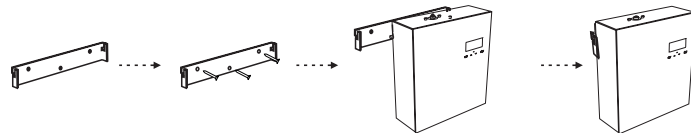
### MOUNTING WALL BRACKET

1. Using drill bit make a hole in the drywall the size of the plug.
2. Insert the drywall plug. If needed tap lightly with a hammer to fully insert the plug.
3. Screw the bracket to the wall aligning with drywall plugs.



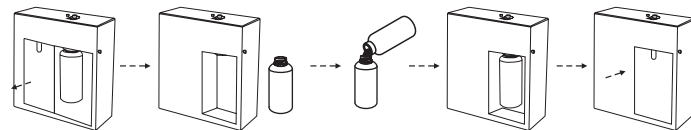
### MOUNTING AROMAPRO

1. Always make sure the AromaPro is mounted straight up.
2. Attach the wall bracket with all the supplied screws or nails (depending on the surface).
3. Hang the machine on the hinges.



### FILLING THE BOTTLE

1. Unplug the machine from the outlet.
2. Open the door.
3. Unscrew the bottle.
4. Fill the bottle with fragrance.
5. Screw the bottle back on the machine straight and snug.
6. Close the door.



## *HVAC Installation*

### HVAC PRE-INSTALLATION CHECKLIST

1. Confirm the area to be scented.
2. Locate the Air Handling Unit or duct that serves the area to be scented.
3. Make sure the Air Handling Unit does not use an open gas flame.
4. Locate and mark the optimal position for the Scent Point.
5. Locate and mark the exact location for placement of the scent diffuser. (See Figure A page 13)
6. Confirm the distance between the Scent Point and the proposed scent diffuser location. (Air tube should be max 3 feet. Avoid dips and coils or lows in the air tube. The Scent Point should ALWAYS be higher than the scent diffuser).
7. Locate and install 110 or 220V AC power outlet close to the diffuser install location.  
Avoid placing the power outlet directly under the scent diffuser.

### SCENT DIFFUSER POSITIONING

It is important to locate an insertion point where the scent output will be smoothly drawn into and mixed with the airflow. This usually means those parts of the AHU where the static pressure is negative.

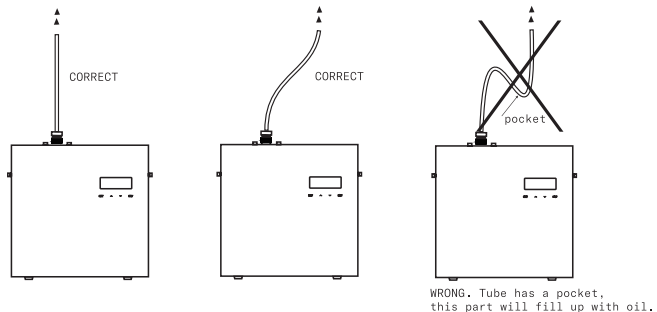
### IDEAL LOCATIONS

- Before the supply fan with injection through the wall of the AHU. Positioning immediately before the fan and after the coils if possible or in the mixed air chamber.
- Behind the blower with the entire scent diffuser mounted inside the AHU in the mixed air chamber.
- Outside the AHU in the Supply Air duct.
- Best practice when installing in an AHU is to place the hose guide after the heating and cooling coils. If this is not possible, the scent output can pass over hot water, steam, chilled water, and DX coils.

OPEN GAS FLAMES SHOULD ABSOLUTELY BE AVOIDED. IF INSTALLATION MUST BE OVER GAS HEATED COILS OR OPEN GAS FLAMES, CONTACT AROMATECH TECHNICAL SUPPORT

## TUBE CONNECTION ON AIR DUCT

The best location for the Scent Machine is below the Scent Point. The air tube should run upward as short a distance as possible and NEVER MORE THAN 3 FEET. If an upward air tube run is not possible, care should be taken to support the hose to prevent sagging or any low spots in the run to avoid any possibility of condensation and liquid collection which will block the scent output. Give the air tube an upward slant along its run.



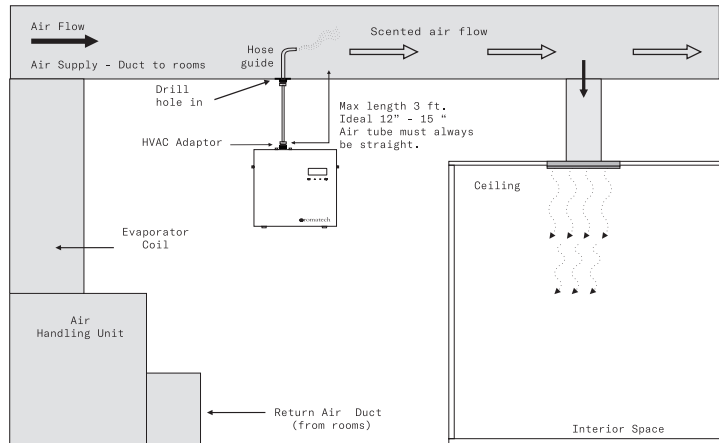
Diffusing the scent via HVAC will allow you to cover multiple rooms and zones. To scent the right zones, check with your HVAC provider or Mechanical Engineer to determine which HVAC unit to connect to.

## CONNECTING THE DIFFUSER TO HVAC

1. You will want to choose the air handler you want to connect to. If you have multiple air handlers select the one that will cover the area you wish to be scented. Consult your HVAC supplier if needed.
2. With a metal drill bit designed to drill through sheet metal, drill a hole the size of the hose guide in the air duct directly after the blower. Make sure you are tapping into the supply side of your duct, not the return side.
3. **IMPORTANT:** Never install before the coils or filters as the filters will dilute the scent and you will not get the same result.
4. Once the hole is made, insert the hose guide. The hole on the end of the hose guide should be pointing with the air flow not against it. This allows the scent to travel in the same direction as the air flow.
5. Secure the hose guide by screwing it to the duct.
6. Screw in the supplied HVAC adaptor into the hose guide.
7. Take a second HVAC adaptor and screw it into the AromaPro.
8. Either wall mount the AromaPro to the duct, the wall or place on a shelf directly under the Scent Point connection. It's important to keep the AromaPro as close as possible to the scent point. MAX AIR TUBE LENGTH SHOULD BE 3 FEET

9. Cut supplied air tube to length to go from the AromaPro to the hose guide. The distance between the AromaPro and hose guide should be as short as possible. MAX 3 FEET. Do not leave any slack. Coiling or excess of the air tube will create air pockets and buildup of scent inside the tube.
10. Connect the AromaPro to the 110V-240V plug and set the timer.

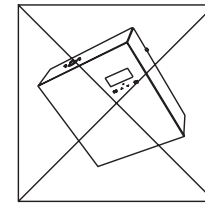
AROMAPRO HVAC CONNECTION DIAGRAM (FIG A)



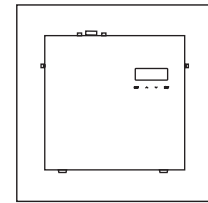
**IMPORTANT:** Do not drill through a coil, or before the filters.

**WARNING:**

After installation, please keep the machine vertical. Tilting or placing it flat may cause an oil overflow. If the AromaPRO is tilted, the oil will overflow inside and may potentially damage the machine.



WRONG



CORRECT

# Using the Scenting App

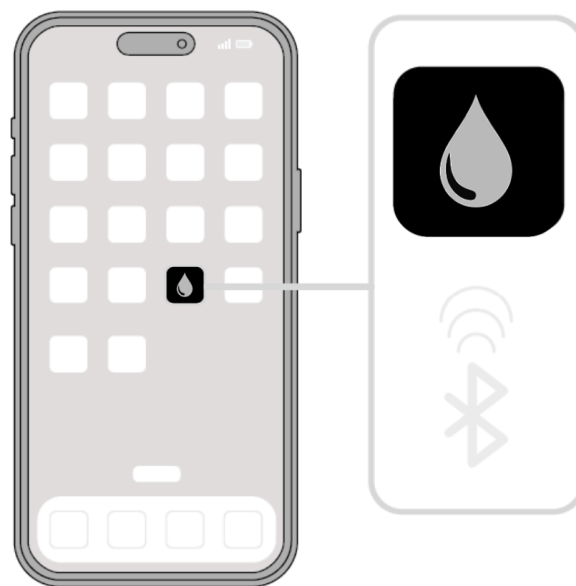
For FAQs about AromaTech product in general, see: <https://aromatechscents.com/pages/faq>

## Step 1.

To start using your diffuser:

Download the Scenting App from the Apple App Store (iOS) or Google Play Store (android).

Scan the QR code to download.



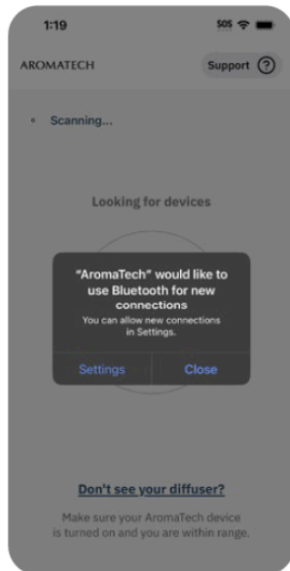
## Step 2.

Make sure your AromaTech diffuser is plugged in before connecting with the App



### Step 3.

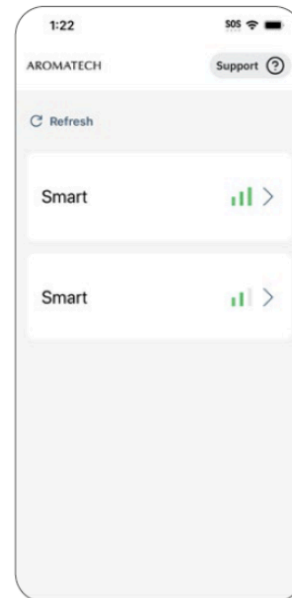
Ensure Bluetooth is enabled on your phone.



Open the Scenting App. You will receive a prompt to allow Bluetooth permissions for the Scenting App.

### Step 4.

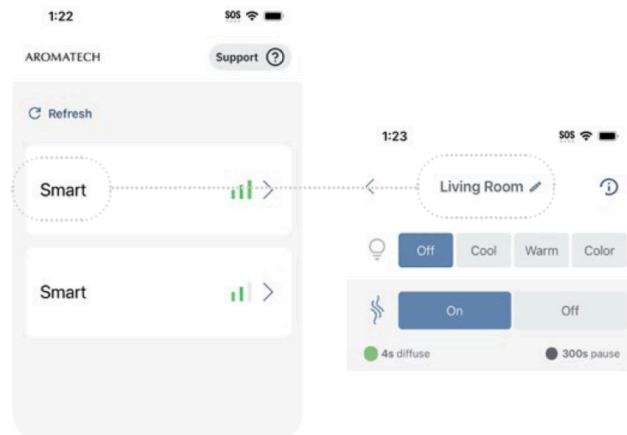
On the Diffuser List screen, select the diffuser you would like to set up.



### Step 5.

After selecting the diffuser, continue to set up your schedule and intensity.

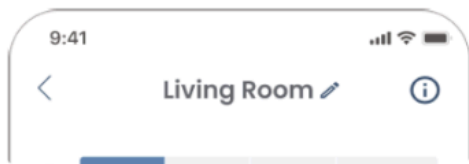
1. Selecting the edit icon beside the diffuser's name (default: "Smart")
2. Type in the desired name in the text box.  
Note: The maximum number of characters allowed is 13.
3. Click "Save" to save changes or "Leave without saving" to discard changes.



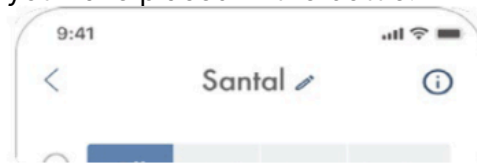
### Step 6.

Device naming tips:

Name your diffuser based on its location to easily identify and adjust schedules when using multiple Diffusers.

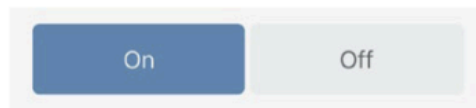


Name your diffuser based on the scent you have diffusing. This ensures you remember what aroma oil you have placed in the bottle.



### Step 7.

If you would like to turn off scent diffusion, tap the "Off" button in the Diffusion Control section. All schedules will be disabled and grayed out. You can continue to edit any of the five schedules

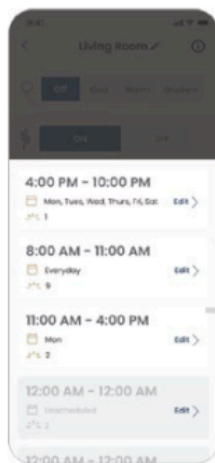


### Step 8.

To restart scent diffusion tap the "On" button in the Diffusion Control section and ensure there are active schedules in the Manage Schedules section.

## Step 9.

Below the diffuser's On/Off button, you'll see five available schedules. The first is set by default to diffuse 24/7; the remaining four schedules are waiting for you to set. If all schedules are grayed out, you will need to set a schedule otherwise your diffuser will not Run. To adjust and turn on any of the schedules:



11:00 AM - 4:00 PM

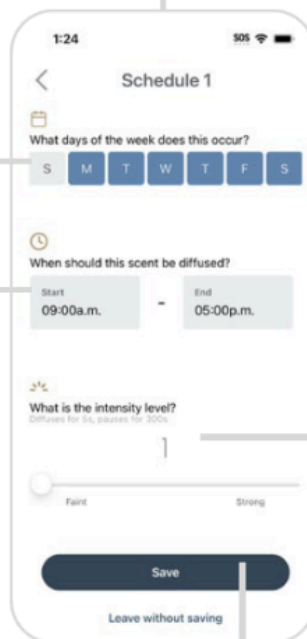
Mon  
2

Edit >

Click "Edit" in the schedule card you want to update.

Select the days for the scenting schedule.

Choose a desired start and end time.



Set the diffusing intensity level.  
There are 20 intensity settings.

Grade	Working(s)	Stop(s)
G1	15s	300s
G2	15s	150s
G3	20s	120s
G4	20s	85s
G5	25s	80s
G6	30s	75s
G7	30s	60s
G8	30s	50s
G9	30s	40s
G10	30s	33s
G11	33s	30s
G12	40s	30s
G13	50s	30s
G14	60s	30s
G15	75s	30s
G16	80s	25s
G17	85s	20s
G18	120s	20s
G19	150s	15s
G20	300s	15s

Save your edits by clicking "Save".  
You'll return to the main diffuser page.

Continue editing each schedule until you've found the perfect set of schedules for your space and desired scenting experience.

## Timer Settings



### POWER ON

Connect the 12V adaptor to the outlet and turn ON the power switch. Local time and scent intensity level will appear.

### SCREEN LOCK AND UNLOCK

The LCD screen will automatically lock itself after 10 seconds if not used. Press SET and hold for 5 seconds to unlock the display.

### LOCAL TIME SETTING

Press SET button for 3 seconds until you hear a beep to enter local time setting menu. Press ▲ or ▼ button to choose the correct day. Then press ENT button to move to local time setting. Press ▲ or ▼ button to change the number. Press ENT button to move to another position. Press SET to confirm

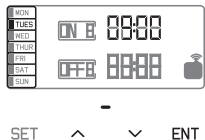


Fig 1

### SETTING HOURS OF OPERATION

There are 5 working periods available to set the hours of operation (Figure 2).

(The first working period is set to factory default setting, 7 am ON and 21:00 OFF. The rest are at set to 00:00)

- Touch SET button to set working period 1 (ON 1 & OFF 1).
- Press ▲ or ▼ button to adjust the ON time hours, then press ENT to move to the next position.
- Press ▲ or ▼ button to adjust the ON time minutes, then press ENT to move to the next position.
- Press ▲ or ▼ button to adjust the OFF hours, then press ENT to move to the next position.
- Press ▲ or ▼ button to adjust the OFF minutes, then press ENT to move to the next position.
- Now select the Day(s) of the Week for this working period. Use the ▲ or ▼ button to turn ON (Figure 3) or OFF (Figure 4) the day for this time period. Press ENT to move to the next day. When you have your day(s) selected press SET to move to Time Period



(Fig 2)



(Fig 3)



(Fig 4)

For multiple start and stop times, repeat the above for time periods 2 through 5 as desired. Please note that if you only want one start and stop time per day, you can touch SET several times until the display shows the current time of day

Available working period	07:00 21:00	00:00 00:00	00:00 00:00	00:00 00:00	00:00 00:00
MON	ON/OFF	ON/OFF	ON/OFF	ON/OFF	ON/OFF
TUES	ON/OFF	ON/OFF	ON/OFF	ON/OFF	ON/OFF
WED	ON/OFF	ON/OFF	ON/OFF	ON/OFF	ON/OFF
THUR	ON/OFF	ON/OFF	ON/OFF	ON/OFF	ON/OFF
FRI	ON/OFF	ON/OFF	ON/OFF	ON/OFF	ON/OFF
SAT	ON/OFF	ON/OFF	ON/OFF	ON/OFF	ON/OFF
SUN	ON/OFF	ON/OFF	ON/OFF	ON/OFF	ON/OFF



SET ^ v ENT

(Fig 5)

### SETTING SCENT INTENSITY

You are now ready to start scenting. Remember, the AromaPRO is a high performance adjustable device capable of scenting spaces from 100 to 4,000 sq.ft. Once the fragrance is in the device, basic operation is simply adjusting the scent level to match the room size, conditions, and your taste. There are 1-20 grades of intensity.

Using the UP ▲ button and DOWN ▼ button to control the scent intensity.

Start at minimum and watch the scent spread throughout your space. If needed, adjust the buttons to increase or decrease the intensity accordingly.

This is a unique and powerful performance feature of the AromaPro. Once you have chosen the right setting, you should only have to adjust slightly with the different fragrances.

Grade	Working(s)	Stop(s)
G1	15s	300s
G2	15s	150s
G3	20s	120s
G4	20s	85s
G5	25s	80s
G6	30s	75s
G7	30s	60s
G8	30s	50s
G9	30s	40s
G10	30s	33s
G11	33s	30s
G12	40s	30s
G13	50s	30s
G14	60s	30s
G15	75s	30s
G16	80s	25s
G17	85s	20s
G18	120s	20s
G19	150s	15s
G20	300s	15s



Oil Consumption

	AromaPro(500ml)									
Consumption(ml/h)	G1	G2	G3	G4	G5	G6	G7	G8	G9	G10
	0.15	0.30	0.46	0.61	0.75	0.91	1.05	1.21	1.36	1.51
	G11	G12	G13	G14	G15	G16	G17	G18	G19	G20
	1.66	1.81	1.96	2.11	2.25	2.41	2.55	2.71	2.86	3.02

Note: Above data is based on using AromaTech aroma oil.  
Using another type of oil may affect the consumption rate.

RECOMMENDED INTENSITY SETTINGS.

The grading system starts from 1 being the lowest and ends with 20 being the highest. Short but frequent bursts are recommended. Using the lower settings will allow for a subtler scenting experience without being overpowering. Intensity setting is personal and depends on multiple factors, such as air flow, the location of the scent machine and how subtle or strong you want the scent to be. Use your discretion and start out at Grade 1 and work your way up if needed.

To test if the intensity is too strong or too light, leave the scented area for at least

5 minutes and re-enter after getting some fresh air. Only then will you be able to tell if the intensity grade needs to be adjusted up or down.

Please note that the human nose gets used to a fragrance after 30 minutes of exposure. If at any point during the diffusion process you don't smell the scent anymore simply leave the scented area and re-enter after getting some fresh air.

## *Diffuser Cleaning Guide*

- We recommend cleaning the AromaPro every 2 months.
- When changing oil clean out the diffuser.
- If scent diffusion becomes weak, cleaning is recommended.

### CLEANING STEPS:

1. Turn the device off.
2. Unscrew the bottle and replace the essential oil with 20ml rubbing alcohol.
3. Screw the bottle into the AromaPRO and let it run for 10-15 minutes.
4. When 10-15 min is up replace rubbing alcohol with your essential oil.

You can start using the scent machine immediately after cleaning it. There is no need to wash the tube.

- If the screen crashes, press ENT and hold for 5 seconds to reset the machine and bring it to factory settings.
- When the machine is on pause and not diffusing the atomization icon will be displayed.

### CAUTIONS

- Only use the power adapter supplied with the device.
- Never operate the diffuser if the power adapter is damaged.
- Do not use the diffuser if any part of the device is broken.
- To reduce the risk of electric shock, do not attempt to service the device in any way other than as described in the "Care & Maintenance" section of this manual.
- Do not disassemble or attempt to repair the diffuser; in the event of a problem, please contact us at 1.888.276.6245 or email [help@aromatechscents.com](mailto:help@aromatechscents.com)
- When moving the device, always keep it upright and secure with both hands.
- Always place the unit on a stable, level surface, i.e. shelf or a table.
- Do not plug the unit into the wall socket with wet hands.
- Do not pour water or other liquids into the bottle with aroma oil.
- Do not tilt, move or attempt to empty or refill unit while in operation.
- To prevent clogging of the diffuser, run rubbing alcohol once a month for 15 min.

- Always turn off and unplug the device during maintenance or when not in use.
  - Ensure that the power adapter is not covered or blocked when plugged in; it must be able to dissipate the heat properly.
  - Do not cover the diffuser with objects or material while in use.
  - Keep the device at least 24" from the ceiling.
  - Use only AromaTech diffuser blends; other oils may contain fragrances, base oils or synthetics that could result in malfunction. Some single note essential oils are also too thick or heavy for use in the ultrasonic diffuser. See FAQs for more information.
  - In case of smoke, unusual scent, loud noise, or other malfunction, unplug the unit immediately and discontinue use. Further use may result in fire or electrical shock.
  - Do not immerse the unit in water.
  - Always keep unit out of reach of small children and pets.
- \* STORE AT 0°C-50°C, 5%-95% HUMIDITY.

## FAQ

### WHAT SIZE ROOM CAN AROMAPRO HANDLE?

The AromaPro is fully adjustable for different size areas. It is most effective in spaces from 100 to 4,000 square feet (10 to 400 square meters). Depending on the essential or aroma oil you use, it may cover more area since some oils are more potent than others. When connected to HVAC, coverage may increase. Ideal for scenting large spaces such as living rooms, large bedrooms, office space or even an entire home, AromaPro is the most potent and discrete diffuser on the market.

### WHERE CAN I PLACE THE AROMAPRO?

You must place the AromaPro on a flat surface where it can take full advantage of the natural airflow in the space. If placed on the tabletop or a shelf, make sure it doesn't tip. Alternatively, you can wall mount it or connect to the HVAC. When wall mounting the AromaPro, make sure it is secured properly and is at least 6 feet off the ground and 20" from the ceiling. Refer to the User Manual for more details and how to connect to HVAC (air conditioning and heating system)

### DO I NEED TO ADJUST AROMAPRO?

Yes! AromaPro is a very powerful device that can handle small and very large spaces. If it is set too high for the room size, it can cause discomfort for some people. Adjusting scent intensity is easy. Simply touch the up and down button on the device to adjust from level 1 (min) to level 20 (max). Start at level 1 and work your way up if needed.

#### **HOW STRONG SHOULD I MAKE THE SCENT?**

Remember, less is more. The AromaPro allows you to get rid of bad odors and create a unique ambiance with small amounts of scent. Unlike other air fresheners, the AromaPro can be adjusted with a simple touch. Human noses become used to scent very fast, so if you don't smell the scent anymore, that doesn't mean it's not there. Simply leave the scented area and re-enter with a fresh nose to get a better feel of how strong it is.

#### **WHAT IS THE CAPACITY OF THE AROMAPRO BOTTLE?**

The AromaPro uses 500ml bottles. The fragrance diffuser is designed only to take AromaTech bottles specific to the diffuser.

#### **HOW LONG DOES THE ESSENTIAL OIL LAST IN THE BOTTLE?**

The AromaPro uses a 500ml bottle of essential or aroma oil that will last 1 month with daily usage running about 12 hours a day. To preserve the essential oil, we highly recommend using the internal 24/7 timer and set it up so that the diffuser doesn't run at night. Depending on the essential oil you are using that time may increase or decrease. Some essential oils diffuse a lot faster due to their consistency and viscosity.

#### **WHAT IS THE AVERAGE OIL CONSUMPTION OF THE AROMAPRO?**

Oil consumption strongly depends on the essential or aroma oil used. Essential oils diffuse faster than aroma oils. Average oil consumption ranges from 1ml - 2ml per hour.

#### **WHAT IF MY UNIT DOES NOT TURN ON?**

Check to make sure the power adapter is correctly plugged into the DC power jack and the electrical source. If hours of operation timer is set incorrectly and you are trying to diffuse during the time that the machine is programmed to be off, the AromaPro will not scent.

#### **HOW DO I UNLOCK THE LCD IF IT IS LOCKED AND I CAN'T CONTROL THE DEVICE?**

AromaPro's intuitive timer is designed to lock itself (shut off) after 10 seconds if not in use. To unlock the display simply press and hold the SET button for 5 seconds.

#### **WHAT IF MY UNIT DOES NOT SCENT OR THERE IS ALMOST NO SCENT COMING OUT?**

Check first that there is aroma oil in the bottle and the bottle is screwed in straight and snug. If there is fragrance in the bottle but you still don't smell anything then either the device is in rest or pause mode, turned off, or the diffuser core is clogged and needs cleaning. Please see "Care & Maintenance" instructions.

#### **WILL THE AROMAPRO COVER MY ENTIRE HOUSE?**

It can, but it depends on how big your house is and how many air handlers you have in your home. If you have more than 1 air handler, you will require an additional AromaPro.

#### **HOW DO I CONNECT THE AROMAPRO TO THE HVAC (AIR CONDITIONING SYSTEM)?**

Depending on the HVAC set up of your home and amount of air handlers that service your entire home, choose the air handler that covers the largest area. Refer to the diagram on page 14.

#### **WHAT IF MY HOUSE IS LARGER THAN 4,000 SQUARE FEET?**

In this case, we recommend switching up to the Air Stream Single or Duo. It's a very powerful HVAC scent machine that is capable of scenting spaces up to 15,000 square feet.

#### **WHAT TYPE OF OILS CAN I PUT IN MY HOME DIFFUSER?**

Use only AromaTech™ diffuser blends; other blends and oils may contain base oils that could result in clogging the device. Many single note essential oils should not be used in the diffuser. Single note essential oils may have a thick or heavy consistency that can clog the diffuser and cause it to stop diffusing scent. AromaTech™ diffuser blends have been carefully blended to be effective for you, and safe and easy to use in your cold-air diffuser.

#### **IS AROMAPRO SAFE TO USE WITH CHILDREN AND PETS?**

Yes. When used as directed and only with AromaTech™ essential and aroma oil blends, AromaPro is the safest cold-air diffuser available. Make sure to request SDS if you require more info about the oil being diffused.

#### **IS AROMAPRO DIFFUSER ECO-FRIENDLY?**

AromaTech™ diffusers are the most Eco-friendly made products on the market. Unlike aerosols, the AromaPro uses no propellants, phthalates and produces no harmful volatile organic compounds (VOCs). Unlike many air fresheners, AromaPro uses no ethanol or similar solvent to enhance the evaporation of essential and aroma oils.

#### **WARRANTY AND SUPPORT?**

All products designed by AromaTech™ come with a 1 year limited warranty.

If you have any questions or issues, simply contact us at  
+1.888.276.6245  
support.aromatechscents.com  
help@aromatechscents.com



## Troubleshooting

Before submitting a warranty claim, please try the below steps to diagnose the problem and fix the issue. For warranty information, please contact AromaTech at 1.888.276.6245 or send us an email at [help@aromatechscents.com](mailto:help@aromatechscents.com)

## Important Tip

To avoid diffuser clogging and ensure optimal scenting experience, only use AromaTech essential and aroma oil blends. AromaTech oils have been formulated specifically for our diffusers. Failure to use AromaTech branded oils may cause malfunction or clogging of your diffuser. If that happens reach out to us and we will assist you with a replacement diffuser core (part with the PU tube).

CONDITION	POSSIBLE REASON	SOLUTION
Device is not working	<ol style="list-style-type: none"><li>1. Device is not connected to the power outlet</li><li>2. Faulty power supply adapter</li></ol>	<ol style="list-style-type: none"><li>1. Check if the device is connected to power</li><li>2. Replace power supply adapter</li></ol>
The device is not diffusing, can't hear the air pump.	<ol style="list-style-type: none"><li>1. Device is in pause/rest mode between cycles. Standard rest mode is 300 sec On and 30 sec Off</li><li>2. Pump failed</li></ol>	<ol style="list-style-type: none"><li>1. Wait for the device to turn back on by itself after the 300 On and 30 Off cycle</li><li>2. Replace pump. Contact AromaTech support</li></ol>
Device is working but no mist is visible and/or can't smell the scent.	<ol style="list-style-type: none"><li>1. Diffuser core is clogged</li><li>2. Device is in pause/rest mode</li></ol>	<ol style="list-style-type: none"><li>1. Replace oil with rubbing alcohol and run through the diffuser for 15 min. If that doesn't work contact us to replace diffuser core</li><li>2. Wait for device to turn back on by itself</li></ol>
Unusual and loud noise	Pump is damaged	Contact support to replace the pump
Oil is leaking	<ol style="list-style-type: none"><li>1. Make sure the device is always upright</li><li>2. Seal is broken, missing or damaged</li><li>3. Bottle is not screwed in straight and firm</li></ol>	<ol style="list-style-type: none"><li>1. If the device tipped, stand it upright</li><li>2. Change the rubber seal</li><li>3. Make sure the bottle is screwed in straight and snug</li></ol>

# Warnings

Follow basic safety precautions when operating your AromaTech Diffuser.

- Do not tilt the device.
- Only use AromaTech aroma oils in the glass oil vessel.
- Never dilute AromaTech aroma oils with water or carrier oils.
- Keep the diffuser away from fire and heat sources.
- Only use the power adapter supplied with the device.
- Ensure the power adapter is never blocked when plugged in.
- Never operate the diffuser if the power adapter is damaged or wet.
- Never pour water in or on the diffuser and never operate with wet hands.
- Do not use the diffuser if any part of the device is broken.
- Never attempt to service, disassemble, or repair the device in any way.
- When moving the device always carry it securely with both hands, keeping it upright and ensuring it does not tilt.
- Always place the diffuser on a stable, level surface and ensure there is at least 3' clearance above the diffuser.
- Do not cover the device with objects or material while in use.
- Keep your nose clear from the scent output and the top of the diffuser when it is operating.
- Always keep out of reach of small children and pets.
- Store at room temperature 68-75 F (20-23 C), 30-35% humidity.

# Warranty & Support



All AromaTech designed diffusers come with a worry-free 1-year limited warranty from the date of purchase. This warranty includes ongoing support with your diffuser. If you have any questions or would like assistance with your diffuser please email us at **[hello@aromatechscent.com](mailto:hello@aromatechscent.com)** and we'll gladly assist you.

AromaTech is proud to offer repairs, including all labor and parts, necessary to ensure your diffuser is in proper working condition during the warranty period. Note that repairs and exchanges are at the discretion of the AromaTech team. We are here to support you, however, the warranty does not cover damages or repairs due to user error, or as a result of damage caused by third-party oils.

AromaTech is proud to offer repairs, including all labor and parts, necessary to ensure your diffuser is in proper working condition during the warranty period. Note that repairs and exchanges are at the discretion of the AromaTech team. We are here to support you, however, the warranty does not cover damages or repairs due to user error, or as a result of damage caused by third-party oils.

[hello@aromatechscent.com](mailto:hello@aromatechscent.com)  
1.888.276.6245

# Regulatory Information

## United States

This device complies with Part 15 of the FCC Rules.

Operation is subject to the following two conditions:

1. This device may not cause harmful interference, and
2. This device must accept any interference received, including interference that may cause undesired operation.

### FCC Warning

Changes or modifications not expressly approved by the party responsible for compliance could void the user's authority to operate the equipment.

Note: This equipment has been tested and found to comply with the limits for a Class B digital device, pursuant to part 15 of the FCC Rules. These limits are designed to provide reasonable protection against harmful interference in a residential installation. This equipment generates, uses and can radiate radio frequency energy and, if not installed and used in accordance with the instructions, may cause harmful interference to radio communications. However, there is no guarantee that interference will not occur in a particular installation. If this equipment does cause harmful interference to radio or television reception, which can be determined by turning the equipment off and on, the user is encouraged to try to correct the interference by one or more of the following measures

- Reorient or relocate the receiving antenna.
- Increase the separation between the equipment and receiver.
- Connect the equipment into an outlet on a circuit different from that to which the receiver is connected.
- Consult the dealer or an experienced radio/TV technician for help.

### Radiation Exposure Statement

This product complies with the FCC portable RF exposure limit set forth for an uncontrolled environment and is safe for intended operation as described in this manual. Further RF exposure reduction can be achieved if the product can be kept as far as possible from the user body or set the device to lower output power if such function is available.

## Canada

This device contains licence-exempt transmitter(s)/receiver(s) that comply with Innovation, Science and Economic Development Canada's licence-exempt RSS(s).

Operation is subject to the following two conditions:

1. This device may not cause interference;
2. This device must accept any interference, including interference that may cause undesired operation of the device.

The digital apparatus complies with Canadian CAN ICES-3 (B)/NMB-3(B).

### Radiation Exposure Statement

This device meets the exemption from the routine evaluation limits in section 2.5 of RSS 102 and compliance with RSS 102 RF exposure, users can obtain Canadian information on RF exposure and compliance. This equipment complies with Canada radiation exposure limits set forth for an uncontrolled environment. This equipment should be installed and operated with a minimum distance of 20 cm between the radiator and your body.

Cet appareil contient des émetteurs/récepteurs exempts de licence qui sont conformes aux RSS exemptés de licence d'Innovation, Sciences et Développement économique Canada.

L'exploitation est soumise aux deux conditions suivantes:

- Cet appareil ne doit pas provoquer d'interférences;
- Cet appareil doit accepter toute interférence, y compris les interférences susceptibles de provoquer un fonctionnement indésirable de l'appareil.

L'appareil numérique du ciem conforme canadien peut CAN ICES-3 (B)/NMB-3(B).

### Déclaration d'exposition aux radiations

Cet appareil est conforme à l'exemption des limites d'évaluation courante dans la section 2.5 du cnr - 102 et conformité avec rss 102 de l'exposition aux rf, les utilisateurs peuvent obtenir des données canadiennes sur l'exposition aux champs rf et la conformité. Cet équipement est conforme aux limites d'exposition aux rayonnements du Canada établies pour un environnement non contrôlé. Cet équipement doit être installé et utilisé à une distance minimale de 20 cm entre le radiateur et votre corps.

# AROMATECH

aromatechscent.com  
Toll Free: 1-888-276-6245  
Int: 1-602-698-9696  
hello@aromatechscent.com

1202 N. 54th Avenue, #105  
Phoenix, AZ 85043

© 2023 AromaTech Inc.