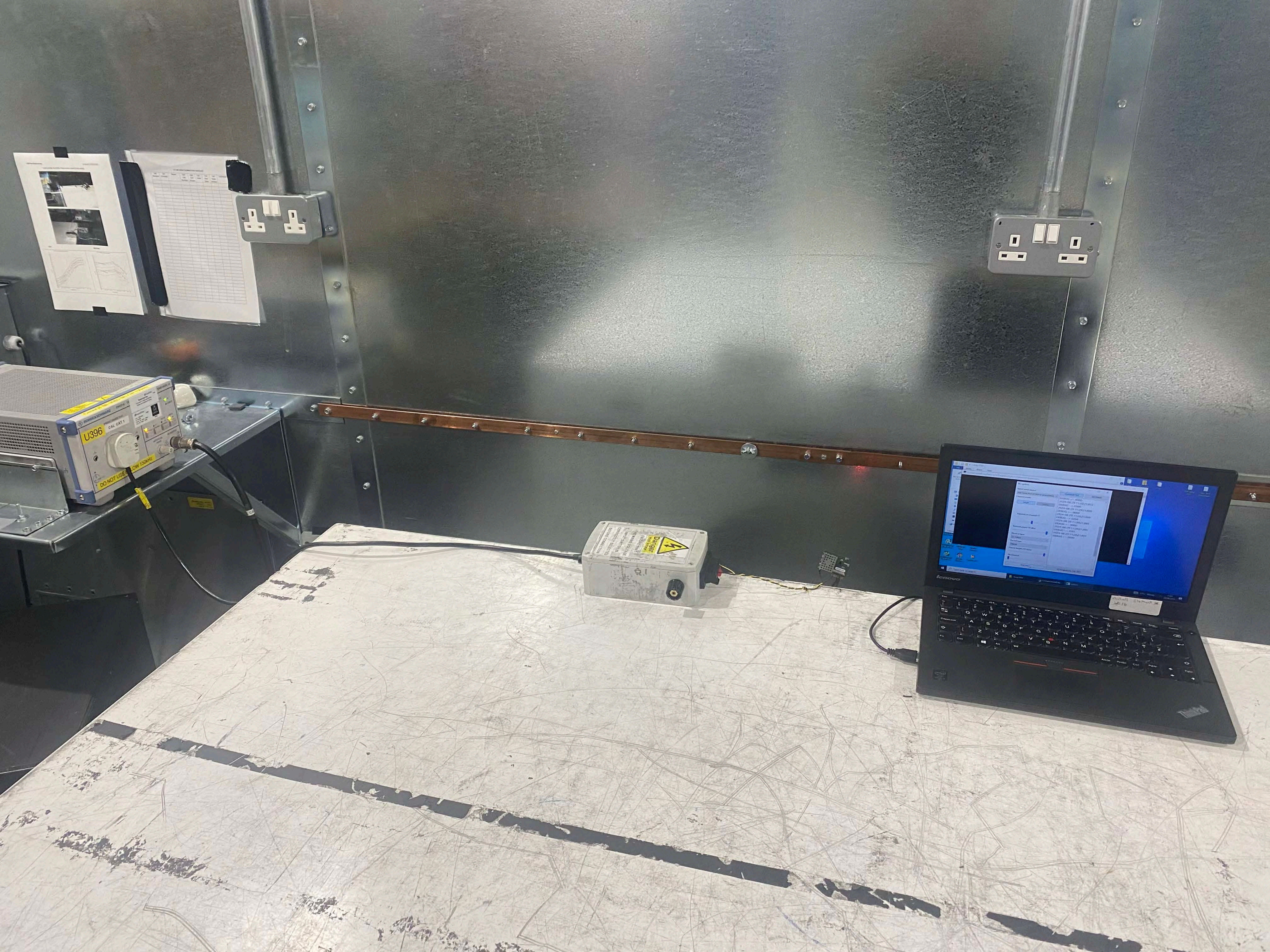


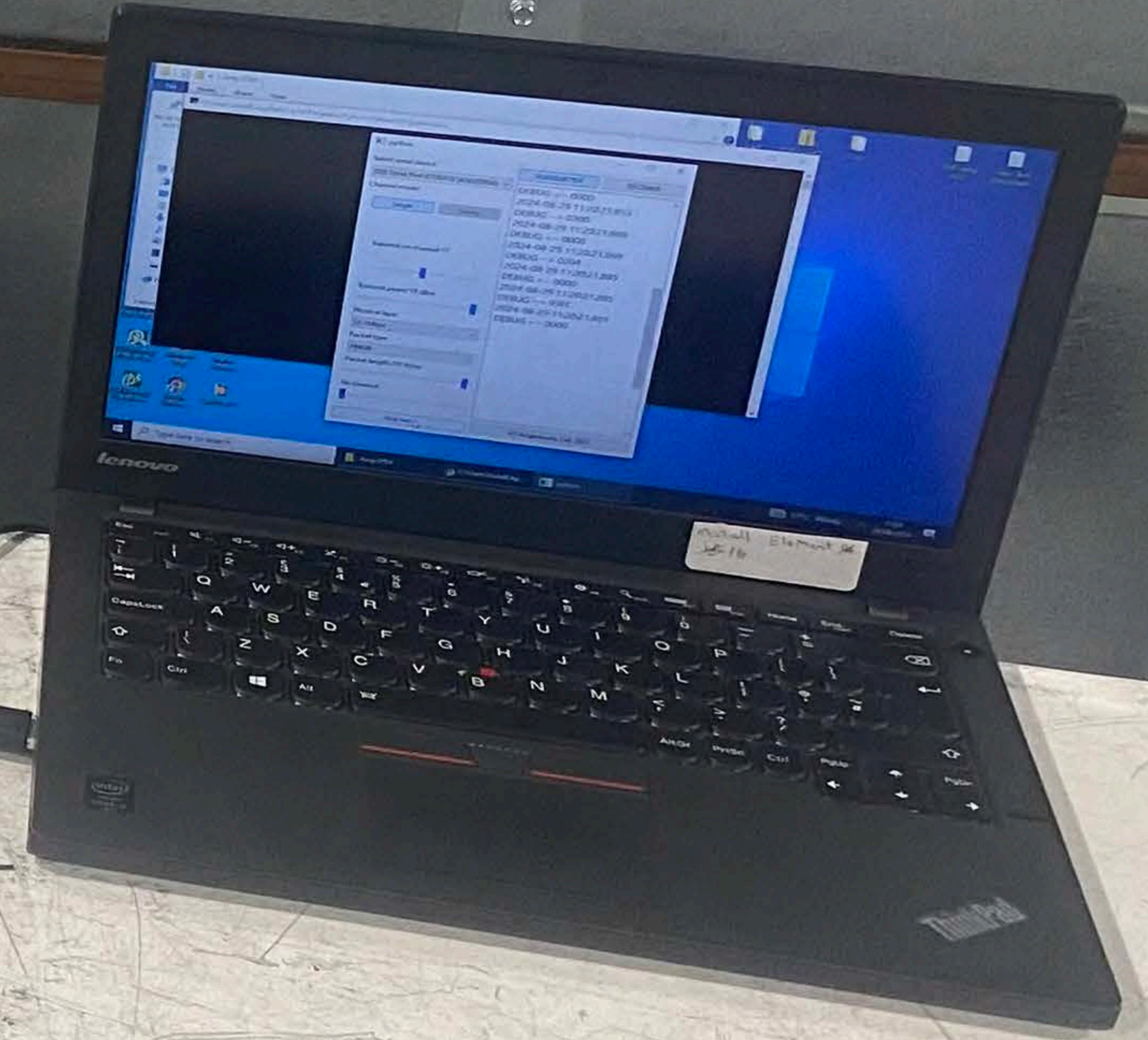


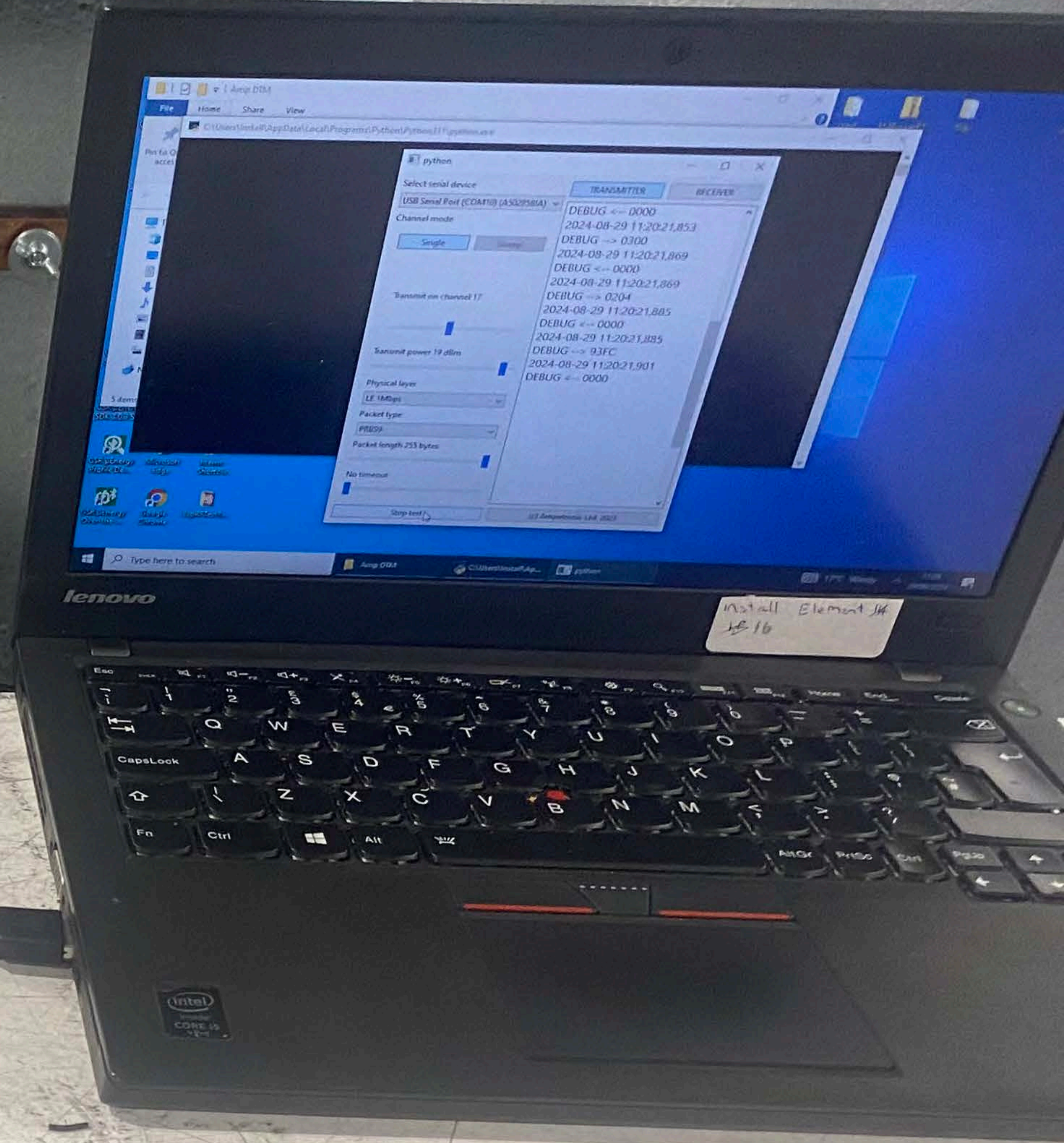
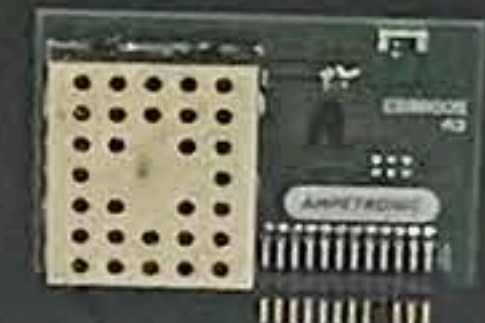
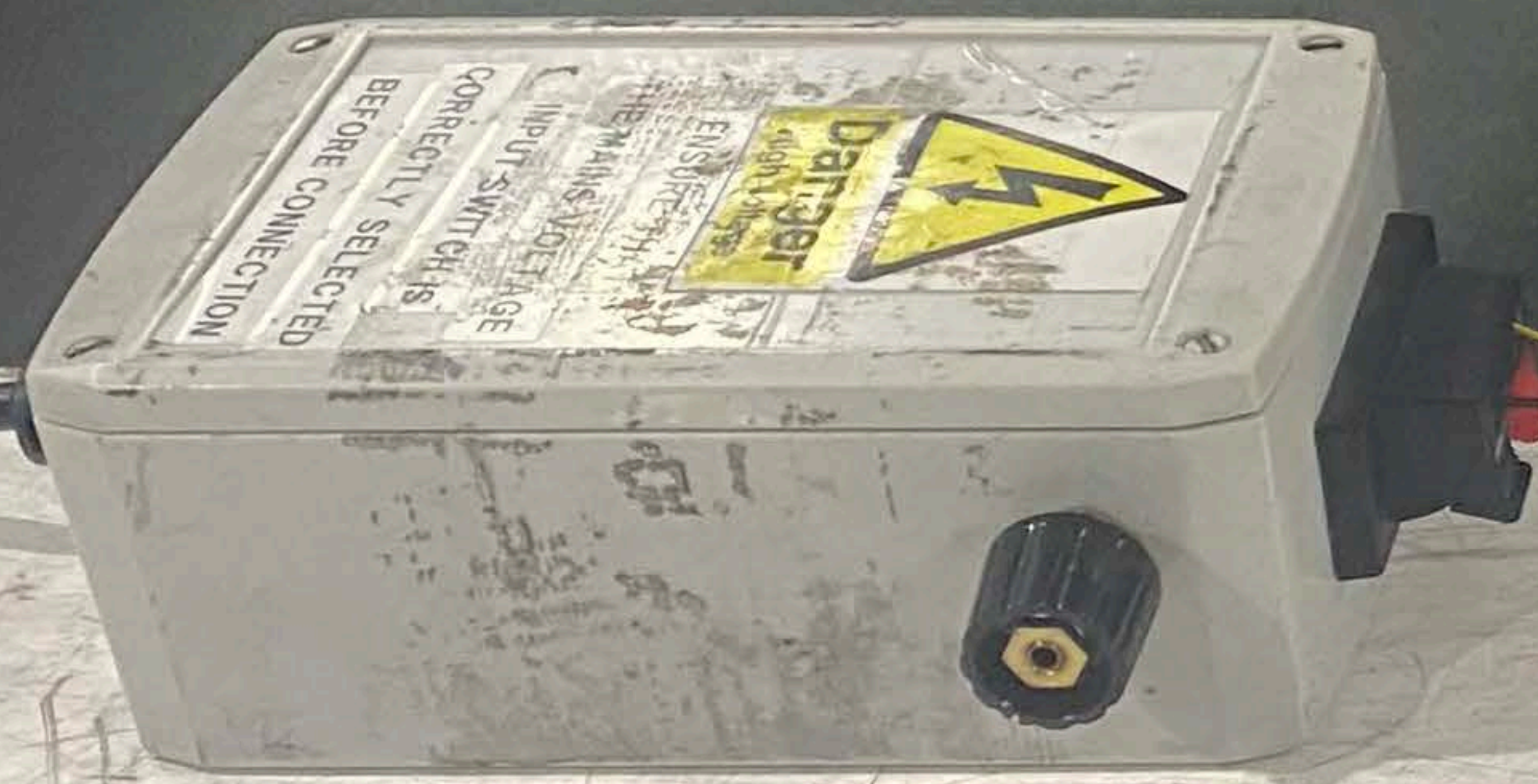
element®

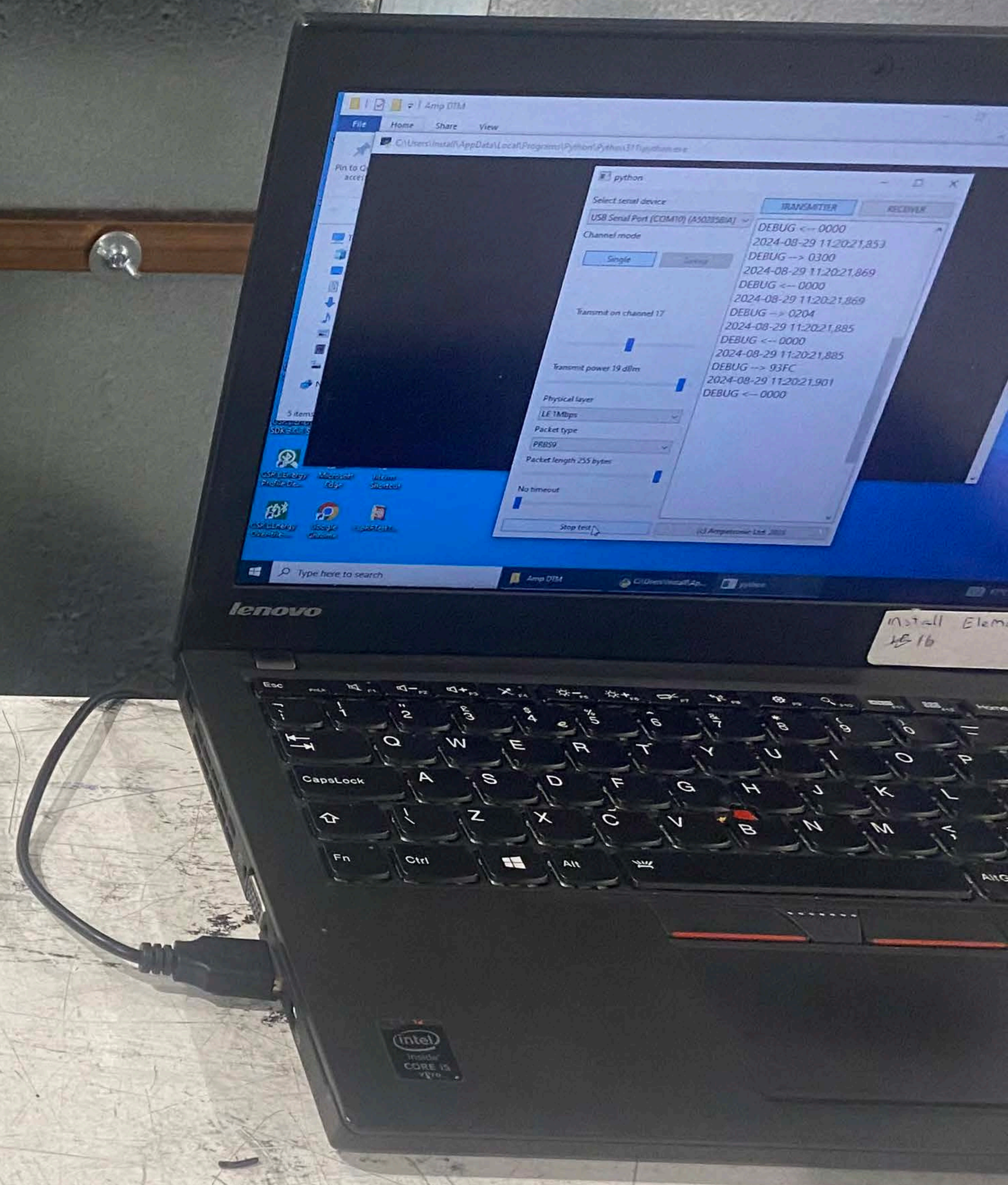
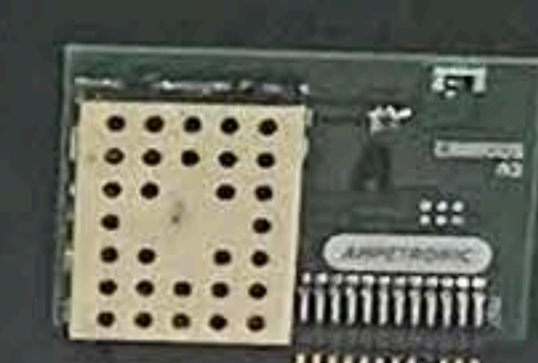
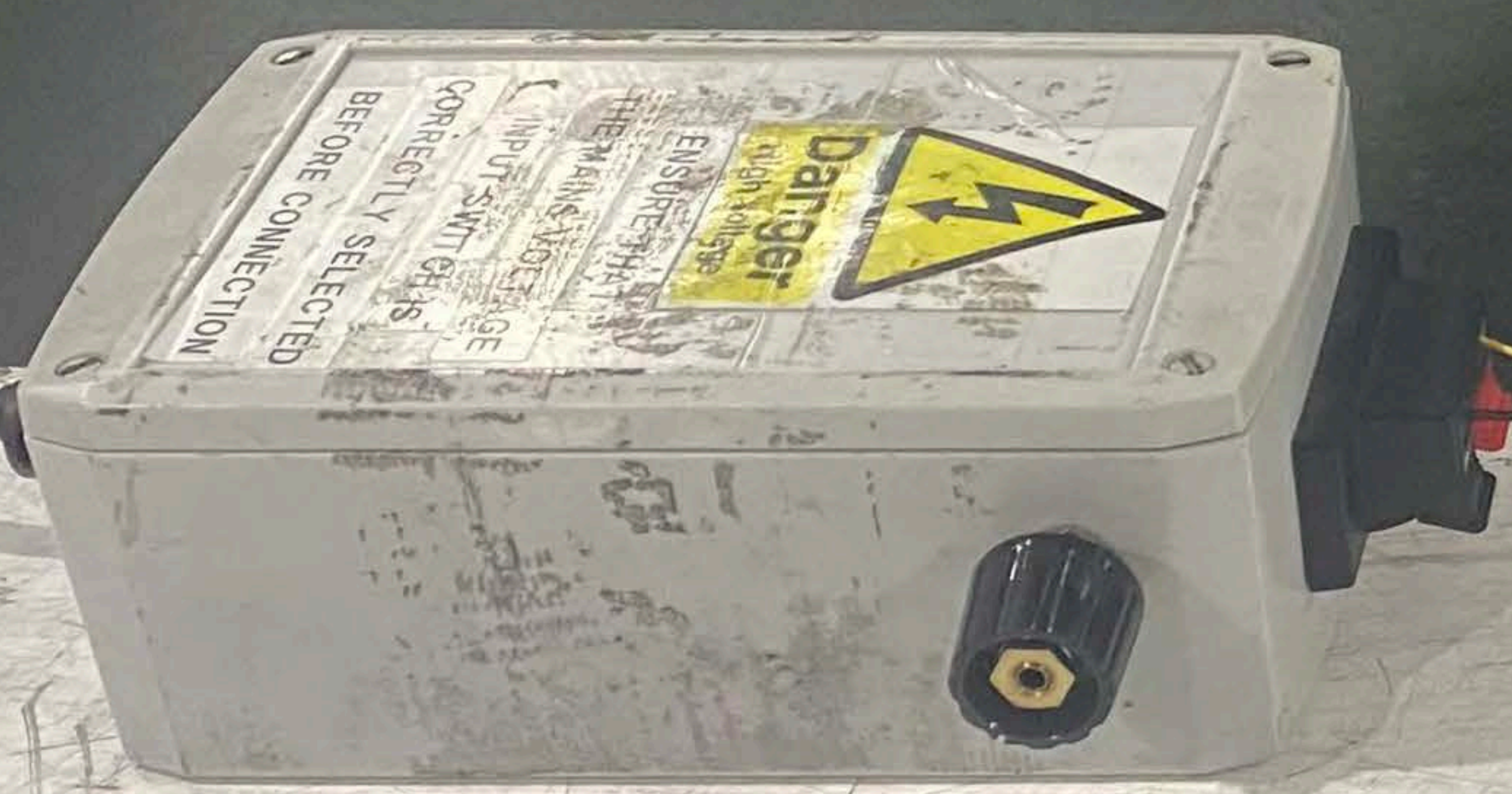




Two documents are pinned to the wall on the left. The one on the left shows a schematic diagram of a circuit board with various components and traces. The one on the right is a grid-lined sheet of paper, possibly a data log or a test plan, with some handwritten notes and a table structure.







python

Select serial device
USB Serial Port (COM10) (AS0306A1)

Channel mode
Single

Transmit on channel 17

Transmit power 19 dBm

Physical layer
LE Mbps

Packet type
P800V

Packet length 255 bytes

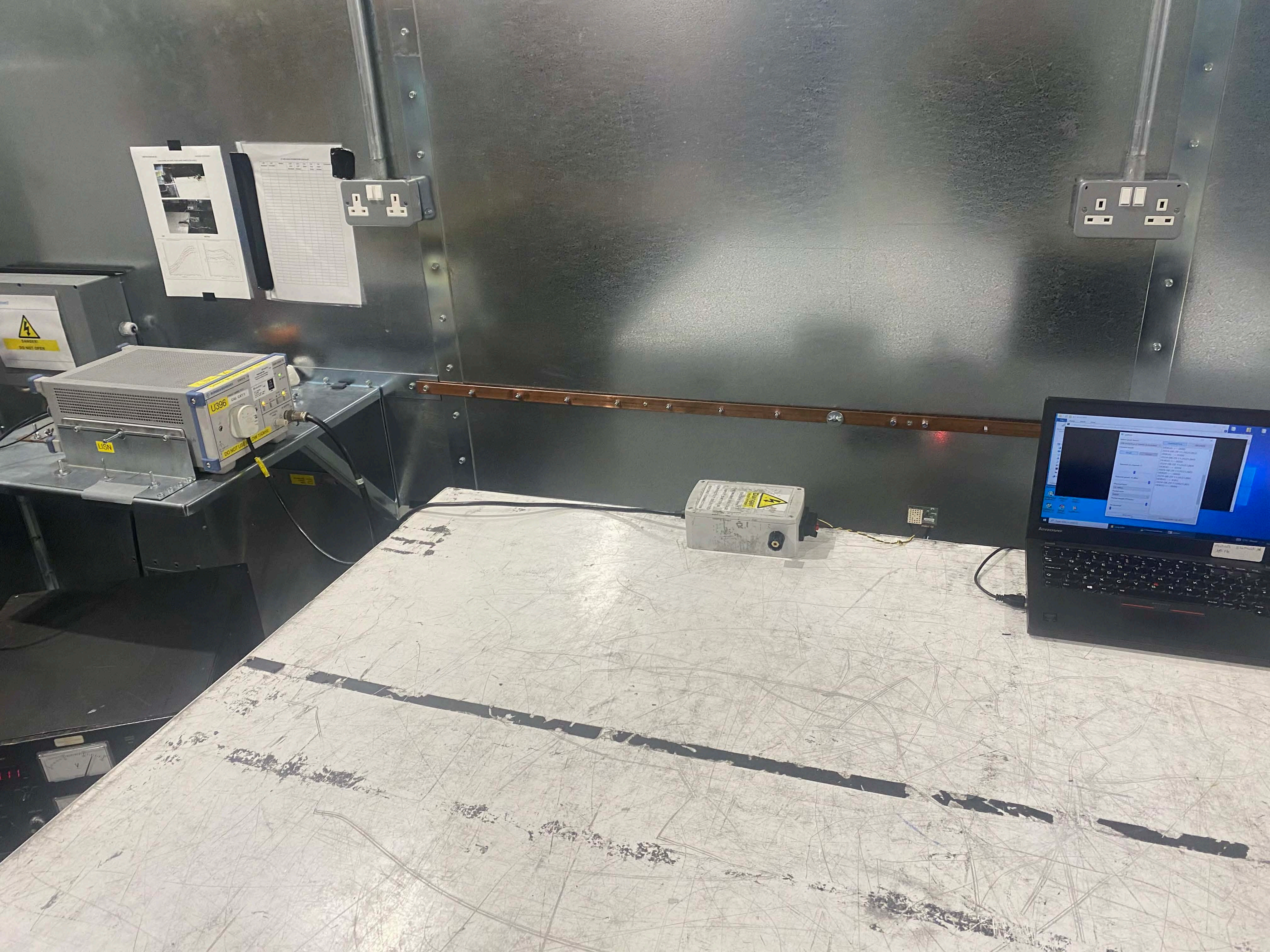
No timeout

TRANSMITTER

RECEIVER

DEBUG <-- 0000
2024-08-29 11:20:21,853
DEBUG --> 0300
2024-08-29 11:20:21,869
DEBUG <-- 0000
2024-08-29 11:20:21,869
DEBUG --> 0204
2024-08-29 11:20:21,885
DEBUG <-- 0000
2024-08-29 11:20:21,885
DEBUG --> 93FC
2024-08-29 11:20:21,901
DEBUG <-- 0000

Small Element
1516



Two documents are pinned to the wall. The left document shows a graph with two curves. The right document is a grid or table.

Electrical outlet with two sockets.

Electrical outlet with two sockets and two switches.

Warning label: **WARNING**
DO NOT OPEN

U396
EMC CA17
DO NOT USE
LISN

Warning label: **WARNING**
DO NOT TOUCH

Laptop screen showing a software interface with various settings and data.

