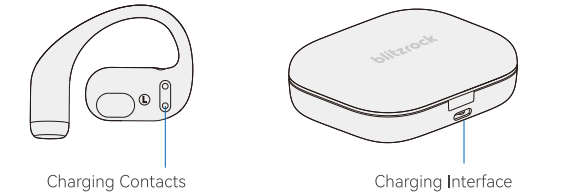
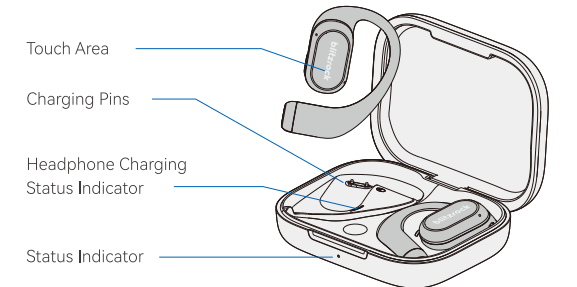
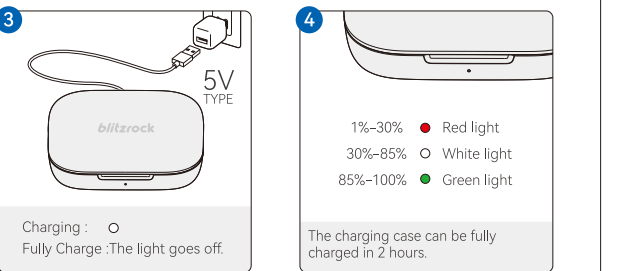
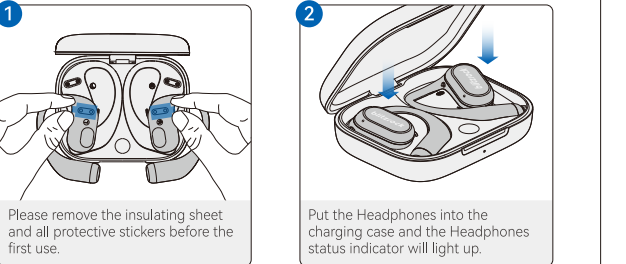


## PRODUCT INTERODUCTION

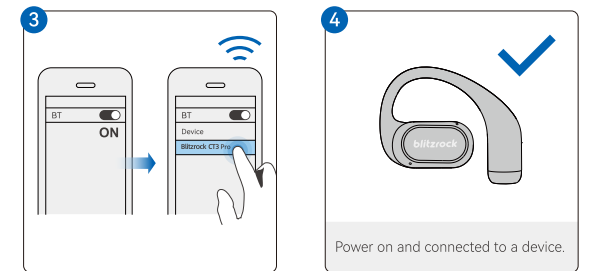
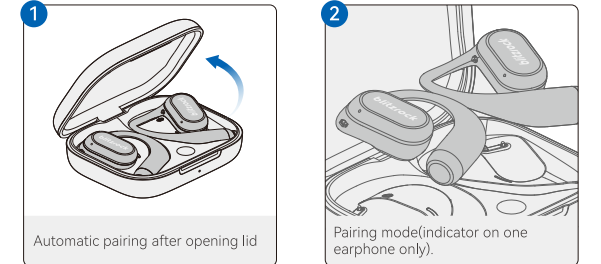


⚠ Please use the provided Type-C Charging Cable to charge.

## CHARGING

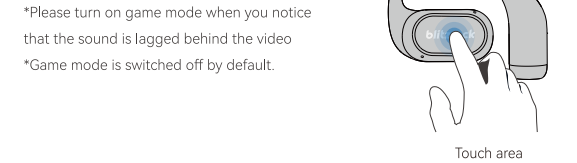


## PAIRING



## FUNCTION

	🎵	📶
👤 (1x) L/R	▶/⏸	📶
👤 (2x) R	⏭	🔄 / 📶
👤 (2x) L	⏮	🔄 / 📶
👤 (3x) L/R	🗣️ Voice Assistant	/
👤 (4x) L/R	🎮 Toggle Game Mode	/
👤 (HOLD L)	🔊-	🔊-
👤 (HOLD R)	🔊+	🔊+



## POWER ON/OFF

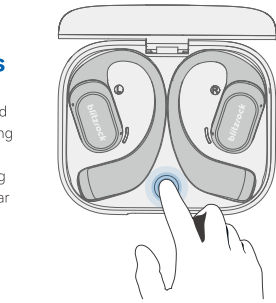
	With Headphone Case	Without Headphone Case
Power On	Open the charging case	Tap and hold for 3 seconds to power on a headphone individually.
Power Off	Close the charging case	Tap and hold for 5 seconds to power off a headphone individually.

## TROUBLE SHOOTING

- 1.Charging case not charging:** Check if the power adapter is working, or try using a different charging cable.
- 2.Earphones not connecting to Bluetooth or Bluetooth signal not found:** Open your phone's settings, delete the Bluetooth pairing records, and then search for the earphones Bluetooth signal to reconnect.
- 3.Earphones won't power on:** Ensure the charging case has power and try charging the earphones for a while before attempting to power them on.

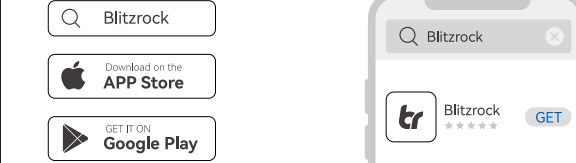
### Restore Factory Settings

Put the earphones into the charging box and press and hold the touch area of the charging box for 8 seconds. When the red LED light outside the charging compartment stays on for 1 second, the clear recording is completed.

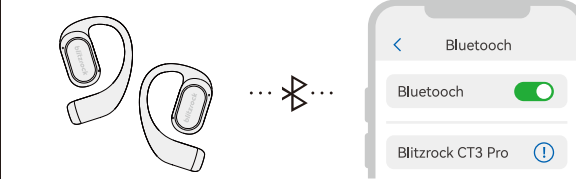


## Blitzrock APP Pairing

**Step1:** Blitzrock APP can be downloaded from the Google Play and Apple APP Store.



**Step2:** Bluetooth pairing with your headphones.



**FCC Warning Statement:** Changes or modifications to this unit not expressly approved by the party responsible for compliance could void the user's authority to operate the equipment. This equipment has been tested and found to comply with the limits for a Class B digital device, pursuant to Part 15 of the FCC Rules. These limits are designed to provide reasonable protection against harmful interference in a residential installation. This equipment generates, uses and can radiate radio frequency energy and, if not installed and used in accordance with the instructions, may cause harmful interference to radio communications.

However, there is no guarantee that interference will not occur in a particular installation. If this equipment does cause harmful interference to radio or television reception, which can be determined by turning the equipment off and on, the user is encouraged to try to correct the interference by one or more of the following measures:

- Reorient or relocate the receiving antenna.
- Increase the separation between the equipment and receiver.
- Connect the equipment into an outlet on a circuit different from that to which the receiver is connected.
- Consult the dealer or an experienced radio/TV technician for help.

This device complies with Part 15 of the FCC Rules. Operation is subject to the following two conditions: (1) this device may not cause harmful interference, and (2) this device must accept any interference received, including interference that may cause undesired operation.

#### **FCC Radiation Exposure Statement**

The device has been evaluated to meet general RF exposure requirement. The device can be used in portable exposure condition without restriction.