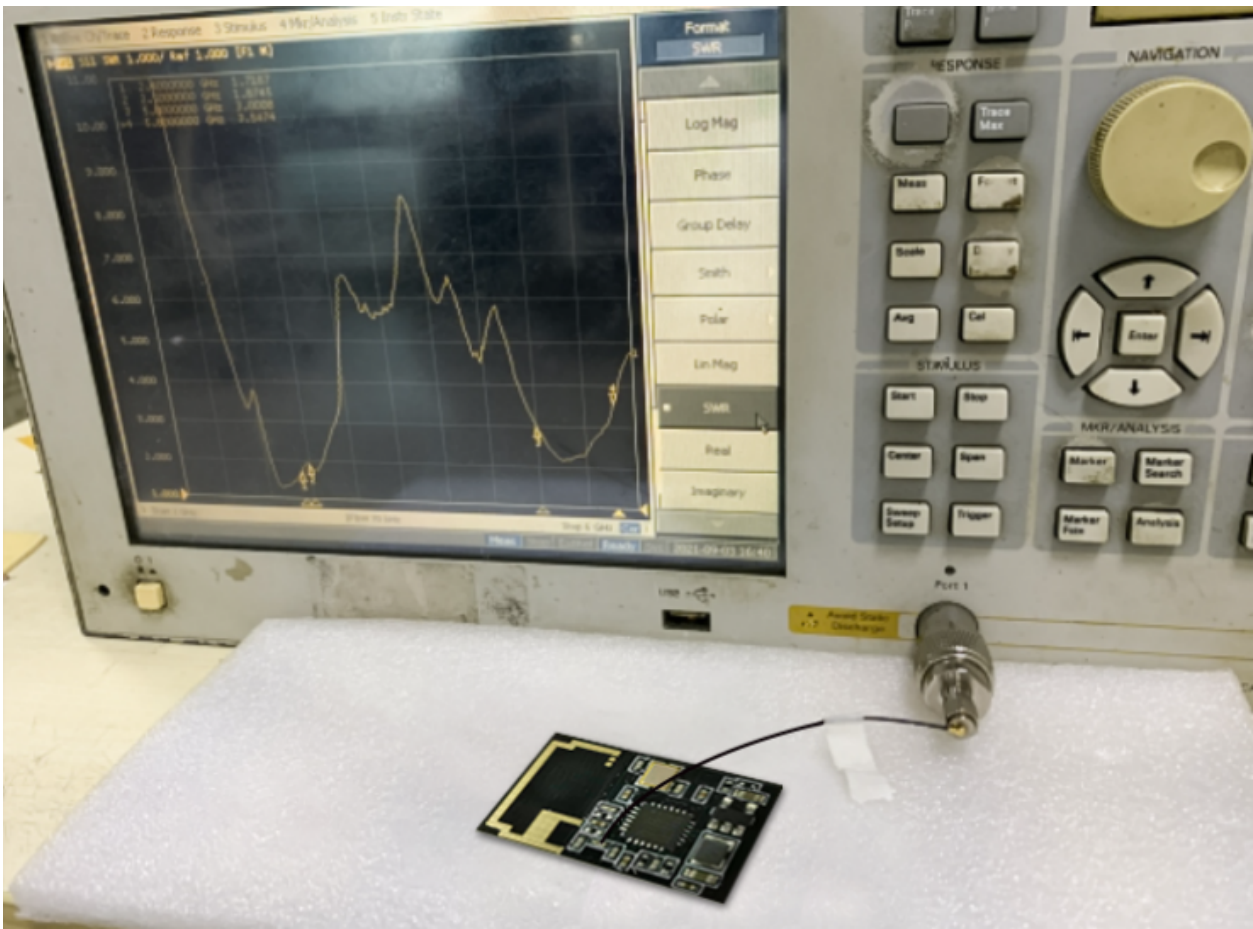


一、Specifications

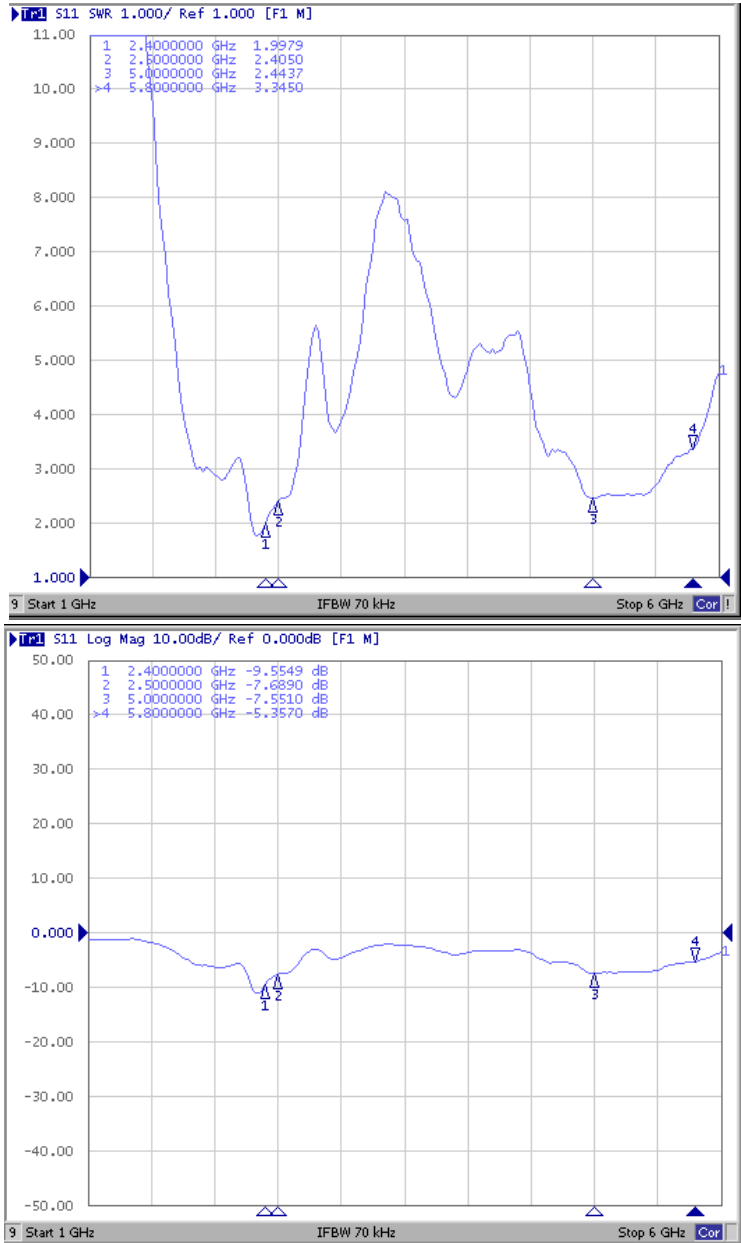
1. Electrical performance parameter

- 频段/Frequency Range.....2400MHz ~2500MHz
- 驻波比/VSWR..... <3
- 效率/Efficiency..... Max59.37%
- 增益/Peak Gain..... Max4.76dBi
- 极化/Polarization..... Linear
- 特性阻抗/Input Impedance..... 50Ω

二、 Antenna standing wave pattern :



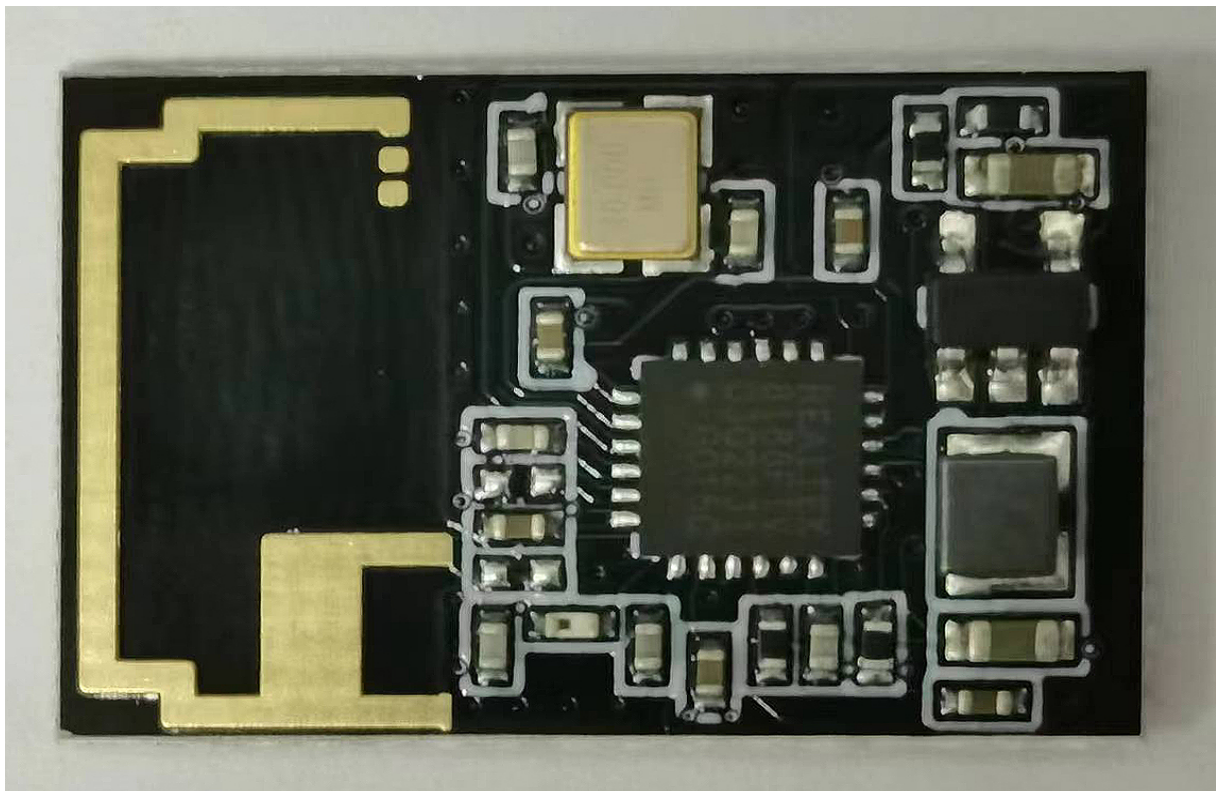
Band	WIFI ANT		
	2400	2500	
R. L (dB)	-9.5	-7.6	
VSWR	2.4	2.5	



三、WIFI Antenna gain efficiency:

Passive Test For 2.4GWIFI ANT										
Freq (MHz)	Effi (%)	Effi (dB)	Gain (dBi)	Gain (dBd)	UHS (%)	DHIS (%)	Max (dB)	Min (dB)	Attenut Hor	Attenut Ver
2400	61.52	-2.11	2.22	0.07	35.571	25.949	2.22	-27.55	48.51	48.38
2410	64.06	-1.93	2.29	0.14	36.742	27.314	2.29	-25.53	48.83	48.65
2420	66.12	-1.8	2.38	0.23	37.612	28.512	2.38	-22.28	49.05	49
2430	65.81	-1.82	2.26	0.11	37.346	28.461	2.26	-20.6	49.05	48.89
2440	65.35	-1.85	2.02	-0.13	37.17	28.18	2.02	-20.01	49.08	48.97
2450	65.38	-1.85	2.07	-0.08	37.527	27.856	2.07	-20.5	49.01	48.85
2460	64.41	-1.91	1.98	-0.17	37.405	27.004	1.98	-22.62	48.86	48.7
2470	63.62	-1.96	2.02	-0.13	37.359	26.262	2.02	-25.86	48.86	48.78
2480	67.12	-1.73	2.4	0.25	39.779	27.344	2.4	-24.33	49.29	49.19
2490	73.47	-1.34	2.97	0.82	43.799	29.668	2.97	-20.77	49.92	49.75
2500	75.94	-1.2	3.2	1.05	45.483	30.452	3.2	-20.26	49.95	49.77

四、Product picture:



五、Apple chart: ANT1- 2.4WiFi

