



Conducted Emission Method

Test Result

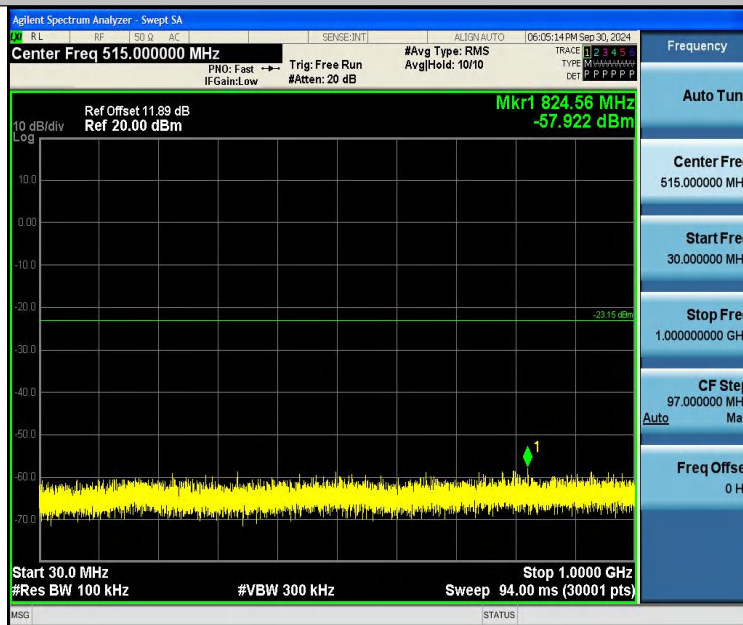
TestMode	Antenna	Frequency[MHz]	FreqRange [MHz]	RefLevel [dBm]	Result [dBm]	Limit [dBm]	Verdict
DH5	Ant1	2402	0~Reference	-3.15	-3.15	---	PASS
DH5	Ant1	2402	30~1000	-3.15	-57.92	≤-23.15	PASS
DH5	Ant1	2402	1000~26500	-3.15	-41.73	≤-23.15	PASS
DH5	Ant1	2441	0~Reference	-2.52	-2.52	---	PASS
DH5	Ant1	2441	30~1000	-2.52	-58.69	≤-22.52	PASS
DH5	Ant1	2441	1000~26500	-2.52	-42.2	≤-22.52	PASS
DH5	Ant1	2480	0~Reference	-3.07	-3.07	---	PASS
DH5	Ant1	2480	30~1000	-3.07	-58.32	≤-23.07	PASS
DH5	Ant1	2480	1000~26500	-3.07	-42.18	≤-23.07	PASS
2DH5	Ant1	2402	0~Reference	-3.26	-3.26	---	PASS
2DH5	Ant1	2402	30~1000	-3.26	-58.29	≤-23.26	PASS
2DH5	Ant1	2402	1000~26500	-3.26	-41.54	≤-23.26	PASS
2DH5	Ant1	2441	0~Reference	-2.63	-2.63	---	PASS
2DH5	Ant1	2441	30~1000	-2.63	-57.92	≤-22.63	PASS
2DH5	Ant1	2441	1000~26500	-2.63	-41.9	≤-22.63	PASS
2DH5	Ant1	2480	0~Reference	-2.92	-2.92	---	PASS
2DH5	Ant1	2480	30~1000	-2.92	-58.25	≤-22.92	PASS
2DH5	Ant1	2480	1000~26500	-2.92	-42.07	≤-22.92	PASS
3DH5	Ant1	2402	0~Reference	-2.59	-2.59	---	PASS
3DH5	Ant1	2402	30~1000	-2.59	-57.76	≤-22.59	PASS
3DH5	Ant1	2402	1000~26500	-2.59	-42.9	≤-22.59	PASS
3DH5	Ant1	2441	0~Reference	-2.33	-2.33	---	PASS
3DH5	Ant1	2441	30~1000	-2.33	-58.18	≤-22.33	PASS
3DH5	Ant1	2441	1000~26500	-2.33	-41.72	≤-22.33	PASS
3DH5	Ant1	2480	0~Reference	-2.90	-2.90	---	PASS
3DH5	Ant1	2480	30~1000	-2.90	-58.15	≤-22.9	PASS
3DH5	Ant1	2480	1000~26500	-2.90	-41.88	≤-22.9	PASS



Test Graphs:



DH5-Ant1-2402-0~Reference-PASS



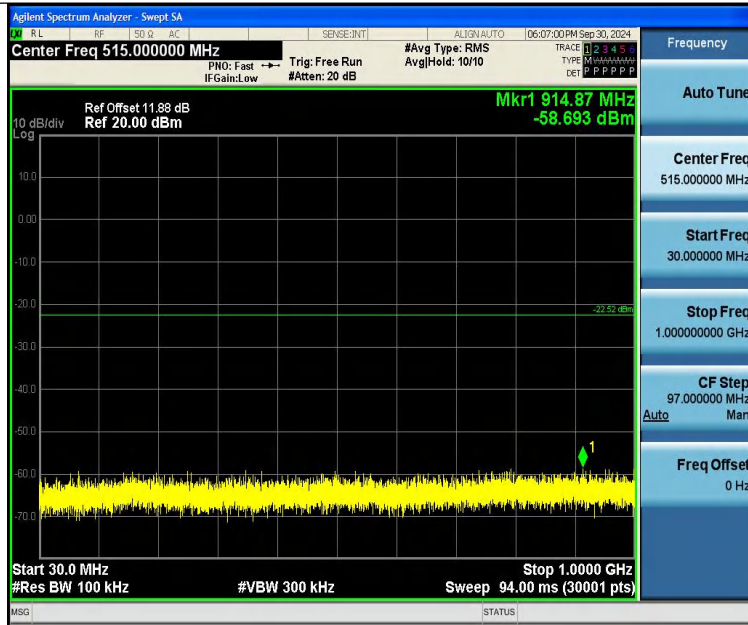
DH5-Ant1-2402-30~1000-PASS



DH5-Ant1-2402-1000~26500-PASS



DH5-Ant1-2441-0~Reference-PASS



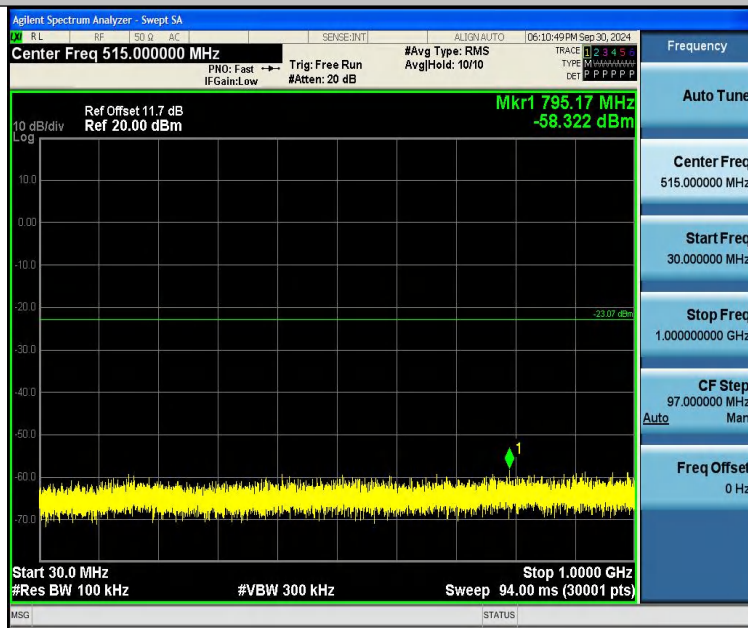
DH5-Ant1-2441-30~1000-PASS



DH5-Ant1-2441-1000~26500-PASS



DH5-Ant1-2480-0~Reference-PASS



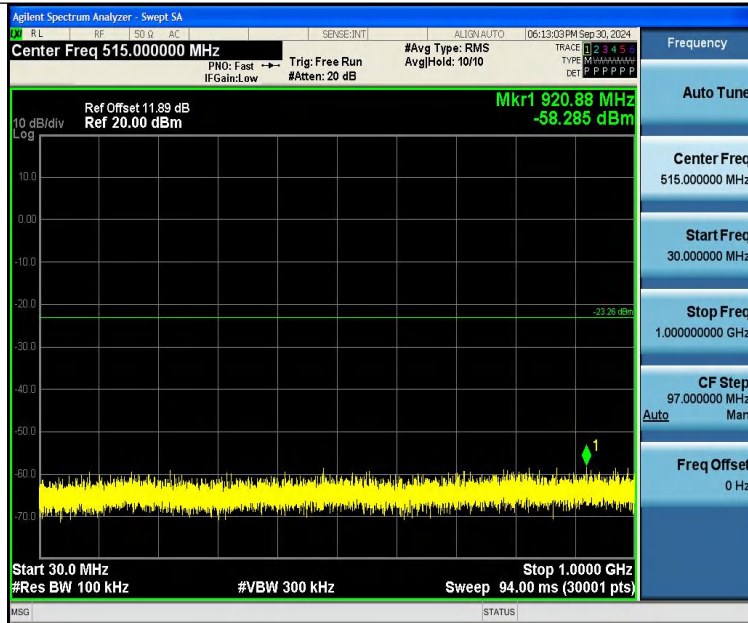
DH5-Ant1-2480-30~1000-PASS



DH5-Ant1-2480-1000~26500-PASS



2DH5-Ant1-2402-0~Reference-PASS



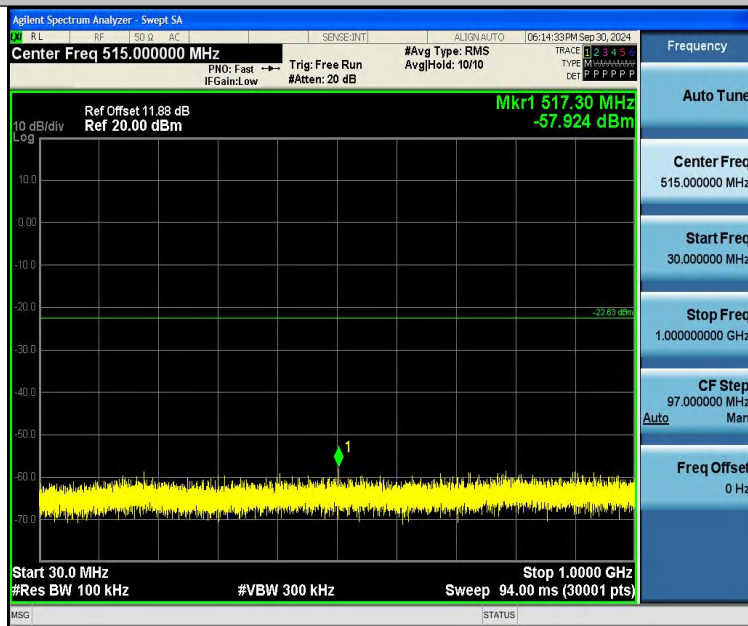
2DH5-Ant1-2402-30~1000-PASS



2DH5-Ant1-2402-1000~26500-PASS



2DH5-Ant1-2441-0~Reference-PASS



2DH5-Ant1-2441-30~1000-PASS

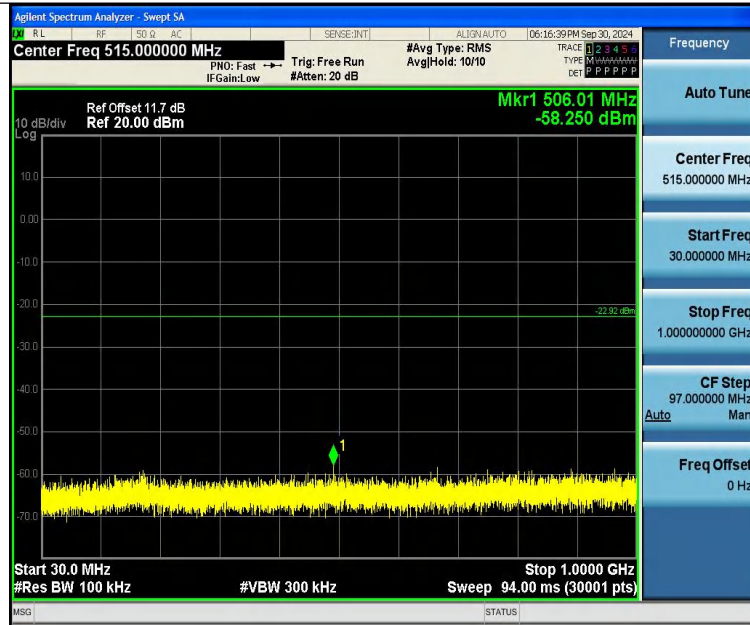




2DH5-Ant1-2441-1000~26500-PASS



2DH5-Ant1-2480-0~Reference-PASS



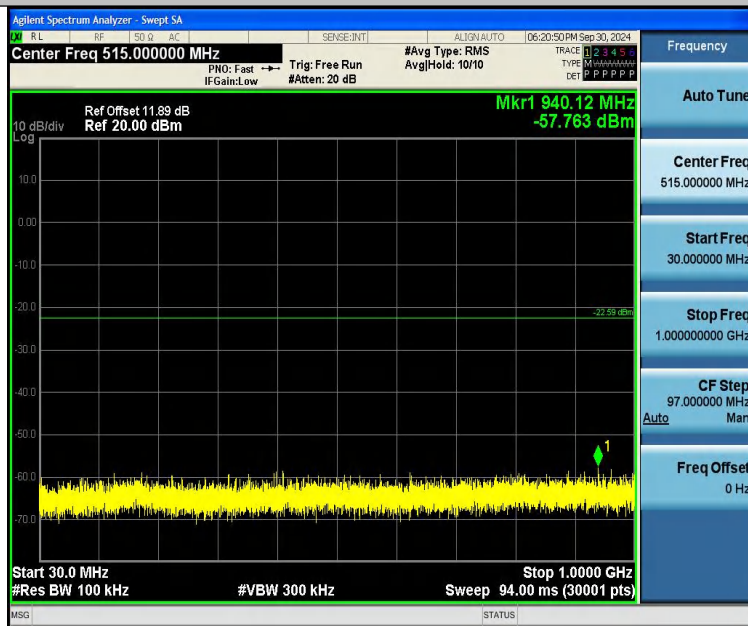
2DH5-Ant1-2480-30~1000-PASS



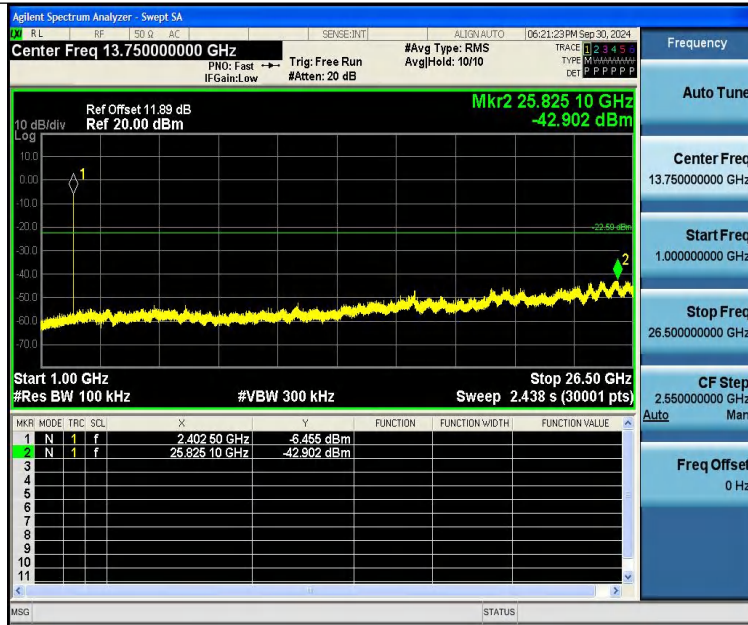
2DH5-Ant1-2480-1000~26500-PASS



3DH5-Ant1-2402-0~Reference-PASS



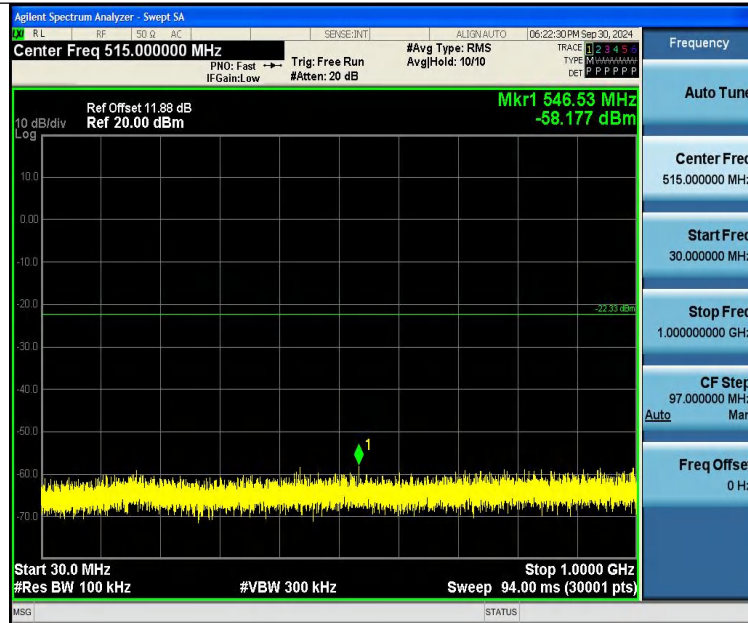
3DH5-Ant1-2402-30~1000-PASS



3DH5-Ant1-2402-1000~26500-PASS



3DH5-Ant1-2441-0~Reference-PASS



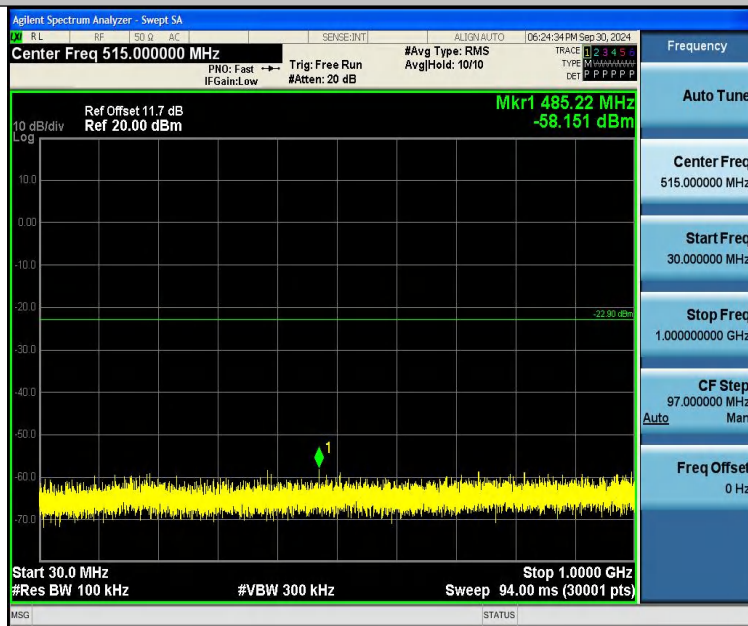
3DH5-Ant1-2441-30~1000-PASS



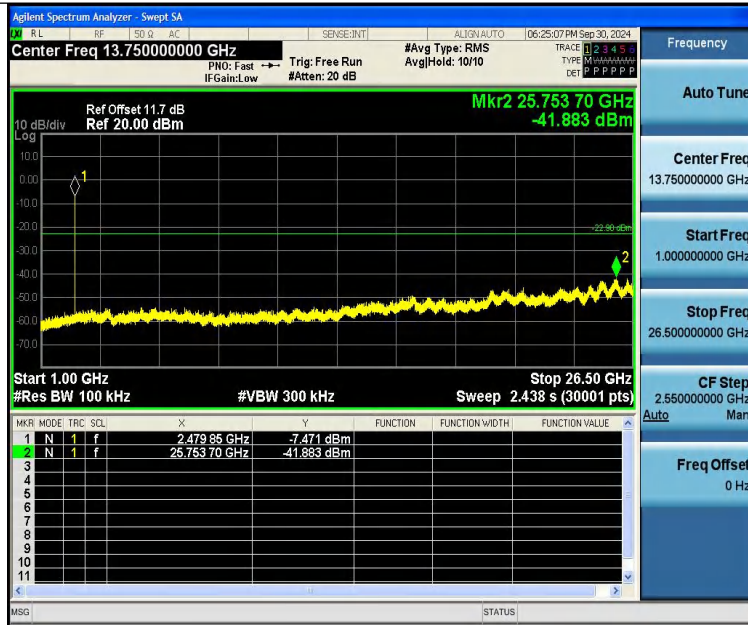
3DH5-Ant1-2441-1000~26500-PASS



3DH5-Ant1-2480-0~Reference-PASS



3DH5-Ant1-2480-30~1000-PASS



3DH5-Ant1-2480-1000~26500-PASS



## 14 Antenna Requirement

### 14.1 Test Standard and Requirement

Test Standard	FCC Part15 Section 15.203 /247(c)
Requirement	<p>1) 15.203 requirement:</p> <p>An intentional radiator shall be designed to ensure that no antenna other than that furnished by the responsible party shall be used with the device. The use of a permanently attached antenna or of an antenna that uses a unique coupling to the intentional radiator, the manufacturer may design the unit so that a broken antenna can be replaced by the user, but the use of a standard antenna jack or electrical connector is prohibited.</p> <p>2) 15.247(c) (1)(i) requirement:</p> <p>Systems operating in the 2400-2483.5 MHz band that is used exclusively for fixed. Point-to-point operations may employ transmitting antennas with directional gain greater than 6dBi provided the maximum conducted output power of the intentional radiator is reduced by 1 dB for every 3 dB that the directional gain of the antenna exceeds 6 dBi.</p>

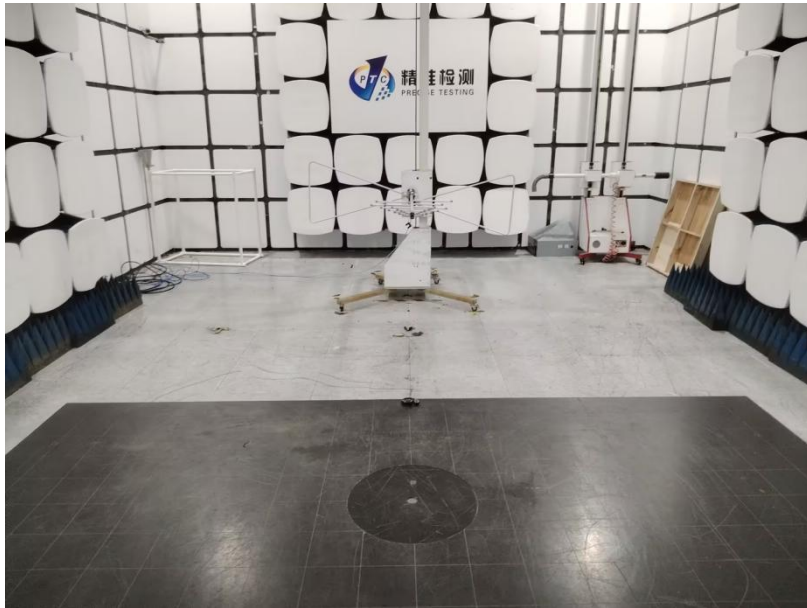
### 14.2 Antenna Connected Construction

The antenna is Ceramic Antenna which permanently attached, and the best case gain of the antenna is 2.7 dBi. It complies with the standard requirement.



## 15 APPENDIX I -- TEST SETUP PHOTOGRAPH

Radiated Emissions  
From 30M-1GHz



Above 1GHz



## 16 APPENDIX II -- EUT PHOTOGRAPH

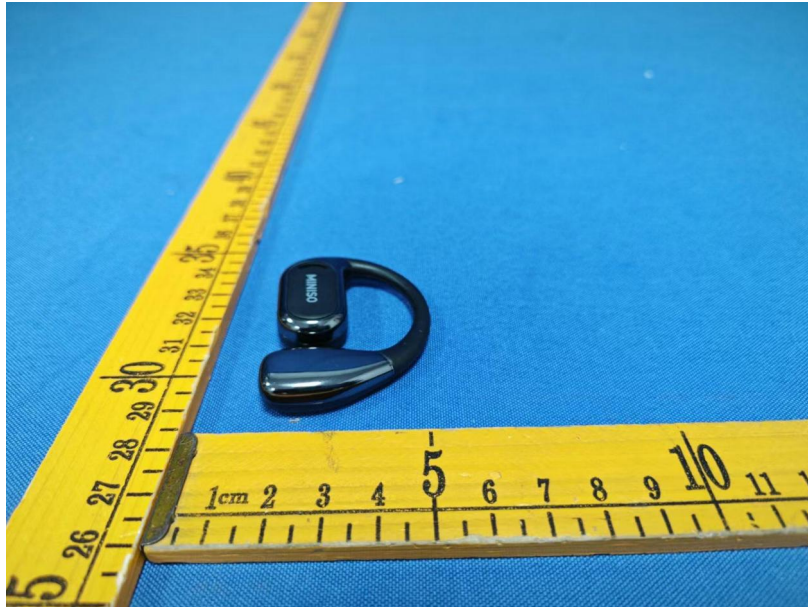


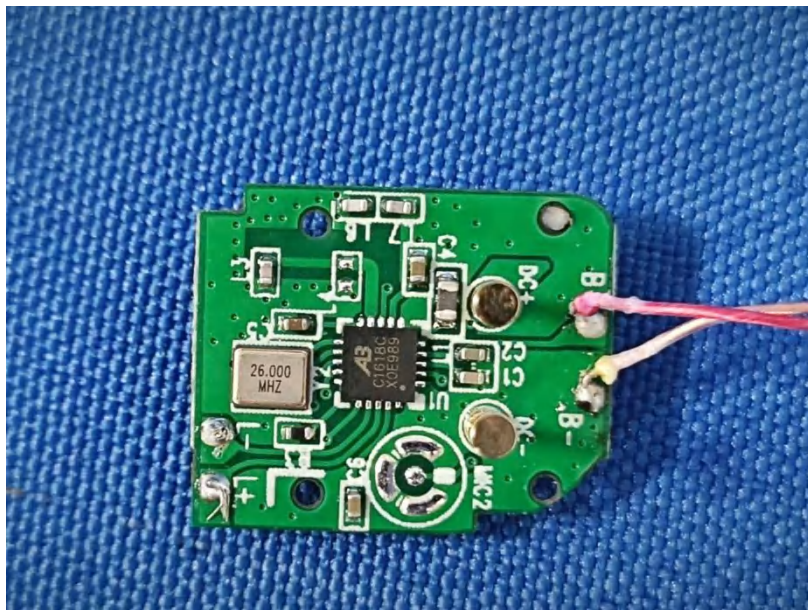


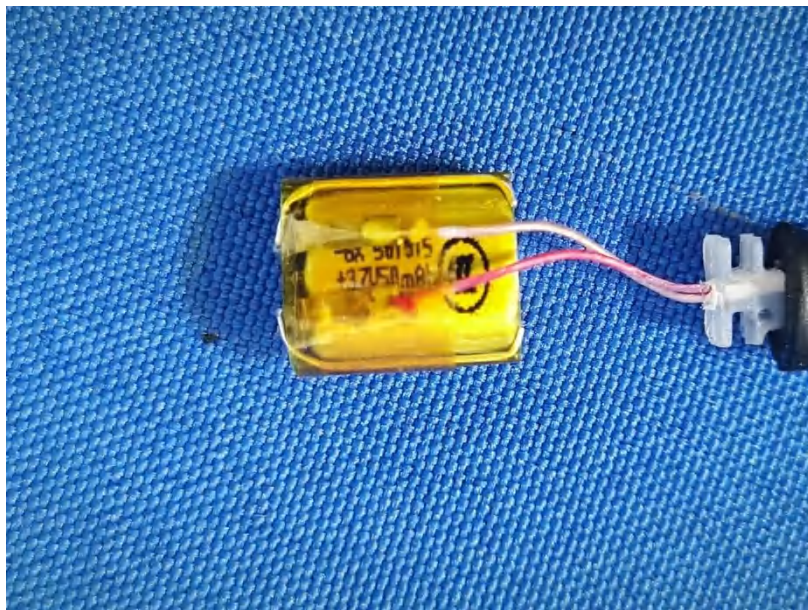
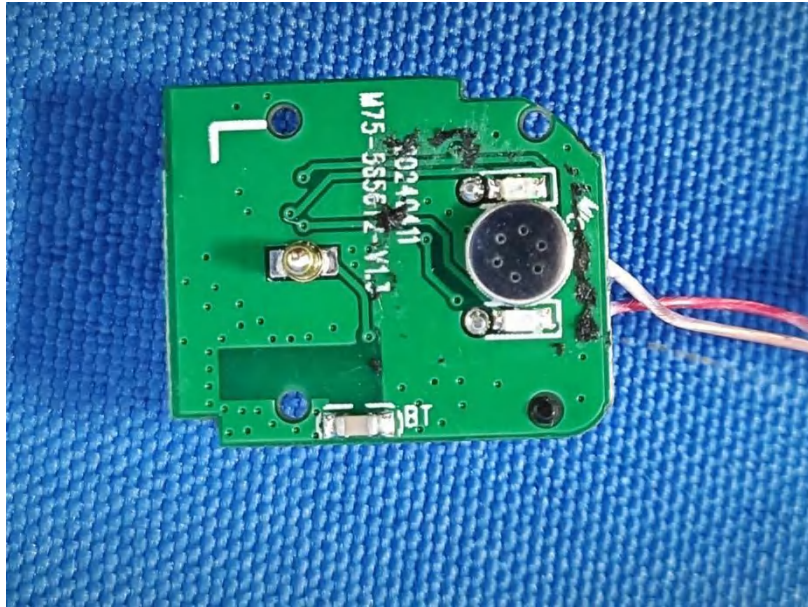
L:



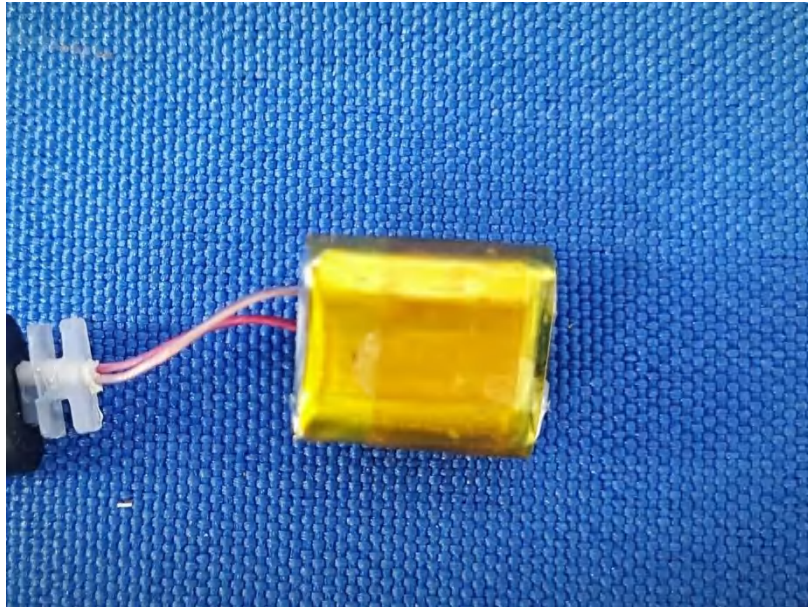












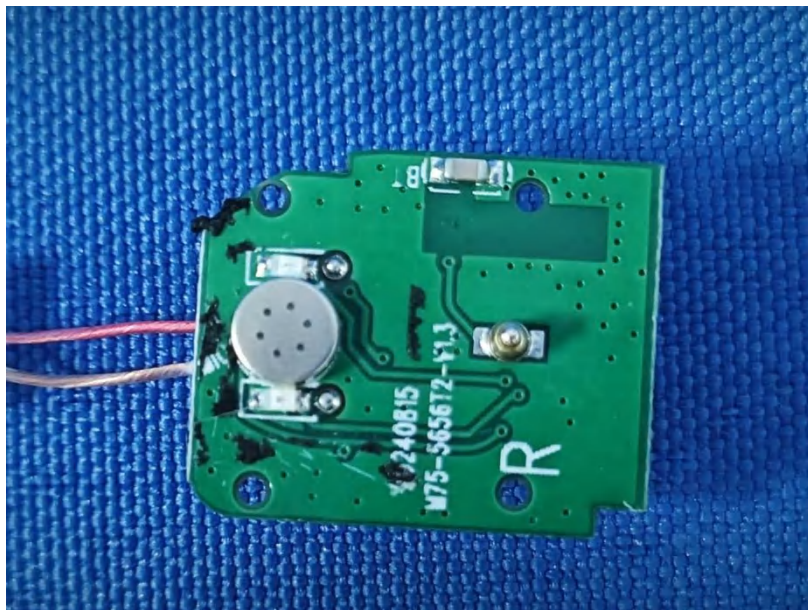
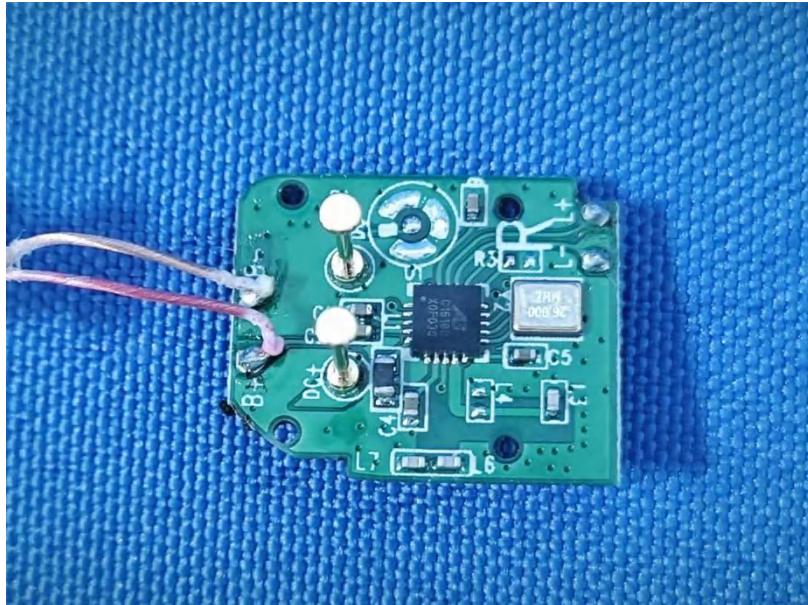
R:

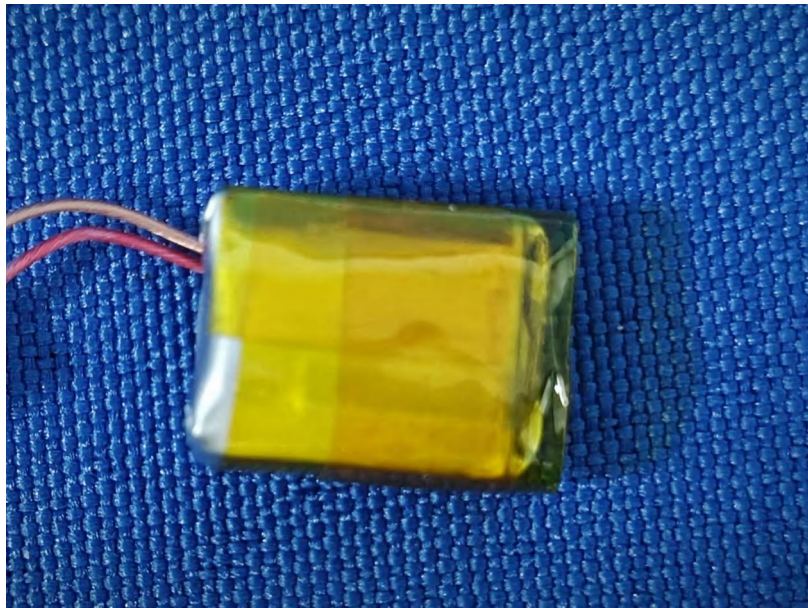
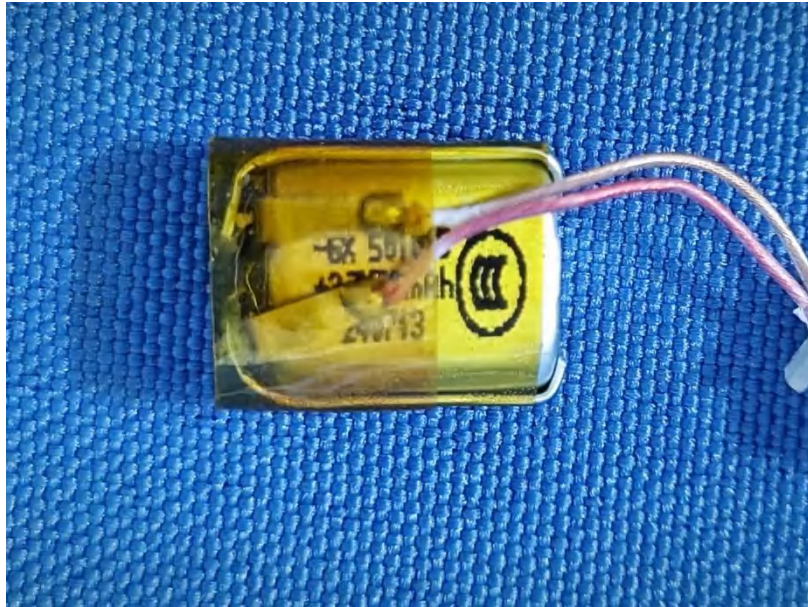












**\*\*\*\*\*THE END REPORT\*\*\*\*\***