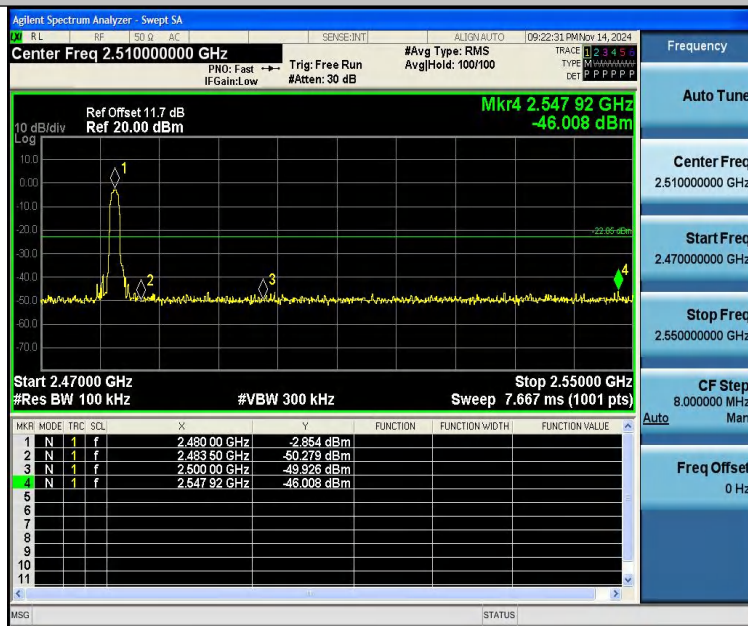
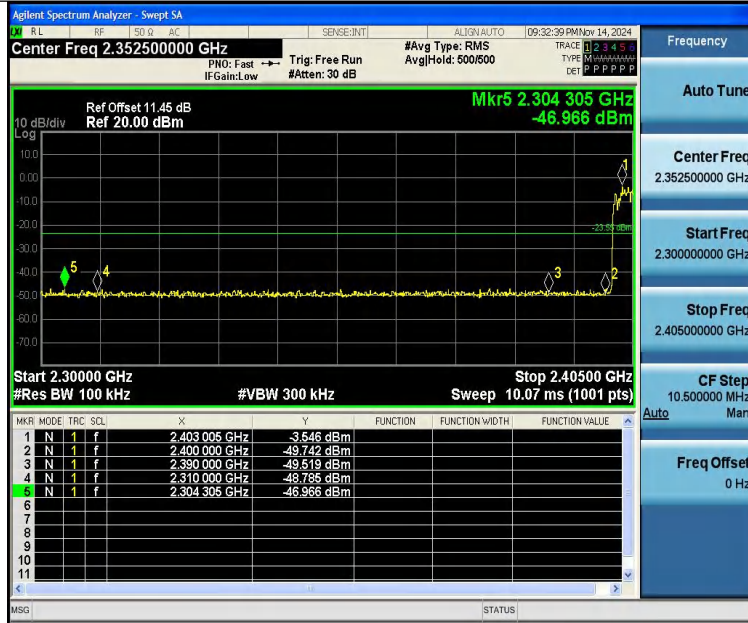


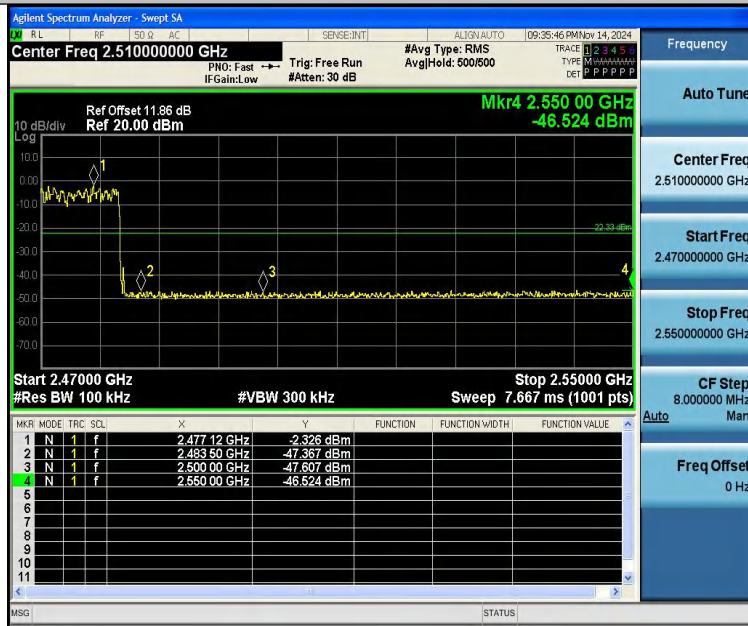
3DH5-Ant1-2402-PASS



3DH5-Ant1-2480-PASS



3DH5-Ant1-Hop_2402-PASS



3DH5-Ant1-Hop_2480-PASS



Conducted Emission Method

Test Result

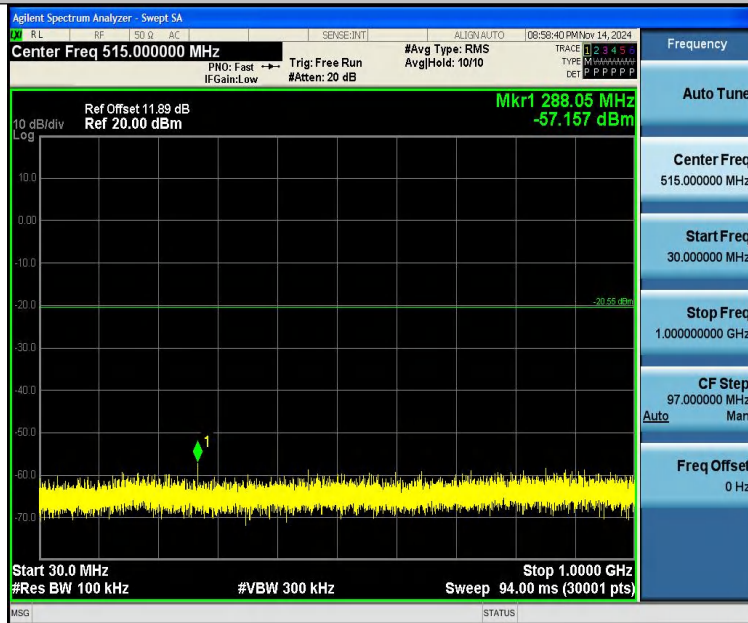
TestMode	Antenna	Frequency[MHz]	FreqRange [MHz]	RefLevel [dBm]	Result [dBm]	Limit [dBm]	Verdict
DH5	Ant1	2402	0~Reference	-0.55	-0.55	---	PASS
DH5	Ant1	2402	30~1000	-0.55	-57.16	≤-20.55	PASS
DH5	Ant1	2402	1000~26500	-0.55	-40.27	≤-20.55	PASS
DH5	Ant1	2441	0~Reference	0.29	0.29	---	PASS
DH5	Ant1	2441	30~1000	0.29	-58.05	≤-19.71	PASS
DH5	Ant1	2441	1000~26500	0.29	-33.68	≤-19.71	PASS
DH5	Ant1	2480	0~Reference	-0.48	-0.48	---	PASS
DH5	Ant1	2480	30~1000	-0.48	-57.98	≤-20.48	PASS
DH5	Ant1	2480	1000~26500	-0.48	-36.84	≤-20.48	PASS
2DH5	Ant1	2402	0~Reference	-1.23	-1.23	---	PASS
2DH5	Ant1	2402	30~1000	-1.23	-57.7	≤-21.23	PASS
2DH5	Ant1	2402	1000~26500	-1.23	-39.27	≤-21.23	PASS
2DH5	Ant1	2441	0~Reference	-1.25	-1.25	---	PASS
2DH5	Ant1	2441	30~1000	-1.25	-58.37	≤-21.25	PASS
2DH5	Ant1	2441	1000~26500	-1.25	-39.33	≤-21.25	PASS
2DH5	Ant1	2480	0~Reference	-0.74	-0.74	---	PASS
2DH5	Ant1	2480	30~1000	-0.74	-58.55	≤-20.74	PASS
2DH5	Ant1	2480	1000~26500	-0.74	-38.5	≤-20.74	PASS
3DH5	Ant1	2402	0~Reference	-0.64	-0.64	---	PASS
3DH5	Ant1	2402	30~1000	-0.64	-57.4	≤-20.64	PASS
3DH5	Ant1	2402	1000~26500	-0.64	-40.21	≤-20.64	PASS
3DH5	Ant1	2441	0~Reference	-0.80	-0.80	---	PASS
3DH5	Ant1	2441	30~1000	-0.80	-57.54	≤-20.8	PASS
3DH5	Ant1	2441	1000~26500	-0.80	-42.3	≤-20.8	PASS
3DH5	Ant1	2480	0~Reference	-0.16	-0.16	---	PASS
3DH5	Ant1	2480	30~1000	-0.16	-58.28	≤-20.16	PASS
3DH5	Ant1	2480	1000~26500	-0.16	-38.96	≤-20.16	PASS



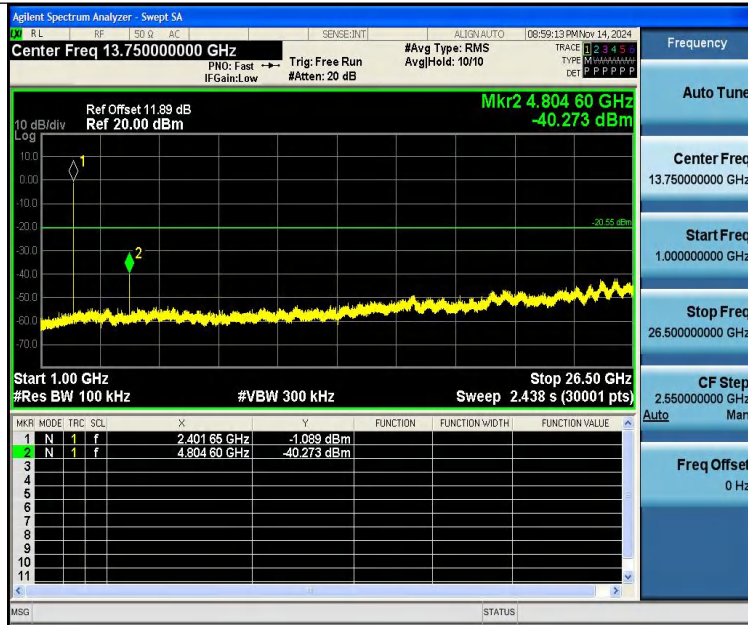
Test Graphs:



DH5-Ant1-2402-0~Reference-PASS



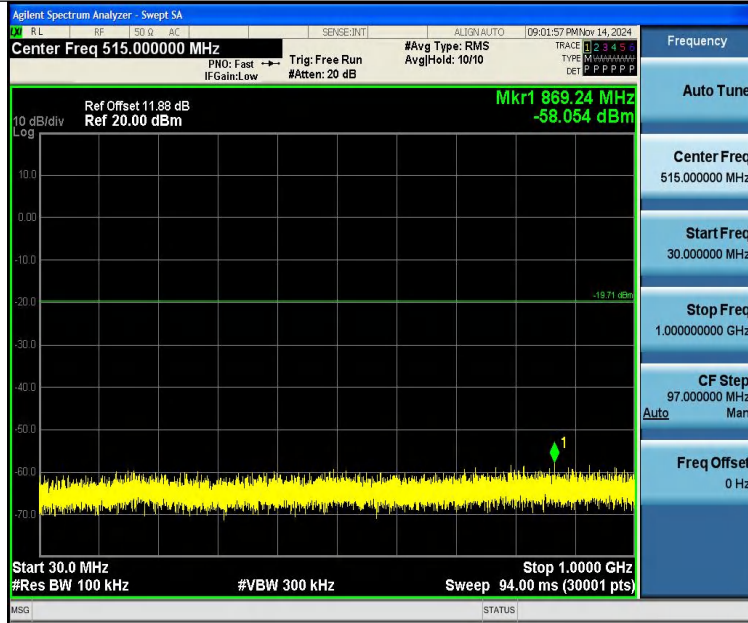
DH5-Ant1-2402-30~1000-PASS



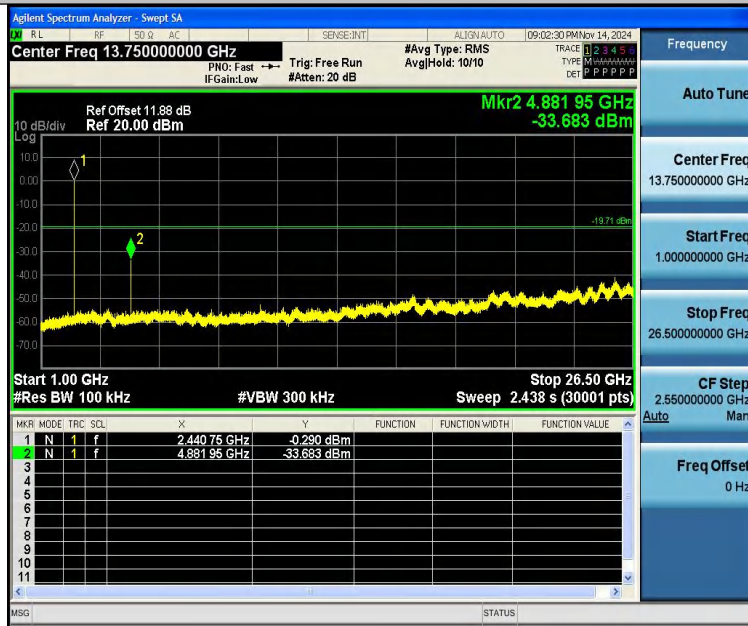
DH5-Ant1-2402-1000~26500-PASS



DH5-Ant1-2441-0~Reference-PASS



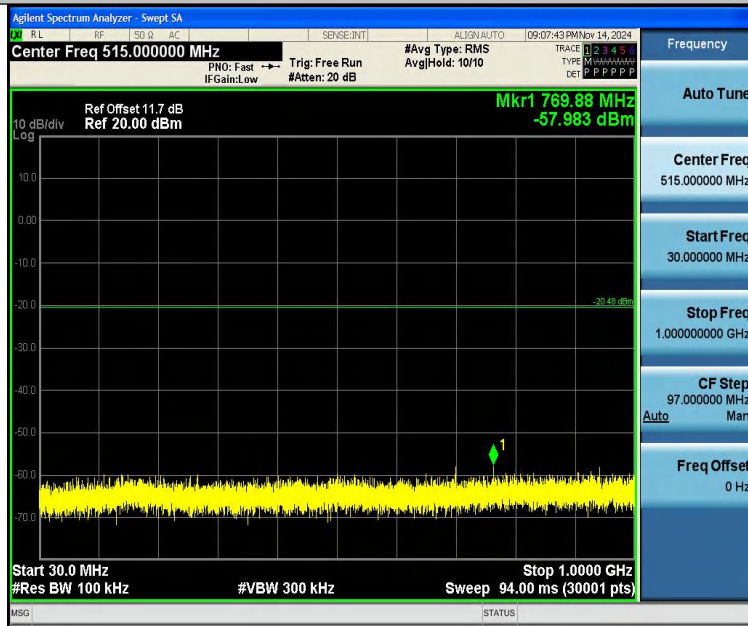
DH5-Ant1-2441-30~1000-PASS



DH5-Ant1-2441-1000~26500-PASS



DH5-Ant1-2480-0~Reference-PASS



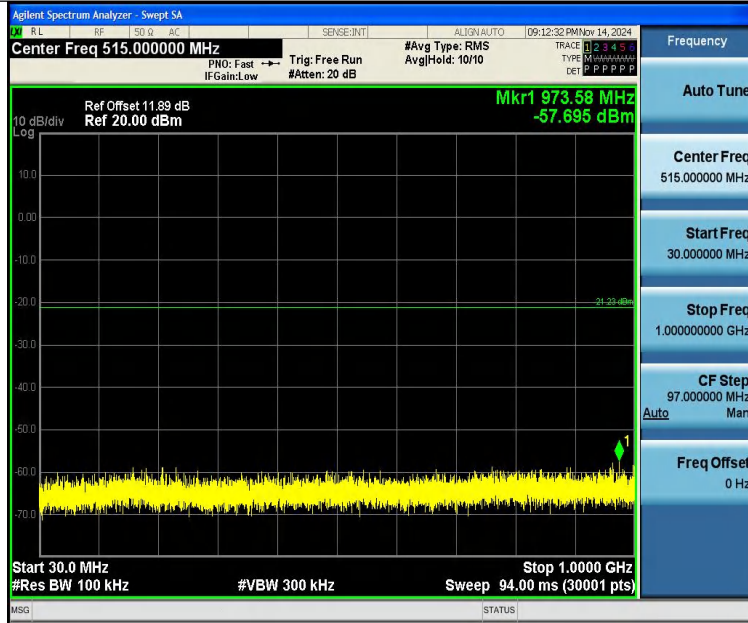
DH5-Ant1-2480-30~1000-PASS



DH5-Ant1-2480-1000~2650-PASS



2DH5-Ant1-2402-0~Reference-PASS



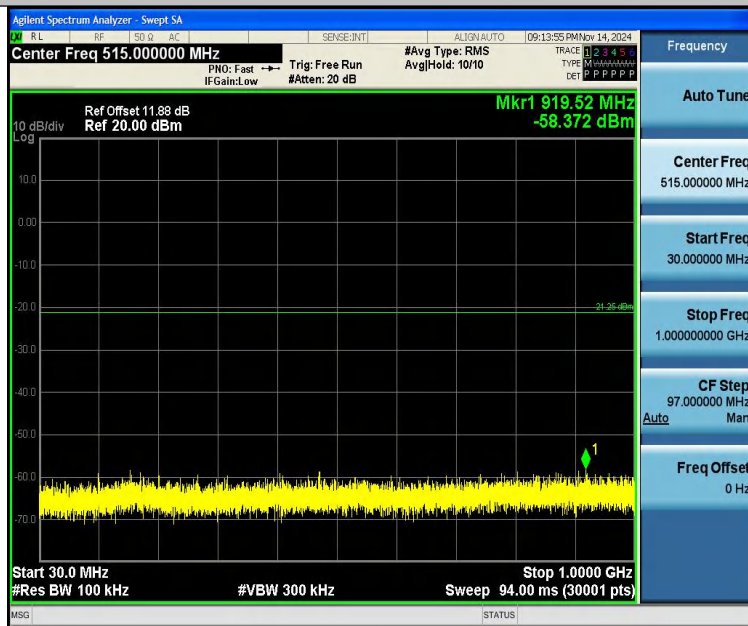
2DH5-Ant1-2402-30~1000-PASS



2DH5-Ant1-2402-1000~26500-PASS



2DH5-Ant1-2441-0~Reference-PASS



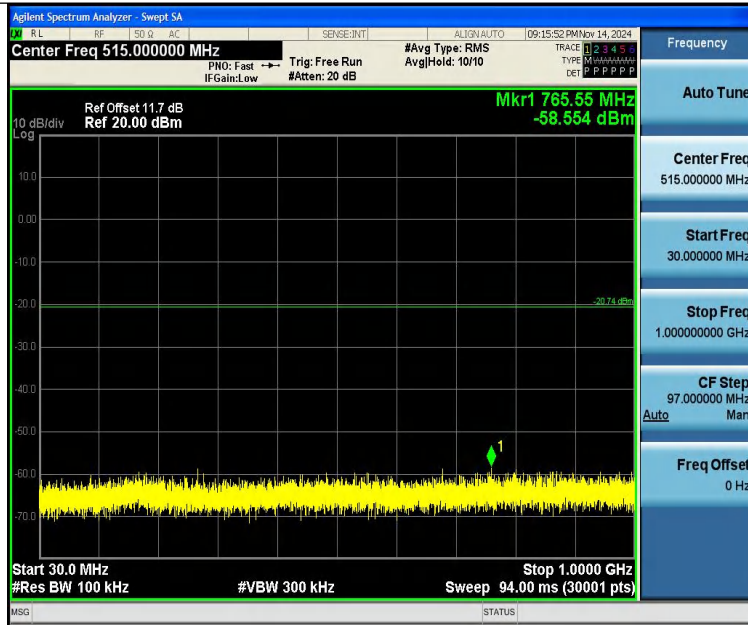
2DH5-Ant1-2441-30~1000-PASS



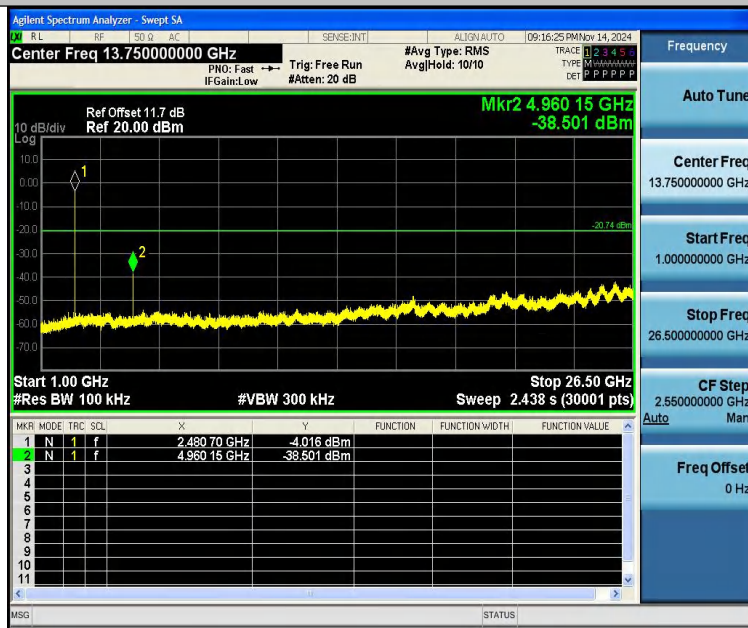
2DH5-Ant1-2441-1000~26500-PASS



2DH5-Ant1-2480-0~Reference-PASS



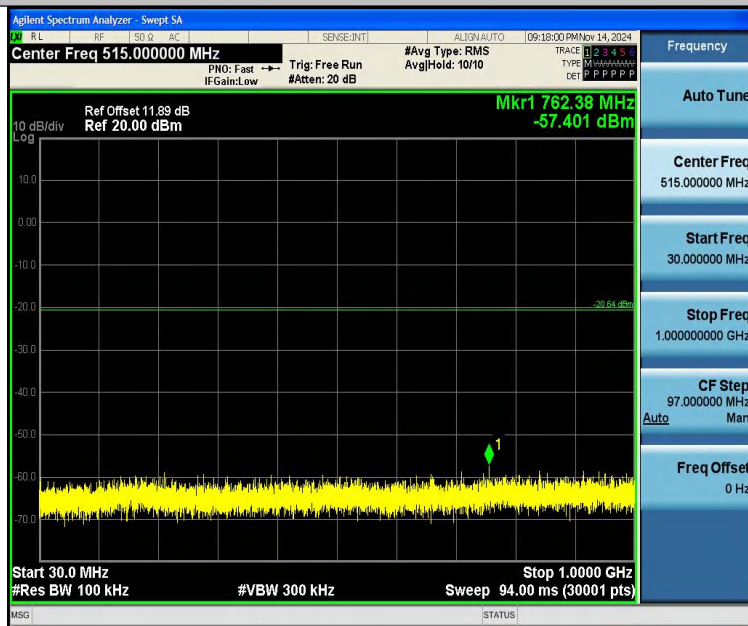
2DH5-Ant1-2480-30~1000-PASS



2DH5-Ant1-2480-1000~26500-PASS



3DH5-Ant1-2402-0~Reference-PASS



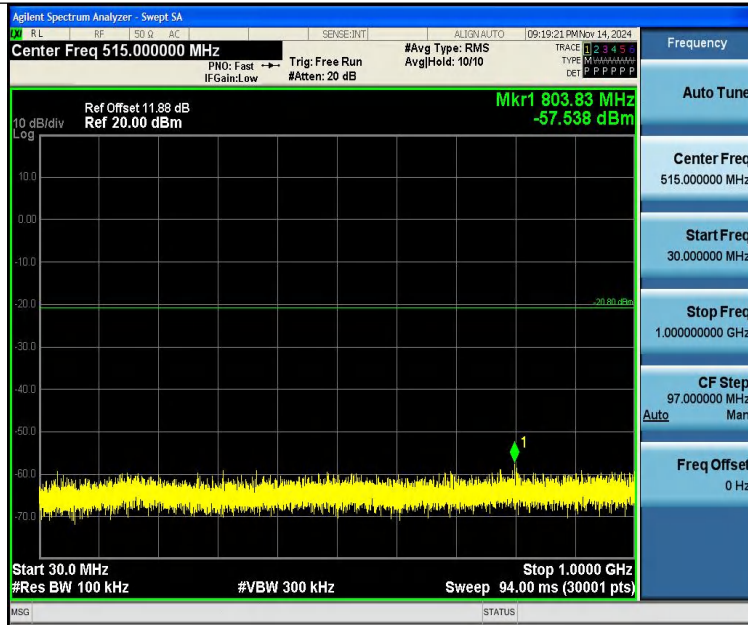
3DH5-Ant1-2402-30~1000-PASS



3DH5-Ant1-2402-1000~26500-PASS



3DH5-Ant1-2441-0~Reference-PASS



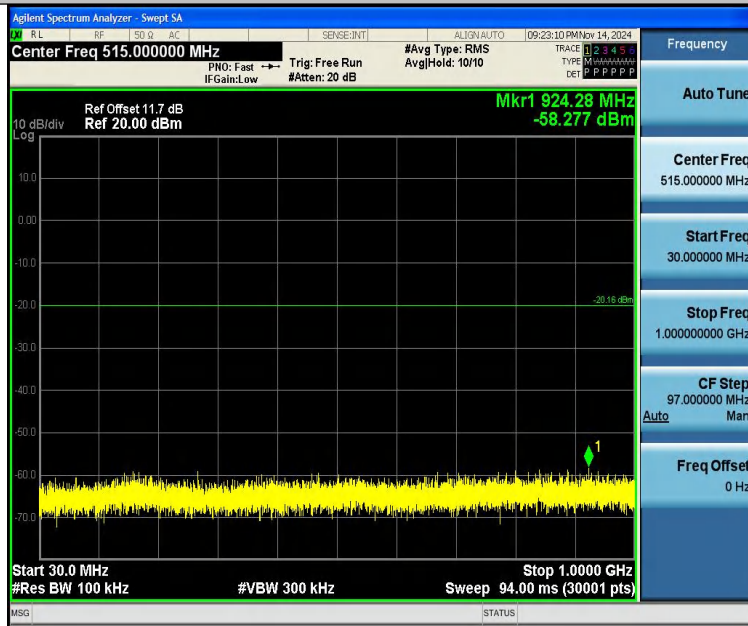
3DH5-Ant1-2441-30~1000-PASS



3DH5-Ant1-2441-1000~26500-PASS



3DH5-Ant1-2480-0~Reference-PASS



3DH5-Ant1-2480-30~1000-PASS



3DH5-Ant1-2480-1000~26500-PASS



14 Antenna Requirement

14.1 Test Standard and Requirement

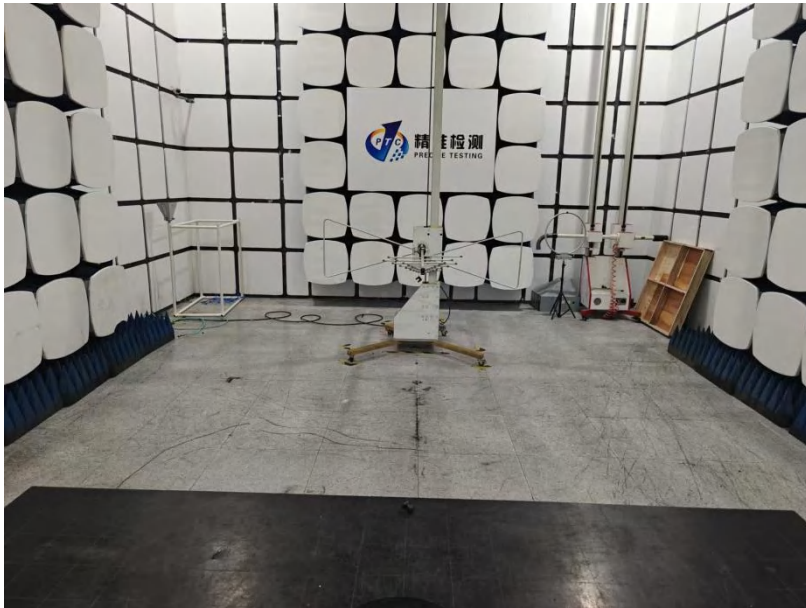
Test Standard	FCC Part15 Section 15.203 /247(c)
Requirement	<p>1) 15.203 requirement:</p> <p>An intentional radiator shall be designed to ensure that no antenna other than that furnished by the responsible party shall be used with the device. The use of a permanently attached antenna or of an antenna that uses a unique coupling to the intentional radiator, the manufacturer may design the unit so that a broken antenna can be replaced by the user, but the use of a standard antenna jack or electrical connector is prohibited.</p> <p>2) 15.247(c) (1)(i) requirement:</p> <p>Systems operating in the 2400-2483.5 MHz band that is used exclusively for fixed. Point-to-point operations may employ transmitting antennas with directional gain greater than 6dBi provided the maximum conducted output power of the intentional radiator is reduced by 1 dB for every 3 dB that the directional gain of the antenna exceeds 6 dBi.</p>

14.2 Antenna Connected Construction

The antenna is Ceramic Antenna which permanently attached, and the best case gain of the antenna is 1.98 dBi. It complies with the standard requirement.

15 APPENDIX I -- TEST SETUP PHOTOGRAPH

Radiated Emissions
From 30M-1GHz



Above 1GHz



16 APPENDIX II -- EUT PHOTOGRAPH



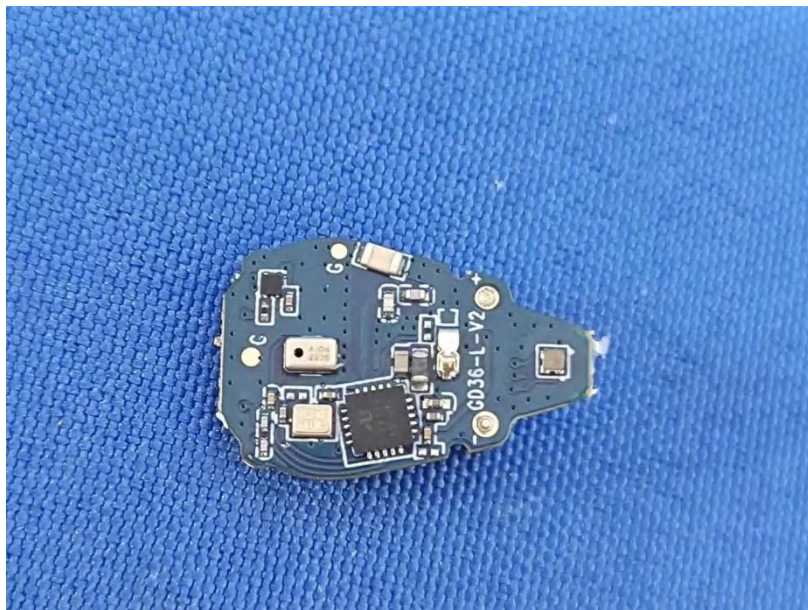


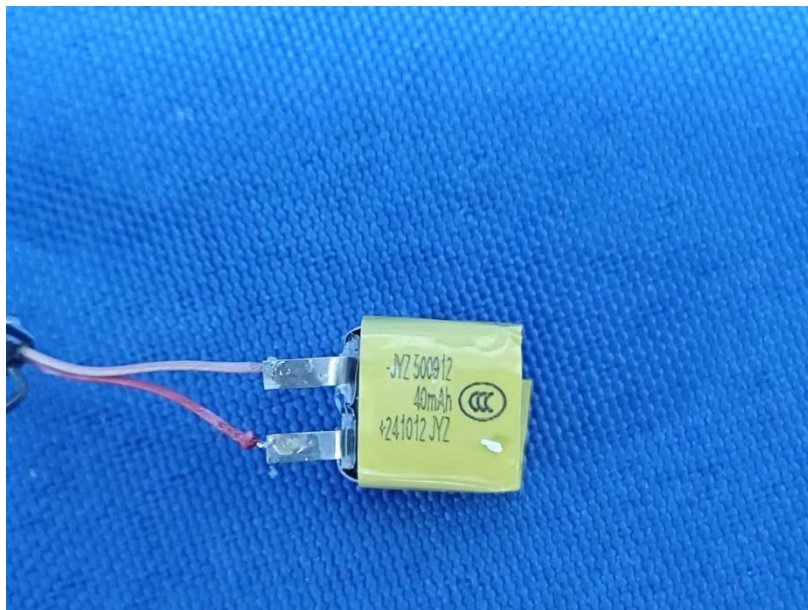
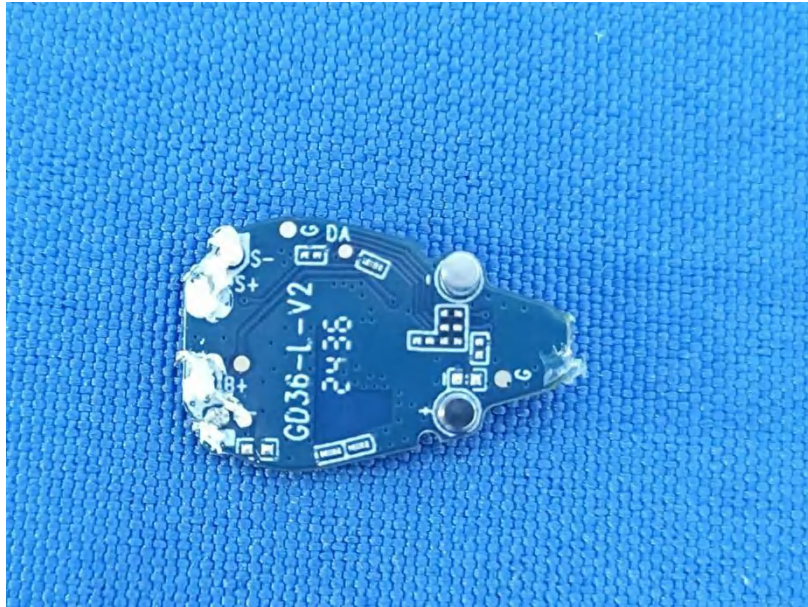
L:

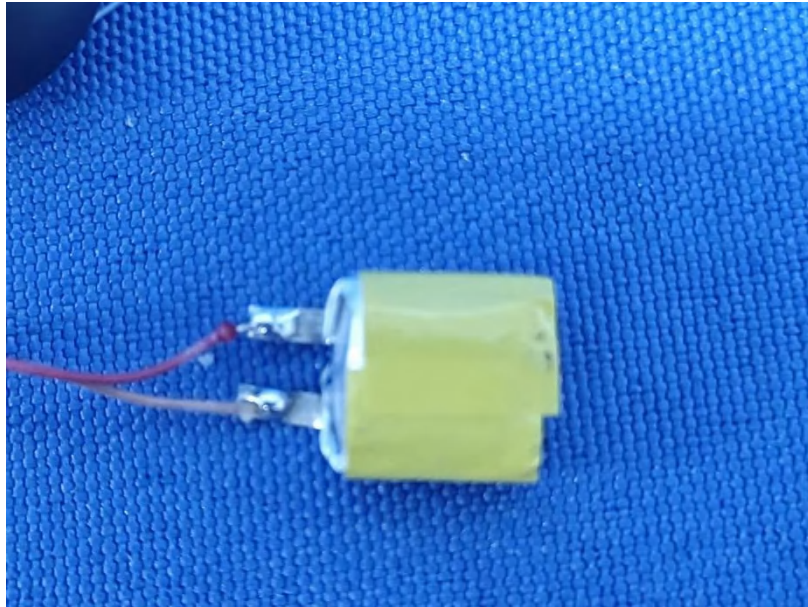












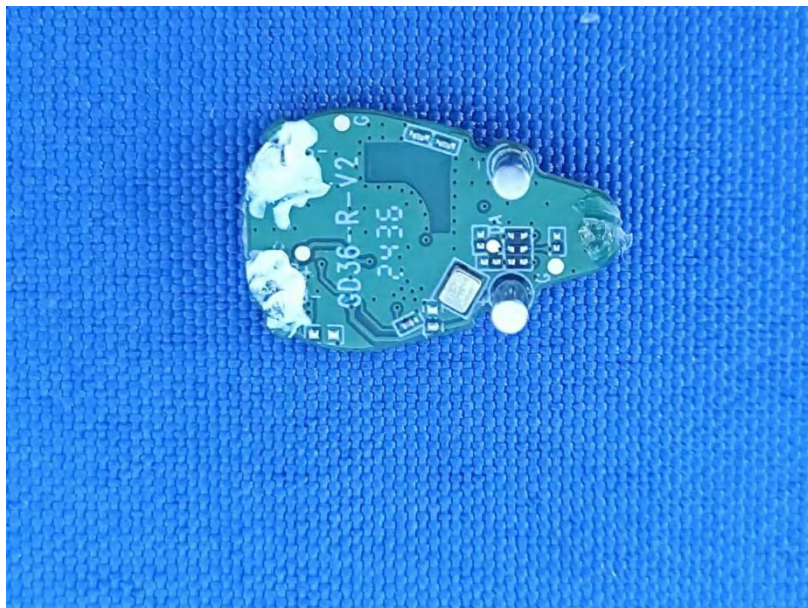
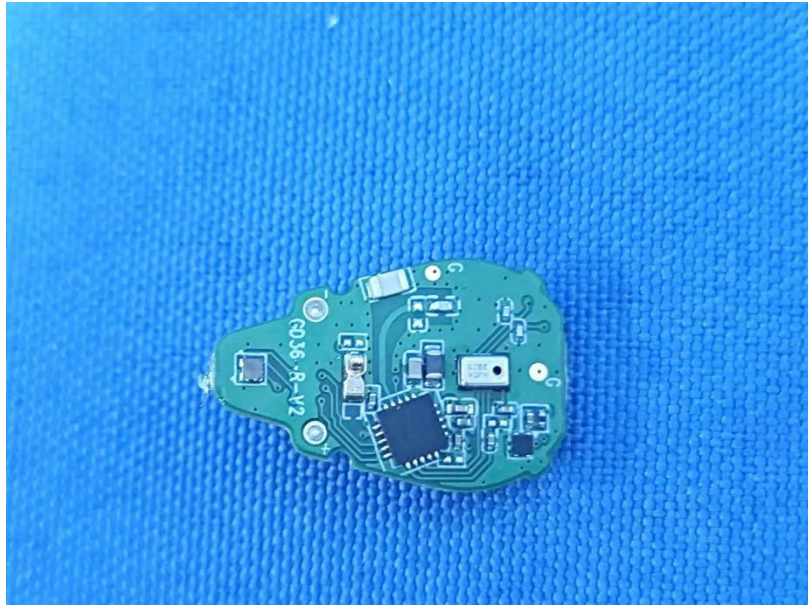
R:

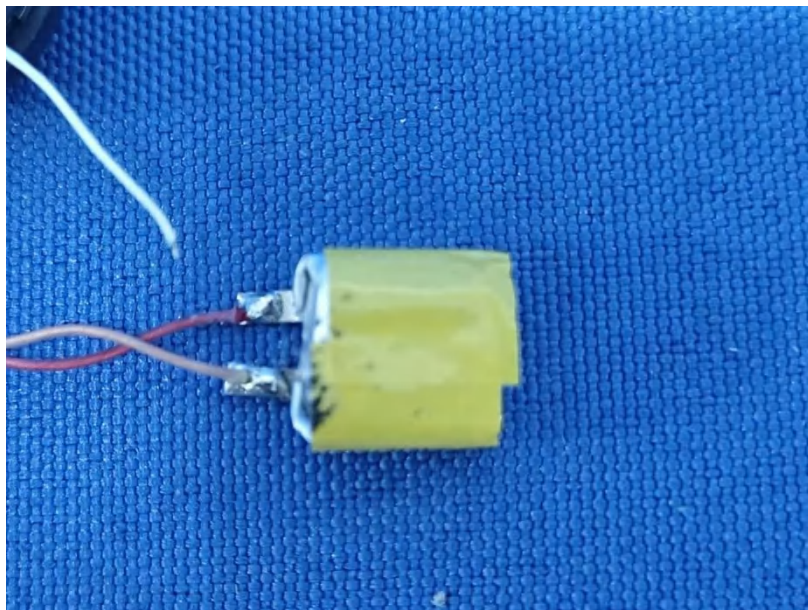
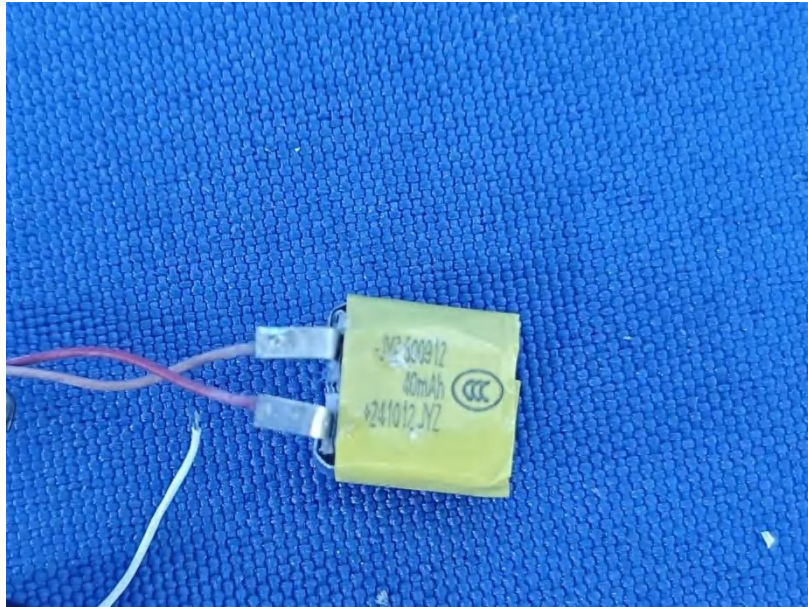












*******THE END REPORT*******