

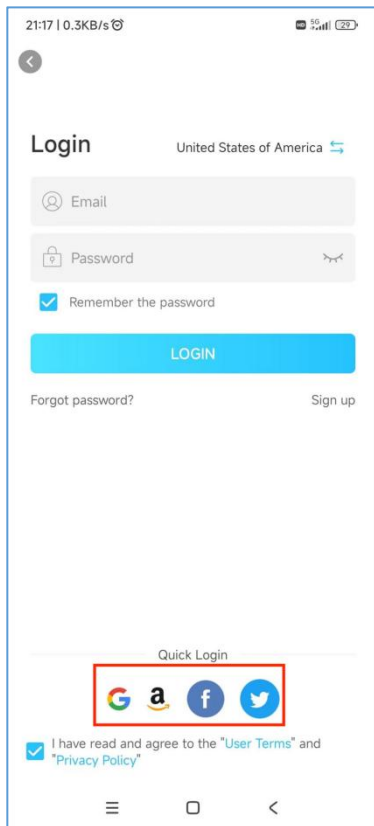
## Download APP

**Method 1:** You can scan the QR code and download the “Hopeway” .



## Register and Login

Support email and third-party registration and login.

A screenshot of the Hopeway app's login interface. At the top, the status bar shows the time 21:17, network speed 0.3KB/s, and battery level 29%. The page has a back arrow in the top left. The main heading is "Login" with a location selector "United States of America" and a double arrow icon. Below this are two input fields: "Email" with an eye icon and "Password" with a lock icon and a toggle for visibility. A checkbox labeled "Remember the password" is checked. A large blue "LOGIN" button is centered. Below the button are links for "Forgot password?" and "Sign up". At the bottom, there is a "Quick Login" section with icons for Google, Amazon, Facebook, and Twitter, which are highlighted by a red rectangle. Below the icons is a checkbox for "I have read and agree to the 'User Terms' and 'Privacy Policy'". The bottom of the screen shows a navigation bar with three icons: a hamburger menu, a square, and a back arrow.

### Method 2:

#### Android:

Search “Hopeway” and download from Google Play.

#### iPhone:

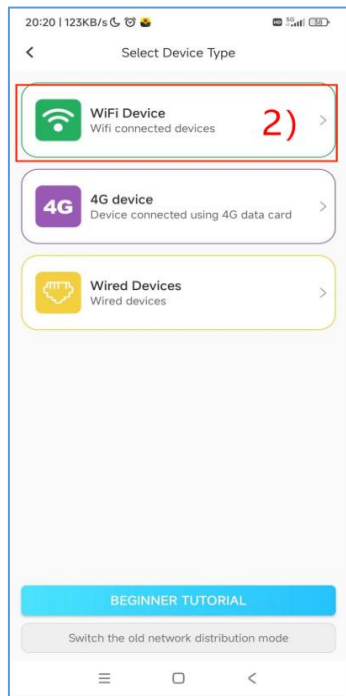
Search “Hopeway” and download from App Store.

# Add WiFi camera

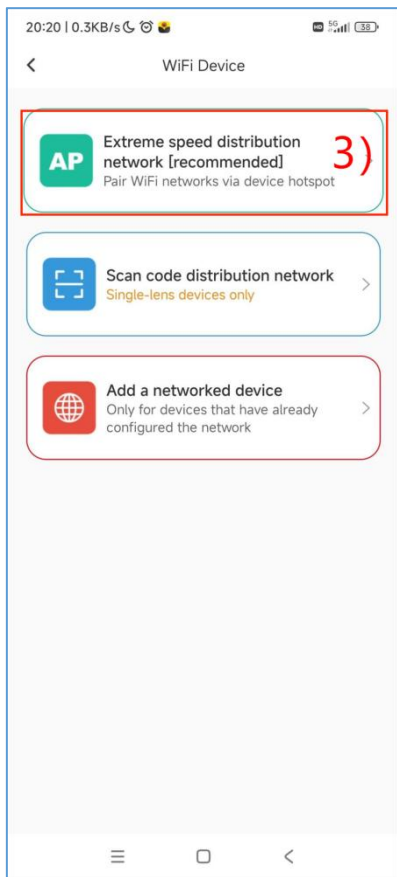
- (1) Power on the camera, and wait for the camera indicator light flashes.
- (2) Run the app Hopeway and follow the steps shown in Picture 1 - Picture 4 to configure the network.
- (3) After the camera is successfully connected to the Internet, the camera will be automatically bound to your account. After setting the name, you can complete the operation of adding the camera.
- (4) Click the play button in the device list to watch the video.



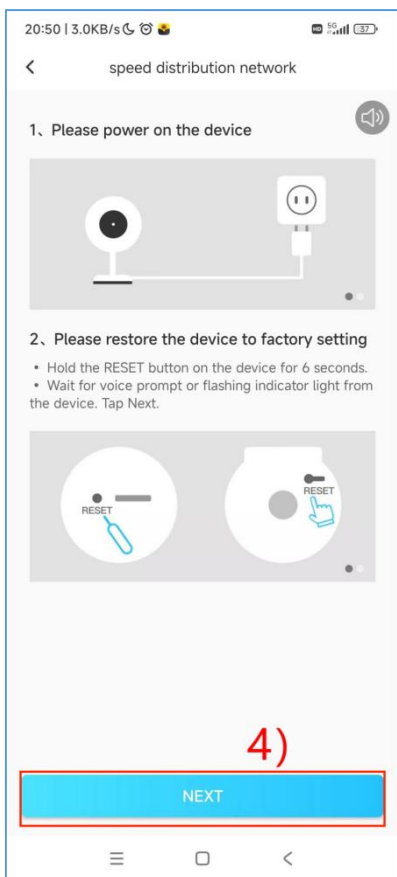
Picture 1



Picture 2



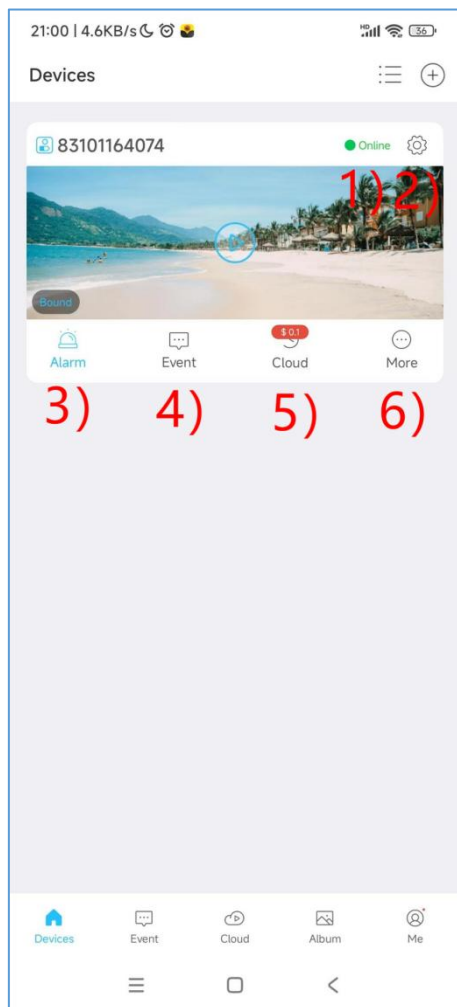
Picture 3



Picture 4

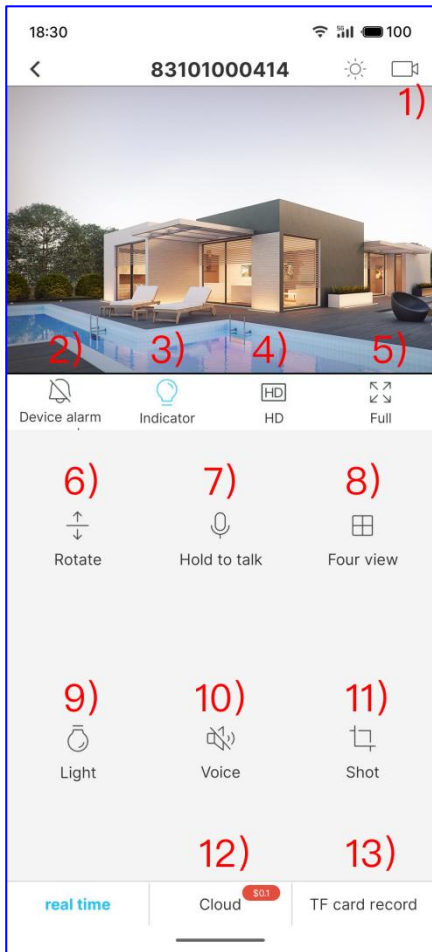
# Function introduction

## Introduction to the device list function



- 1) Online status
- 2) Device settings
- 3) Quick alarm
- 4) View the alarm message
- 5) Cloud service
- 6) More: Click on the More button to share camera with others.

# Introduction to the player interface



- 1) Record the real-time video and save it to the phone.
- 2) Turn the camera alarm sound on or off.
- 3) Turn the camera indicator on or off.
- 4) Switch video resolution.
- 5) Full screen.
- 6) Set the camera to flip vertically.
- 7) Press and hold the button for intercom.
- 8) 4-screen, single-screen switching.
- 9) Set the night vision light on mode.
- 10) Hear the sound of the camera.
- 11) Take screenshot photos.
- 12) Watch cloud recordings.
- 13) View SD card recordings.

# Cloud services

## What is cloud storage?

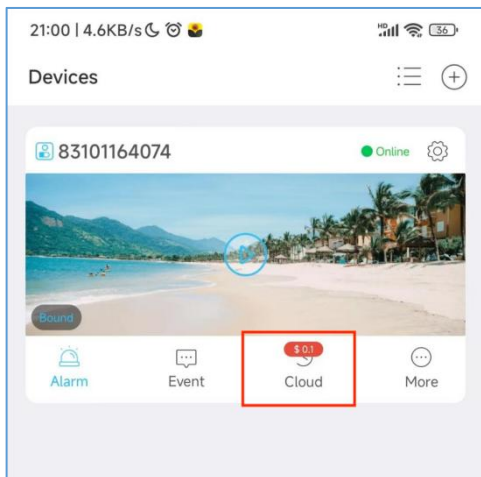
Cloud storage is a safe and reliable cloud video storage service for smart camera users.

## Why buy cloud storage

(1) Stable and reliable: Cloud recording will not lose data due to damage to the memory card, and there is no need to worry about the leakage of private data due to the memory card being stolen.

(2) Data security: Cloud video will not be lost due to the camera being stolen or damaged. When the camera is stolen or damaged, the previous video will remain in the cloud within the validity period of the cloud video. The owner can view and download it anytime, anywhere. For "video evidence that cannot be stolen".

## Cloud storage portal



## FCC Caution:

This device complies with part 15 of the FCC Rules. Operation is subject to the following two conditions: (1) This device may not cause harmful interference, and (2) this device must accept any interference received, including interference that may cause undesired operation.

Any changes or modifications not expressly approved by the party responsible for compliance could void the user's authority to operate the equipment.

NOTE: This equipment has been tested and found to comply with the limits for a Class B digital device, pursuant to Part 15 of the FCC Rules. These limits are designed to provide reasonable protection against harmful interference in a residential installation. This equipment generates, uses and can radiate radio frequency energy and, if not installed and used in accordance with the instructions, may cause harmful interference to radio communications. However, there is no guarantee that interference will not occur in a particular installation.

If this equipment does cause harmful interference to radio or television reception,

which can be determined by turning the equipment off and on, the user is encouraged to try to correct the interference by one or more of the following measures:

- Reorient or relocate the receiving antenna.
- Increase the separation between the equipment and receiver.
- Connect the equipment into an outlet on a circuit different from that to which the receiver is connected.
- Consult the dealer or an experienced radio/TV technician for help.

The device has been evaluated to meet general RF exposure requirement. The device can be used in portable exposure condition without restriction.