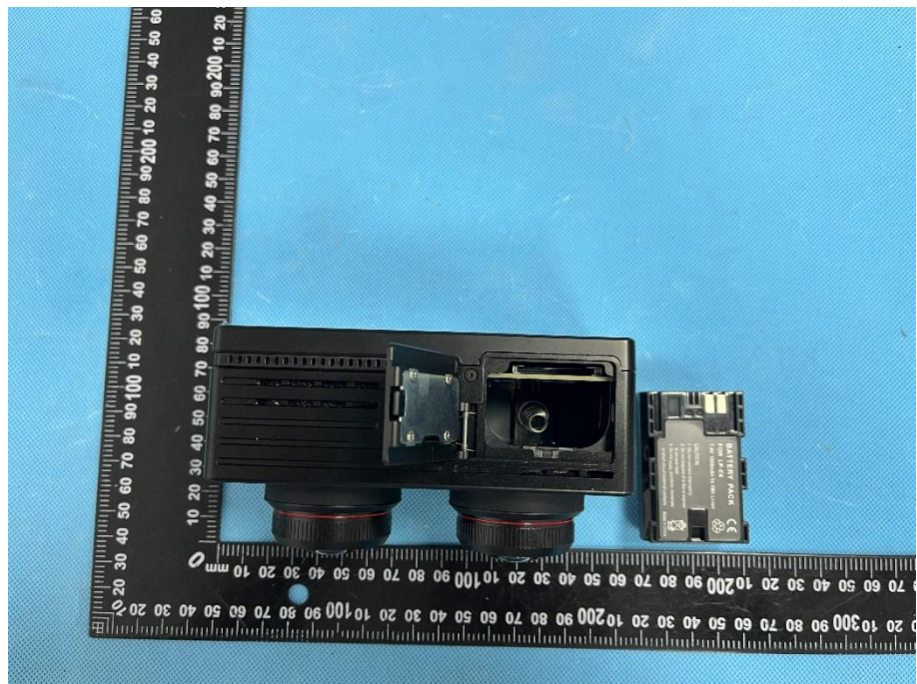


### EXHIBIT 3 - EUT INTERNAL PHOTOGRAPHS

**EUT Housing and Board View 1**



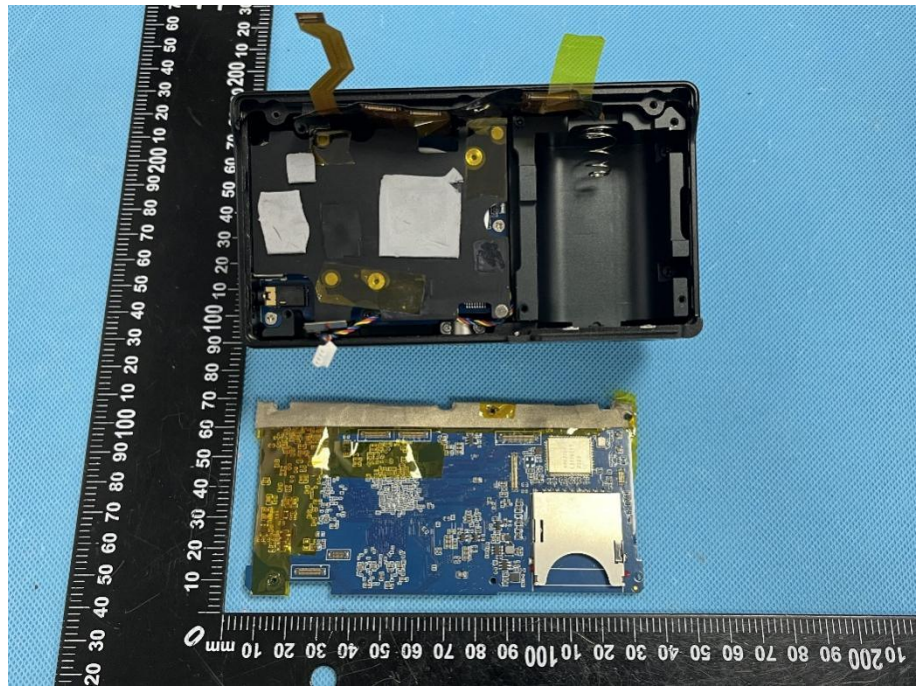
**EUT Housing and Board View 2**



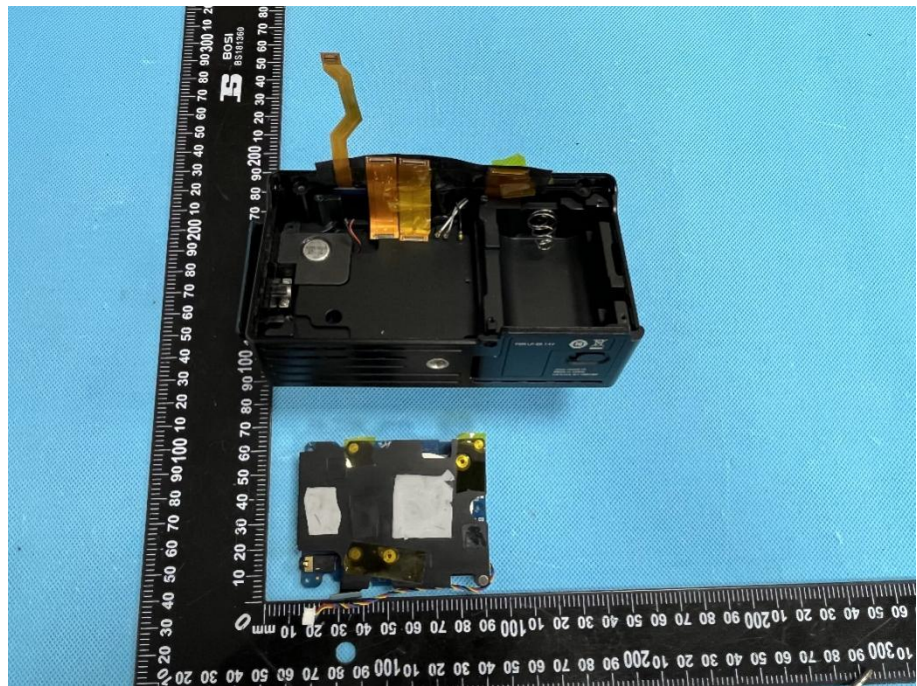
**EUT Housing and Board View 3**



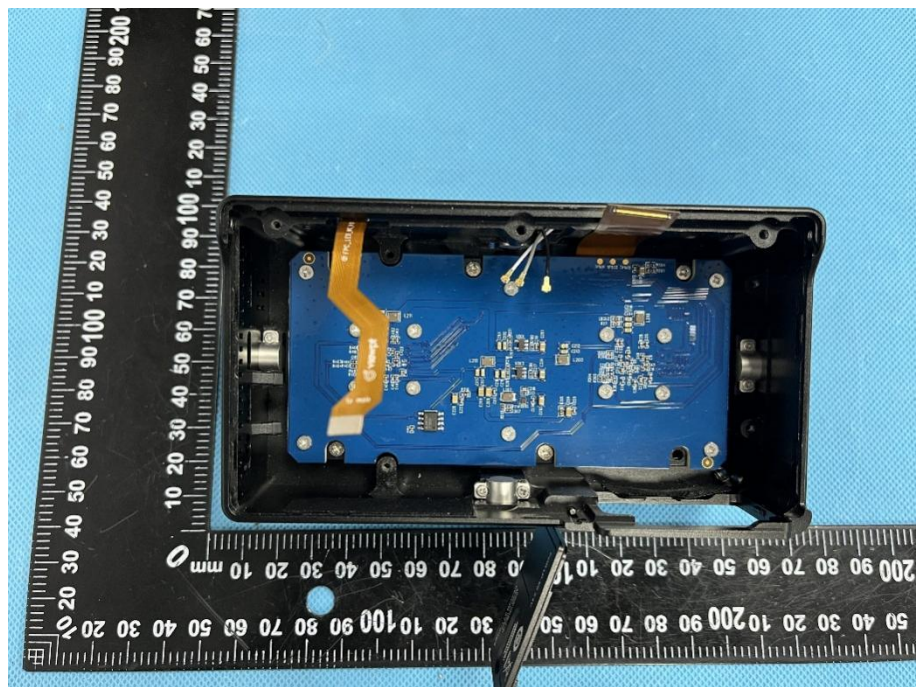
**EUT Housing and Board View 4**



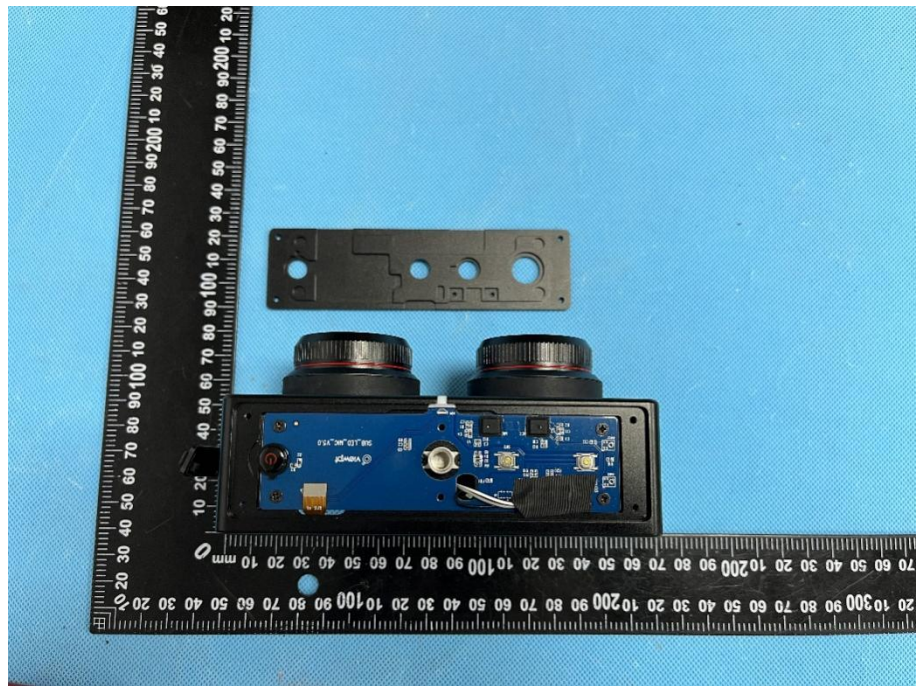
**EUT Housing and  
Board View 5**



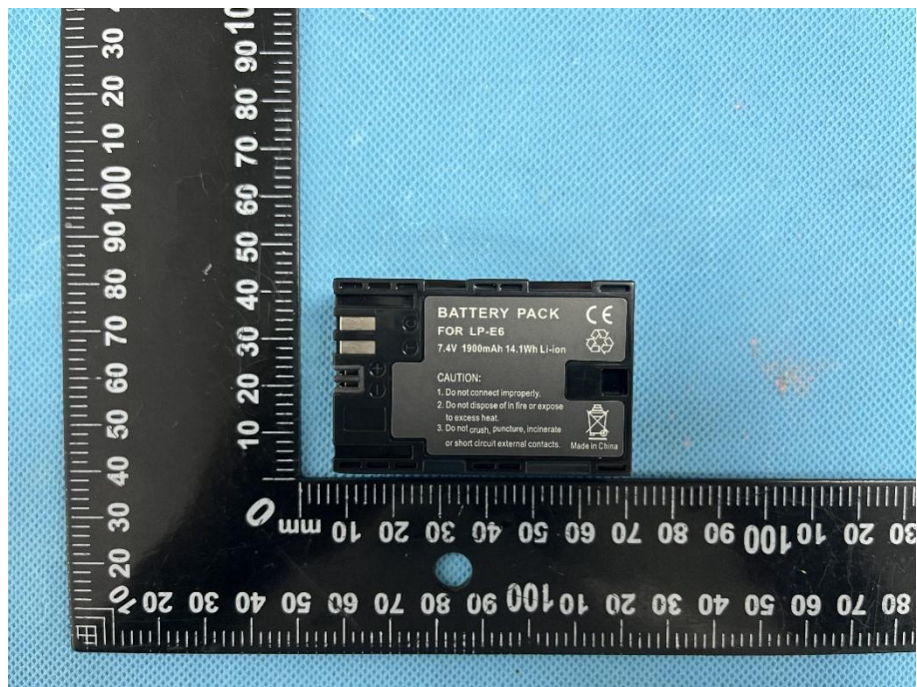
**EUT Housing and  
Board View 6**

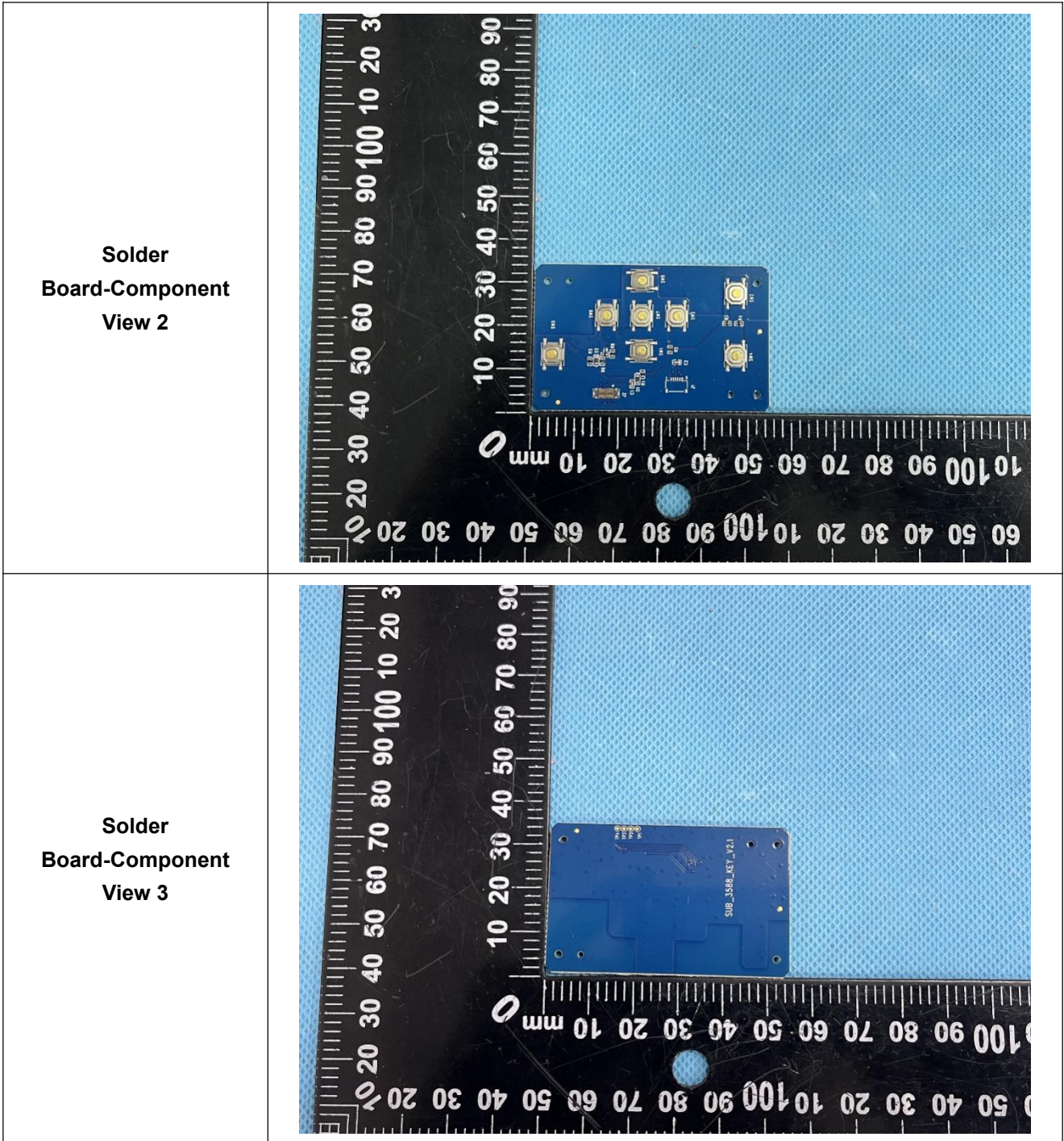


**EUT Housing and  
Board View 7**

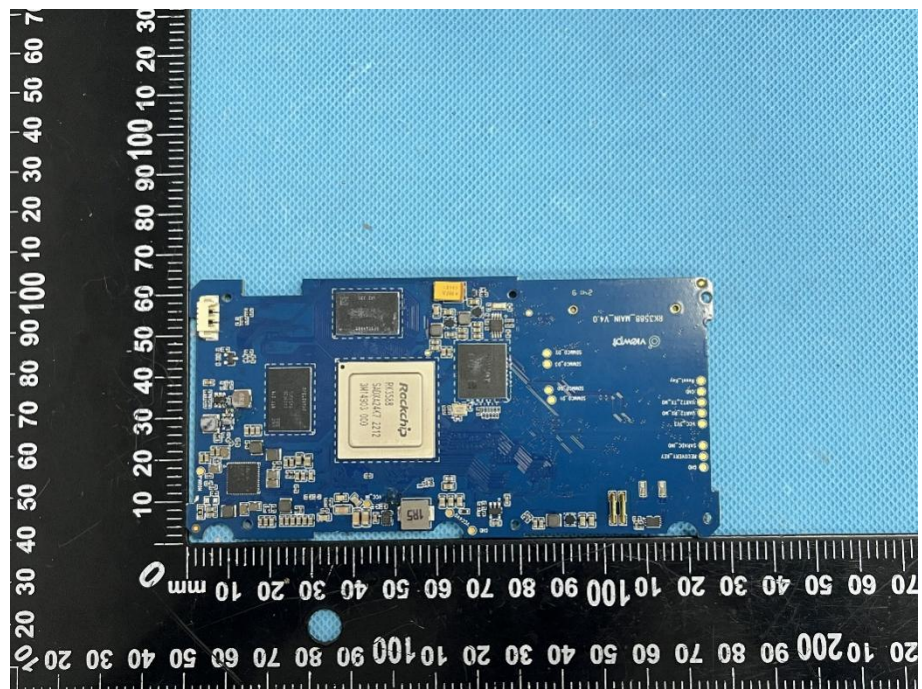


**Solder  
Board-Component  
View 1**

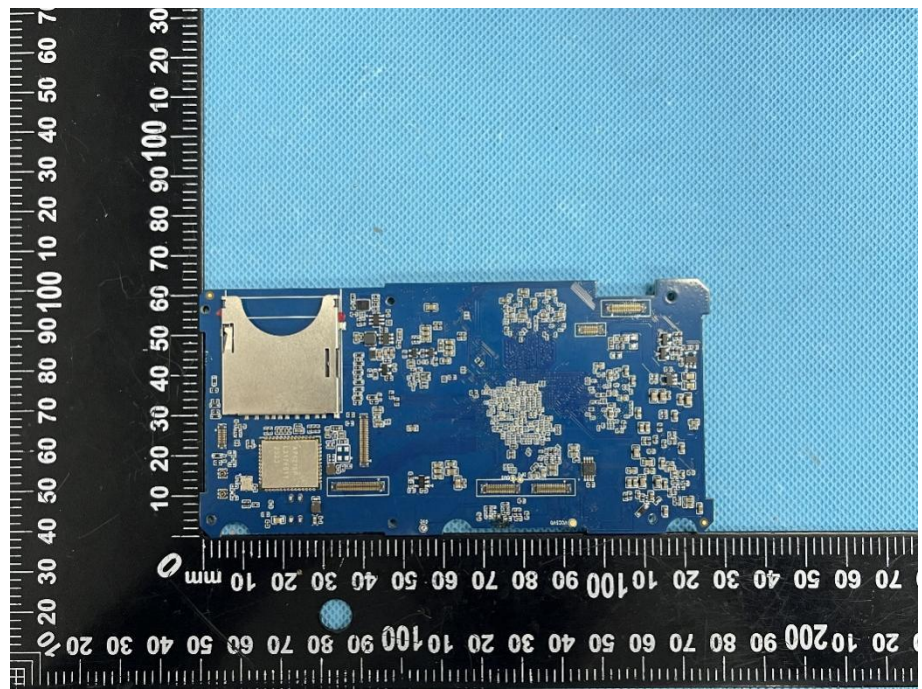




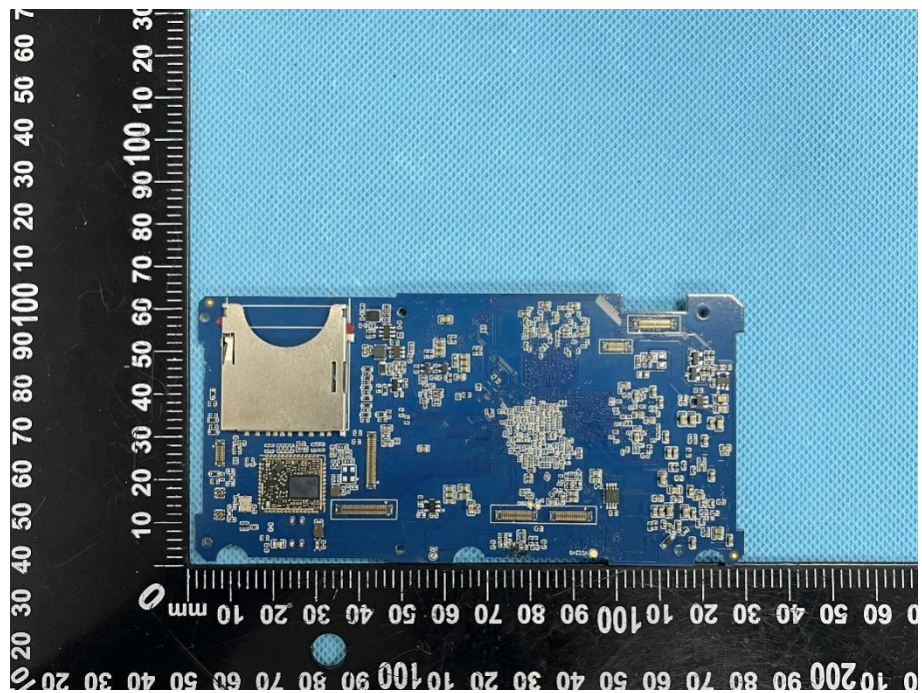
**Solder  
Board-Component  
View 4**



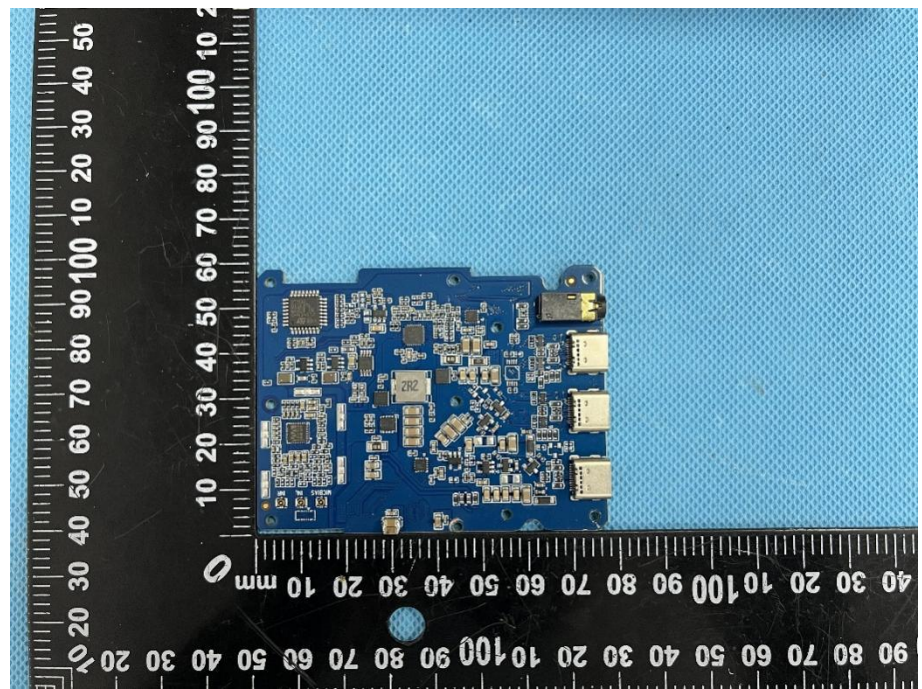
**Solder  
Board-Component  
View 5**



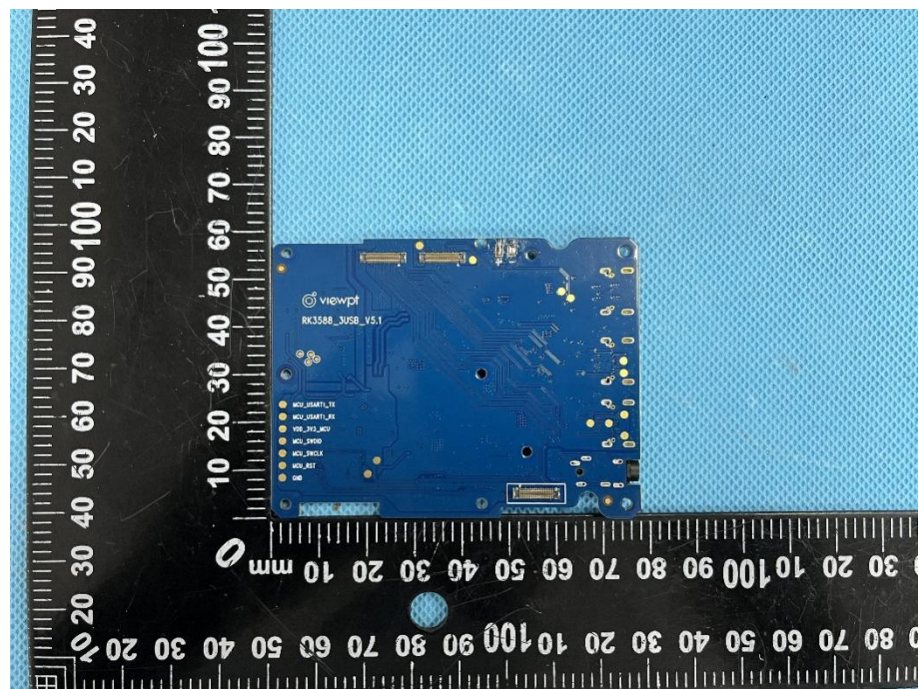
**Solder  
Board-Component  
View 6**



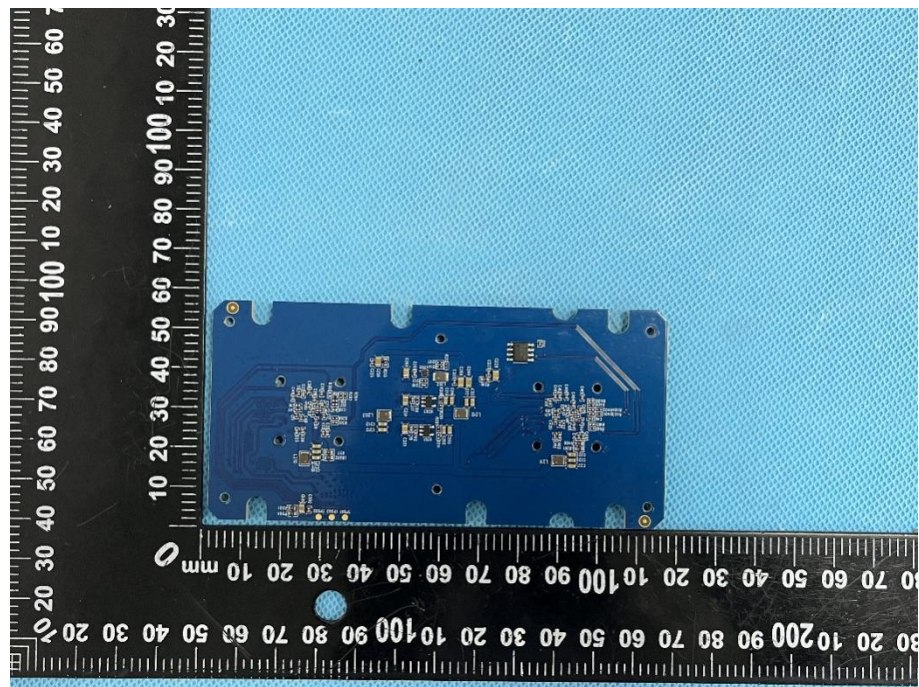
**Solder  
Board-Component  
View 7**



**Solder  
Board-Component  
View 8**

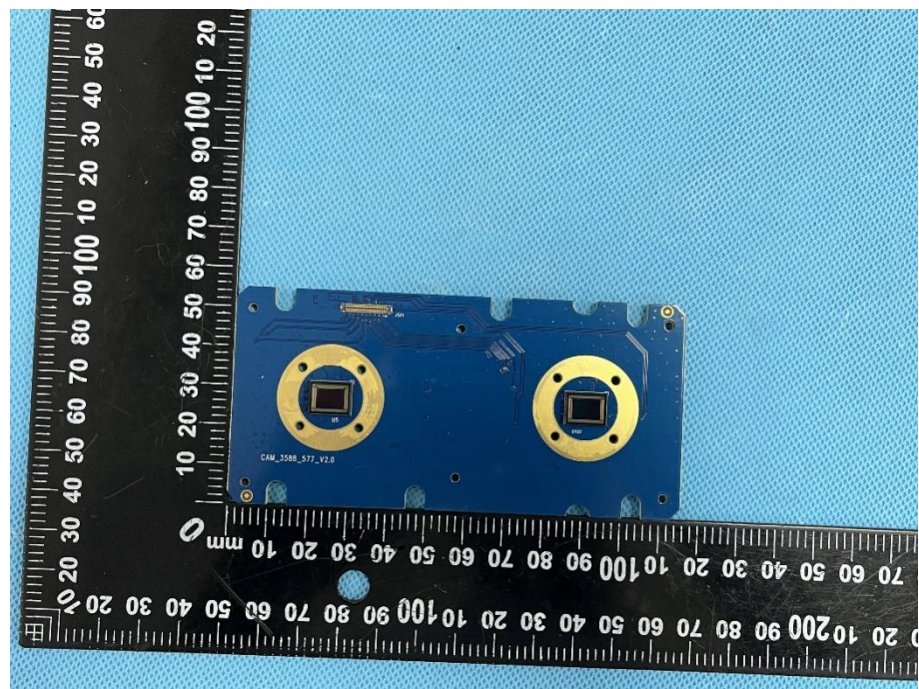


**Solder  
Board-Component  
View 9**

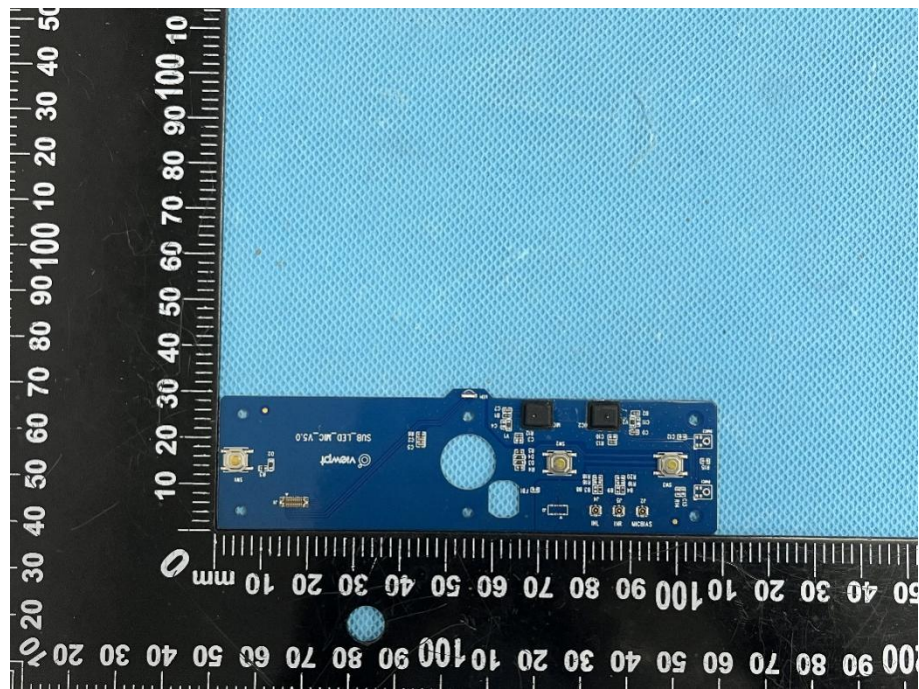


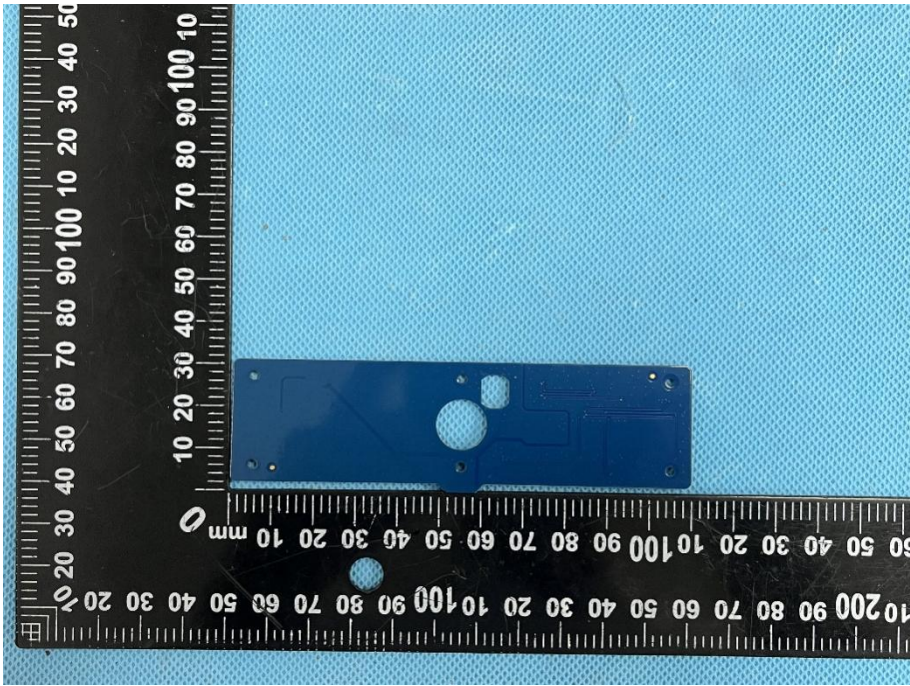
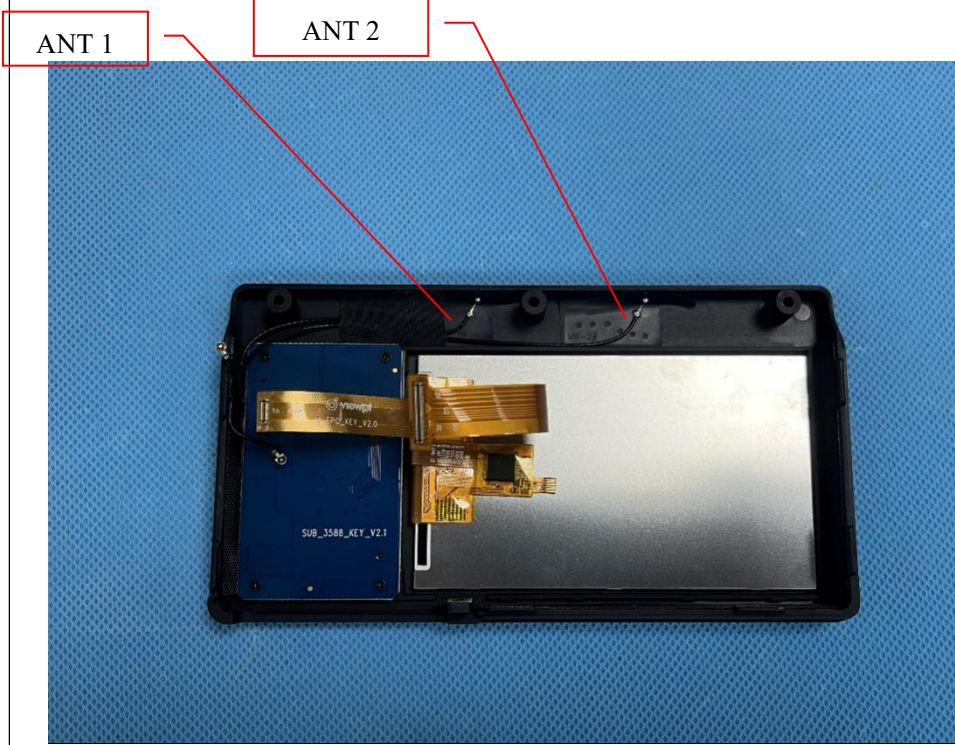


**Solder  
Board-Component  
View 10**



**Solder  
Board-Component  
View 11**



<p><b>Solder Board-Component View 12</b></p>	 A photograph of a blue solder board component. The component is rectangular with several circular holes and traces. It is placed on a blue textured surface. A black ruler with white markings is positioned vertically on the left and horizontally at the bottom of the component. The ruler shows measurements in millimeters and centimeters.
<p><b>Antenna View</b></p>	 A photograph of the back of a black device, showing the internal antenna components. Two red boxes labeled "ANT 1" and "ANT 2" are positioned above the device, with red lines pointing to specific antenna locations on the top edge. The device is placed on a blue textured surface. A blue PCB is visible on the left side of the device, with a gold flex cable connecting it to the main board. The PCB has the text "SUB_3588_KEY_V2.1" printed on it. A gold flex cable is also visible, with the text "YONGSI" and "FP2_KEY_V2.0" printed on it.