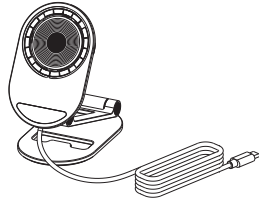


USB-C Desktop Magnetic Wireless Charger

MT-CW101

Quick Start Guide



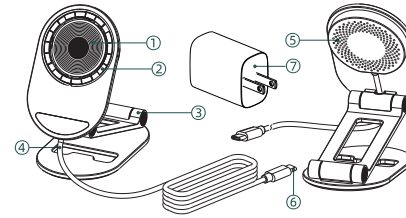
INTRODUCTION

This desktop magnetic wireless charger offers instant charging capabilities, featuring magnetic adsorption that allows for precise phone alignment and immediate charging without the constraints of cables. Its multi-angle and height adjust-ability ensure comfortable usage, whether for work or entertainment, preventing shoulder strain. The foldable mount design enhances portability. Supporting the Qi charging protocol, QC2.0/3.0, and PD2.0/3.0, it ensures compatibility with a wide range of Apple and Android models.

IN THE BOX

- 1 x USB-C Desktop Magnetic Wireless Charger
- 1 x USB-C Power Adapter
- 1 x Quick Start Guide

OVERVIEW



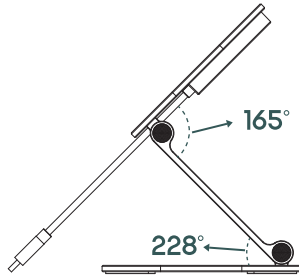
- ① Wireless Charging Coil: Power output
- ② Magnet: Magnetic adsorption, fixation and coil alignment
- ③ Phone Stand: Made of aluminum alloy for adjusting the pitch angle and height of the wireless charger
- ④ Integrated Cable: Integrated with the mount
- ⑤ Heat Vents
- ⑥ USB-C Connector: Connecting to power adapter
- ⑦ Power Adapter

FEATURES

- Special magnetic adsorption design for precise alignment
- Multiple protection ensure the safe charging
- Supporting Qi protocol, QC2.0/3.0 and PD2.0/3.0, compatible with various phone models
- Foldable design, easy to carry, no charging anxiety while going out
- Free adjustment from several angles and height, free your shoulder pain
- High-density heat dissipation design prevents overheating damage
- 2-6mm transmission distance, charging your phone easily even with a phone case

USING TIPS

- Step 1. Connect USB-C Connector to the Power Adapter.
- Step 2. Plug the Power Adapter into the power outlet.
- Step 3. Adjust the angle and height as you are comfortable.
- Step 4. Align the back of your phone with the Magnet Panel and Charging Coil, then put the phone on it.



SPECIFICATION

Material: Aluminium Alloy&Plastic&Silicone
 Output: 5W/7.5W/10W/15W(MAX)
 Input: 5V/3A, 9V/2A, 12V/1.5A(MAX)
 Input Protocol: QC2.0/3.0 and PD2.0/3.0
 Charging Protocol: WPC-Qi V1.2.4
 Transmission Distance: 2-6mm
 Phone Model: iPhone and Android(with a mag safe phone case)

ATTENTION

- It is forbidden to insert metal objects between the wireless charging coil and the mobile phone coil during charging, which will cause the metal to generate high temperature and cause a fire.

- If the wireless charger does not charge the mobile phone after connecting the power adapter, please unplug the USB-C Connector from the Power Adapter, then try to restart the wireless charger, or try restarting the phone.
- In order to better fix the mobile phone, we recommend you to remove the phone case, or use a thin phone case.
- The thickness of the phone case is recommended not to exceed 5mm.
- Please keep out of reach of children.
- Do not disassemble, open or repair the product by yourself without professional help, and dropping or hitting it strongly also is prohibited.

Official website: www.minthouz.com
 Technical support: support@minthouz.com

FCC Warning

This device complies with part 15 of the FCC Rules. Operation is subject to the following two conditions:

(1) This device may not cause harmful interference, and (2) this device must accept any interference received, including interference that may cause undesired operation.

Any Changes or modifications not expressly approved by the party responsible for compliance could void the user's authority to operate the equipment.

Note: This equipment has been tested and found to comply with the limits for a Class B digital device, pursuant to part 15 of the FCC Rules. These limits are designed to provide reasonable protection against harmful interference in a residential installation. This equipment generates uses and can radiate radiofrequency energy and, if not installed and used in accordance with the instructions, may cause harmful interference to radio communications. However, there is no guarantee that interference will not occur in a particular installation. If this equipment does cause harmful interference to radio or television reception, which can be determined by turning the equipment off and on, the user is encouraged to try to correct the interference by one or more of the following measures:

- Reorient or relocate the receiving antenna.
- Increase the separation between the equipment and receiver.
- Connect the equipment into an outlet on a circuit different from that to which the receiver is connected.
- Consult the dealer or an experienced radio/TV technician for help.

The FCC certification of this device refers to RF exposure testing performed in typical operating conditions, where a person is no closer than 20 centimeters from the device surface at all times, except for non-repetitive patterns with transient time intervals in the order of a second. Only in the stated conditions, the device is shown to fully comply with the FCC RF Exposure requirements of KDB 447498.