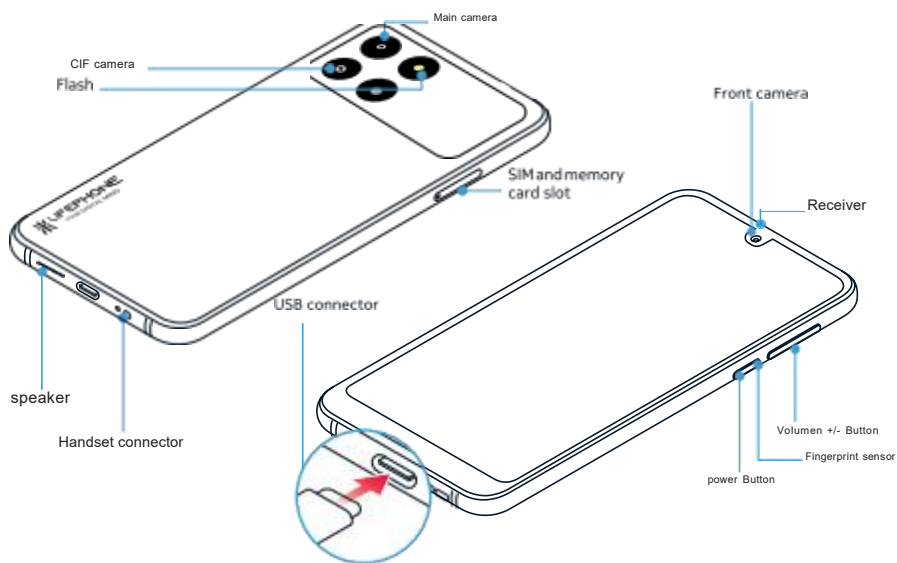


Get Starte



HERO



EN

1. Insert the SIM and memory card

1. Open the SIM and memory card tray: push the tray opener pin in the tray hole and slide the tray out.

2. If you have a dual SIM phone, place a nano-SIM card in slot 1 and a second SIM card in slot 2, memory card in slot 3 with the contact areas facing down.

3. Slide the tray back in the slot.

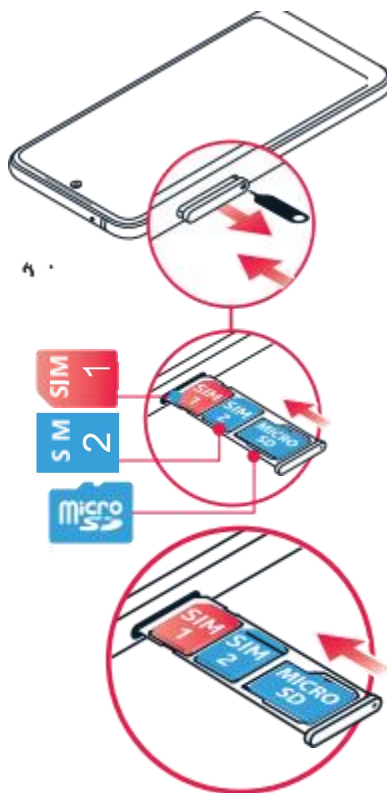
Use only original nano-SIM cards. Use of incompatible SIM cards may damage the card or the device, and may corrupt data stored on the card.

Use only compatible memory cards approved for use with this device. Incompatible cards may damage the card and the device and corrupt data stored on the card.

Important:

Do not remove the memory car when an app is using it. This might damage the memory card, the device, and corrupt data on the card.

Both SIM cards are available at the same time when the device is not being used, but while one SIM card is active, for example, making a call, the other may be unavailable.

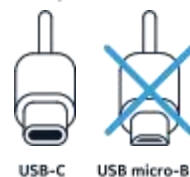


2. Charge the battery and switch the phone on

Plug a compatible charger into a wall outlet, and connect the cable to your phone. Your phone supports the USB-C cable. You can also charge your phone from a computer with a USB cable, but it may take a longer time.

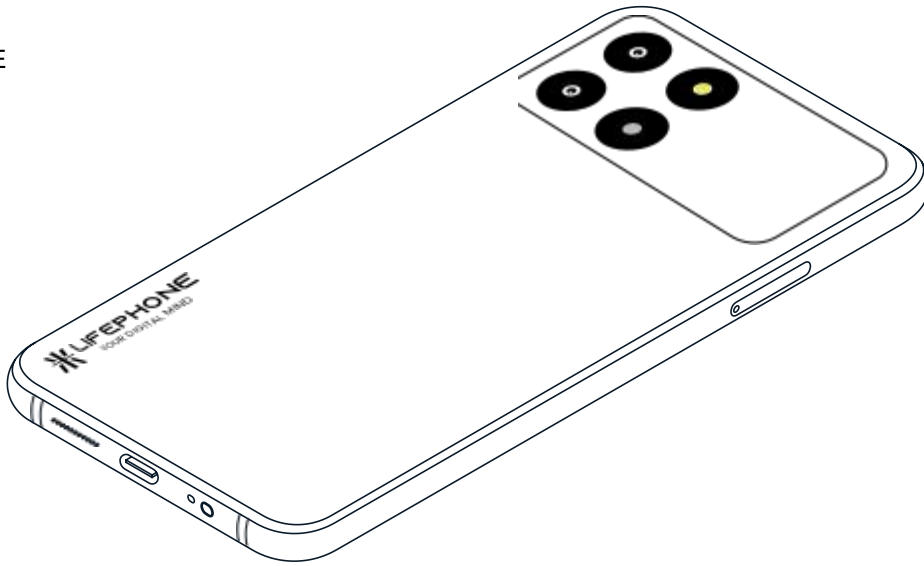
If the battery is completely discharged, it may take several minutes before the charging indicator is displayed.

To switch your phone on, press and hold the power key until the phone vibrates. The phone guides you through the setup.



For an online user guide and troubleshooting help, go to <https://lifephone.cn/support>.

Get Starte



3- FCC Precautions

Regulatory Compliance

This device complies with part 15 of the FCC rules. Its operation is subject to the following conditions:

1. This device may not cause harmful interference.
2. This device must accept any interference received, including interference that may cause undesired operation.

4- Modifications

Any changes or modifications not expressly approved by the party responsible for compliance could void the user's authority to operate the equipment.

5- user Information

This equipment has been tested and found to comply with the limits for a Class B digital device, pursuant to part 15 of the FCC: ID: 2BH83-HERO Rules. These limits are designed to provide reasonable protection against harmful interference in a residential installation.

6- Corrective Measures

If this equipment does cause harmful interference to radio or television reception, the user is encouraged to try to correct the interference by one or more of the following measures:

- Reorient or relocate the receiving antenna.
- Increase the separation between the equipment and the receiver.
- Connect the equipment into an outlet on a circuit different from that to which the receiver is connected.
- Consult the dealer or an experienced radio/TV technician for technical assistance.

7- Specific Absorption Rate (SAR) Information

This cell phone meets government requirements for exposure to radio waves. The guidelines are based on standards developed by independent scientific organizations and are periodically evaluated.

8- SAR limit

The US (FCC) SAR limit is 1.6 W/kg averaged over one gram of tissue. The device type: (FCC Identification: has been tested against this limit. The highest SAR values reported during product certification are:

- Use in the ear: 1.342 W/kg
- Body-worn use: 0.763 W/kg

9- Body use

To comply with RF exposure requirements, a minimum distance of 1.0 cm must be maintained between the user's body and the phone, including the antenna. The accessories used must not contain metallic components. The use of non-compatible accessories may not meet RF exposure requirements and should be avoided.

Powered by Android™ (Go edition).

Android is a trademark of Google LLC.