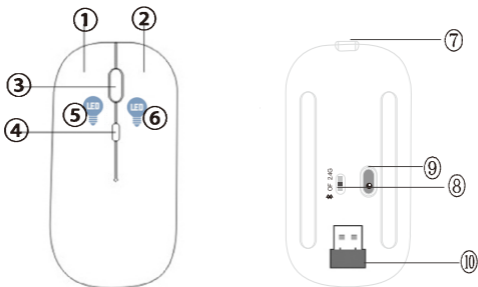


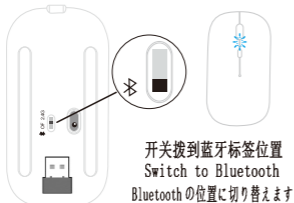
产品特点 & Features & 製品の特徴



| | | | |
|---|---------|-----------------------------|-------------------|
| ① | 左鍵 | Left click | 左ボタン |
| ② | 右鍵 | Right click | 右クリック |
| ③ | 滚轮 | Flip pages | ホイール |
| ④ | DPI | DPI | DPI |
| ⑤ | 充电指示灯 | Charging indicator led | 充電インジケータ |
| ⑥ | 蓝牙对码灯 | Bluetooth Code matching LED | BluetoothペアコードLED |
| ⑦ | 充电口 | Charging port | 充電ポート |
| ⑧ | 开关 | Power OFF/ON | 電源オフ/オン |
| ⑨ | 光电引擎 | Sensors | 光電エンジン |
| ⑩ | 2.4G接收器 | 2.4G Receiver | 2.4Gレシーバー |

Dual Mode:Bluetooth5.0+2.4G Connection

双模鼠标连接方式 デュアルモードマウス接続



对码指示灯闪烁, 进入对码

Automatic code match after powered

LEDが点滅し、コード一致状態になります

1 2
3 4

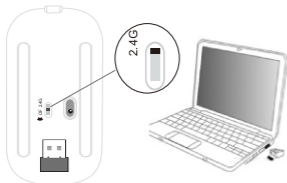
Bluetooth 模式



打开设备蓝牙进行连接

Open device Bluetooth to connect
デバイスのBluetoothを開いて接続する

2.4G 模式



接收器插入电脑usb,鼠标再通电
Plug into computer usb port,-
Mouse power on

受信機がパソコンに挿入され、マウスが電源を入れます

1. 充电输入电压5V, 电流 $\leq 1A$ 禁止快充
2. 强制对码: 拨打蓝牙档位后, 长按dpi键6秒。或者同时按左键+右键+滚轮。

1. Input voltage 5v, current $\leq 1A$
- 2-3 hours for charging
2. Forced code alignment by pressing DPI after power on

This device complies with Part 15 of the FCC Rules. Operation is subject to the following two conditions: (1) this device may not cause harmful interference, and (2) this device must accept any interference received, including interference that may cause undesired operation

NOTE: This equipment has been tested and found to comply with the limits for a Class B digital device, pursuant to Part 15 of the FCC Rules. These limits are designed to provide reasonable protection against harmful interference in a residential installation. This equipment generates, uses and can radiate radio frequency energy and, if not installed and used in accordance with the instructions, may cause harmful interference to radio communications. However, there is no guarantee that interference will not occur in a particular installation.

If this equipment does cause harmful interference to radio or television reception, which can be determined by turning the equipment off and on, the user is encouraged to try to correct the interference by one or more of the following measures:

- Reorient or relocate the receiving antenna.
- Increase the separation between the equipment and receiver.
- Connect the equipment into an outlet on a circuit different from that to which the receiver is connected.
- Consult the dealer or an experienced radio/TV technician for help.

Warning: changes or modifications not expressly approved by the party responsible for compliance could void the user's authority to operate the equipment

The device has been evaluated to meet general RF exposure requirements, the device can be used in portable exposure condition without restriction