



Acumen IBC Ltd
Ground Floor, 94 Ock Street,
Abingdon, OX14 5DH

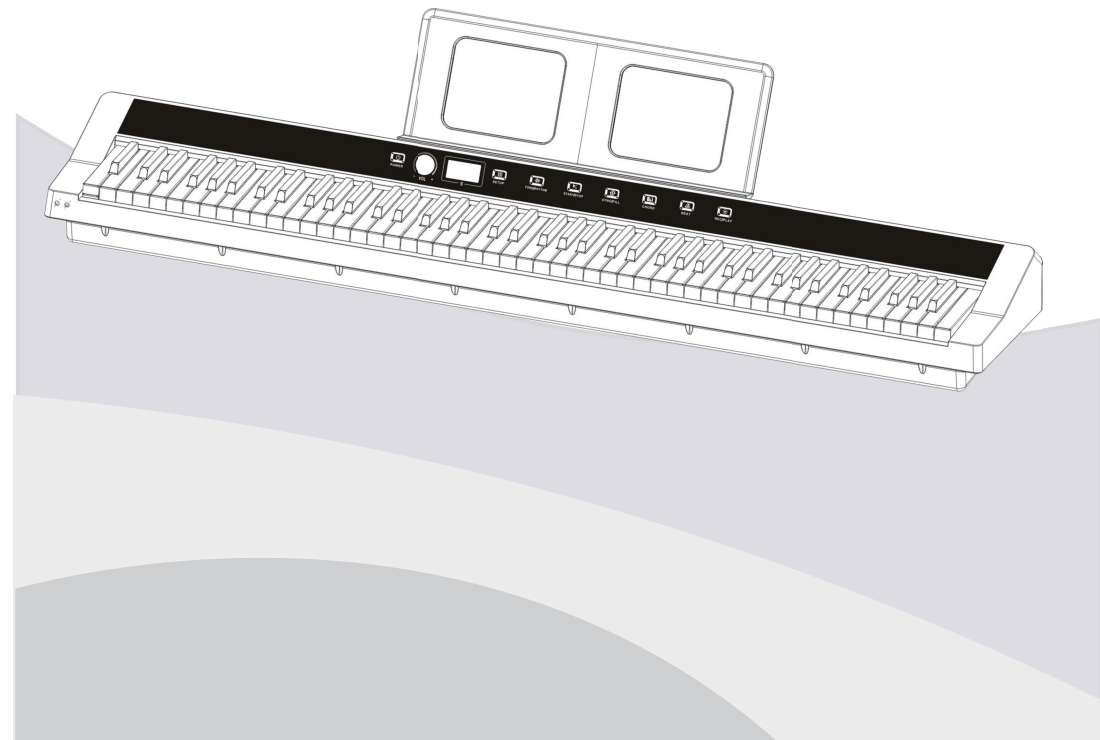


Digital Piano

Manual

Model: SR-GH80

SHEIRIN



Model: SR-GH80

Welcome to use

Thank you for purchasing our digital piano! This digital piano is equipped with the latest electronic technology, it's an elegant and exquisite musical instrument.

◆Please read this manual carefully before using it.

Product Description	01
Parameters	02
Safety Precautions	03
Jacks Panel.....	04
Connection Socket	05
Function Instruction Diagram	07
Operation Instruction	09
Maintenance	14
Warranty	15

Product Description

French Dream Sound Source

Our digital piano is equipped with the top French Dream Sound Source, which can present you every subtle detail of a grand acoustic piano sound.

Rich 128Tones

128 standard GM tone included.

100 Preset Rhythms

From rock to pop and jazz, experience 100 rhythms with a variety of accompaniments.

80 Demo Songs

80 carefully selected demos with different styles.

USB/MIDI Port

A USB or MiDi port lets you connect to a computer or other MIDI device for quick and easy operation and creation.

Dual Bluetooth Mode

You can use your mobile phone or other device to play the music APP, connect it to bluetooth and connect the electronic piano, play music on the piano and enjoy the songs.

Parameters

- 88 keyboard
- 128 tones
- 100 rhythms
- 80 demos
- LED display
- Volume adjustment
- Speed Control/Transpose Control
- Chord function
- Accompaniment sync
- Dual keyboard
- Touch/play function
- USB/MIDI function
- Headphone jack/Speaker audio input

Safety Precautions

warning

Smoke, Odor, Overheating

Continued use may result in fire or electric shock if the instrument emits smoke, odors, or overheats. In the above case, please do the following immediately.

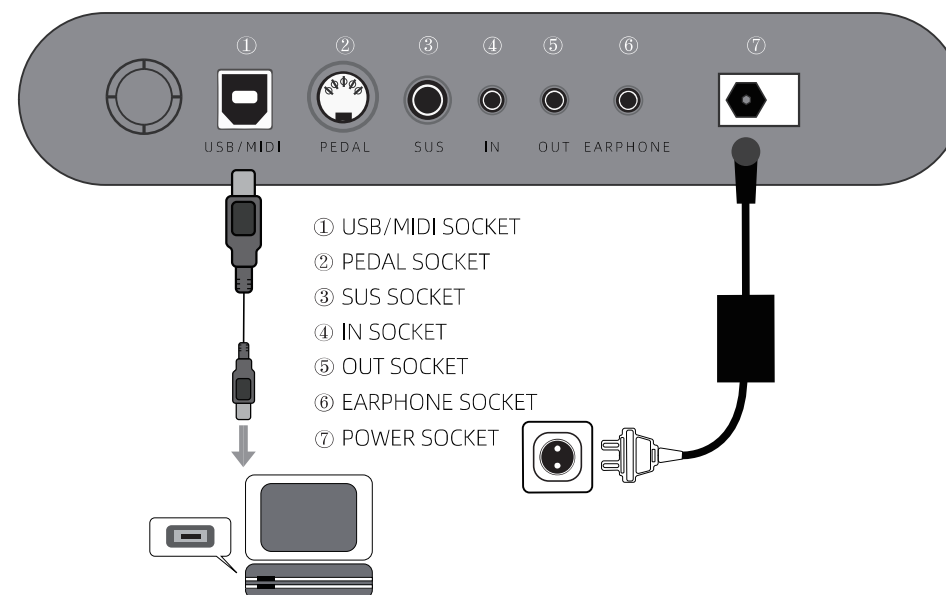
1. Turn off the power.
2. Unplug the AC adaptor from the plug.
3. Please contact your dealer.

AC Adapter

Misuse of the AC adaptor may result in fire or electric shock. Please observe the following precautions.

1. Please use the AC adapter specially designed for this product.
2. Use an AC power source whose output voltage is within the rated voltage range marked on the AC adapter.
3. Do not overload sockets and power strips. Do not touch the AC adaptor with wet hands. There is a risk of electric shock.
4. Use the AC adaptor in a place not exposed to water. Water can cause fire or electric shock.
5. Do not place vases or other containers of water on the AC adaptor. Water can cause fire or electric shock.
6. Do not install power cords near furnaces or other heaters.
7. When unplugging from the outlet, do not pull on the power cord. You need to grab the body of the AC adapter plug. Plug the AC adapter into the outlet as far as possible.

Assembly Diagram



Connection Socket

Power cord connection

First, plug one end into the power outlet on the jacks panel on the back of the piano and the other end into a household power outlet. (Reversing the order will produce small sparks, which is normal)

Audio Input/Output Jack

1. The audio output jack can be connected to large speaker devices.
2. The audio input jack can be connected with external audio play devices for playback on the piano.
3. 3.5mm headphone jack.
4. When the headphone is connected, the built-in speaker output will stop.

USB Transmission Interface

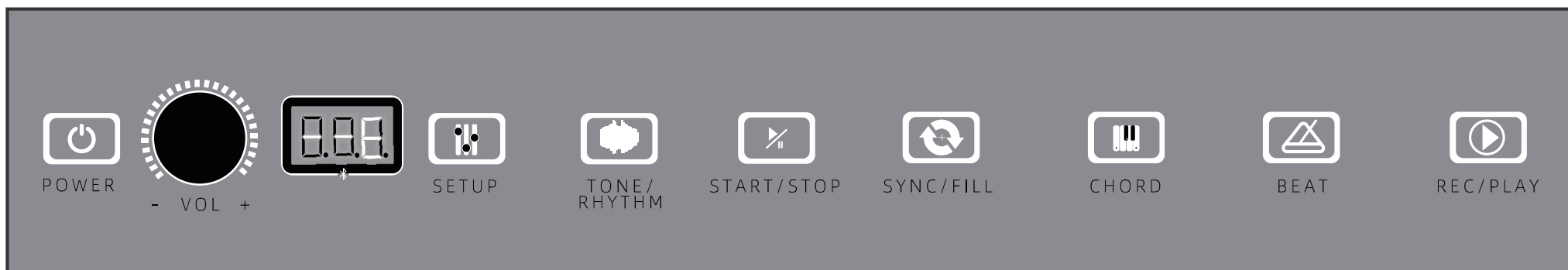
The USB MIDI interface can connect with a computer or Mac for music composition and arrangement. When the connection succeeds, edited audios and preset accompaniment of the software can be played out through the piano, you can play along with the accompaniment.

Headphone output

This product has a headphone output terminal, so turn down the volume first before connecting headphones. Once connected, adjust the volume to an appropriate level.



Function Instruction Diagram



Operation Instruction

1.POWER

1. Touch the "Power" key, the power indicator light and LCD display will light up, and you can enter the playing state.
2. Play music on the piano keyboard.
3. When not in use temporarily, please turn off the power.
●The processor chip of this product is complex, similar to a computer system, sometimes it cannot respond, please turn off the power switch and turn it on again to work normally.

2.TONE

1. Touch the "Tone/Rhythm" button and the indicator light will light up to enter the tone mode. The default sound mode when starting up.
2. Press the volume knob and adjust the volume knob at the same time to select any tone, and the LCD will display the corresponding tone number. There are 128 voices in total.

3.RHYTHM

1. Touch the "Tone/Rhythm" button, the indicator light goes out and enters the rhythm mode.
2. Press the volume knob and adjust the volume knob at the same time to select any rhythm, and the corresponding rhythm number will be displayed on the LCD.
3. Touch the "Start/Stop" button to start playing the selected rhythm, and then touch this button to stop playing the rhythm. There are 100 rhythms in total.

4.DEMO

1. Press the first and last keys at the same time, the LCD will display the current demo song number, and start playing the demo song.
2. Entering the demo song mode can also select different demo songs by adjusting the volume knob.

Press the volume knob to enter the volume adjustment mode to adjust the volume (0-64) and the default is 55 when the power is turned on.

3. Press the first and last white keys simultaneously again to stop playing the demonstration song.

Note!

The built-in music library of this product contains 80 songs. The built-in melody can be used for playback and appreciation, or you can use the learning function to follow and play the melody on the keyboard.

5.SYNC/FILL

Touch the "SYNC/FILL" button, and the corresponding indicator light will flash and the sync function will start. Press any key, the rhythm will play synchronously, and touch the "SYNC/FILL" button during the rhythm playing to insert a short section of drumbeat.

6.BEAT

Touch the "BEAT" button, the corresponding indicator light will flash with the beat, displaying "001", which is the first beat,

The second touch displays "002", which is the second beat, the third touch displays "003", which is the third beat,

The fourth touch displays "004", which is the fourth beat, and the fifth touch stops the BEAT.

7.CHORD

1. Select the rhythm you want to play, refer to the rhythm operation in point 4 for details.
2. Touch the "chord" button and the corresponding indicator lights up, and the LCD shows that the chord is starting to enter the chord state.

Use the chord method of single-finger multiplexing, and if it conforms to the multi-finger chord playing method, the piano will respond to multi-finger chords;

Any playing method that does not conform to multi-finger chords will be recognized and responded according to single-finger chords.

3. To play chords, you can perform different performances on the accompaniment keyboard (1-34 keys from the left) according to different fingerings.

4. Touch the "chord" button again to turn off the chord status.

8.REC/PLAY

1. Keyboard note recording:

Press and hold the first white key on the left and touch the "REC/PLAY" key at the same time to enter the recording mode and play the keys to enter the note recording, Touch "REC/PLAY" again to end the recording.

In the keyboard note recording mode, the timbre can be changed for recording, and 5000 notes can be recorded.

2. Playback Touch "REC/PLAY" to play the recorded notes.

3. Turn off the power to clear the recording.

9.SETUP

1. Touch the "SETUP" button for the first time to enter the transpose, the LCD displays "0", and the volume knob can be used to adjust the transpose size (-12-12).

2. Touch the "SETUP" button for the second time to enter the speed mode, and the LCD will display "120", and the speed can be adjusted by the volume knob (20-280).

3. Touch the "SETUP" button for the third time to enter the accompaniment volume mode, the LCD displays "24", and the volume knob can be used to adjust the accompaniment volume (0-32).

4. Touch the "SETUP" button for the fourth time to enter the equalizer bass mode, the LCD displays "96", and the volume knob can be used to adjust the bass size (0-127).

5. Touch the "SETUP" button for the fifth time to enter the treble mode of the equalizer, the LCD will display "96", and the volume knob can be used to adjust the treble size (0-127).

6. Touch the "SETUP" button for the sixth time to enter the percussion selection mode (61 percussion instruments), and use the volume knob to turn on or off the percussion function.

7. Touch the "SETUP" button for the seventh time to enter the double-keyboard selection mode, and use the volume knob to turn on or off the double-keyboard function.

8. Touch the "SETUP" button for the eighth time to enter the dual-tone selection mode, and use the volume knob to turn on or off the dual-tone function.

9. Touch the "SETUP" button for the ninth time to enter the strength selection mode, LCD display, use the volume knob to adjust the strength level (light-standard-heavy-off).

10. Touch the "SETUP" button for the tenth time to enter the reset selection mode, and then touch the "CHORD" button to return to the initial state.

10.BLUETOOTH

Turn on the power and automatically connect to Bluetooth, connect Bluetooth password: 8888

1. Connect mobile phone, tablet, computer: turn on the bluetooth device such as the mobile phone, connect "piano-audio XXXX", and complete the connection with the piano

2. Audio bluetooth introduction: use the mobile phone and other devices to play music APP, connect the electronic piano through bluetooth, you can play music on the piano and enjoy songs.

3. Data bluetooth introduction: use the mobile phone and other devices to connect the electronic piano with the music playing app through bluetooth, you can play the game and practice songs on the piano.

NOTICE:

After starting the bluetooth, there will be bluetooth communication, data scanning chip motherboard sound, which is a normal phenomenon, please rest assured to use,

After using Bluetooth, please turn off Bluetooth in time, and disconnect the Bluetooth of mobile phones and other devices.

Artplay1 XXXX: XXXX represents the last 4-digit code for connecting Bluetooth devices such as mobile phones, because each Bluetooth plate is different, So the connection codes are different, which is normal. Bluetooth connection password: 8888

Maintenance

Excellent maintenance can reduce trouble and extend the service life of the digital piano.

Avoid heat, humidity, and direct sunlight. Do not over-expose the piano to sunlight, air conditioner, or high-temperature places.

Do not place the piano close to the radio or television in case it may cause electronic signal interference between your radio and television. If interference happens, move the piano away and the interference will disappear.

Do not clean the digital piano with oil paint, or thinner or similar chemicals.

You can wet a soft cloth with a neutral solution or a neutral cleaner to clean the piano.

Avoid collision in case it causes damage to the piano shell and its internal electronics components.

When the temperature is too high or too low, the display on the LED screen will fade and be difficult to recognize.

At room temperature, the LED screen display will go back to normal.

Warranty

1. From the date of payment, if there are any quality problems under proper use, you will enjoy a one-year free warranty service.

2. During warranty, if the piano was damaged or fails to respond for improper use, we will not provide free spares.

3. Free warranty is not available under the following circumstances.

- a: No evidence to prove the date of purchase.
- b: The purchase date has been altered.
- c: Damage or failure caused by improper use.
- d: Damage or failure due to force majeure such as fire disaster, flood, earthquake, and lightning strike.
- e: Damage or failure due to unauthorized disassembly.

FCC WARNING

This device complies with part 15 of the FCC Rules. Operation is subject to the following two conditions: (1) This device may not cause harmful interference, and (2) this device must accept any interference received, including interference that may cause undesired operation.

Note: This equipment has been tested and found to comply with the limits for a Class B digital device, pursuant to part 15 of the FCC Rules. These limits are designed to provide reasonable protection against harmful interference in a residential installation. This equipment generates, uses and can radiate radio frequency energy and, if not installed and used in accordance with the instructions, may cause harmful interference to radio communications. However, there is no guarantee that interference will not occur in a particular installation. If this equipment does cause harmful interference to radio or television reception, which can be determined by turning the equipment off and on, the user is encouraged to try to correct the interference by one or more of the following measures:

- Reorient or relocate the receiving antenna.
- Increase the separation between the equipment and receiver.
- Connect the equipment into an outlet on a circuit different from that to which the receiver is connected.
- Consult the dealer or an experienced radio/TV technician for help.

Note: The Grantee is not responsible for any changes or modifications not expressly approved by the party responsible for compliance. Such modifications could void the user's authority to operate the equipment.

The device has been evaluated to meet general RF exposure requirement.

This equipment complies with FCC's RF radiation exposure limits set forth for an uncontrolled environment. This device and its antenna(s) must not be co-located or in conjunction with any other antenna or transmitter.