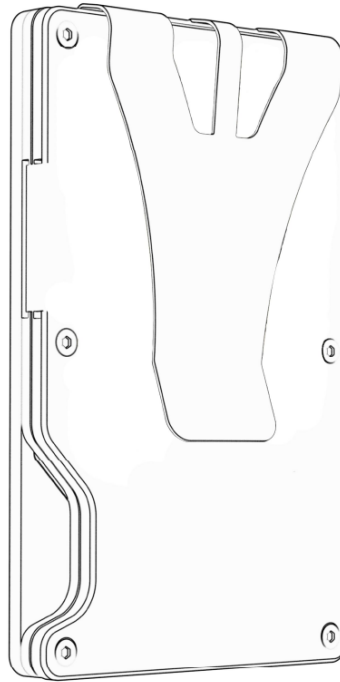
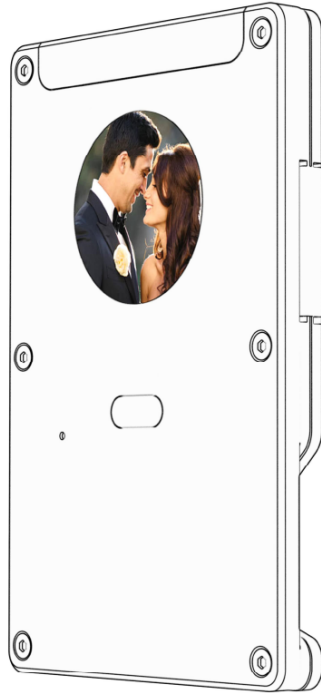
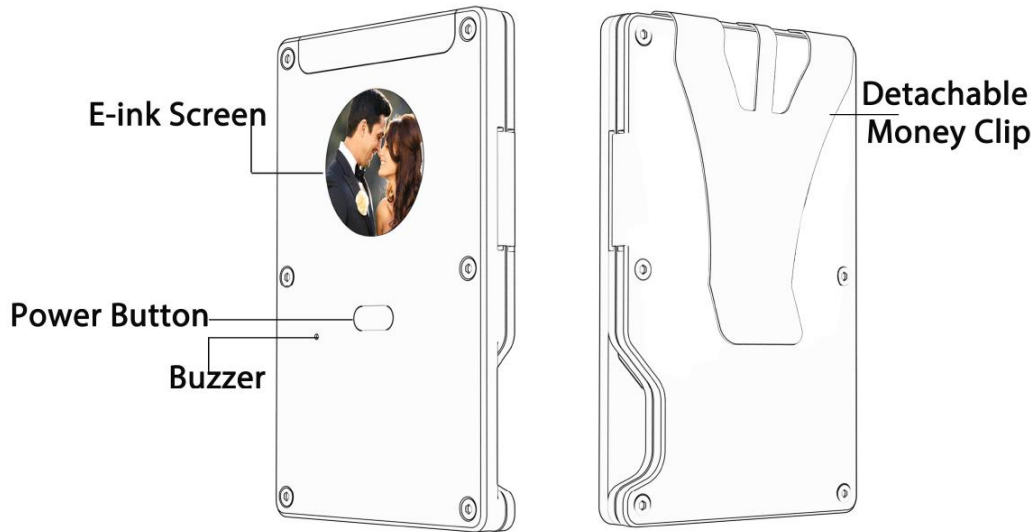


# FindXeink

## User Manual

---





## Before Starting

- 1 Please Scan the QR code on the Left and Download FindXeink App. Or Search 'FindXeink' on the App Store.

The App's Icon Should Look Like This:

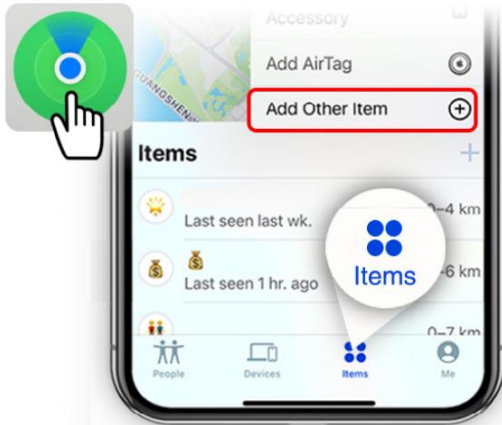
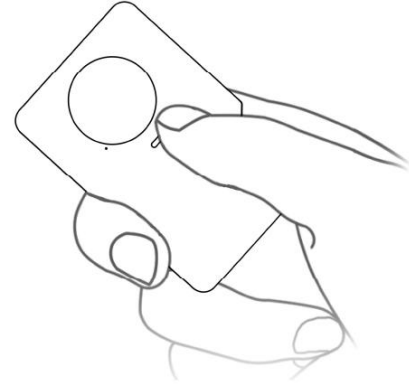


## FindXeink



- 2** Turn on Bluetooth & Location Services of your device. Make sure your Apple device is on iOS 14.0 or higher.

- 3** Press the button on the back to turn on Eink. Now it could be detected by your devices.  
(Hold the button while its on to turn it off)



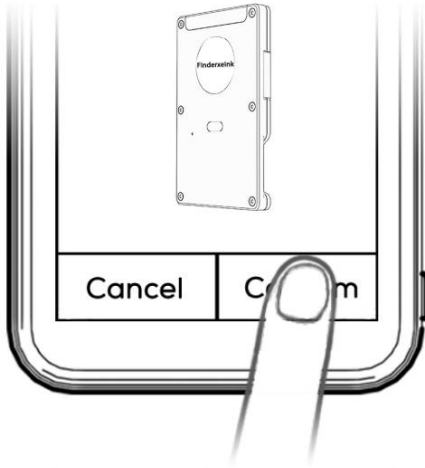
- 4** Open up 'Find My' App Tab 'Items' -> 'Add Other Item'. It will start searching and pop up the Eink in seconds,

- 5** Press the 'Connect' button. Now the Eink could be located by your iOS devices.



## FindXeink

- 6 Turn on the E Ink. Open 'FindXeink' App, Tab the plus symbol on the up right corner.

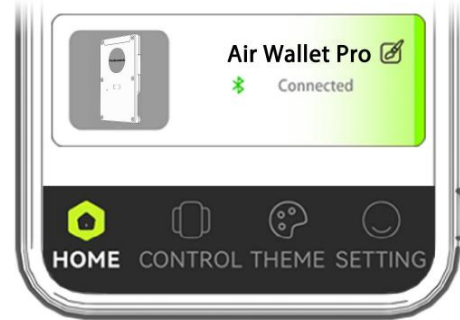


## Device Binding

- 7 The E Ink will pop up in a few sec, tab 'Confirm' to bind it with your phone.



- 8 If everything works fine. The E Ink will appear in the 'HOME' page.



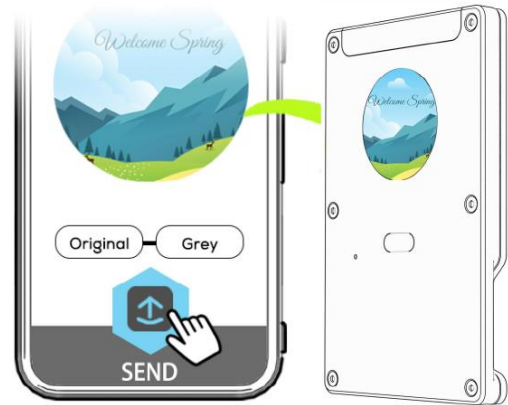
- 9 Tab into 'CONTROL' page, press the 'Local' button. Then select the screen shape of your E Ink.



## FindXeink



**10** Move and Scale the display area to a proper position.

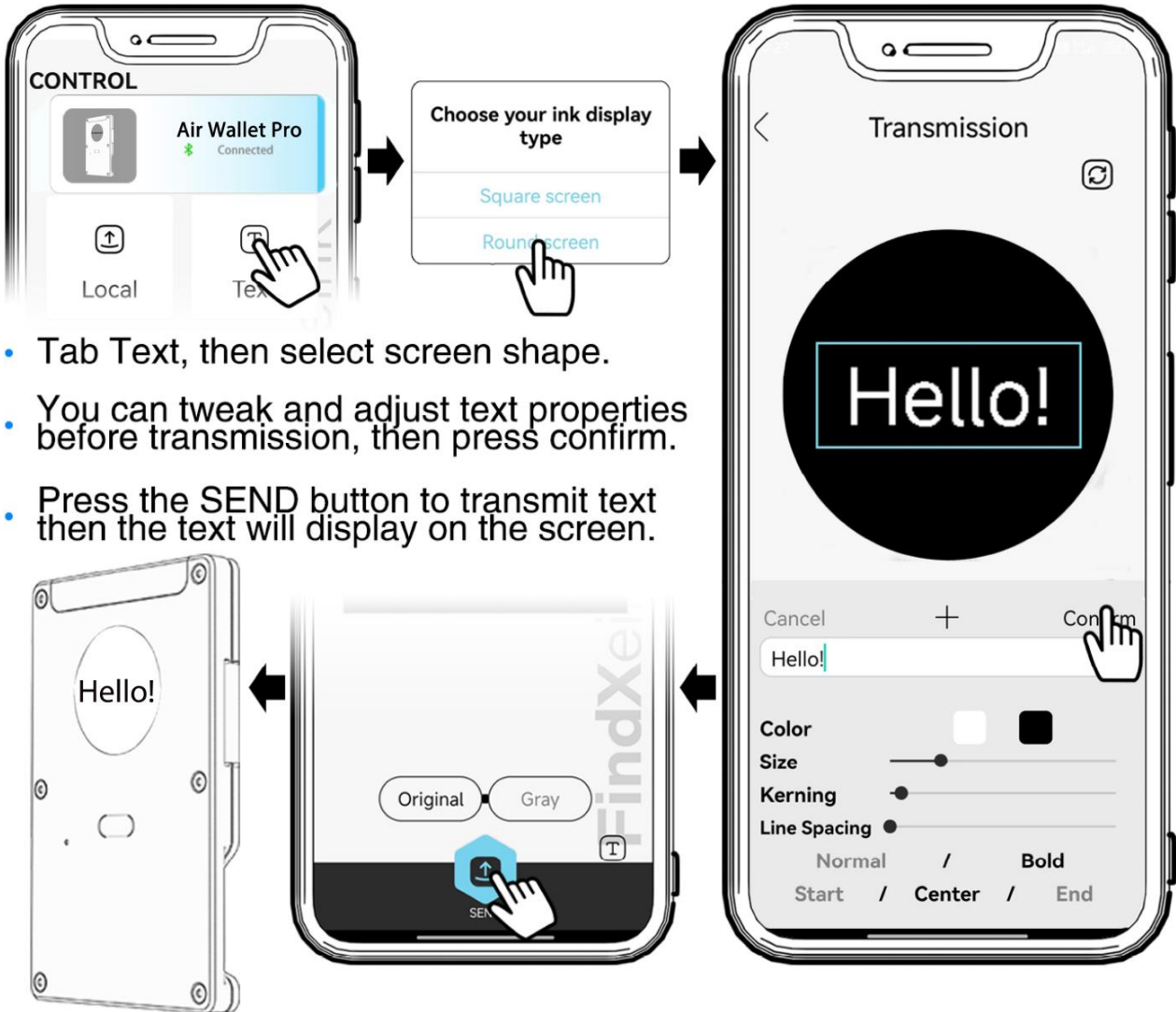


**11** Tab Confirm  
Then click **SEND** to procee transmission.



- You can also go to **THEME** page and have a try with default image.

On CONTROL page, you can also transmit text to display.





## FindXeink



- Another Contact button you can leave your contact info in case someone else find it.

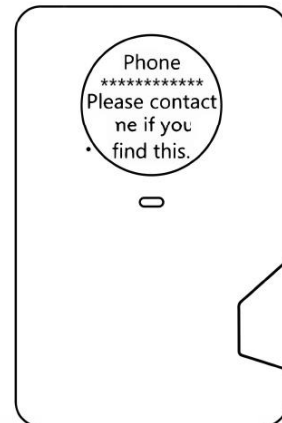


Single click the button after wake it up. Then the screen will change to contact display which showing the saved contact info.

## Contact



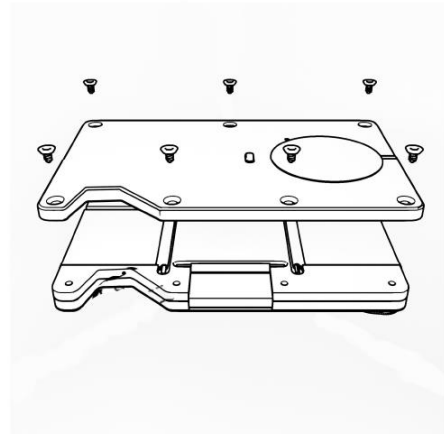
- It can save your contact info by text or transfer it to a QR code.



- Leave your contact info and let others help you find it in case you lose it.

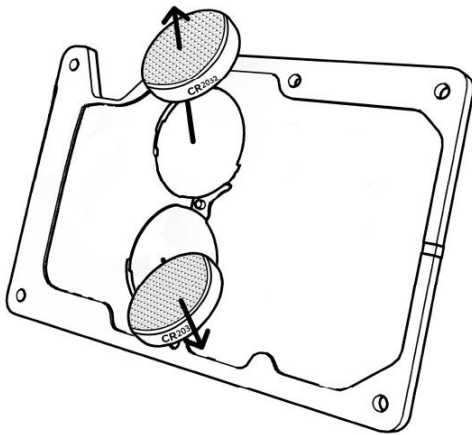


## Replace Battery



**1** Using the included screwdriver remove the front plate.

**2** Take out the coin battery. (Lasts one year all CR2032)



**3** Replace it with new CR-2032 battery and put it in.



**4** Place back the front plate and fix up the screws.







## FindXeink

- a) Remove and immediately recycle or dispose of used batteries according to local regulations and keep away from children. Do NOT dispose of batteries in household trash or incinerate.
- b) Used batteries may also cause severe injury or death.
- c) Call a local poison control center for treatment information.
- d) Battery Type:CR2032
- e) Nominal Battery Voltage:3.0V
- f) The batteries include are non-rechargeable batteries and they are not to be recharged.
- g) Do not force discharge, recharge, disassemble, heat above 60°C or incinerate. Doing so may result in injury due to venting, leakage or explosion resulting in chemical burns.

## FindXeink

- h) While replace the batteries, make sure their negative ( - ) side up.
- i) Do not mix old and new batteries, different brands or types of batteries, such as alkaline, carbon-zinc, or rechargeable batteries.
- j) Remove and immediately recycle or dispose of batteries from equipment not used for an extended period of time according to local regulations.
- k) Always completely secure the battery compartment. If the battery compartment does not close securely, stop using the product, remove the batteries, and keep them away from children.

 <b>WARNING</b>	
<ul style="list-style-type: none"><li>• <b>INGESTION HAZARD:</b> This product contains a button cell or coin battery.</li><li>• <b>DEATH</b> or serious injury can occur if ingested.</li><li>• A swallowed button cell or coin battery can cause <b>Internal Chemical Burns</b> in as little as <b>2 hours</b>.</li><li>• <b>KEEP</b> new and used batteries <b>OUT OF REACH of CHILDREN</b></li><li>• <b>Seek</b> immediate medical attention if a battery is suspected to be swallowed or inserted inside any part of the body.</li></ul>	

### FCC Statement

This equipment has been tested and found to comply with the limits for a Class B digital device, pursuant to Part 15 of the FCC Rules. These limits are designed to provide reasonable protection against harmful interference in a residential installation. This equipment generates uses and can radiate radio frequency energy and, if not installed and used in accordance with the instructions, may cause harmful interference to radio communications. However, there is no guarantee that interference will not occur in a particular installation. If this equipment does cause harmful interference to radio or television reception, which can be determined by turning the equipment off and on, the user is encouraged to try to correct the interference by one or more of the following measures:

- Reorient or relocate the receiving antenna.
- Increase the separation between the equipment and receiver.
- Connect the equipment into an outlet on a circuit different from that to which the receiver is connected.
- Consult the dealer or an experienced radio/TV technician for help.

This device complies with part 15 of the FCC Rules. Operation is subject to the following two conditions: (1) This device may not cause harmful interference, and (2) this device must accept any interference received, including interference that may cause undesired operation.

Changes or modifications not expressly approved by the party responsible for compliance could void the user's authority to operate the equipment.

The device has been evaluated to meet general RF exposure requirement. The device can be used in portable exposure condition without restriction.