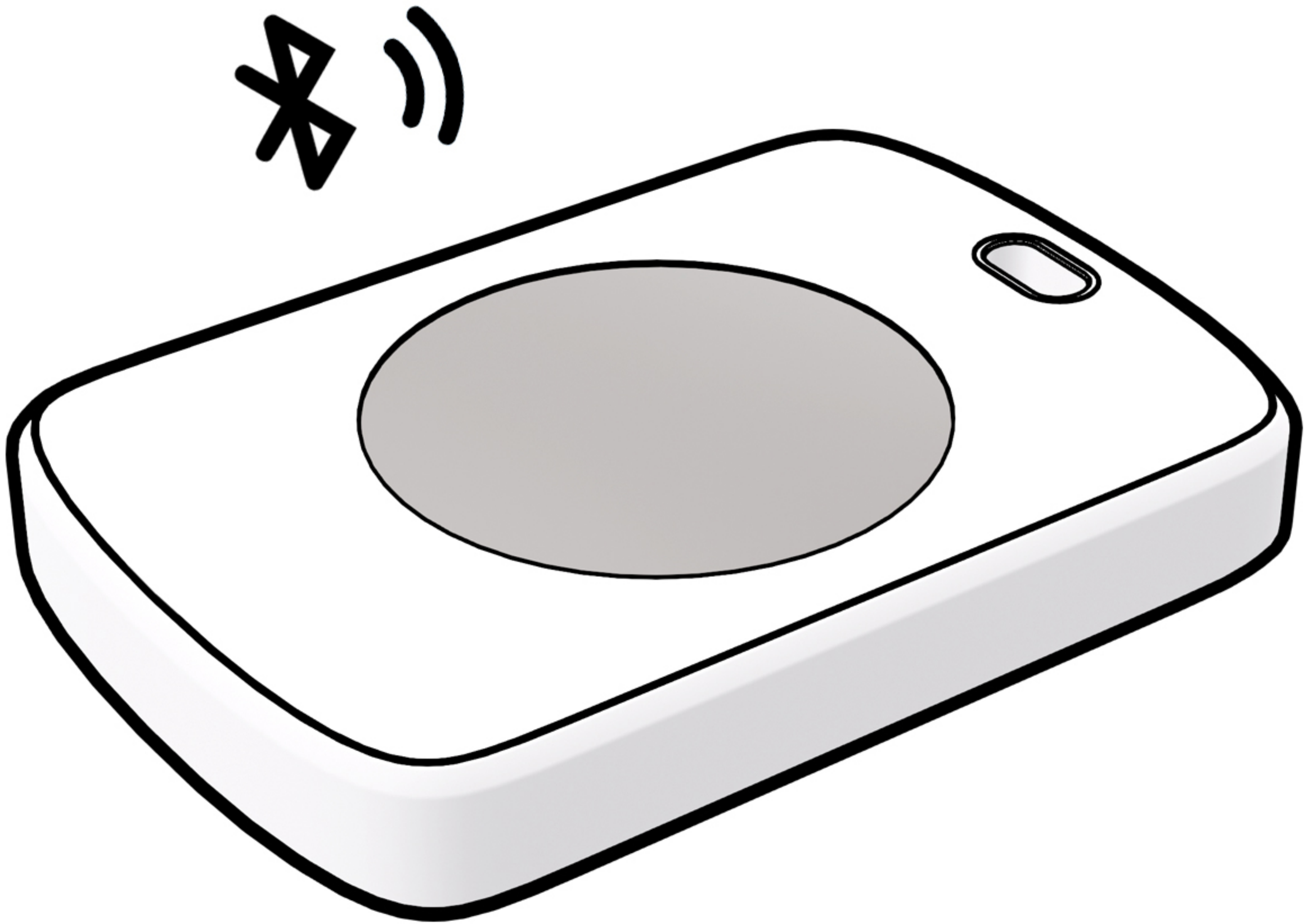
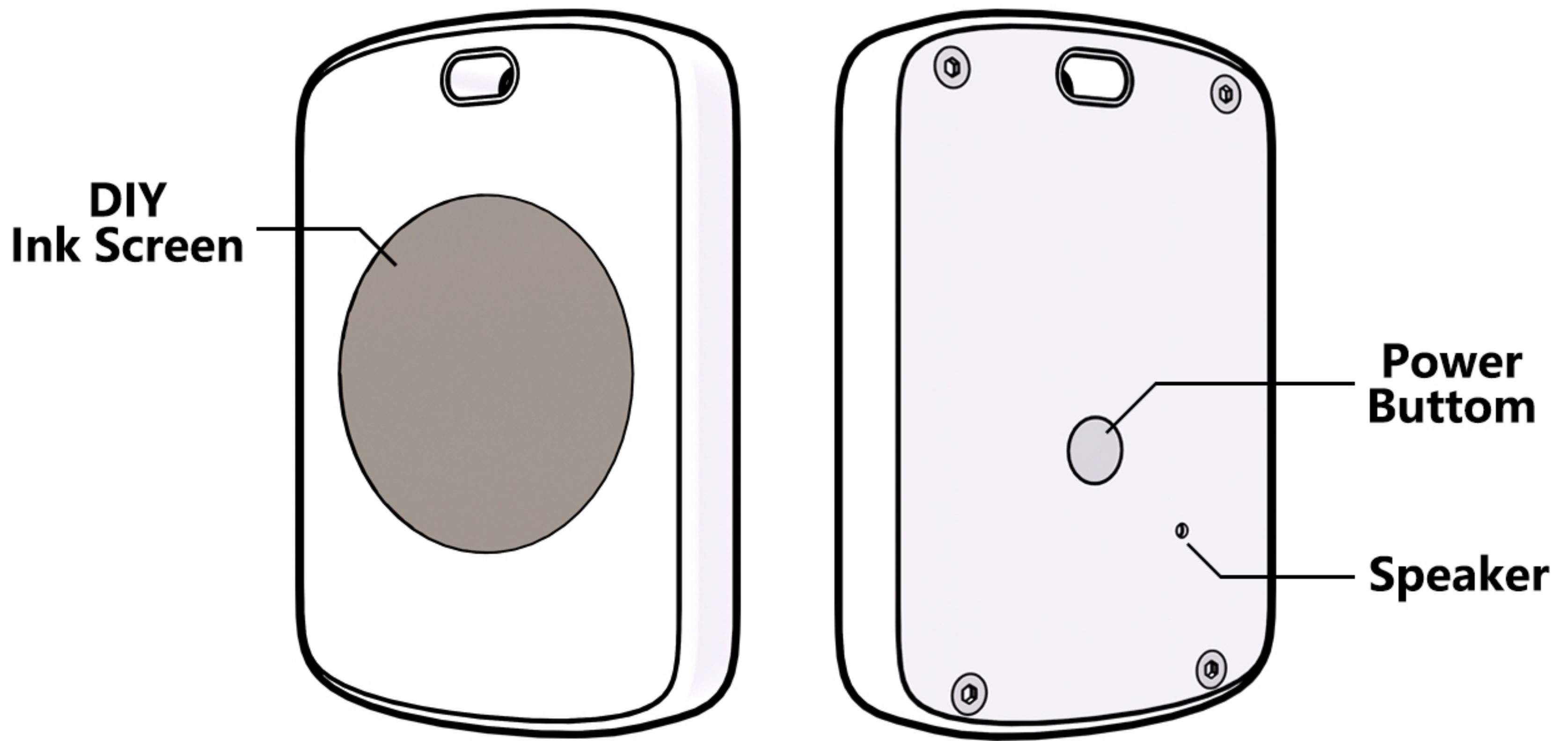


FindXeink

User Manual





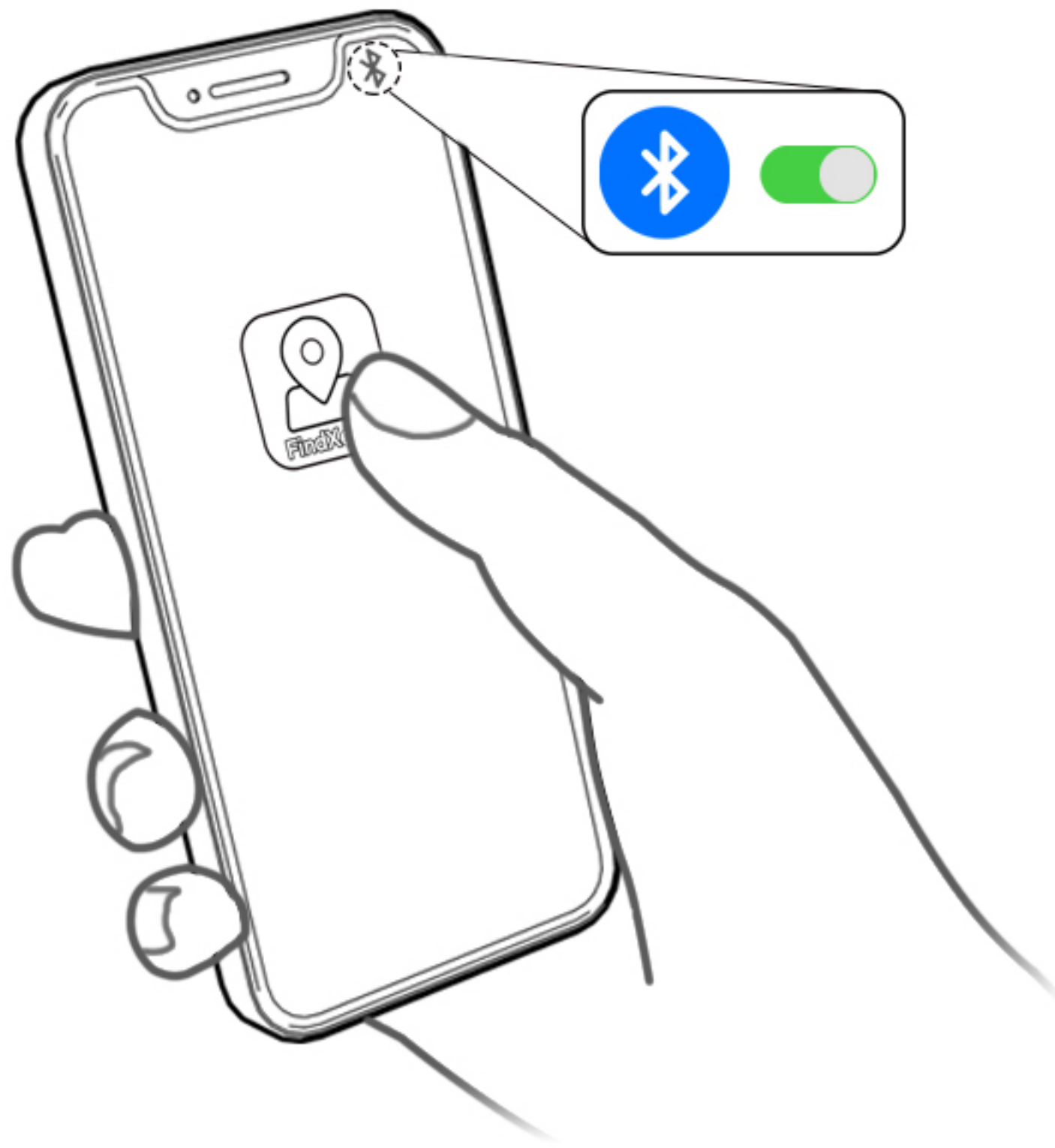
Before Starting

Please Scan the QR code on the Left and Download FindXeink App. Or Search 'FindXeink' on the App Store.

The App's Icon Should Look Like This:



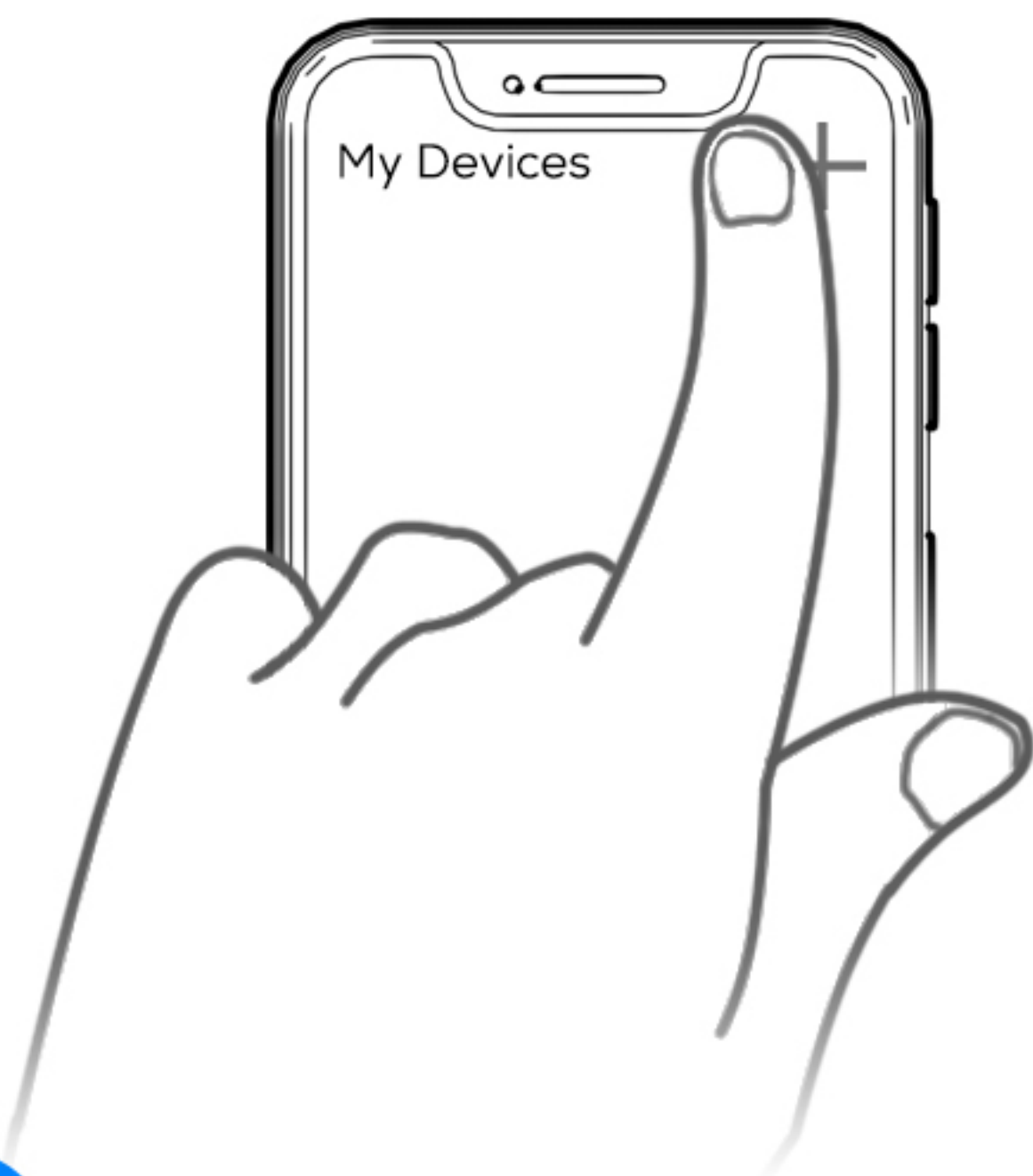
QUICK START



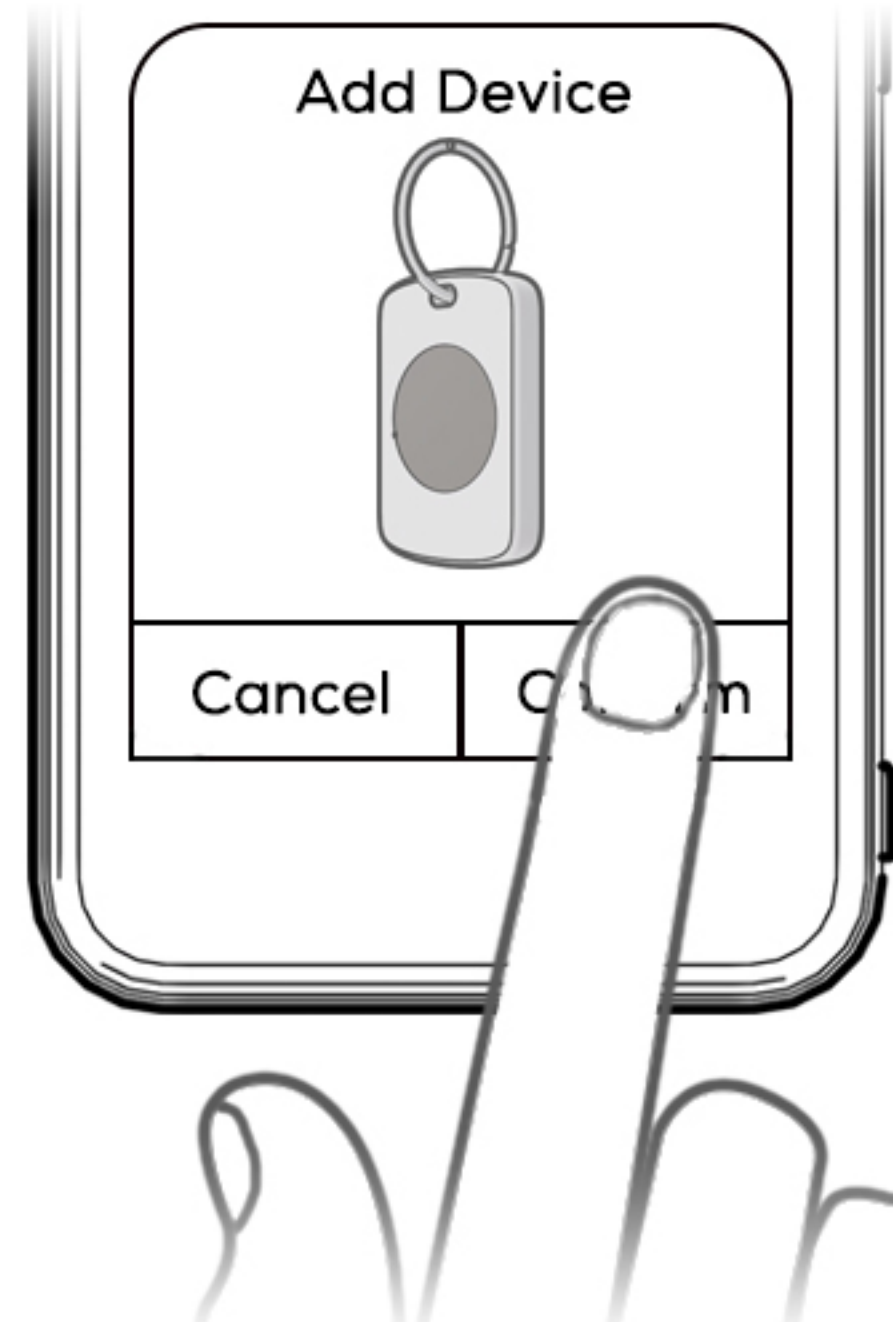
1 Open FindXeink App, Turn on Bluetooth Service of your device.



2 Press the button on the back to turn on.

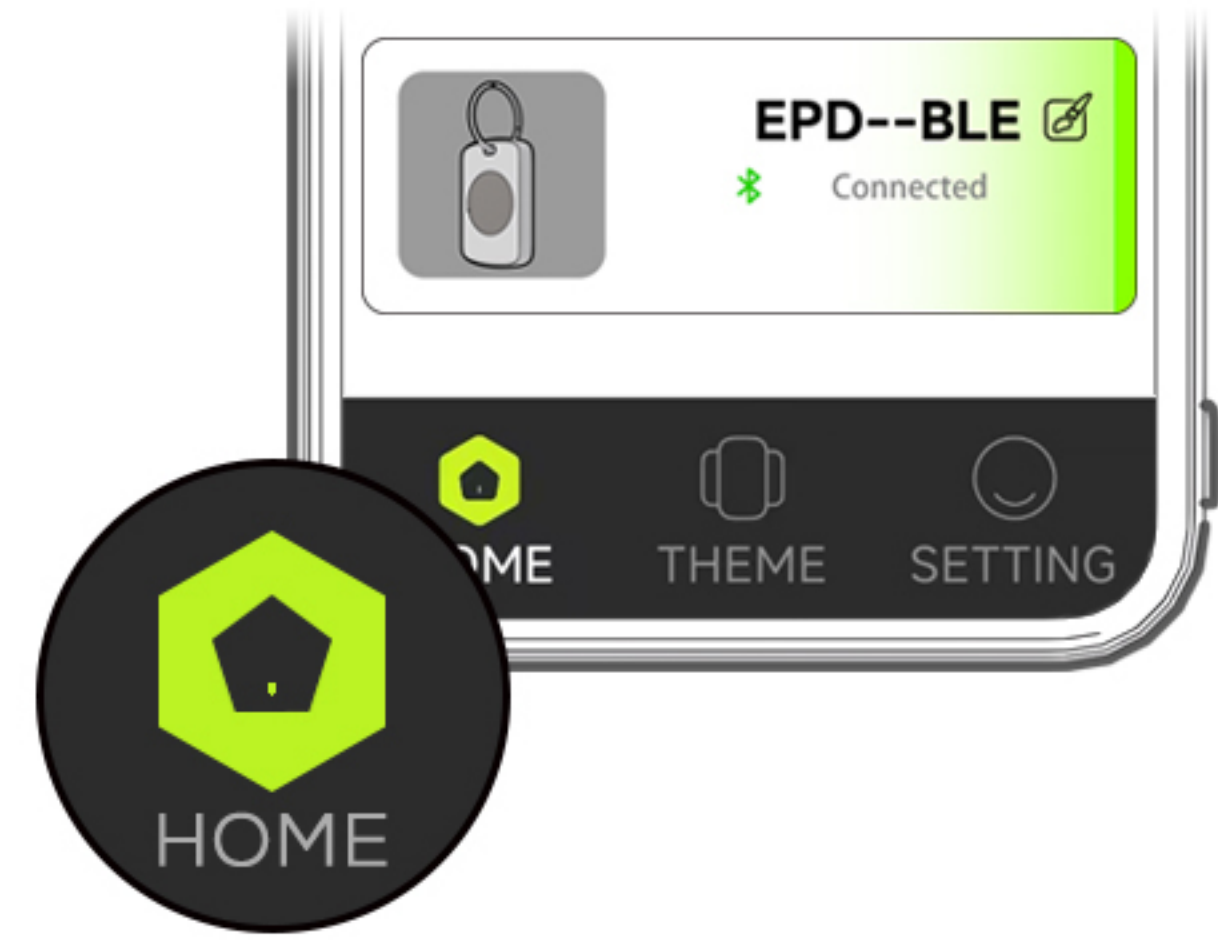
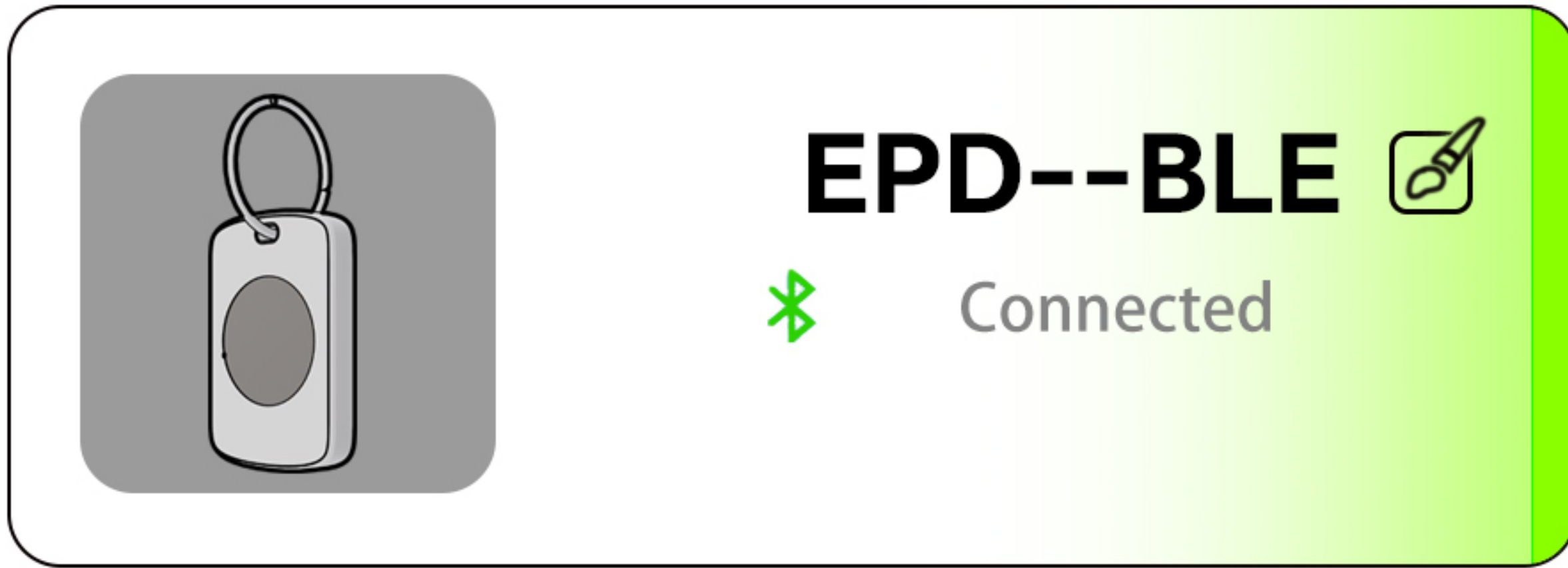


3 Tab (+) button on the up right corner of home page.

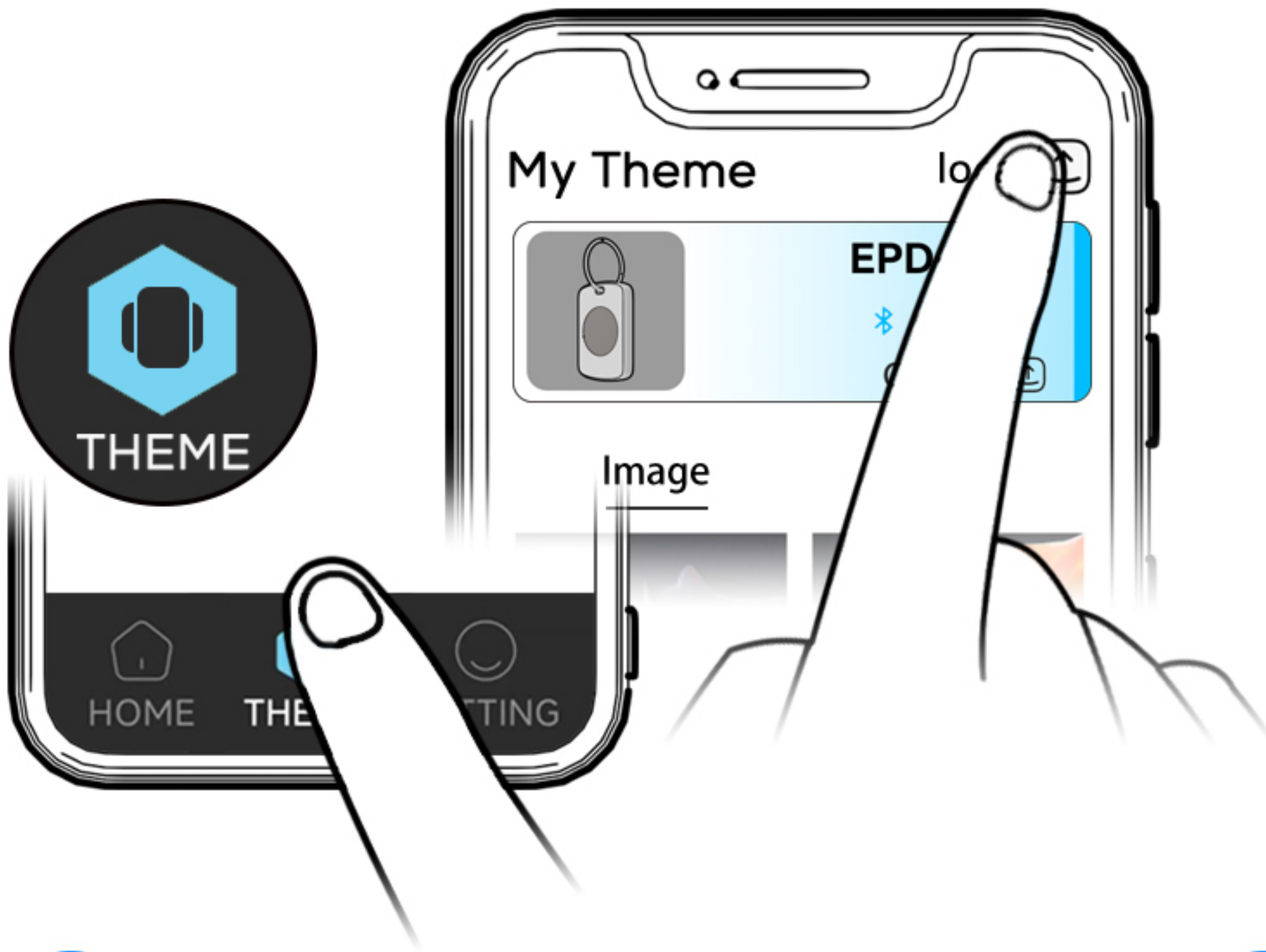


4 Then press Confirm to connect it.

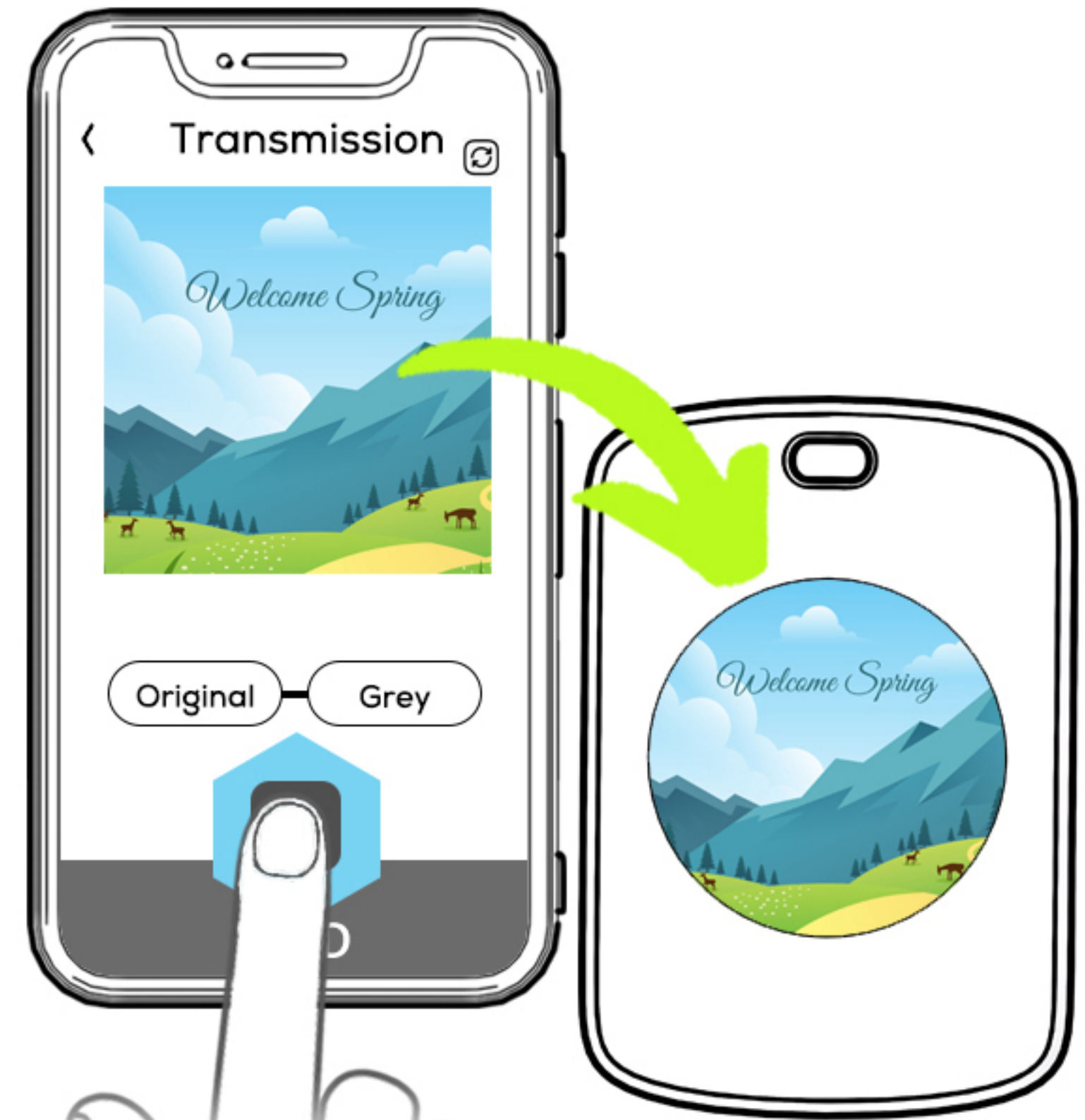
QUICK START



If everything works fine, you can now see the device connected at HOME page.



5 Tab into THEME page and click (📷) button on the up right corner.

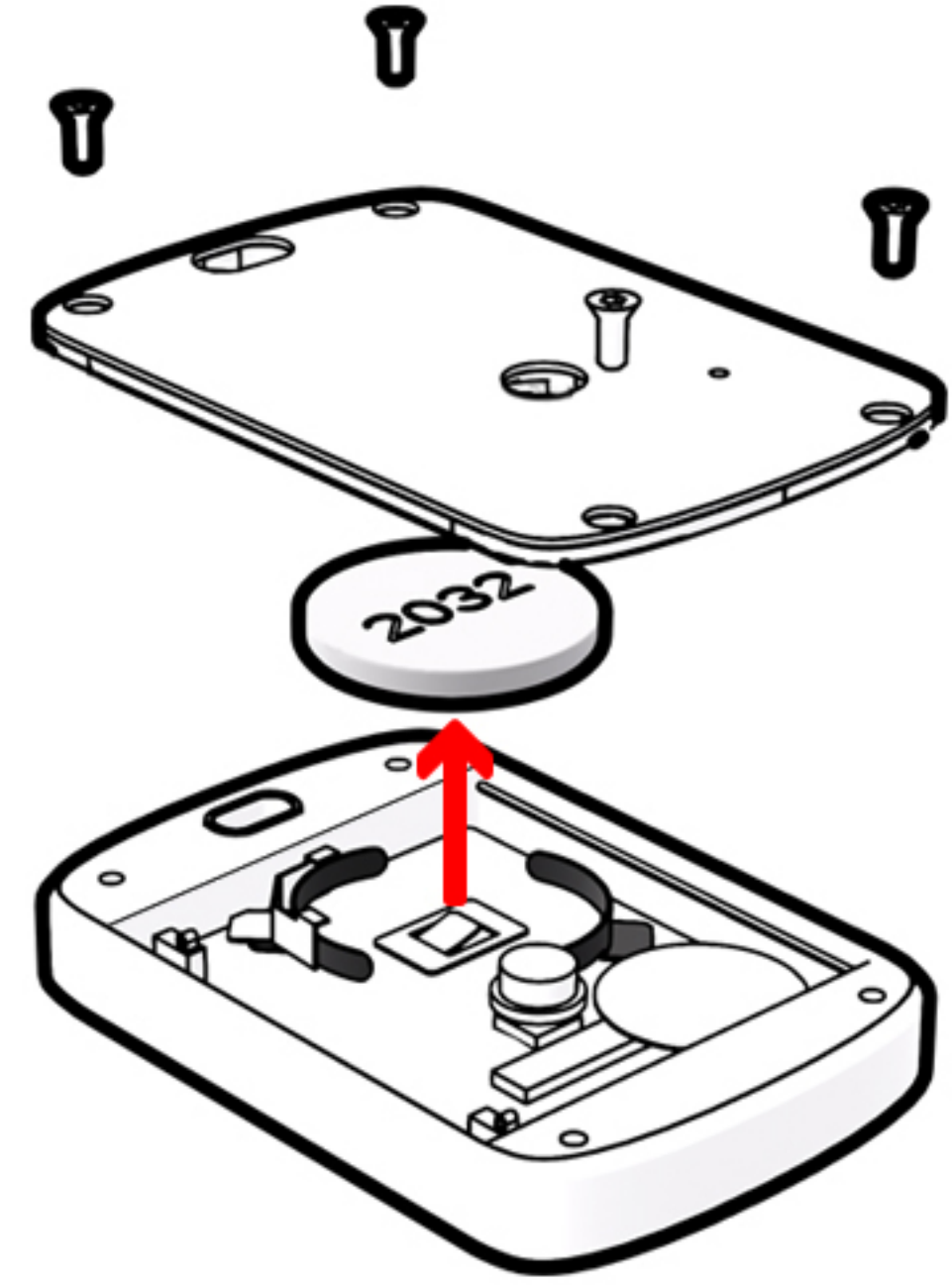


6 Select an image from your album. Press SEND to procee transmission.

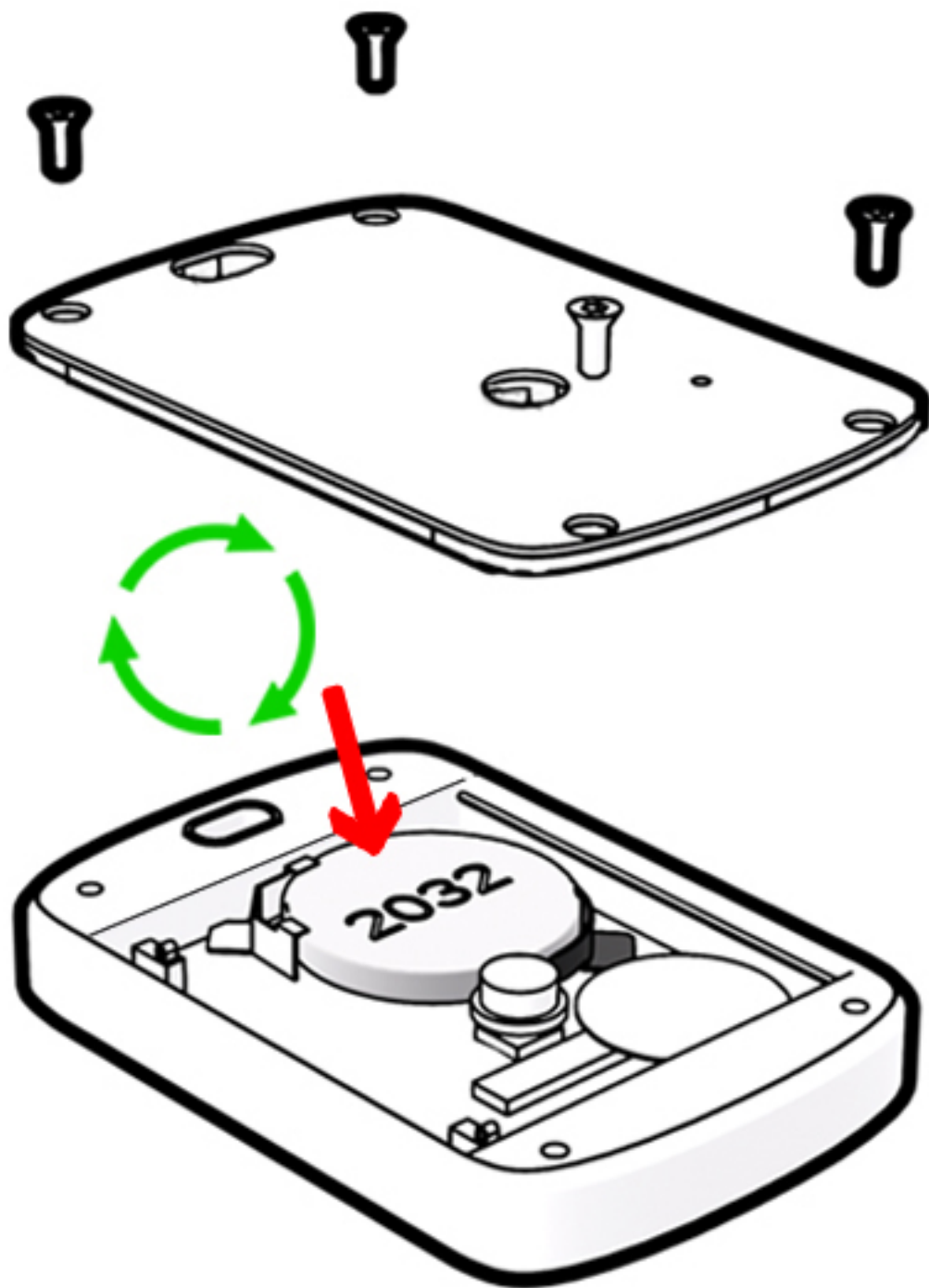
Replace Battery



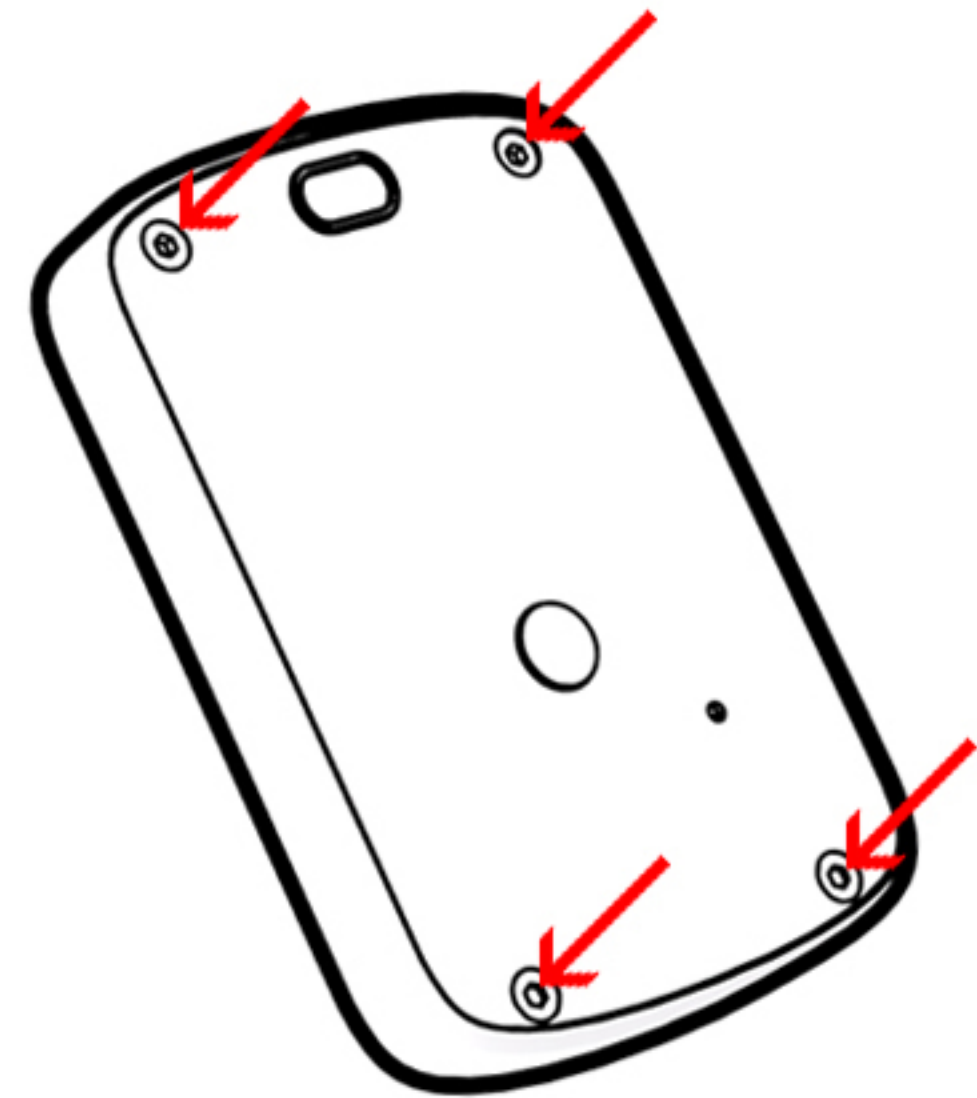
1 Use included driver to take off the back plate.



2 Take out the coin battery. (Lasts 1 year per CR2032)



3 Replace it with a new CR2032 battery and put it in.



4 Place back the back plate and fix up the screws.

This device complies with part 15 of the FCC Rules. Operation is subject to the following two conditions: (1) This device may not cause harmful interference, and (2) this device must accept any interference received, including interference that may cause undesired operation.

Any Changes or modifications not expressly approved by the party responsible for compliance could void the user's authority to operate the equipment.

Note: This equipment has been tested and found to comply with the limits for a Class B digital device, pursuant to part 15 of the FCC Rules. These limits are designed to provide reasonable protection against harmful interference in a residential installation. This equipment generates uses and can radiate radio frequency energy and, if not installed and used in accordance with the instructions, may cause harmful interference to radio communications. However, there is no guarantee that interference will not occur in a particular installation. If this equipment does cause harmful interference to radio or television reception, which can be determined by turning the equipment off and on, the user is encouraged to try to correct the interference by one or more of the following measures:

- Reorient or relocate the receiving antenna.
- Increase the separation between the equipment and receiver.
- Connect the equipment into an outlet on a circuit different from that to which the receiver is connected.
- Consult the dealer or an experienced radio/TV technician for help.

FCC Radiation Exposure statement

The device has been evaluatec to meel general RF exposure requirement. The device can be used in porlable exposure condition without restriction.