



# 蓝牙天线规格

---

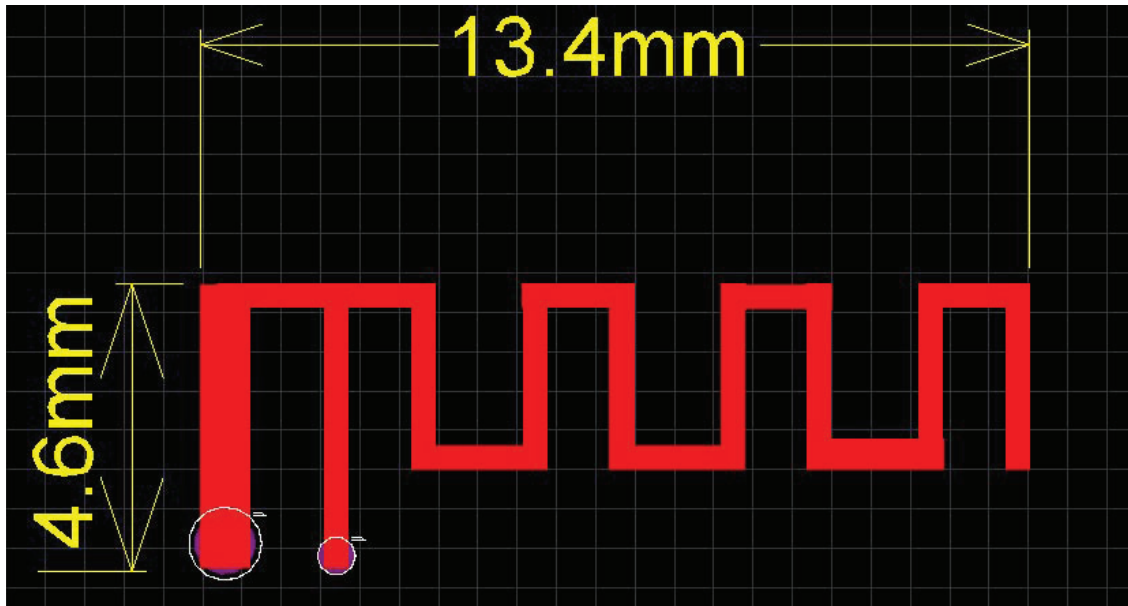
深圳市芯海科技有限公司

版权所有 不得复制

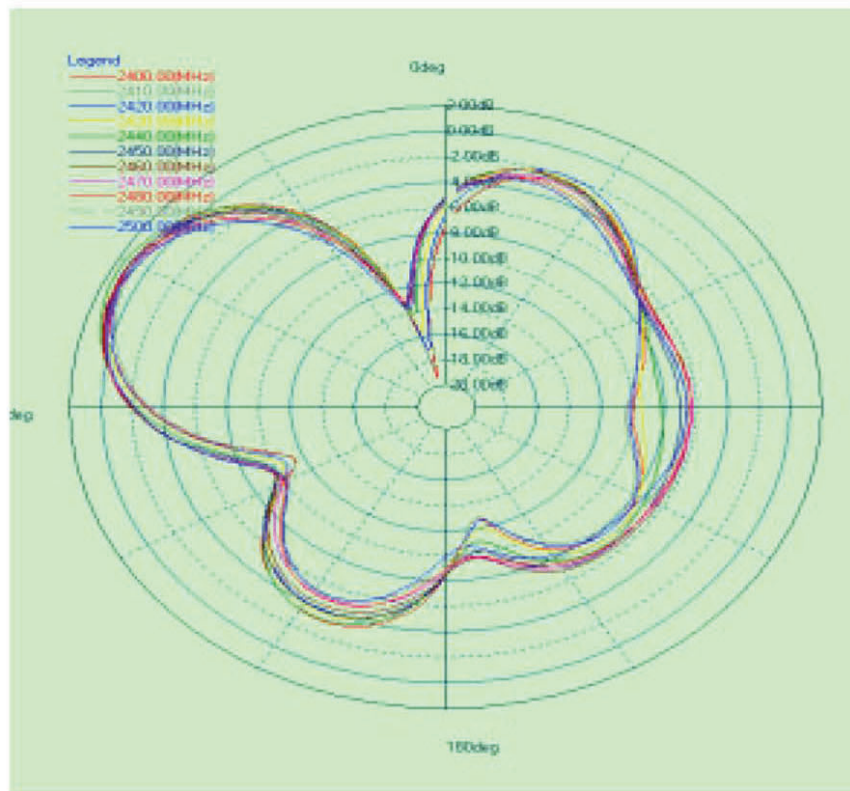
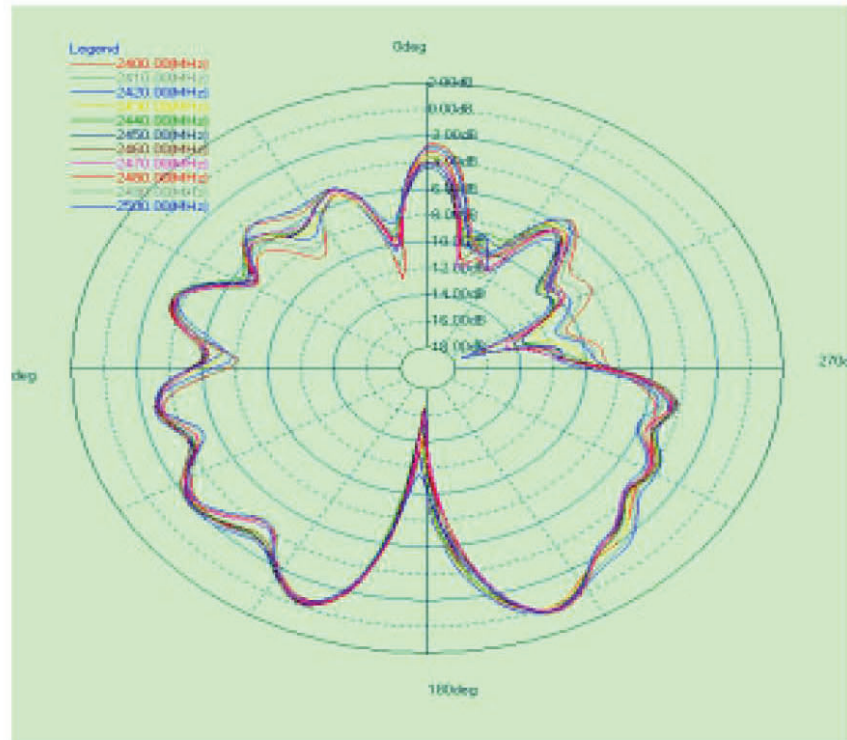
## 1: Antenna Description

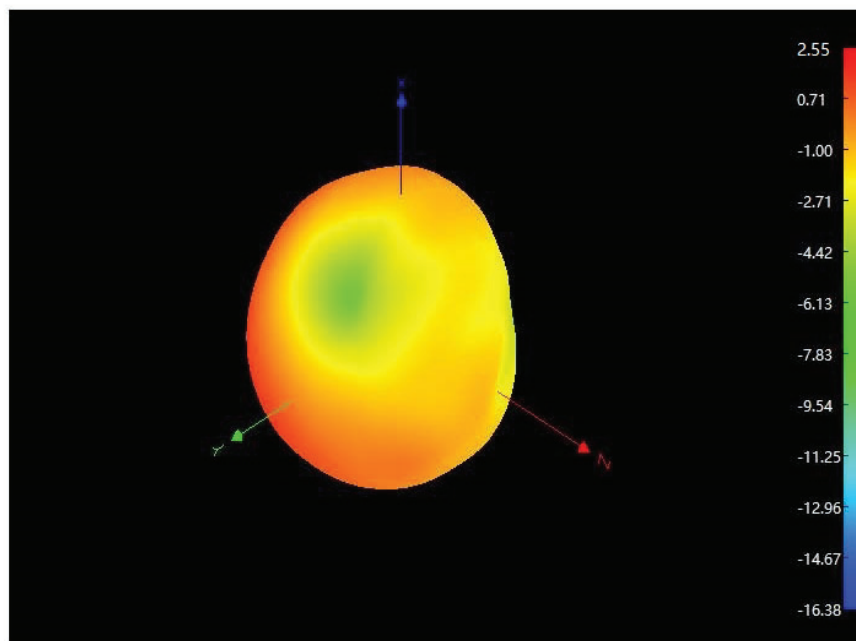
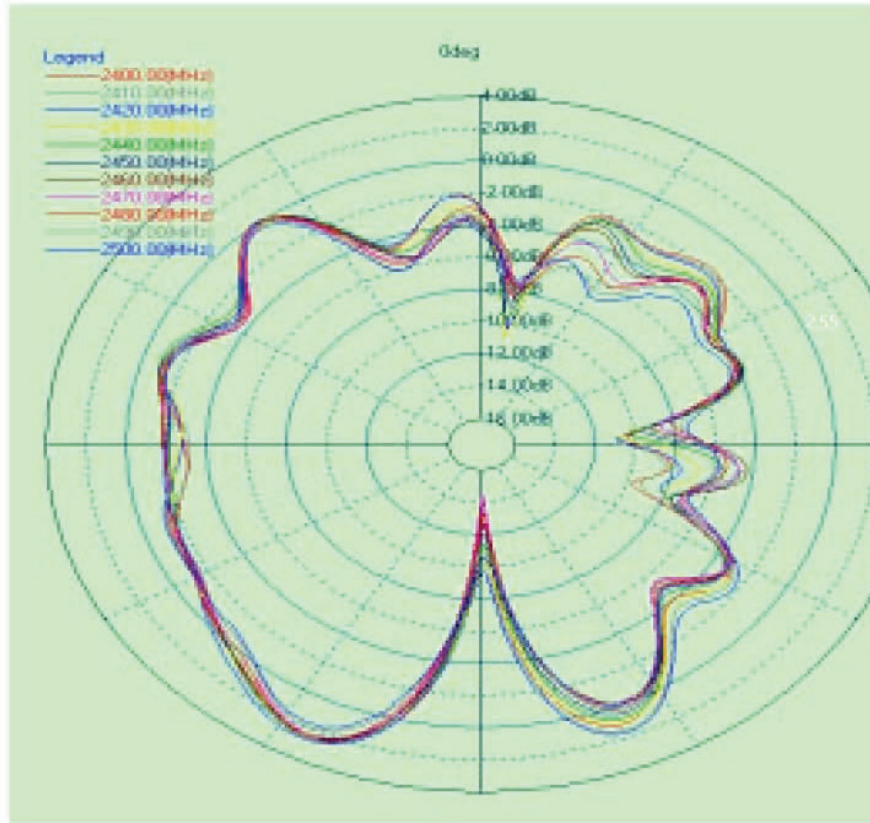
Manufacture	Xingning Jingweijin Electronics Co., Ltd
Manufacturer's address	Xingning City, Dongguan Shijie (Xingning) Transfer Park South District Jingweijin Industrial Park 2
Antenna Type	PCB Antenna
Antenna peak gain	2.5dBi
Frequency range	2.4GHz~2.5GHz
Connect type	Direct Connect

## 2: Antenna picture on the PCB board



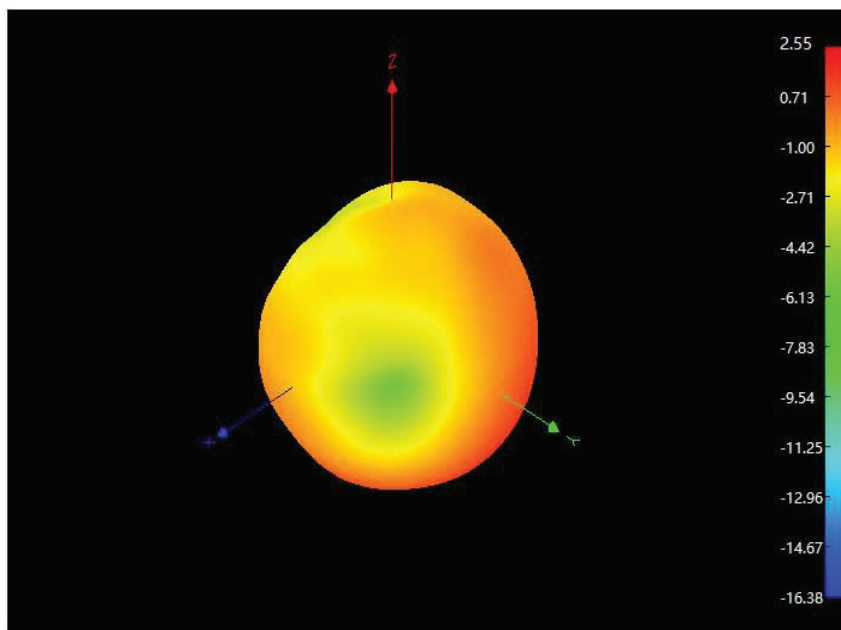
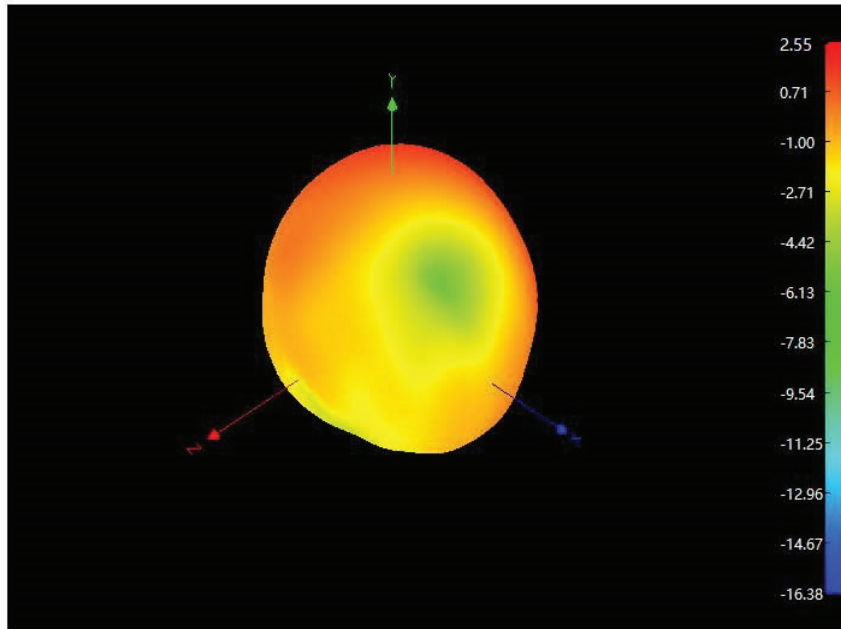
### 3: Antenna Radiation Pattern (1D and 3D)





Solution frequency at 2.44GHz

**Solution frequency at 2.44GHz**



**Solution frequency at 2.44GHz**

---

Frequency (MHz)	Efficiency(%)	Gain (dBi)
2400	52.29%	1.62
2410	52.17%	1.71
2420	53.14%	1.93
2430	54.16%	1.98
2440	57.62%	2.00
2450	59.64%	2.17
2460	61.55%	2.45
2470	60.64%	2.38
2480	62.86%	2.50
2490	59.85%	2.30
2500	60.41%	2.49