

# TEST REPORT

**Reference No.**..... : WTX24X08191416W  
**FCC ID**..... : 2BGU6-VEIDOO  
**Applicant**..... : Shenzhen Veidoo Digital Vision Co.,Ltd  
**Address**..... : 4th Floor Block 6, Saitu Technology Park, No. 137 Bulan Road, Jihua Street,  
Longgang District, Shenzhen, China  
**Manufacturer**..... The same as Applicant  
**Address**..... The same as Applicant  
**Product Name**..... : Tablet PC  
**Model No.**..... : VEIDOO T70 PLUS  
**Standards**..... : FCC Part 2.1093,  
IEEE Std C95.1: 2019  
IEEE Std C95.3: 2002 + Rev. 2008  
IEC/IEEE 62209-1528 Ed. 1.0 (2020-10)  
**Date of Receipt sample**..... : 2024-08-14  
**Date of Test**..... : 2024-09-25 to 2024-09-27  
**Date of Issue**..... : 2024-10-08  
**Test Report Form No.**..... : WTX\_Part2\_1093W  
**Test Result**..... : **Pass**

Remarks:

The results shown in this test report refer only to the sample(s) tested, this test report cannot be reproduced, except in full, without prior written permission of the company. The report would be invalid without specific stamp of test institute and the signatures of approver.

**Prepared By:**

**Waltek Testing Group (Shenzhen) Co., Ltd.**

Address: 1/F., Room 101, Building 1, Hongwei Industrial Park, Liuxian 2nd Road,  
Block 70 Bao'an District, Shenzhen, Guangdong, China  
Tel.: +86-755-33663308 Fax.: +86-755-33663309 Email: sem@waltek.com.cn

Tested by:



Jack Sun

Approved by:



Jason Su

**TABLE OF CONTENTS**

**1. General Information ..... 4**

    1.1 Product Description for Equipment Under Test (EUT) ..... 4

    1.2 Test Standards ..... 6

    1.3 Test Methodology ..... 6

    1.4 Test Facility ..... 6

**2. Summary of Test Results ..... 7**

**3. Specific Absorption Rate (SAR) ..... 8**

    3.1 Introduction ..... 8

    3.2 SAR Definition ..... 8

**4. SAR Measurement System ..... 9**

    4.1 The Measurement System ..... 9

    4.2 Probe ..... 9

    4.3 Probe Calibration Process ..... 11

    4.4 Phantom ..... 11

    4.5 Device Holder ..... 12

    4.6 Test Equipment List ..... 13

**5. Tissue Simulating Liquids ..... 14**

    5.1 Composition of Tissue Simulating Liquid ..... 14

    5.2 Tissue Dielectric Parameters for Head and Body Phantoms ..... 15

    5.3 Tissue Calibration Result ..... 16

**6. SAR Measurement Evaluation ..... 17**

    6.1 Purpose of System Performance Check ..... 17

    6.2 System Setup ..... 17

    6.3 Validation Results ..... 18

**7. EUT Testing Position ..... 19**

    7.1 Body Position ..... 19

    7.2 EUT Antenna Position ..... 19

    7.3 EUT Testing Position ..... 20

**8. SAR Measurement Procedures ..... 21**

    8.1 Measurement Procedures ..... 21

    8.2 Spatial Peak SAR Evaluation ..... 21

    8.3 Area & Zoom Scan Procedures ..... 22

    8.4 Volume Scan Procedures ..... 22

    8.5 SAR Averaged Methods ..... 22

    8.6 Power Drift Monitoring ..... 22

**9. SAR Test Result ..... 23**

    9.1 Conducted RF Output Power ..... 23

    9.2 Test Results for Standalone SAR Test ..... 26

    9.3 Simultaneous Multi-band Transmission SAR Analysis ..... 27

**10. Measurement Uncertainty ..... 29**

    10.1 Uncertainty for SAR Test ..... 29

**Annex A. Plots of System Performance Check ..... 31**

**Annex B. Plots of SAR Measurement ..... 35**

**Annex C. EUT Photos ..... 39**

**Annex D. Test Setup Photos ..... 41**

**Annex E. Calibration Certificate ..... 42**

**Report version**

Version No.	Date of issue	Description
Rev.00	2024-10-08	Original
/	/	/

## 1. General Information

---

### 1.1 Product Description for Equipment Under Test (EUT)

General Description of EUT	
Product Name:	Tablet PC
Trade Name:	/
Model No.:	VEIDOO T70 PLUS
Adding Model(s):	VEIDOO T40, T60 PLUS, VEIDOO T70, T50, T30 PLUS, T40 PLUS, VEIDOO T60 PLUS, VEIDOO T80, T80 PLUS, T60
Rated Voltage:	DC3.7V
Battery Capacity:	5000mAh
Power Adapter Model:	CT-050200UA Input:AC100-240V 50/60Hz 0.3A Output:DC5V2.0A
<p><i>Note: The test data is gathered from a production sample provided by the manufacturer. The appearance of others models listed in the report is different from main-test model VEIDOO T70 PLUS, but the circuit and the electronic construction do not change, declared by the manufacturer.</i></p>	

<b>Technical Characteristics of EUT:</b>	
<b>WIFI(2.4GHz)</b>	
Support Standards:	802.11b, 802.11g, 802.11n-HT20/HT40; 802.11ax-HE20/40
Frequency Range:	2412-2462MHz for 802.11b/g/n(HT20)/ax-HE20, 2422-2452MHz for 802.11n(HT40)/ax-HE40
Max. RF Output Power:	15.84dBm (Conducted)
Type of Modulation:	CCK, OFDM, QPSK, BPSK, 16QAM, 64QAM, 256QAM, 1024QAM
Quantity of Channels:	11 for 802.11b/g/n/ax-HT/HE20,7 for 802.11b/g/n/ax-HT/HE40
Channel Separation:	5MHz
Antenna Type:	PIFA Antenna
Antenna Gain:	2.63dBi
<b>Bluetooth</b>	
Bluetooth Version:	V5.4
Frequency Range:	2402-2480MHz
RF Output Power:	-3.54dBm (Conducted)
Modulation:	GFSK, $\pi/4$ DQPSK, 8DPSK
Quantity of Channels:	79/40
Channel Separation:	1MHz/2MHz
Antenna Type:	PIFA Antenna
Antenna Gain:	2.63dBi
<b>Wi-Fi(5GHz)</b>	
Support Standards:	802.11a, 802.11n-HT20/40, 802.11ac-VHT20/40, 802.11ax-HE20/40
Frequency Range:	5745-5825MHz
Max. RF Output Power:	14.97dBm (Conducted)
Type of Modulation:	QPSK, 16QAM, 64QAM, 256QAM, 1024QAM
Type of Antenna:	PIFA Antenna
Antenna Gain:	0.6dBi
<i>Note: The Antenna Gain is provided by the customer and can affect the validity of results.</i>	

## 1.2 Test Standards

The following report is accordance with FCC 47 CFR Part 2.1093, IEEE Std C95.1: 2019, IEEE Std C95.3: 2002 + Rev. 2008, IEC/IEEE 62209-1528 Ed. 1.0 (2020-10), and KDB 865664 D01 v01r04 and KDB 865664 D02 v01r02 and KDB 616217 D04 v01r02 and 248227 D01 802 11 Wi-Fi SAR v02r02.

The objective is to determine compliance with FCC Part 2.1093 of the Federal Communication Commissions rules.

**Maintenance of compliance** is the responsibility of the manufacturer. Any modification of the product, which is result in lowering the emission, should be checked to ensure compliance has been maintained.

## 1.3 Test Methodology

All measurements contained in this report were conducted with KDB 865664 D01 v01r04 and KDB 865664 D02 v01r02. The public notice KDB 447498 D01 v06 for Mobile and Portable Devices RF Exposure Procedure also.

## 1.4 Test Facility

Address of the test laboratory

Laboratory: Waltek Testing Group (Shenzhen) Co., Ltd.

Address: 1/F., Room 101, Building 1, Hongwei Industrial Park, Liuxian 2nd Road, Block 70 Bao'an District, Shenzhen, Guangdong, China

### **FCC – Registration No.: 125990**

Waltek Testing Group (Shenzhen) Co., Ltd. EMC Laboratory has been registered and fully described in a report filed with the FCC (Federal Communications Commission). The acceptance letter from the FCC is maintained in our files. The Designation Number is CN5010. Test Firm Registration Number is 125990.

### **Industry Canada (IC) Registration No.: 11464A**

The 3m Semi-anechoic chamber of Waltek Testing Group (Shenzhen) Co., Ltd. has been registered by Certification and Engineering Bureau of Industry Canada for radio equipment testing with Registration No.: 11464 A and the CAB identifier is CN0057.

## 2. Summary of Test Results

---

The maximum results of Specific Absorption Rate (SAR) have found during testing are as follows:

Frequency Band	Body (0mm Gap)	SAR <sub>1g</sub> Limit (W/kg)
	Maximum SAR <sub>1g</sub> (W/kg)	
WLAN 2.4GHz	0.227	1.6
WLAN 5GHz	<b>0.556</b>	1.6
Simultaneous Transmission	<b>0.577</b>	1.6

The device is in compliance with Specific Absorption Rate (SAR) for general population/uncontrolled exposure limits (1.6 W/kg) specified in FCC 47 CFR Part 2.1093 and IEEE Std C95.1: 2019, and had been tested in accordance with the measurement methods and procedure specified in KDB 865664 D01 v01r04, KDB 865664 D02 v01r02 and IEC 62209-2:2010+AMD1 (2019).

### 3. Specific Absorption Rate (SAR)

---

#### 3.1 Introduction

SAR is related to the rate at which energy is absorbed per unit mass in an object exposed to a radio field. The SAR distribution in a biological body is complicated and is usually carried out by experimental techniques or numerical modeling. The standard recommends limits for two tiers of groups, occupational/controlled and general population/uncontrolled, based on a person's awareness and ability to exercise control over his or her exposure. In general, occupational/controlled exposure limits are higher than the limits for general population/uncontrolled.

#### 3.2 SAR Definition

The SAR definition is the time derivative (rate) of the incremental energy (dW) absorbed by (dissipated in) an incremental mass (dm) contained in a volume element (dv) of a given density ( $\rho$ ). The equation description is as below:

$$SAR = \frac{d}{dt} \left( \frac{dW}{dm} \right) = \frac{d}{dt} \left( \frac{dW}{\rho dv} \right)$$

SAR is expressed in units of Watts per kilogram (W/kg)

SAR measurement can be either related to the temperature elevation in tissue by

$$SAR = C \left( \frac{\delta T}{\delta t} \right)$$

Where: C is the specific heat capacity,  $\delta T$  is the temperature rise and  $\delta t$  is the exposure duration, or related to the electrical field in the tissue by

$$SAR = \frac{\sigma |E|^2}{\rho}$$

Where:  $\sigma$  is the conductivity of the tissue,  $\rho$  is the mass density of the tissue and E is the RMS electrical field strength.

However for evaluating SAR of low power transmitter, electrical field measurement is typically applied.



## 4. SAR Measurement System

---

### 4.1 The Measurement System

Comosar is a system that is able to determine the SAR distribution inside a phantom of human being according to different standards. The Comosar system consists of the following items:

- Main computer to control all the system
- 6 axis robot
- Data acquisition system
- Miniature E-field probe
- Phone holder
- Head simulating tissue

The following figure shows the system.

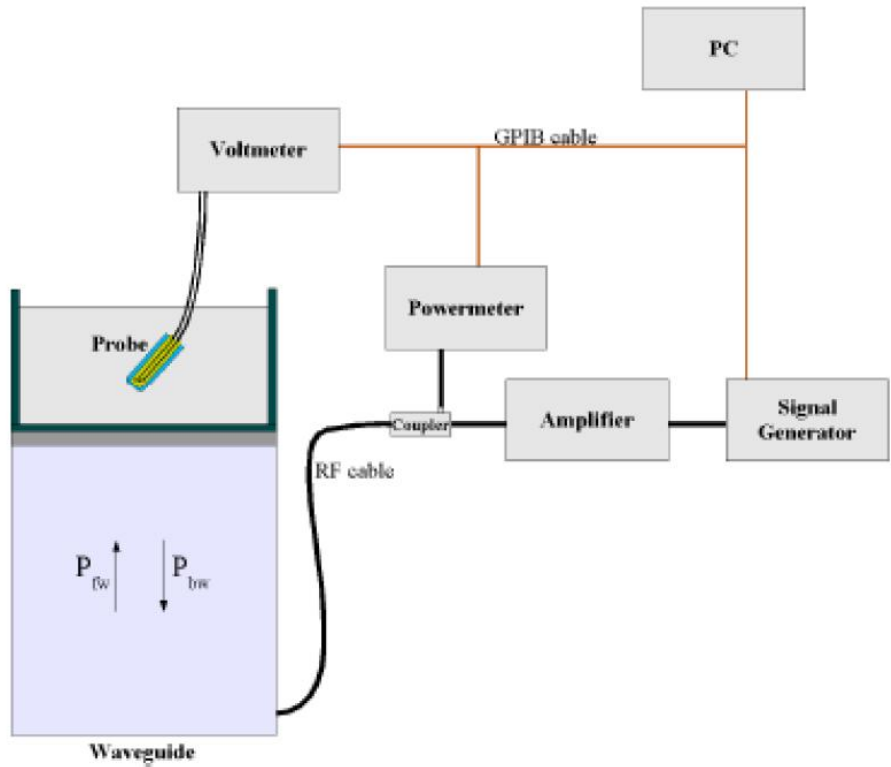


The EUT under test operating at the maximum power level is placed in the phone holder, under the phantom, which is filled with head simulating liquid. The E-Field probe measures the electric field inside the phantom. The OpenSAR software computes the results to give a SAR value in a 1g or 10g mass.

### 4.2 Probe

For the measurements the Specific Dosimetric E-Field Probe SSE2 3823-EPGO-435, and refer to the calibration report for probe parameters.

Probe calibration is realized, in compliance with EN 62209-1 and IEC/IEEE 62209-1528 Ed. 1.0 (2020-10) STD, with CALISAR, Antenna proprietary calibration system. The calibration is performed with the EN 62209-1 annexes technique using reference guide at the five frequencies.



$$SAR = \frac{4(P_{fw} - P_{bw})}{ab\delta} \cos^2\left(\pi \frac{y}{a}\right) e^{-2z/\delta}$$

Where :

$P_{fw}$  = Forward Power

$P_{bw}$  = Backward Power

a and b =Waveguide dimensions

$\delta$  = Skin depth

Keithley configuration:

Rate = Medium; Filter = ON; RDGS = 10; Filter type = Moving Average; Range auto after each calibration, a SAR measurement is performed on a validation dipole and compared with a NPL calibrated probe, to verify it.

The calibration factors,  $CF(N)$ , for the 3 sensors corresponding to dipole 1, dipole 2 and dipole 3 are:

$$CF(N) = SAR(N) / V_{lin}(N) \quad (N=1,2,3)$$

The linearised output voltage  $V_{lin}(N)$  is obtained from the displayed output voltage  $V(N)$  using

$$V_{lin}(N) = V(N) * (1 + V(N) / DCP(N)) \quad (N=1,2,3)$$

where DCP is the diode compression point in mV.

Waltek Testing Group (Shenzhen) Co., Ltd.

[Http://www.waltek.com.cn](http://www.waltek.com.cn)

### 4.3 Probe Calibration Process

#### Dosimetric Assessment Procedure

Each E-Probe/Probe Amplifier combination has unique calibration parameters. SATIMO Probe calibration procedure is conducted to determine the proper amplifier settings to enter in the probe parameters. The amplifier settings are determined for a given frequency by subjecting the probe to a known E-field density (1 mW/cm<sup>2</sup>) using an with CALISAR, Antenna proprietary calibration system.

#### Free Space Assessment Procedure

The free space E-field from amplified probe outputs is determined in a test chamber. This calibration can be performed in a TEM cell if the frequency is below 1 GHz and in a waveguide or other methodologies above 1 GHz for free space. For the free space calibration, the probe is placed in the volumetric center of the cavity and at the proper orientation with the field. The probe is rotated 360 degrees until the three channels show the maximum reading. The power density readings equates to 1mW/cm<sup>2</sup>.

#### Temperature Assessment Procedure

E-field temperature correlation calibration is performed in a flat phantom filled with the appropriate simulated head tissue. The E-field in the medium correlates with the temperature rise in the dielectric medium. For temperature correlation calibration a RF transparent thermistor-based temperature probe is used in conjunction with the E-field probe.

$$SAR = C \frac{\Delta T}{\Delta t}$$

Where:

$\Delta t$  = exposure time (30 seconds),

C = heat capacity of tissue (brain or muscle),

$\Delta T$  = temperature increase due to RF exposure.

SAR is proportional to  $\Delta T/\Delta t$ , the initial rate of tissue heating, before thermal diffusion takes place. The electric field in the simulated tissue can be used to estimate SAR by equating the thermally derived SAR to that with the E- field component.

$$SAR = \frac{|E|^2 \cdot \sigma}{\rho}$$

Where:

$\sigma$  = simulated tissue conductivity,

$\rho$  = Tissue density (1.25 g/cm<sup>3</sup> for brain tissue)

### 4.4 Phantom

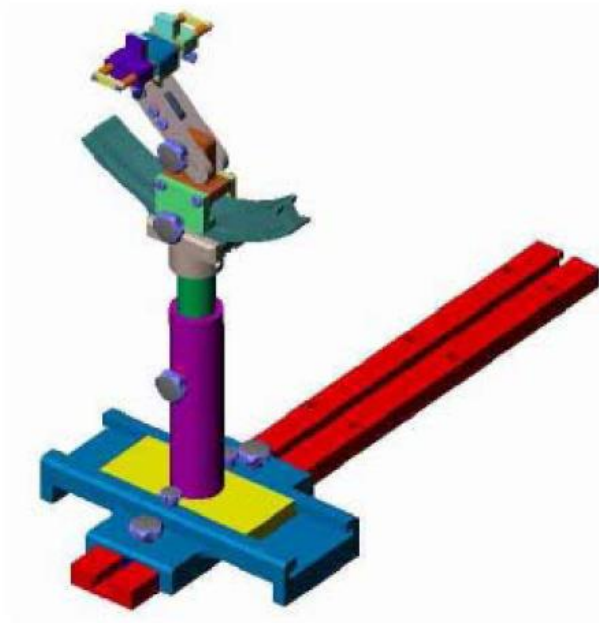
For the measurements the Specific Anthropomorphic Mannequin (SAM) defined by the IEEE SCC-34/SC2 group is used. The phantom is a polyurethane shell integrated in a wooden table. The thickness of the phantom amounts to 2mm +/- 0.2mm. It enables the dosimetric evaluation of left and right phone usage and includes an additional flat phantom part for the simplified performance check. The phantom set-up includes a

Reference No.: WTX24X08191416W

cover, which prevents the evaporation of the liquid.

#### 4.5 Device Holder

The positioning system allows obtaining cheek and tilting position with a very good accuracy. In compliance with CENELEC, the tilt angle uncertainty is lower than 1°.



System Material	Permittivity	Loss Tangent
Delrin	3.7	0.005

**4.6 Test Equipment List**

Fixed asset Number	Description	Manufacturer	Model	Serial Number	Cal. Date	Due. Date
WTXE1105A1002	E-Field Probe	MVG	SSE2	3823-EPGO-435	2024-07-11	2025-07-10
WTXE1053A1001-007	2450MHz Dipole	MVG	SID2450	SN 13/15 DIP 2G450-364	2023-08-20	2026-08-19
WTXE1035A1009	5 GHz Dipole	MVG	SID5000	SN 02/21 DIP 5G000-543	2024-07-11	2027-07-10
WTXE1053A1001-010	Dielectric Probe	SATIMO	SCLMP	SN 47/12 OCPG49	2024-02-24	2025-02-23
WTXE1075A1003	Power meter	Keithley	3500	1232959	2024-02-24	2025-02-23
WTXE1075A1002	Power meter	Keithley	3500	1162591	2024-02-24	2025-02-23
WTXE1104A1003	EXG Analog Signal Generator	KEYSIGHT	N5173B	MY61252892	2024-02-24	2025-02-23
WTXE1022A1002	GSM Tester	Rohde & Schwarz	CMU200	114403	2024-02-27	2025-02-26
WTXE1041A1002	Communications Tester	Rohde & Schwarz	CMW500	148650	2024-03-19	2025-03-18
WTXE1036A1001	Network Analyzer	Rohde & Schwarz	ZVB 8	101353	2023-10-17	2024-10-16

## 5. Tissue Simulating Liquids

### 5.1 Composition of Tissue Simulating Liquid

For the measurement of the field distribution inside the SAM phantom with SMTIMO, the phantom must be filled with around 25 liters of homogeneous body tissue simulating liquid. For head SAR testing, the liquid height from the ear reference point (ERP) of the phantom to the liquid top surface is larger than 15 cm. For body SAR testing, the liquid height from the center of the flat phantom to the liquid top surface is larger than 15 cm. Please see the following photos for the liquid height.



Liquid Height for Body SAR

#### The Composition of Tissue Simulating Liquid

Frequency (MHz)	Water (%)	Salt (%)	1,2-Propane diol (%)	HEC (%)	Preventol (%)	DGBE (%)
<b>Head</b>						
2450	55.0	0.1	0	0	0	44.9
2600	54.9	0.1	0	0	0	45.0

Frequency (MHz)	Water (%)	Hexyl Carbitol (%)	Triton X-100 (%)
<b>Head</b>			
5000-6000	65.52	17.24	17.24

## 5.2 Tissue Dielectric Parameters for Head and Body Phantoms

According to FCC KDBs, IEC/IEEE 62209-1528 Ed. 1.0 (2020-10) and CEI/IEC 62209 standards state that the system validation measurements must be performed using a reference dipole meeting the fore mentioned return loss and mechanical dimension requirements. The validation measurement must be performed against a liquid filled flat phantom, with the phantom constructed as outlined in the fore mentioned standards. Per the standards, the dipole shall be positioned below the bottom of the phantom, with the dipole length centered and parallel to the longest dimension of the flat phantom, with the top surface of the dipole at the described distance from the bottom surface of the phantom.

Target Frequency (MHz)	Head	
	Conductivity ( $\sigma$ )	Permittivity ( $\epsilon_r$ )
150	0.76	52.3
300	0.87	45.3
450	0.87	43.5
750	0.89	41.9
835	0.90	41.5
900	0.97	41.5
915	0.98	41.5
1450	1.20	40.5
1800-2000	1.40	40.0
2100	1.49	39.8
2300	1.67	39.5
<b>2450</b>	<b>1.80</b>	<b>39.2</b>
2600	1.96	39.0
3000	2.40	38.5
3500	2.91	37.9
4000	3.43	37.4
4500	3.94	36.8
5000	4.45	36.2
5200	4.66	36.0
5400	4.86	35.8
5600	5.07	35.5
<b>5800</b>	<b>5.27</b>	<b>35.3</b>
6000	5.48	35.1

### 5.3 Tissue Calibration Result

The dielectric parameters of the liquids were verified prior to the SAR evaluation using COMOSAR Dielectric Probe Kit and an Agilent Network Analyzer.

#### Calibration Result for Dielectric Parameters of Tissue Simulating Liquid

Head Tissue Simulating Liquid									
Freq. MHz	Temp. (°C)	Conductivity			Permittivity			Limit (%)	Date
		Reading ( $\sigma$ )	Target ( $\sigma$ )	Delta (%)	Reading ( $\epsilon_r$ )	Target ( $\epsilon_r$ )	Delta (%)		
2450	23.0	1.83	1.80	1.67	40.15	39.2	2.42	±5	2024-09-25
5800	23.0	5.30	5.27	0.57	34.76	35.3	-1.53	±5	2024-09-26



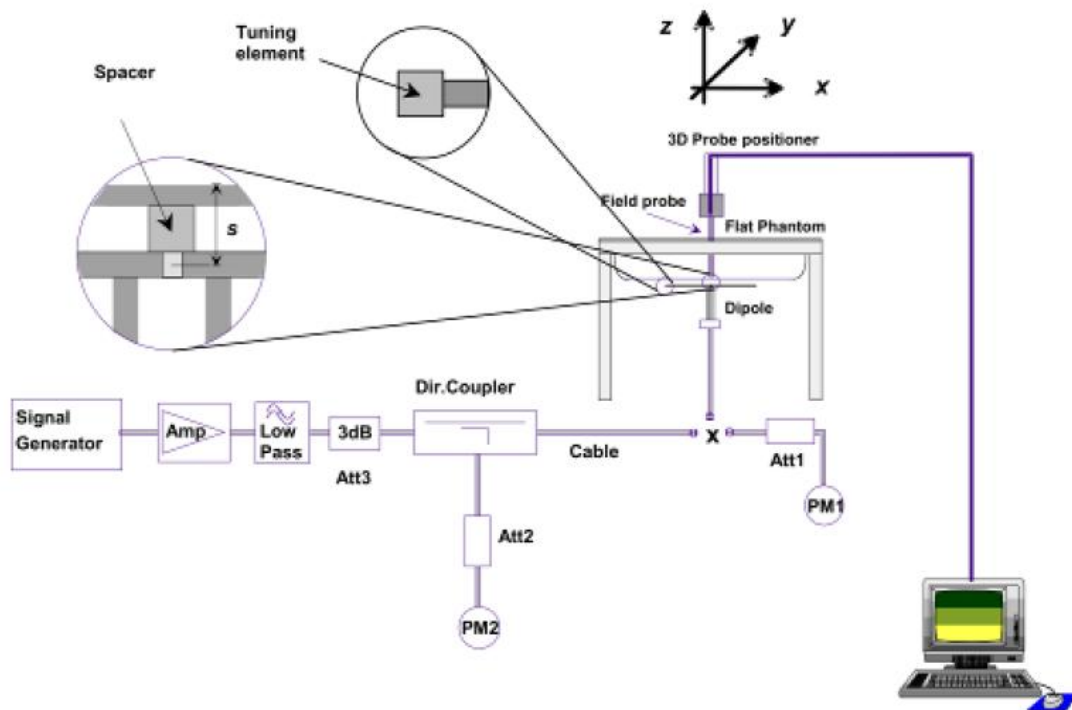
## 6. SAR Measurement Evaluation

### 6.1 Purpose of System Performance Check

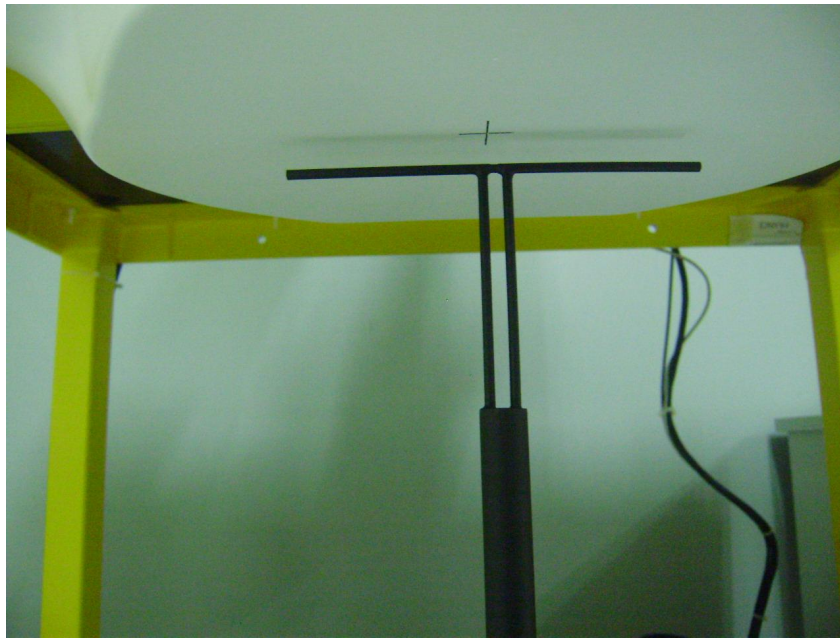
The system performance check verifies that the system operates within its specifications. System and operator errors can be detected and corrected. It is recommended that the system performance check be performed prior to any usage of the system in order to guarantee reproducible results. The system performance check uses normal SAR measurements in a simplified setup with a well characterized source. This setup was selected to give a high sensitivity to all parameters that might fail or vary over time. The system check does not intend to replace the calibration of the components, but indicates situations where the system uncertainty is exceeded due to drift or failure.

### 6.2 System Setup

In the simplified setup for system evaluation, the EUT is replaced by a calibrated dipole and the power source is replaced by a continuous wave which comes from a signal generator at frequency 2450MHz and 5000MHz. The calibrated dipole must be placed beneath the flat phantom section of the SAM twin phantom with the correct distance holder. The distance holder should touch the phantom surface with a light pressure at the reference marking and be oriented parallel to the long side of the phantom.



System Verification Setup Block Diagram



**Setup Photo of Dipole Antenna**

The output power on dipole port must be calibrated to 24 dBm(250 mW) before dipole is connected.

### 6.3 Validation Results

Comparing to the original SAR value provided by SATIMO, the validation data should be within its specification of 10 %. Table 6.1 shows the target SAR and measured SAR after normalized to 1W input power. The table below indicates the system performance check can meet the variation criterion.

Frequency	Power	Targeted SAR <sub>1g</sub>	Measured SAR <sub>1g</sub>	Normalized SAR <sub>1g</sub>	Tolerance	Date
MHz	(mw)	(W/kg)	(W/kg)	(W/kg)	(%)	
Head						
2450	250	53.76	13.747	54.988	2.28	2024-09-25
5800	250	78.05	18.087	72.348	-7.31	2024-09-26

Targeted and Measurement SAR

***Please refer to Annex A for the plots of system performance check.***

## 7. EUT Testing Position

### 7.1 Body Position

- (a) To position the device parallel to the phantom surface with each side.
- (b) To adjust the device parallel to the flat phantom.
- (c) To adjust the distance between the device surface and the flat phantom to 0mm.

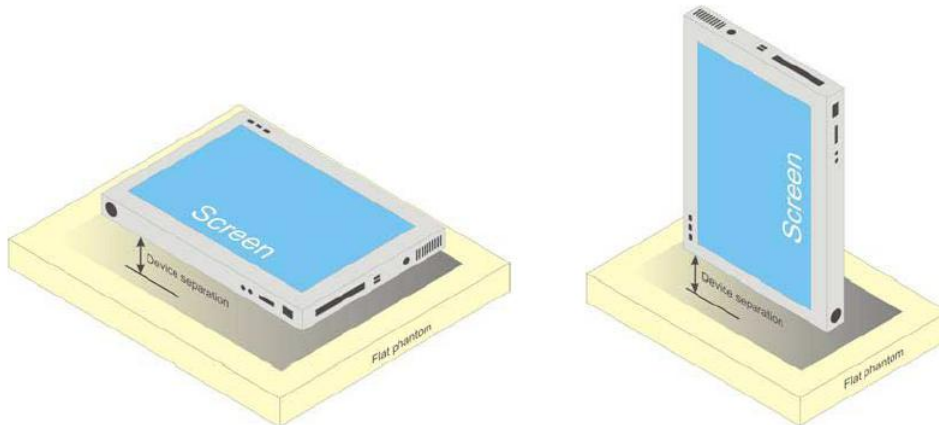


Illustration for Body Position

### 7.2 EUT Antenna Position

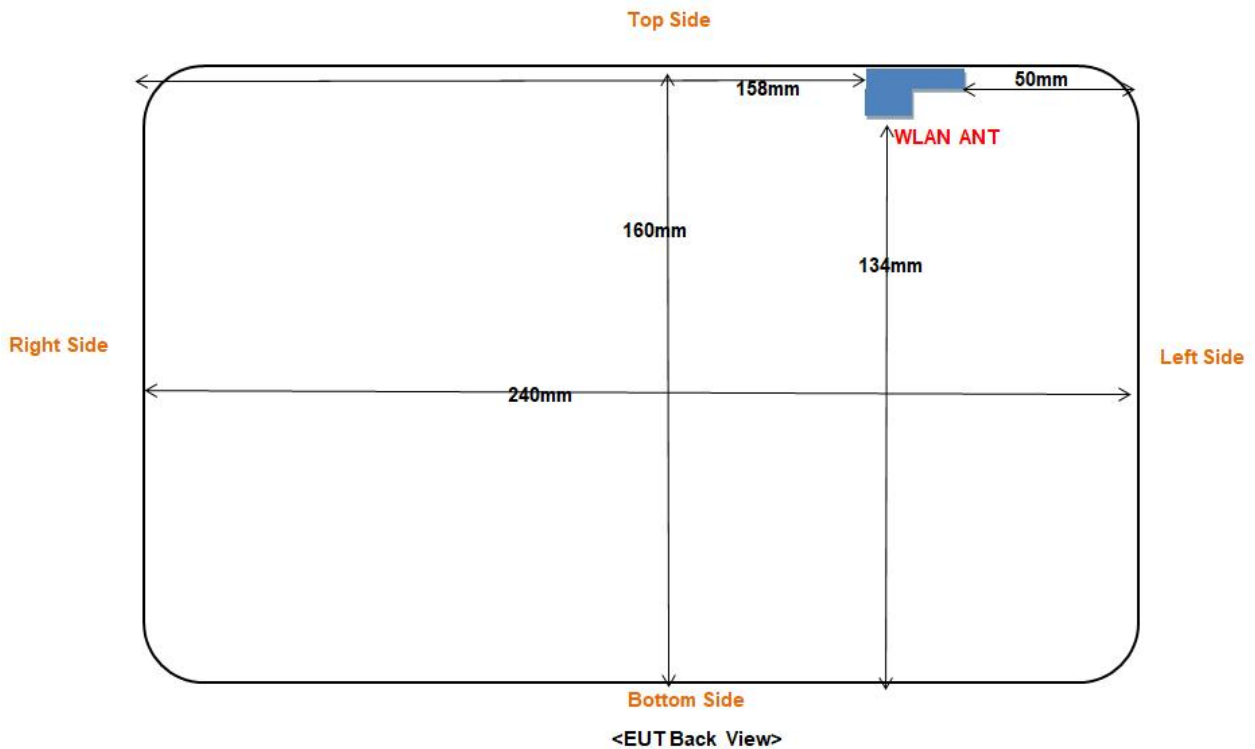


Fig 7.1 Block Diagram for EUT Antenna Position

Distance of EUT antenna-to-edge/surface(mm),						
Antennas	Front	Back	Right Side	Left Side	Top Side	Bottom Side
WLAN	<25	<25	158	50	<25	134

### 7.3 EUT Testing Position

Body mode SAR assessments are required for this device. This EUT was tested in different positions for different SAR test modes, more information as below:

Body SAR tests, Test distance: 0mm						
Antennas	Front	Back	Right Side	Left Side	Top Side	Bottom
WLAN	/	Yes	Yes	Yes	Yes	No

**Remark:**

- Referring to KDB 616217 D04 v01r02, KDB 248227 D01 v02r02 and KDB 447498 D01 v06, this device is overall diagonal dimension(>20cm) tablet, tested in direct contact (no gap) with flat phantom.
- Referring to KDB 616217 D04 v01r02, Exposures from antennas through the front (top) surface of the display section of a full-size tablet, away from the edges, are generally limited to the user's hands. Exposures to hands for typical consumer transmitters used in tablets are not expected to exceed the extremity SAR limit; therefore, SAR evaluation for the front surface of tablet display screens are generally not necessary.

***Please refer to Annex D for the EUT test setup photos.***

## 8. SAR Measurement Procedures

---

### 8.1 Measurement Procedures

The measurement procedures are as follows:

- (a) Use base station simulator (if applicable) or engineering software to transmit RF power continuously (continuous Tx) in the highest power channel.
- (b) Keep EUT to radiate maximum output power or 100% factor (if applicable)
- (c) Measure output power through RF cable and power meter.
- (d) Place the EUT in the positions as Annex D demonstrates.
- (e) Set scan area, grid size and other setting on the SATIMO software.
- (f) Measure SAR results for the highest power channel on each testing position.
- (g) Find out the largest SAR result on these testing positions of each band
- (h) Measure SAR results for other channels in worst SAR testing position if the SAR of highest power channel is larger than 0.8 W/kg

According to the test standard, the recommended procedure for assessing the peak spatial-average SAR value consists of the following steps:

- (a) Power reference measurement
- (b) Area scan
- (c) Zoom scan
- (d) Power drift measurement

### 8.2 Spatial Peak SAR Evaluation

The procedure for spatial peak SAR evaluation has been implemented according to the test standard. It can be conducted for 1g and 10g, as well as for user-specific masses. The SATIMO software includes all numerical procedures necessary to evaluate the spatial peak SAR value.

The base for the evaluation is a "cube" measurement. The measured volume must include the 1g and 10g cubes with the highest averaged SAR values. For that purpose, the center of the measured volume is aligned to the interpolated peak SAR value of a previously performed area scan.

The entire evaluation of the spatial peak values is performed within the post-processing engine. The system always gives the maximum values for the 1g and 10g cubes. The algorithm to find the cube with highest averaged SAR is divided into the following stages:

- (a) Extraction of the measured data (grid and values) from the Zoom Scan
- (b) Calculation of the SAR value at every measurement point based on all stored data
- (c) Generation of a high-resolution mesh within the measured volume
- (d) Interpolation of all measured values from the measurement grid to the high-resolution grid
- (e) Extrapolation of the entire 3D field distribution to the phantom surface over the distance from sensor to surface
- (f) Calculation of the averaged SAR within masses of 1g and 10g

### **8.3 Area & Zoom Scan Procedures**

First Area Scan is used to locate the approximate location(s) of the local peak SAR value(s). The measurement grid within an Area Scan is defined by the grid extent, grid step size and grid offset. Next, in order to determine the EM field distribution in a three-dimensional spatial extension, Zoom Scan is required. The Zoom Scan measures 5x5x7 points with step size 8, 8 and 5 mm for 300 MHz to 3 GHz, and 8x8x8 points with step size 4, 4 and 2.5 mm for 3 GHz to 6 GHz. The Zoom Scan is performed around the highest E-field value to determine the averaged SAR-distribution over 10 g.

### **8.4 Volume Scan Procedures**

The volume scan is used for assess overlapping SAR distributions for antennas transmitting in different frequency bands. It is equivalent to an oversized zoom scan used in standalone measurements. The measurement volume will be used to enclose all the simultaneous transmitting antennas. For antennas transmitting simultaneously in different frequency bands, the volume scan is measured separately in each frequency band. In order to sum correctly to compute the 1g aggregate SAR, the EUT remain in the same test position for all measurements and all volume scan use the same spatial resolution and grid spacing (step-size is 4, 4 and 2.5 mm). When all volume scan were completed, the software can combine and subsequently superpose these measurement data to calculating the multiband SAR.

### **8.5 SAR Averaged Methods**

The local SAR inside the phantom is measured using small dipole sensing elements inside a probe body. The probe tip must not be in contact with the phantom surface in order to minimize measurements errors, but the highest local SAR will occur at the surface of the phantom.

An extrapolation is using to determinate this highest local SAR values. The extrapolation is based on a fourth-order least-square polynomial fit of measured data. The local SAR value is then extrapolated from the liquid surface with a 1mm step.

The measurements have to be performed over a limited time (due to the duration of the battery) so the step of measurement is high. It could vary between 5 and 8 mm. To obtain an accurate assessment of the maximum SAR averaged over 10g and 1 g requires a very fine resolution in the three dimensional scanned data array.

### **8.6 Power Drift Monitoring**

All SAR testing is under the EUT install full charged battery and transmit maximum output power. In SATIMO measurement software, the power reference measurement and power drift measurement procedures are used for monitoring the power drift of EUT during SAR test. Both these procedures measure the field at a specified reference position before and after the SAR testing. The software will calculate the field difference in dB. If the power drift more than 5%, the SAR will be retested.

## 9. SAR Test Result

---

### 9.1 Conducted RF Output Power

WLAN(2.4GHz)					
Test Mode	Data Rate	Channel	Frequency (MHz)	Conducted Power (dBm)	Tune-up power (dBm)
802.11b	11Mbps	CH 01	2412	15.44	16.0
		CH 06	2437	15.26	16.0
		CH 11	2462	<b>15.84</b>	16.0
802.11g	54Mbps	CH 01	2412	14.10	15.0
		CH 06	2437	14.68	15.0
		CH 11	2462	14.87	15.0
802.11n-HT20	MCS7	CH 01	2412	13.07	14.0
		CH 06	2437	13.38	14.0
		CH 11	2462	13.62	14.0
802.11n-HT40	MCS7	CH 03	2422	12.46	14.0
		CH 07	2442	13.27	14.0
		CH 09	2452	13.29	14.0
802.11ax-HE20	MCS7	CH 01	2412	13.05	14.0
		CH 06	2437	13.04	14.0
		CH 11	2462	13.07	14.0
802.11ax-HE40	MCS7	CH 03	2422	12.05	14.0
		CH 07	2442	12.03	14.0
		CH 09	2452	12.11	14.0

WLAN(5.8GHz)				
Test Mode	Channel	Frequency (MHz)	Conducted Power (dBm)	Tune-up power (dBm)
802.11a	149	5745	14.11	15.0
	157	5785	14.77	15.0
	165	5825	<b>14.97</b>	15.0
802.11n-HT20	149	5745	13.04	14.0
	157	5785	13.68	14.0
	165	5825	13.95	14.0
802.11n-HT40	151	5755	12.07	13.0
	159	5795	12.74	13.0
802.11ac-VHT20	149	5745	13.01	14.0
	157	5785	13.63	14.0
	165	5825	13.88	14.0
802.11ac-VHT40	151	5755	12.05	13.0
	159	5795	12.84	13.0
802.11ax-HE20	149	5745	13.39	14.0
	157	5785	13.53	14.0
	165	5825	13.19	14.0
802.11ax-HE40	151	5755	12.32	13.0
	159	5795	12.49	13.0

**Remark:**

1. Per KDB 248227 D01 v02r02, for 802.11b DSSS SAR measurements, DSSS SAR procedure applies to fixed exposure test position and initial test position procedure applies to multiple exposure test positions.
2. Per KDB 248227 D01 v02r02, For 802.11b DSSS SAR measurements ,when the reported SAR of the highest measured maximum output power channel (see 3.1) for the exposure configuration is  $\leq 0.8$  W/kg, no further SAR testing is required for 802.11b DSSS in that exposure configuration. When the reported SAR is  $> 0.8$  W/kg, SAR is required for that exposure configuration using the next highest measured output power channel. When any reported SAR is  $> 1.2$  W/kg, SAR is required for the third channel; i.e., all channels require testing.
- 3 .For OFDM modes (802.11g/n), SAR is not required when the highest reported SAR for DSSS is adjusted by the ratio of OFDM to DSSS specified maximum output power and it is  $\leq 1.2$ W/kg.



Bluetooth			
Test Mode	Data Rate	Conducted Power (dBm)	Tune-up power (dBm)
GFSK	1Mbps	<b>-3.54</b>	-3.0
$\pi/4$ DQPSK	2Mbps	-3.84	-3.0
8DPSK	3Mbps	-3.90	-3.0

Bluetooth - Maximum Average Power					
Test Mode	Data Rate	Channel	Frequency (MHz)	Conducted Power (dBm)	Tune-up power (dBm)
BLE	1Mbps	CH 00	2402	-4.03	-3.0
		CH 19	2440	-4.60	-3.0
		CH 39	2480	-4.65	-3.0
	2Mbps	CH 00	2402	<b>-3.87</b>	-3.0
		CH 19	2440	-4.45	-3.0
		CH 39	2480	-4.42	-3.0

**Remark:**

Bluetooth maximum output power is -3.54dBm and Maximum Tune-Up output power is -3.0dBm,. Per KDB 447498 D01 V06, the 1-g and 10-g SAR test exclusion thresholds for 100 MHz to 6 GHz at test separation distances  $\leq 50$  mm are determined by:

$$[(\text{max. power of channel, including tune-up tolerance, mW}) / (\text{min. test separation distance, mm})] \cdot [\sqrt{f(\text{GHz})}] \leq$$

3.0 for 1-g SAR and  $\leq 7.5$  for 10-g extremity SAR,16 where

- f(GHz) is the RF channel transmit frequency in GHz

- Power and distance are rounded to the nearest mW and mm before calculation<sup>17</sup>

- The result is rounded to one decimal place for comparison

Bluetooth:

Tune-Up Power (dBm)	Max. Power (mW)	Distance (mm)	Frequency (GHz)	Result	Limit
-3.0	0.501	5	2.48	0.157	3

The exclusion thresholds is  $0.157 < 3$ , therefore, the RF exposure evaluation is not required.

## 9.2 Test Results for Standalone SAR Test

### Body SAR

WLAN 2.4GHz –Body SAR Test(0mm)									
Plot No.	Mode	Test Position	Frequency		Output Power (dBm)	Rated Limit (dBm)	Scaling Factor	SAR1g (W/kg)	Scaled SAR1g (W/kg)
			CH.	MHz					
1.	802.11b	Back side	CH 11	2462	15.84	16.0	1.038	0.219	<b>0.227</b>
	802.11b	Top side	CH 11	2462	15.84	16.0	1.038	0.091	0.094

WLAN 5.8GHz –Body SAR Test(0mm)									
Plot No.	Mode	Test Position	Frequency		Output Power (dBm)	Rated Limit (dBm)	Scaling Factor	SAR1g (W/kg)	Scaled SAR1g (W/kg)
			CH.	MHz					
2.	802.11a	Back side	165	5825	14.97	15.0	1.007	0.552	<b>0.556</b>
	802.11a	Top side	165	5825	14.97	15.0	1.007	0.308	0.310

#### Remark:

- 1) Repeated measurement is not required when the original highest measured SAR is < 0.80 W/kg; steps 2) through 4) do not apply.
- 2) When the original highest measured SAR is  $\geq 0.80$  W/kg, repeat that measurement once.
- 3) Perform a second repeated measurement only if the ratio of largest to smallest SAR for the original and first repeated measurements is > 1.20 or when the original or repeated measurement is  $\geq 1.45$  W/kg (~ 10% from the 1-g SAR limit).
- 4) Perform a third repeated measurement only if the original, first or second repeated measurement is  $\geq 1.5$  W/kg and the ratio of largest to smallest SAR for the original, first and second repeated measurements is > 1.20.

### 9.3 Simultaneous Multi-band Transmission SAR Analysis

#### List of Mode for Simultaneous Multi-band Transmission

No.	Configurations	Body SAR
1	WLAN(2.4GHz)(Data) + Bluetooth(Data)	Yes
2	WLAN(5GHz)(Data) + Bluetooth(Data)	Yes

#### Remark:

1. WLAN and Bluetooth can transmit simultaneously.
2. According to the KDB 447498 D01 v06, when standalone SAR test exclusion applies to an antenna that transmits simultaneously with other antennas, the standalone SAR must be estimated according to following to determine simultaneous transmission SAR test exclusion:

(max. power of channel, including tune-up tolerance, mW)/(min. test separation distance, mm) $^{1/x}$  [√f(GHz)/x]  
W/kg for test separation distances ≤ 50 mm;

where x = 7.5 for 1-g SAR, and x = 18.75 for 10-g SAR.

For simultaneous transmission analysis, Bluetooth SAR is estimated per KDB 447498 D01 v06 as below:

#### Bluetooth:

Tune-Up Power (dBm)	Max. Power (mW)	Distance (mm)	Frequency (GHz)	X	SAR(1g) 5mm
-3.0	0.501	5/10	2.480	7.5	0.021

3. The maximum SAR summation is calculated based on the same configuration and test position.

**Body SAR**

	<b>WLAN(2.4GHz)</b>	<b>Bluetooth</b>	<b>Summed SAR (W/kg)</b>
<b>Position</b>	<b>Scaled SAR (W/kg)</b>	<b>Scaled SAR (W/kg)</b>	
Back	<b>0.227</b>	0.021	<b>0.248</b>
Front	--	0.021	0.021
Right side	--	0.021	0.021
Left side	--	0.021	0.021
Top side	0.094	0.021	0.115
Bottom side	--	0.021	0.021

	<b>WLAN(5GHz)</b>	<b>Bluetooth</b>	<b>Summed SAR (W/kg)</b>
<b>Position</b>	<b>Scaled SAR (W/kg)</b>	<b>Scaled SAR (W/kg)</b>	
Back	<b>0.556</b>	0.021	<b>0.577</b>
Front	--	0.021	0.021
Right side	--	0.021	0.021
Left side	--	0.021	0.021
Top side	0.310	0.021	0.331
Bottom side	--	0.021	0.021

## 10. Measurement Uncertainty

### 10.1 Uncertainty for SAR Test

Input quantity $X_i$ (source of uncertainty)	Ref.	Prob. Dist PDF <sub>i</sub>	Unc. $a(x_i)$	Div. $q_i$	$u(x_i) =$ $a(x_i)/q_i$	$c_i$ (1 g; 10 g)	$u(y) = c_i \cdot u(x_i)$	$v_i$ or $v_{\text{eff}}$
<b>Measurement System errors</b>								
Probe calibration	8.4.1.1	N	7.00	2	3.5	1	3.5	$\infty$
Probe calibration drift	8.4.1.2	R	0	$\sqrt{3}$	0	1	0	$\infty$
Probe linearity and detection limit	8.4.1.3	R	5.00	$\sqrt{3}$	2.89	1	2.89	$\infty$
Broadband signal	8.4.1.4	R	0	$\sqrt{3}$	0	1	0	$\infty$
Probe isotropy	8.4.1.5	R	2.50	$\sqrt{3}$	1.44	1	1.44	$\infty$
Other probe and data acquisition errors	8.4.1.6	N	0.02	1	0.02	1	0.02	$\infty$
RF ambient and noise	8.4.1.7	N	0	1	0	1	0	$\infty$
Probe positioning errors	8.4.1.8	N	1.40	1	1.40	$2^{\text{TM}}$	0.70	
Data processing errors	8.4.1.9	N	0.05	1	0.05	1	0.05	$\infty$
<b>Phantom and device (DUT or validation antenna) errors</b>								
Measurement of phantom conductivity( $\sigma$ )	8.4.2.1	N	4.00	1	4.00	$c_\epsilon, c_\sigma$	4.00	$\infty$
Temperature effects (medium)	8.4.2.2	R	2.50	$\sqrt{3}$	1.44	$c_\epsilon, c_\sigma$	1.44	$\infty$
Shell permittivity	8.4.2.3	R	5.00	$\sqrt{3}$	2.88	See 8.4.2.3	2.88	$\infty$
Distance between the radiating element of the DUT and the phantom medium	8.4.2.4	N	0.03	1	0.03	2	0.02	$\infty$
Repeatability of positioning the DUT or source against the phantom	8.4.2.5	N	0.05	1	0.05	1	0.05	5
Device holder effects	8.4.2.6	N	5.00	1	5.00	1	5.00	
Effect of operating mode on probe sensitivity	8.4.2.7	R	0	$\sqrt{3}$	0	1	0	$\infty$
Time-average SAR	8.4.2.8	R	0	$\sqrt{3}$	0	1	0	$\infty$
Variation in SAR due to drift in output of DUT	8.4.2.9	N	5.00	1	5.00	1	5.00	
Validation antenna uncertainty (validation measurement only)	8.4.2.10	N	0	1	0	1	0	
Uncertainty in accepted power	8.4.2.11	N	0	1	0	1	0	

(validation measurement only)								
<b>Corrections to the SAR result</b>								
Phantom deviation from target ( $\epsilon', \sigma$ )	8.4.3.1	N	0.05	1	0.05	1	0.05	
SAR scaling	8.4.3.2	R	2.00	$\sqrt{3}$	1.15	1	1.15	
Combined Standard Uncertainty		RSS			10.11		10.11	$v_{\text{eff}}$
Expanded uncertainty, U		K=2			20.23		20.23	

## Annex A. Plots of System Performance Check

# MEASUREMENT 1

Type: Validation measurement (Fast, 75.00 %)

Date of measurement: 2024-09-25

Measurement duration: 12 minutes 21 seconds

E-field Probe: SSE2 - 3823-EPGO-435; ConvF: 1.62; Calibrated: 2024-07-11

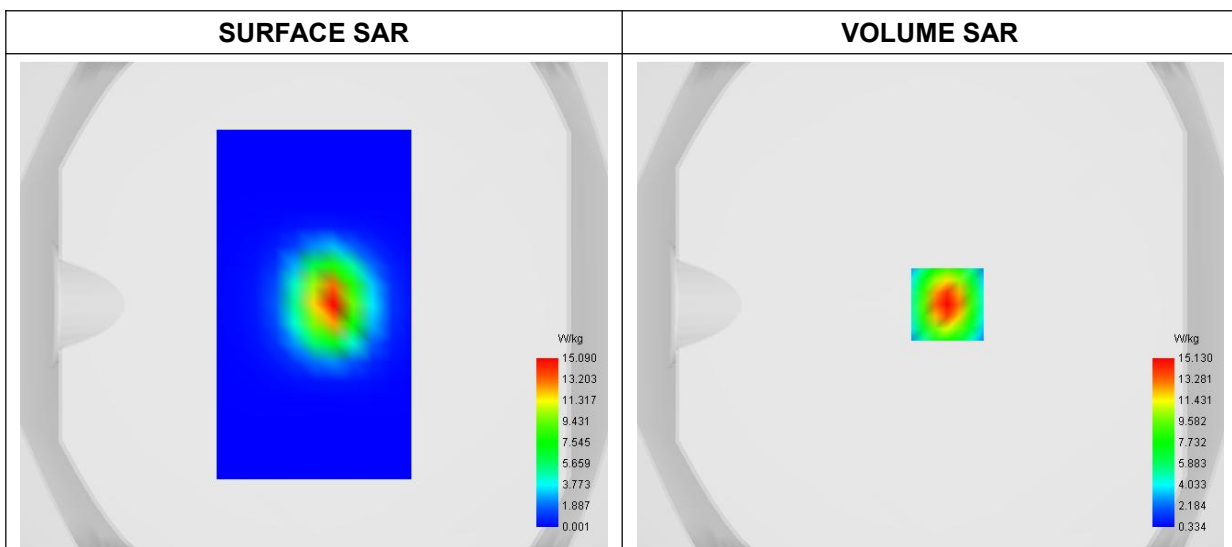
### A. Experimental conditions

Area Scan	dx=8mm dy=8mm
Zoom Scan	dx=5mm dy=5mm dz=4mm
Phantom	Validation plane
Device Position	Dipole
Band	CW2450
Signal	CW (Crest factor: 1.0)

### B. SAR Measurement Results

Frequency (MHz)	2450.000000
Relative Permittivity (real part)	40.152228
Conductivity (S/m)	1.834828
Power Variation (%)	1.475200
Ambient Temperature	23.0
Liquid Temperature	23.0

### C. SAR Surface and Volume



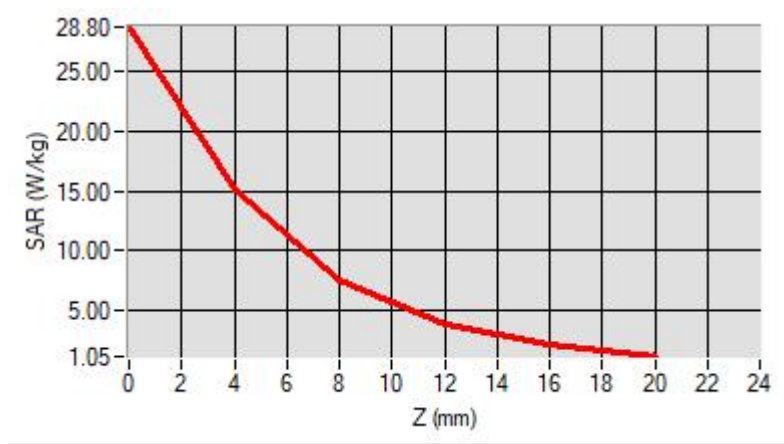
Maximum location: X=7.00, Y=0.00

D. SAR 1g & 10g

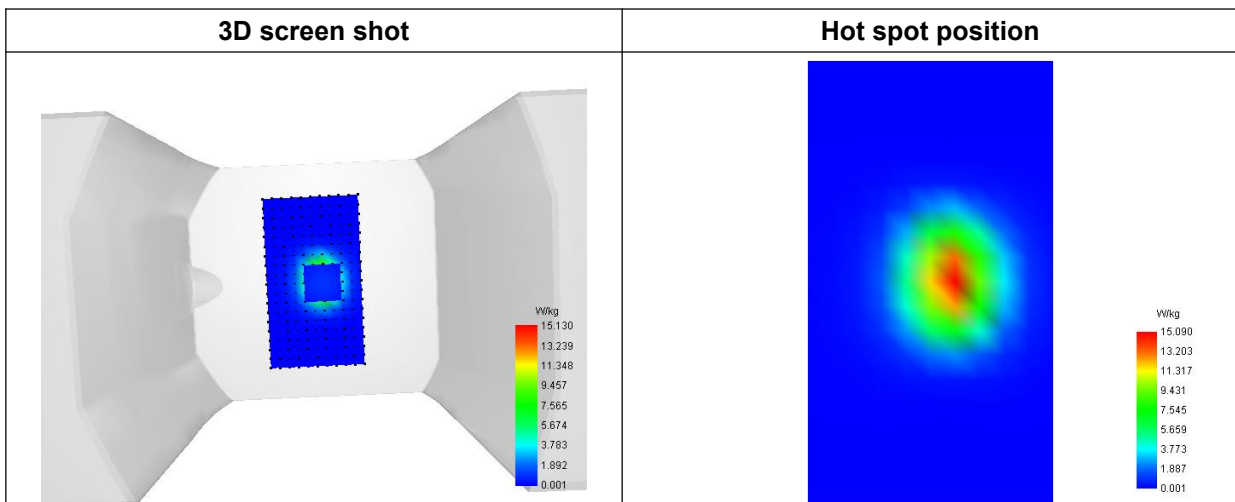
SAR 10g (W/Kg)	6.149024
SAR 1g (W/Kg)	13.746586

E. Z Axis Scan

Z (mm)	0.00	4.00	8.00	12.00	16.00
SAR (W/Kg)	28.7959	15.1301	7.5430	3.7436	1.9810



F. 3D Image





# MEASUREMENT 2

Type: Validation measurement (Fast, 75.00 %)

Date of measurement: 2024-09-26

Measurement duration: 12 minutes 21 seconds

E-field Probe: SSE2 - 3823-EPGO-435; ConvF: 0.97; Calibrated: 2024-07-11

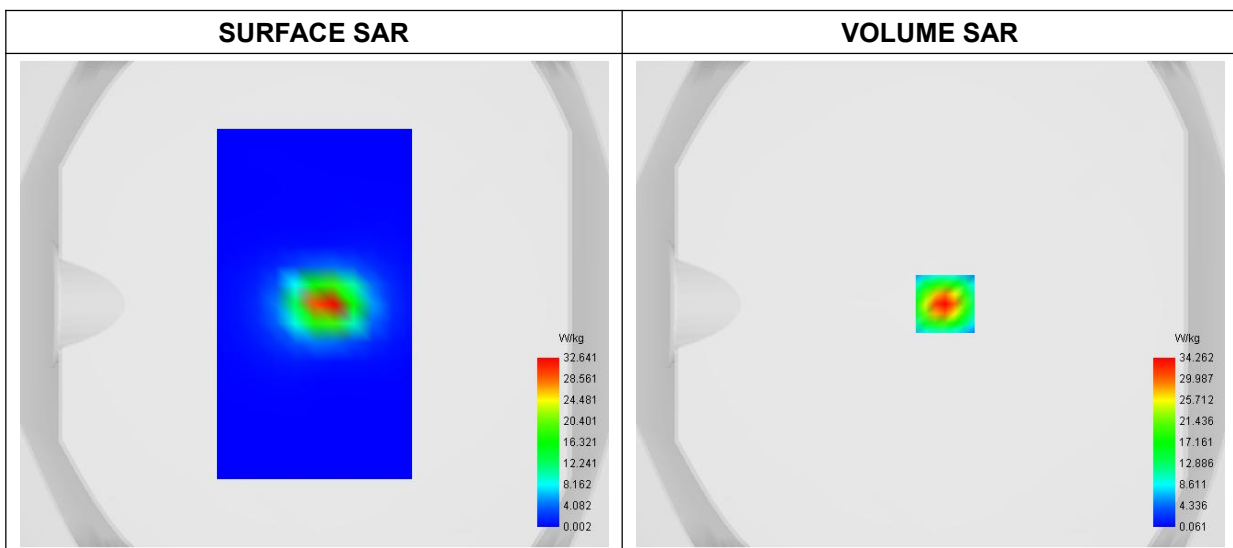
## A. Experimental conditions

<b>Area Scan</b>	dx=8mm dy=8mm
<b>Zoom Scan</b>	dx=4mm dy=4mm dz=2mm
<b>Phantom</b>	Validation plane
<b>Device Position</b>	Dipole
<b>Band</b>	CW5800
<b>Signal</b>	CW (Crest factor: 1.0)

## B. SAR Measurement Results

<b>Frequency (MHz)</b>	5800.000000
<b>Relative Permittivity (real part)</b>	34.763471
<b>Conductivity (S/m)</b>	5.302958
<b>Power Variation (%)</b>	-1.437500
<b>Ambient Temperature</b>	23.0
<b>Liquid Temperature</b>	23.0

## C. SAR Surface and Volume



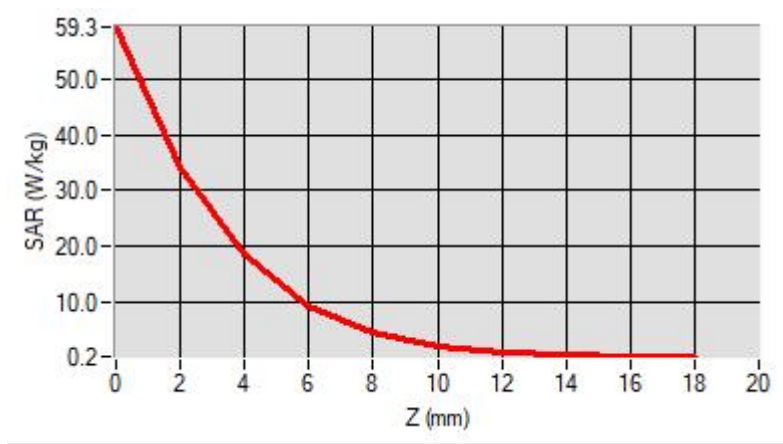
Maximum location: X=6.00, Y=0.00

D. SAR 1g & 10g

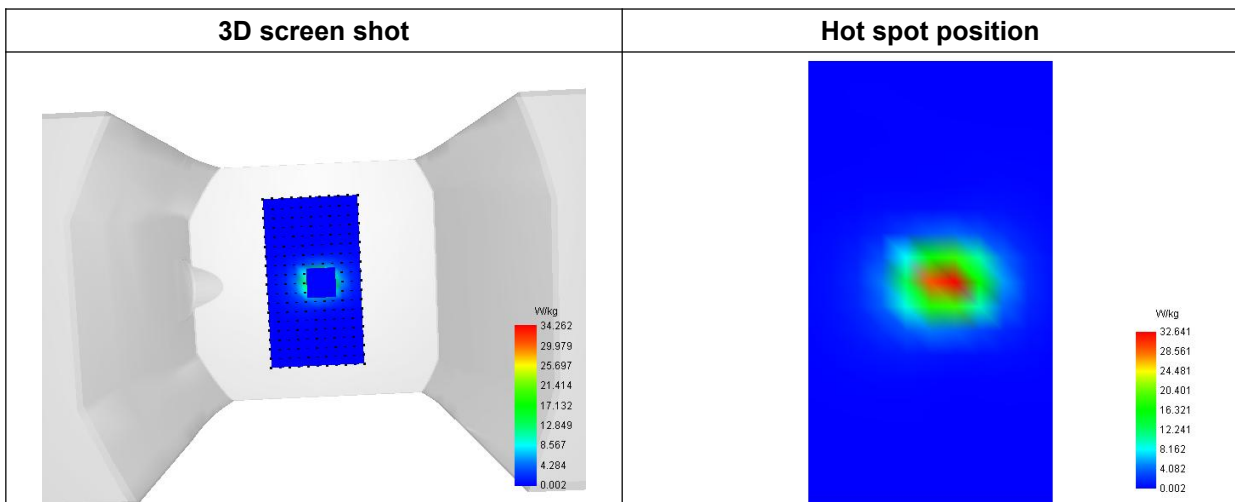
SAR 10g (W/Kg)	5.385932
SAR 1g (W/Kg)	18.087402

E. Z Axis Scan

Z (mm)	0.00	2.00	4.00	6.00	8.00	10.00	12.00	14.00	16.00
SAR (W/Kg)	59.320	34.261	18.434	9.2545	4.4822	2.1439	1.0586	0.5728	0.3524
	3	7	7						



F. 3D Image



## Annex B. Plots of SAR Measurement

# MEASUREMENT 1

Type: Measurement (Complete)

Date of measurement: 2024-09-25

Measurement duration: 12 minutes 3 seconds

E-field Probe: SSE2 - 3823-EPGO-435; ConvF: 1.62; Calibrated: 2024-07-11

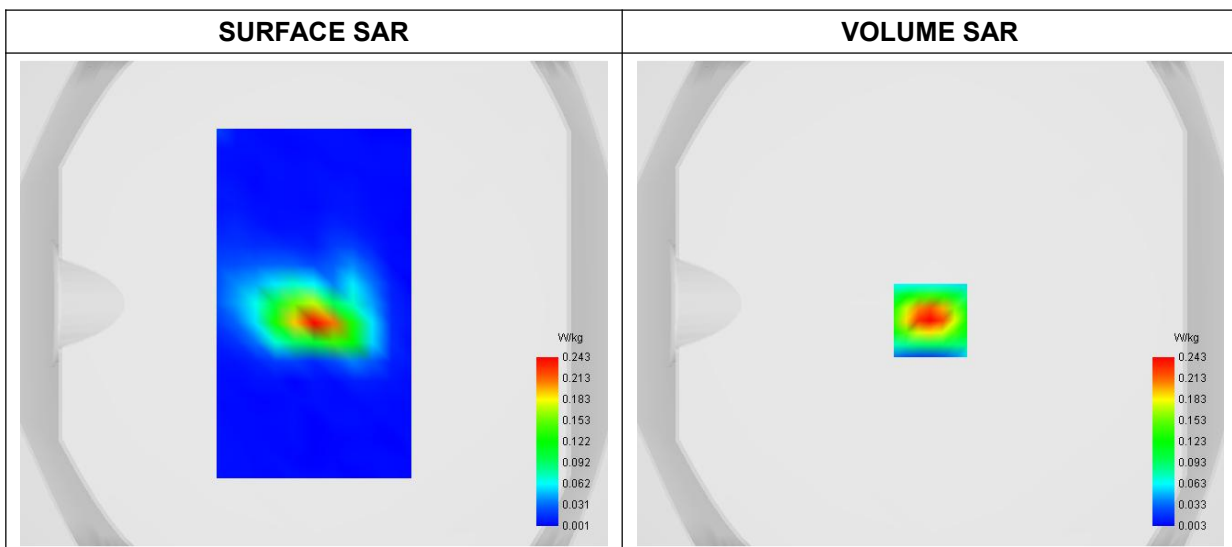
### A. Experimental conditions

<b>Area Scan</b>	dx=8mm dy=8mm
<b>Zoom Scan</b>	dx=5mm dy=5mm dz=4mm
<b>Phantom</b>	Flat Plane
<b>Device Position</b>	Back
<b>Band</b>	WiFi_802.11b
<b>Channels</b>	High
<b>Signal</b>	Duty Cycle 1:1

### B. SAR Measurement Results

<b>Frequency (MHz)</b>	2462.000000
<b>Relative Permittivity (real part)</b>	40.152768
<b>Conductivity (S/m)</b>	1.834572
<b>Power Variation (%)</b>	-0.417400
<b>Ambient Temperature</b>	23.0
<b>Liquid Temperature</b>	23.0

### C. SAR Surface and Volume



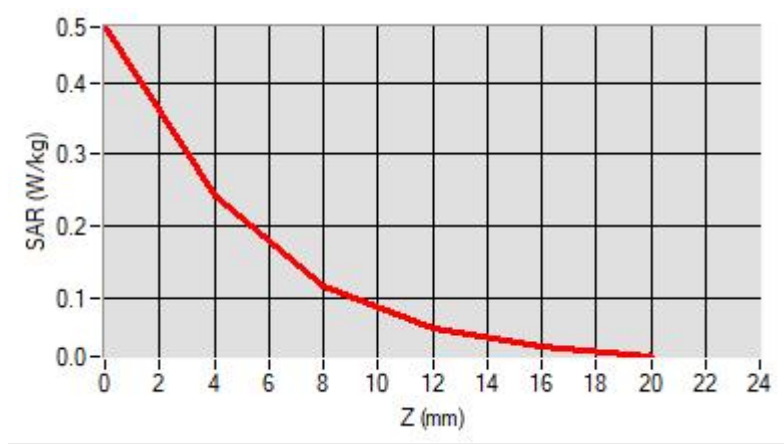
Maximum location: X=0.00, Y=-7.00

D. SAR 1g & 10g

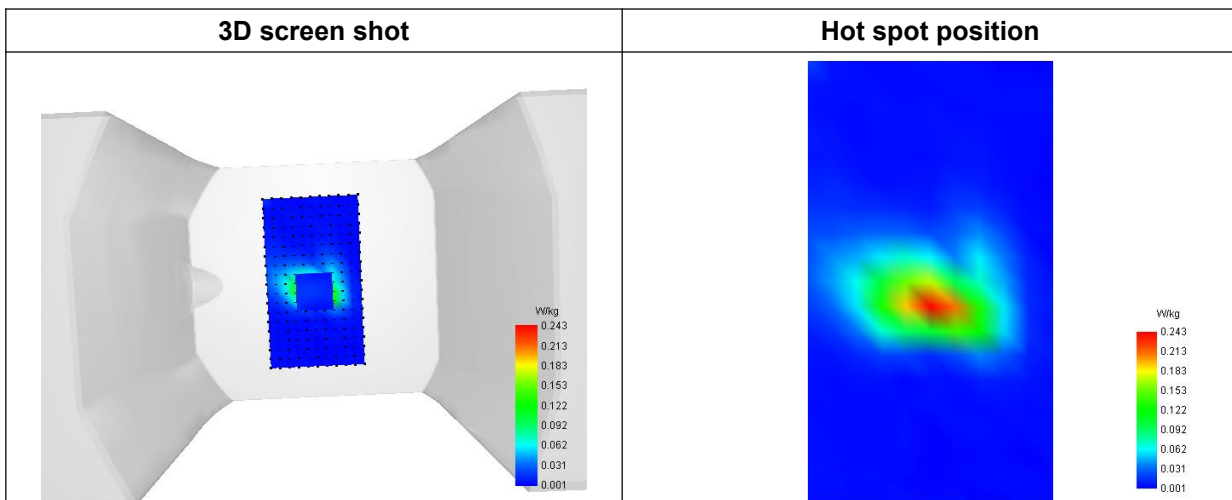
SAR 10g (W/Kg)	0.095504
SAR 1g (W/Kg)	0.219901

E. Z Axis Scan

Z (mm)	0.00	4.00	8.00	12.00	16.00
SAR (W/Kg)	0.4769	0.2427	0.1170	0.0572	0.0314



F. 3D Image



# MEASUREMENT 2

Type: Measurement (Complete)

Date of measurement: 2024-09-26

Measurement duration: 12 minutes 3 seconds

E-field Probe: SSE2 - 3823-EPGO-435; ConvF: 0.97; Calibrated: 2024-07-11

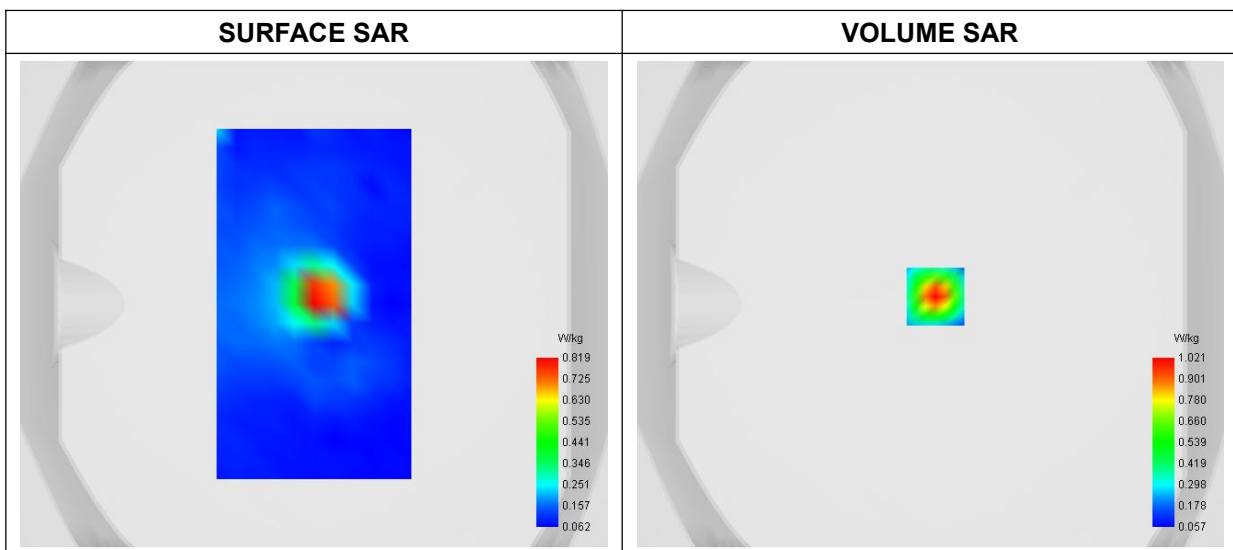
## A. Experimental conditions

<b>Area Scan</b>	dx=8mm dy=8mm
<b>Zoom Scan</b>	dx=4mm dy=4mm dz=2mm
<b>Phantom</b>	Flat Plane
<b>Device Position</b>	Back
<b>Band</b>	WLAN 5.8GHz_802.11a
<b>Channels</b>	High
<b>Signal</b>	Duty Cycle: 1:1

## B. SAR Measurement Results

<b>Frequency (MHz)</b>	5825.000000
<b>Relative Permittivity (real part)</b>	34.763299
<b>Conductivity (S/m)</b>	5.304148
<b>Power Variation (%)</b>	-1.621700
<b>Ambient Temperature</b>	23.0
<b>Liquid Temperature</b>	23.0

## C. SAR Surface and Volume



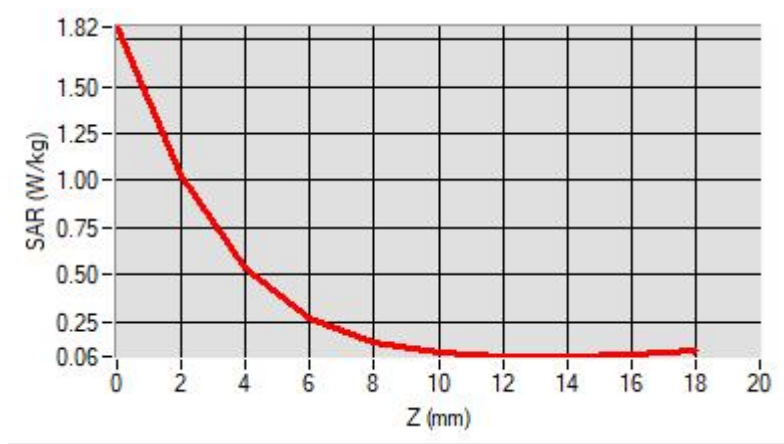
Maximum location: X=2.00, Y=3.00

D. SAR 1g & 10g

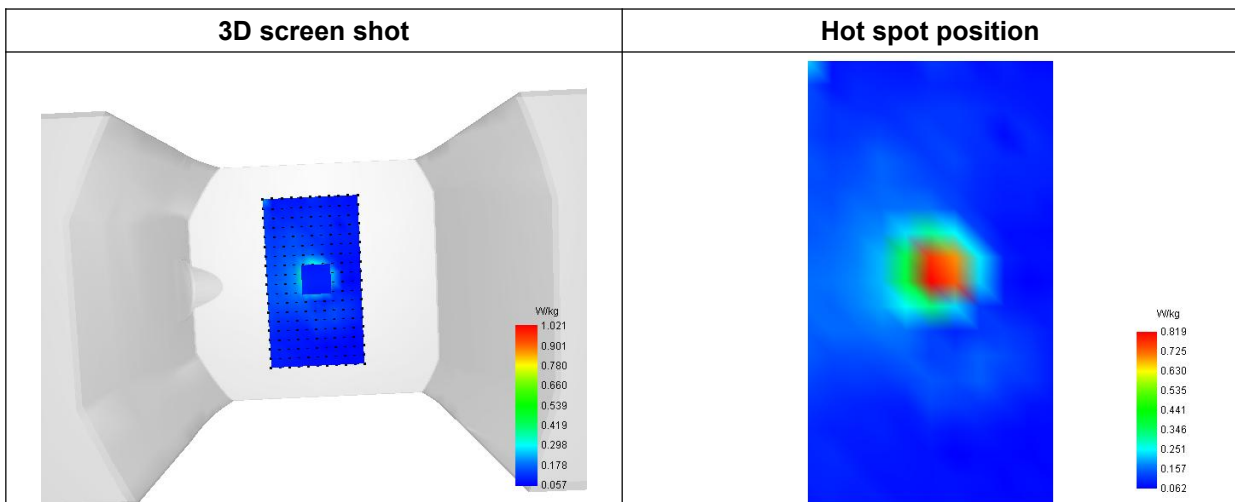
SAR 10g (W/Kg)	0.204175
SAR 1g (W/Kg)	0.551709

E. Z Axis Scan

Z (mm)	0.00	2.00	4.00	6.00	8.00	10.00	12.00	14.00	16.00	18.00
SAR (W/Kg)	1.8166	1.0214	0.5325	0.2661	0.1391	0.0836	0.0639	0.0634	0.0754	



F. 3D Image



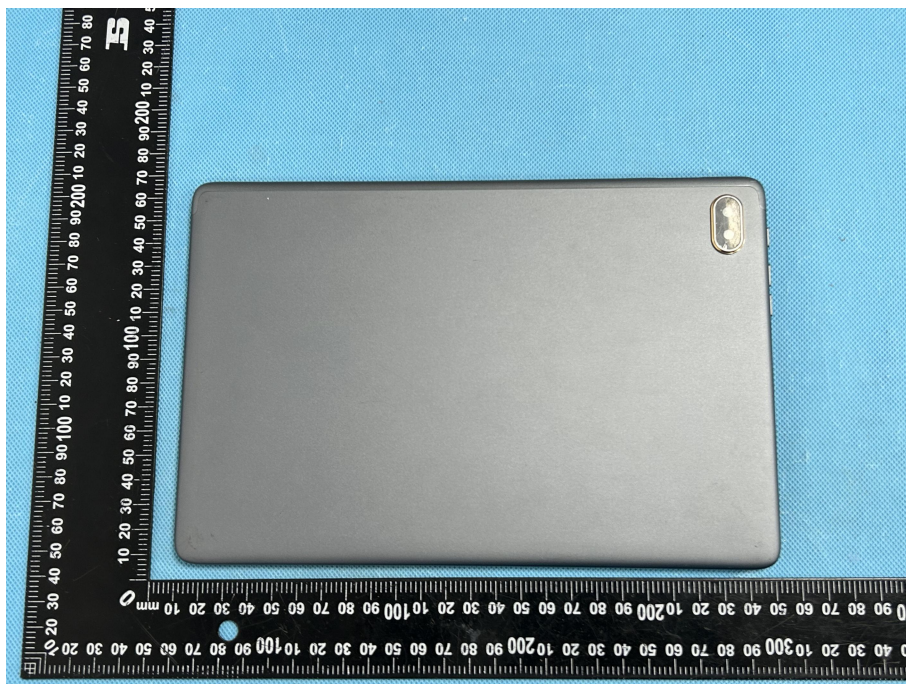
## Annex C. EUT Photos

---

### EUT View 1

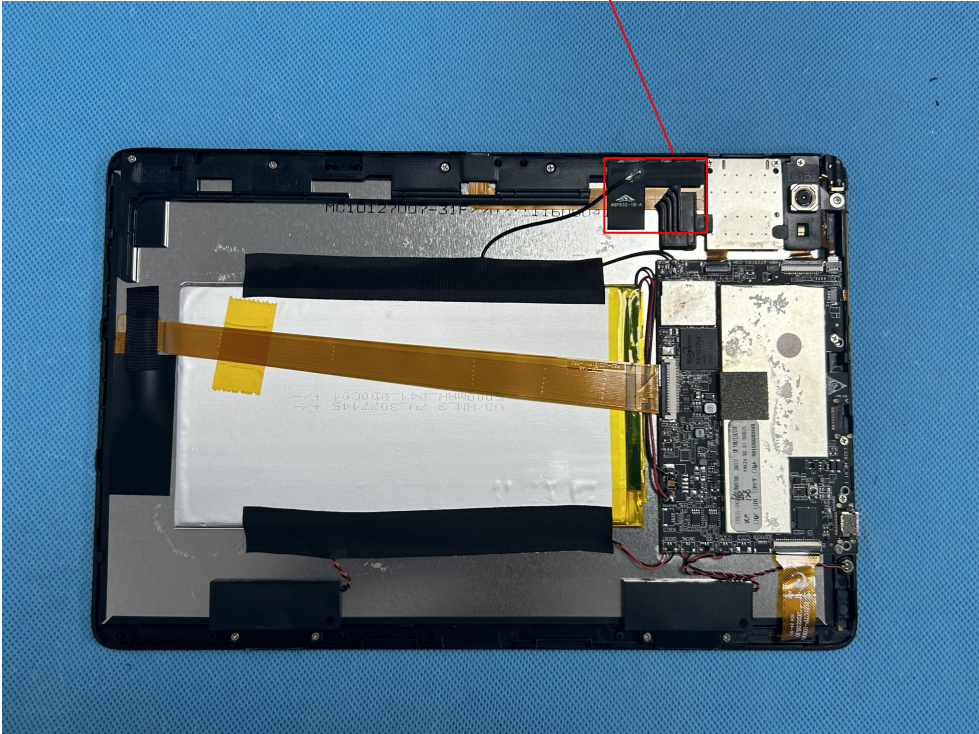


### EUT View 2



**Antenna View**

WIFI/BT/GPS Ant





## Annex D. Test Setup Photos

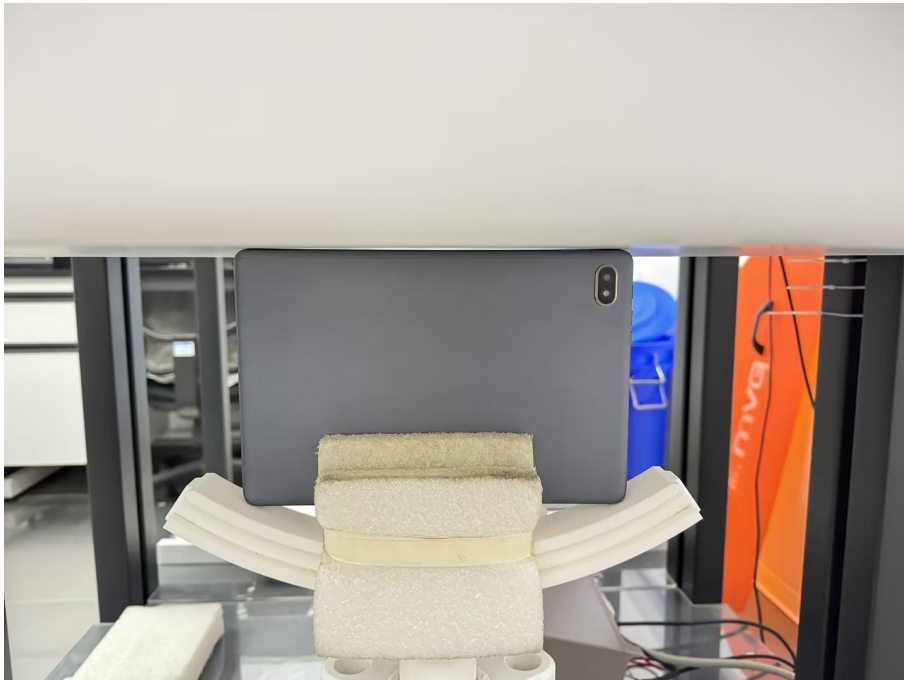
---

**Body mode Exposure Conditions**  
**Test distance: 0mm**

**Body Back**



**Body Top**



## **Annex E. Calibration Certificate**

---

*Please refer to the exhibit for the calibration certificate*

**\*\*\*\*\* END OF REPORT \*\*\*\*\***