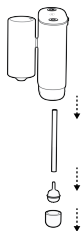


How to Disassemble

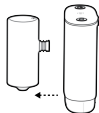
1. Power off the device first, then hold the main unit and pour the water in the water tray into the tank. Finally, pull the main unit off the water tray.



2. Pull off the pipe, water inlet and cotton filter.



3. Pull off the ultrafiltration filter.

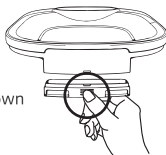


4. Press and pull it down to remove the foam filter box. Change the foam filter regularly.



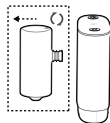
Notes

Press and pull it down



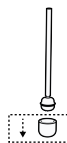
Change the Filter and Foam

1. To avoid blockage inside the filter cartridge, **change the ultrafiltration filter at least once a month**. When the filter change indicator lights up, change the filter immediately.



2. To keep the water clean and avoid dirt entering the tank, it's recommended to **clean the foam filter and cotton filter at least once a week and replace it at least once every two weeks**.

If the room temperature is high and you have more than one pet using the water fountain, you should wash or replace the filter **more frequently**.



3. To avoid any potential risks caused by using filters from other brands, please use the ultrafiltration filter and foam filter **we provided**.

TROUBLESHOOTING

Problem	Solution
The fountain doesn't dispense water or dispense water slowly with a lot of bubbles.	<ol style="list-style-type: none">1. Please make sure the tank has enough water.2. Then reboot the device to see if it works normally.3. Please reinstall the ultrafiltration filter.
The water tank is dirty. The foam filter is dirty. The interior of the water tank/water tray is sticky.	<p>Clean the device and change the filter regularly.</p> <ol style="list-style-type: none">1. Change the ultrafiltration filter at least once a month.2. Change the foam filter at least once every two weeks.3. Clean the device thoroughly at least once a week.4. If the room temperature is high or if you have more than one pet using the water fountain, please do clean and change more frequently. Refer to the part CLEAN AND CARE for details.
The device won't charge. Battery life is not as expected. The device won't power on.	<ol style="list-style-type: none">1. Don't place the water fountain in areas with high activity to reduce frequent motion detection and power consumption.2. Please use the included power cable and adapter for charging.3. To avoid potential safety hazards, do not disassemble the device.

Clean Other Parts

1. It's recommended to clean the whole device thoroughly once a week.
2. Use the cleaning brush to clean the water tray and the interior of the tank. Dish detergent can be used to help clean, rinse it before use.
3. Don't forget to clean the foam filter and water inlet.
4. Use the cleaning brush to clean the narrow space, such as water inlet, water outlet, etc.

Notes

Do not wash or rinse the main unit. Plastic parts and the main unit cannot be cleaned in a dishwasher.



SPECIFICATIONS

Model	TK-WF117
Power Adapter	Input: AC 100-240V 50/60Hz Output: 5V DC
Effective Capacity	3.5L/118oz
Battery Capacity	5200mAh
Battery Type	Li-ion Battery Pack
Dimensions	238x172x151 mm

BATTERY PCAK

The water dispenser has a built-in rechargeable battery, please pay attention to the following items in daily use:

1. The built-in battery cannot be disassembled. Please do not disassemble it by yourself to avoid a decline in battery performance or damage to the battery. In serious cases, electrical safety hazards overheating, fire or injury may occur.
2. If the product has not been used for a long time, please charge the product at least once every six months to avoid affecting the service life of the battery.
3. When low power is prompted, please charge the battery as soon as possible to avoid affecting the service life of the battery.
4. Avoid using it at low temperature, otherwise, the battery power will decrease, which is a normal phenomenon.
5. Please use the power adapter in the package to charge the water fountain.
6. DO NOT expose the battery to any direct heat source, including fire or direct sunlight.
7. The battery must be removed from the water fountain before it is scrapped.
8. DO NOT dispose of the water fountain or the Battery Pack in fire, water or other liquids. This is to avoid any explosion hazards.
9. DO NOT dispose of the Li-ion battery in your household waste. Dispose of it by following your local environmental laws and regulations.
10. Do not heat above 140° F[60° C] or incinerate the battery pack.Keep the battery pack away from children.

FCC Warning

This device complies with Part 15 of the FCC Rules. Operation is subject to the following two conditions:

(1) This device may not cause harmful interference, and (2) this device must accept any interference received, including interference that may cause undesired operation.

NOTE 1: This equipment has been tested and found to comply with the limits for a Class B digital device, pursuant to part 15 of the FCC Rules. These limits are designed to provide reasonable protection against harmful interference in a residential installation. This equipment generates, uses and can radiate radio frequency energy and, if not installed and used in accordance with the instructions, may cause harmful interference to radio communications. However, there is no guarantee that interference will not occur in a particular installation. If this equipment does cause harmful interference to radio or television reception, which can be determined by turning the equipment off and on, the user is encouraged to try to correct the interference by one or more of the following measures:

- Reorient or relocate the receiving antenna.
- Increase the separation between the equipment and receiver.
- Connect the equipment into an outlet on a circuit different from that to which the receiver is connected.
- Consult the dealer or an experienced radio/TV technician for help.

NOTE 2: Any changes or modifications to this unit not expressly approved by the party responsible for compliance could void the user's authority to operate the equipment.

RF Exposure Statement

To maintain compliance with FCC'S RF Exposure guidelines, This equipment should be installed and operated with minimum distance of 20cm between the radiator and your body. This device and its antenna(s) must not be co-located or operation in conjunction with any other antenna or transmitter.