

How to bind app

Step 1. App download and installation

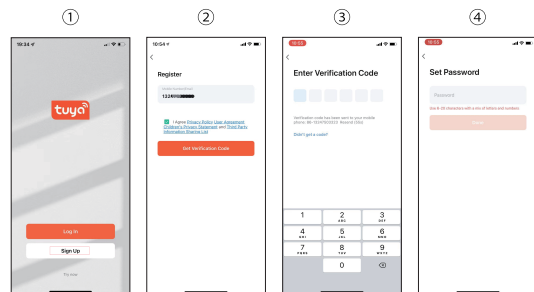
Please scan the QR code or QR code on the packaging box to download TuyaSmart app and complete the installation.

Or manually look up TuyaSmart App on your phones app store.



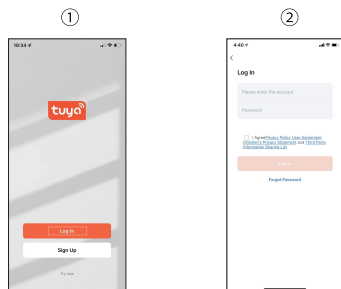
Step 2. App Registration / Login

a. Account registration



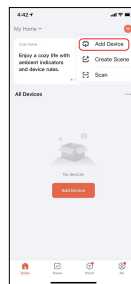
- ① Please open the "Tuyasmart" app and click "Sign up"
- ② Please enter your email address and tick the app policy
- ③ Please input the verification code sent to your email address
- ④ Please set up your login password

b. Login (existing Tuyasmart account)

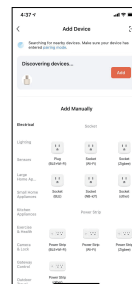


- ① Please click "log in"
- ② Enter your login details and tick the app policy

Step 3. Pet Fountain Configuration



① After you log in, click "add device"



② Click "add" after "discovering devices"



③ Enter Wi-Fi Password

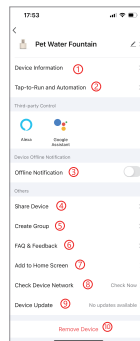
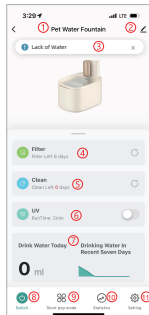
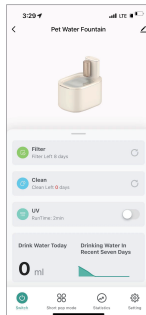


④ Connecting...



⑤ Device added successfully

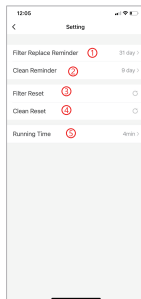
Step 4: Interface introduction



- ① Device name, It can be modified.
- ② Fountain information.
- ③ "Lack of water" and "Low of battery" notification if there is low water and low battery.
- ④ Remind filter replace time.
- ⑤ Remind cleaning time.
- ⑥ Turning on the sterilizer button, the UV operation can achieve sterilization (adjustable from 0 to 4 minutes)

- ⑦ Drinking water data.
- ⑧ Turn on / off the device.
- ⑨ Two status: normal and smart.(On the smart mode the settings cannot be adjusted as they are based on the recommended values. whereas on the normal mode the settings can be adjusted to your preferences).
- ⑩ Statistics
- ⑪ Setting

- ① View the device ID, IP address, MAC, zone time, signal.
- ② Tap-to-Run and Automation.
- ③ If the device is offline, the APP will send a message after 30 minutes.
- ④ It can share to other mobile numbers.
- ⑤ Create Group.
- ⑥ FAQ & Feedback.
- ⑦ Add to Home Screen.
- ⑧ Check Device Network.
- ⑨ Device Update.
- ⑩ Remove device will delete the Wifi information from the device. Then use a new account to connect.



- ① Set filter replace time.
- ② Set clean pump, water tank time.
- ③ After replace filter, click it, start timing.
- ④ After clean pump, water tank, click it, start timing.
- ⑤ After change water, click it, start timing.