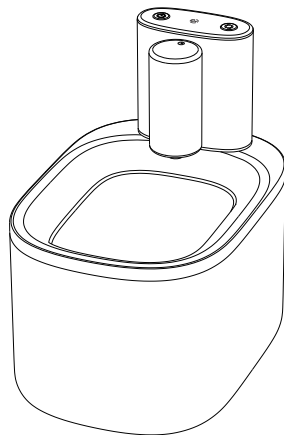


USER MANUAL

Canyon Lake
Smart Sensor Pet Water Fountain



Canyon Lake
Smart Sensor Pet Water Fountain

Model: TK-WF117

Made in China

TK-WF117_V0.1



This device complies with Part 15 of the FCC Rules. Operation is subject to the following two conditions: (1) this device may not cause harmful interference, and (2) this device must accept any interference received, including interference that may cause undesired operation.

Model: TK-WF117

Read the user manual before use and keep it
for further reference.

CONTENTS

Safety precautions	01
Product Overview	03
Power the fountain	05
How to Install	07
How to bind App	11
Indicators and buttons	15
How to disassemble	17
Change the filter and foam	18
Troubleshooting	19
Clean other parts	20
Specifications	20
Battery pack	21
FCC statement	22

SAFETY PRECAUTIONS

! Warning

- Dispose of all packaging materials properly. Keep the polybags away from children and pets as these bags could cause suffocation.
- Do NOT allow children to play with, in or around the pet water fountain.
- To avoid injury, please keep close supervision when the appliance is used near children.
- Do NOT use the water fountain with pets not able to reach the water tray or with any physical disability.
- Do NOT place any foreign object in the water tank.
- Do NOT disassemble the pet fountain other than components as instructed in this User Manual.
- Do NOT use the pet fountain for anything other than its intended use.
- Only use attachments recommended or sold by the manufacturer. The use of attachments not recommended or sold by the manufacturer may cause an unsafe condition. Do NOT modify the pet fountain.
- Do NOT operate any appliance if the unit is malfunctioning or has been damaged. Do not attempt repairs on the device yourself. Contact our customer service immediately for further instructions.
- Be sure to disconnect the power supply for safety when the appliance is not in use.
- Please disconnect the power supply before maintaining and cleaning the machine.
- Always unplug the appliance when not in use; or before putting on or taking off parts and before cleaning.
- The power adapter and wire plug must not be flooded during cleaning.
- This product is for indoor use only.

- This product is not allowed to run without water.
- If the plug of this device gets wet, turn off the electricity of that wall outlet. Do NOT attempt to unplug.
- Check the device after installation. Do NOT plug in if there is water on the contact points or plug.
- To avoid tripping, always position the power cord out of the way of foot traffic.
- Do not use the appliance in the bathroom.
- Replace the filter at least once every month or when the flow rate has noticeably reduced. For two or more cats, you may need to replace the filters more regularly if it becomes blocked.
- In the whole machine, only the stainless steel part can be put into the dishwasher for cleaning, DO NOT put other parts into the dishwasher, otherwise, there is a risk of electricity leakage and out of shape.

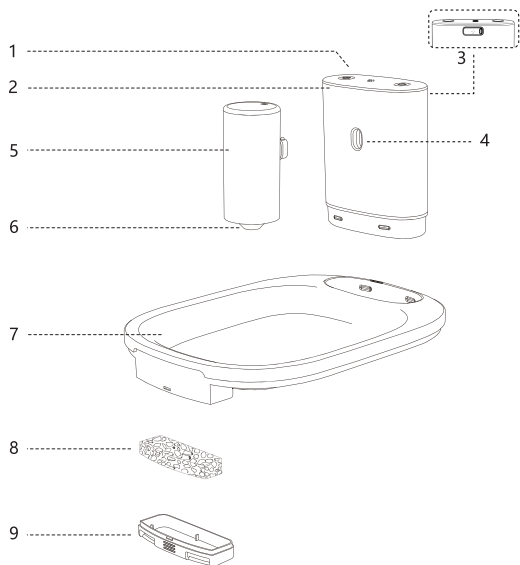
CAUTION

- Do NOT allow pets to chew on or swallow any parts. If you are concerned about the power cord, purchase a cord conduit (a hard-plastic protector) at any hardware store to protect the power cord.
- If an extension cord is necessary, one unit with a proper rating should be used.
- Do NOT install or store the pet water fountain where it will be exposed to weather or temperatures below 0° C / 40°F.

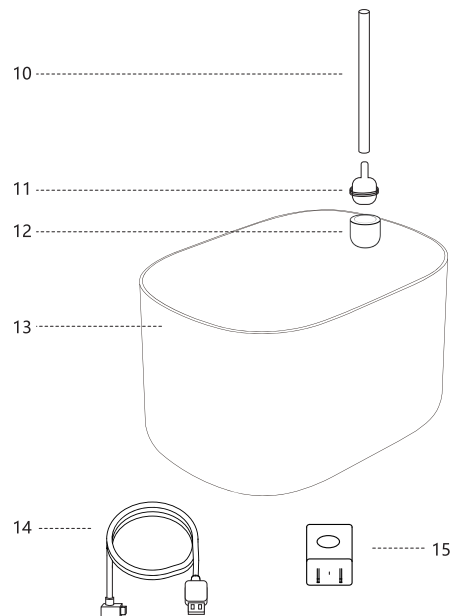
Radiation Exposure Statement

- To maintain compliance with FCC's RF Exposure guidelines, This equipment should be installed and operated with minimum distance of 20cm from your body.

PRODUCT OVERVIEW



- | | | |
|------------------|---------------------------|--------------------|
| 1) Control Panel | 4) Port for UF Filter | 7) Water Tray |
| 2) Main Unit | 5) Ultrafiltration Filter | 8) Foam Filter |
| 3) Charging Port | 6) Water Outlet | 9) Foam Filter Box |



- | | | |
|------------------------|-----------------------------|------------------|
| 10) Water Pipe | 12) Spherical sponge | 14) Type-C Cable |
| 11) Water Inlet | 13) Water Tank | 15) Adapter |

Power the Fountain

The fountain is powered by an built-in rechargeable lithium battery pack.

Attention

1. The lithium battery pack is non-removable, do not attempt to disassemble it.



2. Before first use, please charge it for about 2-3 hours.

3. When the low battery indicator lights up, use the included power adapter and cable to charge the device for about 5 hours.

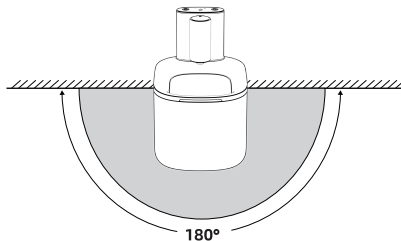
4. The fountain can work during charging.

Work Mode

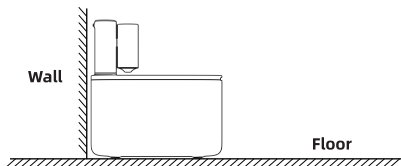
Our device is a motion sensing fountain, when the fountain senses nearby movement, it starts dispensing water 30 seconds.

Notes

1. The sensing angle is 180°, and the sensing radius is about 60cm / 23.6in.



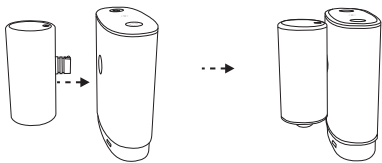
2. The back of the device can't sense, it's recommended to put the device against a wall.



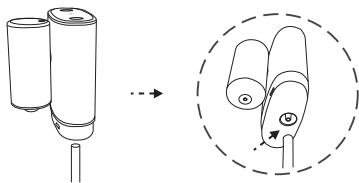
3. To attract pets to drink, the fountain automatically dispenses water once every 2 hours.

How to Install:

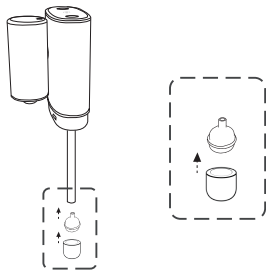
1. Mounting the filter box to Fountain hub.



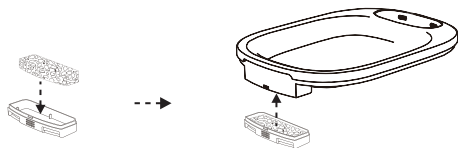
2. Fix the soft water pipe underneath.



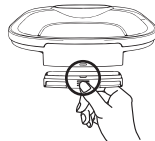
3. Put the sinking bead to Soft pipe.



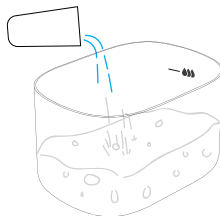
4. Install the Filter foam to Filter Tray, and fit it to water tray up there. (Press and pull it down to remove the foam filter box)



How to Disassemble
Press and pull it down



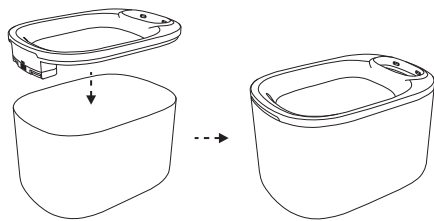
5. Add the water to the tank.



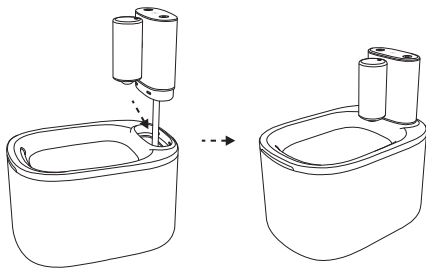
Notes

Do not exceed the maximum water level.

6. Fit the whole water tray(include filter foam) to Tank.



7. Install the Fountain hub to Water Tray.



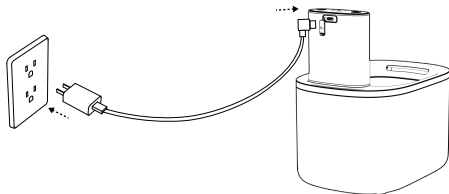
Power On

Add water to the tank, and then press the power button to power on the device.



Notes

- 1.To extend the lifespan of the water pump, preventing it from sucking in air which can cause slow water output and bubbles, please make sure the tank has enough water before powering it on.
2. If the battery level is low, use the included power cable and adapter to charge the device.



Power Off

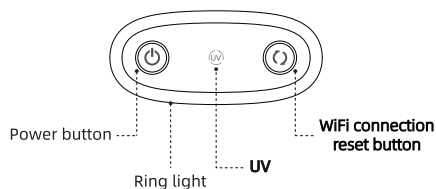
Press the power button to power off the device.






Notes

For long-time storage, please fully charge the device before powering it off.



INDICATORS AND BUTTONS



Indicators

Indicators	Color	Refer to	Indicator status	Fountain Status
Ring light	blue		Flashing	Charging
			Steady on	Fully charged
			Flashing	When Radar Sense, the fountain dispenses water.
UV	red		Steady on	UV Sterilizer

Buttons

Button	Icon	Function	Method	Description
Power button		Power on	Press once	Power on the fountain.
		Power off	Press once	Power off the fountain.
WiFi reset button		UV Sterilizer	Press once	Automatically dispense water once and UV Sterilizer
		WiFi connection reset	Press and hold for 3 seconds	WiFi connection reset button