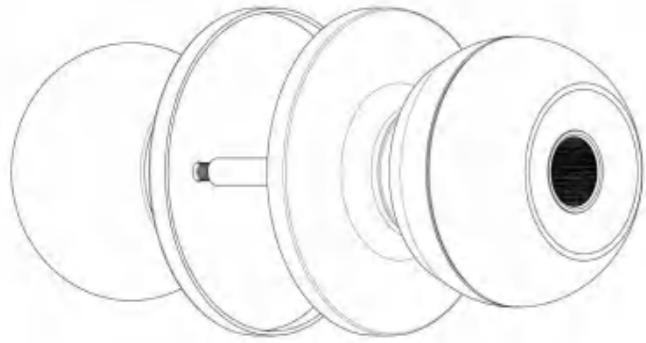


User Manual



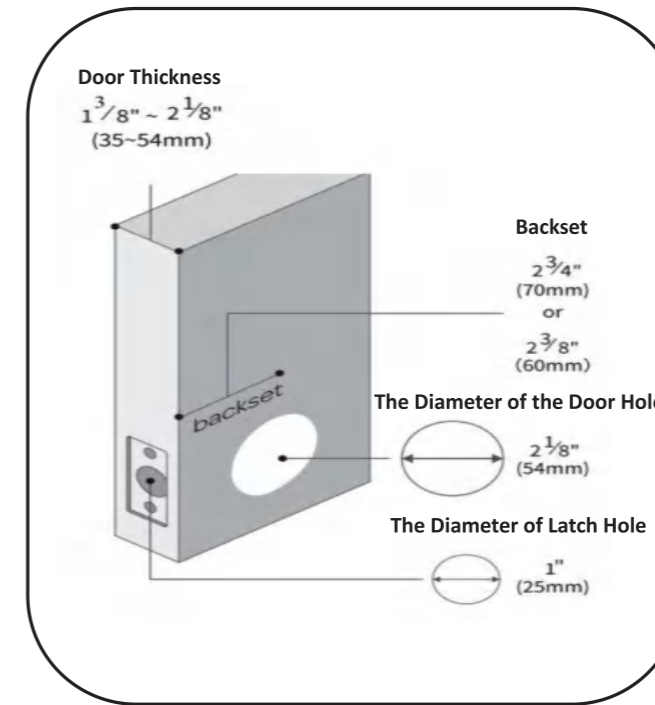
CONTENTS

- ◆ INSTALLATION GUIDE1
- ◆ Prepare Door and Check Dimensions2
- ◆ Install Latch and Strike3
- ◆ Install Exterior Knob & Interior Knob5
- ◆ OPERATION GUIDE9
- ◆ APP GUIDE13
- ◆ Account Registration13
- ◆ Pairing Your Lock16
- ◆ App Unlock/Lock19
- ◆ Create Smart Scenes20
- ◆ Member Management and Fingerprints21
- ◆ Setting23
- ◆ Device Information Set Up24
- ◆ SPECIFICATIONS25
- ◆ FCC WARNING26

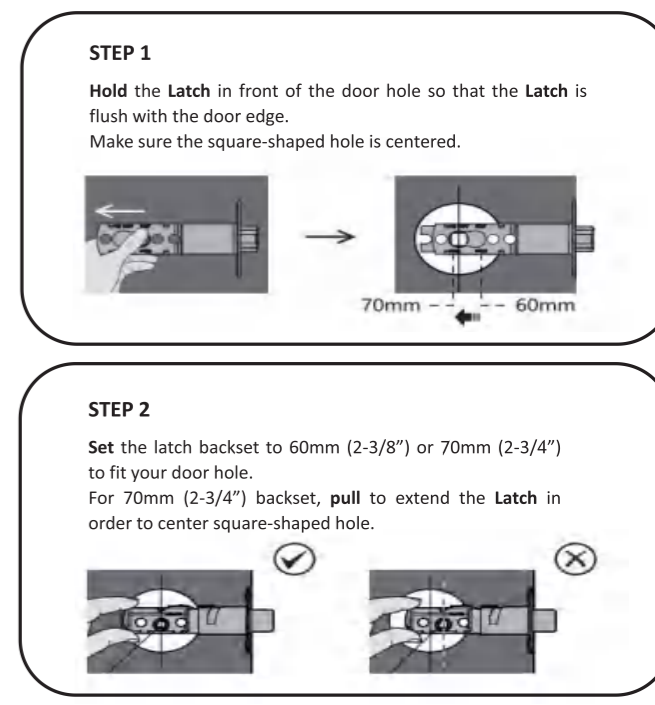
◆ INSTALLATION GUIDE

Tools Required				
	Phillips Screwdriver		Tape Measure	
Parts(Components list)				
	Exterior Knob 1PC		Interior Knob 1PC	
	Strike Plate 1PC		Strike Box 1PC	
	Key 2PCS		Pin 1PCS	
				User Manual 1PC
				QA certification 1PC

◆ Prepare Door and Check Dimensions



◆ Install Latch and Strike



1

2

3

STEP 3

Insert the Latch into the door hole, and tighten Screw A to fix the Latch. Install Strike Box and Strike Plate with Screw A into the door frame.

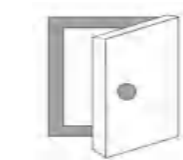


In more cases, the existing plate is ready to be used. You can keep the strike plate in box for future use.
If not, please make sure the bolt is aligned correctly with the strike plate.

4

◆ Install Exterior Knob & Interior Knob

Install Exterior Knob



STEP 1
Make sure the door is open.



STEP 2
Make sure the keyhole is under the Exterior Knob



keyhole

5

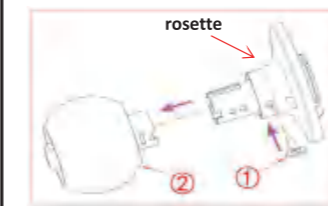
Install Exterior Knob



STEP 3
As shown above, install the Exterior Knob onto the door with the rod bolts going through the circular holes on the Latch, and spindle going through the square-shaped(center)hole.

6

Install the Interior Knob



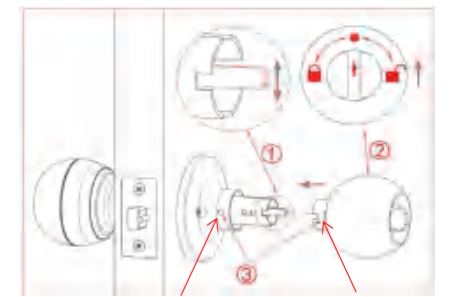
STEP 1
Insert the pin into the hole as shown in figure 1 and separate the rosette from the Interior Knob as shown in figure 2.



STEP 2
The "up" mark above the rosette should face upward. Install the rosette onto the door with the rod bolts aligning the circular holes, and spindle aligning the square-shaped(center)hole. Then insert the Screw B into the circular holes and tighten them to secure the rosette.

7

Install the Interior Knob



circular hole rectangular hole

STEP 3
Firstly, make sure the spindle bar is in the vertical position as shown above. Secondly, rotate the thumb turn to the circular mark. Lastly, insert the Interior Knob into the rosette by aligning the hole of interior knob with the spindle bar and aligning the rectangular hole at the edge of the interior knob with the circular hole at the edge of the rosette.

8

◆ OPERATION GUIDE



Key To Unlock

- Insert the key into the keyhole at the edge of the Exterior Knob and turn the key 90° to unlock, then turn the Exterior Knob to open the door.



Passage Mode

- As shown above, rotate the thumb turn to unlock sign on the right to activate passage mode. After activating passage mode, the door knob is always unlocked.

9

Normal Mode

- As the figure shows, rotate the thumb turn to circular mark above the thumb turn to switch to normal mode. In the normal mode, after unlocking with the fingerprint, the door knob automatically locks in 5 seconds. Both members and administrators can unlock with their fingerprints.

Privacy Mode

- As the figure shows, rotate the thumb turn to lock sign on the left to active privacy mode. In the privacy mode, Both members and administrators can unlock via app. Only the administrator's fingerprint can unlock.

10



Restore Factory Setting

- Rotate the thumb turn from the circular mark to the lock sign on the left and then return the thumb turn to the circular mark, after repeat this operation 5 times, perform the same operation towards the right for 5 times. After that, you will hear the long beep and the fingerprint identification area flashes green.
- Any fingerprints can unlock the lock.

Low Power Indication

- After being unlocked by fingerprint or APP successfully, the buzzer beeps once, and the fingerprint identification area flashes green and then flashes red.

11

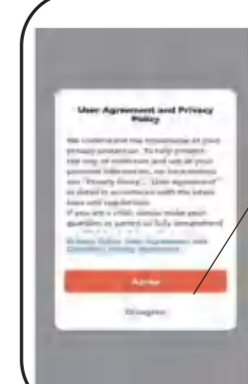
Action	Buzzer	Indicator
Power on	Beep once	Inactive
Fingerprint added successfully	Long Beep	Stay green for a while
Unlocking successful	Beeps once	Blinks green once
Unlocking failure	Beeps twice	Blinks red once
Low battery warning	Beeps once (after using fingerprint or app to unlock)	Blinks green then blinks red (after using fingerprint or app to unlock)
Resetting successful	Long Beep	Blinks green once

12

◆ APP GUIDE

◆ Account Registration

Tuya Smart App can be downloaded directly by scanning the QR code or downloaded from App Store(iOS) or Google Play(Android).



STEP 1
Click "Agree" to continue.

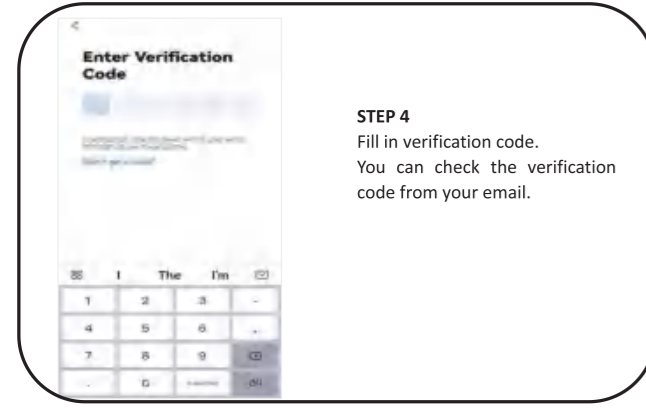


STEP 2
Choose "Sign Up".

13

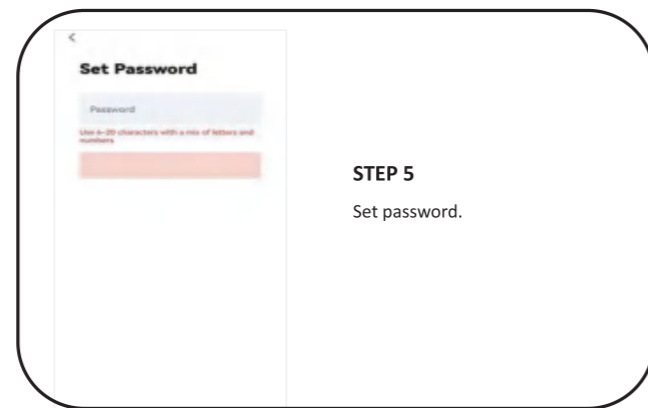


STEP 3
Choose your country and email address. Then click the square.

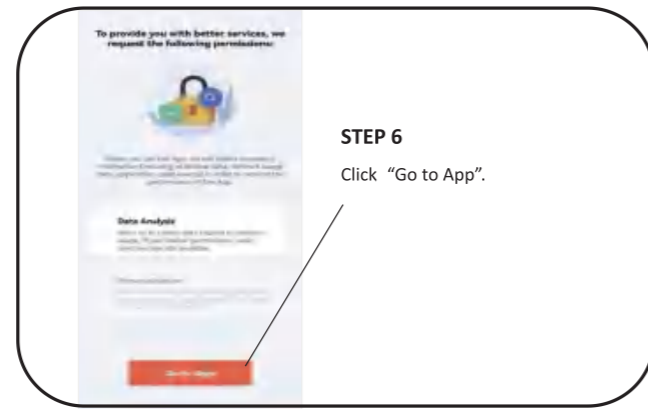


STEP 4
Fill in verification code. You can check the verification code from your email.

14



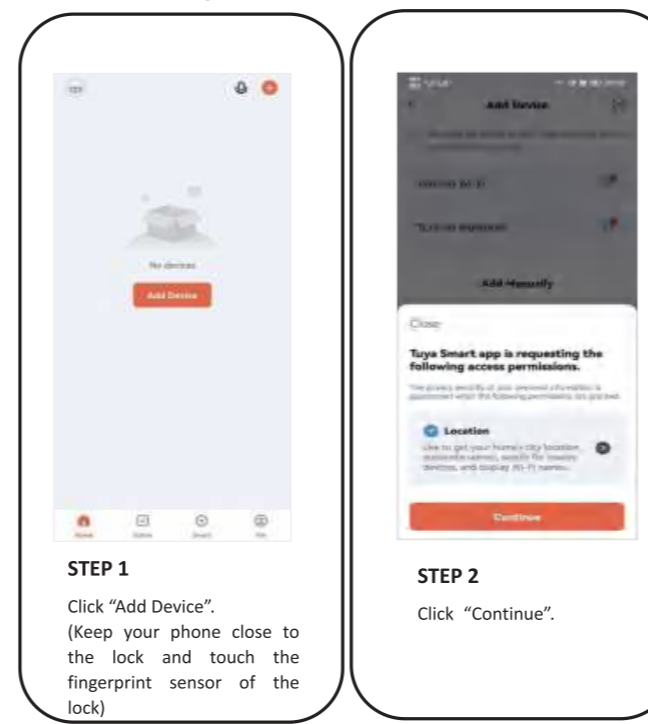
STEP 5
Set password.



STEP 6
Click "Go to App".

15

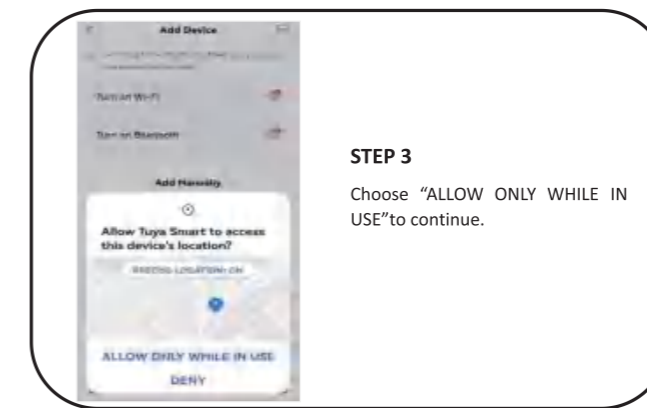
◆ Pairing Your Lock



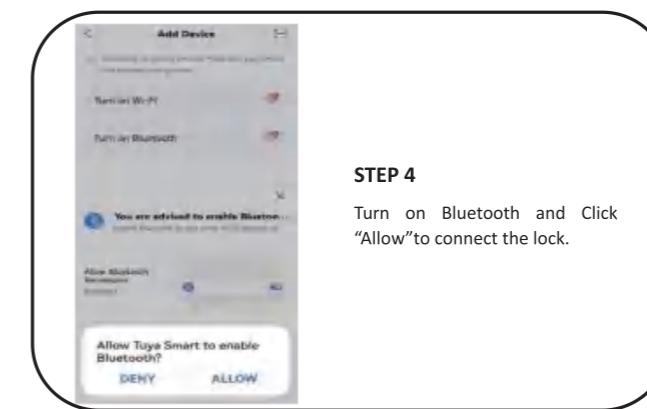
STEP 1
Click "Add Device". (Keep your phone close to the lock and touch the fingerprint sensor of the lock)

STEP 2
Click "Continue".

16

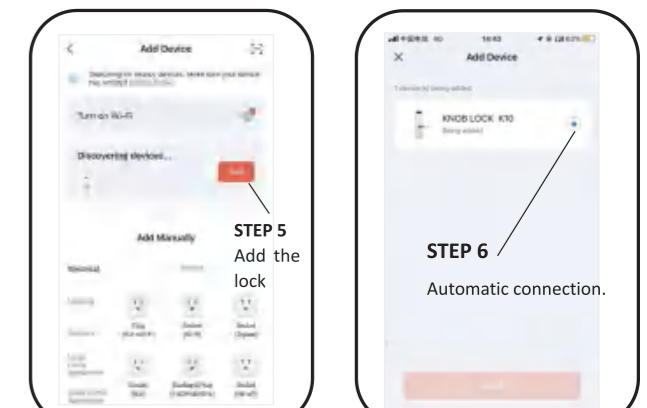


STEP 3
Choose "ALLOW ONLY WHILE IN USE" to continue.



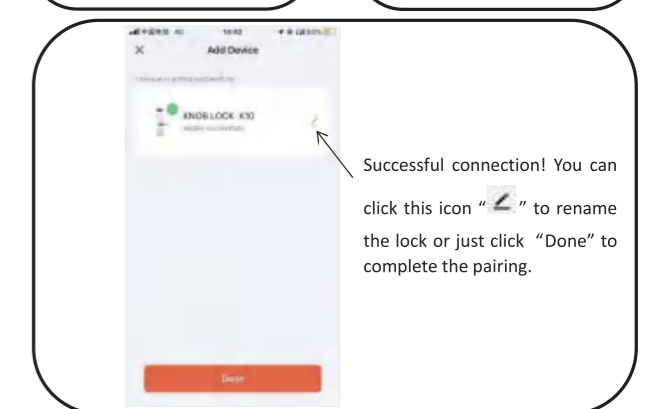
STEP 4
Turn on Bluetooth and Click "Allow" to connect the lock.

17



STEP 5
Add the lock

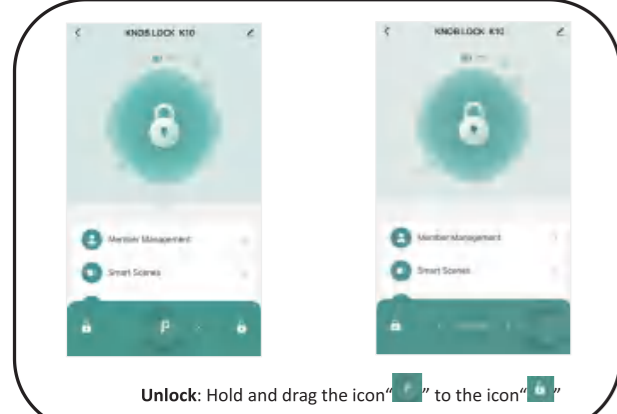
STEP 6
Automatic connection.



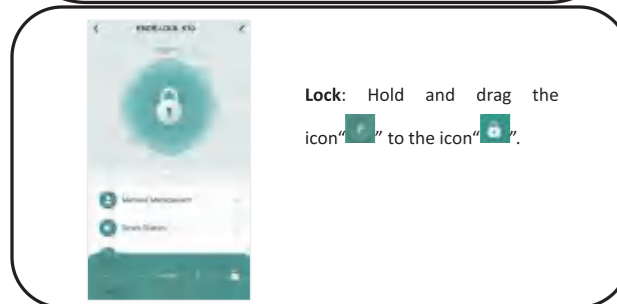
Successful connection! You can click this icon "🔄" to rename the lock or just click "Done" to complete the pairing.

18

◆ App Unlock/Lock



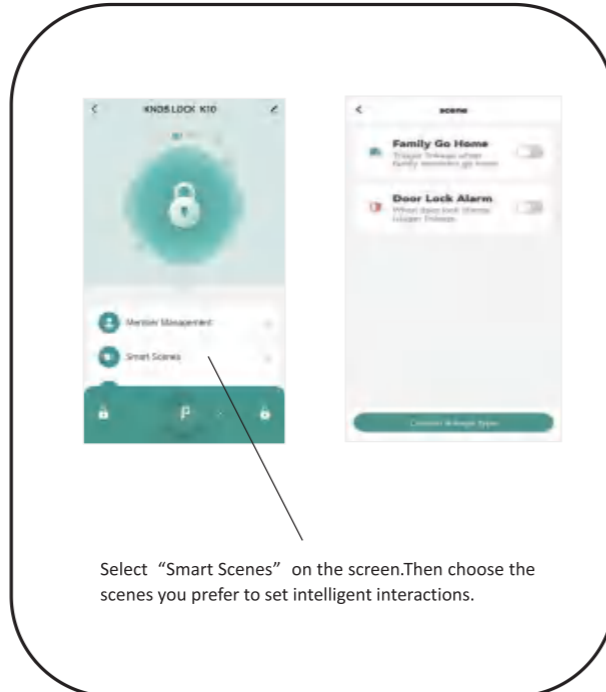
Unlock: Hold and drag the icon "🔒" to the icon "🔓".



Lock: Hold and drag the icon "🔒" to the icon "🔓".

19

◆ Create Smart Scenes

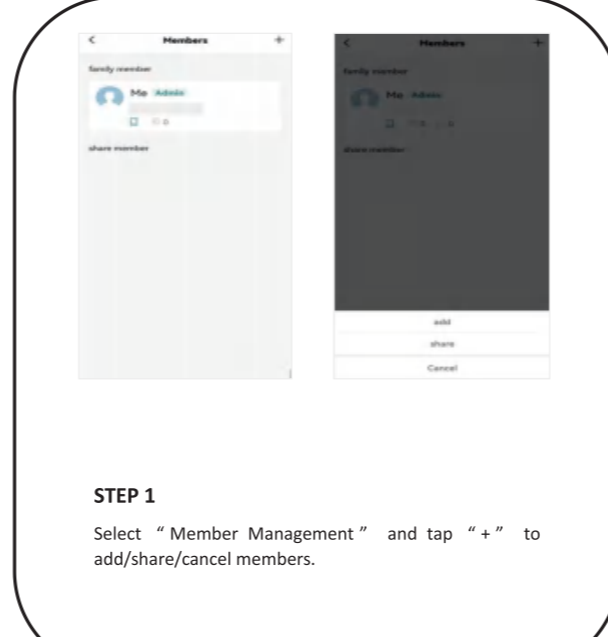


Select "Smart Scenes" on the screen. Then choose the scenes you prefer to set intelligent interactions.

20

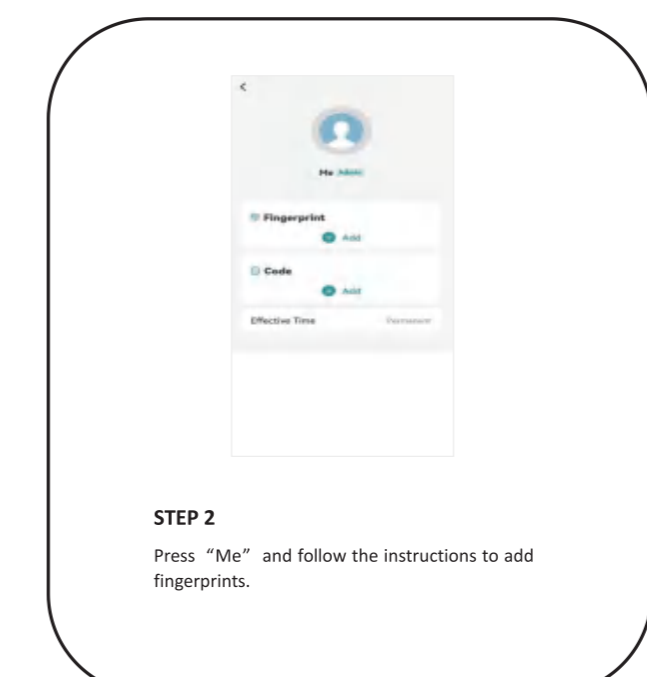
◆ Member Management and Fingerprints

Input



STEP 1
Select "Member Management" and tap "+" to add/share/cancel members.

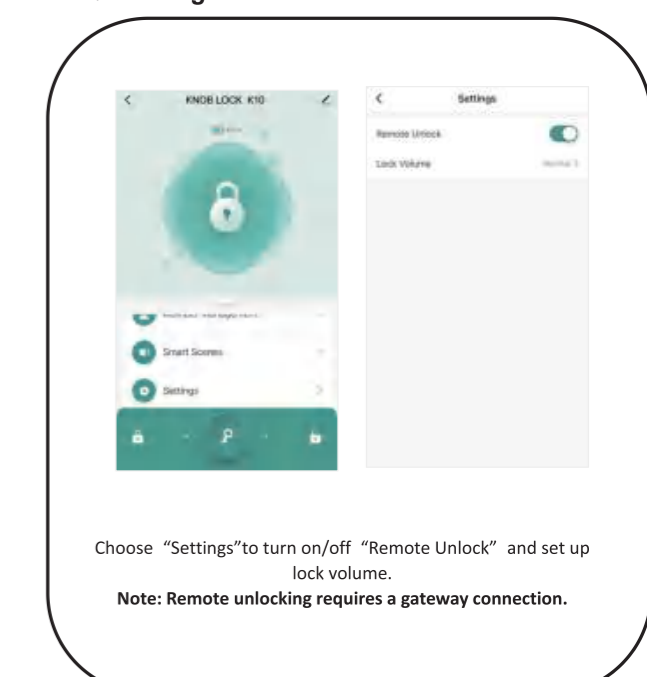
21



STEP 2
Press "Me" and follow the instructions to add fingerprints.

22

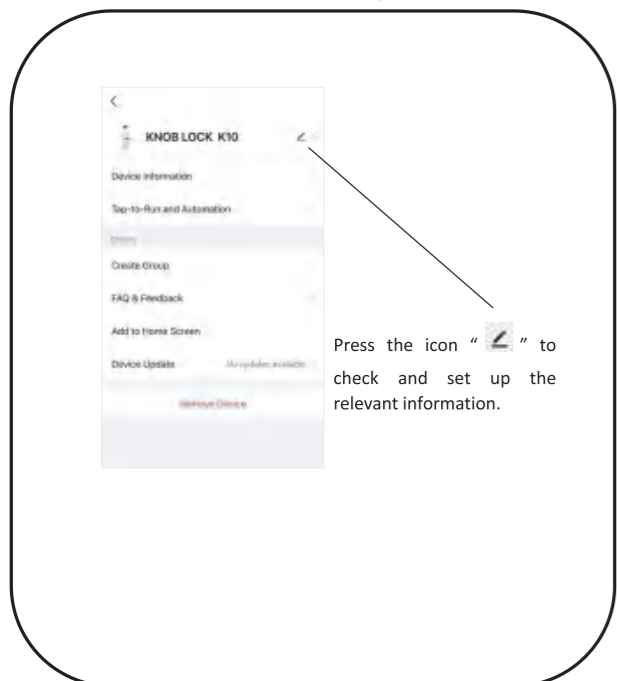
◆ Setting



Choose "Settings" to turn on/off "Remote Unlock" and set up lock volume.
Note: Remote unlocking requires a gateway connection.

23

◆ Device Information Set Up



Press the icon "🔧" to check and set up the relevant information.

24

◆ SPECIFICATIONS

Technical Parameters	
Name	Parameter Description
USB	Type-C/5V2A
Fingerprints max	20
Low power warning	4.8V±0.2
Voltage range	3.4~4.2V
Stand-by current	<90µA
Working current	<500mA
Unlock time	≈1.5sec
Working temperature	23°F~131°F (-5°C~55°C)

25

◆ FCC WARNING

Any Changes or modifications not expressly approved by the party responsible for compliance could void the user's authority to operate the equipment.

Note: This equipment has been tested and found to comply with the limits for a Class B digital device, pursuant to part 15 of the FCC Rules. These limits are designed to provide reasonable protection against harmful interference in a residential installation. This equipment generates uses and can radiate radio frequency energy and, if not installed and used in accordance with the instructions, may cause harmful interference to radio communications. However there is no guarantee that interference will not occur in a particular installation. If this equipment does cause harmful interference to radio or television reception, which can be determined by turning the equipment off and on the user is encouraged to try to correct the interference by one or more of the following measures:

- Reorient or relocate the receiving antenna.
- Increase the separation between the equipment and receiver.
- Connect the equipment into an outlet on a circuit different from that to which the receiver is connected -Consult the dealer or an experienced radio/TV technician for help.

This device complies with part 15 of the FCC Rules. Operation is subject to the following two conditions: (1) This device may not cause harmful interference, and (2) this device must accept any interference received, including interference that may cause undesired operation.

26