



SMD CERAMIC ANTENNA

Data Sheet

TS3216E245K06

For 2400-2484MHz
3.2x1.6mm [EIA1206]

Manufacturer: Shenzhen FCY acoustics Co., Ltd
9015, Baode Industrial Center, Lixin South Road, Huaide Community, Fuyong
Street, Shenzhen, Guangdong, China

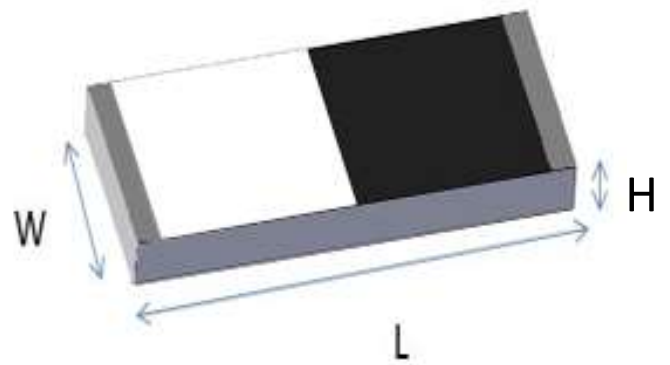
FEATURES

- Light weight,compact
- Wide bandwidth,lowcost
- Built-in antenna with high gain

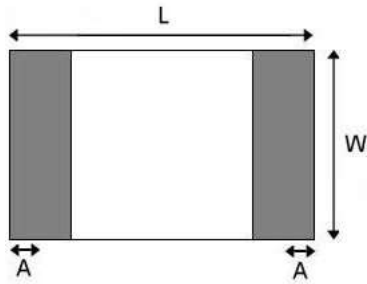
APPLICATIONS

- Bluetooth
- IEEE802.11g/b
- Zigbee systems,etc...

SHAPES AND DIMENSIONS Dimensions in mm



TS3216E245K06



L	W	A	H
3.10±0.10	1.55±0.10	0.40±0.20	0.50±0.10

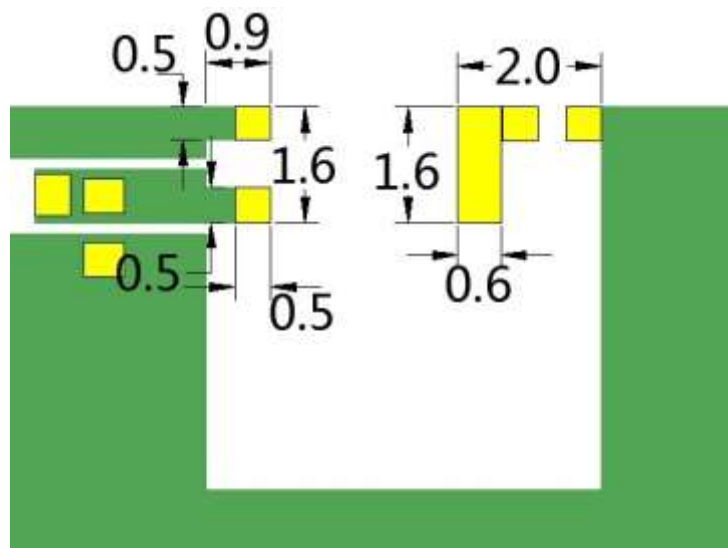


ELECTRIC SPECIFICATIONS

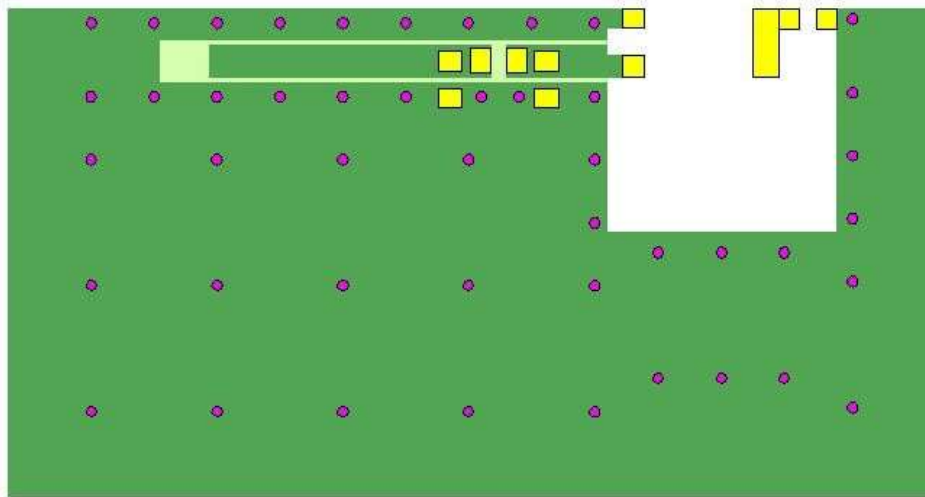
Product type	TS3216E245K06
Center Frequency Range	2450MHZ
Input Impedance	50 Ω

PART NUMBERING SYSTEM

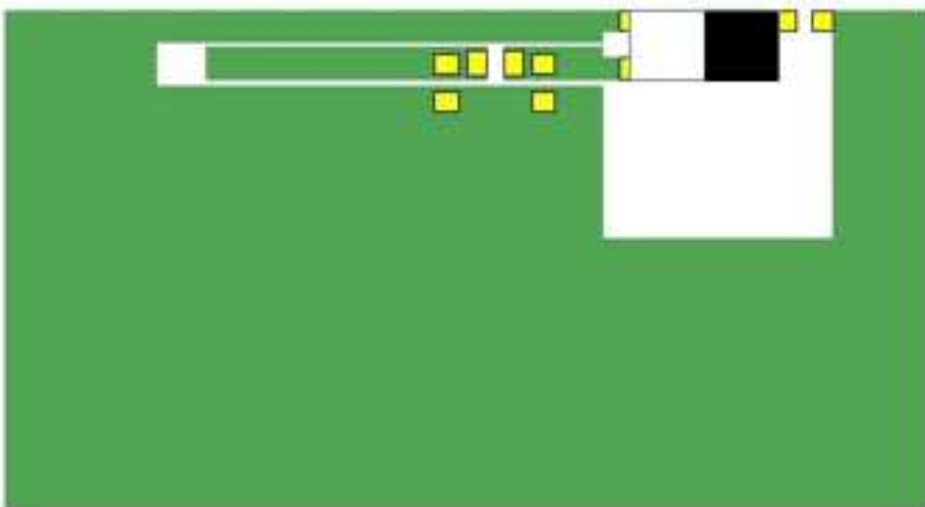
TS - 3216 - E - 2450 - K - 06
 Brand Dimension Material Frequency Feeding mode Type



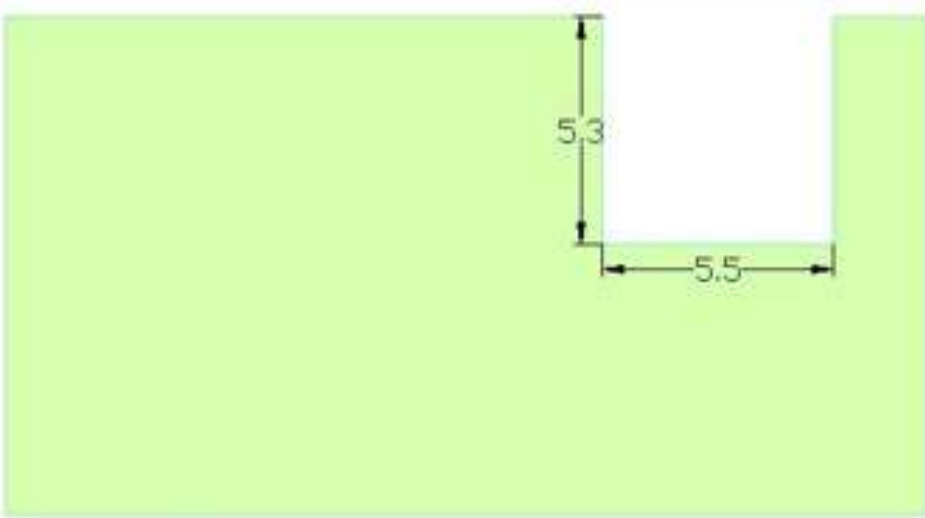
■ EVALUATION BOARD



-  PAD
-  Bottom Copper
-  TOP Copper
-  VIA



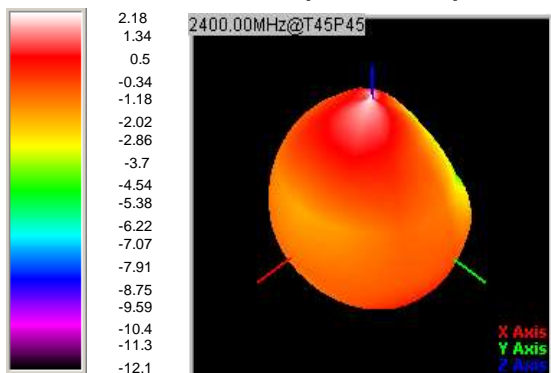
-  Antenna
-  PAD
-  Bottom Copper
-  TOP Copper



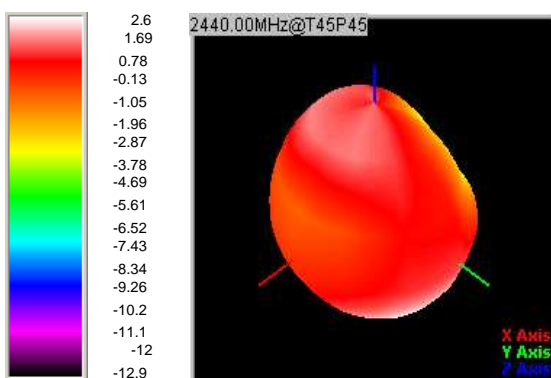
RADIATION PATTERNS

2.4GHz BAND

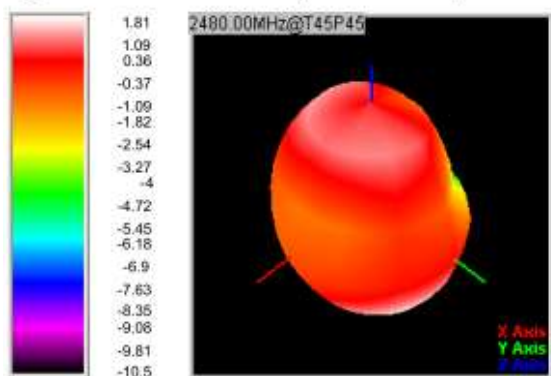
3D Gain Pattern (2400 MHz)



3D Gain Pattern (2440 MHz)



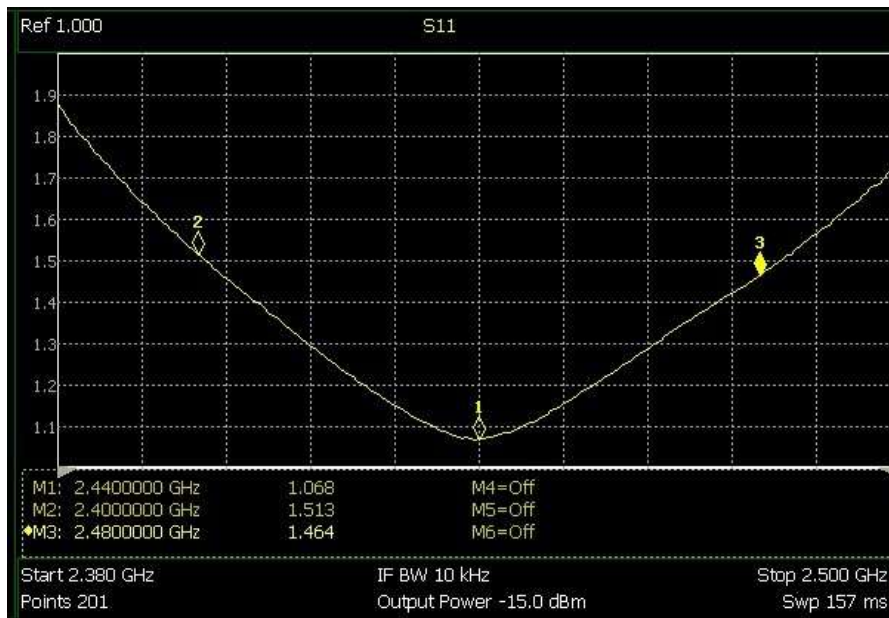
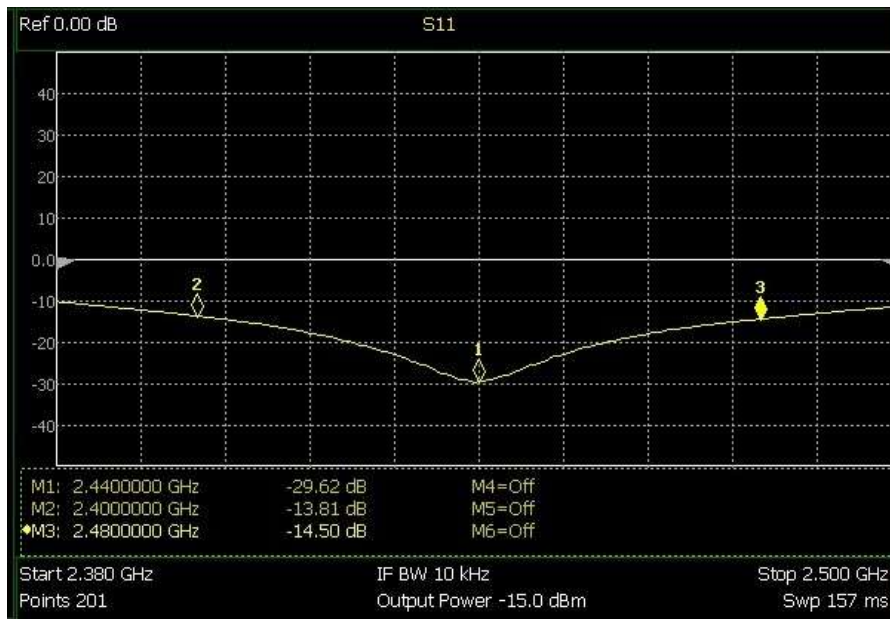
3D Gain Pattern (2480 MHz)



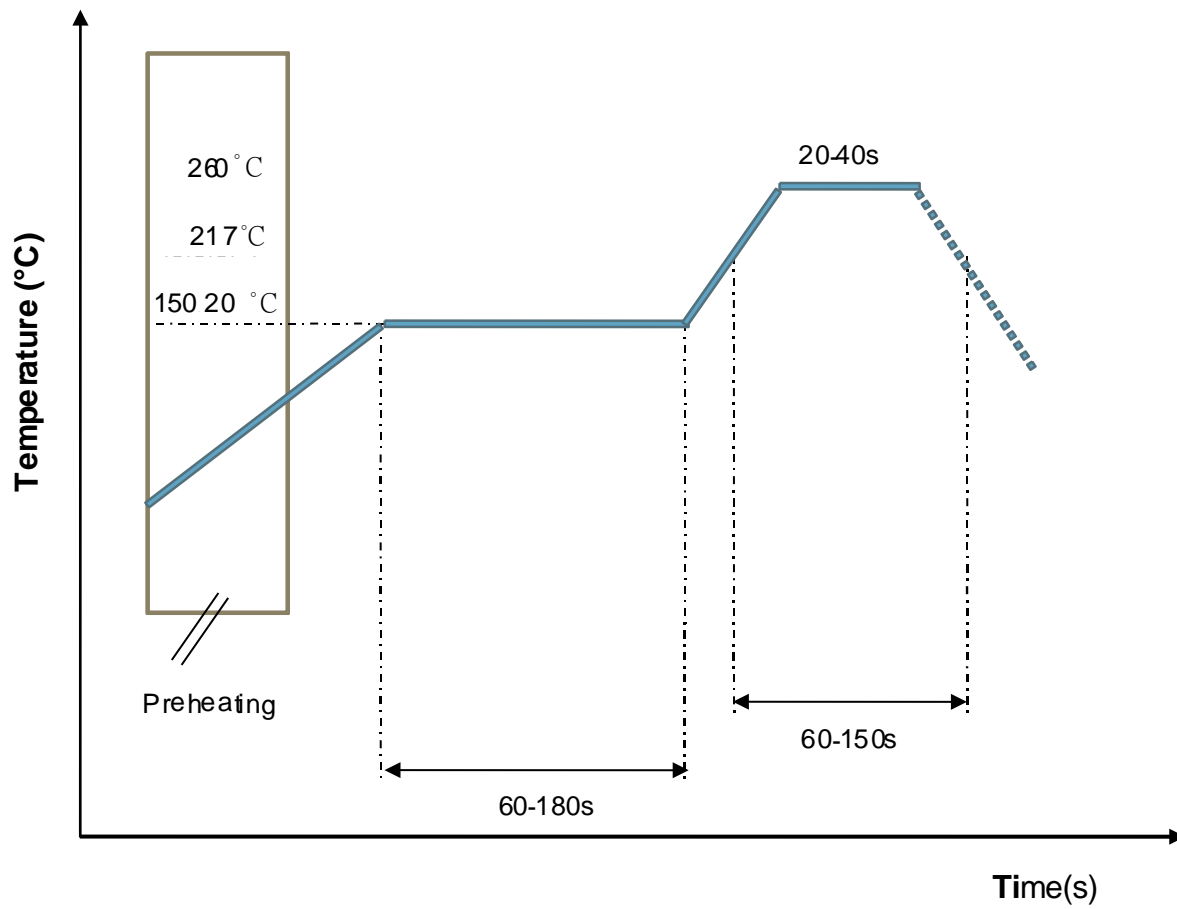
Freq (MHz)	Effi (%)	Gain (dBi)
2400	65.03	2.18
2410	70.29	2.23
2420	71.62	2.35
2430	72.59	2.54
2440	74.81	2.6
2450	72.33	2.47
2460	71.03	2.32
2470	63.68	2.04
2480	61.42	1.81
2490	61.15	1.75
2500	61.09	1.69

FREQUENCY CHARACTERISTICS

EFFICIENCY AND VSWR

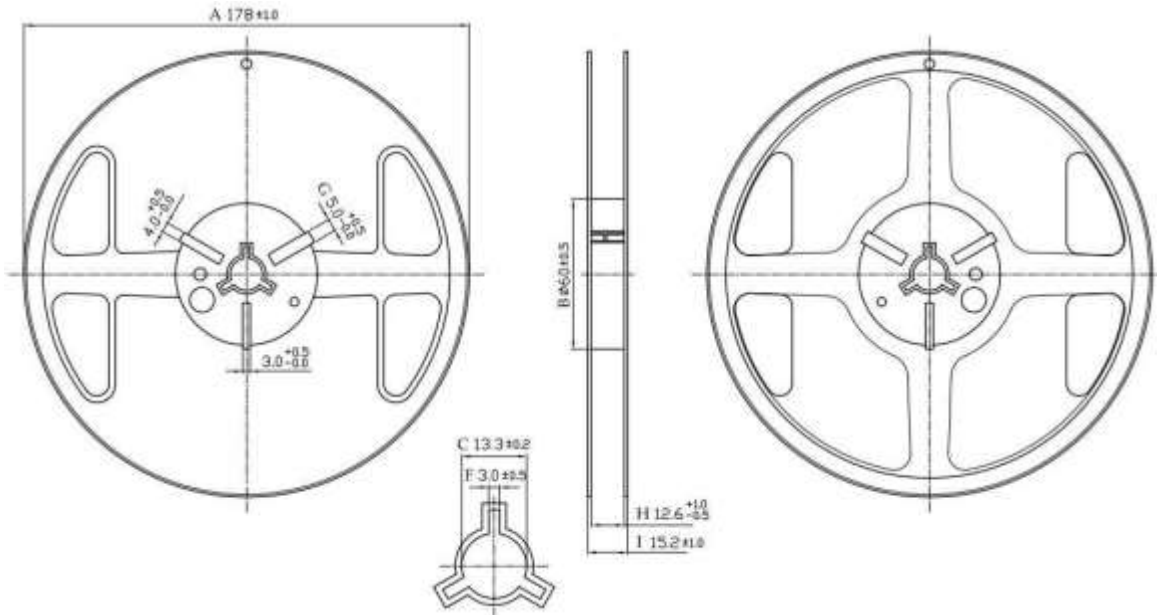


RECOMMENDED REFLOW PROFILE

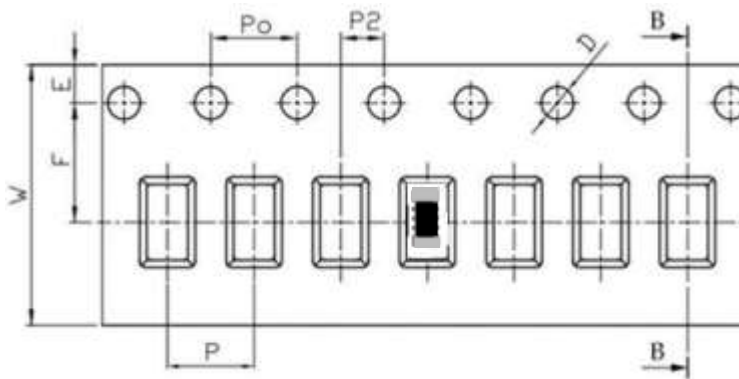


PACKAGING STYLE

REEL DIMENSIONS



TAPE DIMENSIONS



Feature	Specifications	Tolerances
W	8.00	±0.30
P	4.00	±0.10
E	1.75	±0.10
F	3.50	±0.10
P2	2.00	±0.10
D	1.50	+0.10 -0.00
P0	4.00	±0.10
10P0	40.00	±0.20

Typing Quantity: 5000 pieces per 7" reel

Order Information

Device	Package	Net Weight	Carrier	Quantity	HSF Status
TS3216E245K06	3216	0.0089g	Tape&Reel	5000pcs	RoHS compliant

Revision history

Date	Revision	Description of changes
2018-11-5	1.0	First Version
2022- 8-5	1.1	Update the package information

The contents of this data sheet are subject to change without notice.
Please confirm the specifications and delivery conditions when placing your order.

© Copyright 2015, All rights reserved