



Form Designs Australia Pty Ltd
Unit 11, 20 Sustainable Avenue
Bibra Lake, WA 6163
PO Box 43, Applecross, WA 6953

P (08) 9418 3311
E enquiries@formdesigns.com.au
W www.formdesigns.com.au
ABN 82 022 029 304
RSP 99499

CLIENT	SEE I2I PTY LTD (MIKE WINLO & GRAHAM BARRETT)
PROJECT	VIDEO CONFERENCING DEVICE
PROJECT CODE	MGVC01

ELECTRONIC SEQUENCE DOCUMENT

REV	DATE	DESCRIPTION	BOM REF
IR	09/04/2021	DOCUMENT INITIAL RELEASE	
A			
B			
C			
D			
E			
F			
G			
H			

AUTHOR	DATE	CHECKED	DATE
G. LEE	09/04/2021		/ /

© COPYRIGHT THE CONTENTS OF THIS DOCUMENT ARE SUBJECT TO COPYRIGHT LAW. NO PART OF THIS DOCUMENT IS TO BE COPIED NOR THE CONTENTS THEREOF IMPARTED TO A THIRD PARTY NOR BE USED FOR ANY PURPOSE, WITHOUT THE PRIOR WRITTEN PERMISSION OF THE OWNER.

DISCLAIMER THE CONTENTS OF THIS DOCUMENT HAVE BEEN CHECKED BY ITS AUTHOR AND ALL NECESSARY STEPS HAVE BEEN TAKEN TO ENSURE AN EXCELLENT RESULT. HOWEVER, FORM DESIGNS CANNOT BE HELD RESPONSIBLE FOR ANY DISCREPANCIES WHICH MAY OCCUR DURING THE PRODUCTION PROCESS.

CONTROLLED DOCUMENT APPROVED	DATE	SIGN
	DD / MM / YYYY	x



Form Designs Australia Pty Ltd
Unit 11, 20 Sustainable Avenue
Bibra Lake, WA 6163
PO Box 43, Applecross, WA 6953

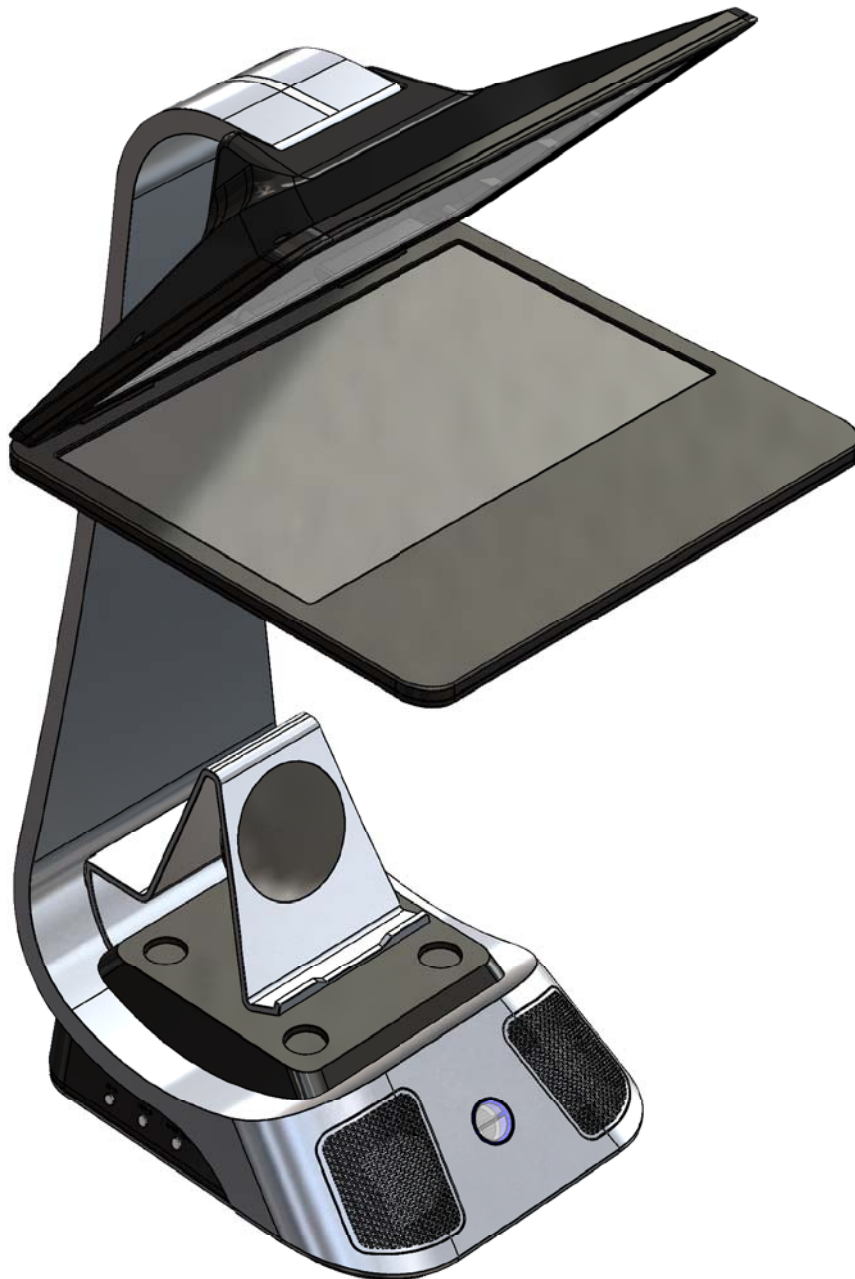
P (08) 9418 3311
E enquiries@formdesigns.com.au
W www.formdesigns.com.au
ABN 82 022 029 304
RSP 99499

TABLE OF CONTENTS

VIDEO CONFERENCING DEVICE	3
ELECTRONIC COMPONENTS	4
ELECTRONIC COMPONENTS	5
ELECTRONIC COMPONENTS	6
ELECTRONIC COMPONENTS	7
ELECTRONIC COMPONENTS	8
POWER / ON BUTTON	9
LED: DESK / FACE LIGHT.....	10
CONTROL BUTTONS	11
CONTROL BUTTONS	12
WIRELESS PHONE CHARGING	13

VIDEO CONFERENCING DEVICE

The Video Conferencing Device has been designed to provide an eye-to-eye video conferencing experience. The Camera is located behind the mirrored glass which reflects the screen on the bottom. This provides the experience of looking at the person on the screen whilst also looking directly into the camera behind the glass.

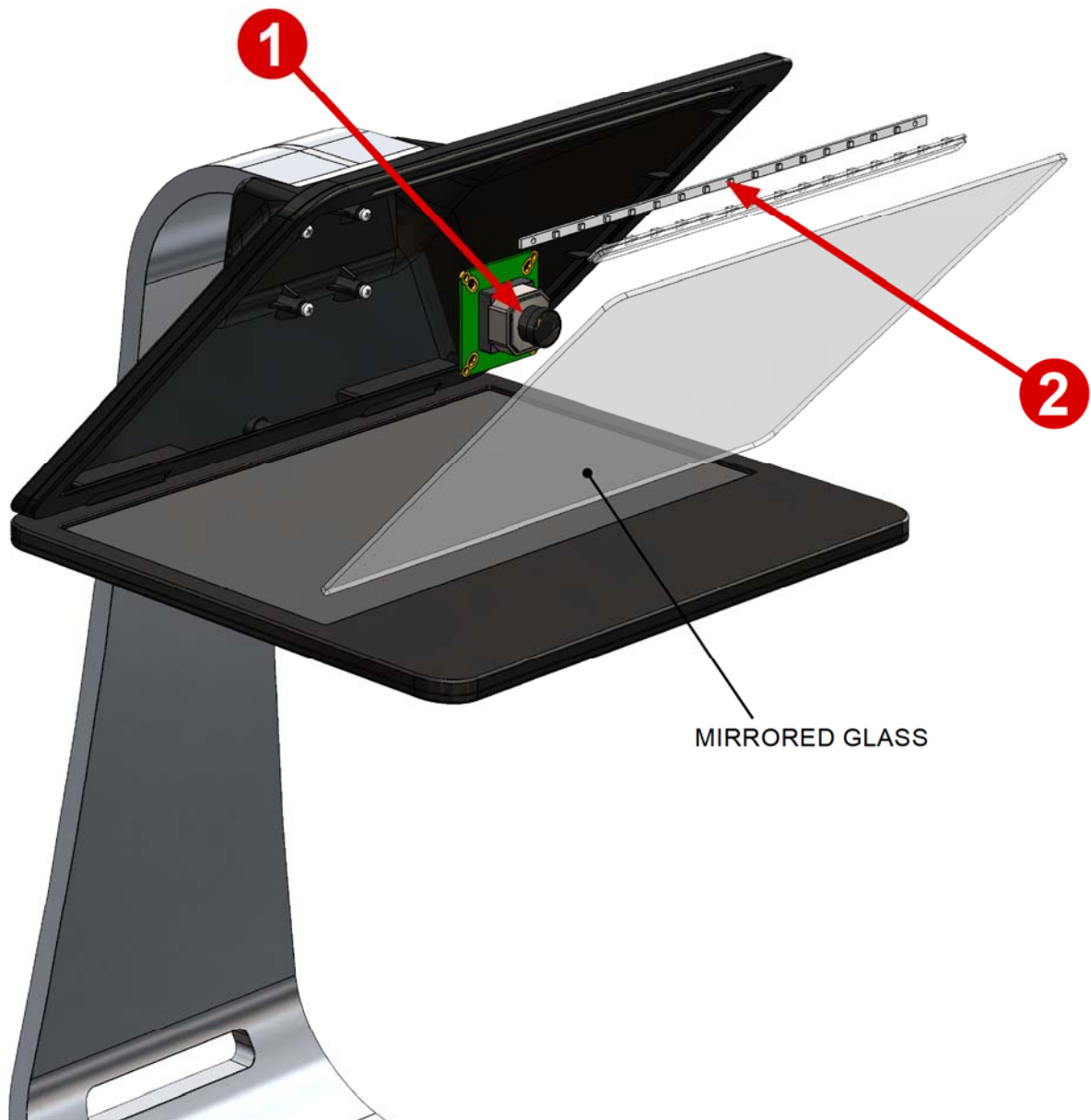


ELECTRONIC COMPONENTS

CAMERA UNIT

The Camera unit is a top part of the Media unit.

1. CAMERA
2. LED STRIP

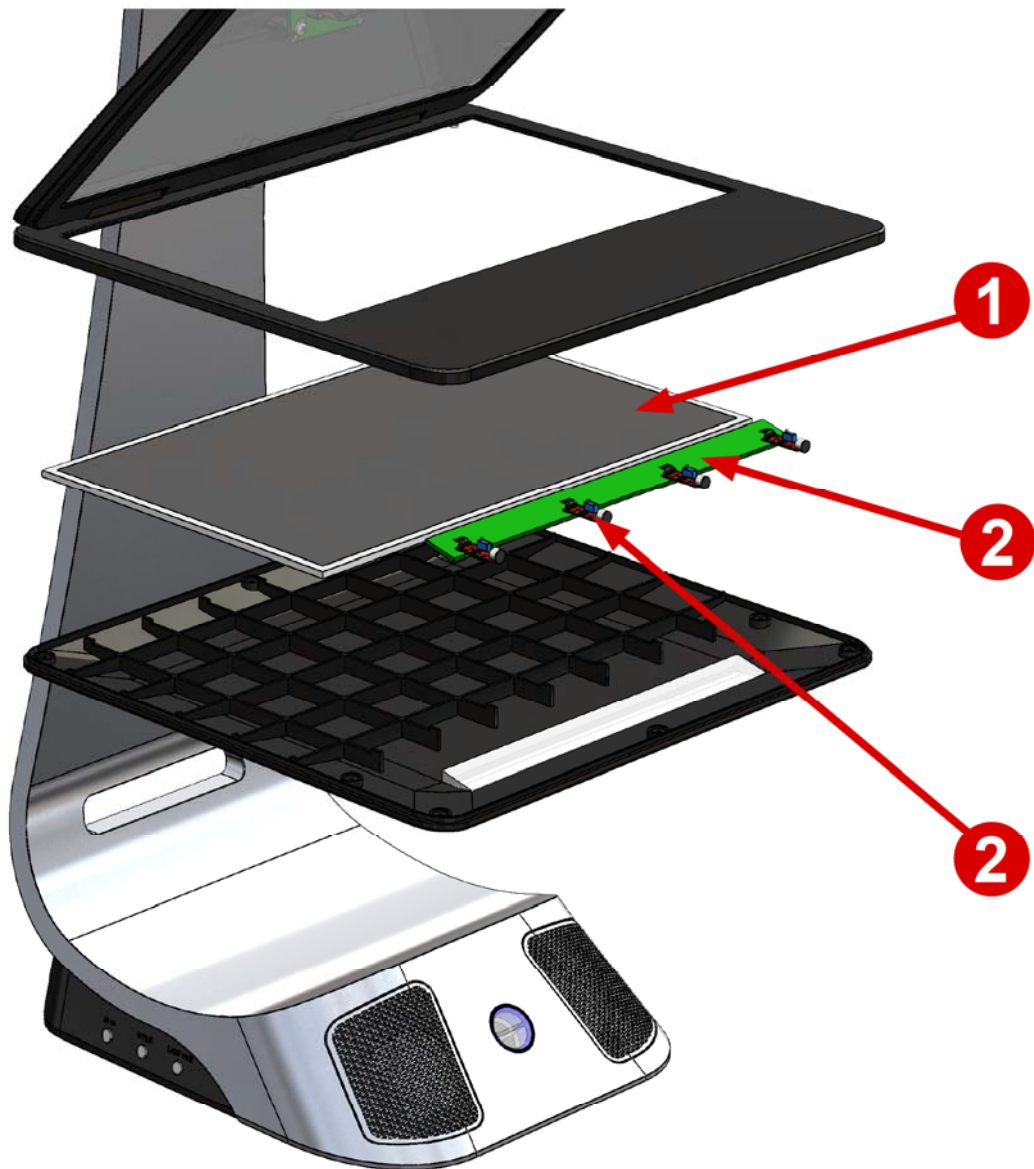


ELECTRONIC COMPONENTS

SCREEN UNIT

The Screen unit is a bottom part of the Media unit.

1. LCD SCREEN
2. LED STRIPS
3. MICROPHONES X 4

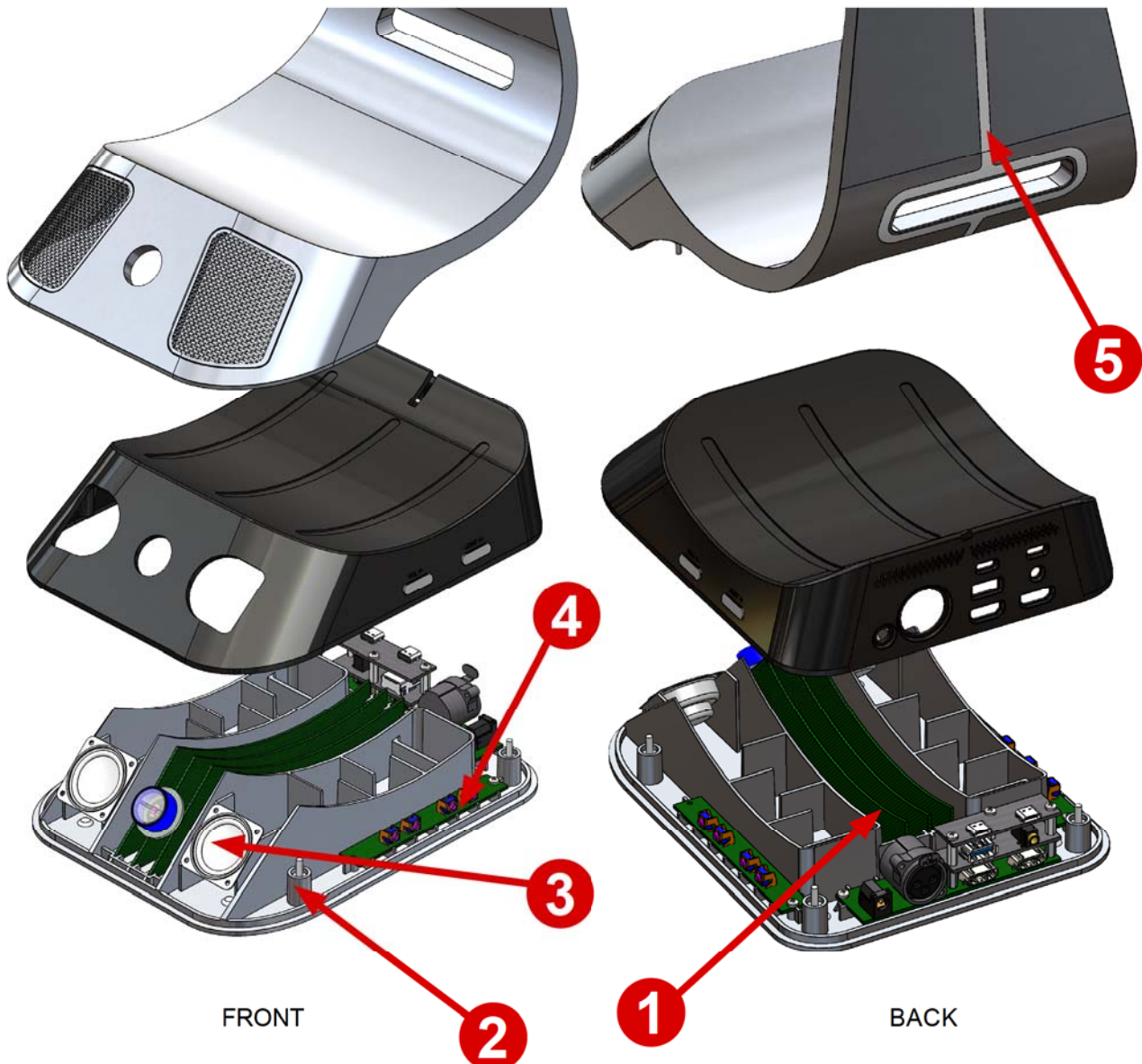


ELECTRONIC COMPONENTS

STAND UNIT

The Stand unit is the base of the device which controls the device.

1. PCB
2. SPEAKERS
3. POWER BUTTON
4. CONTROL BUTTONS
5. CABLE (LINKS TO MEDIA UNIT)

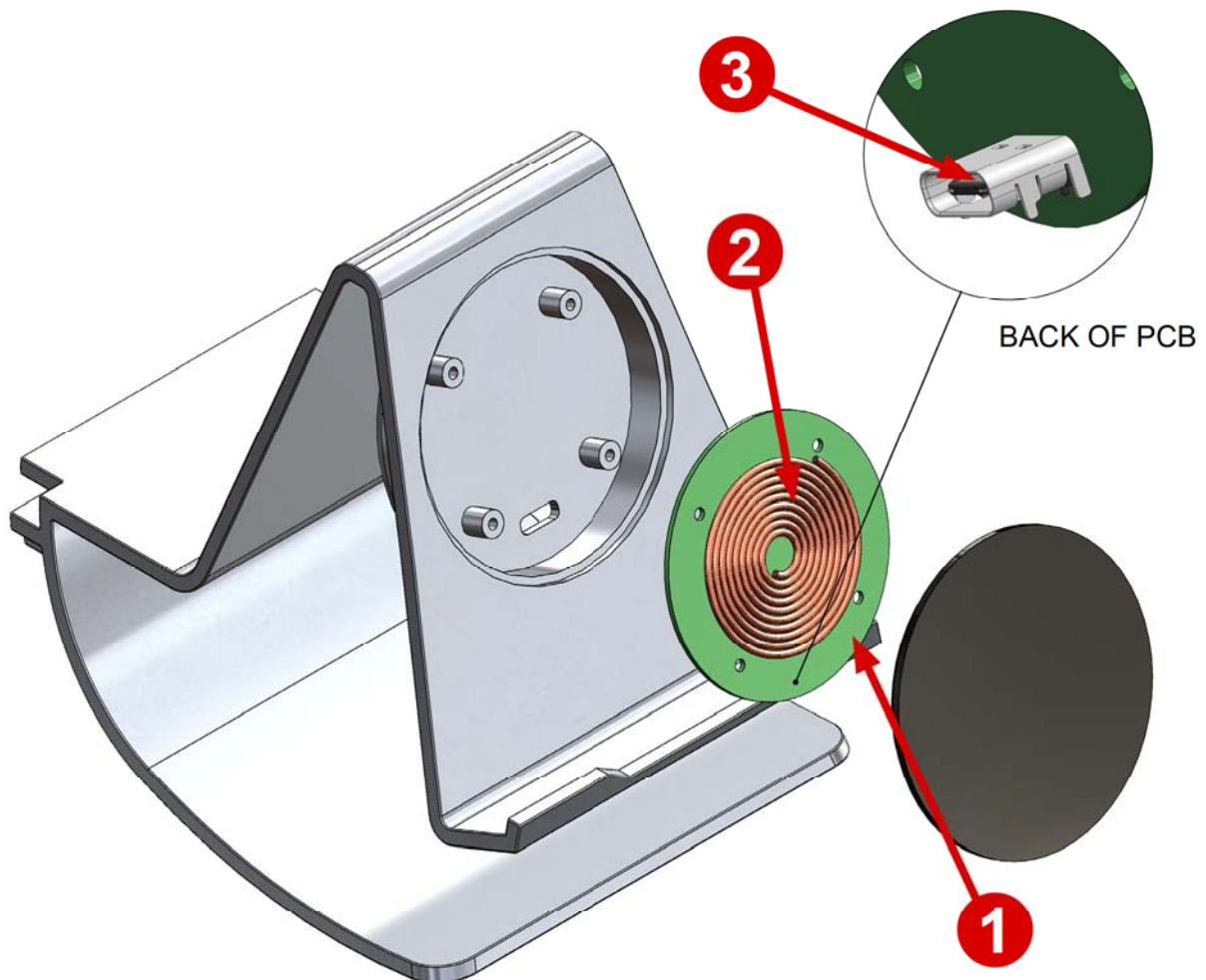


ELECTRONIC COMPONENTS

PHONE HOLDER

This unit is an accessory that can be mounted on the main device.

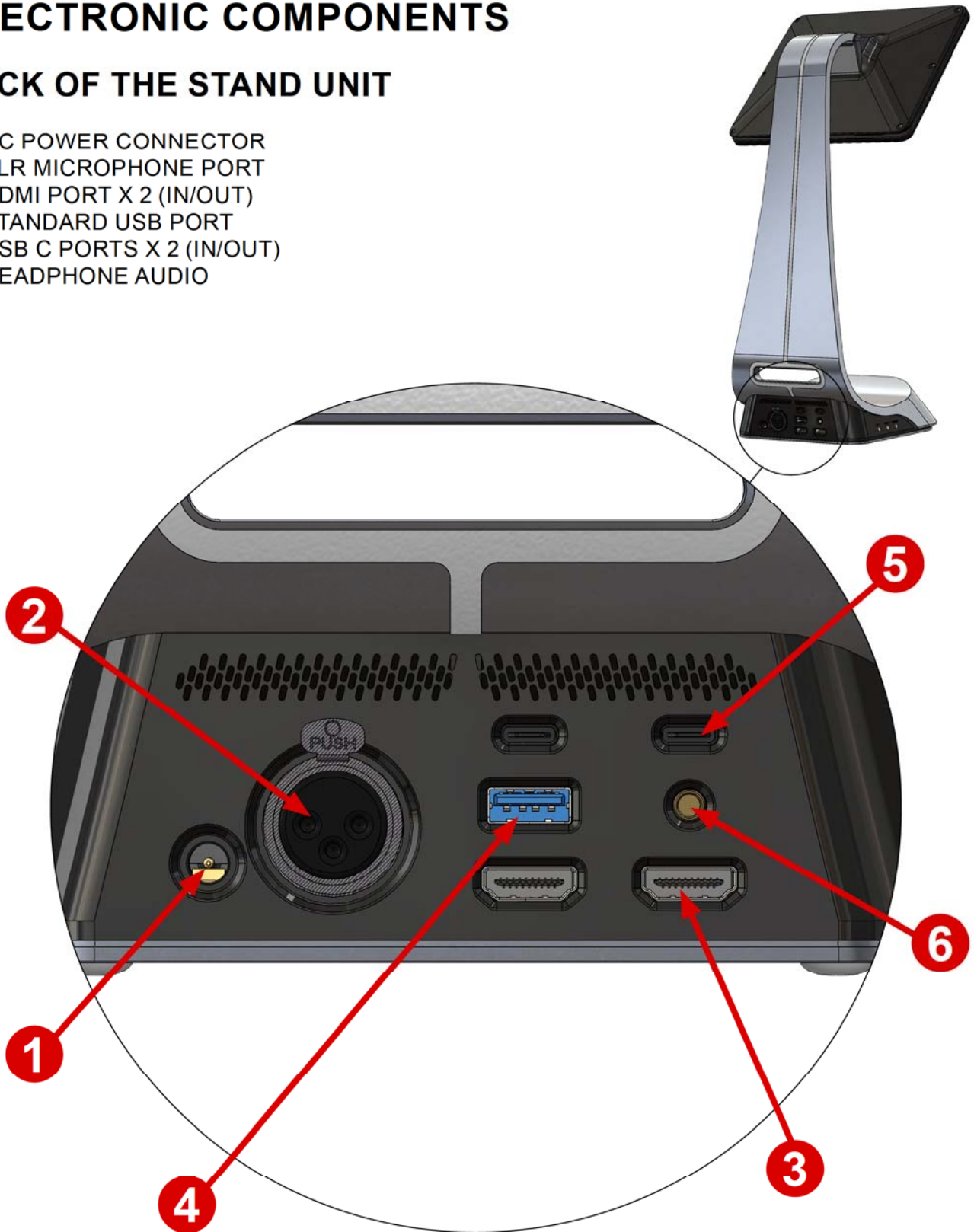
1. PCB
2. CHARGING COIL
3. USB C CHARGING PORT



ELECTRONIC COMPONENTS

BACK OF THE STAND UNIT

1. DC POWER CONNECTOR
2. XLR MICROPHONE PORT
3. HDMI PORT X 2 (IN/OUT)
4. STANDARD USB PORT
5. USB C PORTS X 2 (IN/OUT)
6. HEADPHONE AUDIO



POWER / ON BUTTON

The device is powered by a DC Power Cable which is plugged in and turns on/off with the Power Button. The Power Button has an LED inside to indicate the device status.

POWER BUTTON FUNCTIONS:

- QUICK ONE PRESS - POWER ON
- LONG (3 SEC) PRESS - POWER OFF
- QUICK PRESS ON INCOMING CALL - VIDEO CALL STARTS

POWER BUTTON LIGHTS:

- **BLUE** - ON
- **GREEN** - ON VIDEO CALL
- **GREEN** (FLASHING) - INCOMING CALL



Example: DC Power Adaptor



LED: DESK / FACE LIGHT

2 (two) LED strips are located on the Media unit; one under the Screen Housing to be used as a desk light, and one on top of the Camera Housing which is used as a face light.

- Top Light ON: only when screen is down (open) + the video call/conference is active.
- Bottom Light ON: when screen is up (closed).

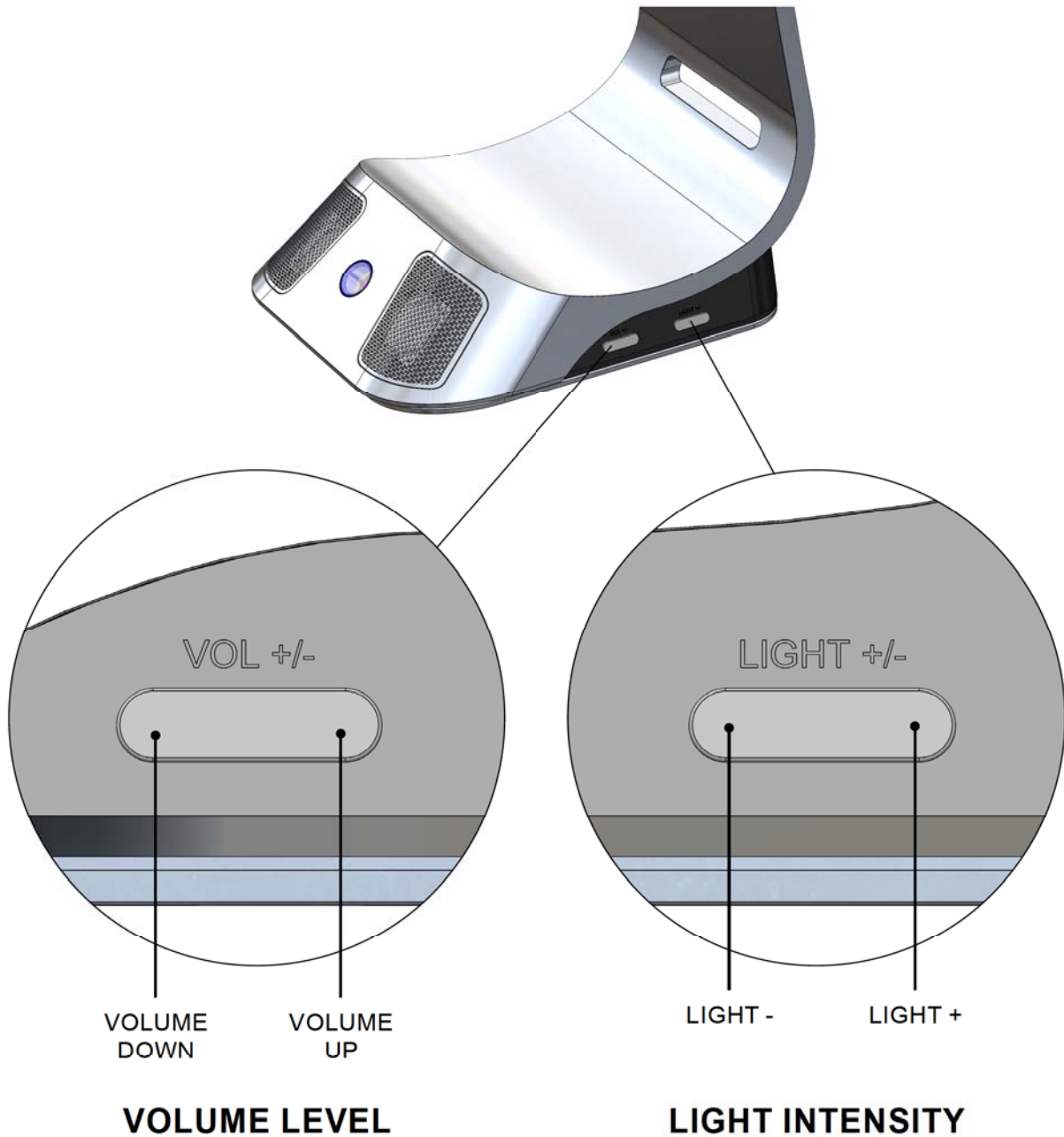


SCREEN OPEN
TOP LIGHT (FACE LIGHT)

SCREEN CLOSED
BOTTOM LIGHT (DESK LIGHT)

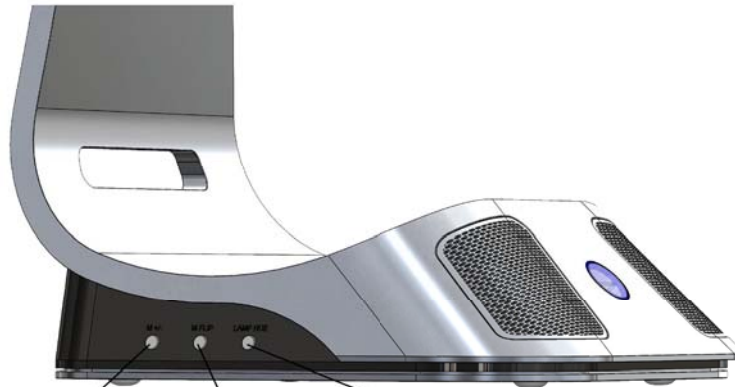
CONTROL BUTTONS

On the right side of the device there are 2 (two) control buttons.



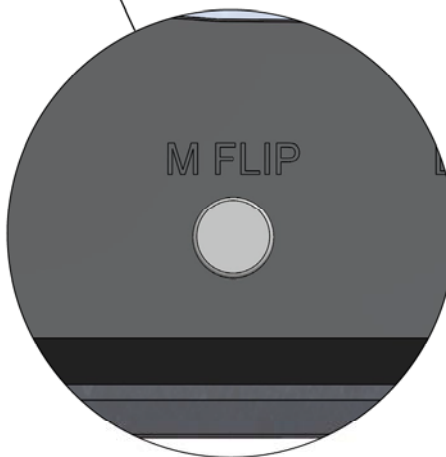
CONTROL BUTTONS

On the left side of the device there are 3 (three) control buttons.

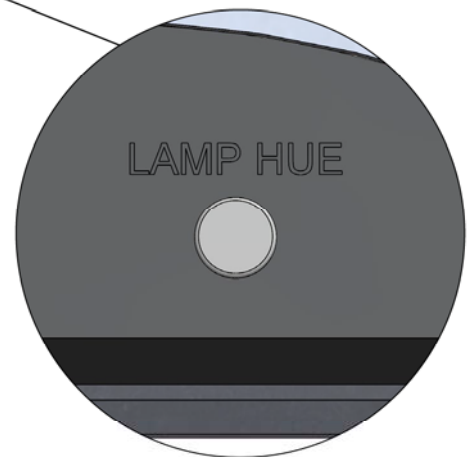


MONITOR BRIGHTNESS

There (3) levels of monitor brightness



MONITOR MIRROR VIEW

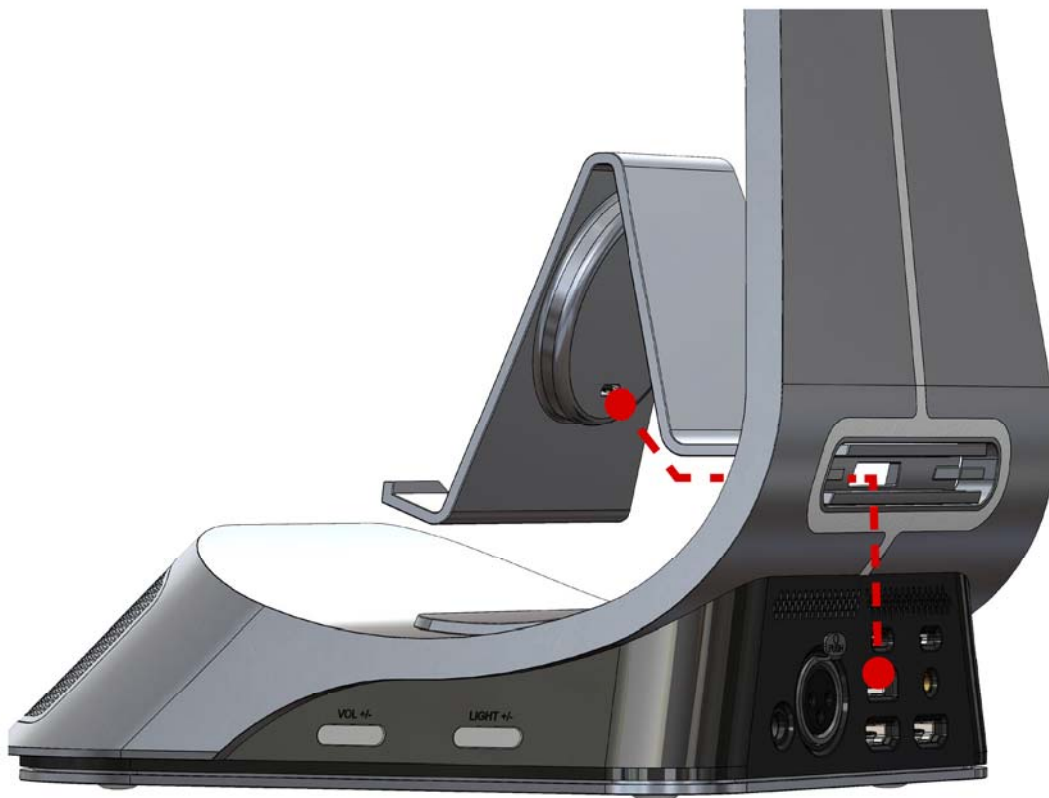


LAMP HUE

Cold/white light to change colour from cool white to warm white.

WIRELESS PHONE CHARGING

The Phone Holder has a wireless phone charging function which can be mounted on the device and powered with a cable.



FCC Statement

This equipment has been tested and found to comply with the limits for a Class B digital device, pursuant to part 15 of the FCC Rules. These limits are designed to provide reasonable protection against harmful interference in a residential installation. This equipment generates, uses and can radiate radio frequency energy and, if not installed and used in accordance with the instructions, may cause harmful interference to radio communications. However, there is no guarantee that interference will not occur in a particular installation. If this equipment does cause harmful interference to radio or television reception, which can be determined by turning the equipment off and on, the user is encouraged to try to correct the interference by one or more of the following measures:

- Reorient or relocate the receiving antenna.
- Increase the separation between the equipment and receiver.
- Connect the equipment into an outlet on a circuit different from that to which the receiver is connected.
- Consult the dealer or an experienced radio/TV technician for help.

Caution: Any changes or modifications to this device not explicitly approved by manufacturer could void your authority to operate this equipment.

This device complies with part 15 of the FCC Rules. Operation is subject to the following two conditions: (1) This device may not cause harmful interference, and (2) this device must accept any interference received, including interference that may cause undesired operation.

RF Exposure Information

This equipment complies with FCC radiation exposure limits set forth for an uncontrolled environment. This equipment should be installed and operated with minimum distance 20cm between the radiator and your body.