

TEST REPORT

For

Thermal Camera

**Model Number: TIMNBLT319, TIMNBLT325, TIMNBLT619,
TIMNBLT625**

FCC ID: 2BGKL-TIMNBLT

Test Laboratory : Shenzhen Academy of Metrology and Quality Inspection
Site Location : No.4 Tongfa Rd., Xili, Nanshan, Shenzhen, China
Tel : 0086-755-86928965
Fax : 0086-755-86009898-31396
Web : www.smq.com.cn
Email : emcrf@smq.com.cn

The "important statement" on the back of report's homepage is an element of the report, and any copy that does not contain the "important statement" is incomplete.

重要声明

Important statement

1. 本院是深圳市人民政府依法设置的产品质量监督检验机构，系社会公益型非营利性技术机构，为各级政府执法部门进行监督管理提供技术支持和接受社会各界的委托检验。

SMQ is a legal non-profit technical institute established by Shenzhen Municipal Government to undertake the quality supervision and inspection of products, and to provide technical support to relevant supervision and administration and also conduct commission test from the society.

2. 本院保证检验的科学性、公正性和准确性，对检验的数据负责，并对委托单位所提供的样品和技术资料保密。

SMQ is committed to assuring the scientificness, impartiality and accuracy of all tests carried out, responsibility for test data gained, and keeping confidential of all test samples and technical documents provided.

3. 抽样按照本院程序文件《抽样程序》和相应产品的检验细则的规定执行。

The sampling should be carried out according to the "sampling procedure" defined in the Procedure Document and relevant testing specifications.

4. 报告/证书无主检、审核、批准人签字，或涂改，或未盖本院报告/证书专用章及骑缝章无效。未经本院许可，不得部分复印、摘用或篡改本报告/证书内容。复印证书/报告未重新加盖本院证书/报告专用章无效。

Any report/certificate having not been signed by relevant responsible engineer, reviewer or authorized approver, or having been altered without authorization, or without both the Dedicated Report/Certificate Seal and its across-page seal is deemed to be invalid. Copying or excerpting portion of, or altering the content of the report/certificate is not permitted without the written authorization of SMQ. Any copy of certificates/reports without the Dedicated Report/Certificate Seal is deemed to be invalid.

5. 送样委托检验结果仅对来样有效：委托检验的样品、样品及委托方信息均由委托方提供，本院不对样品的代表性、真实性及信息的完整性和准确性负责。

The test results presented in the report apply only to the tested sample. The customer provides thier own information, the sample, and the sample information. Thus, SMQ assumes no responsibility for representativeness , authenticity of the sample and validity and accuracy of the information..

6. 未经检验机构同意，样品委托人不得擅自使用检验结果进行不当宣传。

Any use of SMQ test result for advertisement of the tested material or product must be approved in writing by SMQ.

7. 无 CMA 标志的报告/证书，仅作为科研、教学或内部质量控制之用。含粤字编号的 CAL 标志仅适用于产品标准和判定标准。

The non-CMA report/certificate issued by SMQ is only permitted to be used for research, teaching or internal quality control. CAL logo with symbol "Yue" is only relevant to product standards and reference of standards.

8. 委托方对报告/证书有异议的，应于报告发出之日起十五日内向本院提出。政府行政管理部门下达的监督检查任务，受检方对报告/证书有异议的，应按政府行政管理部门文件规定及国家相关法律、法规进行。

Any objection to report/certificate issued by SMQ should be submitted to SMQ within 15 days after the issuance of the test. The mandatory inspection assigned by government administrative departments shall be carried out in accordance with the documents and regulations of the government administrative department and relevant national laws and regulations if inspected parties raise any objection to the inspection.

9. 报告/证书更改后，发出的电子版报告/证书、报告/证书的扫描件及传真件将不被追回，委托方有义务将更改后的报告/证书提供给使用原报告/证书的相关方。

SMQ is not responsible for recalling the electronic version of the original report/certificate when any revision is made to them. The applicant assumes the responsibility of providing the revised version to any interested party who uses them.

10. 只申领电子报告时，相关内容和效力以电子报告为准；电子报告和纸质报告同时申领时，电子报告仅作为纸质报告的副本，相关内容和效力以同编号纸质报告为准。

The relevant content and effectiveness is subject to the electronic version of the original report which was only applied for. When an electronic report and a paper report are applied for at the same time, the electronic report is only a copy of the paper report, and the relevant content and effectiveness is subject to the paper report.

11. 检验报告二维码具浏览和下载完整报告功能，是应委托方要求所设，该二维码及其复制图能使任何人扫描获取完整的检验报告电子版，本报告持有人如需限制他人经该二维码获取检验报告内容，应自行遮盖或消除检验报告及其复制件所附二维码，我院对委托方选择检验报告二维码功能所致的信息泄露概不负责（适用于附二维码报告）。

The QR code has the function of browsing and downloading complete report. Setting this function or not is chosen by the customer. The QR code and its copy enable anyone to scan and obtain the complete electronic version of the test report. Thus, if the owner of this report needs to restrict others from obtaining the content of the test report through the QR code, he shall cover or remove the QR code attached to the test report and its copies by himself. SMQ assumes no responsibility for the information leakage caused by the customer's selection of the QR code function of the test report (This clause applies to reports with QR code attached) .

投诉及报告/证书真伪查询电话

Complaint hotline : 400-900-8999 按 5

Email : complaint@smq.com.cn

Revision History

No	Date	Remark
V1.0	2024-7-5	Initial issue

TEST REPORT DECLARATION

Applicant : Hangzhou Shunli Optotech Co., Ltd.
Address : 3rd Floor, Building 2, No. 526 Binkang Road, Binjiang District,
Hangzhou, Zhejiang, China
Manufacturer : Hangzhou Shunli Optotech Co., Ltd.
Address : 3rd Floor, Building 2, No. 526 Binkang Road, Binjiang District,
Hangzhou, Zhejiang, China
EUT Description : Thermal Camera
Model No. : TIMNBLT319, TIMNBLT325, TIMNBLT619, TIMNBLT625
Trade mark : EMDI
Serial Number : -----
Date of EUT : 2024-4-24
Receive :
Test Standards: : FCC Part 15 Subpart B

The EUT described above is tested by Shenzhen Academy of Metrology and Quality Inspection EMC Laboratory to determine the maximum emissions from the EUT and ensure the EUT to be compliance with the immunity requirements of the EUT. Shenzhen Academy of Metrology and Quality Inspection EMC Laboratory is assumed full responsibility for the accuracy of the test results, unless they depend on the manufacturer information.

The test report is valid for above tested sample only and shall not be reproduced in part without written approval of the laboratory.

Project Engineer:  Date: 2024-7-3
(周芳媛 Zhou FangAi)
Checked by:  Date: 2024-7-4
(万晓婧 Wan XiaoJing)
Approved by:  Date: 2024-7-5
(林斌 Lin Bin)

TABLE OF CONTENTS

TEST REPORT DECLARATION	3
1 TEST RESULTS SUMMARY	5
2 GENERAL INFORMATION	6
2.1 Report Information	6
2.2 Laboratory Accreditation and Relationship to Customer	6
2.3 Measurement Uncertainty	7
3 PRODUCT DESCRIPTION	8
3.1 EUT Description	8
3.2 Block Diagram of EUT Configuration	8
3.3 Operating Condition of EUT	8
3.4 Support Equipment List	9
3.5 Test Conditions	9
3.6 Modifications	9
4 CONDUCTED EMISSION TEST	10
4.1 Test Standard and Limit	10
4.2 Test Procedure	10
4.3 Test Arrangement	10
4.4 Test Setup	10
4.5 Test Equipment	11
4.6 Test Condition	11
4.7 Test Data	11
5 RADIATED EMISSION TEST	13
5.1 Test Standard and Limit	13
5.2 Test Procedure	14
5.3 Test Arrangement	14
5.4 Test Setup	14
5.5 Test Equipment	15
5.6 Test Condition	15
5.7 Test Data	15

1 TEST RESULTS SUMMARY

Table 1 Test Results Summary

Test Items	Test Results
Conducted Emission	PASS
Radiated Emission	PASS

Remark: "N/A" means "Not applicable."

2 GENERAL INFORMATION

2.1 Report Information

This report is not a certificate of quality; it only applies to the sample of the specific product/equipment given at the time of its testing. The results are not used to indicate or imply that they are application to the similar items. In addition, such results must not be used to indicate or imply that SMQ approves recommends or endorses the manufacture, supplier or use of such product/equipment, or that SMQ in any way guarantees the later performance of the product/equipment.

The sample/s mentioned in this report is/are supplied by Applicant, SMQ therefore assumes no responsibility for the accuracy of information on the brand name, model number, origin of manufacture or any information supplied.

Additional copies of the report are available to the Applicant at an additional fee. No third part can obtain a copy of this report through SMQ, unless the applicant has authorized SMQ in writing to do so.

The lab will not be liable for any loss or damage resulting for false, inaccurate, inappropriate or incomplete product information provided by the applicant/manufacture.

2.2 Laboratory Accreditation and Relationship to Customer

The testing report were performed by the Shenzhen Academy of Metrology and quality Inspection EMC Laboratory (Guangdong EMC compliance testing center), in their facilities located at NETC Building, No.4 Tongfa Rd., Xili, Nanshan, Shenzhen, China. At the time of testing, Laboratory is accredited by the following organizations:

China National Accreditation Service for Conformity Assessment (CNAS) accredits the Laboratory for conformance to FCC standards, EMC international standards and EN standards. The Registration Number is CNAS L0579.

The Laboratory is Accredited Testing Laboratory of FCC with Designation number CN1165 and Site registration number 582918.

The Laboratory is registered to perform emission tests with Innovation, Science and Economic Development (ISED), and the registration number is 11177A.

The Laboratory is registered to perform emission tests with VCCI, and the registration number are C-20048, G20076, R-20077, R-20078 and T-20047.

The Laboratory is Accredited Testing Laboratory of American Association for Laboratory Accreditation (A2LA) and certificate number is 3292.01.

2.3 Measurement Uncertainty

Conducted Emission for Mains

AMN

$U = 2u_c (V) = 3.74 \text{ dB } k = 2 \text{ (9 kHz -150 kHz)}$

$U = 2u_c (V) = 3.34 \text{ dB } k = 2 \text{ (0.15 MHz -30 MHz)}$

Radiated Emission

$U = 2u_c (E) = 4.26 \text{ dB } k = 2 \text{ (Below 1GHz)}$

$U = 2u_c = 4.64 \text{ dB } k = 2 \text{ (1GHz~6GHz)}$

$U = 2u_c = 5.08 \text{ dB } k = 2 \text{ (6GHz~40GHz)}$

3 PRODUCT DESCRIPTION

NOTE: The extreme test conditions for temperature and antenna gain were declared by the manufacturer.

3.1 EUT Description

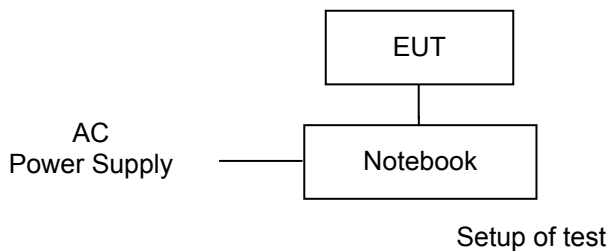
- Operating voltage : 3.6 Vdc (Low)/3.8 Vdc (Normal)/4.2 Vdc (Max)
- Test voltage : 120 Vac/60 Hz
- Software Version : V2.630.0000000.0.R.240427
- Hardware Version : 26_1300
- Frequency : 2.4GWiFi:2412MHz~2462MHz
- Type(s) of Modulation : DSSS (DBPSK, DQPSK, CCK) for 802.11b
OFDM (BPSK, QPSK, 16QAM, 64QAM) for 802.11g/n
- Antenna Type : 2.4G WiFi: IFA -0.588 dBi

Remark: The product differences are as follows, and the others are the same.

Model	Effective Pixel (Thermal Imaging Sensor)	Focal Length
TIMNBLT319	384×288	19mm
TIMNBLT325		25mm
TIMNBLT619	640×512	19mm
TIMNBLT625		25mm

Unless otherwise specified, the model TIMNBLT319 was chosen as the representative model to perform all the tests.

3.2 Block Diagram of EUT Configuration



3.3 Operating Condition of EUT

Test mode 1: Connected to a pc and data transmission.

Test Mode 2: Charging

EUT has more than one typical operation, only the worst test mode will be recorded in this report.

The Radiated emission measurements were carried out in semi-anechoic chamber with 3-meter test range, and EUT is rotated on three test planes to find out the worst emission (X plane).

3.4 Support Equipment List

Table 2 Support Equipment List

Name	Model No.	S/N	Manufacturer
Adapter	VCB3HDUH	---	Huizhou Golden Lake Industrial Co., Ltd.
Rechargeable Li-ion Polymer Battery for EUT	PFI-3265-N	---	Dongguan Anyfine Electronic Technology Co., Ltd
Notebook	HP ProBook 440 G6	---	HP

3.5 Test Conditions

Date of test: May.10,2024 – May.13,2024

Temperature: 22°C-23°C

Relative Humidity: 48%-55%

3.6 Modifications

No modification was made.

4 CONDUCTED EMISSION TEST

4.1 Test Standard and Limit

4.1.1 Test Standard

FCC Part 15 Subpart B

4.1.2 Test Limit

Table 3 Conducted Emission Test Limit

Frequency range MHz	Class B		Class A	
	Quasi Peak dB(μ V)	Average dB(μ V)	Quasi Peak dB(μ V)	Average dB(μ V)
0.15 to 0.5	66 to 56	56 to 46	79	66
0.5 to 5	56	46	73	60
5 to 30	60	50	73	60

* Decreasing linearly with logarithm of the frequency

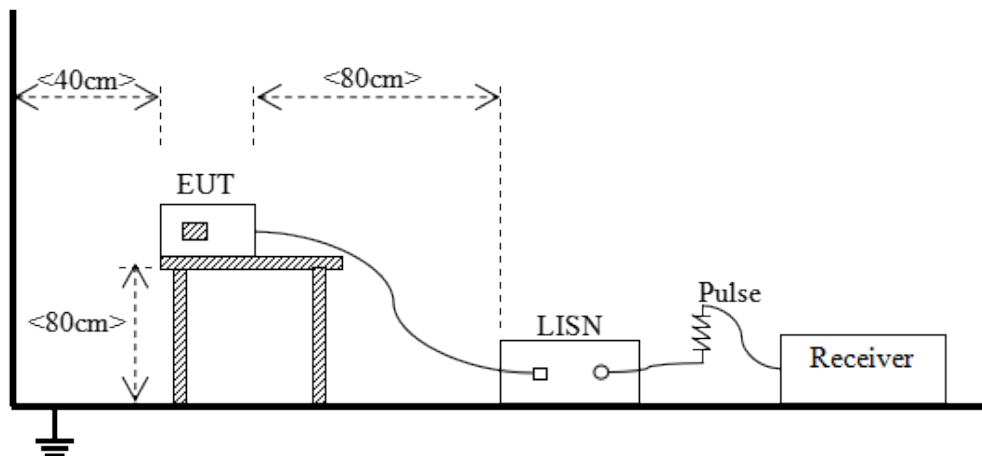
4.2 Test Procedure

The EUT is put on a table of non-conducting material that is 80 cm high. The vertical conducting wall of shielding is located 40 cm to the rear of the EUT. The power line of the EUT is connected to the AC mains through an Artificial Mains Network (A.M.N.). A EMI test receiver used to test the emissions from both sides of AC line. The bandwidth of EMI test receiver is set at 9 kHz.

4.3 Test Arrangement

The arrangement of the equipment is installed to meet the standards and operating in a manner, which tends to maximize its emission characteristics in a normal application. The detailed information refers to test picture.

4.4 Test Setup



4.5 Test Equipment

No.	Equipment	Manufacturer	Model No.	LAST CALIB	Period
SB8501/06	AMN	ROHDE&SCHWARZ	ESH2-Z5	2024-01-16	12Months
SB9054/05	EMI Test Receiver	ROHDE&SCHWARZ	R&S□ESCI	2023-06-30	12Months
SB9548	Shielded Room	Albatross	SR	2023-08-30	12Months

4.6 Test Condition

Date of test: May.10,2024

Temperature: 22°C

Relative Humidity: 55%RH

Atmospheric Pressure: 101.2kPa

4.7 Test Data

Note: Emissions not reported below are too low against the prescribed limits. “/” means the test data is too low against the limit.

Classification of Equipment: Class B

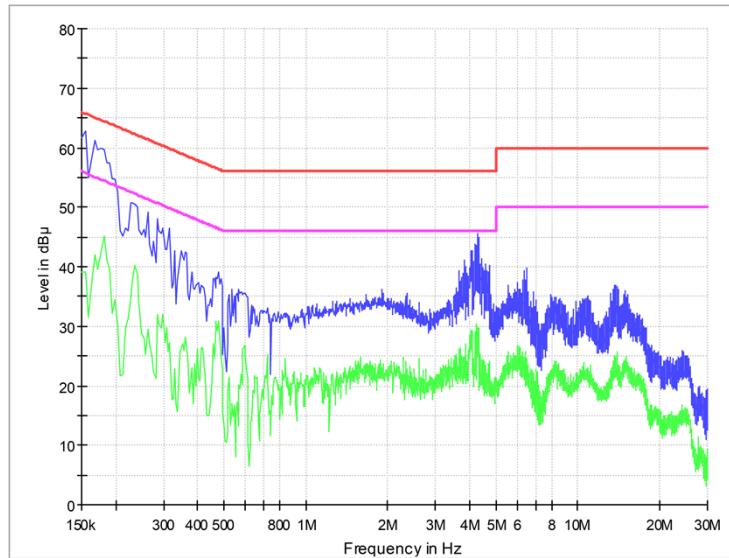
Table 4 Conducted Emission Test Data

Test mode: 1										
	Frequency (MHz)	Correction Factor (dB)	Quasi-Peak				Average			
			Reading (dBμV)	Emission Level (dBμV)	Limits (dBμV)	Margin (dB)	Reading (dBμV)	Emission Level (dBμV)	Limits (dBμV)	Margin (dB)
Line	0.154	10.1	43.3	53.4	65.8	12.4	23.7	33.8	55.8	22.0
Line	0.168	10.1	46.2	56.3	65.1	8.8	26.3	36.4	55.1	18.7
Line	0.235	10.1	37.7	47.8	62.3	14.5	25.3	35.4	52.3	16.9
Line	0.316	10.1	28.3	38.4	59.8	21.4	12.8	22.9	49.8	26.9
Line	0.469	10.1	25.7	35.8	56.5	20.7	17.1	27.2	46.5	19.3
Line	4.290	10.0	27.9	37.9	56.0	18.1	16.3	26.3	46.0	19.7
Neutral	0.150	10.1	34.0	44.1	66.0	21.9	18.9	29.0	56.0	27.0
Neutral	0.177	10.1	46.3	56.4	64.6	8.2	33.0	43.1	54.6	11.5
Neutral	0.231	10.1	35.0	45.1	62.4	17.3	21.6	31.7	52.4	20.7
Neutral	0.294	10.1	31.7	41.8	60.4	18.6	16.2	26.3	50.4	24.1
Neutral	0.357	10.1	26.8	36.9	58.8	21.9	13.4	23.5	48.8	25.3
Neutral	4.173	10.0	24.5	34.5	56.0	21.5	13.6	23.6	46.0	22.4

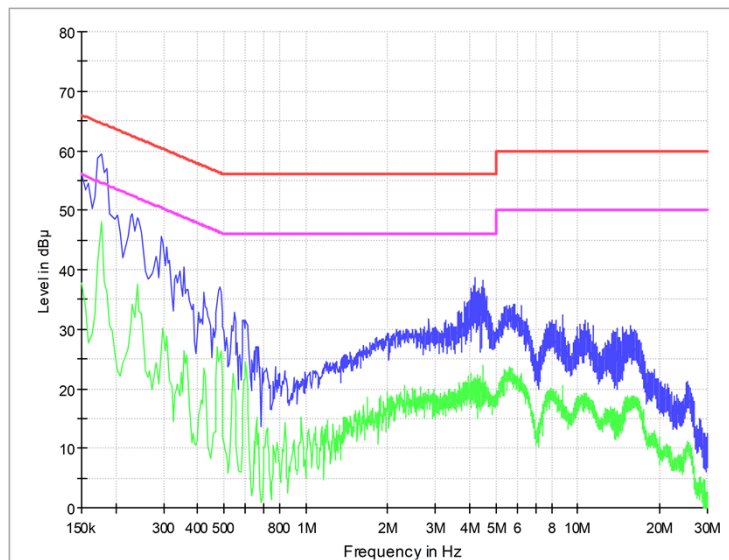
REMARKS: 1. Emission level (dBuV) =Read Value (dBuV) + Correction Factor (dB)

2. Correction Factor (dB) =LISN Factor (dB) + Cable Factor (dB) +Limiter Factor (dB)

Test Mode 1
Line



Neutral



5 RADIATED EMISSION TEST

5.1 Test Standard and Limit

5.1.1 Test Standard

FCC Part 15 Subpart B

5.1.2 Test Limit

Table 5 Radiated Emission Test Limit for FCC (Class A)

Frequency MHz	Test distance m	Limit dB(μ V/m)				
		Quasi-peak	Average	Peak		
30~88	10	39.1	/	/		
88~216		43.5				
216~960		46.4				
960~1000		49.5				
30~88	3	49.1			/	/
88~216		53.5				
216~960		56.4				
960~1000		59.5				
>1000	3		59.5	79.5		
Conditional testing procedure for above 1 GHz :						
Highest frequency generated or used in the device or on which the device operates or tunes (MHz)		Upper frequency of measurement range (MHz)				
Below 1.705		30				
1.705~108		1000				
108~500		2000				
500~1000		5000				
Above 1000		5th harmonic of the highest frequency or 40 GHz, whichever is lower.				
* The lower limit shall apply at the transition frequency.						

Table 6 Radiated Emission Test Limit for FCC (Class B)

Frequency MHz	Test distance m	Limit dB(μ V/m)				
		Quasi-peak	Average	Peak		
30~88	10	30	/	/		
88~216		33.5				
216~960		36				
960~1000		44				
30~88	3	40			/	/
88~216		43.5				
216~960		46				
960~1000		54				
>1000	3		54	74		
Conditional testing procedure for above 1 GHz :						
Highest frequency generated or used in the device or on which the device operates or tunes (MHz)		Upper frequency of measurement range (MHz)				
Below 1.705		30				

1.705~108	1000
108~500	2000
500~1000	5000
Above 1000	5th harmonic of the highest frequency or 40 GHz, whichever is lower.
* The lower limit shall apply at the transition frequency.	

5.2 Test Procedure

The EUT is placed on a turntable, which is 0.8 meter above ground. The turntable can rotate 360 degrees to determine the position of the maximum emission level. EUT is set 3 meters or 10 meters away from the receiving antenna, which is mounted on an antenna tower. The antenna can move up and down between 1 to 4 meters to find out the maximum emission level. Broadband antenna is used as a receiving antenna. Both horizontal and vertical polarization of the antenna is set on test.

RBW = 100 kHz (less than or equal to 1 GHz); 1 MHz (above 1 GHz)

VBW $\geq 3 \times$ RBW

Detector = Peak & Quasi-Peak (frequency range 30 MHz to 1 GHz);

Peak & Average (frequency range above 1 GHz);

Changing VBW to 10 Hz for average measurement

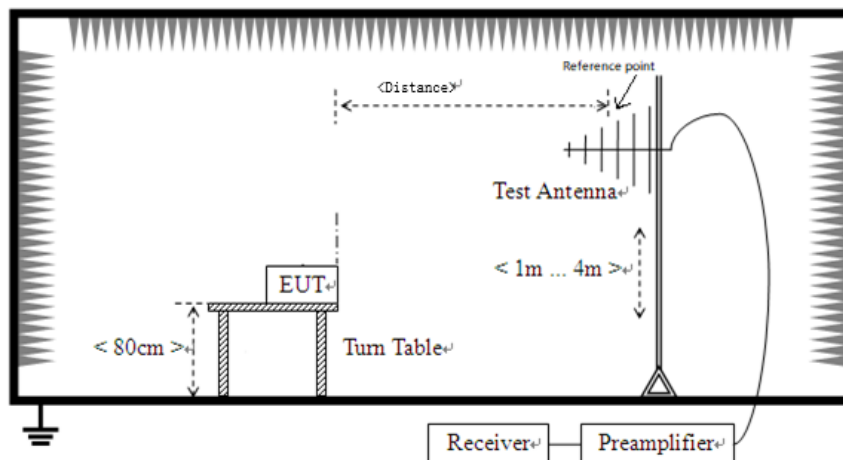
The use of a higher-than-specified video bandwidth produces a conservative measurement result.

5.3 Test Arrangement

The arrangement of the equipment is installed to meet the standards and operating in a manner, which tends to maximize its emission characteristics in a normal application. The detailed information refers to test picture.

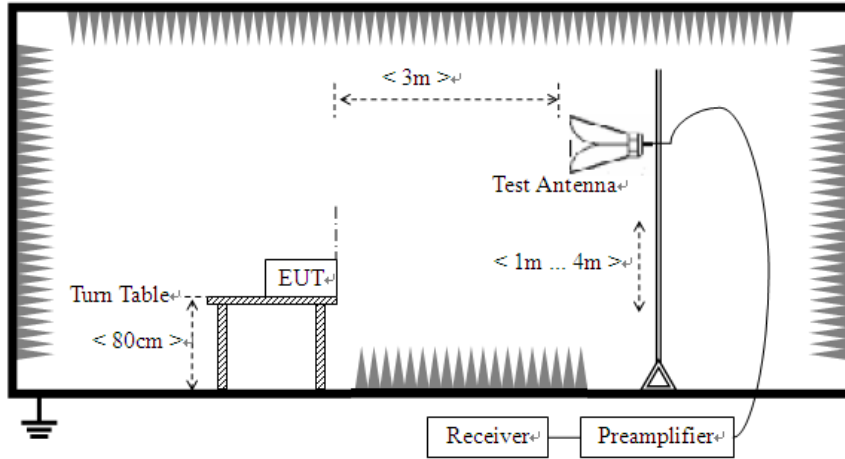
5.4 Test Setup

Below 1 GHz



Distance = 3 meters or 10 meters

Above 1 GHz



5.5 Test Equipment

No.	Equipment	Manufacturer	Model No.	LAST CALIB	Period
SB13958	Horn Antenna	ROHDE&SCHWARZ	HF907	2024-04-30	12 Months
SB17366	Test Receiver	ROHDE&SCHWARZ	ESR26	2024-04-30	12 Months
SB20321/02	Spectrum Analyzer	Rohde & Schwarz	FSW43	2024-04-22	12 Months
SB3955	Broadband Antenna	SCHWARZBECK	VULB9163	2024-04-30	12 Months
SB9555/01	Anechoic chamber	Albatross	/	2023-08-15	12 Months

5.6 Test Condition

Date of test: May.13,2024

Temperature: 23 °C

Relative Humidity: 48 %RH

Atmospheric Pressure: 100.9 kPa

5.7 Test Data

Note: Emissions not reported below are too low against the prescribed limits. “/” means the test data is too low against the limit.

Classification of Equipment: Class B

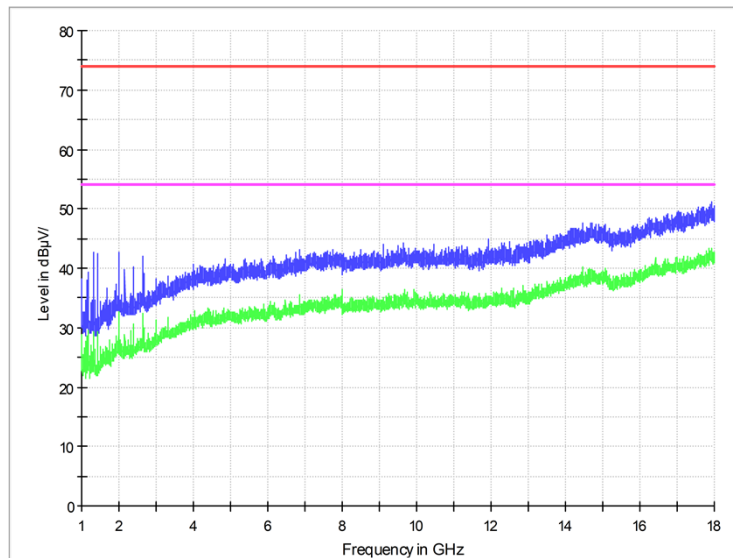
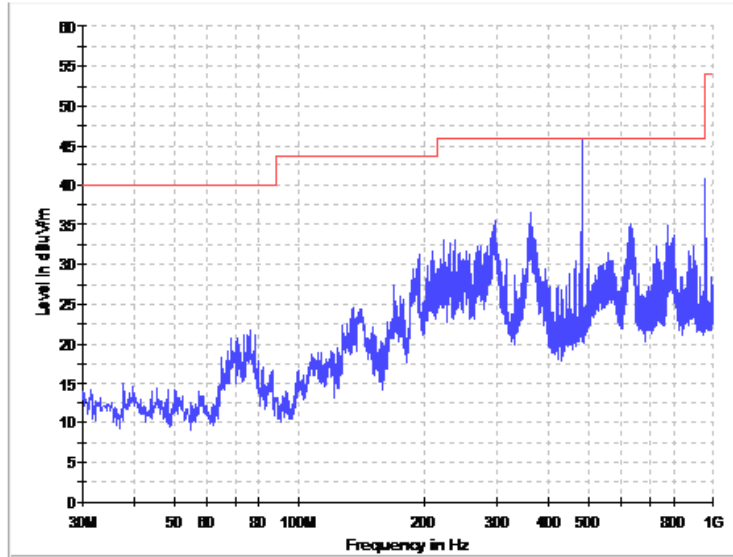
Below 1 GHz Test Distance: 3 m

Table 7 Radiated Emission Test Data

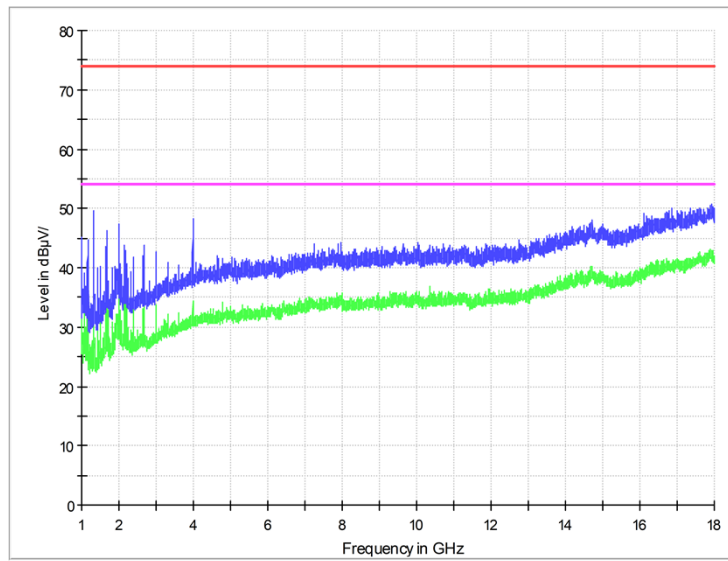
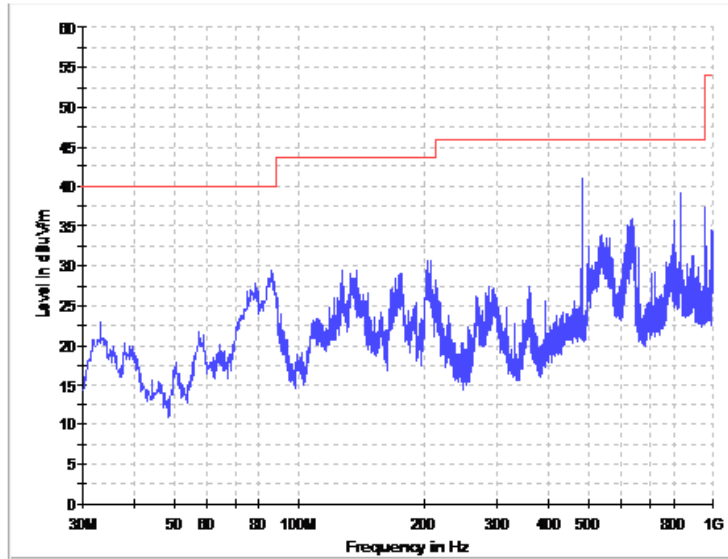
Test mode: 1								
Frequency (MHz)	Cable Loss +preamp (dB)	Antenna Factor (dB)	Reading Value (dB μ V/m)	Emission Level (dB μ V/m)	Polarity (Horizontal/ Vertical)	Limits (dB μ V/m)	Margin (dB)	Note
360.015	1.6	14.3	18.2	34.1	H	46.0	11.9	QP
479.972	1.9	16.1	25.9	43.9	H	46.0	2.1	QP
960.014	3.0	21.7	12.6	37.3	H	54.0	16.7	QP
207.186	1.2	10.6	13.0	24.8	V	43.5	18.7	QP
479.972	1.9	16.1	21.6	39.6	V	46.0	6.4	QP
830.034	2.7	20.1	8.4	31.2	V	46.0	14.8	QP
1994.500	-38.8	28.6	58.7	48.5	H	74.0	25.5	PK
14455.000	-32.7	40.2	41.3	48.8	H	74.0	25.2	PK
16235.000	-32.1	41.4	40.1	49.4	H	74.0	24.6	PK
1333.200	-39.5	25.1	71.6	57.2	V	74.0	16.8	PK
1996.200	-38.8	28.6	64.3	54.1	V	74.0	19.9	PK
3986.900	-36.9	32.9	57.4	53.4	V	74.0	20.6	PK
1994.500	-38.8	28.6	35.8	25.6	H	54.0	28.4	AV
14455.000	-32.7	40.2	27.5	35.0	H	54.0	19.0	AV
16235.000	-32.1	41.4	26.5	35.8	H	54.0	18.2	AV
1333.200	-39.5	25.1	41.6	27.2	V	54.0	26.8	AV
1996.200	-38.8	28.6	36.5	26.3	V	54.0	27.7	AV
3986.900	-36.9	32.9	32.9	28.9	V	54.0	25.1	AV

REMARKS: Emission level (dBuV)=Read Value(dBuV/m) + Antenna Factor(dB)+ Cable Loss +preamp(dB)

Test Mode 1
Horizontal



Vertical



-----End of Report-----