

Appendix Test Data for BLE (Conducted Measurement)

Product Name: Wireless Mechanical Keyboard

Trade Mark: Keychron

Test Model: B2 Pro

FCC ID: 2BGKB-B2PRO

Environmental Conditions

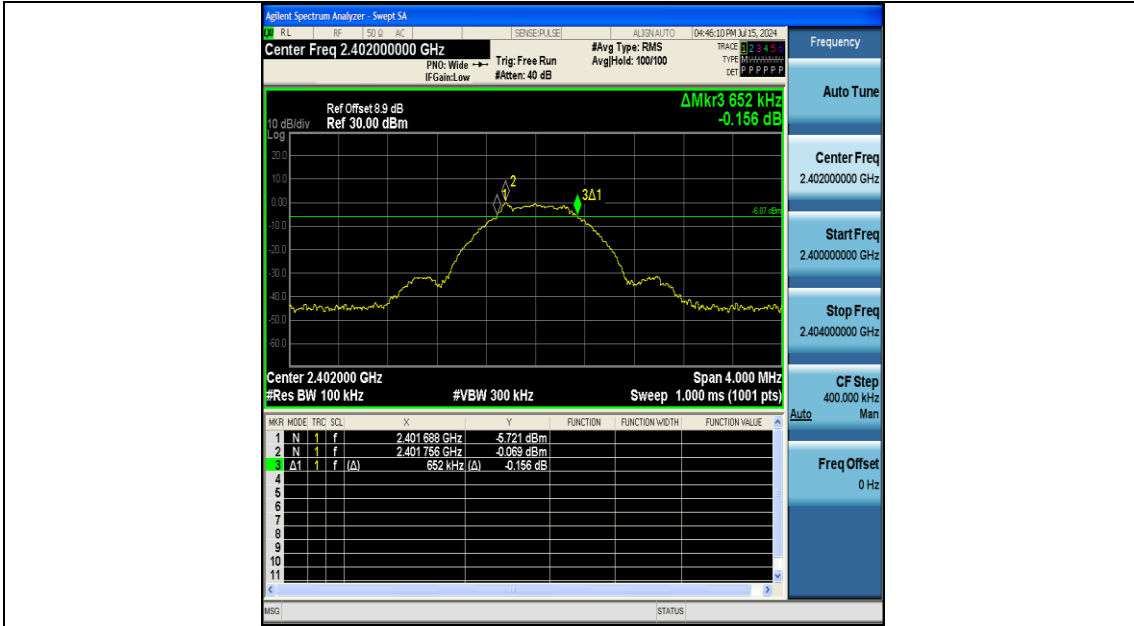
Temperature:	23.8℃
Relative Humidity:	58%
ATM Pressure:	100.0 kPa
Test Engineer:	Allen Lai
Supervised by:	Hugo Chen
NOTE	N/A

Appendix A: DTS Bandwidth

Test Result

TestMode	Antenna	Frequency[MHz]	DTS BW [MHz]	FL[MHz]	FH[MHz]	Limit[MHz]	Verdict
BLE_1M	Ant1	2402	0.652	2401.688	2402.340	0.5	PASS
BLE_1M	Ant1	2440	0.700	2439.668	2440.368	0.5	PASS
BLE_1M	Ant1	2480	0.660	2479.680	2480.340	0.5	PASS

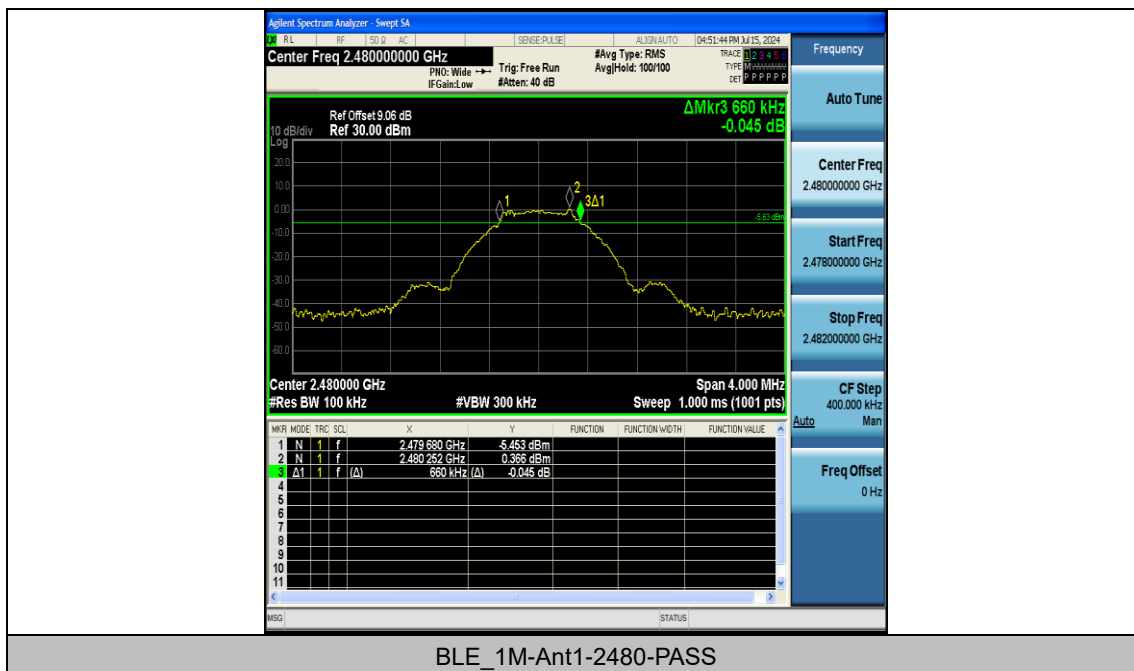
Test Graphs



BLE_1M-Ant1-2402-PASS



BLE_1M-Ant1-2440-PASS



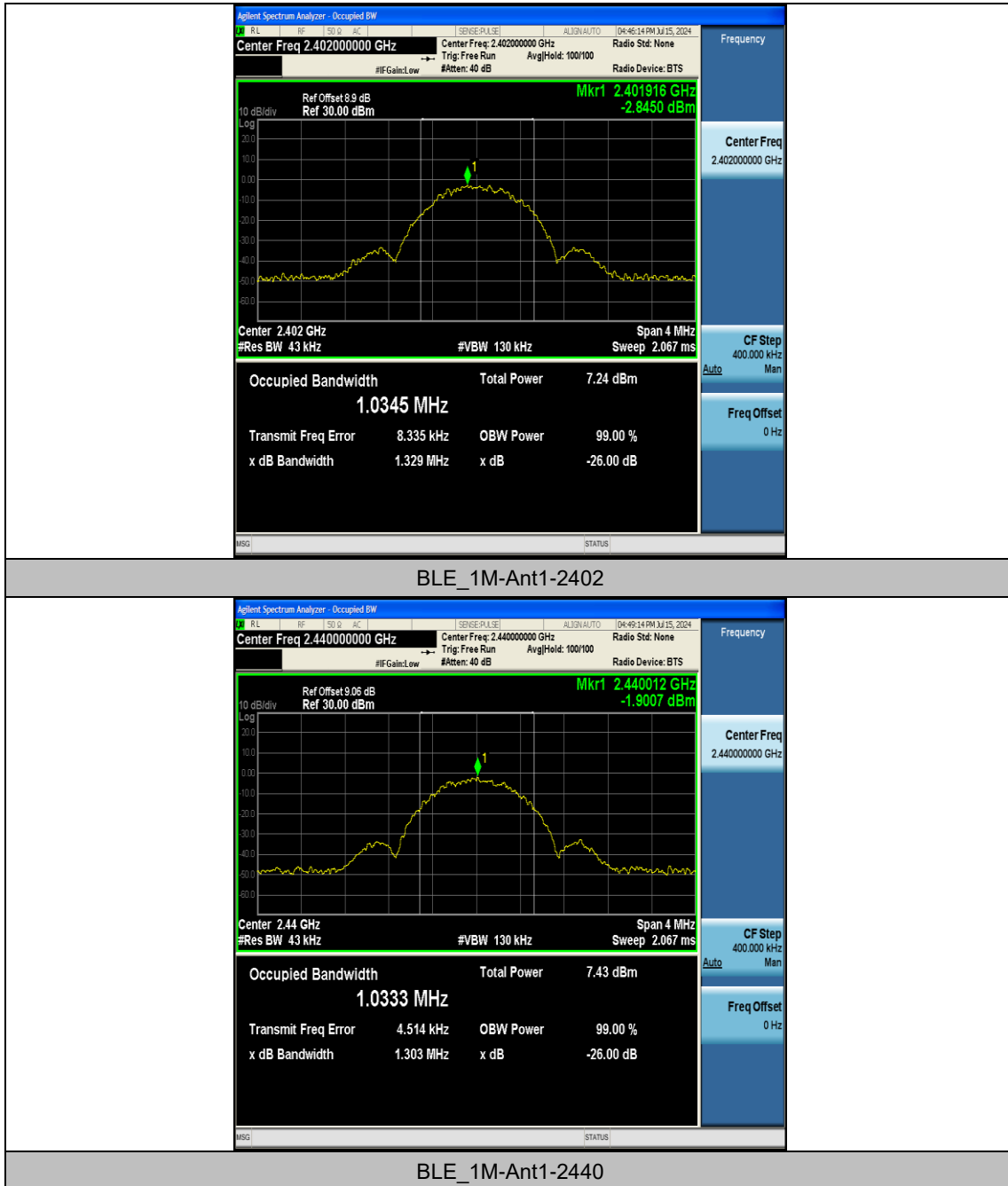
BLE_1M-Ant1-2480-PASS

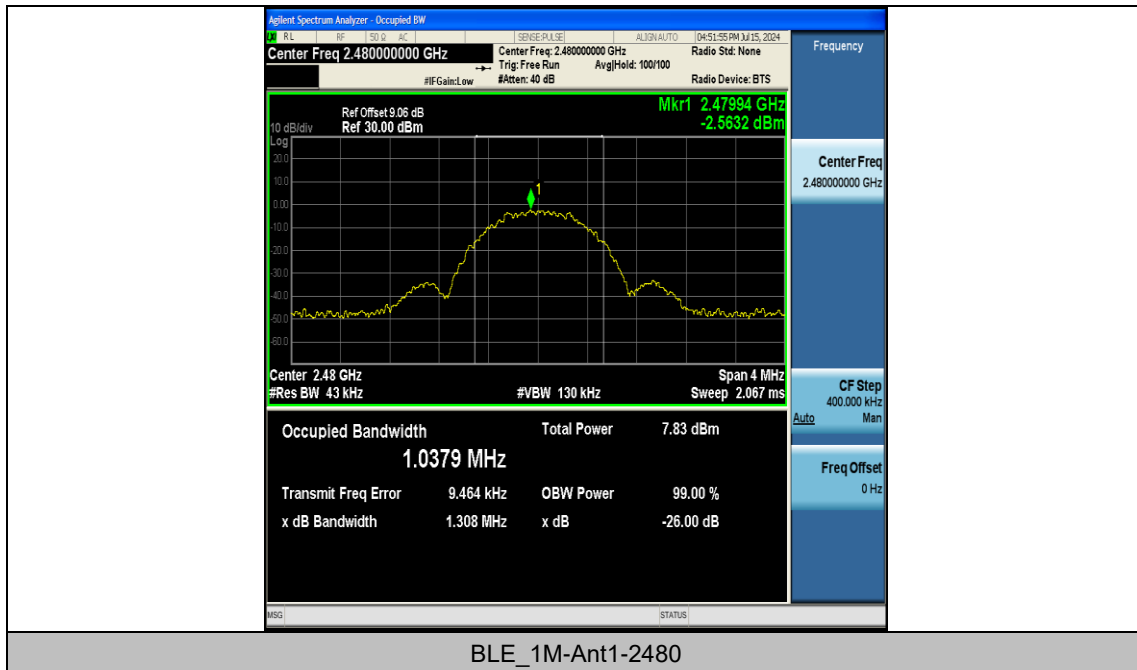
Appendix B: Occupied Channel Bandwidth

Test Result

TestMode	Antenna	Frequency[MHz]	OCB [MHz]	FL[MHz]	FH[MHz]	Limit[MHz]	Verdict
BLE_1M	Ant1	2402	1.0345	2401.4911	2402.5256	---	---
BLE_1M	Ant1	2440	1.0333	2439.4879	2440.5212	---	---
BLE_1M	Ant1	2480	1.0379	2479.4905	2480.5284	---	---

Test Graphs





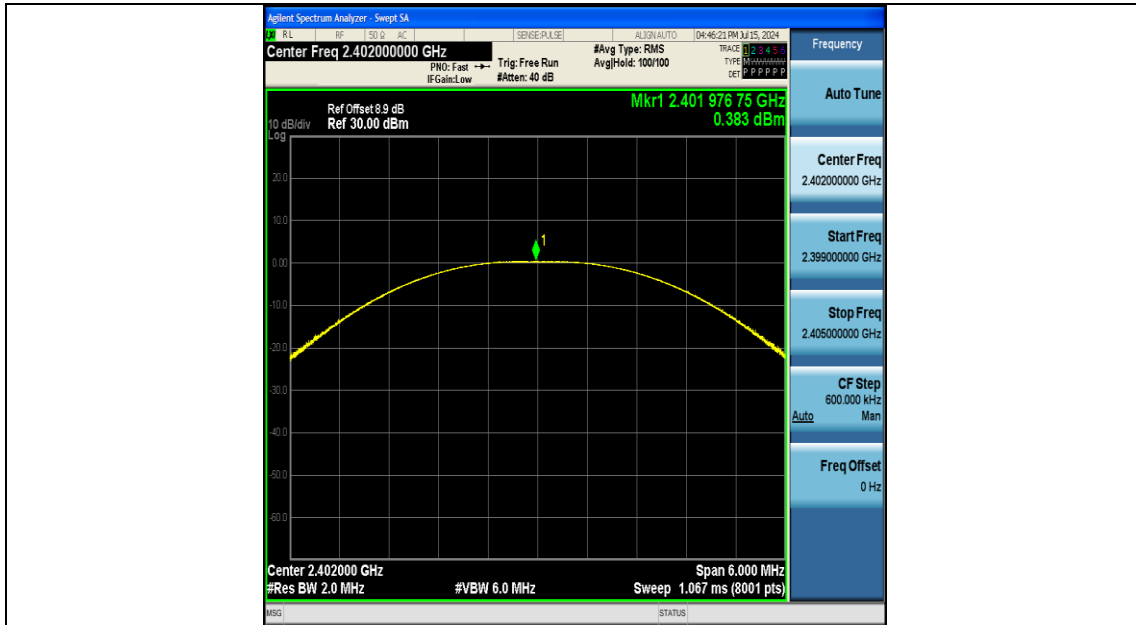
BLE_1M-Ant1-2480

Appendix C: Maximum peak conducted output power

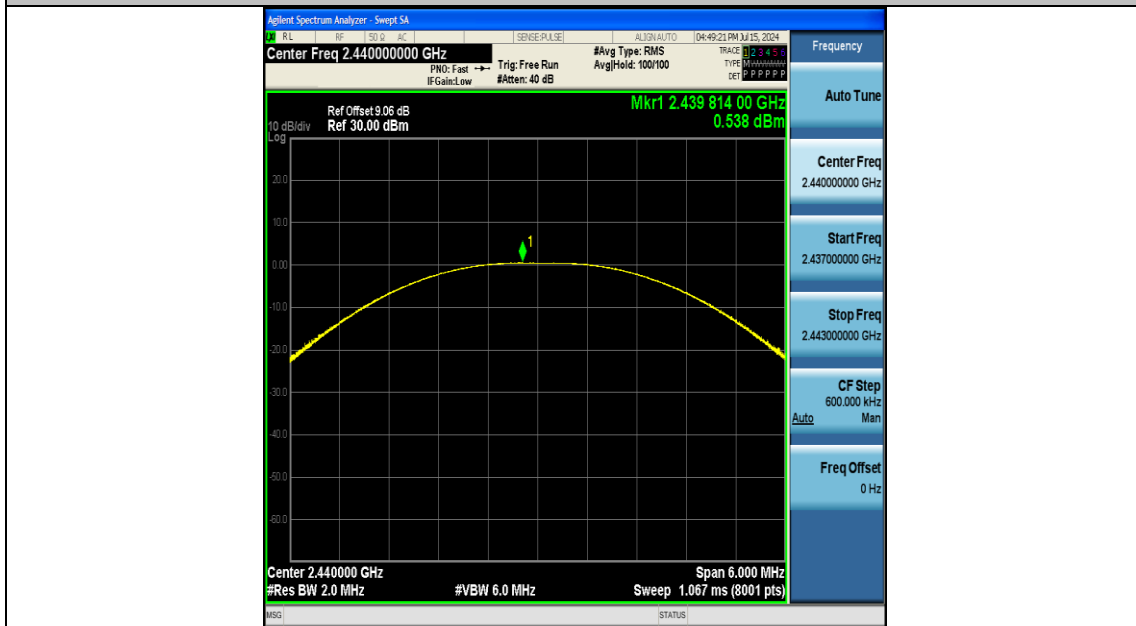
Test Result Peak

TestMode	Antenna	Frequency[MHz]	Conducted Peak Power[dBm]	Conducted Limit[dBm]	Verdict
BLE_1M	Ant1	2402	0.38	≤30	PASS
BLE_1M	Ant1	2440	0.54	≤30	PASS
BLE_1M	Ant1	2480	0.90	≤30	PASS

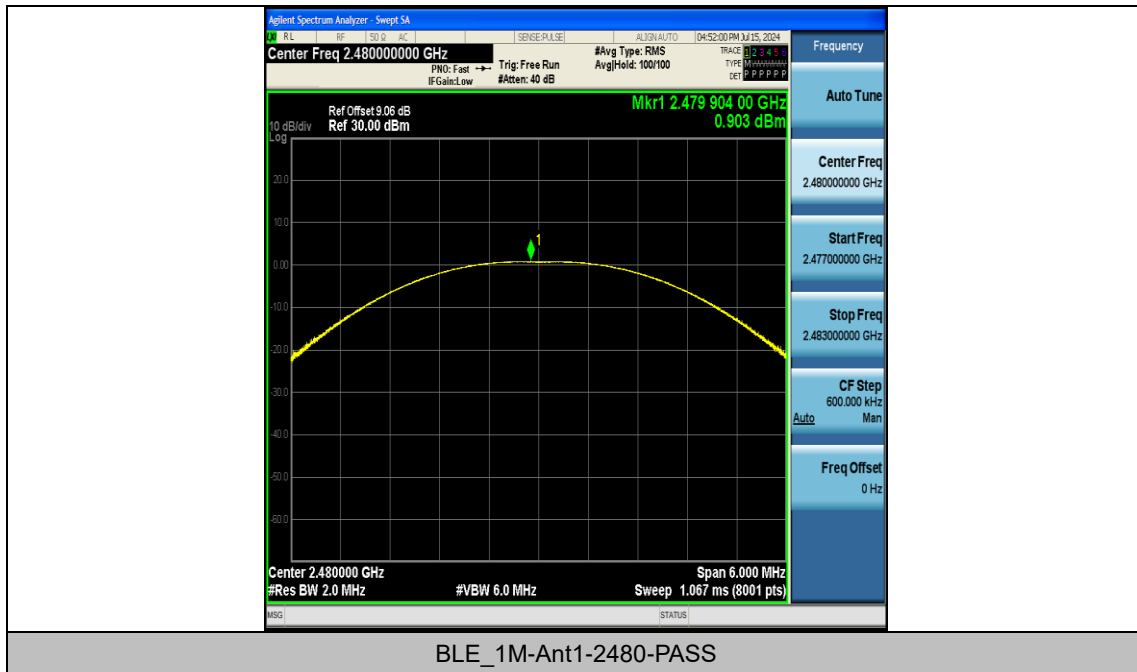
Test Graphs Peak



BLE_1M-Ant1-2402-PASS



BLE_1M-Ant1-2440-PASS

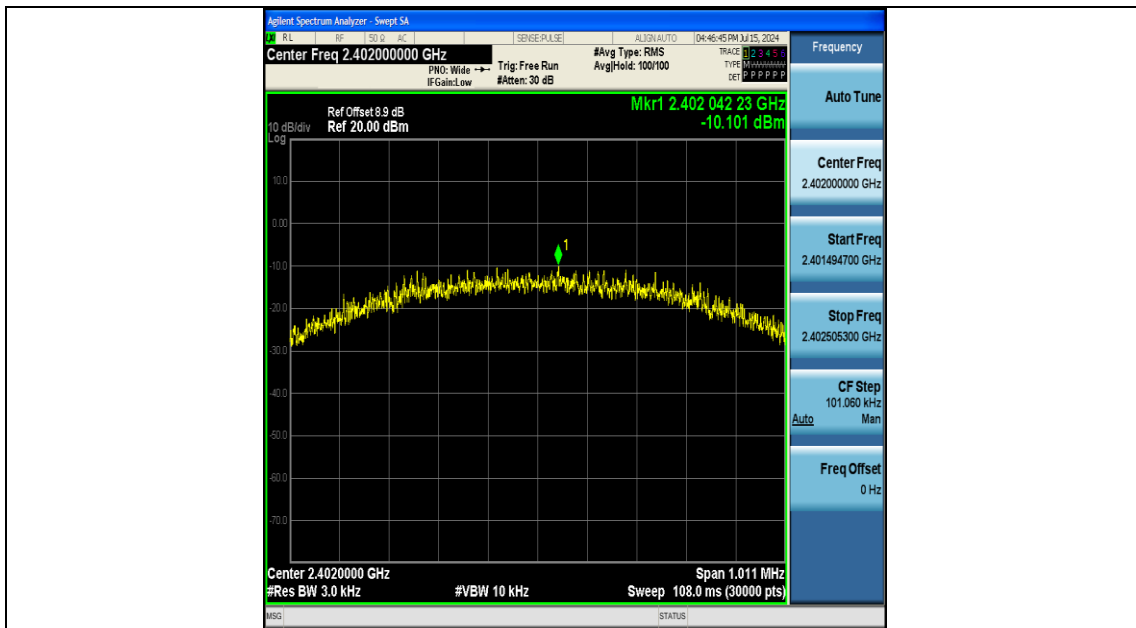


Appendix D: Maximum peak power spectral density

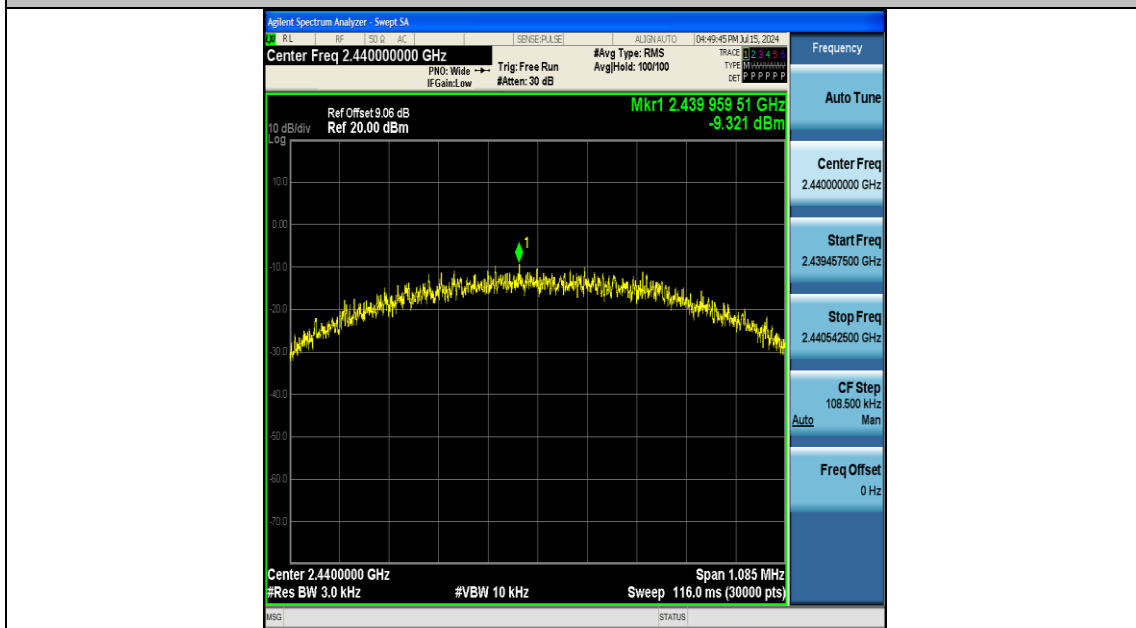
Test Result

TestMode	Antenna	Frequency[MHz]	Result[dBm/3kHz]	Limit[dBm/3kHz]	Verdict
BLE_1M	Ant1	2402	-10.10	≤8.00	PASS
BLE_1M	Ant1	2440	-9.32	≤8.00	PASS
BLE_1M	Ant1	2480	-8.20	≤8.00	PASS

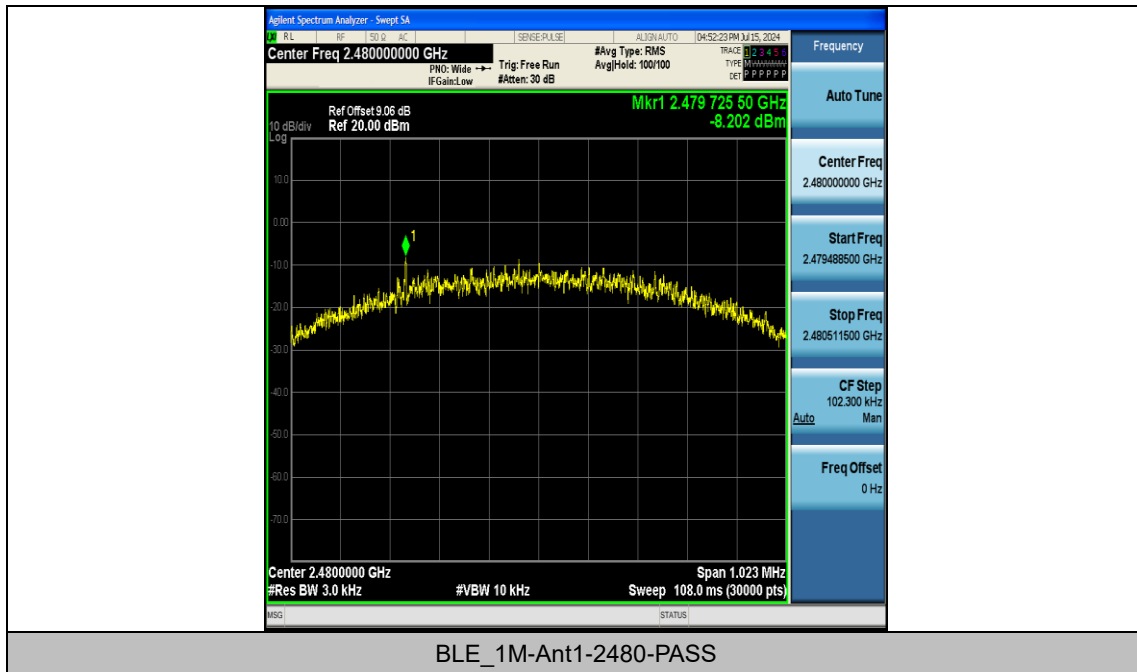
Test Graphs



BLE_1M-Ant1-2402-PASS



BLE_1M-Ant1-2440-PASS

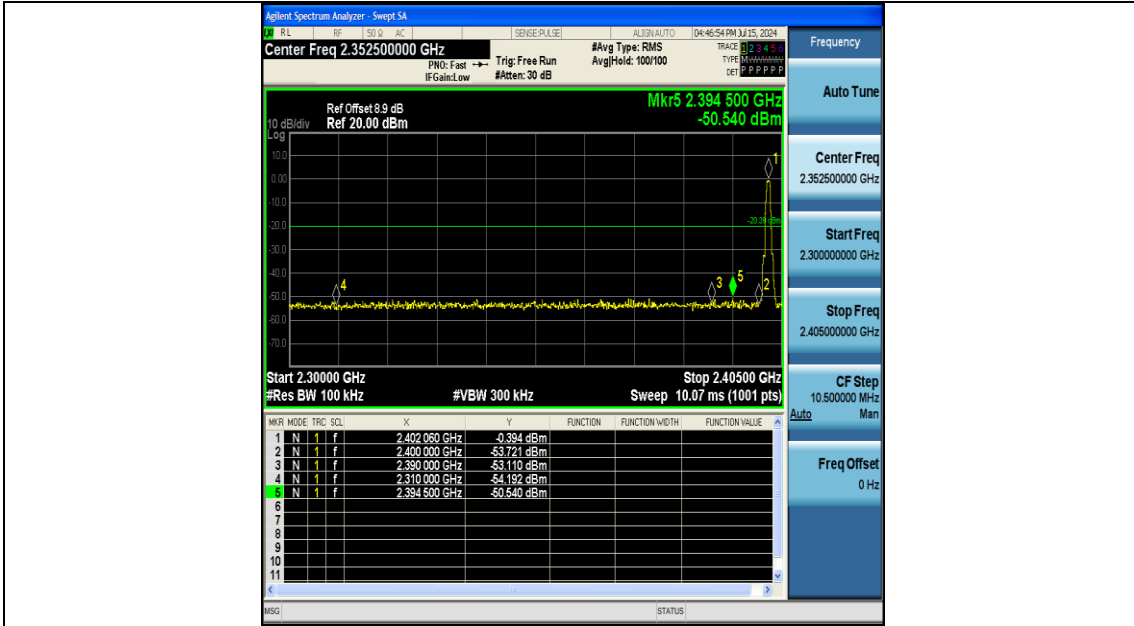


Appendix E: Band edge measurements

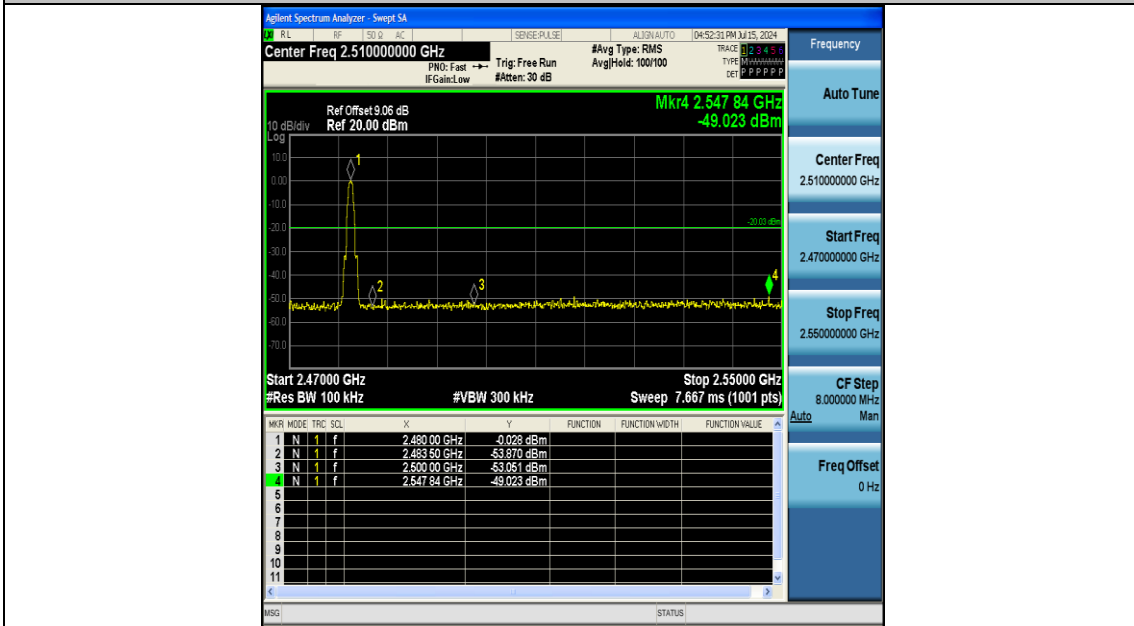
Test Result

TestMode	Antenna	Channel	Frequency[MHz]	RefLevel[dBm]	Result[dBm]	Limit[dBm]	Verdict
BLE_1M	Ant1	Low	2402	-0.39	-50.54	≤-20.39	PASS
BLE_1M	Ant1	High	2480	-0.03	-49.02	≤-20.03	PASS

Test Graphs



BLE_1M-Ant1-240-PASS



BLE_1M-Ant1-2480-PASS

Appendix F: Conducted Spurious Emission

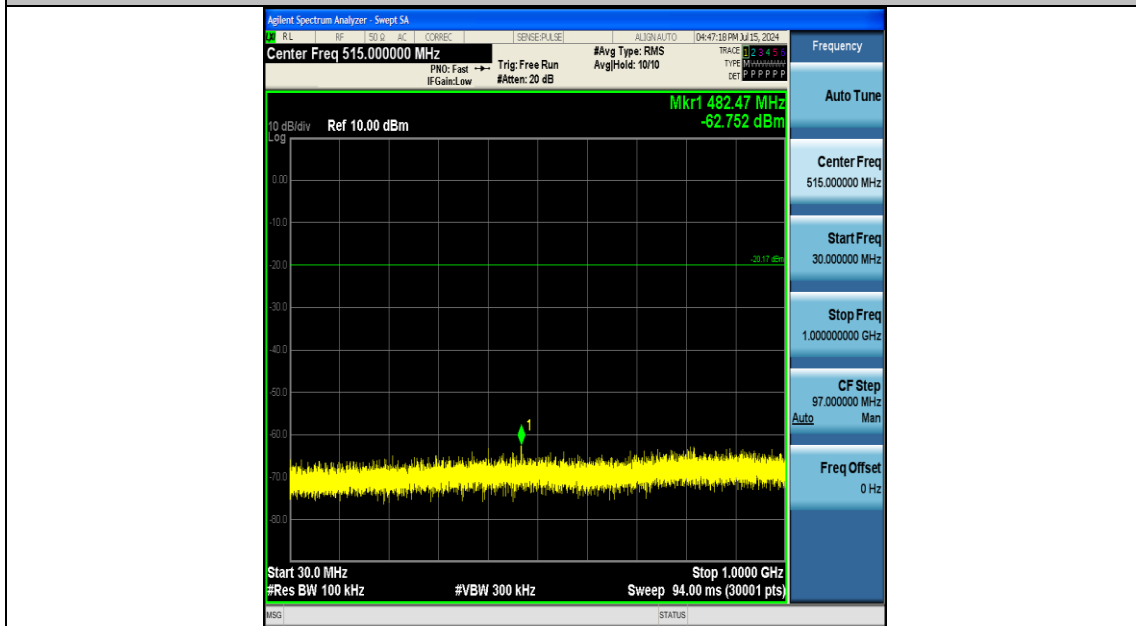
Test Result

TestMode	Antenna	Frequency[MHz]	FreqRange [MHz]	RefLevel [dBm]	Result[dBm]	Limit[dBm]	Verdict
BLE_1M	Ant1	2402	0~Reference	-0.17	-0.17	---	PASS
BLE_1M	Ant1	2402	30~1000	-0.17	-62.75	≤-20.17	PASS
BLE_1M	Ant1	2402	1000~26500	-0.17	-48.26	≤-20.17	PASS
BLE_1M	Ant1	2440	0~Reference	-0.23	-0.23	---	PASS
BLE_1M	Ant1	2440	30~1000	-0.23	-62.86	≤-20.23	PASS
BLE_1M	Ant1	2440	1000~26500	-0.23	-47.25	≤-20.23	PASS
BLE_1M	Ant1	2480	0~Reference	-0.04	-0.04	---	PASS
BLE_1M	Ant1	2480	30~1000	-0.04	-61.9	≤-20.04	PASS
BLE_1M	Ant1	2480	1000~26500	-0.04	-48.4	≤-20.04	PASS

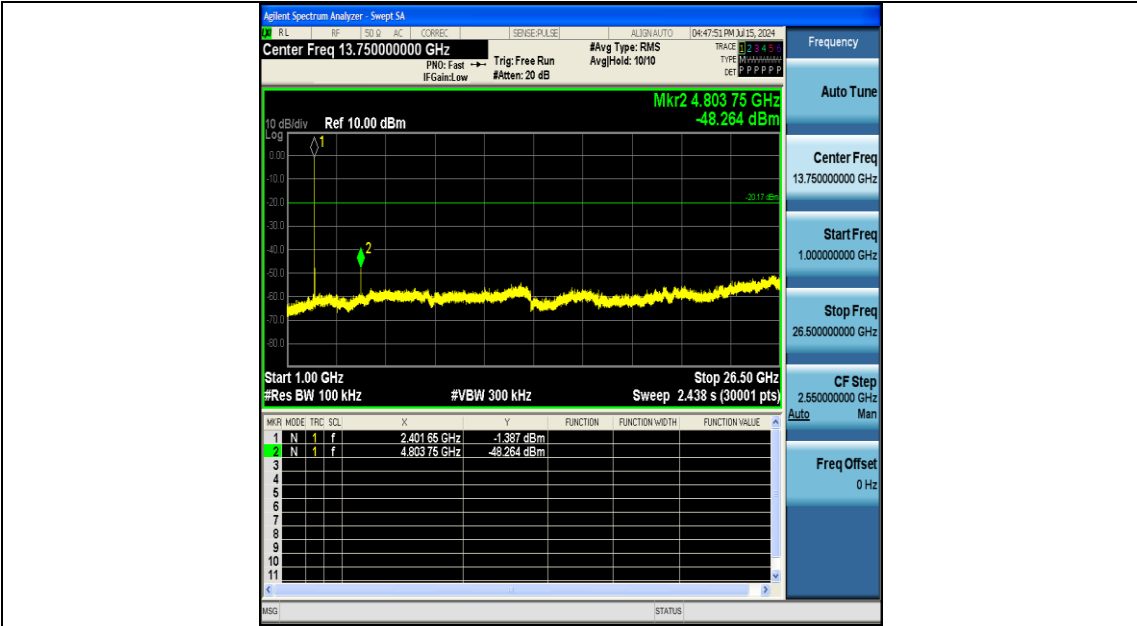
Test Graphs



BLE_1M-Ant1-2402-0~Reference-PASS



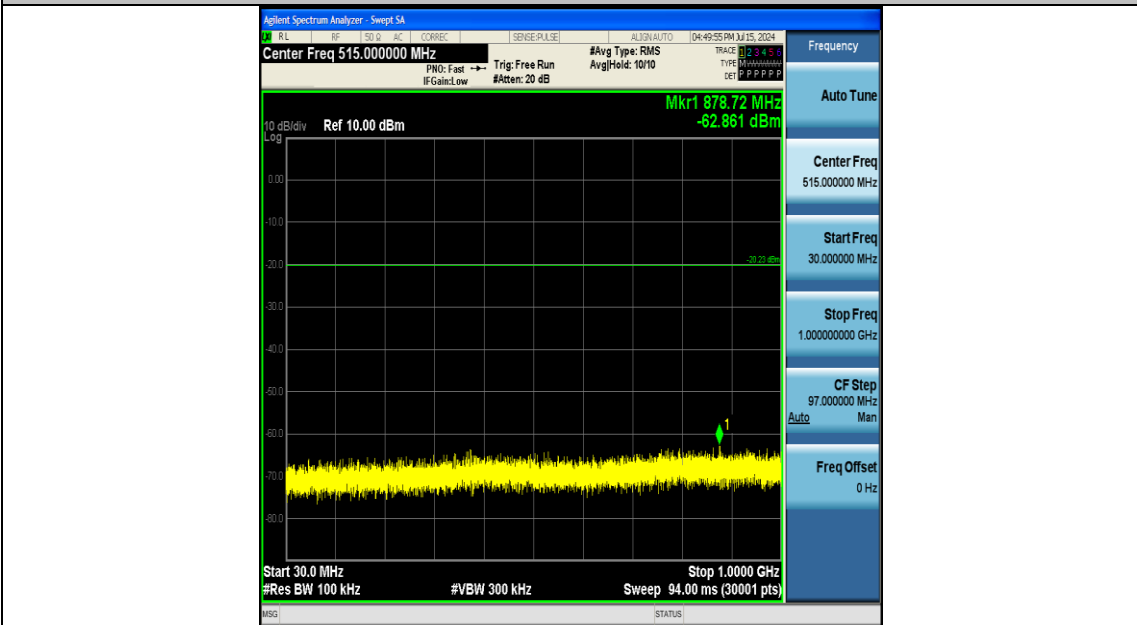
BLE_1M-Ant1-2402-30~1000-PASS



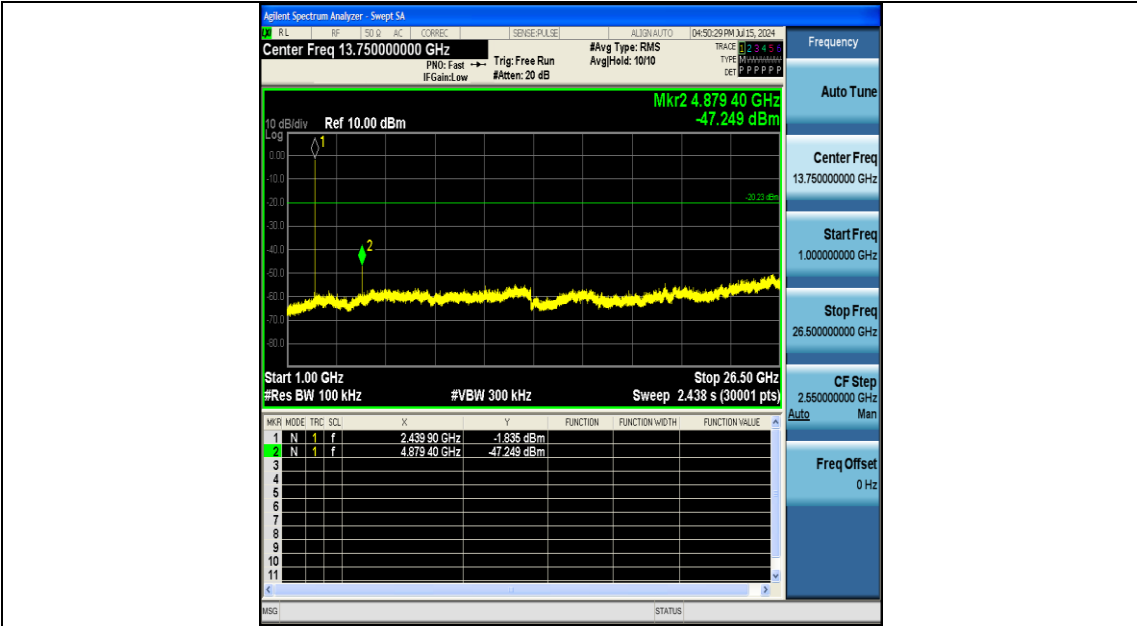
BLE_1M-Ant1-2402-1000~26500-PASS



BLE_1M-Ant1-2440-0~Reference-PASS



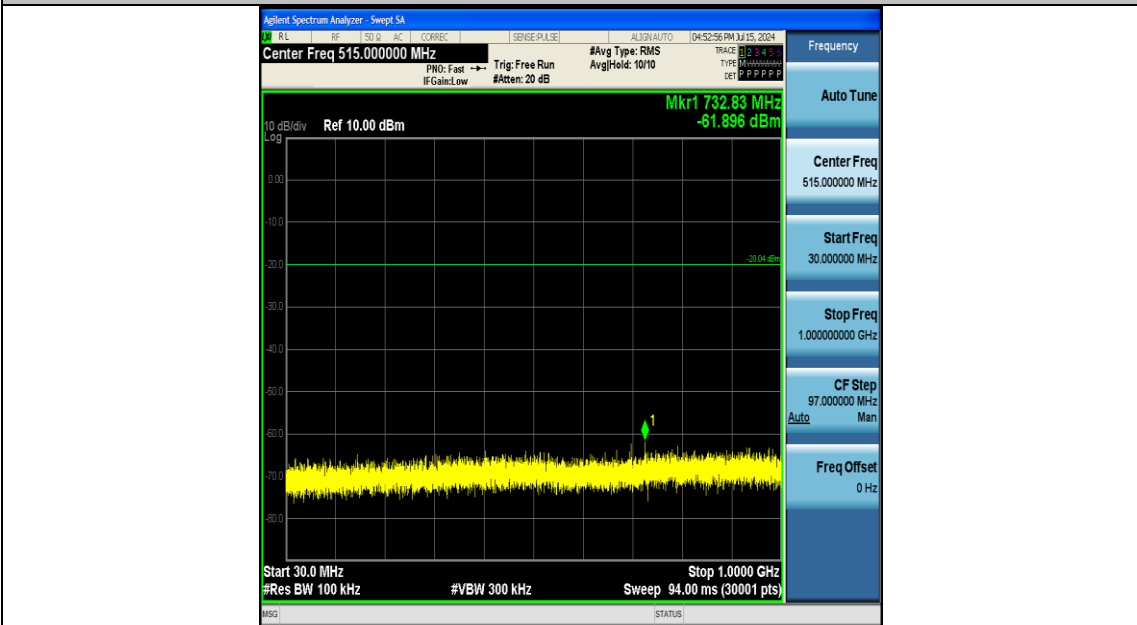
BLE_1M-Ant1-2440-30~1000-PASS



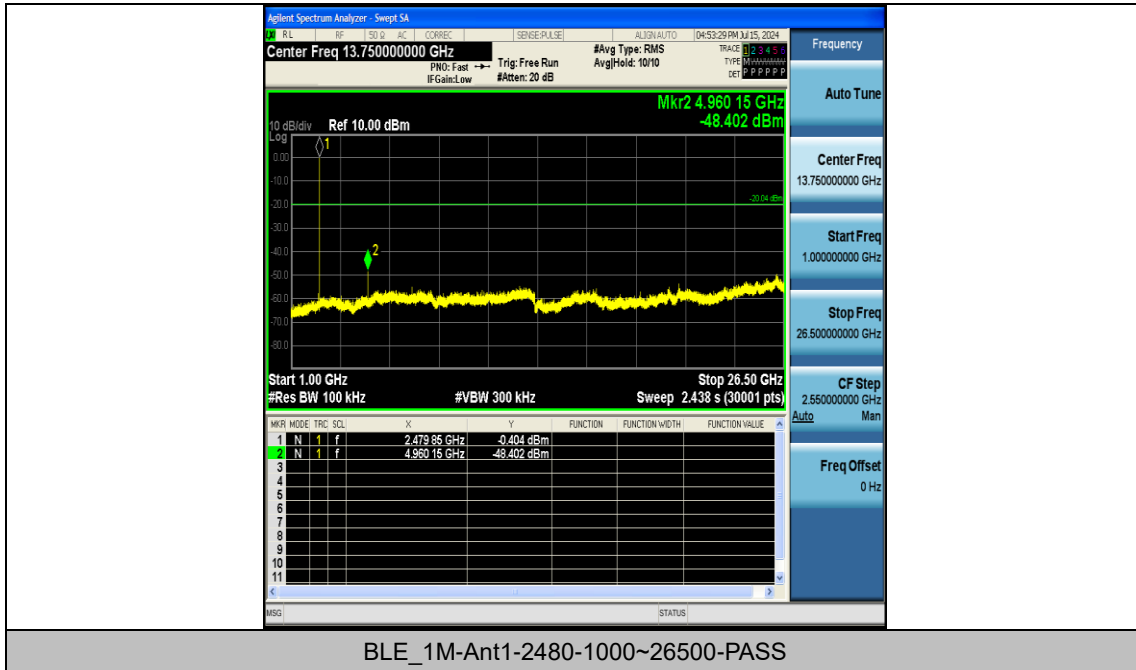
BLE_1M-Ant1-2440-1000~26500-PASS



BLE_1M-Ant1-2480-0~Reference-PASS



BLE_1M-Ant1-2480-30~1000-PASS

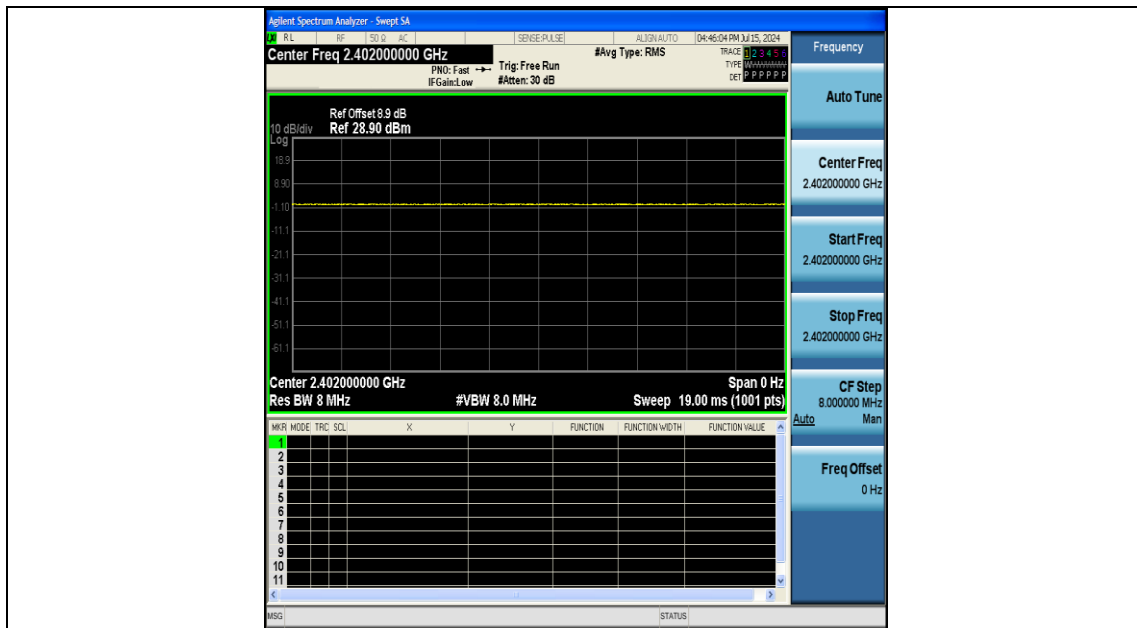


Appendix G: Duty Cycle

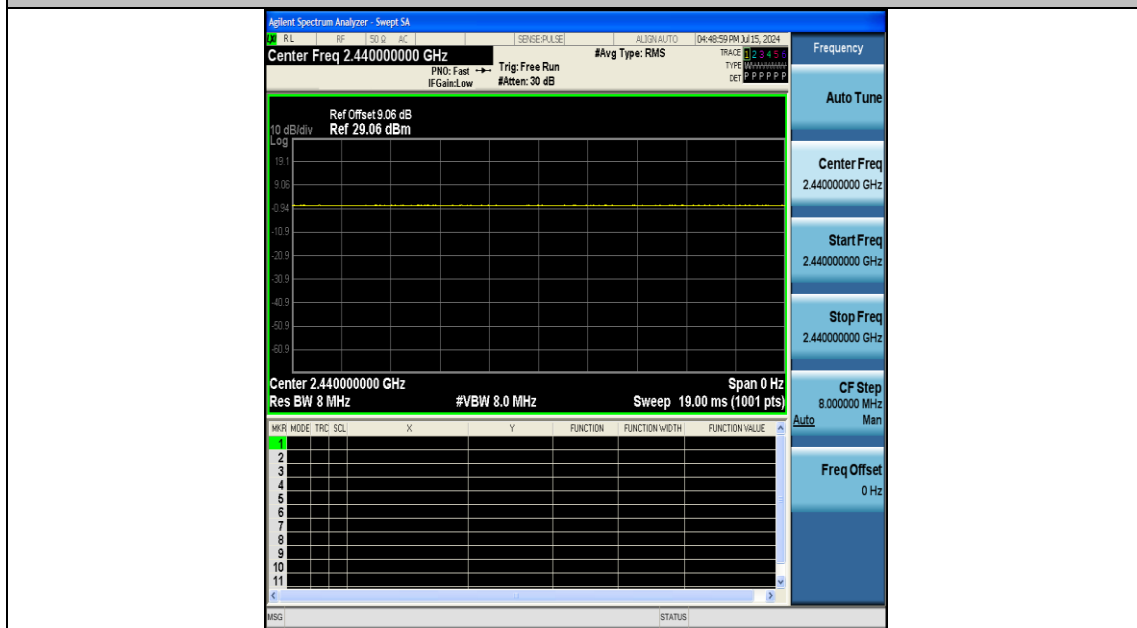
Test Result

TestMode	Antenna	Frequency[MHz]	ON Time [ms]	Period [ms]	Duty Cycle [%]	Duty Cycle Factor[dB]
BLE_1M	Ant1	2402	19.00	19.00	100.00	0.00
BLE_1M	Ant1	2440	19.00	19.00	100.00	0.00
BLE_1M	Ant1	2480	19.00	19.00	100.00	0.00

Test Graphs



NTNV-BLE_1M-Ant1-2402



NTNV-BLE_1M-Ant1-2440

