

## 1. Antenna Description:

|                 |   |
|-----------------|---|
| Antenna type    | PIFA antenna                                      |
| Model           | S1  |
| Frequency range | 2402MHz to 2480MHz                                |
| Manufacturer    | Yingda Intelligent Technology (Shenzhen) Co., Ltd |
| ANT Peak Gain   | 0.85 dBi  |

## 2. Antenna Photo:

Length: 45.14mm  
Width: 6.96mm



### 3. Test Equipment & Conditions

#### 3.1 Test instrument

VSWR is tested using Agilent E5071B connected to a hand mechanism, and the status is free space.

#### 3.2 Test environment and methods

Dark room specifications: ETS-743

TD-SCDMA test equipment: StarPoint SP6010/Agilent 8960

LTE-TDD/FDD-SCDMA test equipment: StarPoint SP8011/CMW500

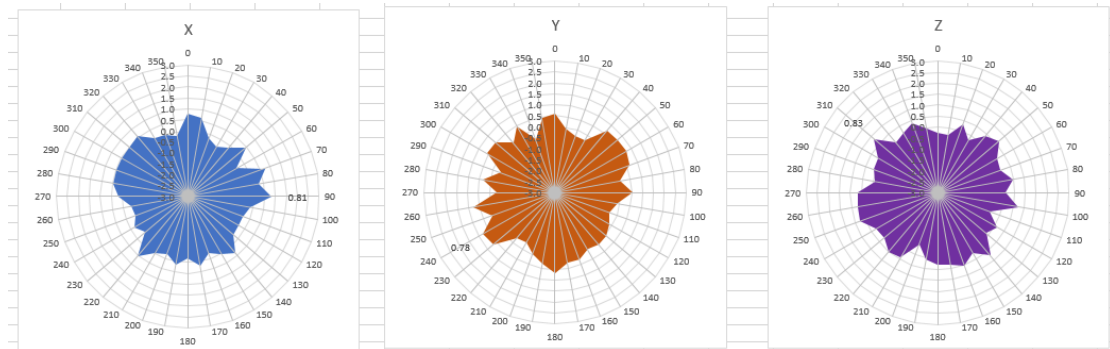
WCDMA/GSM/CDMA test equipment: Agilent 8960

Passive efficiency testing equipment: Agilent Technologies E5071B

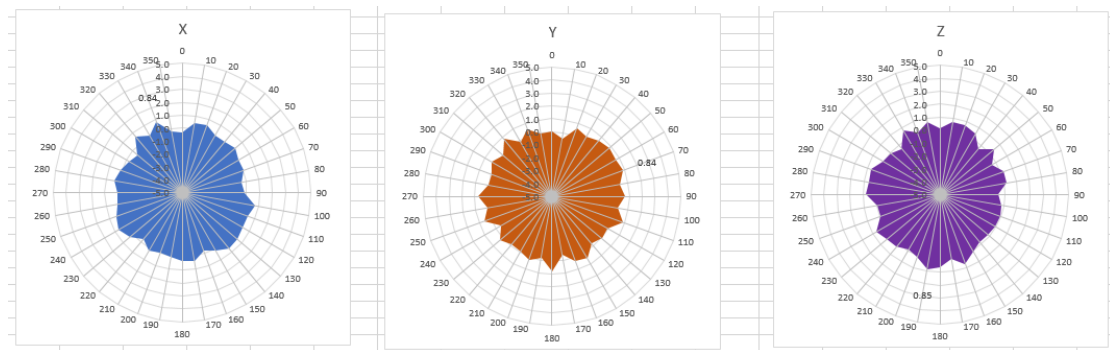


## 4 . Antenna Radiation Pattern

2400MHz



2450MHz



2500MHz

